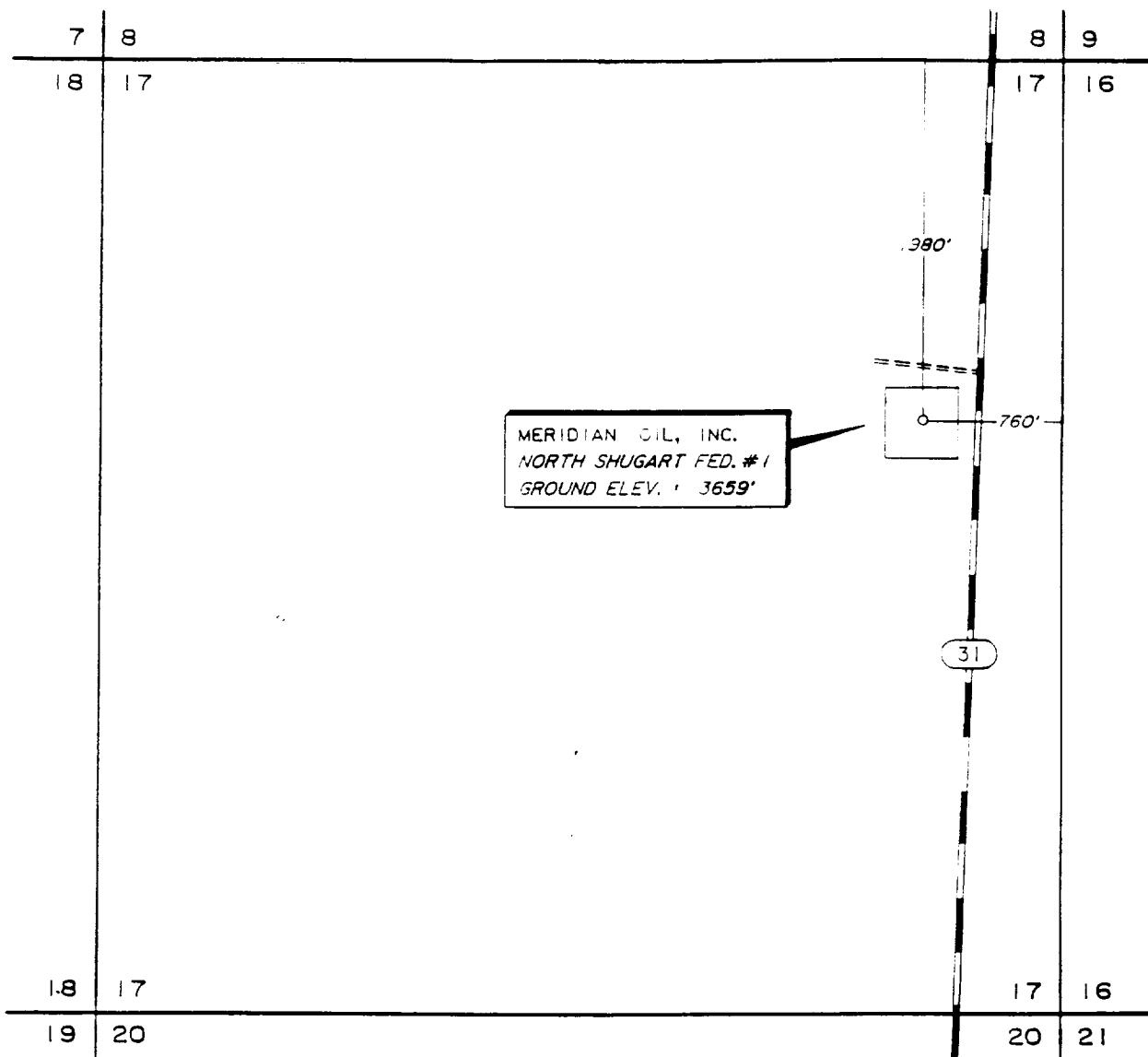


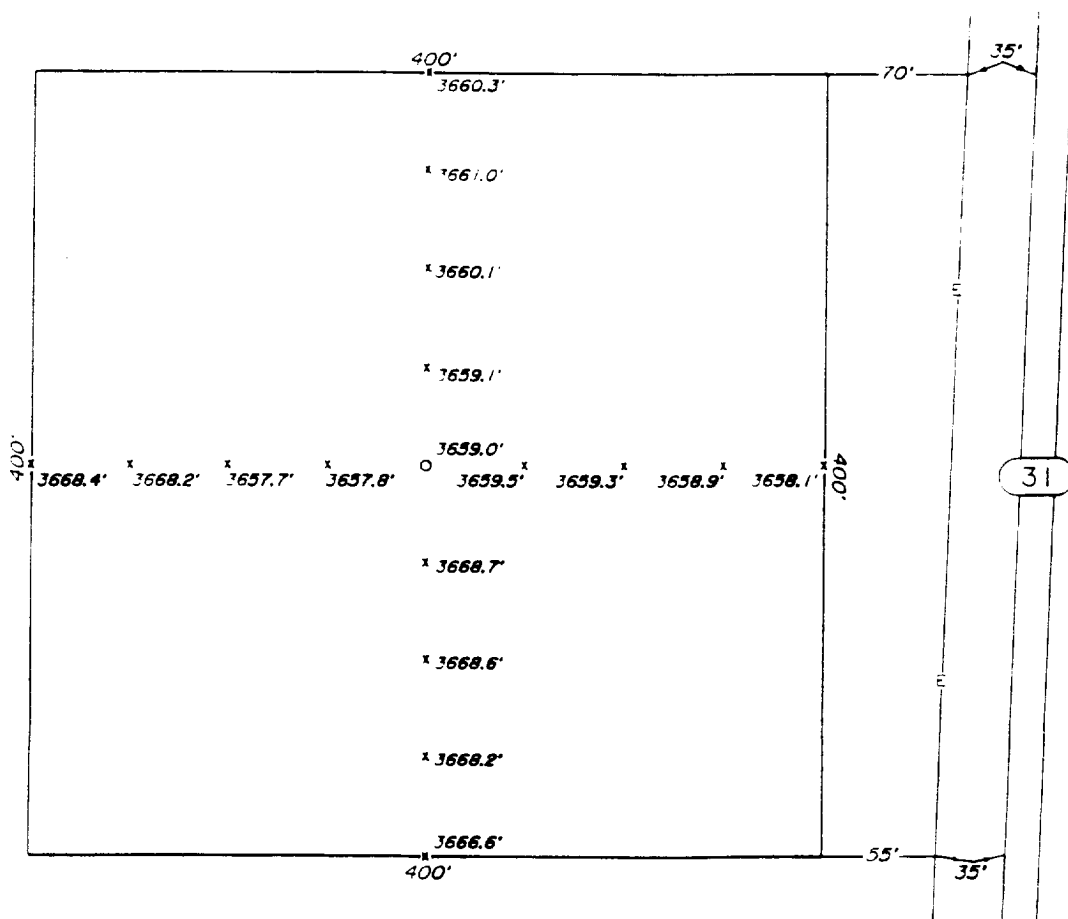
PLAT SHOWING a PROPOSED
WELL LOCATION and LEA . . . OAD in
SECTION 17, T-18-S, R- . . . E,
EDDY COUNTY, NEW MEXICO

FROM THE EJECT. OF U.S. 82 & HWY 31, 5.6 MILES
EAST OF LOCO HILLS, GO SOUTH 4.5 MILES ON
HWY 31 TO A POINT ON THE NORTH LINE OF
SECTION 17 : 350' WEST OF ITS NE CORNER



MERIDIAN OIL, INC.
NORTH SHUGART FED. #1
GROUND ELEV. : 3659'

PLAN VIEW
1" = 1000'



DETAIL VIEW
1" = 100'



NO.	REVISION	DATE	BY
SURVEYED BY :		G.W.S.	
DRAWN BY :		P.A.D.	
APPROVED BY :		D.R.K.	

MERIDIAN OIL, INC.

MIDLAND, TEXAS

SURVEYING AND MAPPING BY
TOPOGRAPHIC LAND SURVEYORS
MIDLAND, TEXAS

SCALE : AS SHOWN

DATE : MARCH 9, 1990

JOB NO. : 76285

73 NW

SHEET