

NO. OF COPIES RECEIVED	
DISTRIBUTION	
NTA FE	1
E	1
G.S.	2
ND OFFICE	1
ERATOR	1

NEW MEXICO OIL CONSERVATION COMMISSION

JUL 15 1980

O. C. D.  
ARTESIA, OFFICE

30-015-23417

Form C-101  
Revised 1-1-65

5A. Indicate Type of Lease STATE <input checked="" type="checkbox"/> FEE <input type="checkbox"/>
5. State Oil & Gas Lease No. L-6419
7. Unit Agreement Name
8. Farm or Lease Name Maggie
9. Well No. #2
10. Field and Pool, or Wildcat McMillan, 7-R Queen
12. County Eddy
19. Proposed Depth 550'
19A. Formation Seven Rivers
20. Rotary or C.T. Cable tool
21A. Kind & Status Plug. Bond Statewide
21B. Drilling Contractor Powco Drilling Co.
22. Approx. Date Work will start July 15, 1980

APPLICATION FOR PERMIT TO DRILL, DEEPEN, OR PLUG BACK

Type of Work  
Type of Well  
DRILL ☒ DEEPEN ☐ PLUG BACK ☐  
IL ☒ GAS WELL ☐ OTHER ☐ SINGLE ZONE ☐ MULTIPLE ZONE ☐  
Name of Operator  
Collier Energy, Inc.  
Address of Operator  
P. O. Box 798, Artesia, New Mexico 88210  
Location of Well  
UNIT LETTER C LOCATED 990 FEET FROM THE North LINE  
1650 FEET FROM THE West LINE OF SEC. 32 TWP. 19S RGE. 27E NMPM  
Elevations (Show whether DF, RT, etc.)  
3328 GL

PROPOSED CASING AND CEMENT PROGRAM

SIZE OF HOLE	SIZE OF CASING	WEIGHT PER FOOT	SETTING DEPTH	SACKS OF CEMENT	EST. TOP
10"	8 5/8"	24#	80'	50 sxs.	surface
8"	4 1/2"	9 1/2#	550'	225 sxs.	surface

Plan to drill a Seven Rivers test. Will spud with a 10" bit. Plan to drill to 80'. If no water is encountered, will then reduce to 8" bit. Drill to T.D. of 550'. If there are sufficient shows will then run 550' of 4 1/2" casing and cement with 225 sacks of cement back to surface.

\*8 5/8" casing will only be run if water is encountered above 80'. Will then cement back to surface.

APPROVAL AND  
FOR 90 DAYS UNLESS  
DRILLING COMMENCED,

EXPIRES 10-16-80

LOVE SPACE DESCRIBE PROPOSED PROGRAM: IF PROPOSAL IS TO DEEPEN OR PLUG BACK, GIVE DATA ON PRESENT PRODUCTIVE ZONE AND PROPOSED NEW PRODUCTION. GIVE BLOWOUT PREVENTER PROGRAM, IF ANY.

I hereby certify that the information above is true and complete to the best of my knowledge and belief.

by Rhonda Parrish Title Secretary Date 7-11-80

(This space for State Use)

APPROVED BY W. R. Gessert TITLE SUPERVISOR, DISTRICT II DATE JUL 16 1980

CONDITIONS OF APPROVAL, IF ANY:

Cement must be cemented to surface behind 4 1/2" casing

Notify N.M.O.C.C. in sufficient time to witness cementing

**NEW MEXICO OIL CONSERVATION COMMISSION  
WELL LOCATION AND ACREAGE DEDICATION PLAT**

Form C-102  
Supersedes C-128  
Effective 1-1-65

All distances must be from the outer boundaries of the Section.

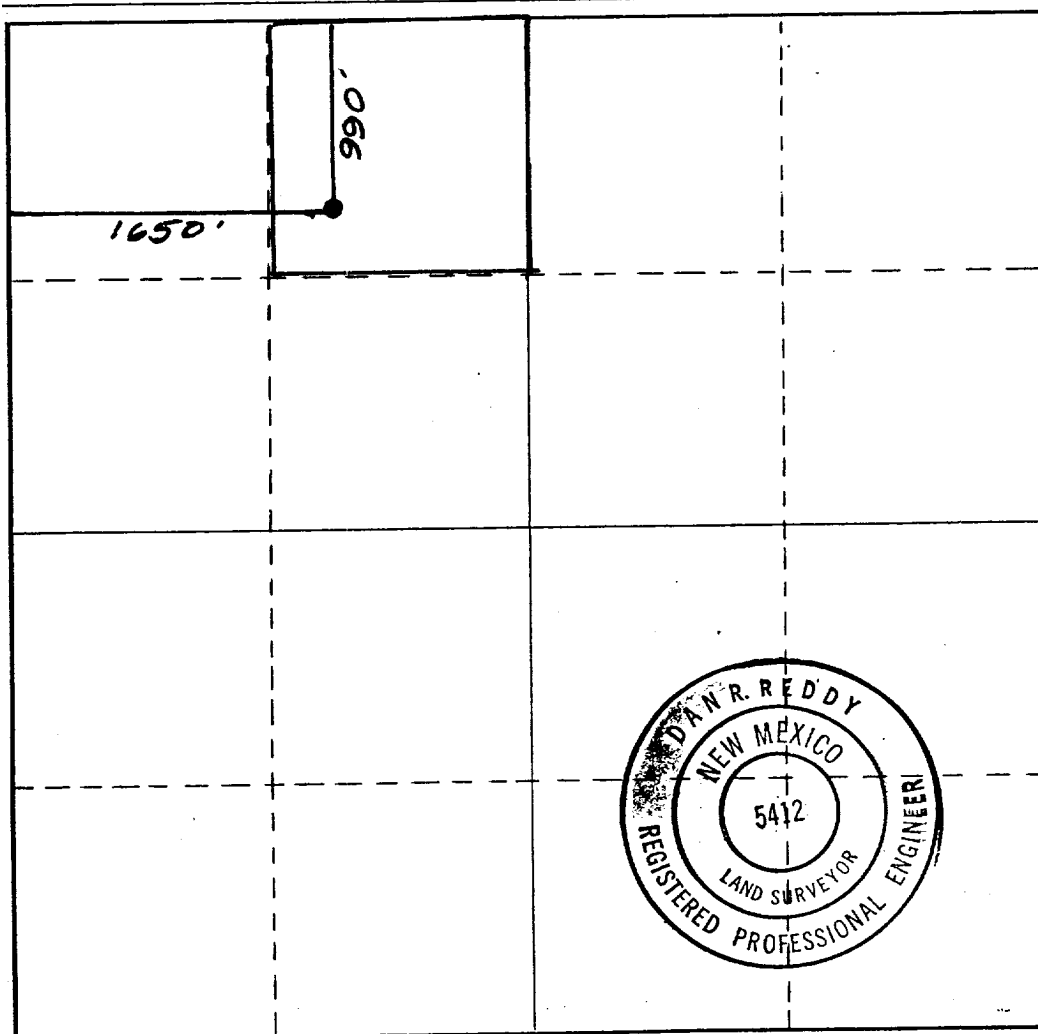
Operator <b>Collier Energy Inc.</b>			Lease <b>Maggie</b>		Well No. <b>2</b>
Unit Letter <b>C</b>	Section <b>32</b>	Township <b>19 South</b>	Range <b>27 East</b>	County <b>Eddy</b>	
Actual Footage Location of Well:					
<b>990</b> feet from the <b>North</b> line and		<b>1650</b> feet from the <b>West</b> line			
Ground Level Elev: <b>3328</b>	Producing Formation <b>Seven Rivers</b>	Pool <b>McMillan 7-Rivers Queen</b>	Dedicated Acreage: <b>40</b> Acres		

1. Outline the acreage dedicated to the subject well by colored pencil or hachure marks on the plat below.
2. If more than one lease is dedicated to the well, outline each and identify the ownership thereof (both as to working interest and royalty).
3. If more than one lease of different ownership is dedicated to the well, have the interests of all owners been consolidated by communitization, unitization, force-pooling, etc?

☐ Yes    ☐ No    If answer is "yes," type of consolidation \_\_\_\_\_

If answer is "no," list the owners and tract descriptions which have actually been consolidated. (Use reverse side of this form if necessary.) \_\_\_\_\_

No allowable will be assigned to the well until all interests have been consolidated (by communitization, unitization, forced-pooling, or otherwise) or until a non-standard unit, eliminating such interests, has been approved by the Commission.



**CERTIFICATION**

I hereby certify that the information contained herein is true and complete to the best of my knowledge and belief.

*Cheri Monk*

Name  
**Cheri Monk**  
Position  
**Administrative Assistant**  
Company  
**Collier Energy, Inc.**  
Date  
**July 15, 1980**

I hereby certify that the well location shown on this plat was plotted from field notes of actual surveys made by me or under my supervision, and that the same is true and correct to the best of my knowledge and belief.

Date Surveyed  
**July 11, 1980**  
Registered Professional Engineer and/or Land Surveyor  
*Dan R. Reddy*  
Certificate No.  
**NMPE&LS #5412**

0 330 660 990 1320 1650 1980 2310 2640 2970 3300 3630 3960 4290 4620 4950 5280 5610 5940 6270 6600