

NEW MEXICO OIL CONSERVATION COMMISSION
WELL LOCATION AND ACREAGE DEDICATION PLAT

Form O-11
Supersedes O-12H
Effective 1-1-65

All distances must be from the outer boundaries of the Section

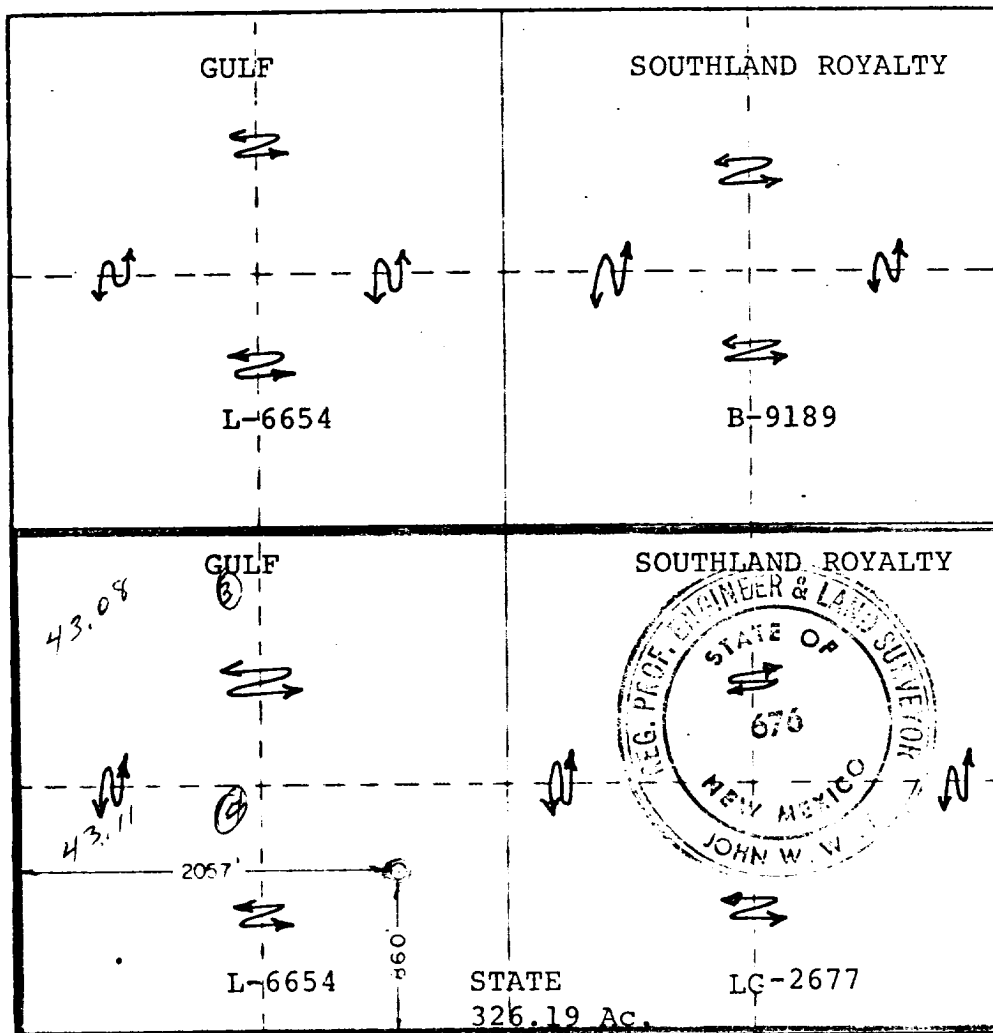
Owner Southland Royalty Co.		Lease State 19 Comm.		Well No. 2
Section N	Range 19	Meridian 19 South	Block 28 East	County Eddy
Actual Footage Location of Well:				
860	feet from line South	2057	feet from line West	
Ground Level Elev. 3493	Producing Formation Morrow	Foot Undesignated	Designated Acreage 326.19	

1. Outline the acreage dedicated to the subject well by colored pencil or hachure marks on the plat below.
2. If more than one lease is dedicated to the well, outline each and identify the ownership thereof (both as to working interest and royalty).
3. If more than one lease of different ownership is dedicated to the well, have the interests of all owners been consolidated by communitization, unitization, force-pooling, etc?

☒ Yes ☐ No If answer is "yes," type of consolidation Communitization

If answer is "no," list the owners and tract descriptions which have actually been consolidated. (Use reverse side of this form if necessary.) _____

No allowable will be assigned to the well until all interests have been consolidated (by communitization, unitization, forced-pooling, or otherwise) or until a non-standard unit, eliminating such interests, has been approved by the Commission.



CERTIFICATION

I hereby certify that the information contained herein is true and complete to the best of my knowledge and belief.

Name
C. Harvey Can
Position
District Engineer
Company
SOUTHLAND ROYALTY COMPANY
Date
July 19, 1978

I hereby certify that the well location shown on this plat was plotted from field notes of actual surveys made by me or under my supervision, and that the same is true and correct to the best of my knowledge and belief.

March 13, 1978

Date Surveyed
Registered Professional Engineer and/or Land Surveyor
John W. West
Certificate No. John W. West 676
Ronald J. Eidson 3239