

**NEW MEXICO OIL CONSERVATION COMMISSION
WELL LOCATION AND ACREAGE DEDICATION PLAT**

Form C-102
Supersedes C-128
Effective 1-1-65

All distances must be from the outer boundaries of the Section.

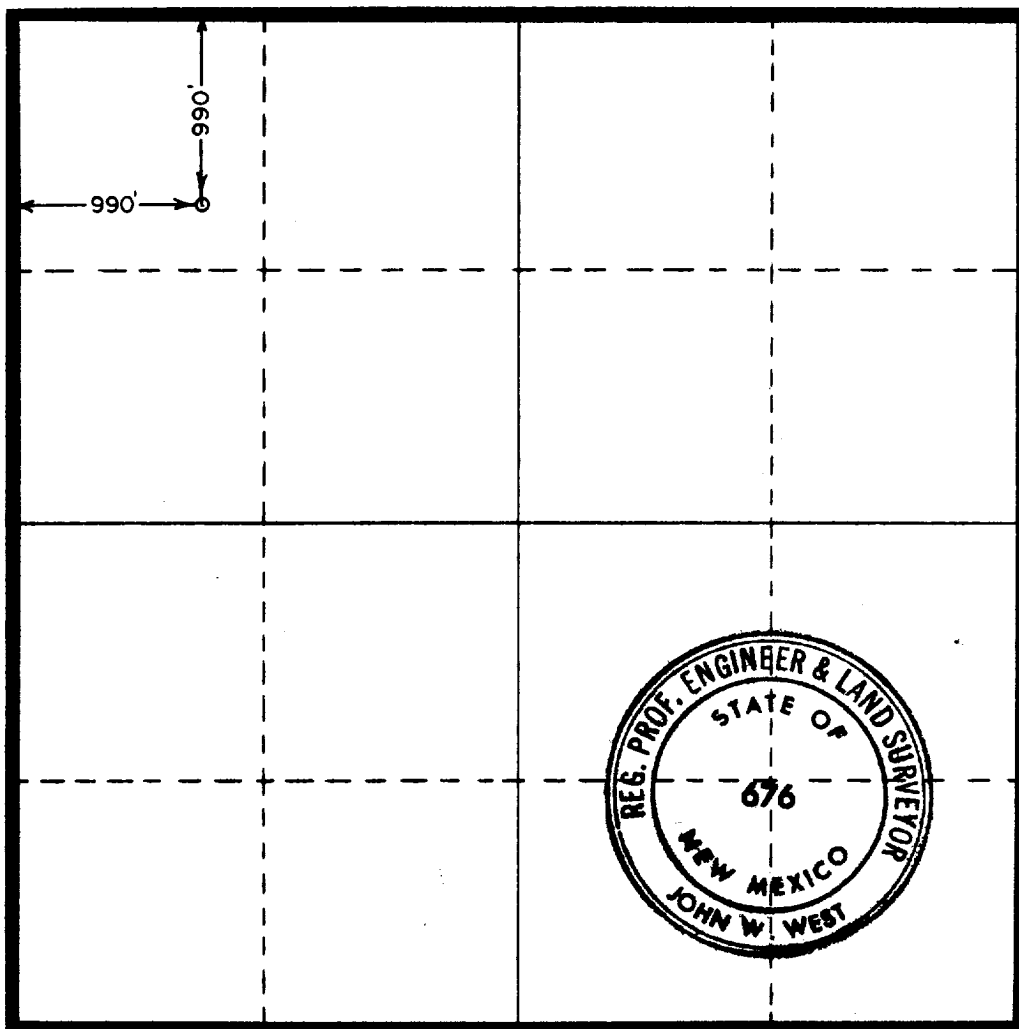
Operator TEXAS OIL & GAS CO.		Lease HELBIG FEDERAL		Well No. 1
Unit Letter D	Section 22	Township 22 SOUTH	Range 23 EAST	County EDDY
Actual Footage Location of Well: 990 feet from the NORTH line and 990 feet from the WEST line				
Ground Level Elev. 4194.3	Producing Formation Indian Basin	Pool <i>Upper Indian Basin - Upper Perm</i> Perm	Dedicated Acreage: 640 Acres	

1. Outline the acreage dedicated to the subject well by colored pencil or hachure marks on the plat below *acreage factor 0.55*
2. If more than one lease is dedicated to the well, outline each and identify the ownership thereof (both as to working interest and royalty).
3. If more than one lease of different ownership is dedicated to the well, have the interests of all owners been consolidated by communitization, unitization, force-pooling, etc?

Yes No If answer is "yes," type of consolidation _____

If answer is "no," list the owners and tract descriptions which have actually been consolidated. (Use reverse side of this form if necessary.) _____

No allowable will be assigned to the well until all interests have been consolidated (by communitization, unitization, forced-pooling, or otherwise) or until a non-standard unit, eliminating such interests, has been approved by the Commission.



CERTIFICATION

I hereby certify that the information contained herein is true and complete to the best of my knowledge and belief.

J. R. Colter
J. R. Colter

Name
Petroleum Engineer

Position
Texas Oil & Gas Corp.

Company
10-14-71

Date

I hereby certify that the well location shown on this plat was plotted from field notes of actual surveys made by me or under my supervision, and that the same is true and correct to the best of my knowledge and belief.

Date Surveyed
OCTOBER 8, 1971

Registered Professional Engineer and/or Land Surveyor

John W. West

Certificate No. **676**