

District I  
1625 N. French Dr., Hobbs, NM 88240  
District II  
811 South First, Artesia, NM 88210  
District III  
1000 Rio Brazos Road, Aztec, NM 87410  
District IV  
2040 South Pacheco, Santa Fe, NM 87505

State of New Mexico  
Energy Minerals and Natural Resources

*OH*  
Form C-1014  
Revised March 17, 1999  
Submit to appropriate District Office  
State Lease - 6 Copies  
Fee Lease - 5 Copies

Oil Conservation Division  
2040 South Pacheco  
Santa Fe, NM 87505

AMENDED REPORT

**APPLICATION FOR PERMIT TO DRILL, RE-ENTER, DEEPEN, PLUGBACK, OR ADD A ZONE**

<sup>1</sup> Operator Name and Address OXY USA Inc. P.O. Box 50250 Midland, TX 79710-0250		<sup>2</sup> OGRID Number 16696
		<sup>3</sup> API Number 30-015- 31243
<sup>3</sup> Property Code 26227	<sup>5</sup> Property Name OXY Elizando A Com.	<sup>6</sup> Well No. 6

<sup>7</sup> Surface Location

UL or lot no.	Section	Township	Range	Lot Idn	Feet from the	North/South line	Feet from the	East/West line	County
P	20	21S	27E		1230	South	990	East	Eddy

<sup>8</sup> Proposed Bottom Hole Location If Different From Surface

UL or lot no.	Section	Township	Range	Lot Idn	Feet from the	North/South line	Feet from the	East/West line	County
<sup>9</sup> Proposed Pool 1 Burton Flat Morrow					<sup>10</sup> Proposed Pool 2				

<sup>11</sup> Work Type Code N	<sup>12</sup> Well Type Code G	<sup>13</sup> Cable/Rotary R	<sup>14</sup> Lease Type Code P	<sup>15</sup> Ground Level Elevation 3198'
<sup>16</sup> Multiple No	<sup>17</sup> Proposed Depth 11800'	<sup>18</sup> Formation Morrow	<sup>19</sup> Contractor UTI	<sup>20</sup> Spud Date 8/15/00

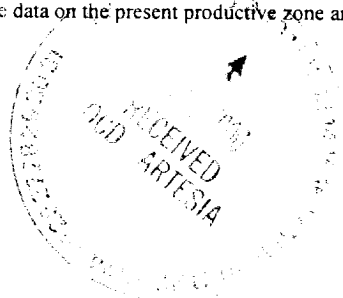
**Minimum WOC time 18 hrs.** <sup>21</sup> Proposed Casing and Cement Program

Hole Size	Casing Size	Casing weight/foot	Setting Depth	Sacks of Cement	Estimated TOC
17-1/2"	13-3/8"	48#	600'	550	Surface
12-1/4"	9 5/8" 8 5/8"	36# 32#	3000' - 2700'	850	Surface
8-3/4"	5-1/2"	17#	11800'	875	Est-8300'
Cement to cover all of gas & water bearing zones					

22 Describe the proposed program. If this application is to DEEPEN or PLUG BACK, give the data on the present productive zone and proposed new productive zone. Describe the blowout prevention program, if any. Use additional sheets if necessary.

**Notify OCD at SPUD & TIME**  
**to witness cementing the**  
**13 3/8" = 8 5/8" casing.**

SEE OTHER SIDE



<sup>23</sup> I hereby certify that the information given above is true and complete to the best of my knowledge and belief. Signature: <i>David Stewart</i> Printed name: David Stewart Title: Regulatory Analyst Date: 7/2/00 Phone: 915-685-5717	<b>OIL CONSERVATION DIVISION</b>	
	Approved by: <b>ORIGINAL SIGNED BY TIM W. GUM</b> <b>DISTRICT II SUPERVISOR</b> <i>BGA</i>	Title:
Approval Date: <b>JUL 10 2000</b>	Expiration Date: <b>JUL 10 2001</b>	Conditions of Approval: Attached <input type="checkbox"/>

OXY Elizando A Com. #6  
1230 FSL 990 FEL SEC 20 T21S R27E Eddy County, NM

PROPOSED TD: 11800' TVD

BOP PROGRAM: 0' - 600' None  
600' - 3000' 13-5/8" 5M blind and pipe rams with 5M annular preventer.  
3000' - 11800' 11" 5M blind pipe rams with 5M annular preventer and rotating head below 8300'.

CASING: Surface: 13-3/8" OD 48# H40 ST&C new casing set at 600'  
Intermediate: 9-5/8" OD 36# K55 ST&C new casing from 0-3000'  
Production: 5-1/2" OD 17# N80-S95 LT&C new casing from 0-11400'

CEMENT: Surface - Circulate cement with 350sx 35:65 POZ/C with 6% Bentonite + 2% CaCl<sub>2</sub> + .25#/sx Cello-Seal followed by 200sx Cl C with 2% CaCl<sub>2</sub>.  
Intermediate - Circulate cement with 650sx 35:65 POZ/C with 6% Bentonite + 2% CaCl<sub>2</sub> + .25#/sx Cello-Seal followed by 200sx Cl C with 2% CaCl<sub>2</sub>.  
Production - Cement with 800sx 15:61:11 POZ/C/CSE with .5% FL-52 + .5% FL-25 + 8#/sx Gilsomite followed by 75sx Cl C with .7% FL-25. Estimated top of cement is 8300'.

Note: Cement volumes may need to be adjusted to hole caliper.

MUD: 0 - 600' Fresh water/native mud. Lime for pH control (9-10). Paper for seepage. Wt 8.7-9.2 ppg, Vis 32-34 sec  
600' - 3000' Fresh/\*Brine water. Lime for pH control (10.0-10.5). Paper for seepage. Wt 8.3-9.0/10.0-10.1ppg, Vis 28-29 sec  
\*Fresh water will be used unless chlorides in the mud system increases to 20000PPM.  
3000' - 8300' Fresh water. Lime for pH control (9-9.5). Paper for seepage. Wt 8.3-8.5 ppg, Vis 28-29 sec  
8300' - 10000' Cut brine. Lime for pH control (10-10.5). Wt 9.6-10.0 ppg, Vis 28-29sec  
10000' - 11400' Mud up with an Duo Vis/Flo Trol mud system. Wt 9.6-10.0ppg, Vis 32-36sec, WL<10cc

DISTRICT I  
1625 N. French Dr., Hobbs, NM 88240

DISTRICT II  
811 South First, Artesia, NM 88210

DISTRICT III  
1000 Rio Brazos Rd., Aztec, NM 87410

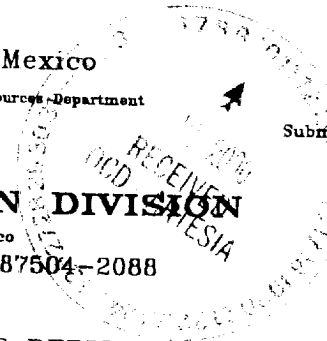
DISTRICT IV  
2040 South Pacheco, Santa Fe, NM 87505

State of New Mexico  
Energy, Minerals and Natural Resources Department

Form C-102  
Revised March 17, 1999

Submit to Appropriate District Office  
State Lease - 4 Copies  
Fee Lease - 3 Copies

**OIL CONSERVATION DIVISION**  
2040 South Pacheco  
Santa Fe, New Mexico 87504-2088



AMENDED REPORT

**WELL LOCATION AND ACREAGE DEDICATION PLAT**

API Number 30-015-	Pool Code 73280	Pool Name Burton Flat Morrow
Property Code	Property Name OXY ELIZANDO "A" COM.	Well Number 6
OGRID No. 16696	Operator Name OXY USA INC.	Elevation 3198'

Surface Location

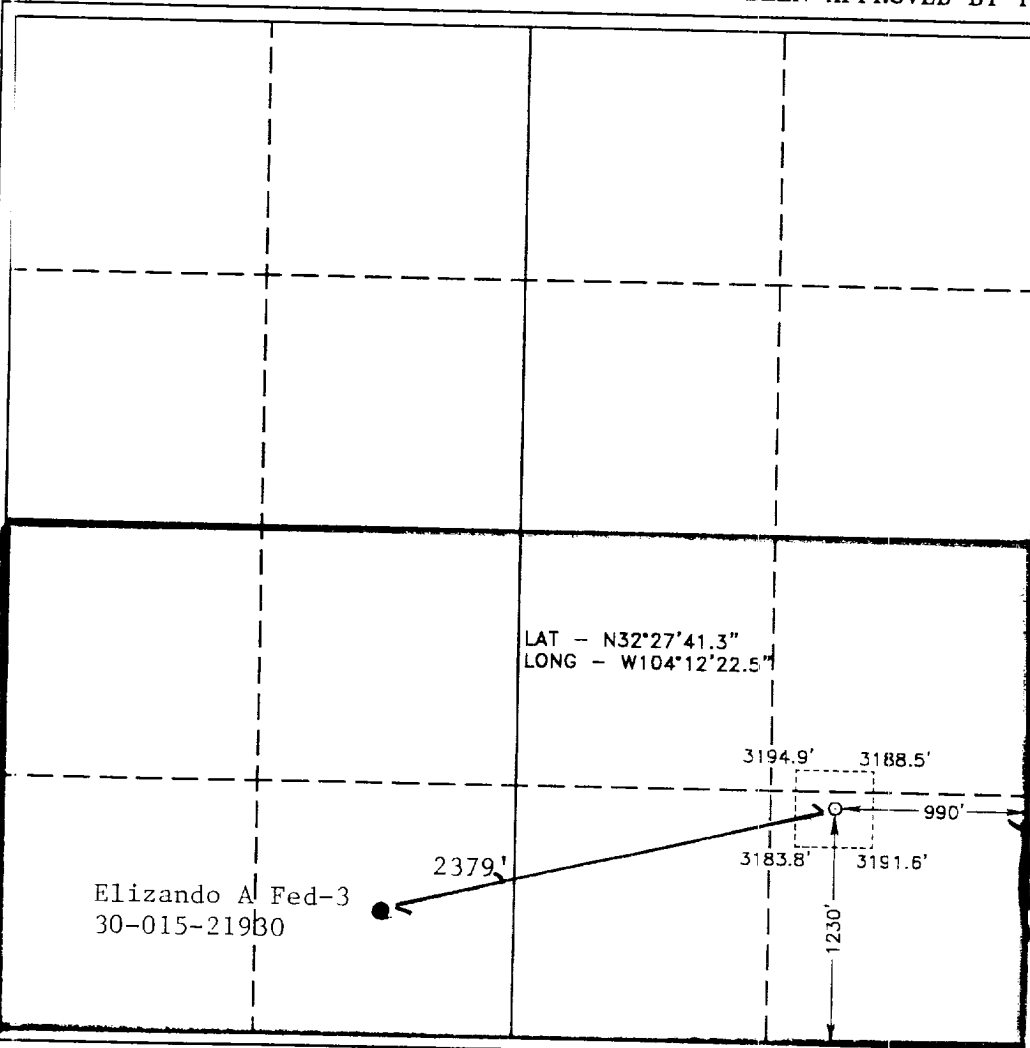
UL or lot No.	Section	Township	Range	Lot Idn	Feet from the	North/South line	Feet from the	East/West line	County
P	20	21 S	27 E		1230	SOUTH	990	EAST	EDDY

Bottom Hole Location If Different From Surface

UL or lot No.	Section	Township	Range	Lot Idn	Feet from the	North/South line	Feet from the	East/West line	County

Dedicated Acres 320	Joint or Infill Y	Consolidation Code	Order No.
------------------------	----------------------	--------------------	-----------

NO ALLOWABLE WILL BE ASSIGNED TO THIS COMPLETION UNTIL ALL INTERESTS HAVE BEEN CONSOLIDATED OR A NON-STANDARD UNIT HAS BEEN APPROVED BY THE DIVISION



**OPERATOR CERTIFICATION**

I hereby certify the the information contained herein is true and complete to the best of my knowledge and belief.

*David Stewart*  
Signature

David Stewart  
Printed Name

Regulatory Analyst  
Title

7/7/00  
Date

**SURVEYOR CERTIFICATION**

I hereby certify that the well location shown on this plat was plotted from field notes of actual surveys made by me or under my supervision, and that the same is true and correct to the best of my belief.

April 20, 2000  
Date Surveyed

*[Signature]*  
Signature & Seal of Professional Surveyor

7977  
V.O. No. 65A

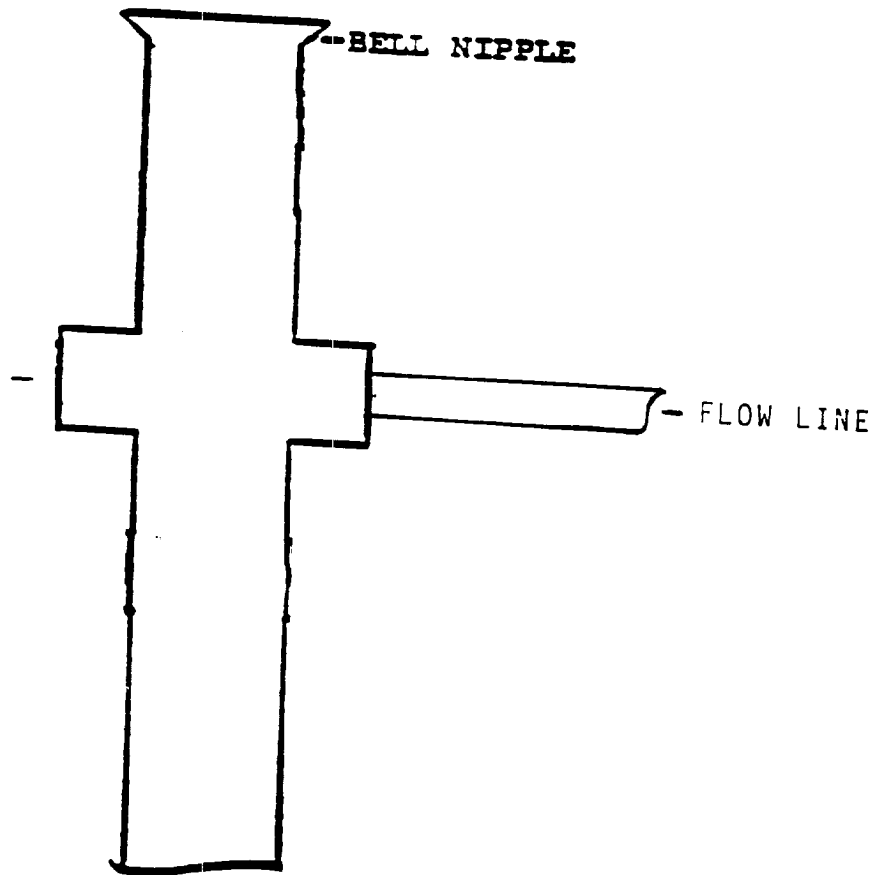
L. Jones 7977  
Professional Surveyor

HASIN SURVEYS

EXHIBIT A



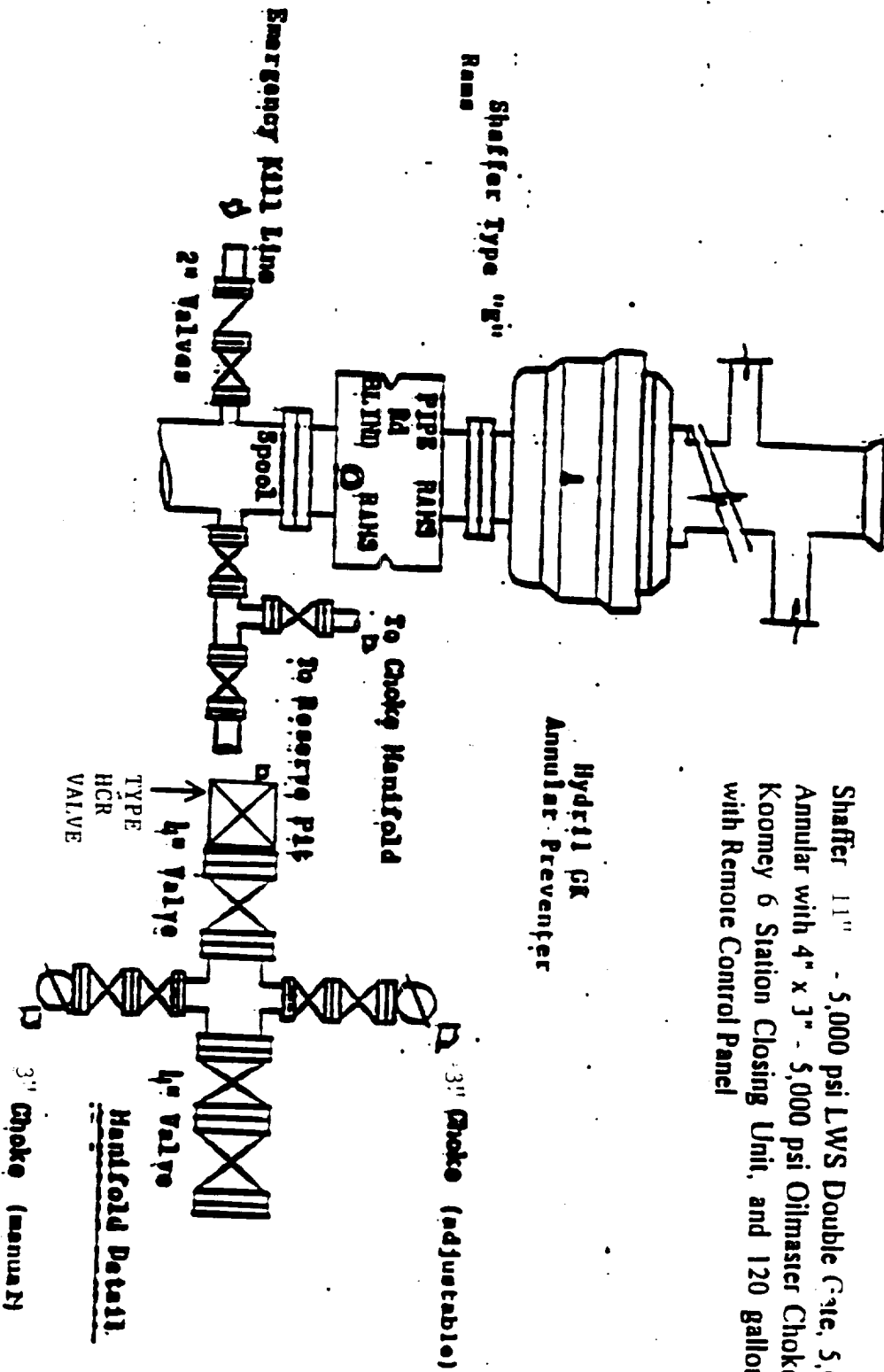
ANNULAR PREVENTOR  
TO BE USED AS DIVERTOR ONLY



STARTING HEAD

**BLOWOUT PREVENTOR SCHEMATIC**

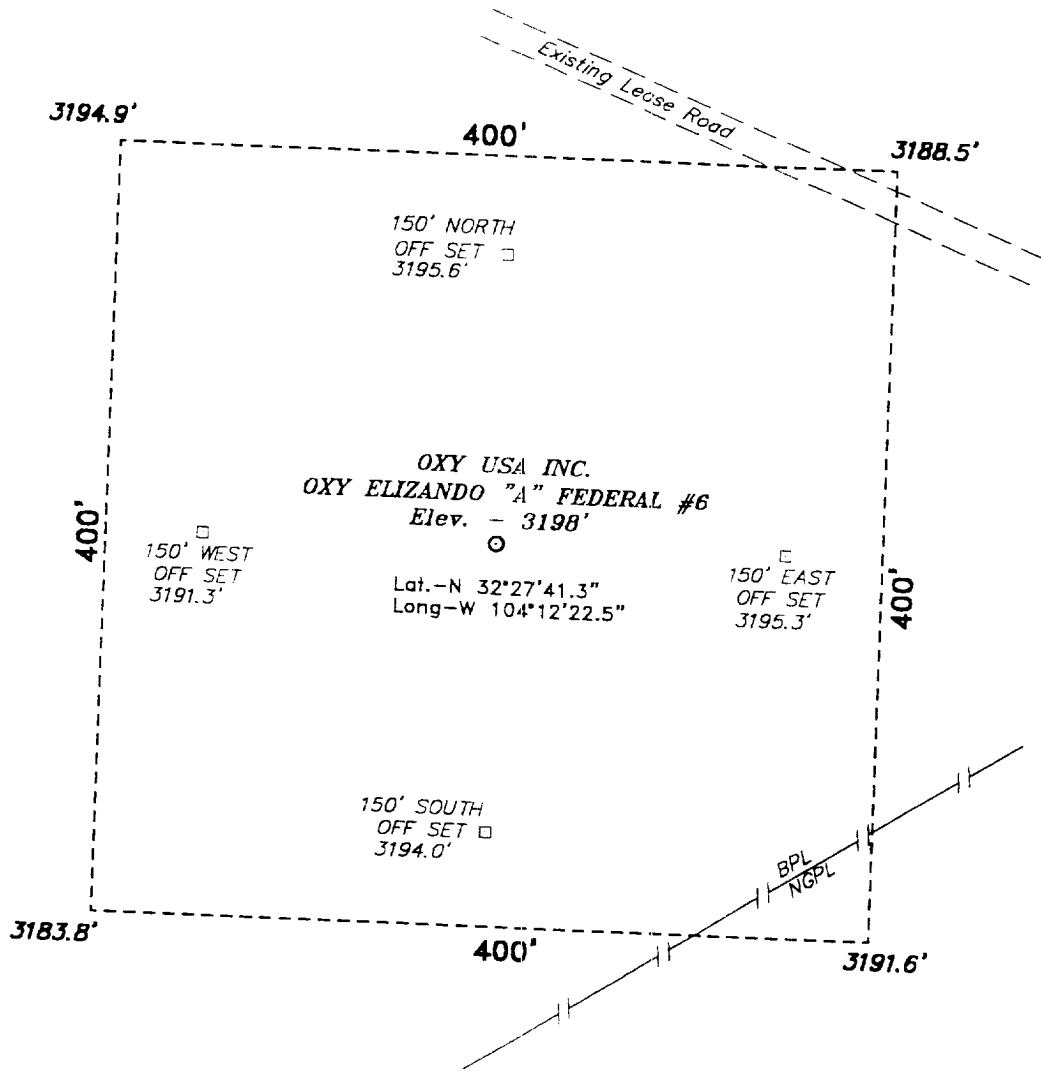
EXHIBIT A



Shaffer 11" - 5,000 psi LWS Double Gate, 5,000 psi Shaffer Annular with 4" x 3" - 5,000 psi Oilmaster Choke Manifold and Koomey 6 Station Closing Unit, and 120 gallon Accumulator with Remote Control Panel

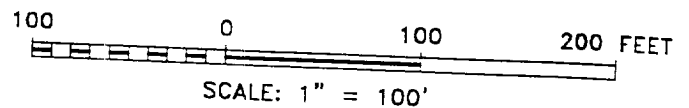
Choke Manifold

SECTION 20, TOWNSHIP 21 SOUTH, RANGE 27 EAST, N.M.P.M.,  
 EDDY COUNTY, NEW MEXICO.



Directions to Location:

FROM THE JUNCTION OF US HWY 62/180 AND CO RD. 604(NORTH LOOP ROAD), GO NORTH AND WEST ON CO. RD. 604 APPROX. 5.0 MILES TO A POINT WHICH LIES APPROX. 0.75 MILES FROM THE PROPOSED WELL LOCATION.



**Oxy USA Inc.**

REF: Oxy Elizando "A" Fed. No. 6 / Well Pad Topo

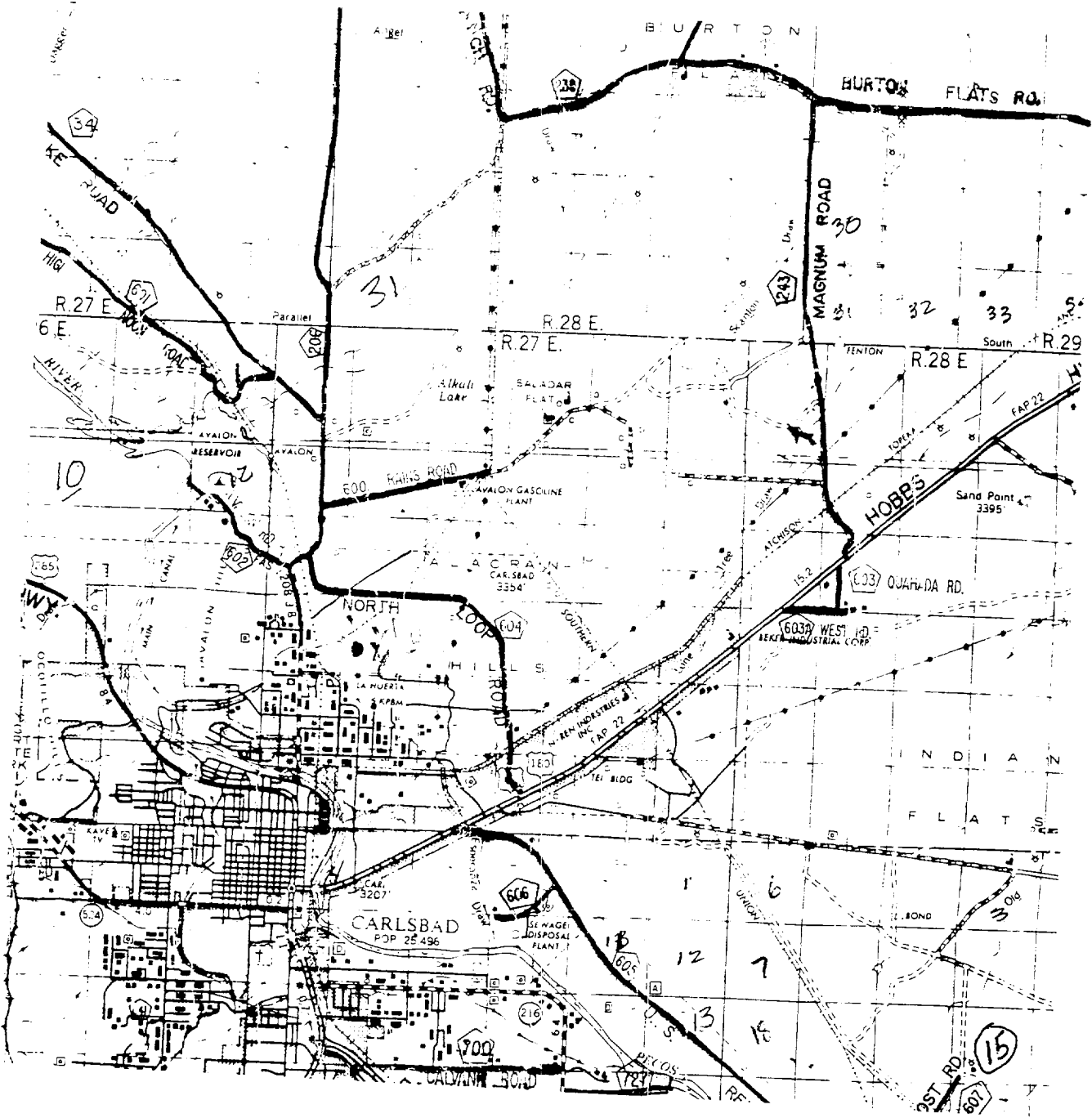
THE OXY ELIZANDO "A" FED. No. 6 LOCATED 1230' FROM THE SOUTH LINE AND 990' FROM THE EAST LINE OF SECTION 20, TOWNSHIP 21 SOUTH, RANGE 27 EAST, N.M.P.M., EDDY COUNTY, NEW MEXICO.

**Basin Surveys** P.O. BOX 1786 - HOBBS, NEW MEXICO

W.D. Number: 0165 Drawn By: **K. GOAD**  
 Date: 04-28-2000 Disk: KJG #122 - 0165A.DWG

Survey Date: 04-20-2000 Sheet 1 of 1





OXY ELIZANDO "A" FEDERAL #6  
 Located at 1230' FSL and 990' FEL  
 Section 20, Township 21 South, Range 27 East,  
 N.M.P.M., Eddy County, New Mexico.

**basin surveys**  
 focused on excellence  
 in the oilfield

P.O. Box 1786  
 1120 N. West County Rd.  
 Hobbs, New Mexico 88241  
 (505) 393-7316 - Office  
 (505) 392-3074 - Fax  
 basinsurveys.com

W.O. Number:	0165AA -- KJG #122
Survey Date:	04-20-2000
Scale:	1" = 2 MILES
Date:	04-28-2000

OXY USA INC.