

DISTRICT I  
P.O. Box 1980, Hobbs, NM 88241-1980

State of New Mexico  
Energy, Minerals and Natural Resources Department

Form C-102  
Revised February 10, 1994  
Submit to Appropriate District Office  
State Lease - 4 Copies  
Fee Lease - 3 Copies

DISTRICT II  
P.O. Drawer DD, Artesia, NM 88211-0719

OIL CONSERVATION DIVISION

DISTRICT III  
1000 Rio Brazos Rd., Aztec, NM 87410

P.O. Box 2088

Santa Fe, New Mexico 87504-2088

AMENDED REPORT

DISTRICT IV  
P.O. BOX 2088, SANTA FE, N.M. 87504-2088

WELL LOCATION AND ACREAGE DEDICATION PLAT

API Number		Pool Code	Pool Name
		33865	Indian Basin Upper Penn. Associated
Property Code	Property Name		Well Number
6409	INDIAN HILLS UNIT		24
OGRID No.	Operator Name		Elevation
14021	MARATHON OIL COMPANY		3658

Surface Location

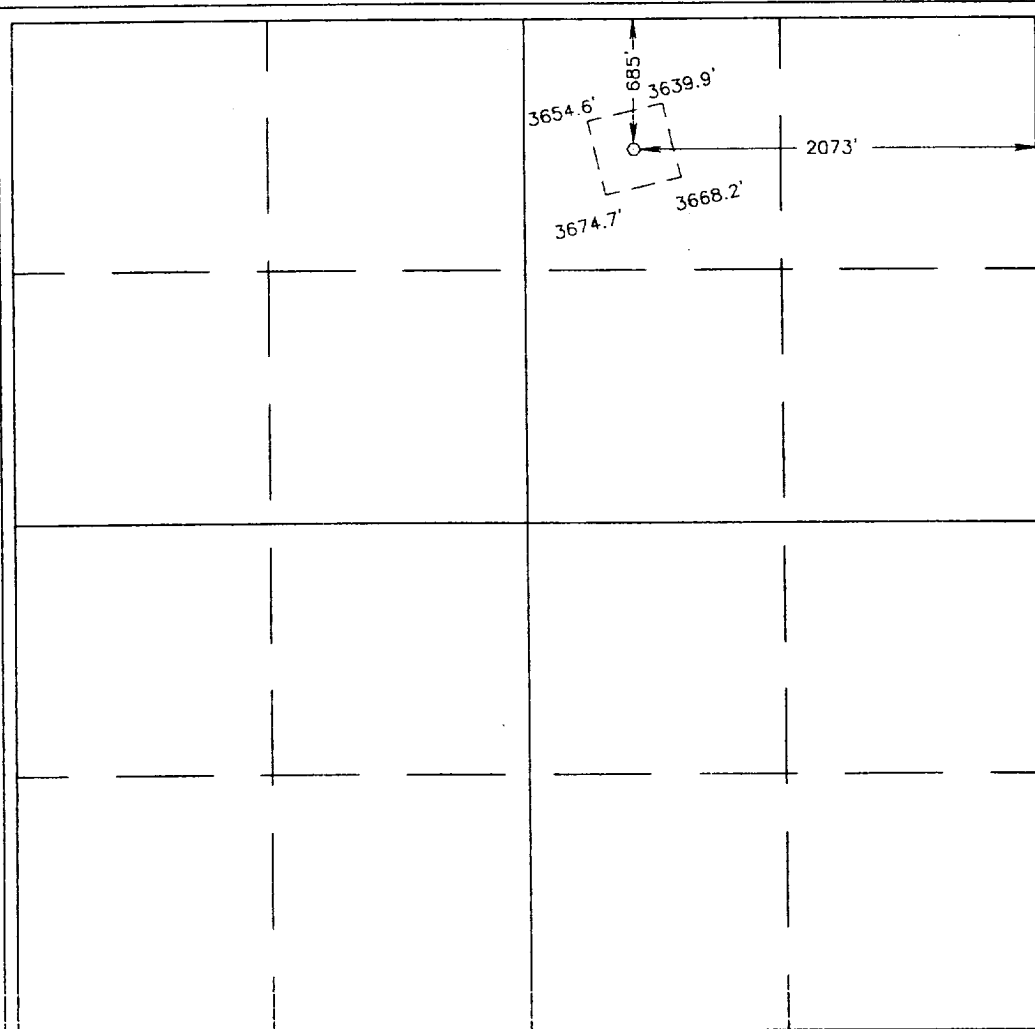
UL or lot No.	Section	Township	Range	Lot Idn	Feet from the	North/South line	Feet from the	East/West line	County
B	28	21 S	24 E		685	NORTH	2073	EAST	EDDY

Bottom Hole Location If Different From Surface

UL or lot No.	Section	Township	Range	Lot Idn	Feet from the	North/South line	Feet from the	East/West line	County
J	21	21 S	24 E		2139	South	1764	East	Eddy

Dedicated Acres	Joint or Infill	Consolidation Code	Order No.
320 E/2			

NO ALLOWABLE WILL BE ASSIGNED TO THIS COMPLETION UNTIL ALL INTERESTS HAVE BEEN CONSOLIDATED  
OR A NON-STANDARD UNIT HAS BEEN APPROVED BY THE DIVISION



**OPERATOR CERTIFICATION**

I hereby certify that the information contained herein is true and complete to the best of my knowledge and belief.

*Jerry Fletcher*  
Signature

Jerry Fletcher  
Printed Name

Engineer Tech.  
Title

6-15-00  
Date

---

**SURVEYOR CERTIFICATION**

I hereby certify that the well location shown on this plat was plotted from field notes of actual surveys made by me or under my supervision, and that the same is true and correct to the best of my belief.

JUNE 13, 2000  
Date Surveyed

DC

Signature & Seal of Professional Surveyor

*Ronald J. Edson* 6/14/00  
Professional Surveyor

00-11-0746

---

Certificate No. RONALD J. EDSON 3239  
GARY EDSON 12641  
MAGNUS McDONALD 12185