

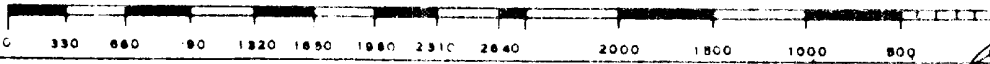
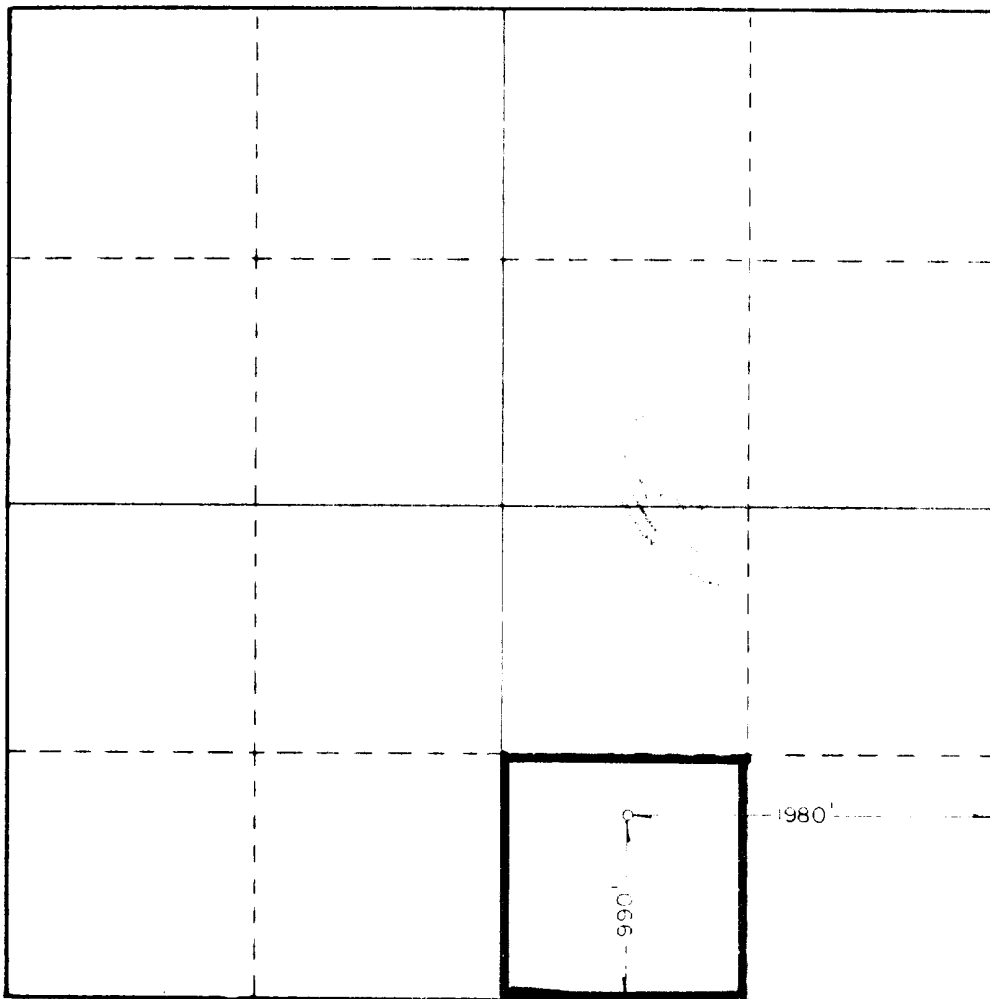


NEW MEXICO OIL CONSERVATION COMMISSION  
WELL LOCATION AND ACREAGE DEDICATION PLAT

Form C-102  
Supersedes C-128  
Effective 1-1-65

All distances must be from the outer boundaries of the Section

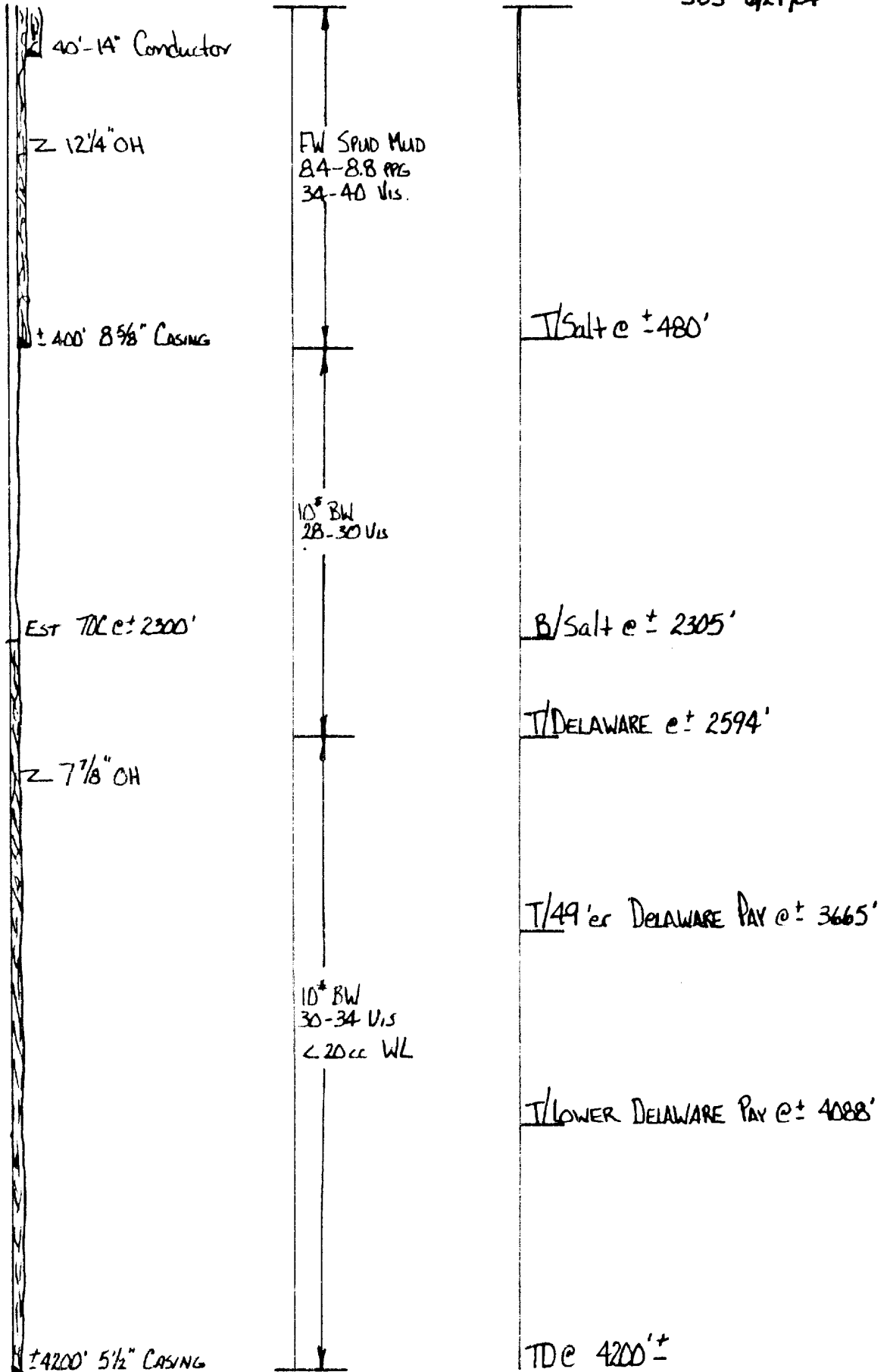
Operator PERRY R. BASS		Lease BASS 10 FEDERAL			Well No. 3
Init. Letter O	Section 10	Township 23S	Range 28E	County LODY	
Actual Footage Location of Well: 990 feet from the SOUTH line and 1950 feet from the EAST line					
Ground Level Elev. 3119.5	Producing Formation DELAWARE	Pool EDDY UNDESIGNATED	Dedicated Acreage: 40 Acres		
<p>1. Outline the acreage dedicated to the subject well by colored pencil or hachure marks on the plat below.</p> <p>2. If more than one lease is dedicated to the well, outline each and identify the ownership thereof (both as to working interest and royalty).</p> <p>3. If more than one lease of different ownership is dedicated to the well, have the interests of all owners been consolidated by communitization, unitization, force-pooling, etc?</p> <p><input type="checkbox"/> Yes <input checked="" type="checkbox"/> No If answer is "yes," type of consolidation _____</p> <p>If answer is "no," list the owners and tract descriptions which have actually been consolidated. (Use reverse side of this form if necessary.) _____</p> <p>No allowable will be assigned to the well until all interests have been consolidated (by communitization, unitization, forced-pooling, or otherwise) or until a non-standard unit, eliminating such interests, has been approved by the Commission.</p>					



CERTIFICATION	
I hereby certify that the information contained herein is true and complete to the best of my knowledge and belief.	
<i>Stephen D. Smith</i>	
Name	
STEPHEN D. SMITH	
Position	
DRLG. ENGINEER ASSISTANT	
Company	
PERRY R. BASS	
Date	
JULY 6, 1984	
I hereby certify that the well location shown on this plat was plotted from field notes of actual surveys made by me or under my supervision, and that the same is true and correct to the best of my knowledge and belief.	
Date Surveyed	
7/3/84	
Registered Professional Engineer and/or Land Surveyor	
<i>John W. West</i>	
Certificate No.	JOHN W. WEST, 676
	RONALD J. EIDSON, 3239

BASS 10 FEDERAL No. ...  
0990' FSL & 1980' FEL Sec 10 T22S, R28E  
EDDY COUNTY, NEW MEXICO

SDS 4/29/84



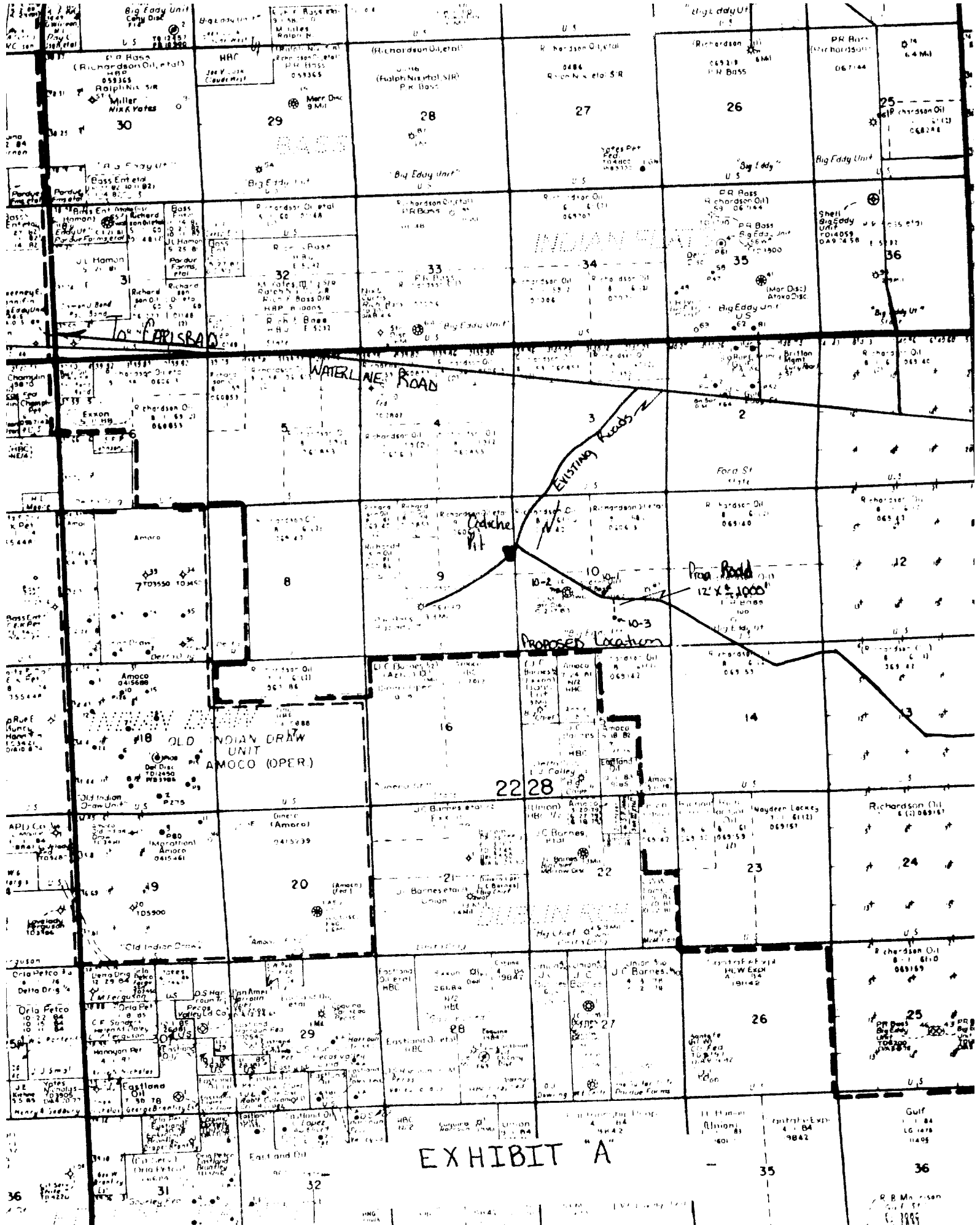


EXHIBIT "A"

36 Gulf 1.84 16.1478 11409  
 R.B. Morrison  
 6.1889

35  
 H.H. Hamon  
 Union 4.1.84 19842  
 Central Exp. 4.1.84 19842

25  
 Richardson Oil 6.1.81.D 069169  
 PR Big Eddy Unit 10.8.59 0A9.74.58  
 Shell Big Eddy Unit 10.8.59 0A9.74.58

26  
 H.W. Exon 4.1.84 19842

27  
 J.C. Barnes 4.1.84 19842

28  
 J.C. Barnes 4.1.84 19842

29  
 Eastland Oil 4.1.84 19842

30  
 Eastland Oil 4.1.84 19842

31  
 Eastland Oil 4.1.84 19842

32  
 Eastland Oil 4.1.84 19842

33  
 Eastland Oil 4.1.84 19842

34  
 Eastland Oil 4.1.84 19842

35  
 Eastland Oil 4.1.84 19842

36  
 Eastland Oil 4.1.84 19842

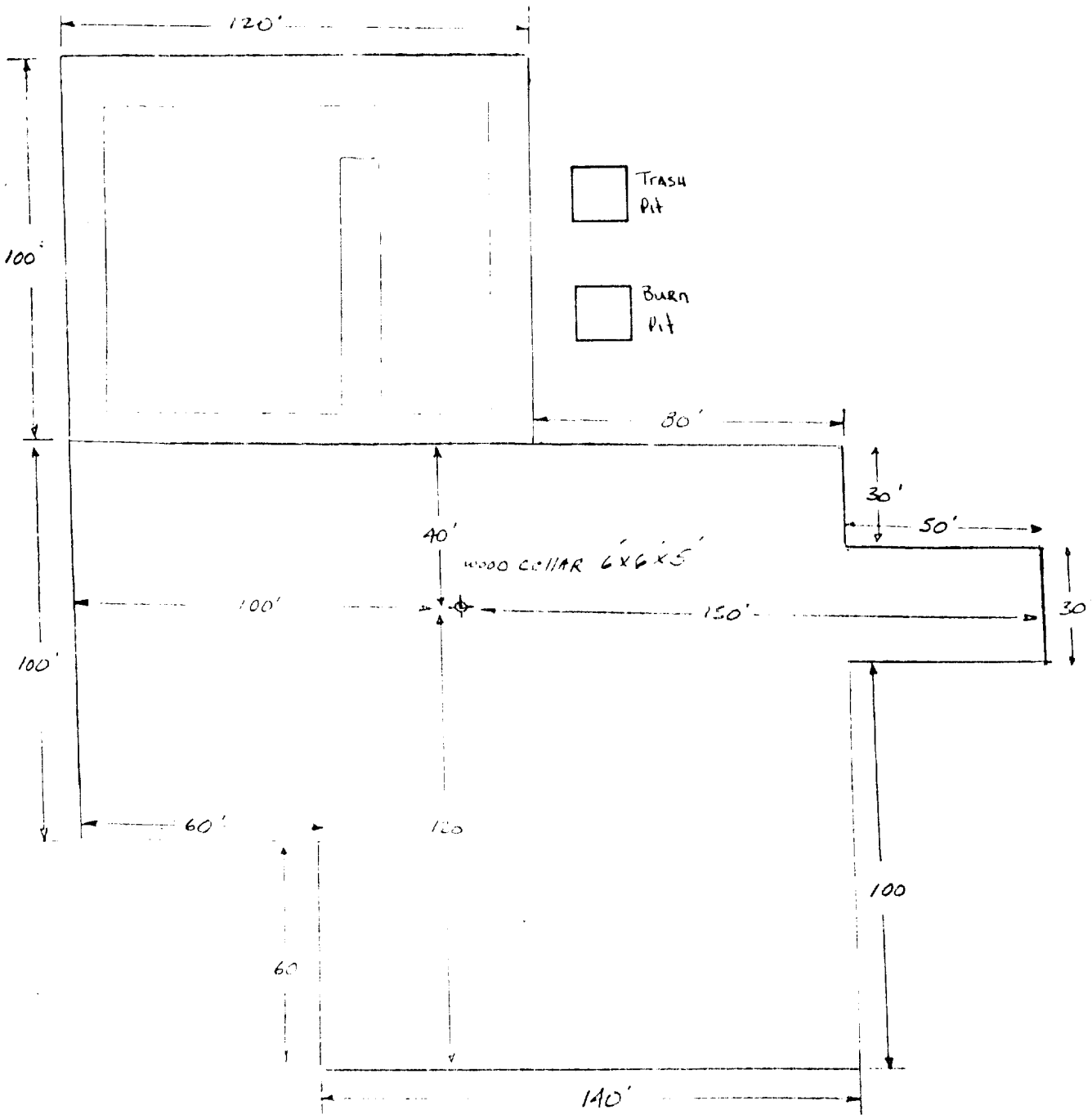
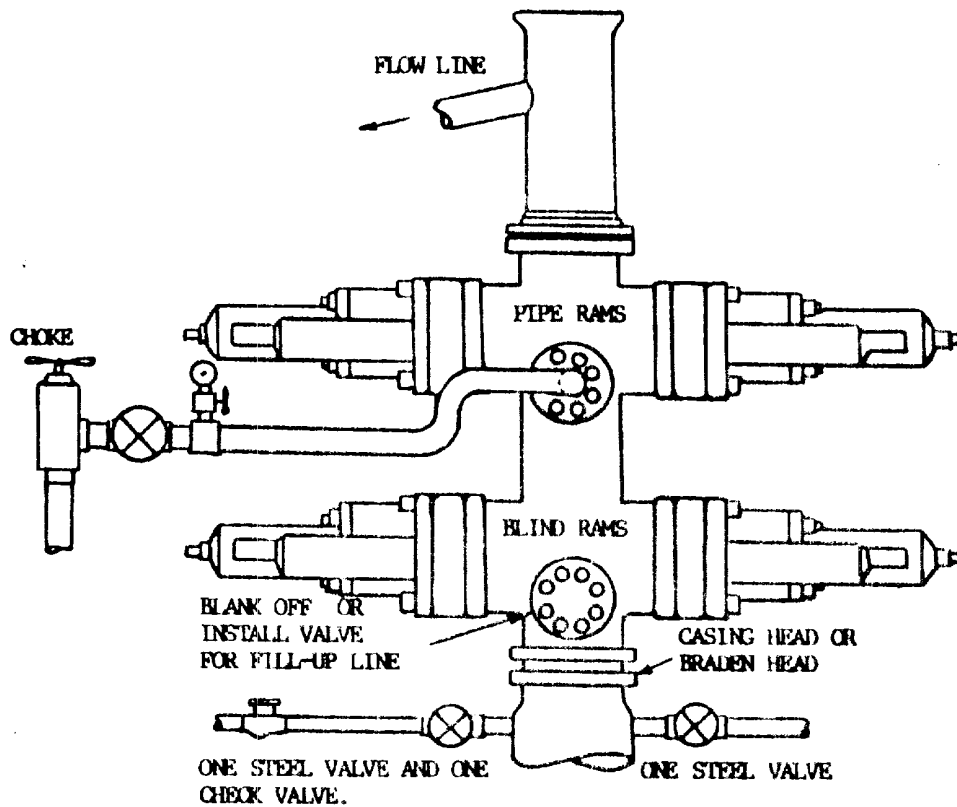


EXHIBIT "B"



THE FOLLOWING CONSTITUTE MINIMUM BLOWOUT PREVENTER REQUIREMENTS

- A. One double gate blowout preventer with lower rams blind and upper rams for pipe, all hydraulically controlled.
- B. Opening on preventers between rams to be flanged, studded or clamped and at least two inches diameter.
- C. All connections from operating manifold to preventers to be all steel hose or tube a minimum of one inch in diameter.
- D. The available closing pressure shall be at least 15% in excess of that required with sufficient volume to operate (close, open, and re-close) the preventers.
- E. All connections to and from preventers to have a pressure rating equivalent to that of the BOP's.
- F. Manual controls to be installed before drilling cement plug.
- G. Valve to control flow through drill pipe to be located on rig floor.
- H. Choke may be either positive or adjustable. Choke spool may be used between rams.