

DISTRICT I
P.O. Box 1880, Hobbs, NM 88241-1880

DISTRICT II
P.O. Drawer 80, Artesia, NM 88211-0719

DISTRICT III
1000 Rio Brazos Rd., Artesia, NM 87410

DISTRICT IV
P.O. Box 2088, Santa Fe, N.M. 87504-2088

State of New Mexico
Energy, Minerals and Natural Resources Department

Form C-102
Revised February 10, 1994
Submit to Appropriate District Office
State Lease - 4 Copies
Fee Lease - 3 Copies

Exhibit A
OIL CONSERVATION DIVISION
P.O. Box 2088
Santa Fe, New Mexico 87504-2088

AMENDED REPORT

WELL LOCATION AND ACREAGE DEDICATION PLAT

| | | |
|---------------|---------------------------------------|-------------------|
| API Number | Pool Code | Pool Name |
| Property Code | Property Name ELBOW CANYON 4 FED. | Well Number 1 |
| UGRID No. | Operator Name SNOW OIL & GAS, INC. | Elevation 3439 |

Surface Location

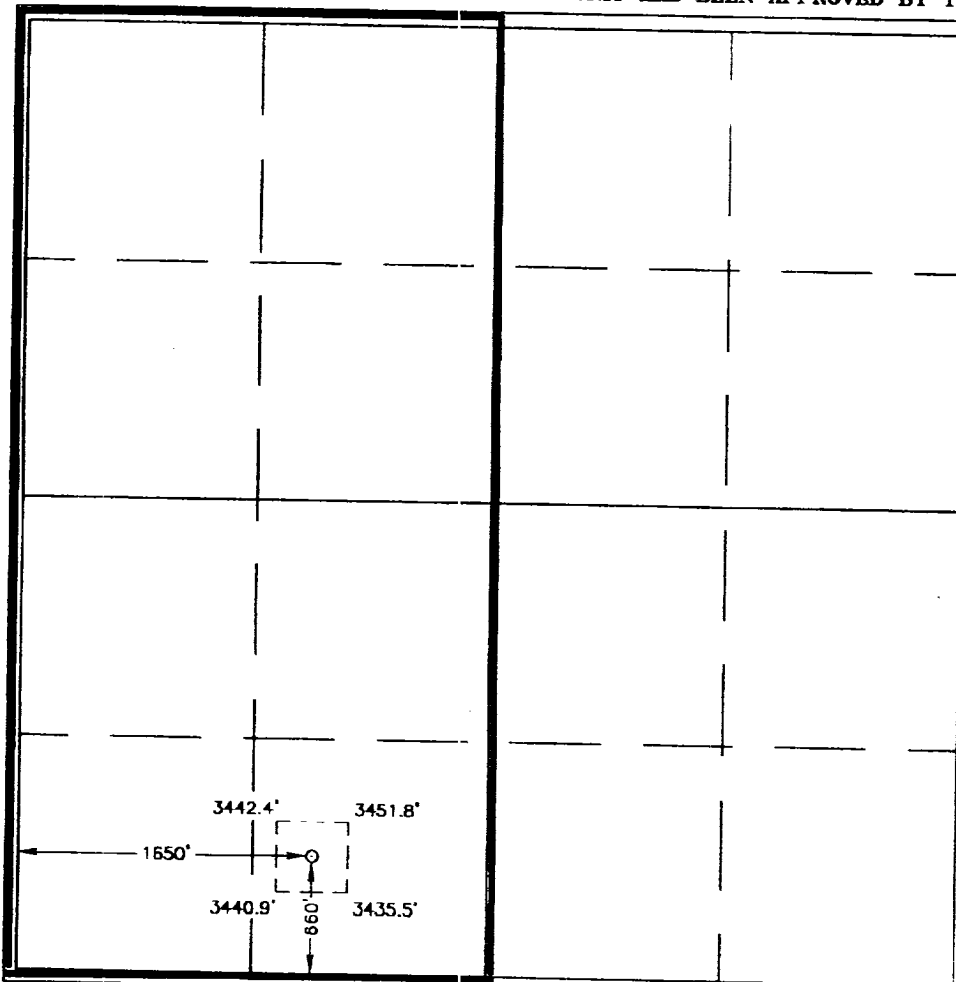
| UL or lot No. | Section | Township | Range | Lot Idn | Feet from the | North/South line | Feet from the | East/West line | County |
|---------------|---------|----------|-------|---------|---------------|------------------|---------------|----------------|--------|
| N | 4 | 24 S | 26 E | | 660 | SOUTH | 1650 | WEST | EDDY |

Bottom Hole Location If Different From Surface

| UL or lot No. | Section | Township | Range | Lot Idn | Feet from the | North/South line | Feet from the | East/West line | County |
|---------------|---------|----------|-------|---------|---------------|------------------|---------------|----------------|--------|
| | | | | | | | | | |

| | | | |
|------------------------|-----------------|--------------------|-----------|
| Dedicated Acres 520 | Joint or Infill | Consolidation Code | Order No. |
|------------------------|-----------------|--------------------|-----------|

NO ALLOWABLE WILL BE ASSIGNED TO THIS COMPLETION UNTIL ALL INTERESTS HAVE BEEN CONSOLIDATED OR A NON-STANDARD UNIT HAS BEEN APPROVED BY THE DIVISION



OPERATOR CERTIFICATION

I hereby certify that the information contained herein is true and complete to the best of my knowledge and belief.

Dan W. Snow
Signature
Dan W. Snow
Printed Name
Vice President
Title
6/6/00
Date

SURVEYOR CERTIFICATION

I hereby certify that the well location shown on this plat was plotted from field notes of actual surveys made by me or under my supervision, and that the same is true and correct to the best of my belief.

MAY 23, 2000
Date Surveyed LMP

Donald E. Kidson
Signature
Donald E. Kidson
Professional Surveyor
00-11-0658

Certificates No. DONALD E. KIDSON 3230
CARY JOHNSON 12041
MARTIN McDONALD 12186