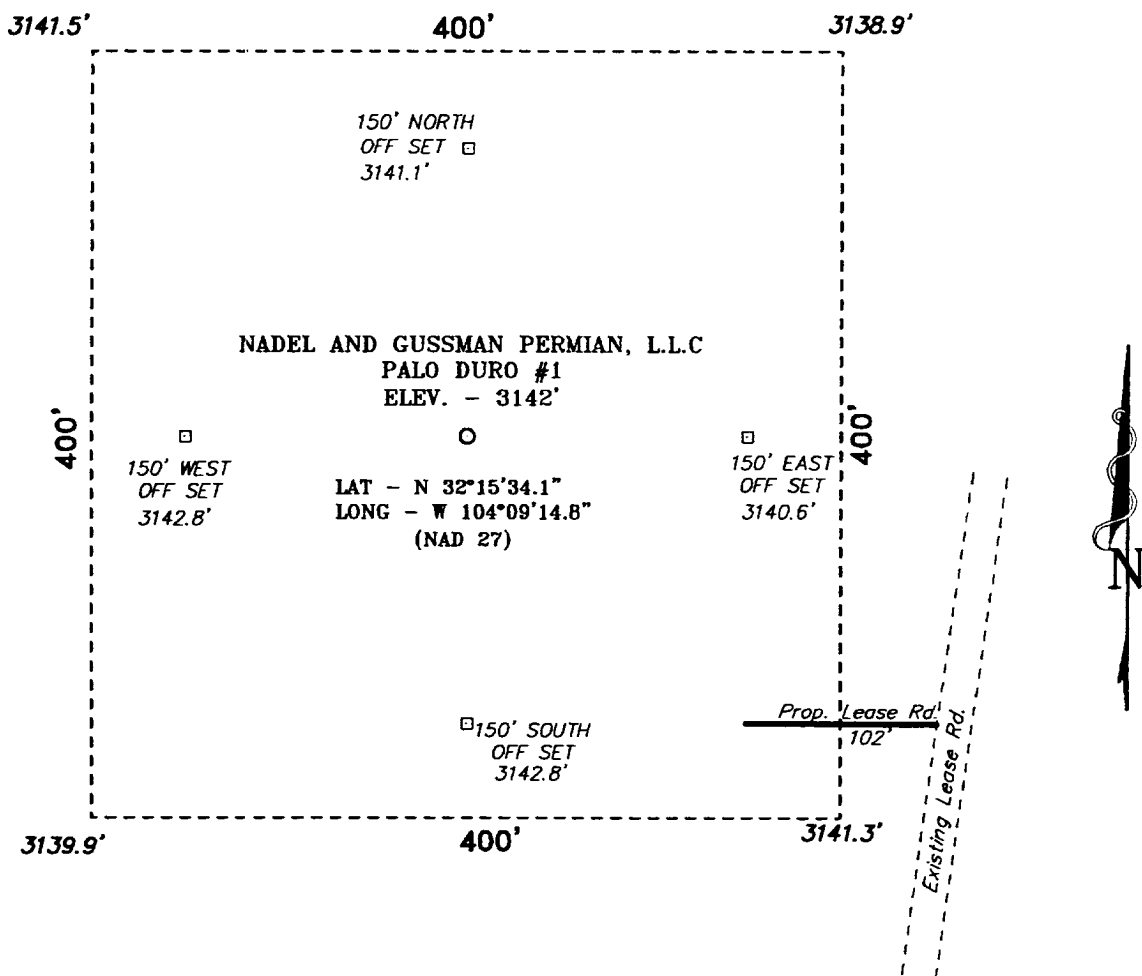
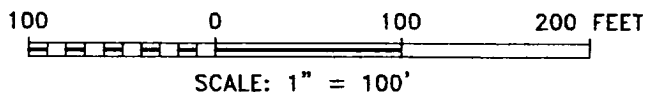


**SECTION 35, TOWNSHIP 23 SOUTH, RANGE 27 EAST, N.M.P.M.,
EDDY COUNTY, NEW MEXICO.**



DIRECTIONS TO WELL LOCATION

FROM THE JUNCTION OF US HWY 285 AND CO. RD. 716, GO SOUTH ON CO. RD. 716 FOR 0.4 MILE TO CO. RD. 763; THENCE WEST ON 763 FOR 3.0 MILES TO LEASE ROAD LEFT; THENCE SOUTH ON LEASE ROAD FOR 0.3 MILE TO PROPOSED LEASE ROAD.



NADEL AND GUSSMAN PERMIAN, L.L.C.

REF: PALO DURO No. 1 / Well Pad Topo

THE PALO DURO No. 1 LOCATED 1980' FROM THE SOUTH LINE AND 660' FROM THE EAST LINE OF SECTION 35, TOWNSHIP 23 SOUTH, RANGE 27 EAST, N.M.P.M., EDDY COUNTY, NEW MEXICO.

BASIN SURVEYS P.O. BOX 1786 - HOBBS, NEW MEXICO

W.O. Number: 2672 Drawn By: **K. GOAD**

Date: 08-08-2002 Disk: KJG #7 - 2672A DWG

Survey Date: 08-07-2002 Sheet 1 of 1 Sheets