

WATER CONSERVATION DIVISION

P. O. BOX 2088

SANTA FE, NEW MEXICO 87501

Form C-102  
Revised 10-1-78

STATE OF NEW MEXICO  
OIL AND MINERALS DEPARTMENT

All distances must be from the outer boundaries of the Section.

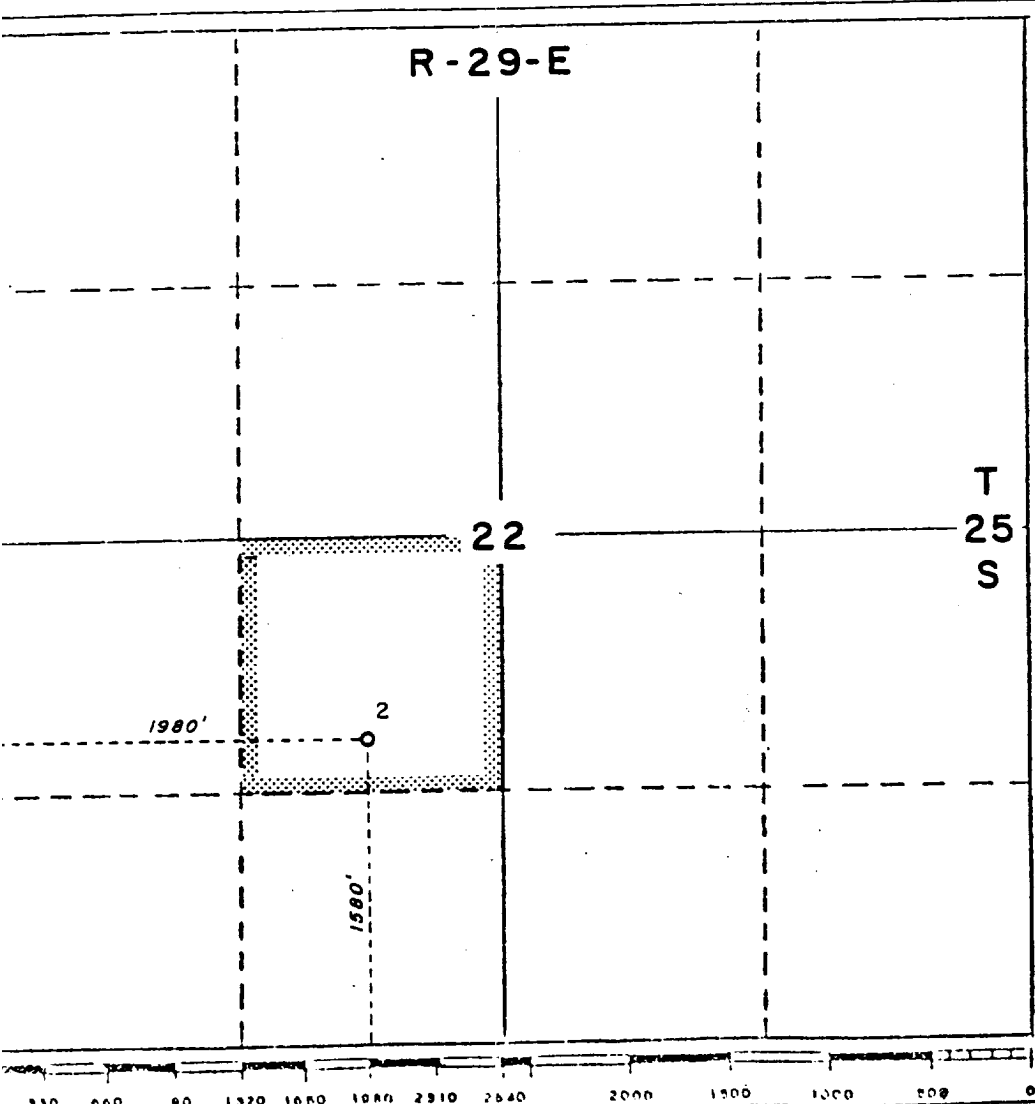
Lessor MOBIL PRODUCING TX. & N.M. INC.		Lease Section 22 Federal			Well No. 2
Section Letter K	Section 22	Township 25S	Range 29E	County Eddy	
Actual Footage Location of Well:					
1580	feet from the	South	line and	1980	feet from the West line
Surface Level Elev. 3062	Producing Formation Delaware Bell Canyon		Pool Wildcat	Dedicated Acreage: 40 Acres	

- Outline the acreage dedicated to the subject well by colored pencil or hachure marks on the plat below.
- If more than one lease is dedicated to the well, outline each and identify the ownership thereof (both as to working interest and royalty).
- If more than one lease of different ownership is dedicated to the well, have the interests of all owners been consolidated by communitization, unitization, forced pooling, etc?  
 Yes  No If answer is "yes," type of consolidation \_\_\_\_\_

RECEIVED BY  
 FEB 05 1986  
 O. C. D.  
 ARTESIA, OFFICE

If answer is "no," list the owners and tract descriptions which have actually been consolidated. (Use reverse side of this form if necessary.) \_\_\_\_\_

No allowable will be assigned to the well until all interests have been consolidated (by communitization, unitization, forced pooling, or otherwise) or until a non-standard unit, eliminating such interests, has been approved by the Division.



<b>CERTIFICATION</b>	
I hereby certify that the information contained herein is true and complete to the best of my knowledge and belief.	
<i>C. C. Smith - jaw</i>	
Name	G. E. Tate
Position	Env. & Reg. Mgr.
Company	Mobil Producing TX & NM Inc.
Date	1-17-86
I hereby certify that the well location shown on this plat was plotted from field notes of actual surveys made by me or under my supervision, and that the same is true and correct to the best of my knowledge and belief.	
Date Surveyed	
Registered Professional Engineer and/or Land Surveyor	
Certificate No.	

