

Form 3160-3
(November 1983)

APR 25 1985

O. C. D.

NM OIL CONS. COMMISSION
SUBMIT IN 1 LIGATE*
Drawer DD
(Other instructions on reverse side)

UNITED STATES, NM 88210
DEPARTMENT OF THE INTERIOR
BUREAU OF LAND MANAGEMENT

Form approved.
Budget Bureau No. 1004-0136
Expires August 31, 1985

30-115-25273

APPLICATION FOR PERMIT TO DRILL, DEEPEN, OR PLUG BACK

1a. TYPE OF WORK

DRILL

DEEPEN

PLUG BACK

b. TYPE OF WELL

OIL WELL

GAS WELL

OTHER

SINGLE ZONE

MULTIPLE ZONE

2. NAME OF OPERATOR

BLANCO ENGINEERING, INC.

3. ADDRESS OF OPERATOR

116 NORTH FIRST, ARTESIA, N.M. 88210

4. LOCATION OF WELL (Report location clearly and in accordance with any State requirements.)*

At surface

660' FWL - 2055' FSL

At proposed prod. zone
SAME

14. DISTANCE IN MILES AND DIRECTION FROM NEAREST TOWN OR POST OFFICE*

Approximately 12 miles South & 7 miles East of Malaga, N.M.

10. DISTANCE FROM PROPOSED*

LOCATION TO NEAREST PROPERTY OR LEASE LINE, FT.
(Also to nearest drlg. unit line, if any)

660'

16. NO. OF ACRES IN LEASE

280

17. NO. OF ACRES ASSIGNED TO THIS WELL

40

18. DISTANCE FROM PROPOSED LOCATION* TO NEAREST WELL, DRILLING, COMPLETED, OR APPLIED FOR, ON THIS LEASE, FT.

None

19. PROPOSED DEPTH

6300'

20. ROTARY OR CABLE TOOLS

Rotary

21. ELEVATIONS (Show whether DF, RT, GR, etc.)

3044 GR

22. APPROX. DATE WORK WILL START*

23. PROPOSED CASING AND CEMENTING PROGRAM

SIZE OF HOLE	SIZE OF CASING	WEIGHT PER FOOT	SETTING DEPTH	QUANTITY OF CEMENT
17 1/2	13 3/8	68#	350	370 sx Class C (Circulate)
12 1/4	8 5/8	24# & 32#	3100	1075 sx Howco Lite, 200 sx Neat
7 7/8	5 1/2	17#	6300	580 sx 50/50 Poz w/stage collar - Tie cement back to 8 5/8" Intermediate

Mud Program: See Exhibit "G"

BOP Program: See Exhibit "E"

Gas Not Dedicated

Cement Program: Also See Exhibit F

13 3/8" - 370 sx. Class "C" Howco with additive's of 2% Cacl to circulate w/100% Excess

8 5/8" - 1075 sx. Howco Lite w/6# salt and 1/4# Flocele per sack, followed by 200 sx Class C w/2% Cacl

5 1/2" - 1st STG - 150 sx 50/50 Poz "C" w/6# salt and 1/4# Flocele/sack
2nd STG - 430 sx 50/50 Poz "C" with 6# salt and 1/4# Flocele/sack
STG Collar at 5300'

IN ABOVE SPACE DESCRIBE PROPOSED PROGRAM: If proposal is to deepen or plug back, give data on present productive zone and proposed new productive zone. If proposal is to drill or deepen directionally, give pertinent data on subsurface locations and measured and true vertical depths. Give blowout preventer program, if any.

24.

SIGNED

Paul White

TITLE

President

DATE 4/19/85

(This space for Federal or State office use)

PERMIT NO.

APPROVAL DATE

APPROVED BY

Mark Hollis

TITLE

DATE 4-24-85

CONDITIONS OF APPROVAL, IF ANY:

APPROVAL SUBJECT TO GENERAL REQUIREMENTS AND SPECIAL STIPULATIONS

*See Instructions On Reverse Side

Title 18 U.S.C. Section 1001, makes it a crime for any person knowingly and willfully to make to any department or agency of the United States any false, fictitious or fraudulent statements or representations as to any matter within its jurisdiction.

9/54

Posted IOI
API & HL
5-3-85

NEW MEXICO OIL CONSERVATION COMMISSION
WELL LOCATION AND ACREAGE DEDICATION PLAT

Form C-102
Supersedes C-128
Effective 1-1-65

All distances must be from the outer boundaries of the Section.

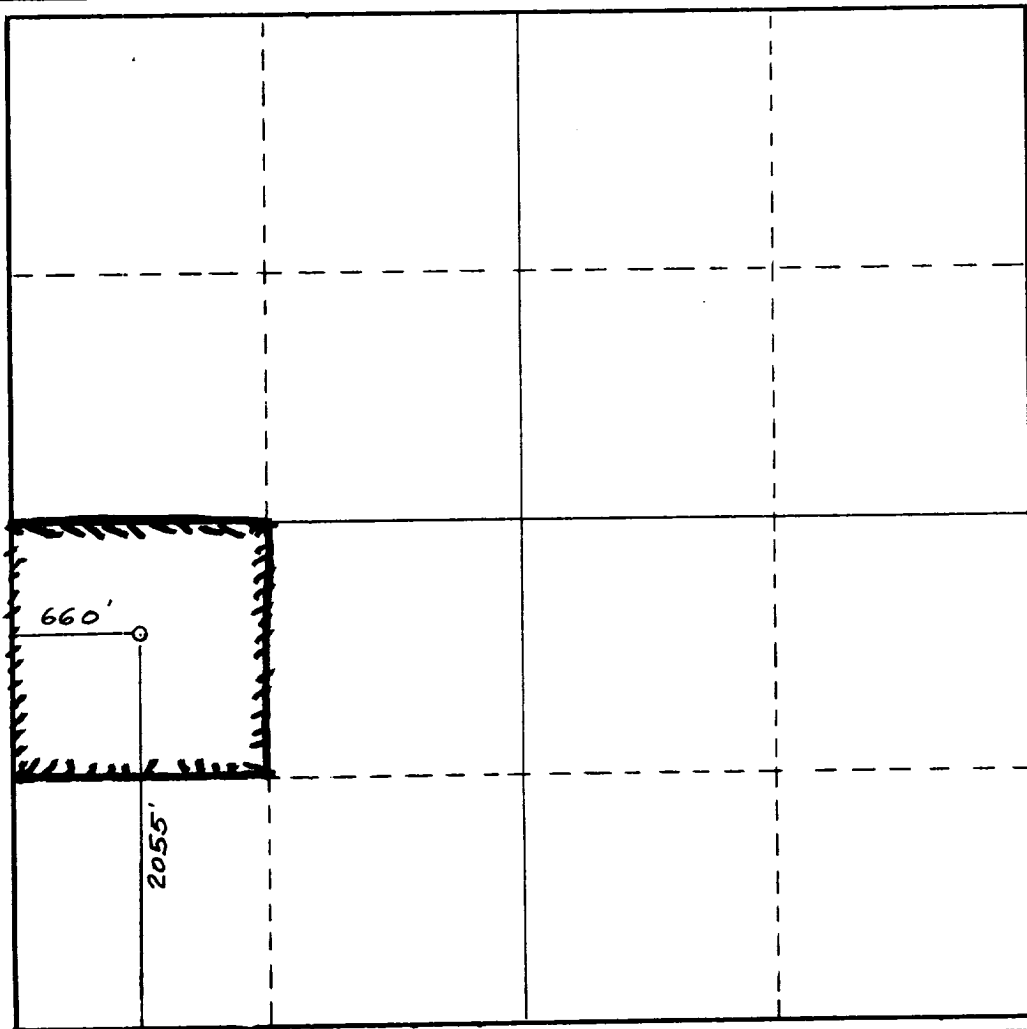
Operator BLANCO ENGINEERING INC.		Lease Bedena Federal			Well No. 1
Unit Letter L	Section 18	Township 26 South	Range 30 East	County Eddy	
Actual Footage Location of Well: 2055 feet from the South line and 660 feet from the West line					
Ground Level Elev. 3044.	Producing Formation Delaware Cherry Canyon		Pool East Brushy Draw Delaware	Dedicated Acreage: 40 Acres	

1. Outline the acreage dedicated to the subject well by colored pencil or hachure marks on the plat below.
2. If more than one lease is dedicated to the well, outline each and identify the ownership thereof (both as to working interest and royalty).
3. If more than one lease of different ownership is dedicated to the well, have the interests of all owners been consolidated by communitization, unitization, force-pooling, etc?

Yes No If answer is "yes," type of consolidation _____

If answer is "no," list the owners and tract descriptions which have actually been consolidated. (Use reverse side of this form if necessary.) _____

No allowable will be assigned to the well until all interests have been consolidated (by communitization, unitization, forced-pooling, or otherwise) or until a non-standard unit, eliminating such interests, has been approved by the Commission.



CERTIFICATION

I hereby certify that the information contained herein is true and complete to the best of my knowledge and belief.

Paul G. White
Name

Paul G. White
Position

President
Company

BLANCO ENGINEERING, INC.
Date

4/19/85

I hereby certify that the well location shown on this plat was plotted from field notes of a 5412 surveys made by me or under my supervision, and that the same is true and correct to the best of my knowledge and belief.

Date Surveyed
April 10, 1985

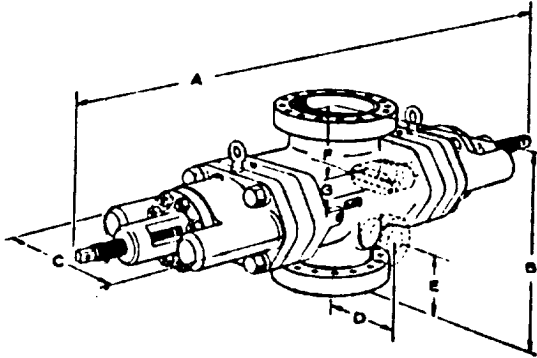
Registered Professional Engineer and/or Land Surveyor

Dan R. Reddy
Certificate No.

NM PE&LS NO. 5412



U BLOWOUT PREVENTER ENGINEERING DATA



Single Open Face Flanged U Blowout Preventer

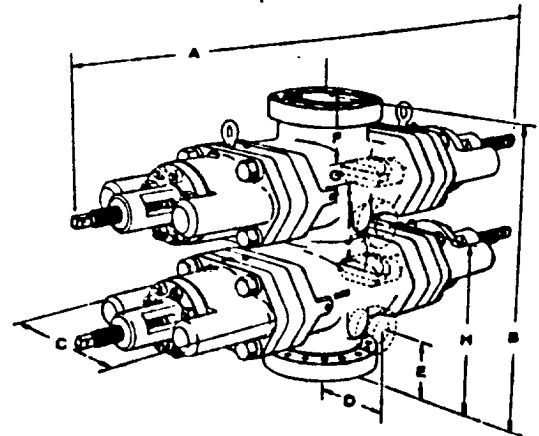
Side Outlets to 4" size (7-1/16" on 26-3/4" preventers) can be provided beneath each set of rams, on either or both sides of U preventers. Side outlet flanges are open face and have the same pressure rating as the vertical run flanges. Valve removal preparations can be provided. To obtain a quotation, the number and size of outlets should be specified.

Flanges conform to API Standard 6A. Type 6BX flanges are standard for 10,000 psi, 15,000 psi, and 20,000 psi working pressures and for 5000 psi working pressures for 13-5/8" and larger bore preventers.

Although most preventers have open face flanges or Cameron clamp hubs, preventers with studded flanges can be furnished.

Sizes and Dimensions are in inches. The over-all length "A" given in the tables does not include the optional wedgelocks. No spacers between rams are included in the table of dimensions of double ram models. Preventers with spacers to clear tool joints can be obtained on special order. For information on preventers with spacers, or sizes not listed, consult your Cameron representative.

Hydraulic Control Connections to operate rams and bannets are 1" NPT. There are two connections for each set of rams. Hydraulic ram lock connections are 1/2" NPT.



Double Open Face Flanged U Blowout Preventer

Engineering Data Designations. See Charts on Following Page

- A-1 Over-all length, bonnets closed, locking screws locked
- A-2 Over-all length, ram change, bonnets opened, locking screws unlocked
- B-1 Over-all height flanged
- B-2 As above, with Cameron clamp hubs
- C Over-all width without side outlets (max. width)
- D Centerline of preventer to outlet flange or hub face. Distance is variable.
- E-1 Centerline of side outlet (outlet below lower rams in double model) to bottom flange face
- E-2 As above, to bottom hub face
- F-1 Top of upper ram to top flange face
- F-2 As above, to top hub face
- G Ram height
- H-1 Centerline of side outlet between rams to bottom flange face
- H-2 As above, to bottom hub face
- J Top of lower ram to bottom of upper ram

EXHIBIT E
BLANCO ENGINEERING, INC.
Bedena Federal No. 1
660' FWL - 2055' FSL
Section 18-T26S-R30E
Eddy County, New Mex.

APPLICATION FOR DRILLING

Blanco Engineering, Inc.
Bedena Federal No. 1
660' FWL - 2055' FSL
Section 18-T26S-R30E
Eddy County, N.M.

In conjunction with Form 9-331C, Application for Permit to Drill Subject well, Blanco Engineering, Inc., submits the following ten items of pertinent information in accordance with USGS requirements:

1. The geologic surface formation is Permian.
2. The estimated tops of geologic markers are as follows:

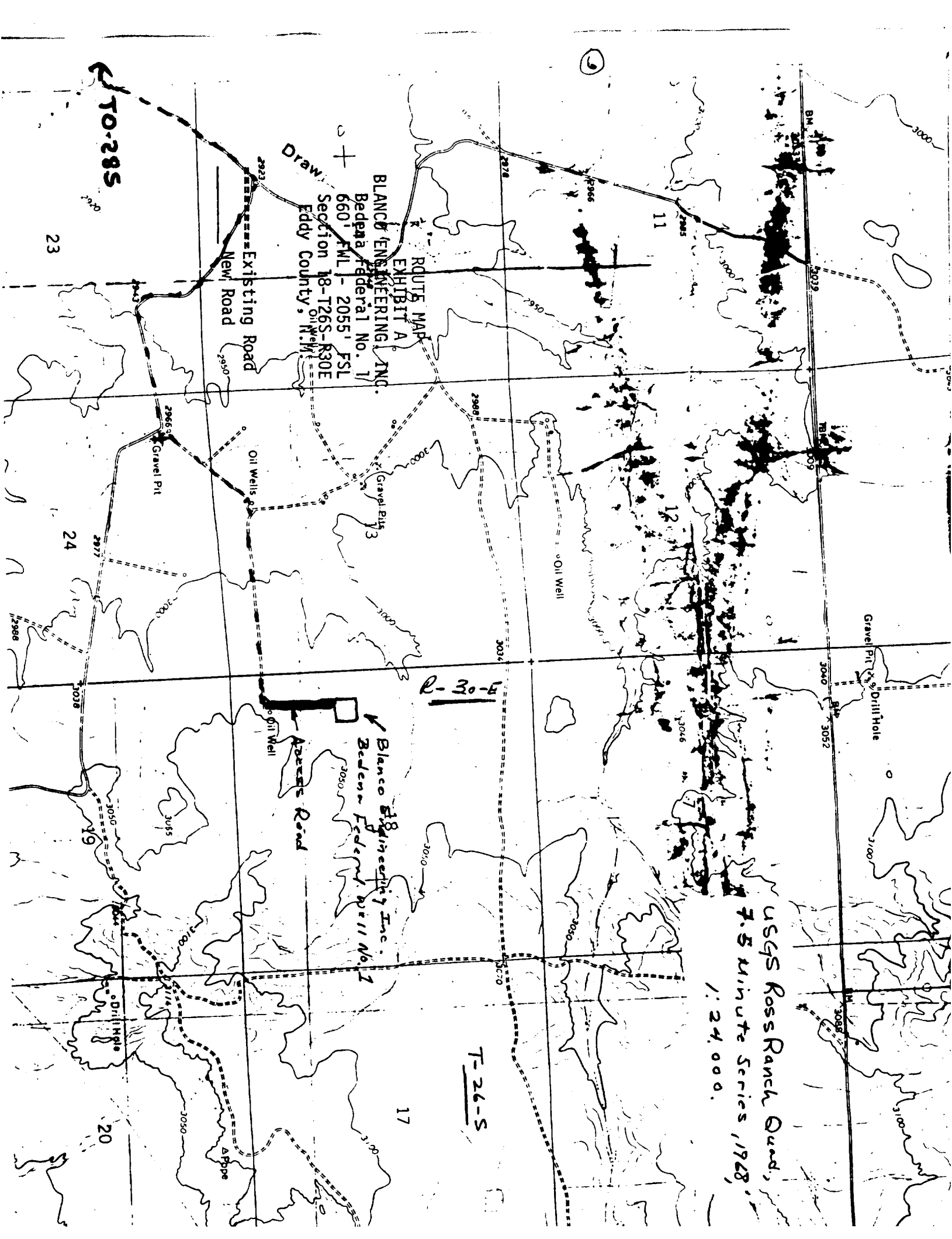
Anhydrte	850'
Delaware Lime	3310'
Delaware Sand	3370'
Cherry Canyon	4150'
Brushy Canyon	5750'
3. The estimated depths at which anticipated water, oil or gas formations are expected to be encountered:

Water:	Possible to 250'
Oil or gas:	Delaware Sand 3370'
	Cherry Canyon 4150'
	Brushy Canyon 5750'
4. Proposed Casing Program: See Form 9-331C and Exhibit F.
5. Pressure Control Equipment: See Form 9-331C and Exhibit E.
6. Mud Program: See Exhibit G.
7. No Coring or DST's Anticipated

Logging:

Compensated Newtron	6300' to Surface
DIFL	6300' to 3100'
Minnie-log	6300' to 3100'
Gamma Ray	6300' to Surface

8. No abnormal pressures or temperatures are anticipated.
9. Anticipated starting date: As soon as possible.



← T-28-S

BLANCO ENGINEERING, INC.
EXHIBIT A
Bedena Federal No. 1
660' FNL - 2055' FSL
Section 18-T26S-R30E
Eddy County, N.M.

R-30-F

Blanco Engineering Inc.
Bedena Federal Well No. 1

T-26-S

USGS Ross Ranch Quad,
7.5 Minute Series, 1928,
1:24,000.

23

24

11

12

13

17

19

20

Existing Road
New Road

Oil Wells

Gravel Pit

Gravel Pits

Apples Road

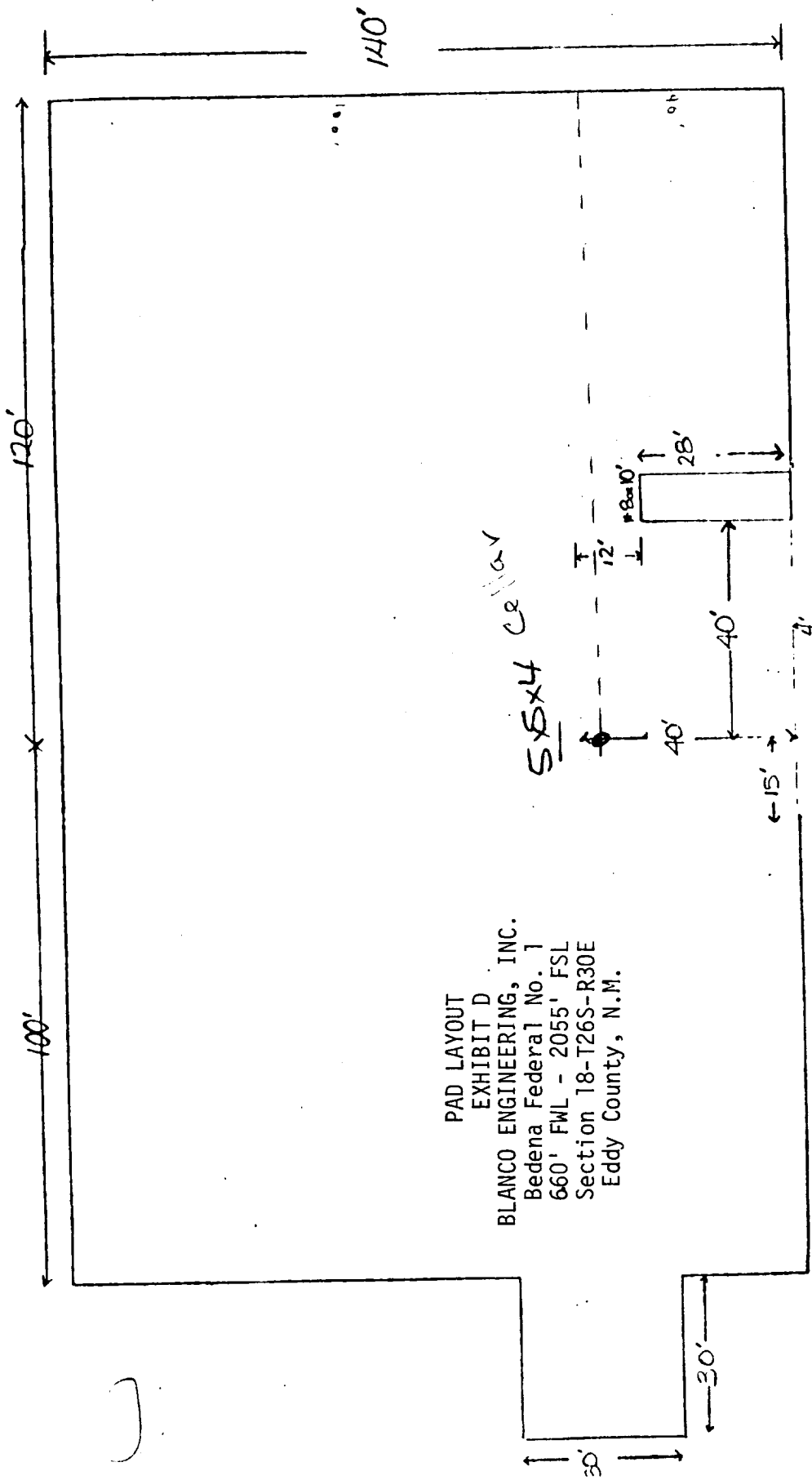
Gravel Pit & Drill Hole

Drill Hole

Apppe

Drill Hole

Drill Hole



PAD LAYOUT
 EXHIBIT D
 BLANCO ENGINEERING, INC.
 Bedena Federal No. 1
 660' FWL - 2055' FSL
 Section 18-T26S-R30E
 Eddy County, N.M.

LARUE DRILLING Co.

RIG #1

&

L&M DRILLING, INC.

RIG #1