

UNITED STATES DEPARTMENT OF THE INTERIOR
NEW MEXICO OIL CONS. COMMISSION
Division DD

GEOLOGICAL SURVEY Artesia, NM 88210

5. LEASE DESIGNATION AND SERIAL NO.

NM-31098

APPLICATION FOR PERMIT TO DRILL, DEEPEN, OR PLUG BACK

6. IF INDIAN, ALLOTTEE OR TRIBE NAME

7. UNIT AGREEMENT NAME

8. FARM OR LEASE NAME

LEILA FEDERAL

9. WELL NO.

3

10. FIELD AND POOL, OR WILDCAT

UNDESIGNATED ABO

11. SEC., T., R., M., OR BLM. AND SURVEY OR AREA

SEC 24, T6S, R26E

12. COUNTY OR PARISH 13. STATE

CHAVES NEW MEXICO

1a. TYPE OF WORK

DRILL DEEPEN PLUG BACK

b. TYPE OF WELL

OIL WELL GAS WELL OTHER SINGLE ZONE MULTIPLE ZONE

2. NAME OF OPERATOR

MESA PETROLEUM CO.

3. ADDRESS OF OPERATOR

1000 VAUGHN BUILDING/MIDLAND, TEXAS 79701-4493

4. LOCATION OF WELL (Report location clearly and in accordance with any State requirements.)*

At surface 1980' FNL & 1980' FEL SW $\frac{1}{2}$ NE $\frac{1}{2}$ G

At proposed prod. zone SAME

14. DISTANCE IN MILES AND DIRECTION FROM NEAREST TOWN OR POST OFFICE*

32 miles Northeast of Roswell, New Mexico

15. DISTANCE FROM PROPOSED* LOCATION TO NEAREST PROPERTY OR LEASE LINE, FT. (Also to nearest drig. unit line, if any)

660' / 660'

16. NO. OF ACRES IN LEASE

1160

17. NO. OF ACRES ASSIGNED TO THIS WELL

160

18. DISTANCE FROM PROPOSED LOCATION* TO NEAREST WELL, DRILLING, COMPLETED, OR APPLIED FOR, ON THIS LEASE, FT.

1320'

19. PROPOSED DEPTH

4700'

20. ROTARY OR CABLE TOOLS

ROTARY

21. ELEVATIONS (Show whether DF, RT, GR, etc.)

3829' GR

22. APPROX. DATE WORK WILL START*

AUGUST 15, 1982

23. PROPOSED CASING AND CEMENTING PROGRAM

SIZE OF HOLE	SIZE OF CASING	WEIGHT PER FOOT	SETTING DEPTH	QUANTITY OF CEMENT
14 3/4"	10 3/4"	40.5#	950'	700/300 SURFACE
9 1/2"	7 5/8"	26.4#	1600'	700/300 TIE BACK
6 1/2" or 7 7/8"	4 1/2"	10.5#	4700'	300 COVER ABO

RECEIVED
AUG 24 1982

O. C. D.
ARTESIA, OFFICE

Propose to drill 14 3/4" hole with mud or air to approximately 950' and run 10 3/4" casing. Will cement to surface and test casing with cementing head to 600 psi. Will reduce hole to 9 1/2" and drill on mud or air to approximately 1600' and run 7 5/8" casing if circulation has been lost and cement with sufficient amounts to tie-back to 10 3/4" casing. Will then reduce hole to 6 1/2" or 6 1/4", test BOP's and casing and drill to total depth. If hole conditions are favorable, the 7 5/8" casing will be omitted and the hole will be reduced to 7 7/8" and drilled to total depth. Either 4 1/2" or 5 1/2" casing will be run as production casing depending upon hole size drilled to TD.

Operator's gas sales are dedicated.

FOOTED W/D 1
ND Book + APD Book
8-26-82

XC: MMS (7), TLS, CEN RCDS, ACCTG, MEC, LAND, ROSWELL, REM, FILE, (PARTNERS)

IN ABOVE SPACE DESCRIBE PROPOSED PROGRAM: If proposal is to deepen or plug back, give data on present productive zone and proposed new productive zone. If proposal is to drill or deepen directionally, give pertinent data on subsurface locations and measured and true vertical depths. Give blowout preventer program, if any.

24. SIGNED R. E. Mathis TITLE REGULATORY COORDINATOR DATE 7-28-82

(This space for Federal or State office use)

PERMIT NO.

(Orig. Sgd.) GEORGE H. STEWART

APPROVAL DATE

AUG 25 1982

APPROVED BY

CONDITIONS OF APPROVAL, IF ANY:

JAMES A. GILLHAM
DISTRICT SUPERVISOR

TITLE

RECEIVED
DATE
JUL 29 1982

OIL & GAS
U.S. GEOLOGICAL SURVEY
EL PASO, TEXAS

All distances must be from the outer boundaries of the Section

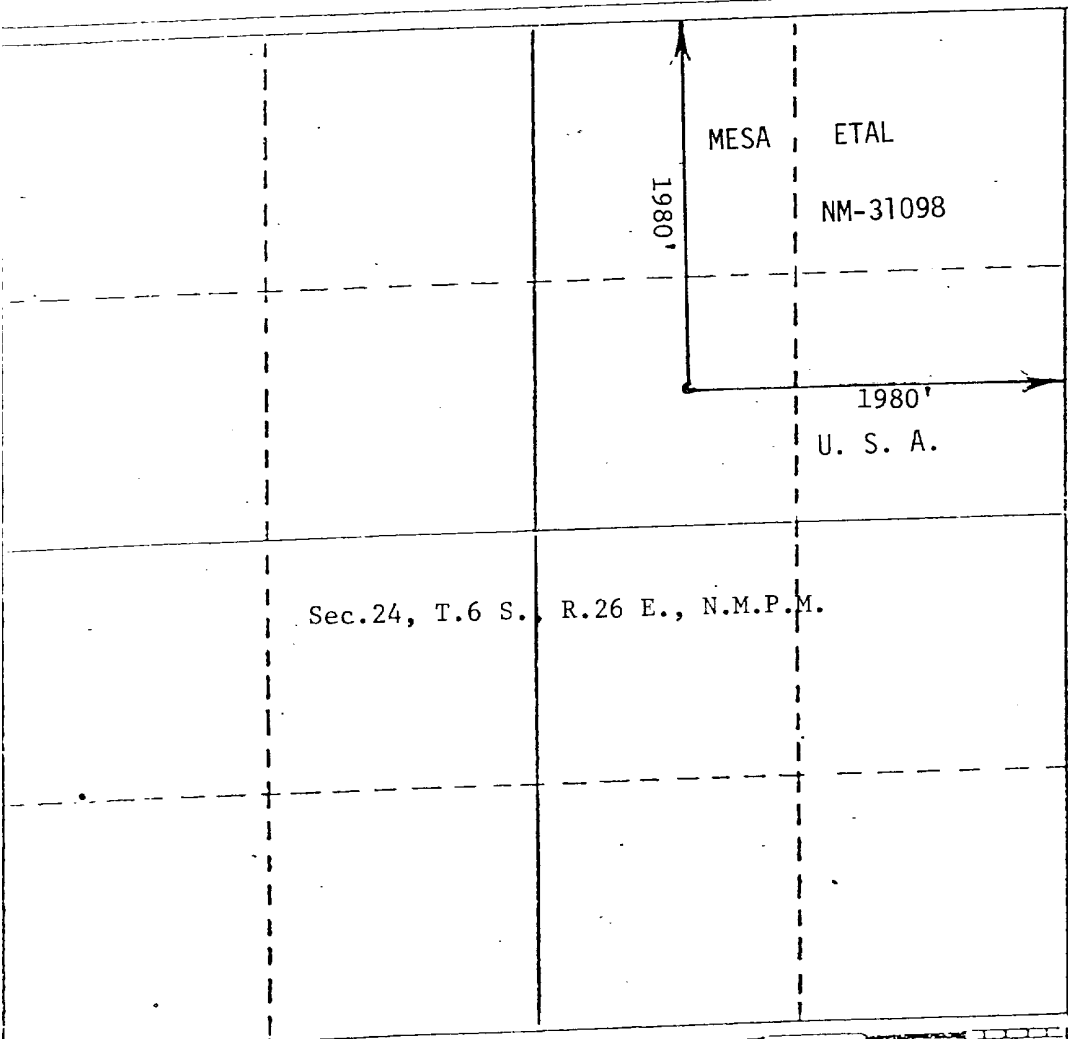
Operator Mesa Petroleum Co.		Lease Leila Federal		Well No. #3
Well Letter G	Section 24	Township 6 South	Range 26 East	County Chaves
Closest Postage Location of Well: 1980 feet from the North line and 1980 feet from the East line		Dedicated Acreage: NE/4 160 Acres		
Ground Level Elev. 3829	Producing Formation ABO	Pool UNDESIGNATED <i>file</i>		

1. Outline the acreage dedicated to the subject well by colored pencil or hachure marks on the plat below.
2. If more than one lease is dedicated to the well, outline each and identify the ownership thereof (both as to working interest and royalty).
3. If more than one lease of different ownership is dedicated to the well, have the interests of all owners been consolidated by communitization, unitization, force-pooling, etc?

Yes No If answer is "yes," type of consolidation _____

If answer is "no," list the owners and tract descriptions which have actually been consolidated. (Use reverse side of this form if necessary.) _____

No allowable will be assigned to the well until all interests have been consolidated (by communitization, unitization, forced-pooling, or otherwise) or until a non-standard unit, eliminating such interests, has been approved by the Division.



CERTIFICATION

I hereby certify that the information contained herein is true and complete to the best of my knowledge and belief.

R. E. Mathis

Name
R. E. MATHIS

Position
REGULATORY COORDINATOR

Company
MESA PETROLEUM CO.

Date
JULY 28, 1982

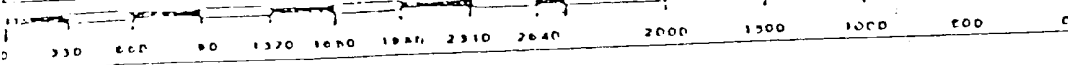
I hereby certify that the well location shown on this plat was plotted from field notes of actual surveys made by me or under my supervision, and that the same is true and correct to the best of my knowledge and belief.

Date Surveyed
NEW MEX July 13, 1982

Registered Professional Engineer and/or Land Surveyor
6290

JOHN D. JAQUES
REGISTERED PROFESSIONAL ENGINEER & LAND SURVEYOR

Certificate No.
6290



APPLICATION FOR PERMIT TO DRILL

MESA PETROLEUM CO.
LEILA FEDERAL #3
1980' FNL & 1980' FEL, SEC 24, T6S, R26E
CHAVES COUNTY, NEW MEXICO

LEASE NO. NM-31098

In conjunction with Form 9331-C, Application For Permit to Drill subject well, the following additional information is provided:

1. Applicable portions of the GENERAL REQUIREMENTS FOR OIL AND GAS OPERATIONS ON FEDERAL LEASES, Roswell District, Geological Survey of September 1, 1980 will be adhered to.
2. Geological markers are estimated as follows:

SEVEN RIVERS	Surface
SAN ANDRES	928
GLORIETA	1895
TUBB	3376
ABO	4001
3. Hydrocarbon bearing strata may occur in the Abo formation(s). No fresh water is expected to be encountered below 950'.
4. The Casing and Blowout Preventer Program will be determined by hole conditions as encountered. See Exhibit VI. Anticipate drilling with mud, air or foam using ram type preventer and rotating head for well control. The 10 3/4" casing will be set at approximately 950' to protect any fresh water zones and cemented to the surface. The 7 5/8" casing will be set at approximately 1600' if water zones have been encountered or omitted if not and ram type preventers installed. Sufficient amounts and kinds of cement would be used to ensure any water, gas, or oil zones encountered are isolated and shut off down to the casing point if run. The 4 1/2" production casing will be set at total depth or shallower depending upon the depth of the deepest commercial hydrocarbon bearing strata encountered.
5. No drill stem test or coring program is planned. The logging program may consist of a GR-CNL from surface total depth and FDC from casing point to total depth.
6. Anticipated drilling time is ten days with completion operations to follow as soon as a completion unit is available.

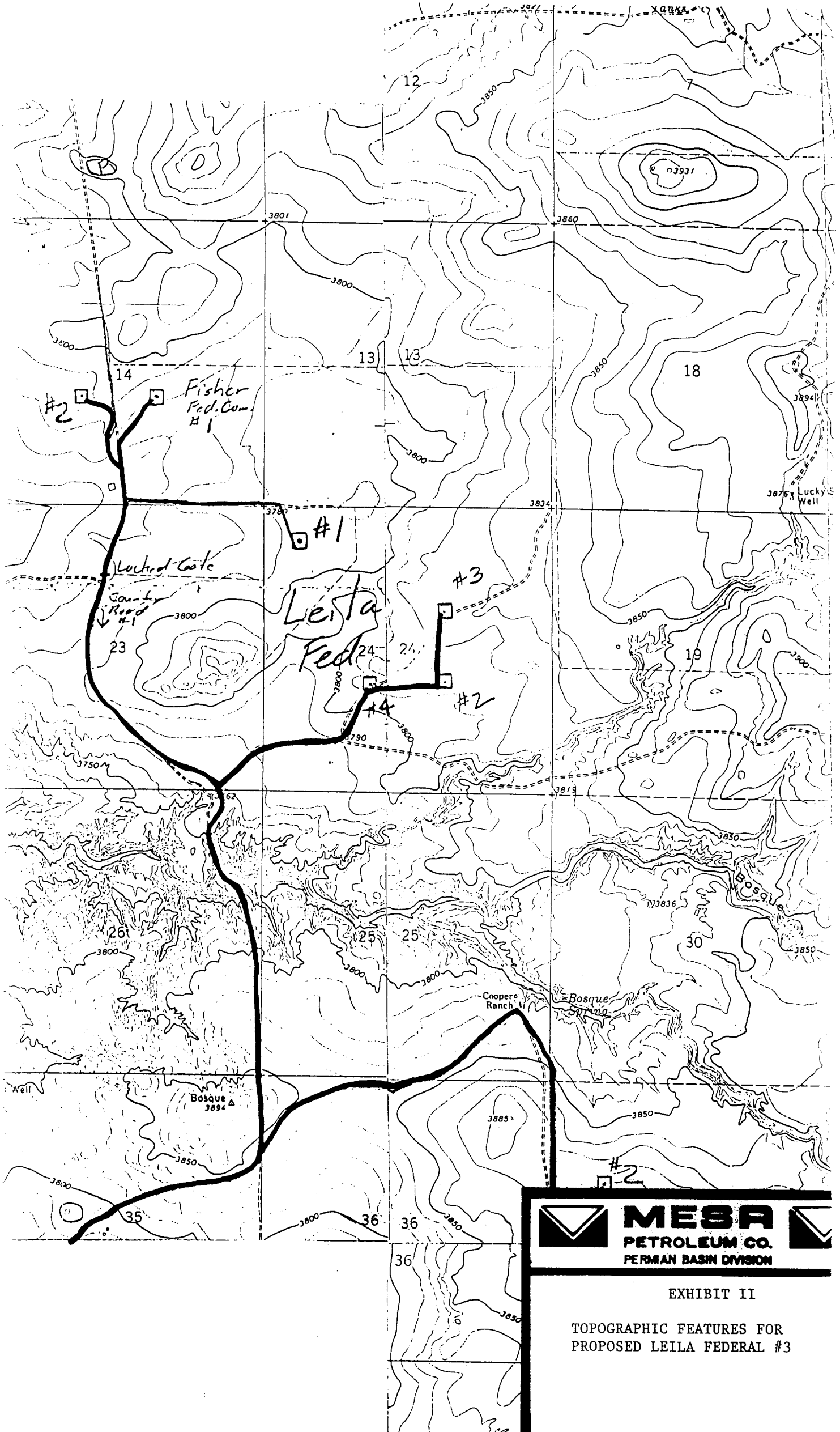
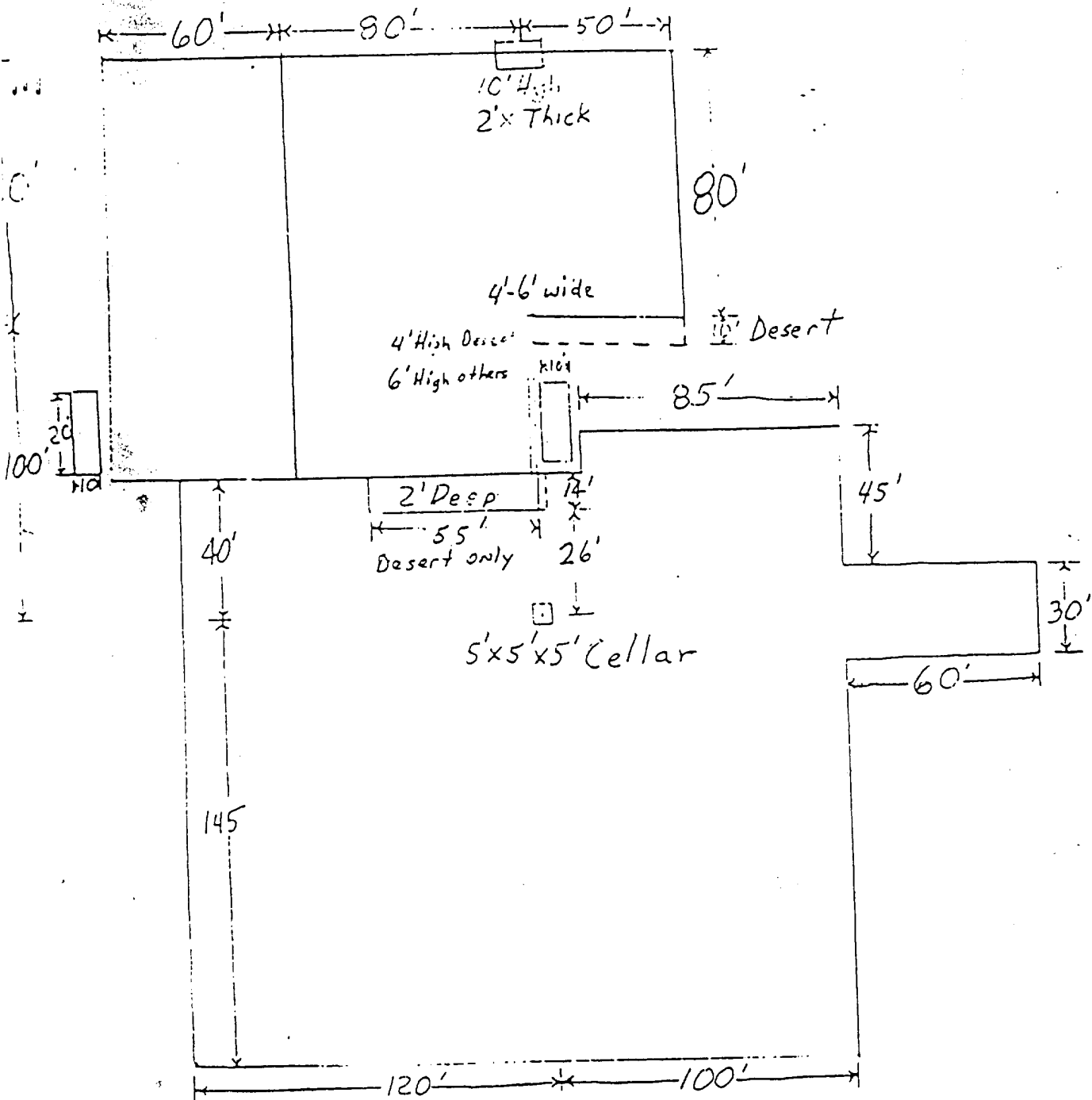


EXHIBIT II

TOPOGRAPHIC FEATURES FOR
PROPOSED LEILA FEDERAL #3

DATE: _____

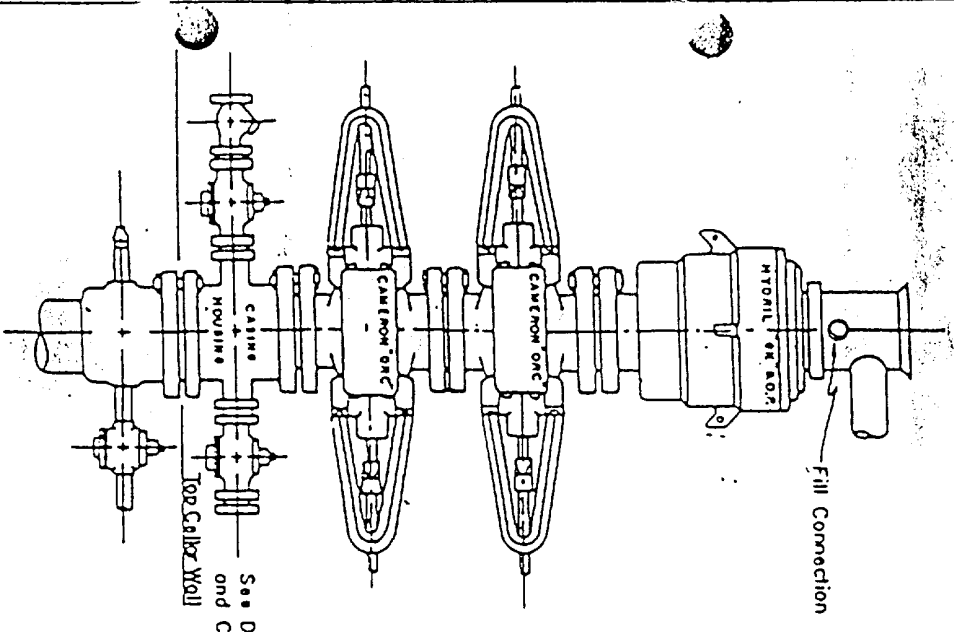
SCALE: _____



6"-8" Watered & Compacted Caliche
ON PAD & ROAD IF NEEDED

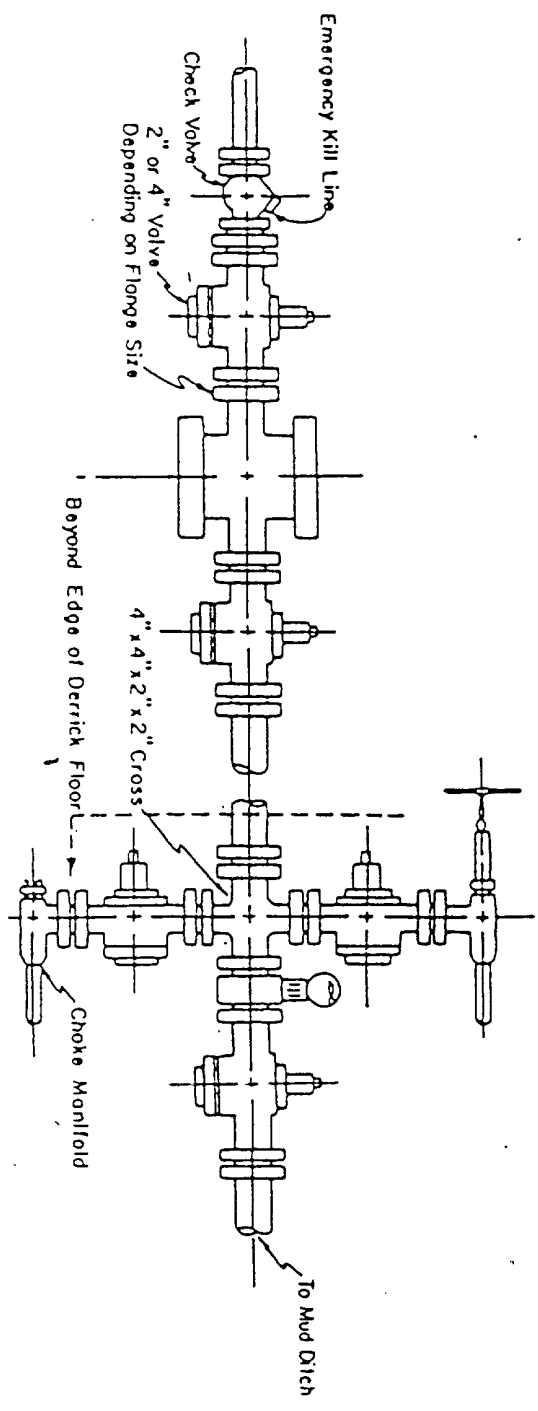
MESA PETROLEUM CO. PERMIAN BASIN DIVISION	
EXHIBIT V	
FOR PROPOSED LEILA FEDERAL #3	
DATE:	SCALE:

Blow-out Preventers hydril and choke manifold are all 900 Series



See Detail of 4" Flow Line and Choke Assembly

3,000 PSI WORKING PRESSURE BLOW-OUT PREVENTER HOOK-UP




3,000 PSI WORKING PRESSURE KILL, CHOKE, AND FILL CONNECTIONS

DETAIL OF 4" FLOW LINE CHOKE ASSEMBLY

Minimum assembly for 3,000 PSI working pressure will consist of three preventers. The bottom and middle preventers may be Cameron.

NOTE: HYDRIL not installed on shallow-low pressure wells. RAM type BOPs are API 10" X 3000 PSI

 MESPA PETROLEUM CO. <small>PERMIAN BASIN DIVISION</small>	<p>E X H I B I T</p> <p>V I</p>
---	---------------------------------