

UNITED STATES
DEPARTMENT OF THE INTERIOR
BUREAU OF LAND MANAGEMENT

CONTACT FIELDING
OFFICE NUMBER
OF COPIES REQUIRED
(Other instructions on
reverse side)

30-015-26555
BLM Roswell District
Modified Form No.
MD60-3160-2

APPLICATION FOR PERMIT TO DRILL, DEEPEN, OR PLUG BACK

1a. TYPE OF WORK
DRILL ☒ DEEPEN ☐ NOV 29 '90 PLUG BACK ☐

b. TYPE OF WELL
OIL WELL ☒ GAS WELL ☐ OTHER ☐

2. NAME OF OPERATOR
CHEVRON USA INC.

3. ADDRESS OF OPERATOR
P.O. Box 1150 MIDLAND TX 79702 ATTN: ED DOHERTY Rm 4111

4. LOCATION OF WELL (Report location clearly and in accordance with any State requirements.)
At surface 1805' FSL + 1980' FWL
At proposed prod. zone

14. DISTANCE IN MILES AND DIRECTION FROM NEAREST TOWN OR POST OFFICE*
14 miles North of CARLSBAD

10. DISTANCE FROM PROPOSED LOCATION TO NEAREST PROPERTY OR LEASE LINE, FT. (Also to nearest drlg. unit line, if any)
1805'

16. NO. OF ACRES IN LEASE
960

17. NO. OF ACRES ASSIGNED TO THIS WELL
40

18. DISTANCE FROM PROPOSED LOCATION TO NEAREST WELL, DRILLING, COMPLETED, OR APPLIED FOR, ON THIS LEASE, FT.
1300'

19. PROPOSED DEPTH
3750'

20. ROTARY OR CABLE TOOLS
ROTARY

21. ELEVATIONS (Show whether DF, RT, GR, etc.)
3376.3'

22. APPROX. DATE WORK WILL START*
11/21/90

5. LEASE DESIGNATION AND SERIAL NO.
N/M - 4986

6. IF INDIAN, ALLOTTEE OR TRIBE NAME

7. UNIT AGREEMENT NAME

8. FARM OR LEASE NAME
PACHECO FED. COM.

9. WELL NO.
4

10. FIELD AND POOL, OR WILDCAT
X FAGE-AWAY RIDGE DELAWARE

11. SEC., T., R., M., OR S.E. AND SURVEY OR AREA
SEC 31 T19S R28E

12. COUNTY OR PARISH
EDDY

13. STATE
NM

PROPOSED CASING AND CEMENTING PROGRAM

HOLE SIZE	CASING SIZE	WEIGHT/FOOT	GRADE	THREAD TYPE	SETTING DEPTH	QUANTITY OF CEMENT
12 1/4	8 5/8	23	M50	ST+C	500	Circ.
7 7/8	5 1/2	15.5	M50	LT+C	3750	Circ.

MUD PROGRAM: 0'-500' FW Spud mud 9.0. ppq.
500'-3750' BW STARCH 10#

BOPE Equipment: 3000 PSI. WP SEE ATTACHED CHEVRON
CLASS III BOP DRAWING.

APPROVAL SUBJECT TO
GENERAL REQUIREMENTS AND
SPECIAL STIPULATIONS
ATTACHED

IN ABOVE SPACE DESCRIBE PROPOSED PROGRAM: If proposal is to deepen or plug back, give data on present productive zone and proposed new productive zone. If proposal is to drill or deepen directionally, give pertinent data on subsurface locations and measured and true vertical depths. Give blowout preventer program, if any.

24. SIGNED E. O. Doherty TITLE T.A. Doherty DATE 11/6/90
(This space for Federal or State office use)

PERMIT NO. _____ APPROVAL DATE _____
APPROVED BY _____ TITLE _____ DATE 11-28-90
CONDITIONS OF APPROVAL, IF ANY: _____

*See Instructions On Reverse Side

OIL CONSERVATION DIVISION

DISTRICT I
P.O. Box 1980, Hobbs, NM 88240

P.O. Box 2088
Santa Fe, New Mexico 87504-2088

DISTRICT II
P.O. Drawer DD, Artesia, NM 88210

DISTRICT III
1000 Rio Brazos Rd., Aztec, NM 87410

WELL LOCATION AND ACREAGE DEDICATION PLAT

All Distances must be from the outer boundaries of the section

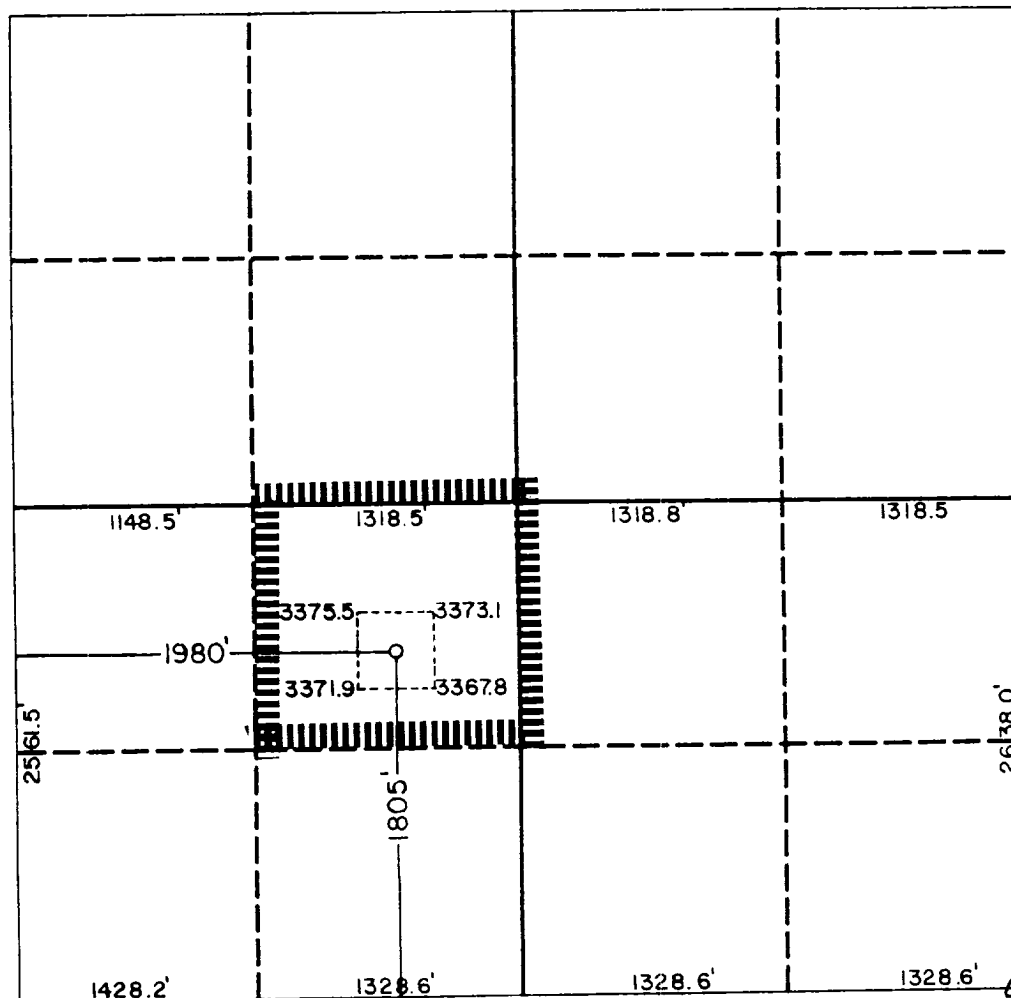
Operator CHEVRON USA INC.		Lease Pacheco Federal		Well No. 4
Unit Letter K	Section 31	Township 19 South	Range 28 East NMPM	County Eddy
Actual Footage Location of Well: 1805 feet from the South line and 1980 feet from the West line				
Ground level Elev. 3376.3	Producing Formation Delaware	Pool Fade- Away Ridge Delaware		Dedicated Acreage: 40 Acres

1. Outline the acreage dedicated to the subject well by colored pencil or hatchure marks on the plat below.
2. If more than one lease is dedicated to the well, outline each and identify the ownership thereof (both as to working interest and royalty).
3. If more than one lease of different ownership is dedicated to the well, have the interest of all owners been consolidated by communitization, unitization, force-pooling, etc.?

☐ Yes ☐ No If answer is "yes" type of consolidation

If answer is "no" list the owners and tract descriptions which have actually been consolidated. (Use reverse side of this form if necessary).

No allowable will be assigned to the well until all interests have been consolidated (by communitization, unitization, forced-pooling, or otherwise) or until a non-standard unit, eliminating such interest, has been approved by the Division.



OPERATOR CERTIFICATION

I hereby certify that the information contained herein is true and complete to the best of my knowledge and belief.

Signature _____

E.O. Wherity
Printed Name

Printed Name _____

E. O. DOHERTY

Position

T.A. Delg

COMPANY	
---------	--

CHEVRON USA, INC.

Date _____

11/5/90

SURVEYOR CERTIFICATION

I hereby certify that the well location shown on this plat was plotted from field notes of actual survey made by me or under my supervision. And that the same is true and correct to the best of my knowledge and belief.

Date Surveyed

✓ OCT 5 1990

Signature & Seal of
Professional Surveyor

Certificate No.	JOHN W. WEST,	676
	RONALD J. EIDSON,	3239



Chevron U.S.A. Inc.
P.O. Box 1150, Midland, TX 79702

RECEIVED

Permian Basin Production Business Unit

October 29, 1990

107-11-9-11-100

Application for Permit to Drill
Proposed Pacheco Fed. Com. #4
Eddy County, New Mexico

Bureau of Land Management
P. O. Box 1778
Carlsbad, NM 88220

Gentlemen:

We are submitting the information requested in NTL-6 which should accompany application for permit to drill.

Well: Pacheco Fed. Com. #4

1. Location: 1,805' FSL & 1,980 FWL Section 31, T-19-S, R-28-E
Eddy County, New Mexico
2. Elevation of unprepared ground: 3,376.3
3. Geologic Name of Surface Formation: Quaternary-Alluvium
4. Type Drilling Tools: Rotary
5. Proposed Drilling Depth: 3,750'
6. Estimated Top of Geologic Markers:

Yates	676'
Seven Rivers	1,207'
Queen	1,577'
San Andres	2,466'
Delaware	2,861'
Delaware Pay	3,201'
Bone Spring	3,411'
7. Estimated Depths at which anticipated Gas or Oil-Bearing Formations Expected:

Delaware Pay	3,201'-3,251'
--------------	---------------

8. Casing Program and Setting Depths:

	<u>Size</u>	<u>Weight</u>	<u>Grade</u>	<u>Setting Depth</u>
Surface	8 5/8"	24#	K55	500'
Production	5 1/2"	15.50#	K55	3,750'

9. Casing Setting Depths and Cementing Program:

- A. Surface casing will be cemented to surface using Class "C" cement. Exact volumes and additives will be based on severity of lost returns historically experienced in this area. Top jobs will be performed as necessary to bring cement to surface.
 - B. Production casing will be cemented to surface with Class "C" cement. If cement is not circulated a temperature survey will be run to determine cement top.
10. Prior to drilling below surface and intermediate casing, a BOP hook-up for 3,000 psi will be installed.

11. Circulating Media:

0 - 500'	FW Spud Mud
500 - 3,750'	Brine Water Starch

12. Testing, Logging, and Coring Program

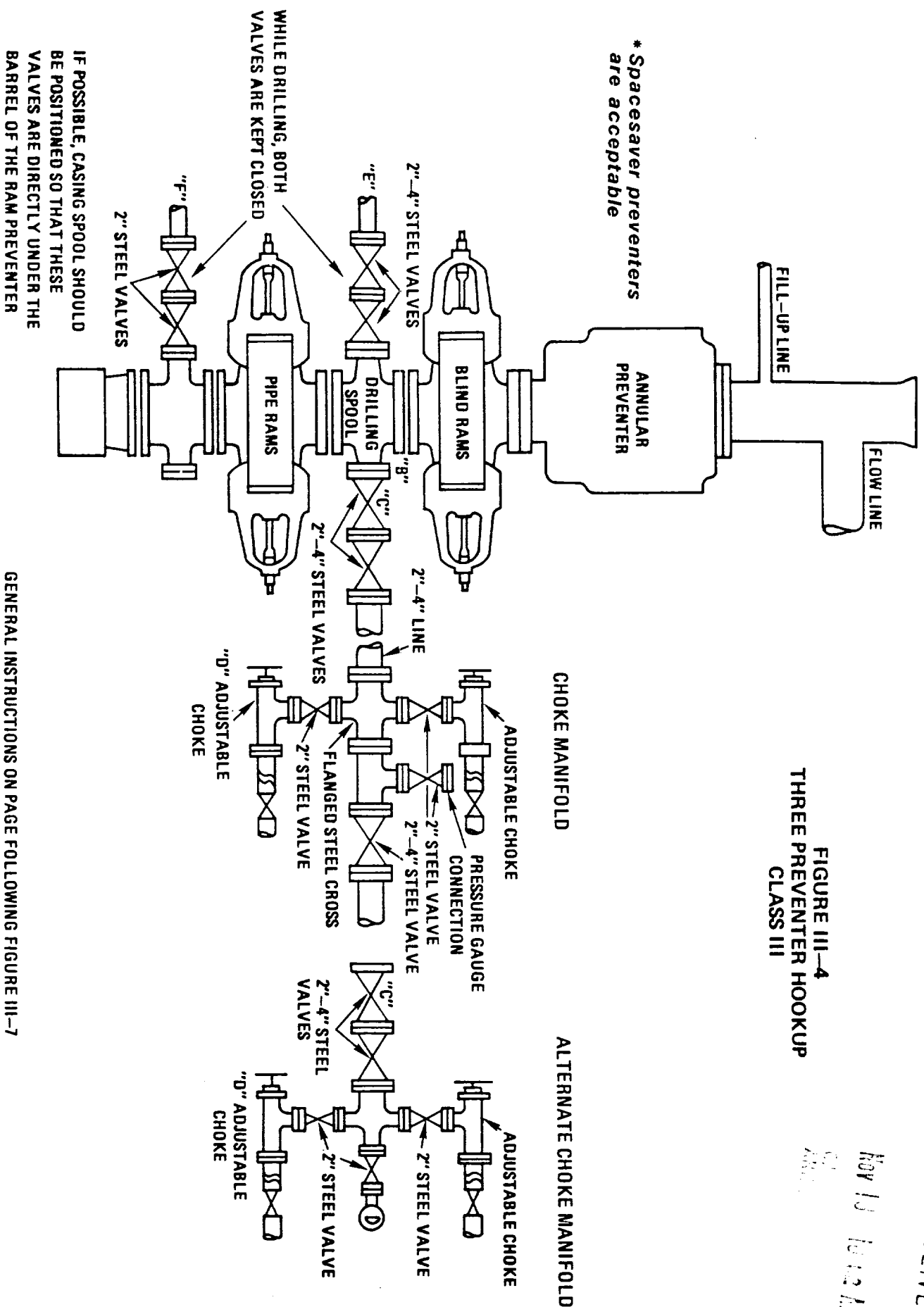
- A. No drill stem test are planned.
 - B. Open hole logs will be run at total depth.
 - C. 60' of coring is planned.
13. Abnormal Pressure or Temperature and Hydrogen Sulfide Gas:
- A. No abnormal pressure or temperature is anticipated; however, BOP's, as specified in item 10 above will be installed.
14. Anticipated Starting Date:
- Drilling operations should begin approximately November 14, 1990.

HOBBBS DIVISION CLASS III PREVENTER

RECEIVED

NOV 10 10 12 AM '90

FIGURE III-4
THREE PREVENTER HOOKUP
CLASS III



— OVER —

The blowout preventer shall be nipped up as needed and a spare set of drill pipe rams shall be on location. The ram preventers may be two singles or a double type. If full opening flanged outlets are on the side of the rams, then they may be used for connecting the choke line (4") and the kill line (2"). A set of spare flange bolts and nuts will be on location at all times for all flanges used.

The substructure height shall be sufficient to install a rotating blowout preventer.

The accumulator shall be equipped with two pumps. One shall be powered with air, the other will be powered with electricity. Each pump shall be capable of fluid charging the total accumulator from precharge pressure to rated pressure within 2 minutes. The minimum nitrogen precharge pressure shall be 750 psi. The pressurized fluid volume stored in the accumulators shall be sufficient to close all pressure operated devices simultaneously within 19 seconds, after closure, the remaining accumulator pressure shall be not less than 1500 psi with the remaining accumulator fluid volume at least 50 percent of the original.

A remote closing manifold located on the rig floor shall be operational. The closing manifold and remote shall have a separate control for each pressure-operated device. Controls are to be labeled as to device and opened or closed. All controls are to be left in the open position when not in use. A pressure reducer and regulator will be provided for operating the annular preventer. All lines from the accumulator to the preventer will be rated to the same pressure rating of the preventer. The accumulator shall be placed away from the rig floor, the distance is specified in MRDC. Hydraulic fluid must meet RP-53 specifications.

The choke manifold and all lines are to be supported by metal stands and securely anchored. The choke flow line, relief lines and choke lines shall be as straight as possible and without sharp turns.

The choke flow line valves and kill line valves and all ram preventers must be equipped with stem extension, universal joints if needed, and hand wheels which extend beyond the edge of the substructure constructed to facilitate easy operation from outside the substructure. All other valves shall be equipped with handles.



Chevron U.S.A. Inc.
P.O. Box 1150, Midland, TX 79702

RECEIVED

OCT 30 1990

Permian Basin Production Business Unit

October 29, 1990

Bureau of Land Management
P. O. Box 1778
Carlsbad, NM 88220

Gentlemen:

The following is Chevron U.S.A. Inc.'s plan for surface use restoration associated with the drilling of our Pacheco Fed. Com. #4 to be located 1,805 feet from the South line and 1,980 feet from the West line of Section 31, T-19-S, R-28-E, Eddy County, New Mexico.

After completion of drilling and/or completion operations, all equipment and other material not needed for operations will be removed. Pits will be filled and the location cleaned of all trash and junk to leave the well site in as aesthetically pleasing condition as possible. Any unguarded pits containing fluids will be fenced until they are filled.

After abandonment of the well, surface restoration will be in accordance with the agreement with the surface owner. Pits will be filled and the location will be cleaned. The pit area, well pad, and all unneeded access road will be ripped to promote revegetation. Rehabilitation should be accomplished within ninety (90) days after abandonment.

Yours very truly,

M. E. Akins
Drilling Superintendent

ED:mjc
MDD01029.04

MULTI-POINT SURFACE USE PLAN PACHECO FED. COM. #4

1. Existing Road

To reach proposed location start at Hobbs NM travel west to mile marker 44 approximately 60 miles. Turn right on Co. Rd. #243 go 13.2 miles to Illinois Camp Road. Turn right go 2 miles. Turn right on caliche road go 1/2 mile to new location. Exhibit A

2. Planned Access Roads

20' of new access road is required.

3. Location of Existing Wells

Exhibit B shows existing wells within a one mile radius of proposed well.

4. Location of Production Facilities

A 2 3/8" steel flowline will be laid to current production facilities in NW 1/4 of SW 1/4 of Section 31.

To protect livestock and wildlife, the reserve pit will be fenced.

Upon completion of drilling, the location and surrounding area will be cleared of all debris. All trash will be disposed of in the trash pit.

5. Water Supply

Water for drilling and completion operations will be purchased from a supplier and transported to the well site by truck.

6. Source of Construction Materials

Chevron plans to excavate a 25,000 cubic yard pit in Sec. 31, T-19-S R-28-E Eddy County, New Mexico.

7. Methods of Handling Waste Disposal

- A. The drill cuttings, fluids, and completion fluids will be placed in the reserve pit. The reserve pit will be fenced on three sides away from the pad during drilling and the fourth side as soon as the rig moves out. The reserve pit will be allowed to dry. Reserve pit contents will be pushed into adjacent caliche pit and covered with location top soil.

Upon completion, the pad will be leveled, contoured and reseeded with the appropriate seed mixture.

- B. All garbage and trash will be placed in a trash container to be hauled off location.
- C. Chemical toilets will be provided and maintained during drilling operations. See Exhibit C for location.

8. Ancillary Facilities

No ancillary facilities are planned.

9. Well Site Layout

Location of drilling equipment, rig orientation, and access road is shown on Exhibit C.

The reserve pit will be lined with plastic to prevent liquids from soaking into the surrounding soil.

10. Plans for Restoration of Surface

When well is abandoned, the location and access road will be cleaned and restored to the original topographical contours as much as possible. The area will be reseeded with the appropriate seed mixture.

If the well is productive, areas not used in production will be contoured and seeded with stipulated seed mixture. Production equipment will be painted the color designated by the Bureau of Land Management.

11. Surface Ownership

Surface ownership is Federal Lease.

12. Other Information

Refer to archaeological report, NMAS-1990-11-0 for a description of the topography, flora, fauna, soil characteristics, dwellings, historical, and cultural sites.

13. Lessee's or Operators Representative

M. E. Akins
P. O. Box 1150
Midland, TX 79702

14. Certification

I hereby certify that I, or persons under my direct supervision, have inspected the proposed drillsite and access route; that the statements made in this plan are to the best of my knowledge, true and correct; and, that the work associated with the operations proposed herein will be performed by Chevron U.S.A. Inc., and its contractors and subcontractors in conformity with this plan and the terms and conditions under which it is approved.



M. E. Akins
Drilling Superintendent

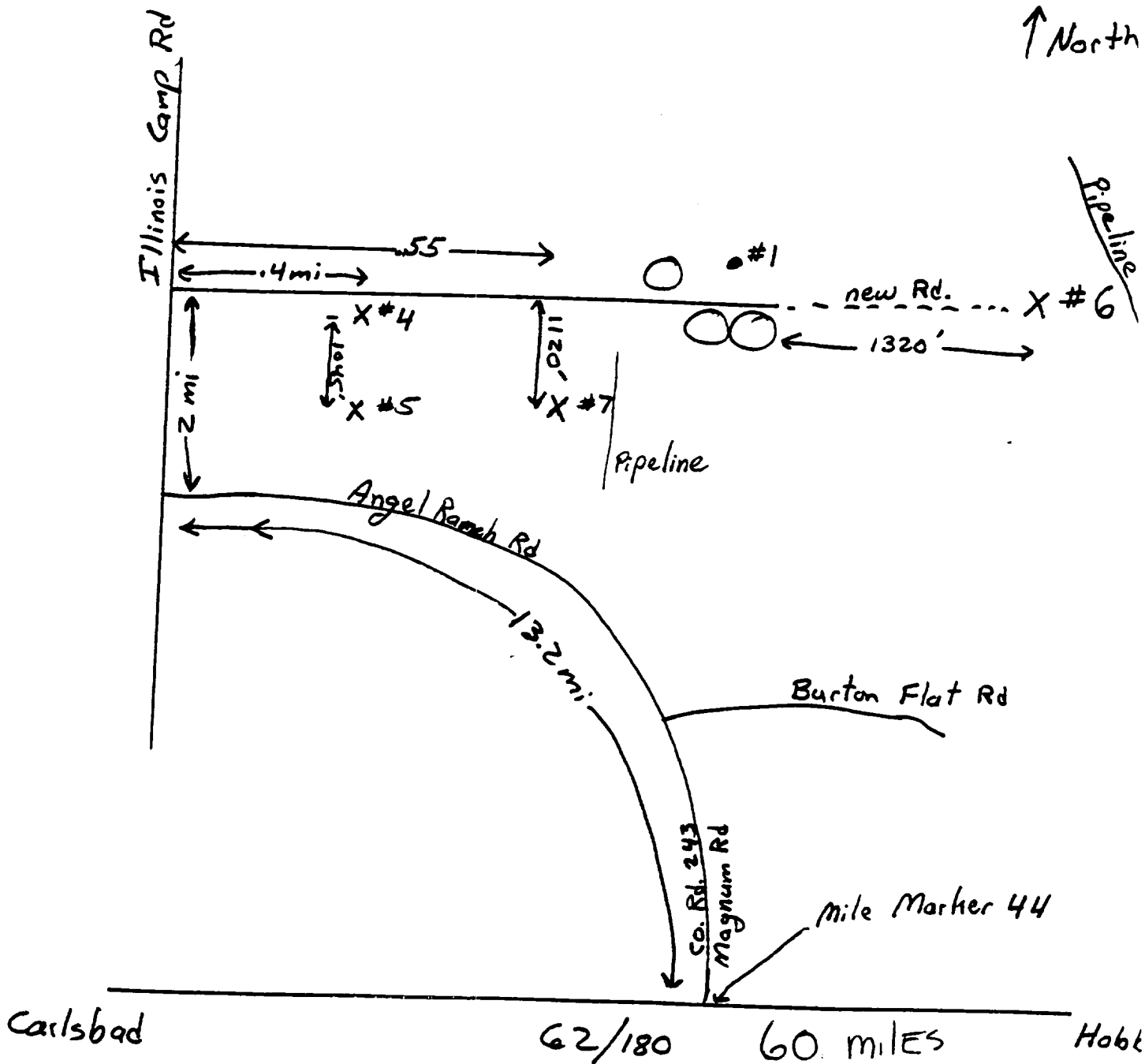
ED:mjc
MDD01029.04

Attachments

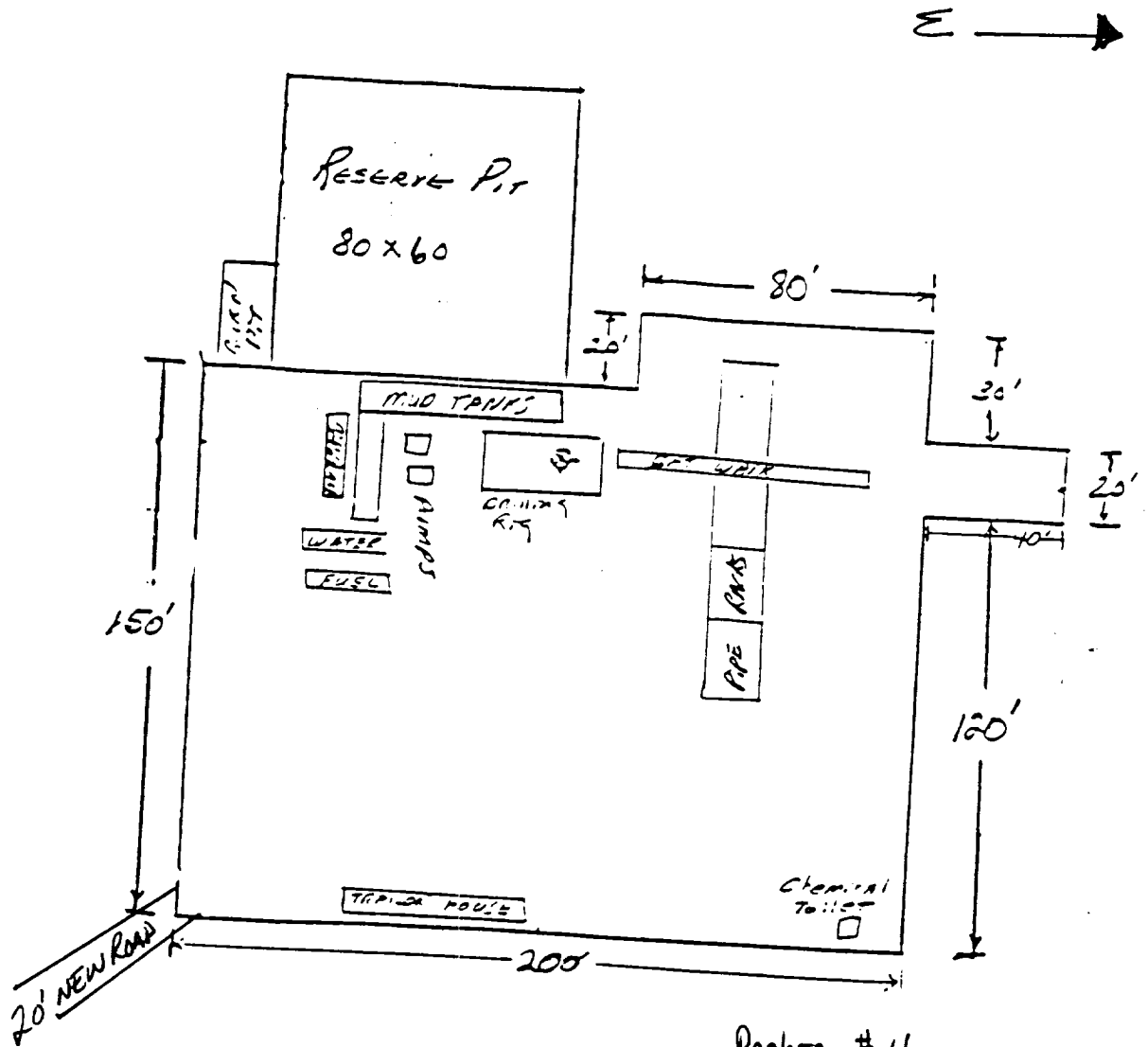
Pacheco # 4, 5, 6, 7

Exhibit 'A'
Pacheco #
SEC 31 T19S
EDDY, County

↑ North



- | | | |
|----|--------------|---------------|
| #4 | V-door West | 20' new rd. |
| #5 | V-door East | 1000' new rd |
| #6 | V-door North | 1320' new rd. |
| #7 | V-door East | 1000' new rd |



Pacheco # 4

Exhibit 'C'

SEC 31 T19S R28E

EDDY CO. NM