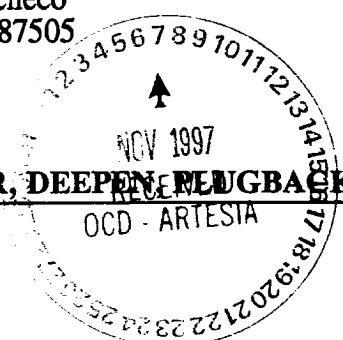


District I  
 PO Box 1980, Hobbs, NM 88241-1980  
 District II  
 811 S. 1st Street, Artesia, NM 88210-2834  
 District III  
 1000 Rio Brazos Rd., Aztec, NM 87410  
 District IV  
 2040 South Pacheco, Santa Fe, NM 87505

State of New Mexico  
 Energy, Minerals & Natural Resources Department

OIL CONSERVATION DIVISION  
 2040 South Pacheco  
 Santa Fe, NM 87505

**CHY 4409**  
 Revised October 18, 1994  
 Instructions on back  
 Submit to Appropriate District Office  
 State Lease - 6 Copies  
 Fee Lease - 5 Copies



AMENDED REPORT

**APPLICATION FOR PERMIT TO DRILL, RE-ENTER, DEEPEN, PLUG BACK, OR ADD A ZONE**

1 Operator name and Address ARCO PERMIAN P.O. BOX 1610 MIDLAND, TX 79702		2 OGRID Number 000990
4 Property Code 20761		3 API Number 30-0 15-29925
5 Property Name BARCLAY STATE		6 Well No. 7

7 Surface Location

UL or lot no.	Section	Township	Range	Lot. Idn	Feet from the	North/South Line	Feet from the	East/West line	County
P	2	23S	31E		660	SOUTH	660	EAST	EDDY

8 Proposed Bottom Hole Location If Different From Surface

UL or lot no.	Section	Township	Range	Lot. Idn	Feet from the	North/South Line	Feet from the	East/West line	County
9 Proposed Pool 1 LIVINGSTON RIDGE SOUTH (DELAWARE) 96149					10 Proposed Pool 2				

11 Work Type Code N	12 Well Type Code O	13 Cable/Rotary R	14 Lease Type Code S	15 Ground Level Elevation 3454
16 Multiple NO	17 Proposed Depth 8600	18 Formation DELAWARE	19 Contractor PETERSON DRLG	20 Spud Date 12/97

21 Proposed Casing and Cement Program

Hole Size	Casing Size	Casing weight/foot	Setting Depth	Sacks of Cement	Estimated TOC
17 1/2	13 3/8	48	860	775	SURE
12-1/4	8 5/8	32 23	4600	1800	SURE
7 7/8	5 1/2	15.5/17	8600	860	4500

22 Describe the proposed program. If this application is to DEEPEN or PLUG BACK give the data on the present productive zone and proposed new productive zone. Describe the blowout prevention program, if any. Use additional sheets if necessary

Subject well planned as a 8600' straight hole.  
 3000 psi BOPE will be used from 860' to TD.

*Part ID-1  
 11-14-97  
 API & JOC*

23 I hereby certify that the information given above is true and complete to the best of my knowledge and belief.

Signature: *Elizabeth A. Casbeer*

Printed name: ELIZABETH A. CASBEER

Title: 11/5/97

OIL CONSERVATION DIVISION

Approved by: ORIGINAL SIGNED BY TIM W. GUM

Title: DISTRICT II SUPERVISOR

Approval Date: NOV 10 1997 Expiration Date: 11-10-98

DISTRICT I  
P.O. Box 1888, Hobbs, NM 88241-1888

State of New Mexico

Energy, Minerals and Natural Resources Department

Form C-102  
Revised February 10, 1994  
Submit to Appropriate District Office  
State Lease - 4 Copies  
Fee Lease - 3 Copies

DISTRICT II  
P.O. Drawer 88, Artesia, NM 88211-0719

OIL CONSERVATION DIVISION

DISTRICT III  
1000 Rio Brazos Rd., Artec, NM 87410

P.O. Box 2088

Santa Fe, New Mexico 87504-2088

AMENDED REPORT

DISTRICT IV  
P.O. Box 2088, Santa Fe, NM 87504-2088

WELL LOCATION AND ACREAGE DEDICATION PLAT

API Number <b>30-015-29925</b>	Pool Code <b>96149</b>	Pool Name <b>LIVINGSTON RIDGE SOUTH (DELAWARE)</b>
Property Code <b>20761</b>	Property Name <b>BARCLAY STATE</b>	Well Number <b>7</b>
OGRID No. <b>000990</b>	Operator Name <b>ARCO PERMIAN</b>	Elevation <b>3454</b>

Surface Location

UL or lot No.	Section	Township	Range	Lot Idn	Feet from the	North/South line	Feet from the	East/West line	County
<b>P</b>	<b>2</b>	<b>23 S</b>	<b>31 E</b>		<b>660</b>	<b>SOUTH</b>	<b>660</b>	<b>EAST</b>	<b>EDDY</b>

Bottom Hole Location If Different From Surface

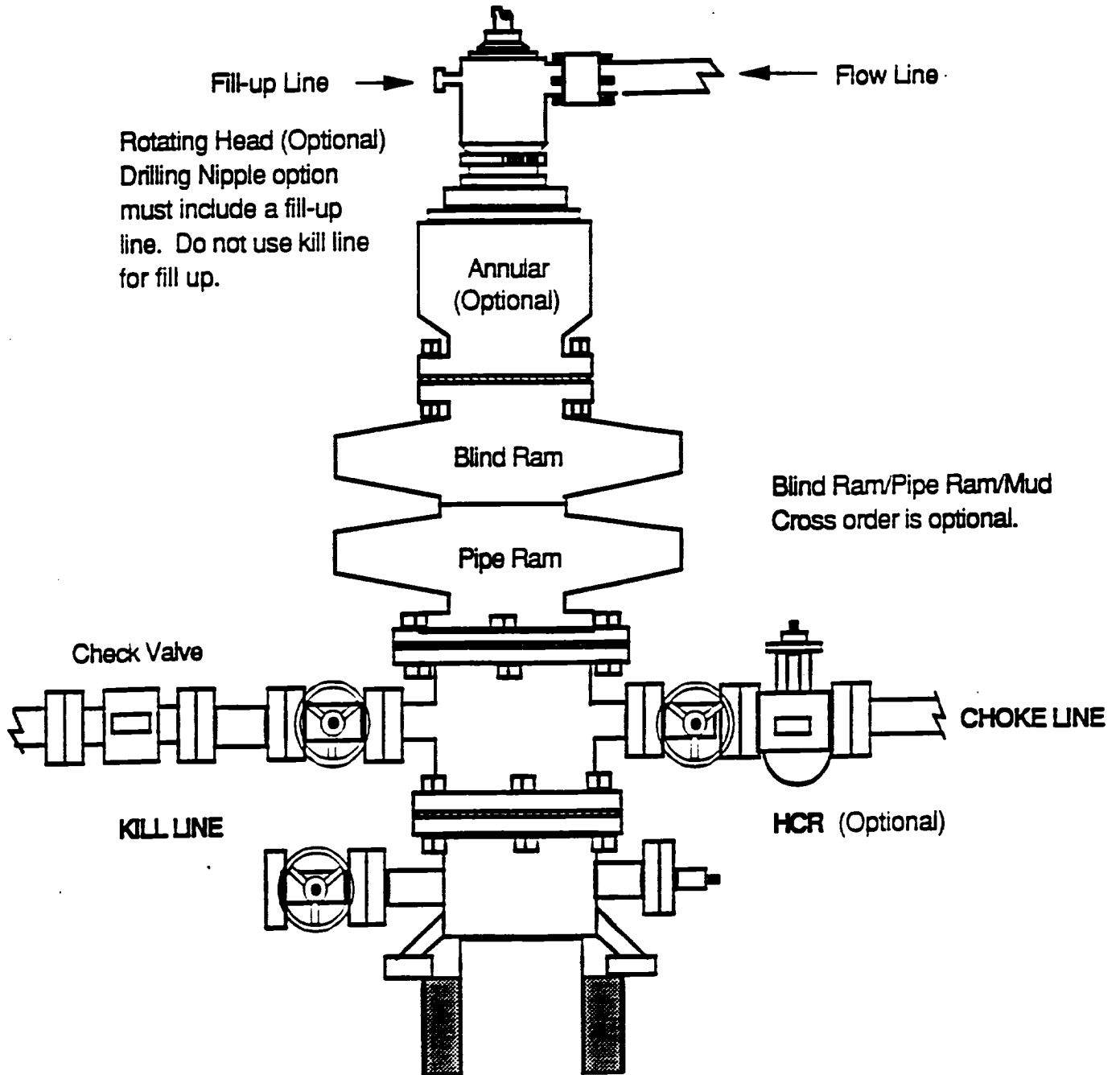
UL or lot No.	Section	Township	Range	Lot Idn	Feet from the	North/South line	Feet from the	East/West line	County

Dedicated Acres <b>40</b>	Joint or Infill	Consolidation Code	Order No.
------------------------------	-----------------	--------------------	-----------

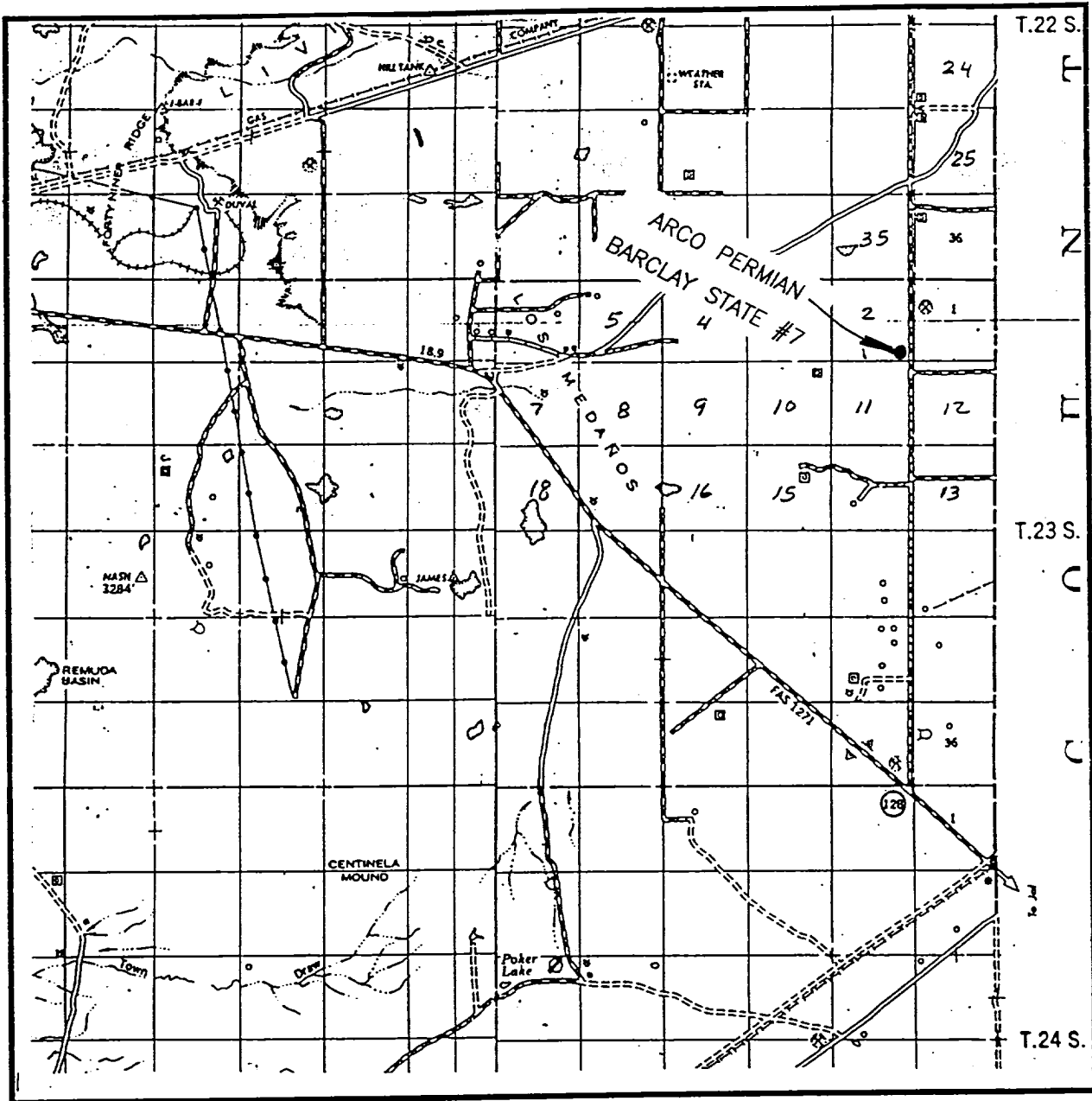
NO ALLOWABLE WILL BE ASSIGNED TO THIS COMPLETION UNTIL ALL INTERESTS HAVE BEEN CONSOLIDATED OR A NON-STANDARD UNIT HAS BEEN APPROVED BY THE DIVISION

LOT 4 39.49 AC.	LOT 3 39.64 AC.	LOT 2 39.78 AC.	LOT 1 39.95 AC.
<p><b>OPERATOR CERTIFICATION</b></p> <p><i>I hereby certify the the information contained herein is true and complete to the best of my knowledge and belief.</i></p> <p><i>Elizabeth A. Casbeer</i> Signature</p> <p><b>ELIZABETH A. CASBEER</b> Printed Name</p> <p><b>REG. COMP. ANALYST</b> Title</p> <p><b>11/5/97</b> Date</p>			
<p><b>SURVEYOR CERTIFICATION</b></p> <p><i>I hereby certify that the well location shown on this plat was plotted from field notes of actual surveys made by me or under my supervision, and that the same is true and correct to the best of my belief.</i></p> <p><b>OCTOBER 21, 1997</b></p> <p>Date Surveyed <span style="float: right;">JLP</span></p> <p><i>Ronald J. Eidson</i> Signature of Professional Surveyor</p> <p><b>RONALD J. EIDSON</b> P.O. Num. 87-111697</p> <p>Certificate No. <b>RONALD J. EIDSON, 3239</b> <b>GARY G. EIDSON, 12841</b> <b>MACDONALD, 12185</b></p>			

**DRILLING OPERATIONS**  
**CLASS - 1: NORMAL PRESSURE < 10 PPG**  
**OPTION - 1: ARCO STANDARD BOPE STACK**



# VICINITY MAP

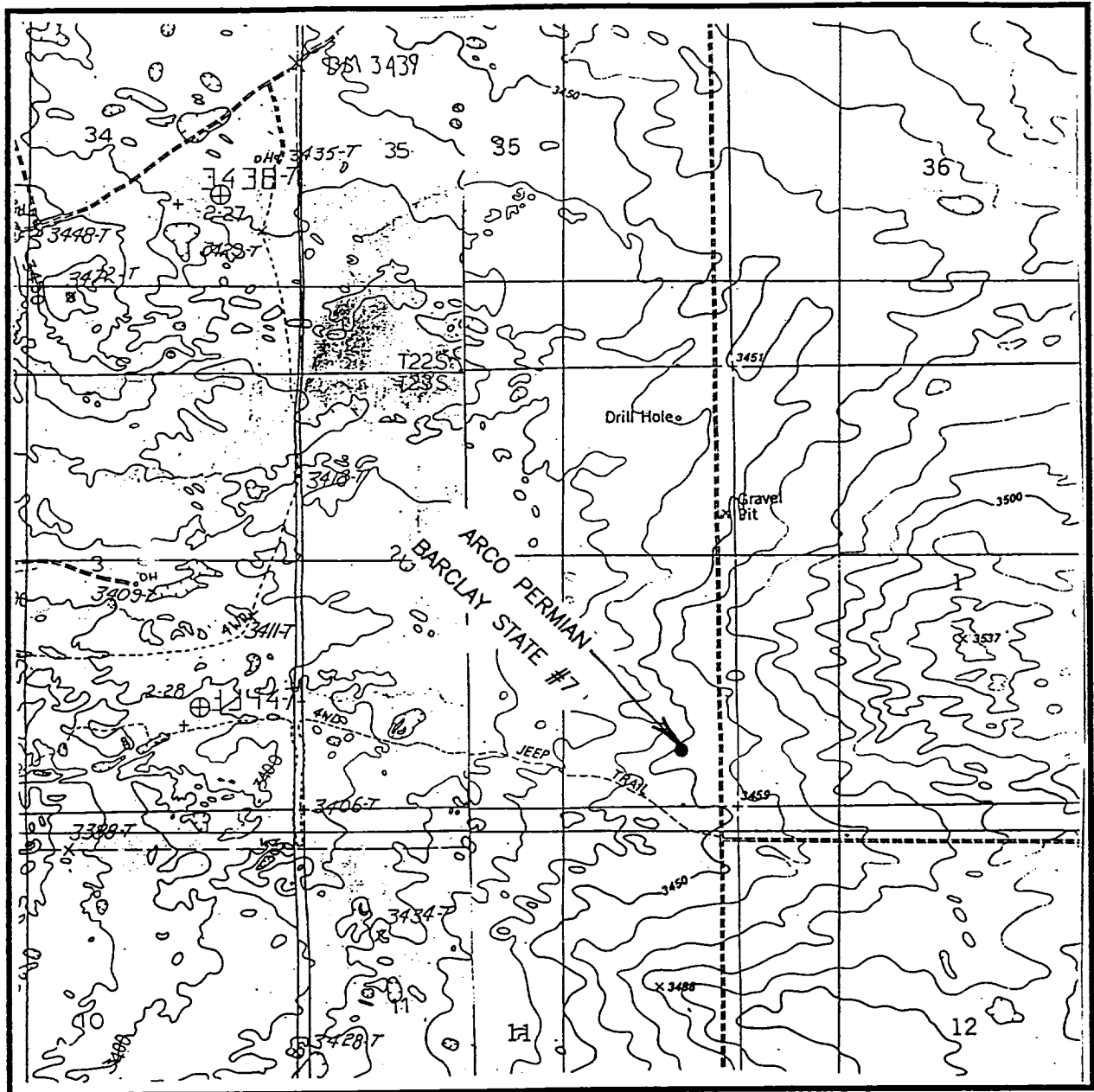


SCALE: 1" = 2 MILES

SEC. 2 TWP. 23-S RGE. 31-E  
 SURVEY N.M.P.M.  
 COUNTY EDDY  
 DESCRIPTION 660' FSL & 660' FEL  
 ELEVATION 3454'  
 OPERATOR ARCO PERMIAN  
 LEASE BARCLAY FEDERAL

**JOHN WEST ENGINEERING**  
**HOBBS, NEW MEXICO**  
 (505) 393-3117

# LOCATION VERIFICATION MAP



SCALE: 1" = 2000'

CONTOUR INTERVAL - 10'

SEC. 2 TWP. 23-S RGE. 31-E

SURVEY N.M.P.M.

COUNTY EDDY

DESCRIPTION 660' FSL & 660' FEL

ELEVATION 3454'

OPERATOR ARCO PERMIAN

LEASE BARCLAY FEDERAL

U.S.G.S. TOPOGRAPHIC MAP  
 BOOTLEG RIDGE, & LOS MEDANOS, N.M.

**JOHN WEST ENGINEERING  
 HOBBS, NEW MEXICO**

**(505) 393-3117**