

District I
 PO Box 1980, Hobbs, NM 88241-1980
 District II
 PO Drawer DD, Artesia, NM 88211-0719
 District III
 1000 Rio Brazos Rd., Aztec, NM 87410
 District IV
 PO Box 2088, Santa Fe, NM 87504-2088

State of New Mexico
 Energy, Minerals & Natural Resources Department

OIL CONSERVATION DIVISION
 PO Box 2088
 Santa Fe, NM 87504-2088

Form C-101
 Revised February 10, 1994
 Instructions on back
 Submit to Appropriate District Office
 State Lease - 6 Copies
 Fee Lease - 5 Copies

elky BLM HV

*Post EXP INT
 4-300*

AMENDED REPORT

APPLICATION FOR PERMIT TO DRILL, RE-ENTER, DEEPEN, PLUG BACK, OR ADD A ZONE

Operator Name and Address: Sonat Exploration Co. - Midland 110 W. Louisiana, Suite 500 Midland, Tx 79701		OGRID Number 109487
		API Number 30-015-30077
Property Code 17914	Property Name Todd "2" State	Well No. 11

Surface Location

UL or lot no.	Section	Township	Range	Lot Idn	Feet from the	North/South line	Feet from the	East/West line	County
K	2	24S	31E		1980	south	2310	west	Eddy

Proposed Bottom Hole Location If Different From Surface

UL or lot no.	Section	Township	Range	Lot Idn	Feet from the	North/South line	Feet from the	East/West line	County
Proposed Pool 1 Ingle Wells; Delaware 33745					Proposed Pool 2				

Work Type Code N	Well Type Code O	Cable/Rotary R	Lease Type Code S	Grossed Level Elevation 3483
Multiple N	Proposed Depth 8,700'	Formation Delaware	Contractor n/a	Spud Date 1st Qtr 1998

Proposed Casing and Cement Program

Hole Size	Casing Size	Casing weight/foot	Setting Depth	Sacks of Cement	Estimated TOC
14-3/4"	11-3/4"	42# WC-40	670'	Suff to circ	surface
11"	8-5/8"	24# J55	4,300'	Suff to circ	surface
7-7/8"	5-1/2"	17# J55	8,700	2100 sx	500'

Describe the proposed program. If this application is to DEEPEN or PLUG BACK give the data on the present productive zone and proposed new productive zone. Describe the blowout prevention program, if any. Use additional sheets if necessary.

This proposed well is a Delaware test.
 B. O. P. sketch is attached.

*Part TD-1
 3-20-98
 API & Loc*



I hereby certify that the information given above is true and complete to the best of my knowledge and belief.

Signature: *Laura Clepper*
 Printed name: Laura Clepper
 Title: Engineering Technician
 Date: 2/6/98
 Phone: 915/684-0400

OIL CONSERVATION DIVISION
 Approved by: ORIGINAL SIGNED BY TIM W. GUM
 Title: DISTRICT II SUPERVISOR
 Approval Date: FEB 18 1998
 Expiration Date: 2-18-99
 Conditions of Approval:
 Attached

DISTRICT I
P.O. Box 1900, Hobbs, NM 88241-1900

DISTRICT II
P.O. Drawer DD, Artesia, NM 88211-0719

DISTRICT III
1000 Rio Brazos Rd., Aztec, NM 87410

DISTRICT IV
P.O. Box 2088, Santa Fe, NM 87504-2088

State of New Mexico
Energy, Minerals and Natural Resources Department

Form C-102
Revised February 10, 1994
Submit to Appropriate District Office
State Lease - 4 Copies
Fee Lease - 3 Copies

OIL CONSERVATION DIVISION

P.O. Box 2088
Santa Fe, New Mexico 87504-2088

AMENDED REPORT

WELL LOCATION AND ACREAGE DEDICATION PLAT

API Number	Pool Code 33745	Pool Name Ingle Wells; Delaware
Property Code 17914	Property Name TODD "2" STATE	Well Number 11
OGRID No. 109487	Operator Name SONAT EXPLORATION COMPANY	Elevation 3483

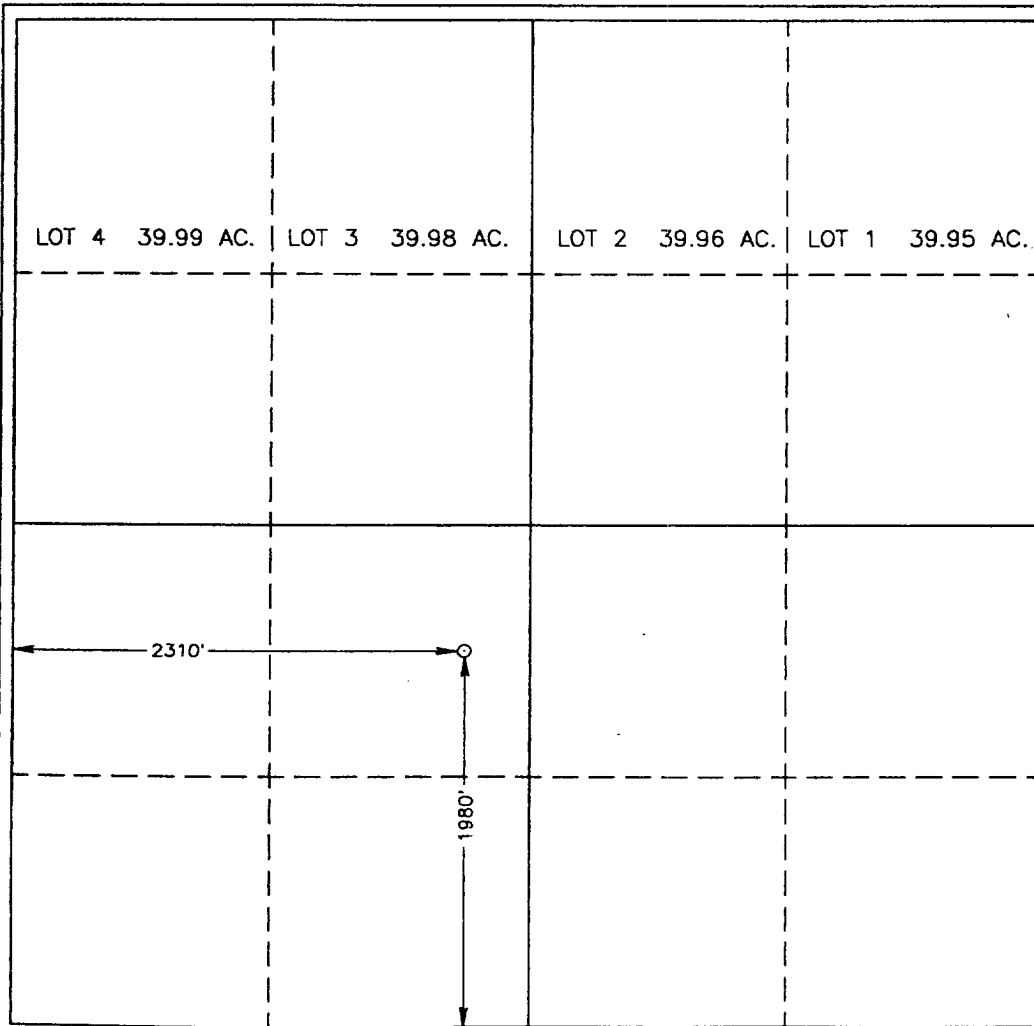
Surface Location

UL or lot No.	Section	Township	Range	Lot Idn	Feet from the	North/South line	Feet from the	East/West line	County
K	2	24 S	31 E		1980	SOUTH	2310	WEST	EDDY

Bottom Hole Location If Different From Surface

UL or lot No.	Section	Township	Range	Lot Idn	Feet from the	North/South line	Feet from the	East/West line	County
Dedicated Acres 40		Joint or Infill	Consolidation Code		Order No.				

NO ALLOWABLE WILL BE ASSIGNED TO THIS COMPLETION UNTIL ALL INTERESTS HAVE BEEN CONSOLIDATED OR A NON-STANDARD UNIT HAS BEEN APPROVED BY THE DIVISION



OPERATOR CERTIFICATION

I hereby certify the the information contained herein is true and complete to the best of my knowledge and belief.

Laura Clepper
Signature

Laura Clepper
Printed Name

Engineering Technician
Title

2/6/98
Date

SURVEYOR CERTIFICATION

I hereby certify that the well location shown on this plat was plotted from field notes of actual surveys made by me or under my supervision, and that the same is true and correct to the best of my belief.

JANUARY 30, 1998
Date Surveyed

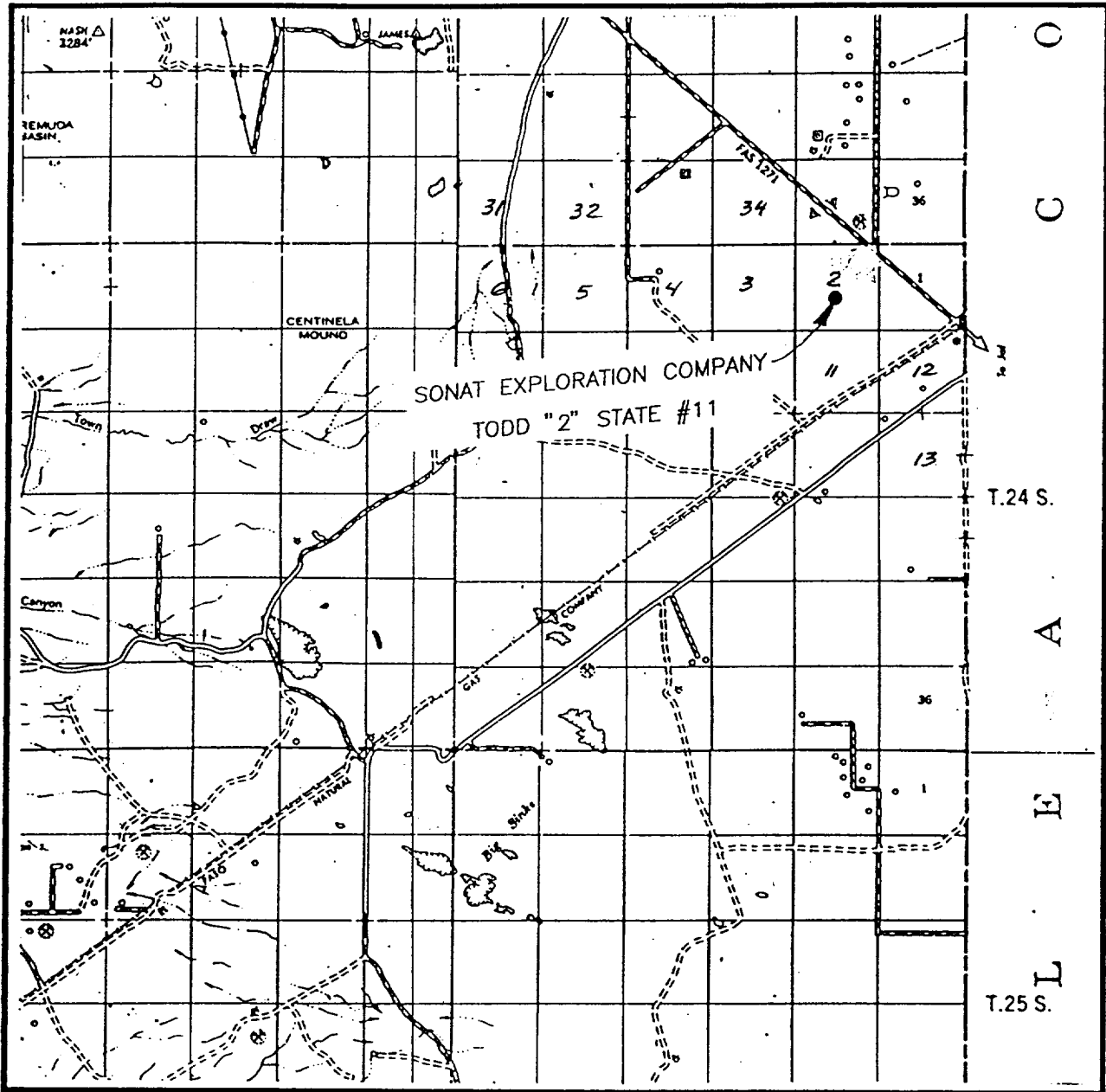
JLP
Signature

RONALD G. EIDSON
Professional Surveyor
NEW MEXICO
3239
2-04-98

P.O. Num 98-11-0151

Certificate No. RONALD G. EIDSON, 3239
SAMUEL EIDSON, 12841
RACON McDONALD, 12185

VICINITY MAP



SCALE: 1" = 2 MILES

SEC. 2 TWP. 24-S RGE. 31-E

SURVEY N.M.P.M.

COUNTY EDDY

DESCRIPTION 1980' FSL & 2310' FWL

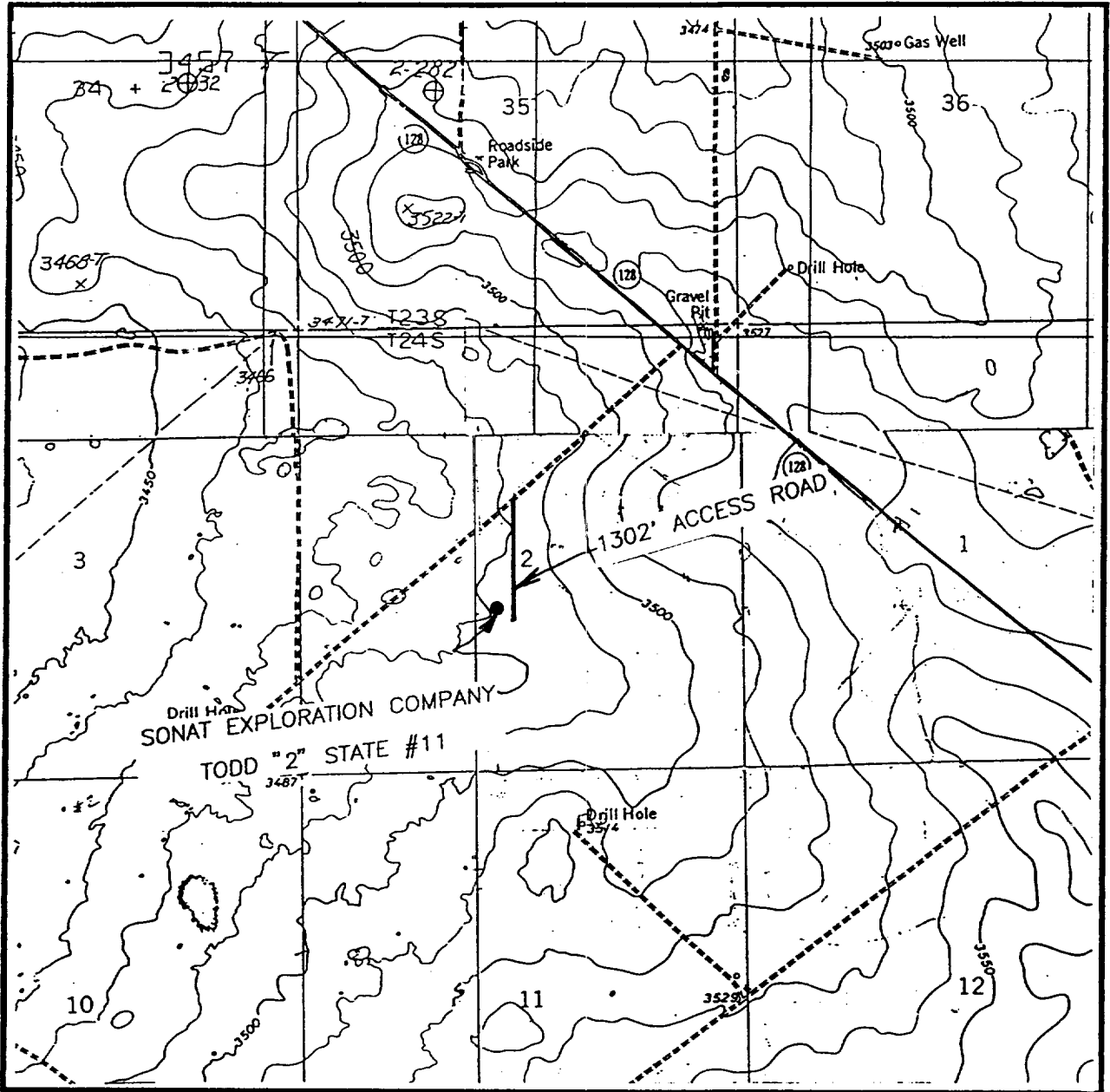
ELEVATION 3483'

OPERATOR SONAT EXPLORATION COMPANY

LEASE TODD "2" STATE

JOHN WEST ENGINEERING
HOBBS, NEW MEXICO
(505) 393-3117

LOCATION VERIFICATION MAP



SCALE: 1" = 2000'

CONTOUR INTERVAL - 10'

SEC. 2 TWP. 24-S RGE. 31-E

SURVEY N.M.P.M.

COUNTY EDDY

DESCRIPTION 1980' FSL & 2310' FWL

ELEVATION 3483'

OPERATOR SONAT EXPLORATION COMPANY

LEASE TODD "2" STATE

U.S.G.S. TOPOGRAPHIC MAP

PADUCA BREAKS NW, HAT MESA, NASH DRAW, BIG SINKS, N.M.

**JOHN WEST ENGINEERING
HOBBS, NEW MEXICO
(505) 393-3117**

SONAT EXPLORATION

West TEXAS BUSINESS UNIT

Minimum Requirements for a 3,000 psi BOP
Stack Manifold & Closing System

BOPS AND ALL
REMOTE CONTROL VALVES
CONTROLLED FROM RIG FLOOR.

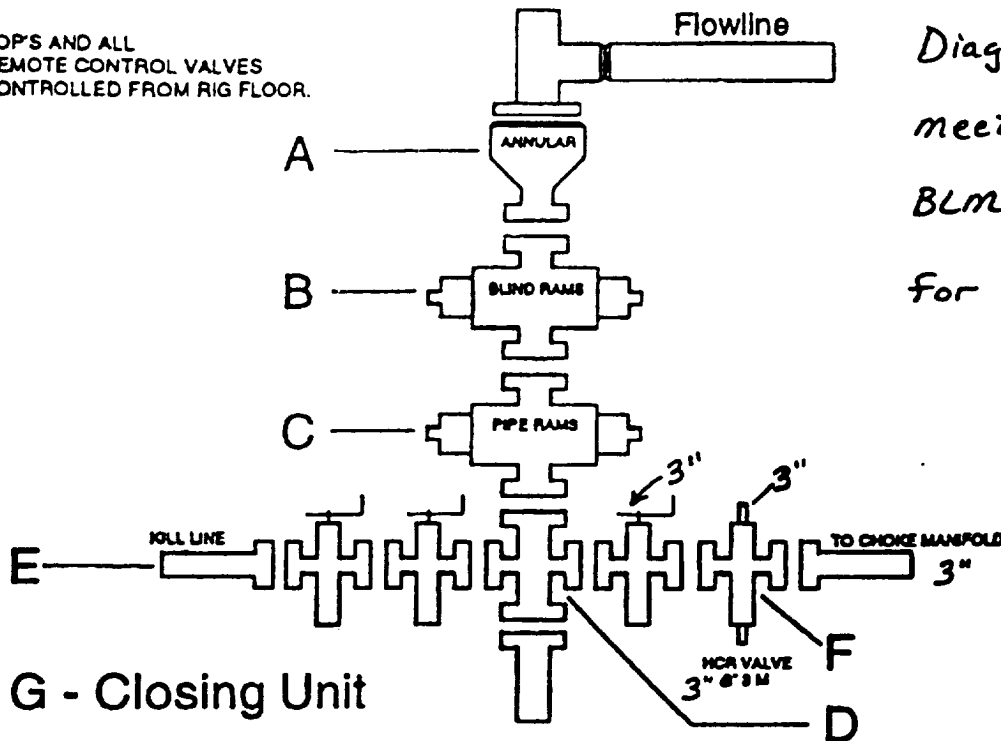


Diagram as shown
meets the minimum
BLM requirements
for a 3M stack.

- A. Annular BOP Must be 3000 psi Working Pressure.
- B. Blind Rams Between Annular & Pipe Rams w/ 3000 psi Working Pressure.
- C. Pipe Rams Below Blind Rams w/ 3000 psi Working Pressure.
Note: All Rams & Spools Must Meet Required I.D. for Hole Size.
- D. Drilling Spool w/ 2 Outlets for Choke Line & Kill Line
- E. Kill Line 2" 3 M w/ 2 Manual Valves Bolted & Flanged Below Bottom Pipe Rams. Either a Drilling Spool or the Outlet on the BOP Stack can be Used to Accommodate Kill Line and Choke Line.
- F. Choke Line w/ 3" 3 M Valves. Inside Valve can be Manual but the Outside Valve Must be Hydraulic (HCR). Choke Line Must be 3" 3 M.
- G. Closing Unit (Kooomey) w/ a Primary & Secondary Pressure Supply to Operate the BOP Stack. Also a N₂ Supply will be Provided as a Final Source of Operation to Close the BOP Stack. This Unit is Required to Contain a minimum of 1 1/2 Times the Needed Volume to Operate the BOP Stack at All Times. The Precharge of N₂ will be Checked Prior to Commencing Work for SONAT.

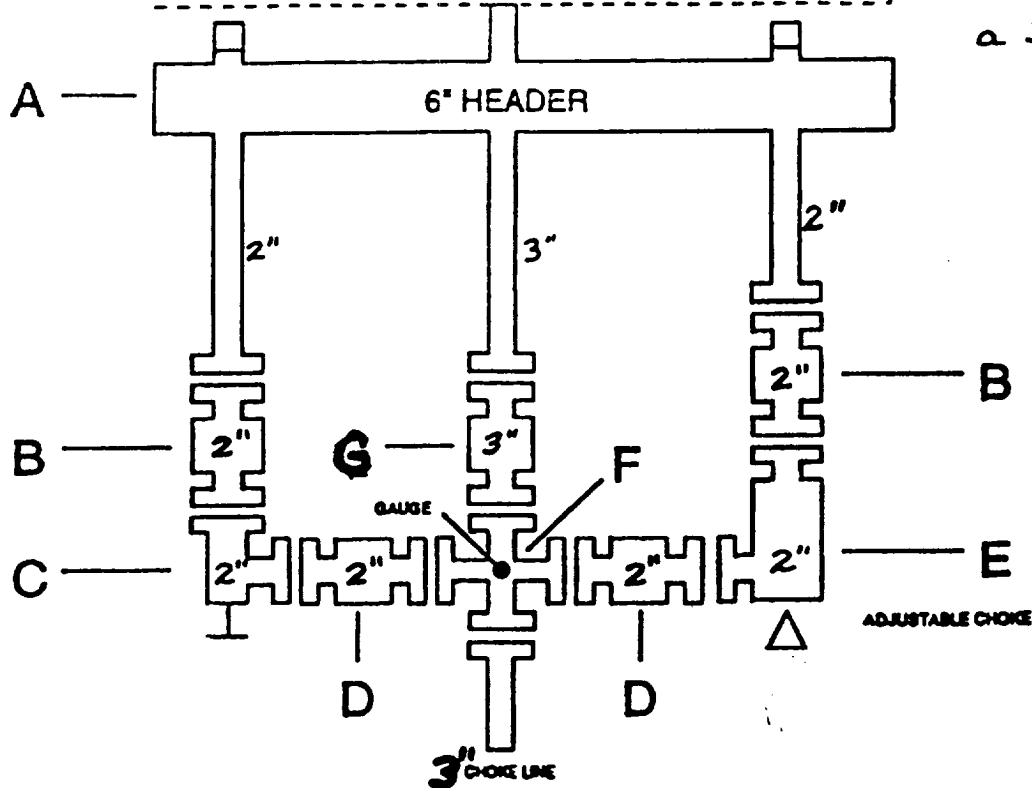
SONAT EXPLORATION

West ██████████ TEXAS BUSINESS UNIT

Minimum Requirements for a
3,000 psi BOP Stack Manifold

A Gas Buster is Preferred but not
Necessary on a 3,000 psi System

Diagram as shown
meets the minimum
BLM requirements +
a 3M stack.



- A. Header for Gas Expansion 6" O.D. Tube.
- B. 2" 3 M Manual Valves on Down Stream Side of Choke.
- C. 2" 3 M Manual Adjustable or Positive Choke.
- D. 2" 3 M Manual Valve
- E. 2" 3 M Adjustable w/ Remote Station
- F. 3" 3 M Tee w/ Gauge in Top Side 3" Choke Line

Note: All Pipe Will be Flanged & Welded. No Screwed Connections.

G. 3" 3M Manual Valve