

N. N. Oil Cons. Division
811 S. 1ST ST.
ARTESIA, NM 88210-2934

Form 3160-3
(July 1992)

SUBMIT IN TRIPLICATE*
(Other instructions on reverse side)

FORM APPROVED
OMB NO. 1004-0136
Expires: February 28, 1995

UNITED STATES
DEPARTMENT OF THE INTERIOR
BUREAU OF LAND MANAGEMENT

APPLICATION FOR PERMIT TO DRILL OR DEEPEN

1a. TYPE OF WORK
DRILL DEEPEN

b. TYPE OF WELL
OIL WELL GAS WELL OTHER
SINGLE ZONE MULTIPLE ZONE

2. NAME OF OPERATOR
PENWELL ENERGY, INC. (BILL PIERCE) 915-683-2534

3. ADDRESS AND TELEPHONE NO.
600 NORTH MARIENFELD, SUITE 1100 MIDLAND, TEXAS 79701

4. LOCATION OF WELL (Report location clearly and in accordance with any State requirements.)
At surface
580' FWL & 660' FNL SEC. 6 T20S-R28E EDDY CO. NM
330' At proposed prod. zone SAME
UNITED LOT 4

14. DISTANCE IN MILES AND DIRECTION FROM NEAREST TOWN OR POST OFFICE*
Approximately 11 miles North of Carlsbad, New Mexico

15. DISTANCE FROM PROPOSED* LOCATION TO NEAREST PROPERTY OR LEASE LINE, FT. (Also to nearest drlg. unit line, if any)
580'

16. NO. OF ACRES IN LEASE
331

17. NO. OF ACRES ASSIGNED TO THIS WELL
40

18. DISTANCE FROM PROPOSED* LOCATION TO NEAREST WELL, DRILLING, COMPLETED, OR APPLIED FOR, ON THIS LEASE, FT.
690'

19. PROPOSED DEPTH
6500'

20. ROTARY OR CABLE TOOLS
ROTARY

21. ELEVATIONS (Show whether DF, RT, GR, etc.)
3371' GR.

22. APPROX. DATE WORK WILL START*
As soon as approved

5. LEASE DESIGNATION AND SERIAL NO.
NM-96212

6. IF INDIAN, ALLOTTEE OR TRIBE NAME

7. UNIT AGREEMENT NAME

8. FARM OR LEASE NAME, WELL NO.
Angel #6 Federal # 8

9. API WELL NO.
30-015-30364

10. FIELD AND POOL, OR WILDCAT
OLD MILLMAN RANCH ASSOC. B

11. SEC., T., R., M., OR BLK. AND SURVEY OR AREA
SEC. 6 T20S-R28E B5

12. COUNTY OR PARISH
EDDY CO.

13. STATE
NM

RECEIVED
OCD - ARTESIA
J.P. AUG 16 1998

23. PROPOSED CASING AND CEMENTING PROGRAM **Capitan Controlled Water Basin**

SIZE OF HOLE	GRADE, SIZE OF CASING	WEIGHT PER FOOT	SETTING DEPTH	QUANTITY OF CEMENT
25"	20" Conductor	NA	40'	Cement to surface with Redi-mix.
17 1/2"	H-40 13 3/8"	48	450'	450 Sx. Circulate to surface.
11"	J-55 8 5/8"	32	2900'	750 Sx. Circulate to surface.
7 7/8"	J-55 5 1/2"	15.5	6500'	600 Sx. Estimate top cement 2600'

1. Drill 25" hole to 40'. Set 40' of 20" conductor and cement to surface with Redi-mix.
2. Drill 17 1/2" hole to 450'. Run and set 450' of 13 3/8" H-40 48# 8-R ST&C casing. Cement with 450 Sx. of Class "C" cement + 2% CaCl, circulate cement to surface.
3. Drill 2900' of 11" hole to 2900'. Run and set 2900' of 8 5/8" J-55 32# 8-R ST&C casing. Cement with 500 Sx. of Class "C" Halco Light, tail in with 250 Sx. of Class "C" + 2% CaCl, circulate cement to surface.
4. Drill 7 7/8" hole to 6500'. Run and set 6500' of 5 1/2" J-55 15.5# 8-R ST&C casing. Cement with 400 Sx. of Class "C" Halco Light, tail in with 200 Sx. of Class "H" cement + additives, estimate top of cement 2600'.

Subject to
Special Requirements and
Special Stipulations
Attached
Post ID-1
8-14-98
APE + LOC

IN ABOVE SPACE DESCRIBE PROPOSED PROGRAM: If proposal is to deepen, give data on present productive zone and proposed new productive zone. If proposal is to drill or deepen directionally, give pertinent data on subsurface locations and measured and true vertical depths. Give blowout preventer program, if any.

24. SIGNED Joel Janice TITLE Agent DATE 11/06/97

(This space for Federal or State office use)
PERMIT NO. _____ APPROVAL DATE _____

Application approval does not warrant or certify that the applicant holds legal or equitable title to those rights in the subject lease which would entitle the applicant to conduct operations thereon.

CONDITIONS OF APPROVAL, IF ANY:
Assistant Field Office Manager,
Acting Lands and Minerals
(ORIG. SGD.) ARMANDO A. LOPEZ TITLE _____ DATE AUG 03 1998

*See Instructions On Reverse Side

BOARD OF LAND MGMT.
ROSWELL OFFICE

1997 NOV -7 A 11: 34

RECEIVED

DISTRICT I
P.O. Box 1980, Hobbs, NM 88240

State of New Mexico
Energy, Minerals and Natural Resources Department

Form C-102
Revised February 10, 1994
Instruction on back
Submit to Appropriate District Office
State Lease - 4 Copies
Fee Lease - 3 Copies

DISTRICT II
P.O. Drawer DD, Artesia, NM 88210

OIL CONSERVATION DIVISION

DISTRICT III
1000 Rio Brazos Rd., Aztec, NM 87410

P.O. Box 2088
Santa Fe, New Mexico 87504-2088

AMENDED REPORT

WELL LOCATION AND ACREAGE DEDICATION PLAT

API Number		Pool Code 48035	Pool Name OLD MILLMAN RANCH-BONE SPRING ASSOC.
Property Code 20438	Property Name Angel "6" Federal		Well Number 8
OGRID No. 147380	Operator Name Penwell Energy Inc.		Elevation 3366'

Surface Location

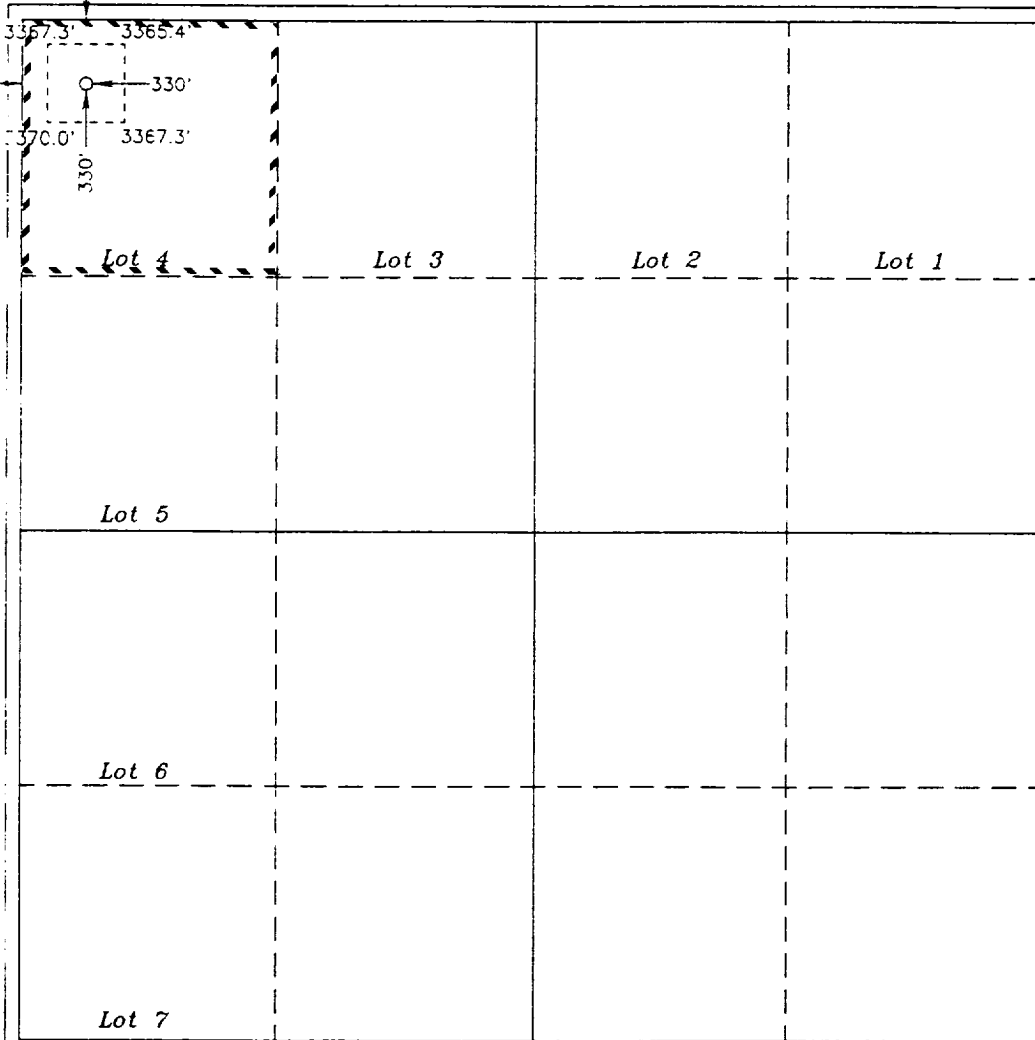
UL or lot No.	Section	Township	Range	Lot Idn	Feet from the	North/South line	Feet from the	East/West line	County
Lot 4	6	20 S	28 E		330	North	330	West	Eddy

Bottom Hole Location If Different From Surface

UL or lot No.	Section	Township	Range	Lot Idn	Feet from the	North/South line	Feet from the	East/West line	County

Dedicated Acres 40	Joint or Infill	Consolidation Code	Order No.
-----------------------	-----------------	--------------------	-----------

NO ALLOWABLE WILL BE ASSIGNED TO THIS COMPLETION UNTIL ALL INTERESTS HAVE BEEN CONSOLIDATED
OR A NON-STANDARD UNIT HAS BEEN APPROVED BY THE DIVISION



OPERATOR CERTIFICATION

I hereby certify the the information contained herein is true and complete to the best of my knowledge and belief.

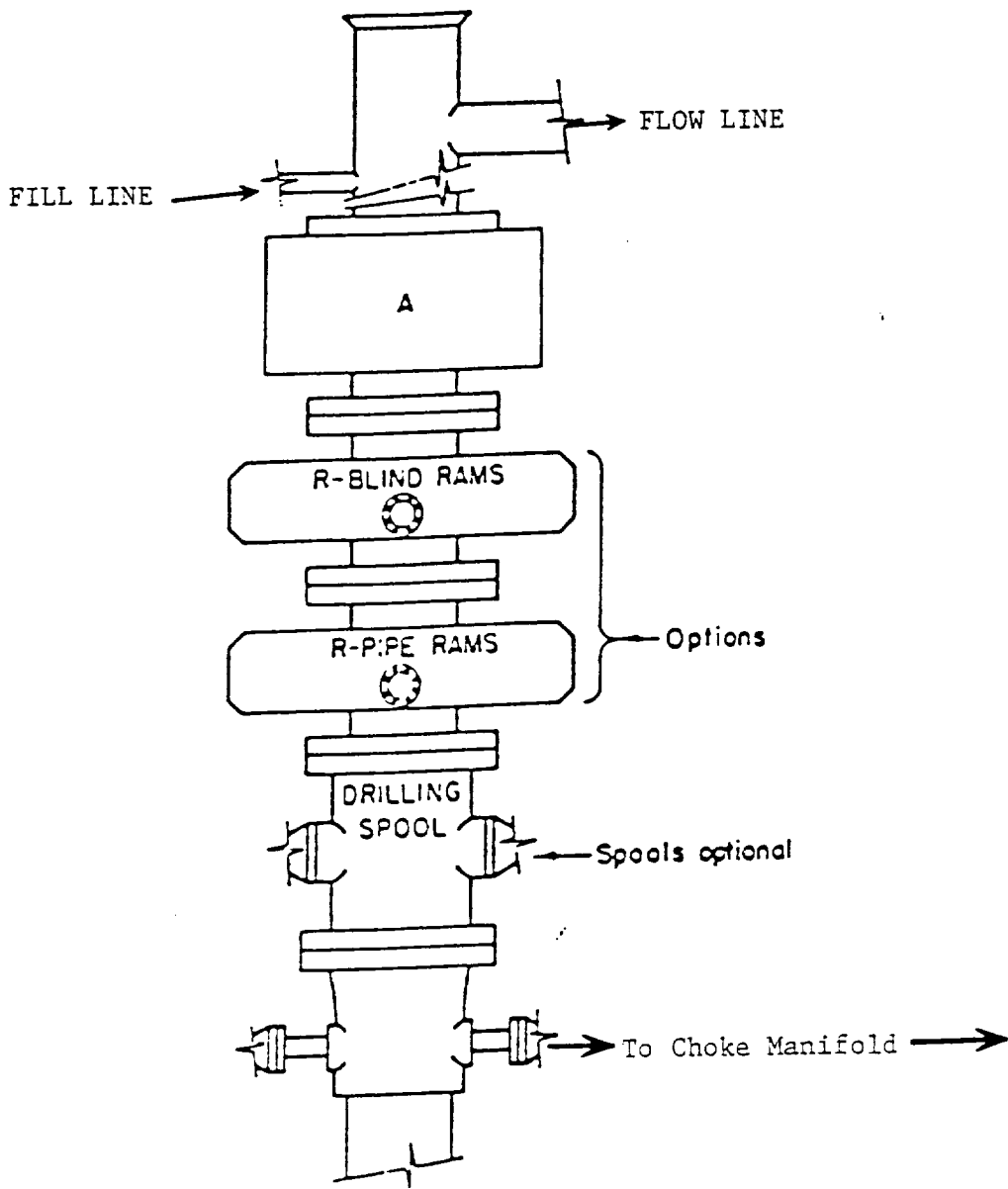
Joe T. Janica
Signature
Joe T. Janica
Printed Name
Agent
Title
04/01/98
Date

SURVEYOR CERTIFICATION

I hereby certify that the well location shown on this plat was plotted from field notes of actual surveys made by me or under my supervision, and that the same is true and correct to the best of my belief.

March 20, 1998
Date Surveyed

Gary L. Jones
Signature & Seal of
Professional Surveyor
7977
No. 8144d
Certification No. 8144d
7977
BASIN SURVEYS

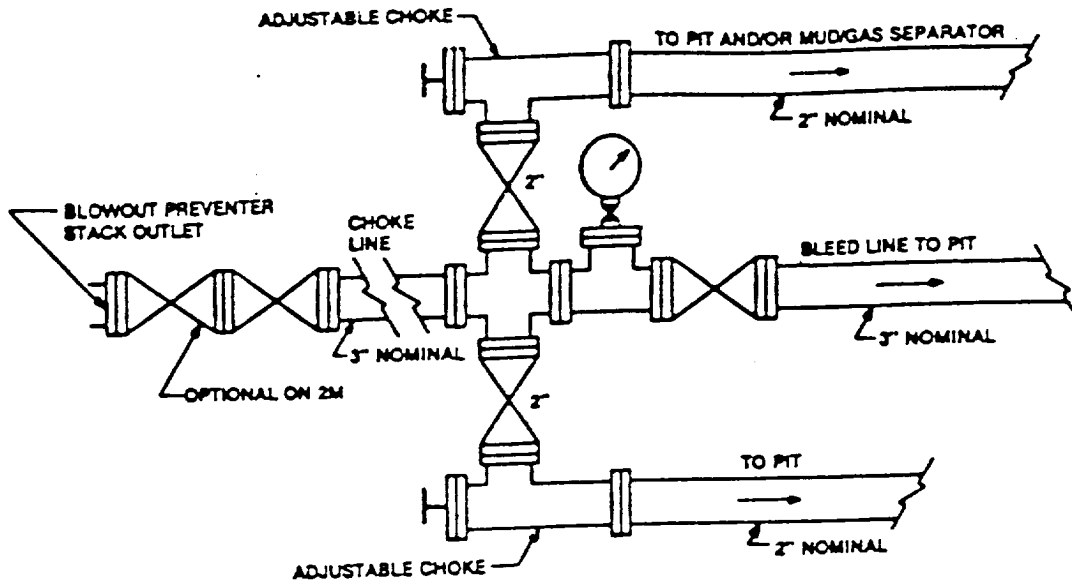


ARRANGEMENT SRRA

900 Series
3000 PSI WP

EXHIBIT "E"
B.O.P. SKETCH TO BE USED ON

PENWELL ENERGY, INC.
ANGEL "6" FEDERAL # 8
UNIT "D" SECTION 6
T20S-R28E EDDY CO. NM



Typical choke manifold assembly for 3M WP system

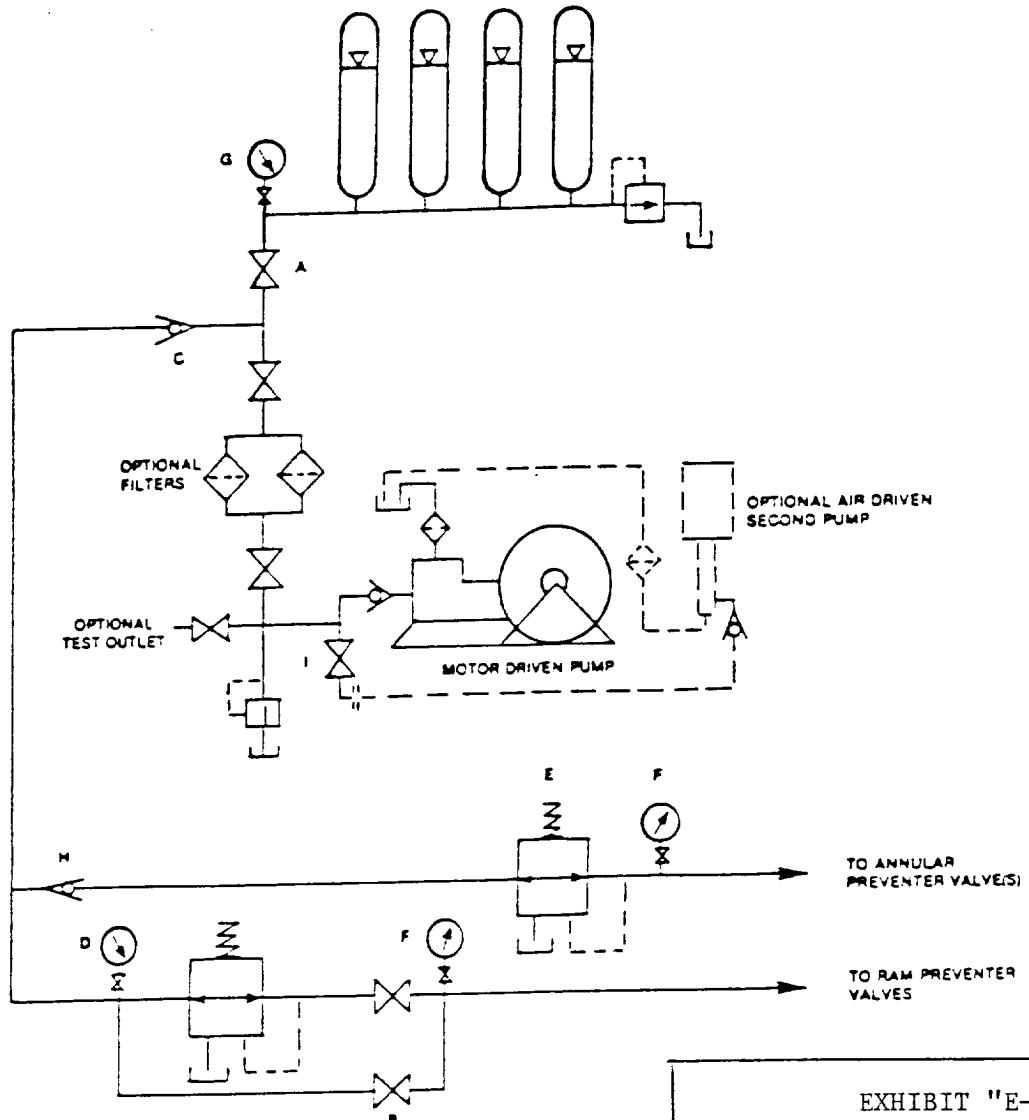


EXHIBIT "E-1"
CHOKE MANIFOLD & CLOSING UNIT

PENWELL ENERGY INC.
ANGEL "6" FEDERAL # 8
UNIT "D" SECTION 6
T20S-R28E EDDY CO. NM