

UNITED STATES
DEPARTMENT OF THE INTERIOR
BUREAU OF LAND MANAGEMENT

Oil Cons.
N.M. DIV-Dist. 2
1301 W. Grand Avenue
Artesia, NM 88210

FORM APPROVED
Budget Bureau No. 1004-0135
Expires March 31, 1993

SUNDRY NOTICES AND REPORTS ON WELLS

Do not use this form for proposals to drill or to deepen or reentry to a different reservoir.
Use "APPLICATION FOR PERMIT—" for such proposals

SUBMIT IN TRIPLICATE

1. Type of Well

☐ Oil Well ☒ Gas Well ☐ Other _____

2. Name of Operator

DEVON ENERGY PRODUCTION COMPANY, LP.

3. Address and Telephone No.

20 NORTH BROADWAY, SUITE 1100, OKLAHOMA CITY, OKLAHOMA 73102 (405) 228-7512

4. Location of Well (Footage, Sec., T., R., M., or Survey Description)

467' FSL, 660' FWL, SWSW, SEC 6, T22S, R26E

RECEIVED

MAY 06 2004

OCB-ARTESIA

5. Lease Designation and Serial No.

NMNM71752

6. If Indian, Allottee or Tribe Name

7. If Unit or CA, Agreement Designation

8. Well Name and No.

FEDERAL N 1

9. API Well No.

30-015-25965-00-S3

10. Field and Pool, or Exploratory Area

HAPPY VALLEY

11. County or Parish, State

EDDY, NM

CHECK APPROPRIATE BOX(s) TO INDICATE NATURE OF NOTICE, REPORT, OR OTHER DATA

TYPE OF SUBMISSION

- ☐ Notice of Intent
☒ Subsequent Report
☐ Final Abandonment Notice

TYPE OF ACTION

- ☒ Abandonment
☐ Recompletion
☐ Plugging Back
☐ Casing Repair
☐ Altering Casing
☐ Other _____

- ☐ Change of Plans
☐ New Construction
☐ Non-Routine Fracturing
☐ Water Shut-Off
☐ Conversion to Injection
☐ Dispose Water

(Note: Report results of multiple completion on Well Completion or Recompletion Report and Log form.)

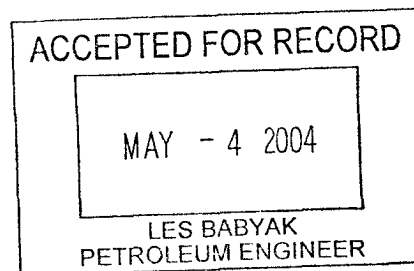
13. Describe Proposed or Completed Operations (Clearly state all pertinent details, and give pertinent dates, including estimated date of starting any proposed work. If well is directionally drilled, give subsurface locations and measured and true vertical depths for all markers and zones pertinent to this work.)*

1. Set CIBP @ 6460'. Dumped 40' cement on top.
2. Displaced hole with 9.5# mud.
3. Cut 5-1/2" casing at 4205'. Pulled casing.
4. Pumped 35 sx cement plug from 4134' to 4255'. Tagged plug at 4134'.
5. Pumped 65 sx cement plug at 2700'. Tagged cement at 2617'.
6. Pumped 50 sxs cement at 2617'. Tagged cement at 2484'.
7. Pumped 65 sxs cement at 556'. Tagged cement at 356'.
8. Pumped 20 sx cement plug from 60' to surface.
9. Cut casings off and installed dry hole marker. Clean location.
10. Well plugged and abandoned 4/22/04.

Accepted for record - NMOCD

Note: Cement class "C" at 14.8 ppg with a yield of 1.32 cu. ft/sx

Approved as to plugging of the well bore.
Liability under bond is retained until
surface restoration is completed.



14. I hereby certify that the foregoing is true and correct

Signed Ronnie Slack

Ronnie Slack

Title Engineering Technician

Date 4/28/04

(This space for Federal or State office use)

Approved by _____

Title _____

Date _____

Conditions of approval, if any:

DEVON ENERGY PRODUCTION COMPANY LP

Well Name: Federal N #1		Field: Happy Valley (Bone Spring)	
Location: Unit M, 660' FWL, 467' FSL, Sec 6-22S-26E		County: Eddy	State: NM
Elevation: 3595.4'		Spud Date: 9/4/88	Compl Date: 6/30/96 (Bone Spring)
API#: 30-015-25965	Prepared by: R Slack	Date: 2/1/04	Rev: 4/28/04

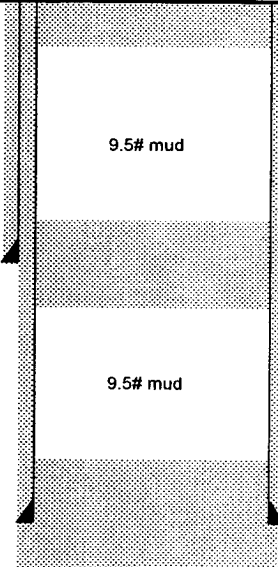
■ CURRENT

Lease Designation: NM-71752

17-1/2" hole
13-3/8", 54.5#, H40, @ 450'
 Cmt'd w/650 sx CI "C" to surface

casing noted at 64#/ft on sundry

12-1/4" hole
9-5/8", 36#, K55, @ 2590'
 Cmt'd W/ 1600 sx CI "C" to surface



Pumped 20 sx cement plug from surface to 60'
 Cut casings & installed dry hole marker.
 Well plugged and abandoned 4/22/04

Pumped 65 sx cement plug from
 356' to 556'. Cement tagged at 356'

Pumped 115 sx cement plug from
 2484' to 2700'. Cement tagged at 2484'

9.5# mud

TOC @ 4320' by CBL

Cement tagged at 4134'
 Pumped 35 sx cement plug from 4134' to 4255'

5-1/2" casing cut and pulled @ 4205'

9.5# mud

Bone Spring Perfs: 6507' - 6512' (6/4/96)
6516' - 6530' (6/4/96)
OIL WELL 6651' - 6658' (5/25/96)
6670' - 6681' (5/25/96)

DV Tool @ 9282'

Dumped 40' cement on top
 Set CIBP @ 6460'

PBD @ 9715'
 Capped w/ 35' cement
 CIBP @ 9750' (5/24/96)

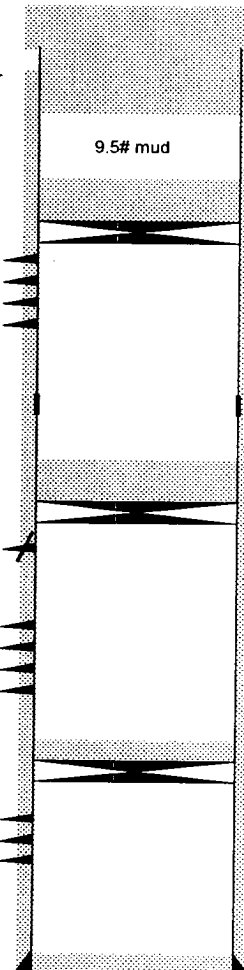
Canyon perfs: 9780' - 9808' (10/26/88)
 sqzd (Feb-94)

Atoka Perfs: 10264' - 10272' (2/3/94)
10512' - 10518' (5/17/96)
10522' - 10526' (5/17/96)
10543' - 10549' (5/17/96)

Capped w/ 35' cement
 CIBP @ 10950' (Feb-94)

Lower Morrow: 11008'-15'; 11070'-75'; 11122' - 24'
 (Feb-94) 11134' - 39'; 1150'-56'; 11291' - 96'
11333' - 39'; 11391' - 95'

8-3/4" hole
5-1/2", 17# & 20# K55 & N80 @ 11500'
 Cmt'd w/ 2620 sx CI H & Lite



TD @ 11,500'