

DISTRICT I
1625 N. French Dr., Hobbs, NM 88240

State of New Mexico
Energy, Minerals and Natural Resources Department

Form C-101
Revised March 17, 1999
Instructions on back

DISTRICT II
811 South First, Artesia, NM 88210

DISTRICT III
1000 Rio Brazos Rd., Aztec, NM 87410

DISTRICT IV
2040 South Pacheco, Santa Fe, NM 87500

OIL CONSERVATION DIVISION

PO BOX 2088

Santa Fe, NM 87504-2088

Submit to appropriate District Office

State Lease - 6 Copies

Fee Lease - 5 Copies

RECEIVED

DEC - 5 2003

OCD-ARTESIA

☐ AMENDED REPORT

APPLICATION FOR PERMIT TO DRILL, RE-ENTER, DEEPEN, PLUGBACK, OR ADD A ZONE

¹ Operator Name and Address Yates Petroleum Corporation 105 South Fourth Street Artesia, New Mexico 88210		² OGRID Number 025575
		³ API Number 30 30-005-62884
⁴ Property Code	⁵ Property Name Biplane SWD	⁶ Well No. 3

⁷ Surface Location

UL or lot no.	Section	Township	Range	Lot Idn	Feet from the	North/South Line	Feet from the	East/West Line	County
G	16	6S	27E		2310	North	1980	East	Chaves

⁸ Proposed Bottom Hole Location If Different From Surface

UL or lot no.	Section	Township	Range	Lot Idn	Feet from the	North/South Line	Feet from the	East/West Line	County
⁹ Proposed Pool 1					¹⁰ Proposed Pool 2				

¹¹ Work Type Code E	¹² Well Type Code S	¹³ Cable/Rotary R	¹⁴ Lease Type Code S	¹⁵ Ground Level Elevation 4110'
¹⁶ Multiple No	¹⁷ Proposed Depth 6535'	¹⁸ Formation Silurian	¹⁹ Contractor Not Determined	²⁰ Spud Date ASAP

²¹ Proposed Casing and Cement Program

Hole Size	Casing Size	Casing weight/feet	Setting Depth	Sacks of Cement	Estimated TOC
12 1/4"	8 5/8"	24#	530'-in place	315 sx	Circulate
7 7/8"	5 1/2"	15.5#	TD	600 sx	TOC-4000'

²² Describe the proposed program. If this application is to DEEPEN or PLUG BACK give the data on the present productive zone and proposed new productivity. Describe the blowout prevention program, if any. Use additional sheets if necessary.

See Attached Sheets for additional information. Administrative Order SWD-906.

²³ I hereby certify that the information given above is true and complete to the best of my knowledge and belief.

Signature:

Clifton R. May

Printed name:

Clifton R. May

Title:

Regulatory Agent

Date:

12/04/03

Phone:

(505) 748-1471

OIL CONSERVATION DIVISION

Approved by:

Title:

FOR RECORDS ONLY

Approval Date: JUN 07 2004

Expiration Date: JUN 07 2005

Conditions of Approval

Attached ☐

YATES PETROLEUM CORPORATION

Biplane SWD #1 Re-entry

2310' FNL & 1980' FEL

Section 16-T6S-R27E

Chaves County, New Mexico

Lease #VA-2494

API# 30-005-62884

Drilling Plans: McClellan Oil Corporation as the Pearl State #1 originally drilled this well. It was plugged and abandoned on 2-24-92. Yates Petroleum Corporation filed an APD to re-enter this well on 4/02/02 as the Vertigo AXV State #1 and it was approved on 5/09/02. The APD was withdrawn 2/19/03. Yates Petroleum Corporation plans to re-enter this well bore using a pulling unit and a reverse unit to drill out the cement plugs in the 8 5/8" casing and the 7 7/8" open hole to the old total depth of 6535'. A new suite of open hole logs may be run. After circulating the hole clean a string of 5 1/2" Casing will be ran to the total depth and cemented with enough cement to bring the top of cement to approximately 4,000'. The mud program to be used will be 9.5-9.7 ppg brine water with a 55-70 viscosity. A 3,000# BOPE will be installed on the 8 5/8" casing.

The well will be completed using a pulling unit. The well will be converted into a SWD well. The formation to be used as the disposal zone will be the Silurian perforated from 6,326' to 6,386'. Will run 2 7/8" plastic coated tubing with a nickel-plated packer set at approximately 6300'.

District I
1625 N. French Dr., Hobbs, NM 88240

District II
811 South First, Artesia, NM 88210

District III
1000 Rio Brazos Rd., Aztec, NM 87410

District IV
1220 S. St. Francis Dr., Santa Fe, NM 87505

State of New Mexico
Energy, Minerals & Natural Resources Department

OIL CONSERVATION DIVISION
1220 South St. Francis Dr.
Santa Fe, NM 87505

Form C-102
Revised August 15, 2000

Submit to Appropriate District Office
State Lease - 4 Copies
Fee Lease - 3 Copies

☐ AMENDED REPORT

WELL LOCATION AND ACREAGE DEDICATION PLAT

¹ API Number 30-005-62884	² Pool Code	³ Pool Name
⁴ Property Code	⁵ Property Name Biplane SWD	⁶ Well Number 1
⁷ OGRID No. 025575	⁸ Operator Name Yates Petroleum Corporation	⁹ Elevation 4110'

¹⁰ Surface Location

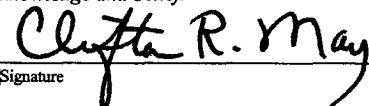
UL or lot no. G	Section 16	Township 6S	Range 27E	Lot Idn	Feet from the 2310	North/South line North	Feet from the 1980	East/West line East	County Chaves
---------------------------	----------------------	-----------------------	---------------------	---------	------------------------------	----------------------------------	------------------------------	-------------------------------	-------------------------

¹¹ Bottom Hole Location If Different From Surface

UL or lot no.	Section	Township	Range	Lot Idn	Feet from the	North/South line	Feet from the	East/West line	County
---------------	---------	----------	-------	---------	---------------	------------------	---------------	----------------	--------

¹² Dedicated Acres	¹³ Joint or Infill	¹⁴ Consolidation Code	¹⁵ Order No.
-------------------------------	-------------------------------	----------------------------------	-------------------------

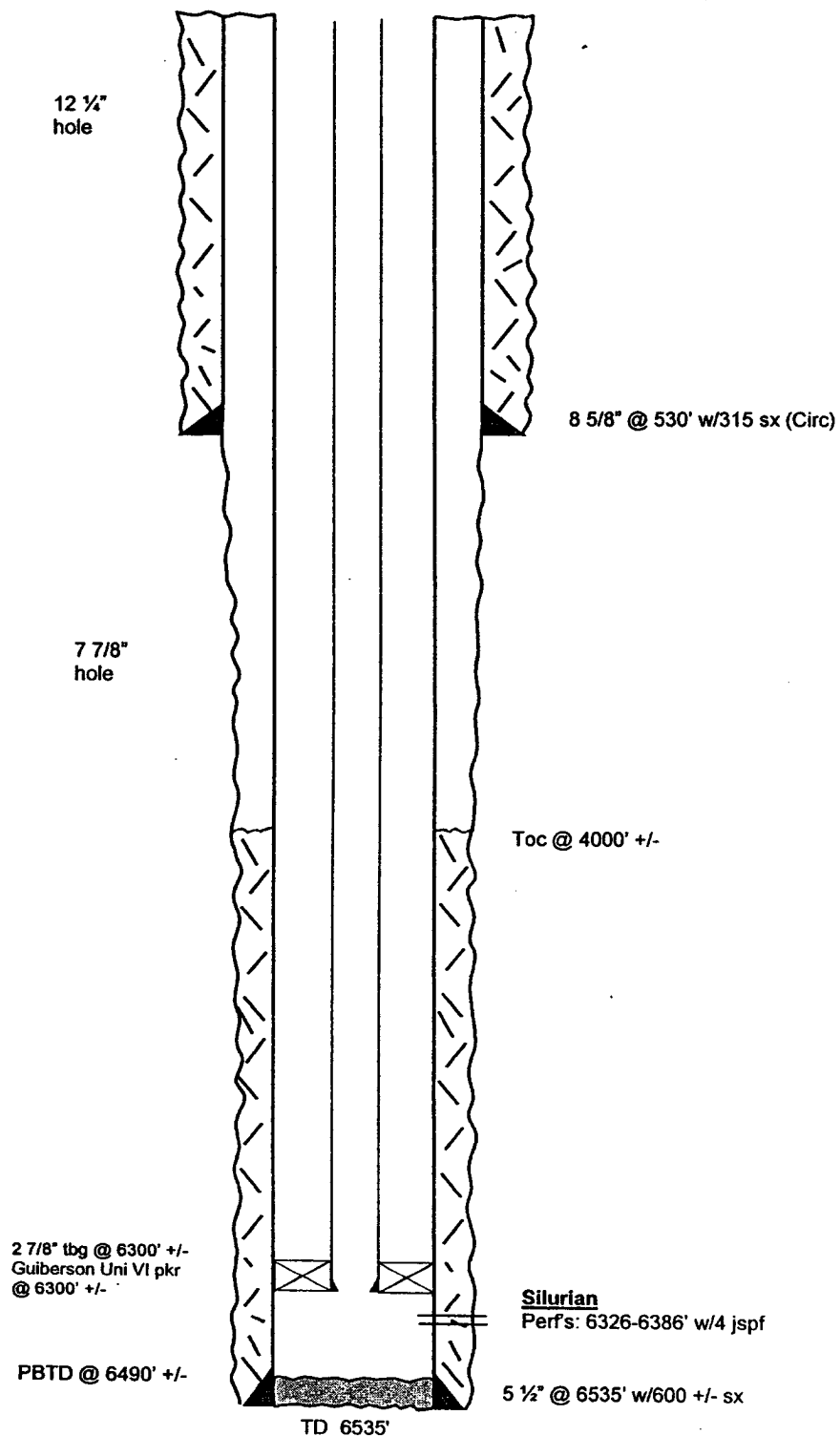
NO ALLOWABLE WILL BE ASSIGNED TO THIS COMPLETION UNTIL ALL INTERESTS HAVE BEEN CONSOLIDATED OR A
NON-STANDARD UNIT HAS BEEN APPROVED BY THE DIVISION

¹⁶			2310'			¹⁷ OPERATOR CERTIFICATION <i>I hereby certify that the information contained herein is true and complete to the best of my knowledge and belief.</i>  Signature Clifton R. May Printed Name Regulatory Agent Title 12/04/03 Date
						¹⁸ SURVEYOR CERTIFICATION <i>I hereby certify that the well location shown on this plat was plotted from field notes of actual surveys made by me or under my supervision, and that the same is true and correct to the best of my belief.</i> Refer to Original Plat Date of Survey Signature and Seal of Professional Surveyor:

WELL NAME: Vertigo AVX State Com #1 FIELD: Wildcat
 LOCATION: 2310' FNL & 1980' FEL Sec 16 T6S-R27E Chaves County
 GL: 4110' ZERO: KB: 4122'
 SPUD DATE: 2/3/92 COMPLETION DATE:
 COMMENTS: 30-005-62884

CASING PROGRAM

8 5/8" 24.0# J-55 ST&C	530'
5 1/2" 15.5# J-55 LT&C	6535'
2 7/8" plastic coated tbg	6300' +/-



Proposed

TOPS

Glorieta	2502'
Abo	4580'
Wolfcamp	5256'
Cisco	5812'
Strawn	5956'
Miss	6200'
Silurian	6310'
Pre-Camb	6446'

Not to Scale
 9/29/03
 Cam