

Submit To Appropriate District Office
State Lease - 6 copies
Fee Lease - 5 copies

District I
1625 N. French Dr., Hobbs, NM 88240
District II
1301 W. Grand Avenue, Artesia, NM 88210
District III
1000 Rio Brazos Rd., Aztec, NM 87410
District IV
1220 S. St. Francis Dr., Santa Fe, NM 87505

State of New Mexico
Energy, Minerals and Natural Resources

Oil Conservation Division
1220 South St. Francis Dr.
Santa Fe, NM 87505

Form C-105
Revised March 25, 1999

WELL API NO.
30-015-32888

5. Indicate Type of Lease
STATE ☐ FEE ☒
State Oil & Gas Lease No

WELL COMPLETION OR RECOMPLETION REPORT AND LOG

1a. Type of Well:
OIL WELL ☐ GAS WELL ☒ DRY ☐ OTHER _____
b. Type of Completion:
NEW ☐ WORK ☐ DEEPEN ☐ PLUG ☒ DIFF.
WELL OVER BACK RESVR. ☒ OTHER

2. Name of Operator
Mewbourne Oil Company 14744

3. Address of Operator
PO Box 5270
Hobbs, NM 88240

7. Lease Name or Unit Agreement Name

Otis 1

RECEIVED

8. Well No.

#2

MAY 21 2004

000-ARTESIA

9. Pool name or Wildcat

Tanzill DAM; Atoka, East
92274

DHC - 3296

4. Well Location

Unit Letter K: 1980 Feet From The South Line and 1400 Feet From The West Line

Section 1 Township 22S Range 27E NMPM Eddy County

10. Date Spudded 10/03/03 Date T.D Reached 11/02/03 12. Date Compl. (Ready to Prod.) 1/09/04 13. Elevations (DF& RKB, RT, GR, etc.) 3089' GL 14. Elev. Casinghead 3089'

15. Total Depth 12200' 16. Plug Back T.D. 11482' 17. If Multiple Compl. How Many Zones? 18. Intervals Drilled By Rotary Tools X Cable Tools

19. Producing Interval(s), of this completion - Top, Bottom, Name 11166-11436 Atoka 20. Was Directional Survey Made

21. Type Electric and Other Logs Run 21. Was Well Cored

23. CASING RECORD (Report all strings set in well)

CASING SIZE	WEIGHT LB./FT.	DEPTH SET	HOLE SIZE	CEMENTING RECORD	AMOUNT PULLED

24. LINER RECORD				25. TUBING RECORD			
SIZE	TOP	BOTTOM	SACKS CEMENT	SCREEN	SIZE	DEPTH SET	PACKER SET
					2 7/8"	11041'	11025'

26. Perforation record (interval, size, and number)
11166'-436' (76 holes, 38', 2 SPF, 21.5" Penetration, 0.41" EHD, 23 GC and 120 Phasing)

27. ACID, SHOT, FRACTURE, CEMENT, SQUEEZE, ETC.
DEPTH INTERVAL AMOUNT AND KIND MATERIAL USED
11166'-436' Acidized Atoka w/10,000 gals 20% NeFe acid and ball sealers.

28. PRODUCTION

Date First Production 04/09/04 Production Method (Flowing, gas lift, pumping - Size and type pump) Flowing Well Status (Prod. or Shut-in) Producing

Date of Test 04/24/04 Hours Tested 24 Choke Size 10/64 Prod'n For Test Period Oil - Bbl 0 Gas - MCF 2013 Water - Bbl. 1 Gas - Oil Ratio 201300

Flow TP 2050 Casing Pressure 0 Calculated 24-Hour Rate Oil - Bbl. 0 Gas - MCF 2013 Water - Bbl. 1 Oil Gravity - API - (Corr.) 51.0

29. Disposition of Gas (Sold, used for fuel, vented, etc.) Sold Test Witnessed By Leonard Pounds

30. List Attachments
C104, Logs and Deviation Survey

31. I hereby certify that the information shown on both sides of this form as true and complete to the best of my knowledge and belief

Printed Name: NM Young

Signature

Title District Manager

Date 05/19/04

INSTRUCTIONS

This form is to be filed with the appropriate District Office of the Division not later than 20 days after the completion of any newly-drilled or deepened well. It shall be accompanied by one copy of all electrical and radio-activity logs run on the well and a summary of all special tests conducted, including drill stem tests. All depths reported shall be measured depths. In the case of directionally drilled wells, true vertical depths shall also be reported. For multiple completions, items 25 through 29 shall be reported for each zone. The form is to be filed in quintuplicate except on state land, where six copies are required. See Rule 1105.

INDICATE FORMATION TOPS IN CONFORMANCE WITH GEOGRAPHICAL SECTION OF STATE

Southeastern New Mexico

C. Reef		T. Canyon	
T. Salt	580	T. Strawn	10453
B. Salt	1664	T. Atoka	11930
Lamar Limestone	2173	T. Miss	
T. 7 Rivers		T. Devonian	
T. Queen		T. Silurian	
T. Grayburg		T. Montoya	
T. San Andres		T. Simpson	
T. Glorieta		T. McKee	
T. Paddock		T. Ellenburger	
T. Blinebry		T. Gr. Wash	
T. Tubb		T. Delaware Sand	2264
T. Drinkard		T. Bone Springs	5542
T. Abo		T. Morrow	11829
T. Wolfcamp	9063	T. Barnett	12034
T. Penn		T. TD	12200
T. Cisco (Bough C)		T.	

Northwestern New Mexico

T. Ojo Alamo	T. Penn. "B"
T. Kirtland-Fruitland	T. Penn. "C"
T. Pictured Cliffs	T. Penn. "D"
T. Cliff House	T. Leadville
T. Menefee	T. Madison
T. Point Lookout	T. Elbert
T. Mancos	T. McCracken
T. Gallup	T. Ignacio Otztze
Base Greenhorn	T. Granite
T. Dakota	T.
T. Morrison	T.
T. Todilto	T.
T. Entrada	T.
T. Wingate	T.
T. Chinle	T.
T. Permian	T.
T. Penn "A"	T.

OIL OR GAS SANDS OR ZONES

No. 1, from.....to.....
No. 2, from.....to.....

No. 3, from.....to.....
No. 4, from.....to.....

IMPORTANT WATER SANDS

Include data on rate of water inflow and elevation to which water rose in hole.

No. 1, from.....to.....feet.....
 No. 2, from.....to.....feet.....
 No. 3, from.....to.....feet.....

LITHOLOGY RECORD (Attach additional sheet if necessary)

From	To	Thickness In Feet	Lithology

From	To	Thickness In Feet	Lithology

DISTRICT I
1685 N. French Dr., Hobbs, NM 88240
DISTRICT II
811 South First, Artesia, NM 88210
DISTRICT III
1000 Rio Brazos Rd., Aztec, NM 87410
DISTRICT IV
2040 South Pacheco, Santa Fe, NM 87505

State of New Mexico
Energy, Minerals and Natural Resources Department

Form C-102
Revised March 17, 1999
Instruction on back
Submit to Appropriate District Office
State Lease - 4 Copies
Fee Lease - 3 Copies

OIL CONSERVATION DIVISION
P.O. Box 2088
Santa Fe, New Mexico 87504-2088

RECEIVED

MAY 21 2004

WELL LOCATION AND ACREAGE DEDICATION PLAT

000-ARTESIA

API Number 30-015-32888	Pool Code	Pool Name Undes Atoka
Property Code	Property Name OTIS "1"	Well Number 2
OGED No. 14744	Operator Name MEWBORNE OIL COMPANY	Elevation 3086

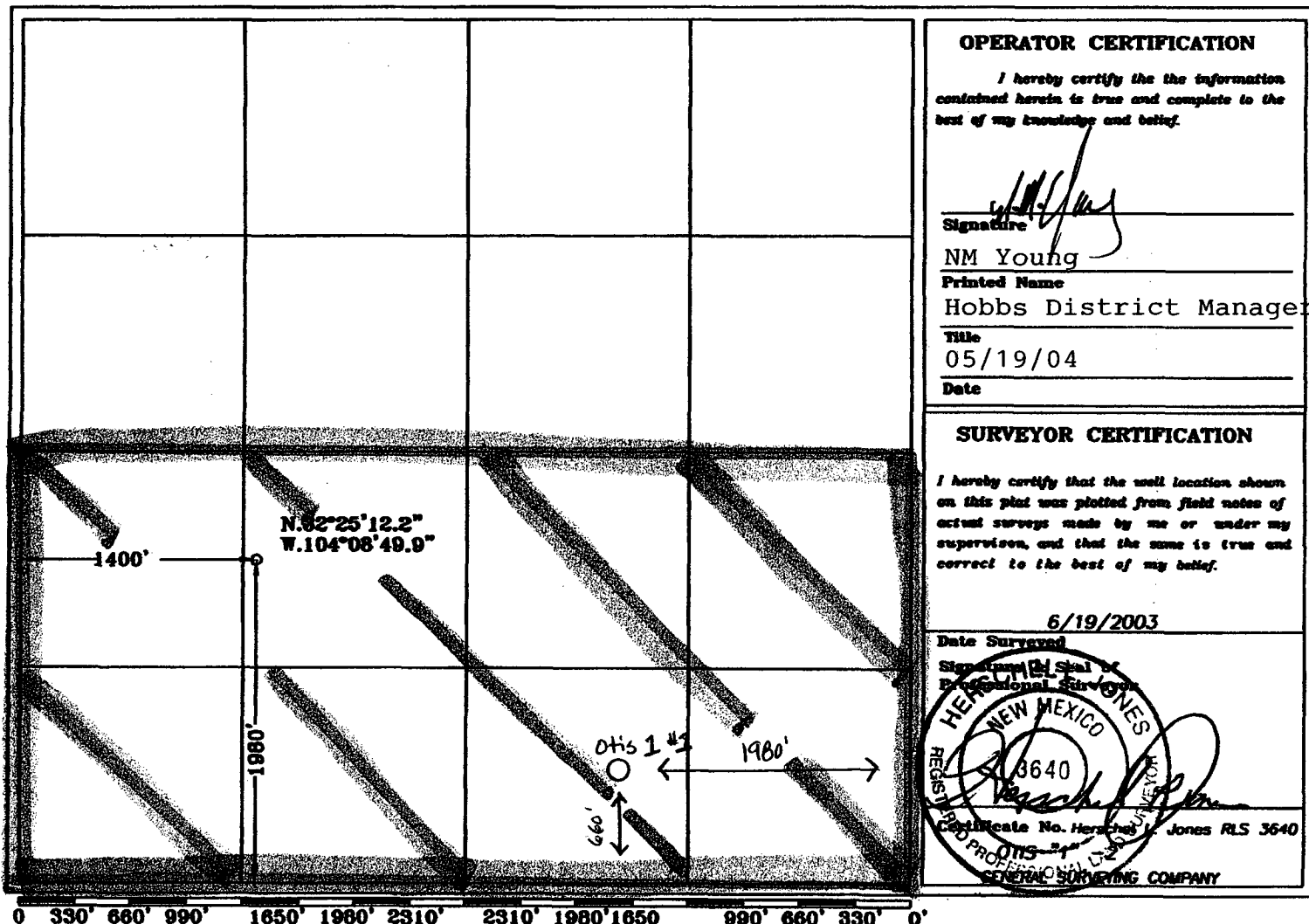
Surface Location

UL or lot No.	Section	Township	Range	Lot Idn	Feet from the	North/South line	Feet from the	East/West line	County
K	1	22S	27E		1980	SOUTH	1400	WEST	EDDY

Bottom Hole Location If Different From Surface

UL or lot No.	Section	Township	Range	Lot Idn	Feet from the	North/South line	Feet from the	East/West line	County
320									
Dedicated Acres	Joint or Infill	Consolidation Code	Order No.						

NO ALLOWABLE WILL BE ASSIGNED TO THIS COMPLETION UNTIL ALL INTERESTS HAVE BEEN CONSOLIDATED
OR A NON-STANDARD UNIT HAS BEEN APPROVED BY THE DIVISION



Arrant, Bryan

From: midgeo@mewbourne.com
Sent: Monday, June 14, 2004 11:58 AM
To: binsalaco@mewbourne.com
Cc: barrant@state.nm.us; lcunningham@mewbourne.com; midgeo@mewbourne.com; myoung@mewbourne.com
Subject: Mewbourne, Otis 1-2, Down hole commingling

I visited this A.M. with Bryan Arrant w/New Mexico ? OCD regarding the formation tops in our Otis 2-1. He informed me that the official tops for the Atoka & Morrow formations have been designated in a nearby well, the Delta (Champlain), Pecos Fed 1-1 located 2700' north of the Otis 2-1. They are as follows in the Pecos Fed 1-1 and the Otis 2-1

	Pecos Fed 1-1	Otis 2-1
T/Atoka	10,728	10,740
T/Morrow	11,269	11,282

Thus I agree with Bryan's contention that the perforations 11,313-23 & 11,422-36 in the Otis 1-2 are in what has been designated as Morrow and the perforations 11,166-74 & 11,222-31 are in what has been designated as Atoka and that we should pursue a down hole commingling permit in our well.

mburke

Mewbourne Oil Company
500 W. Texas Ave., Ste. 1020
Midland, TX. 79701-4279

Of.#: 432-682-3715
Fx.#: 432-685-4170 - Office
Fx.#: 432-683-3902 - Log
Hm.#: 432-689-4877
Mb.#: 432-770-4882
mburke@mewbourne.com

This email has been scanned by the MessageLabs Email Security System.
For more information please visit <http://www.messagelabs.com/email>
