

Submit 3 Copies To Appropriate District
Office
District I
1625 N. French Dr., Hobbs, NM 88240
District II
1301 W. Grand Ave., Artesia, NM 88210
District III
1000 Rio Brazos Rd., Aztec, NM 87410
District IV
1220 S. St. Francis Dr., Santa Fe, NM
87505

State of New Mexico
Energy, Minerals and Natural Resources

OIL CONSERVATION DIVISION
1220 South St. Francis Dr.
Santa Fe, NM 87505

Form C-103
Revised March 25, 1999

WELL API NO.
30-015-33534

5. Indicate Type of Lease
STATE ☐ FEE ☒

6. State Oil & Gas Lease No.

7. Lease Name or Unit Agreement
Name:

Pecos River 9

8. Well No.
#1

9. Pool name or Wildcat
Carlsbad South Morrow

SUNDRY NOTICES AND REPORTS ON WELLS

(DO NOT USE THIS FORM FOR PROPOSALS TO DRILL OR TO DEEPEN OR PLUG BACK TO A
DIFFERENT RESERVOIR. USE "APPLICATION FOR PERMIT" (FORM C-101) FOR SUCH
PROPOSALS.)

1. Type of Well:

Oil Well ☐ Gas Well ☒ Other ☐

2. Name of Operator

Mewbourne Oil Company 14744

3. Address of Operator

PO Box 5270 Hobbs, NM 88241

4. Well Location

Unit Letter I : 1650 feet from the South line and 990 feet from the East line

Section 9 Township 22S Range 27E NMPM Eddy County

10. Elevation (Show whether DR, RKB, RT, GR, etc.)
3077' GL

11. Check Appropriate Box to Indicate Nature of Notice, Report or Other Data

NOTICE OF INTENTION TO:

PERFORM REMEDIAL WORK ☐ PLUG AND ABANDON ☐

TEMPORARILY ABANDON ☐ CHANGE PLANS ☐

PULL OR ALTER CASING ☐ MULTIPLE COMPLETION ☐

OTHER:

SUBSEQUENT REPORT OF:

REMEDIAL WORK ☐ ALTERING CASING ☐

COMMENCE DRILLING OPNS. ☐ PLUG AND ABANDONMENT ☐

CASING TEST AND CEMENT JOB ☒

OTHER:

12. Describe proposed or completed operations. (Clearly state all pertinent details, and give pertinent dates, including estimated date of starting any proposed work). SEE RULE 1103. For Multiple Completions: Attach wellbore diagram of proposed completion or recompilation.

08/11/04...MI & spud 17 1/2" hole. TD'd hole @ 533'. Ran 533' 13 3/4" 48# H40 ST&C csg. Cemented with 275 sks 35:65:6 Poz C with additives. Mixed @ 12.5 #/g with 1.98 yd. Tailed with 200 sks Class C with 2% CaCl2. Mixed @ 14.8 #/g with 1.34 yd. Circ 100 sks to pit. WOC 18 hrs. At 3:30 pm, test BOPE and 13 3/4" casing to 1000# for 30 mins, held OK. Drilled out with 12 1/4" bit.

08/20/04...TD'd 12 1/4" hole @ 4034' (received permission from OCD/Brian Arrant from 4500' to 4034'). Ran 4034' 9 3/4" 40# HCK55/S95 LT&C csg. Cement with 1600 sks 35:65:6 Poz C with additives. Mixed @ 12.5 ppg, yield 1.98 cu.ft/sk. Tail with 200 sks Class "C" with 2% CaCl2. Mixed @ 14.8 ppg, yield 1.32 cu.ft/sk. Circ 150 sks cmt to pit. WOC 18 hrs. At 10:00 am 08/21/04, test BOPE as required to 5000# and annular to 2500#. All equipment passed. Charts and schematic attached. At 9:30 pm 08/21/04, test csg to 1500#, held OK. Drilled out with 8 3/4" bit.

change setting depth

for 30"

I hereby certify that the information above is true and complete to the best of my knowledge and belief.

SIGNATURE Kristi Green TITLE Hobbs Regulatory DATE 08/23/04

Type or print name Kristi Green

Telephone No. 505-393-5905

(This space for State use)

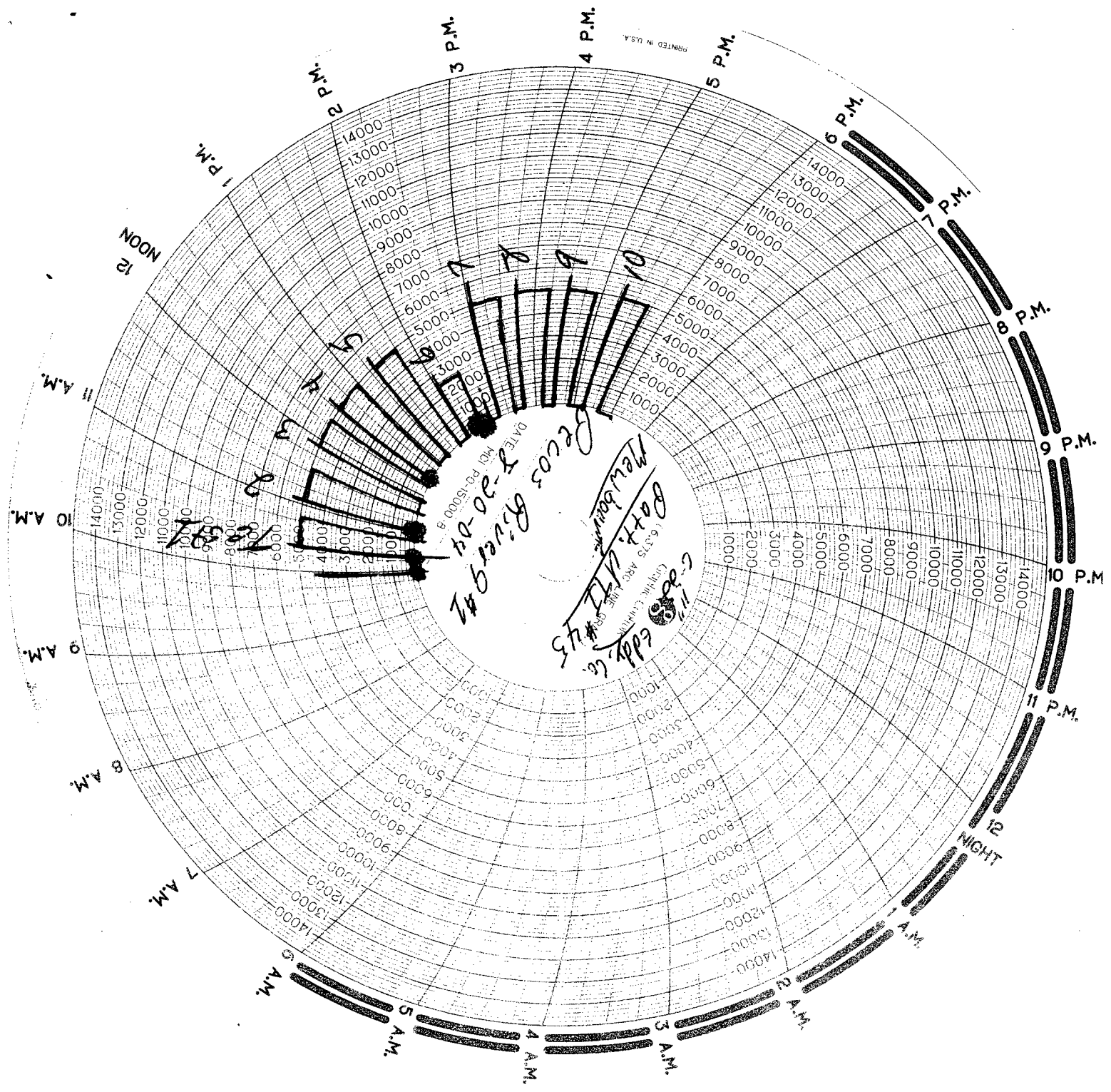
APPROVED BY FOR RECORDS ONLY TITLE

Conditions of approval, if any:

AUG 24 2004
DATE

RECEIVED
AUG 24 2004
OCD-ARTERIA

PRINTED IN U.S.A.



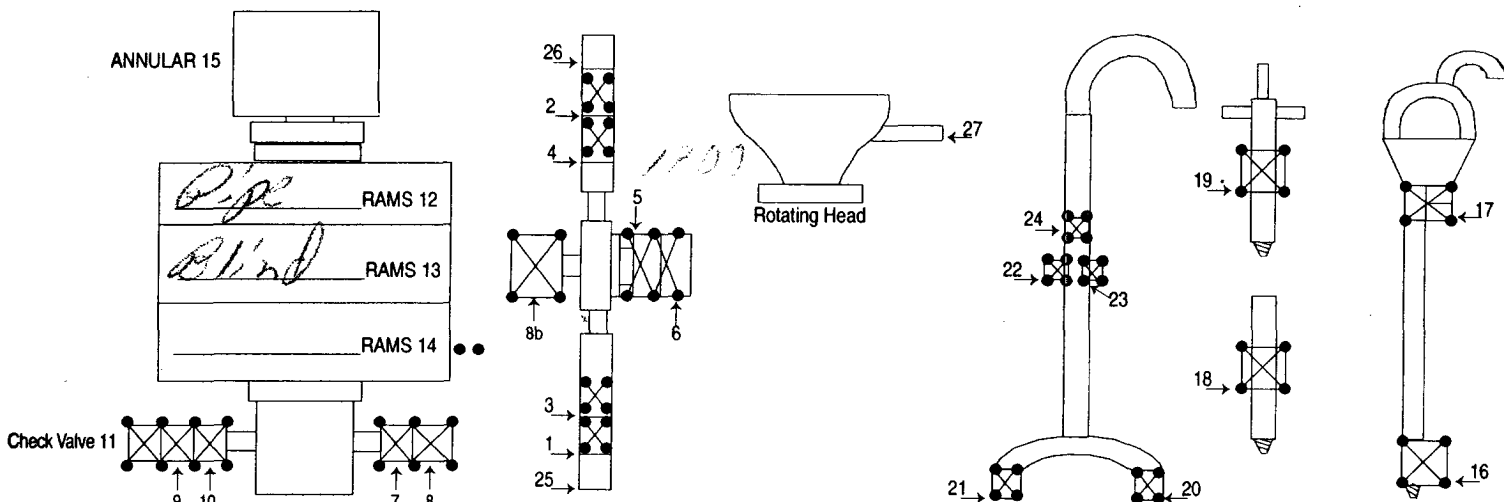
DATE 5-30-44
Becos River
Bath. Lt. #43
C-200
Eddy, Co.
Graphic Engineer

BUS: 505 396-4540 • **FAX:** 505 396-0044



B 2818

Casing Valve Opened Yes Check Valve Open Yes



TEST #	ITEMS TESTED	TEST LENGTH	LOW PSI	HIGH PSI	REMARKS
1	25, 26, 6, 9, 13	10 Min.		5000	Had to tighten
2	1, 2, 5, 10, 13	100		5000	Misc. Flanges OK
3	3, 4, 5, 10, 13	10		5000	
4	8, 11, 12	10		5000	
5	7, 11, 12	10		5000	
6	2, 11, 15	10		2500	
7	18	10		5000	
8	16	10		5000	
9	17	10		5000	
10	19	10		5000	
					#8 Is HCR Valve.
					#25 Is Super Choke.

Mileage _____ @ _____

TOTAL 987.38

Newbourne

8-20-04

Eddy, Co.

Path UTH #45

11" C-22

ASC Rev. 06/02

Accumulator Function Test - OO&GO#2

To Check - **USABLE FLUID IN THE NITROGEN BOTTLES** (III.A.2.c.i. or ii or iii)

- Make sure all rams and annular are open and if applicable HCR is closed.
- Ensure accumulator is pumped up to working pressure! (**Shut off all pumps**)
 1. Open HCR Valve. (If applicable)
 2. Close annular.
 3. Close **all** pipe rams.
 4. Open one set of the pipe rams to simulate closing the blind ram.
 5. For 3 ram stacks, open the annular to achieve the 50±% safety factor. (5M and greater systems).
 6. **Record remaining pressure 1900 psi. Test Fails if pressure is lower than required.**
 - a. {950 psi for a 1500 psi system}
 - b. {1200 psi for a 2000 & 3000 psi system}
 7. If annular is closed, open it at this time and close HCR.

To Check - **PRECHARGE ON BOTTLES OR SPHERICAL** (III.A.2.d.)

- Start with manifold pressure at, or above, maximum acceptable pre-charge pressure:
 - a. {800 psi for a 1500 psi system}
 - b. {1100 psi for 2000 and 3000 psi system}
- 1. Open bleed line to the tank, slowly. (**gauge needle will drop at the lowest bottle pressure**)
- 2. Close bleed line. Barely bump electric pump and see what pressure the needle jumps up to.
- 3. **Record pressure drop 1000 psi. Test fails if pressure drops below minimum.**
- **Minimum:** a. {700 psi for a 1500 psi system} b. {900 psi for a 2000 & 3000 psi system}

To check - **THE CAPACITY OF THE ACCUMULATOR PUMPS** (III.A.2.f.)

- Isolate the accumulator bottles or spherical from the pumps & manifold.
- Open the bleed off valve to the tank, {manifold psi should go to 0 psi} close bleed valve.
 1. Open the HCR valve, {if applicable}
 2. Close annular.
 3. With **pumps** only, time how long it takes to regain the required manifold pressure.
 4. **Record elapsed time 1:54/secs.. Test fails if it takes over 2 minutes.**
 - a. {950 psi for a 1500 psi system}
 - b. {1200 psi for a 2000 & 3000 psi system}

Accumulator working pressure rating	Minimum acceptable operating pressure	Desired precharge pressure	Maximum acceptable precharge pressure	Minimum acceptable precharge pressure
1,500 psi	1,500 psi	750 psi	800 psi	700 psi
2,000 psi	2,000 psi	1,000 psi	1,100 psi	900 psi
3,000 psi	3,000 psi	1,000 psi	1,100 psi	900 psi

CEMENT JOB REPORT



30-015-33534

CUSTOMER Mawbourne Oil Co		DATE 19-AUG-04	F.R. # 272011291	SERV. SUPV. JAMIE C JONES			
LEASE & WELL NAME PECOS RIVER 9 # 1		LOCATION S7-T22S-R27E		COUNTY-PARISH-BLOCK Eddy New Mexico			
DISTRICT Artesia		DRILLING CONTRACTOR RIG # PATTERSON # 45		TYPE OF JOB Intermediate			
SIZE & TYPE OF PLUGS		LIST-CSG-HARDWARE		PHYSICAL SLURRY PROPERTIES			
Cement Plug, Rubber, Top 9-5/8 in	Float Shoe 9-5/8 - 8rd	SACKS OF CEMENT	SLURRY WGT PPG	SLURRY YLD FT ³	WATER GPS	PUMP TIME HR:MIN	Bbl SLURRY
	Float Collar, AI Flap, 9-5/8 - 8rd						Bbl MIX WATER
MATERIALS FURNISHED BY BJ							
(35-65-6)"C"+1%CACL2+1/4#CF+5#LCM-1		1,600	12.5	1.98	10.27		564
"C"+2%CACL2		200	14.8	1.32	6.32		47
H2O DISPLACEMENT			8.34				303
Available Mix Water 1000 Bbl.		Available Displ. Fluid 500 Bbl.		TOTAL			914
							421.17
HOLE		TBG-CSG-D.P.				COLLAR DEPTHS	
SIZE	% EXCESS	DEPTH	SIZE	WGT.	TYPE	DEPTH	GRADE
12.25		4035	9.625	40	CSG	4041	K-55
						4041	3990.83
							0
LAST CASING		PKR-CMT RET-BR PL-LINER		PERF. DEPTH		TOP CONN	
SIZE	WGT	TYPE	DEPTH	TOP	BTM	SIZE	THREAD
						9.625	8RD
		NO PACKER		0		WATER BASED MU	
						10	
DISPL. VOLUME		DISPL. FLUID		CAL. PSI		CAL. MAX PSI	
VOLUME	UOM	TYPE	WGT.	BUMP PLUG	TO REV.	SQ. PSI	RATED
303	BBLs	H2O DISPLACEMENT	8.34	948	0	0	0
						3950	
						3160	
						RIG	

EXPLANATION: TROUBLE SETTING TOOL, RUNNING CSG, ETC. PRIOR TO CEMENTING: NONE

PRESSURE/RATE DETAIL						EXPLANATION	
TIME HR:MIN.	PRESSURE - PSI		RATE BPM	Bbl. FLUID PUMPED	FLUID TYPE	SAFETY MEETING: BJ CREW <input checked="" type="checkbox"/> CO. REP. <input type="checkbox"/>	
	PIPE	ANNULUS				TEST LINES	4000 PSI
						CIRCULATING WELL - RIG	<input checked="" type="checkbox"/> BJ <input type="checkbox"/>
11:53	248	0	6	10	H2O	SPACER	
12:11	450	0	6	564	12.5#CMT	LEAD	
14:00	200	0	2	47	14.8#CMT	TAIL	
14:39	0	0	0	0	0	SHUT DOWN DROP PLUG	
14:40	1483	0	9	293	H2O	DISPLACE WASH ON TOP OF PLUG	
15:15	1050	0	3	10	H2O	SLOW	
15:20	1357	0	0	0	H2O	PLUG DOWN	
						CIRCULATED 150 SX TO PIT	
						THANK YOU JAMIE AND CREW...	

BUMPED PLUG	PSI TO BUMP PLUG	TEST FLOAT EQUIP.	BBL.CMT RETURNS/ REVERSED	TOTAL BBL PUMPED	PSI LEFT ON CSG	SPOT TOP OUT CEMENT	SERVICE SUPERVISOR SIGNATURE
<input checked="" type="checkbox"/> Y <input type="checkbox"/> N	1630	<input checked="" type="checkbox"/> Y <input type="checkbox"/> N	53	924	0	<input checked="" type="checkbox"/> Y <input type="checkbox"/> N	

John Blackwood

- Newbourne

8-20-04

Eddy, Co.

Path 1171 #45

11" C-22

ASC Rev. 06/02

Accumulator Function Test - OO&GO#2

To Check - USABLE FLUID IN THE NITROGEN BOTTLES (III.A.2.c.i. or ii or iii)

- Make sure all rams and annular are open and if applicable HCR is closed.
- Ensure accumulator is pumped up to working pressure! (Shut off all pumps)
 1. Open HCR Valve. (If applicable)
 2. Close annular.
 3. Close **all** pipe rams.
 4. Open one set of the pipe rams to simulate closing the blind ram.
 5. For 3 ram stacks, open the annular to achieve the 50±% safety factor. (5M and greater systems).
 6. Record remaining pressure 1900 psi. Test Fails if pressure is lower than required.
 - a. {950 psi for a 1500 psi system } b. { 1200 psi for a 2000 & 3000 psi system }
 7. If annular is closed, open it at this time and close HCR.

To Check - PRECHARGE ON BOTTLES OR SPHERICAL (III.A.2.d.)

- Start with manifold pressure at, or above, maximum acceptable pre-charge pressure:
 - a. {800 psi for a 1500 psi system } b. {1100 psi for 2000 and 3000 psi system }
- 1. Open bleed line to the tank, slowly. (gauge needle will drop at the lowest bottle pressure)
 2. Close bleed line. Barely bump electric pump and see what pressure the needle jumps up to.
 3. Record pressure drop 1000 psi. Test fails if pressure drops below minimum.
- Minimum: a. {700 psi for a 1500 psi system } b. {900 psi for a 2000 & 3000 psi system }

To check - THE CAPACITY OF THE ACCUMULATOR PUMPS (III.A.2.f.)

- Isolate the accumulator bottles or spherical from the pumps & manifold.
- Open the bleed off valve to the tank, {manifold psi should go to 0 psi} close bleed valve.
 1. Open the HCR valve, {if applicable}
 2. Close annular.
 3. With **pumps** only, time how long it takes to regain the required manifold pressure.
 4. Record elapsed time 1:41 sec. Test fails if it takes over 2 minutes.
- a. {950 psi for a 1500 psi system } b. {1200 psi for a 2000 & 3000 psi system }

Accumulator working pressure rating	Minimum acceptable operating pressure	Desired precharge pressure	Maximum acceptable precharge pressure	Minimum acceptable precharge pressure
1,500 psi	1,500 psi	750 psi	800 psi	700 psi
2,000 psi	2,000 psi	1,000 psi	1,100 psi	900 psi

