

DISTRICT I
1625 N. French Dr., Hobbs, NM 88240

DISTRICT II
811 South First, Artesia, NM 88210

DISTRICT III
1000 Rio Brazos Rd., Aztec, NM 87410

DISTRICT IV
2040 South Pacheco, Santa Fe, NM 87505

State of New Mexico
Energy, Minerals and Natural Resources Department

Form C-10
Revised March 17, 199

Submit to Appropriate District Office
State Lease - 4 Copie
Fee Lease - 3 Copie

OIL CONSERVATION DIVISION

2040 South Pacheco
Santa Fe, New Mexico 87504-2088

☐ AMENDED REPORT

30-015-33851
WELL LOCATION AND ACREAGE DEDICATION PLAT

API Number	Pool Code	Pool Name
Property Code	Property Name STATE CW	Well Number 2
OGRID No. 6137	Operator Name DEVON ENERGY PRODUCTION CO., L.P.	Elevation 3310'

Surface Location

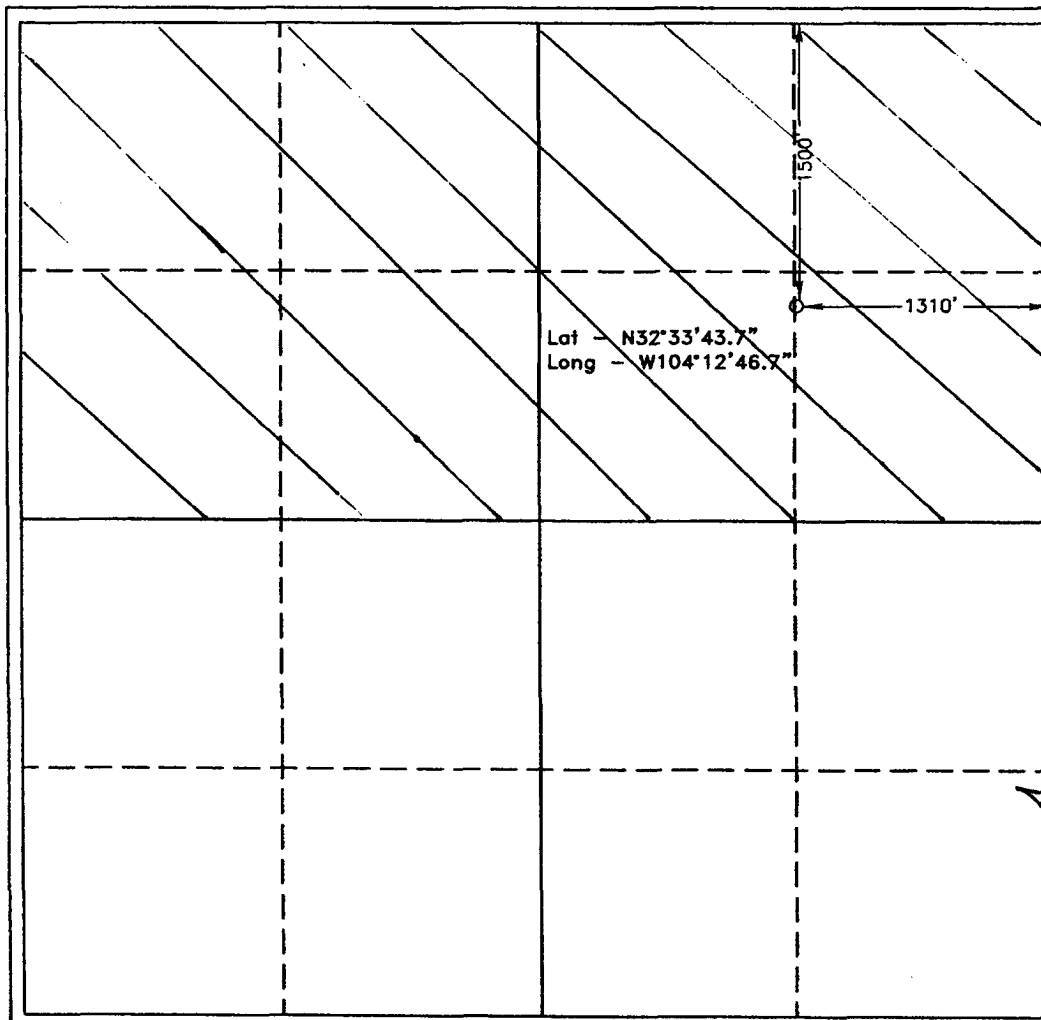
UL or lot No.	Section	Township	Range	Lot Idn	Feet from the	North/South line	Feet from the	East/West line	County
H	19	20 S	28 E		1500	NORTH	1310	EAST	EDDY

Bottom Hole Location If Different From Surface

UL or lot No.	Section	Township	Range	Lot Idn	Feet from the	North/South line	Feet from the	East/West line	County

Dedicated Acres 320	Joint or Infill	Consolidation Code	Order No.
------------------------	-----------------	--------------------	-----------

NO ALLOWABLE WILL BE ASSIGNED TO THIS COMPLETION UNTIL ALL INTERESTS HAVE BEEN CONSOLIDATED
OR A NON-STANDARD UNIT HAS BEEN APPROVED BY THE DIVISION



OPERATOR CERTIFICATION

I hereby certify the the information
contained herein is true and complete to the
best of my knowledge and belief.

Linda Guthrie
Signature
Linda Guthrie
Printed Name
Regulatory Specialist
Title
12/16/04
Date

SURVEYOR CERTIFICATION

I hereby certify that the well location shown
on this plat was plotted from field notes of
actual surveys made by me or under my
supervision, and that the same is true and
correct to the best of my belief.

SEPTEMBER 17, 2004

Date Surveyed
Signature & Seal of
Professional Surveyor
[Signature]
NEW MEXICO
W.O. No. 4658
Certificate No. Gary L. Jones 7977
REGISTERED PROFESSIONAL LAND SURVEYOR