

EC

DE
BUF

If earthen pits are used in
association with the drilling of the
well, an OCD pit permit must be
obtained prior to pit construction

ARTESIA

FORM APPROVED
OMB No. 1004-0136
Expires November 30, 2000

APPLICATION FOR PERMIT TO DRILL OR REENTER

1a. Type of Work: ☒ DRILL ☐ REENTER

CONFIDENTIAL

1b. Type of Well: ☒ Oil Well ☐ Gas Well ☐ Other ☒ Single Zone ☐ Multiple Zone2. Name of Operator BASS ENTERPRISES PRODUCTION CO
Contact: CINDI GOODMAN
E-Mail: cdgoodman@basspet.com3a. Address
P O BOX 2760
MIDLAND, TX 797023b. Phone No. (include area code)
Ph: 432.683.2277
Fx: 432.687.03294. Location of Well (Report location clearly and in accordance with any State requirements. *)
At surface NWSE Lot J 1980FSL 1980FEL 32.12568 N Lat, 103.55069 W Lon
At proposed prod. zone NWSE Lot J 1980FSL 1980FEL 32.12568 N Lat, 103.55069 W Lon14. Distance in miles and direction from nearest town or post office*
14 MILES EAST OF MALAGA NM
SECRETARY'S POTASH15. Distance from proposed location to nearest property or
lease line, ft. (Also to nearest drig. unit line, if any)
330016. No. of Acres in Lease
2520.6818. Distance from proposed location to nearest well, drilling,
completed, applied for, on this lease, ft.
118719. Proposed Depth
7650 MD
7650 TVD21. Elevations (Show whether DF, KB, RT, GL, etc.)
3176 GL22. Approximate date work will start
06/01/20045. Lease Serial No.
NMNM02860

6. If Indian, Allottee or Tribe Name

7. If Unit or CA Agreement, Name and No.
NMNM71016X8. Lease Name and Well No.
POKER LAKE UNIT 2119. API Well No.
30-015-3385810. Field and Pool, or Exploratory
NASH DRAW-DELAWARE11. Sec., T., R., M., or Blk. and Survey or Area
Sec 18 T24S R30E Mer NMP
SME: BLM12. County or Parish
EDDY13. State
NM17. Spacing Unit dedicated to this well
40.00

20. BLM/BIA Bond No. on file

23. Estimated duration
12 DAYS

24. Attachments

CARLSBAD CONTROLLED WATER BASIN

The following, completed in accordance with the requirements of Onshore Oil and Gas Order No. 1, shall be attached to this form:

- Well plat certified by a registered surveyor.
- A Drilling Plan.
- A Surface Use Plan (if the location is on National Forest System Lands, the SUPO shall be filed with the appropriate Forest Service Office).

- Bond to cover the operations unless covered by an existing bond on file (see Item 20 above).
- Operator certification
- Such other site specific information and/or plans as may be required by the authorized officer.

25. Signature
(Electronic Submission)Name (Printed/Typed)
CINDI GOODMANDate
05/03/2004Title
AUTHORIZED REPRESENTATIVE

Approved by (Signature)

Name (Printed/Typed)

Date
14 JUL 2004Title
ACTING STATE DIRECTOROffice
NM STATE OFFICEApplication approval does not warrant or certify the applicant holds legal or equitable title to those rights in the subject lease which would entitle the applicant to conduct operations thereon.
Conditions of approval, if any, are attached.

APPROVAL FOR 1 YEAR

Title 18 U.S.C. Section 1001 and Title 43 U.S.C. Section 1212, make it a crime for any person knowingly and willfully to make to any department or agency of the United States any false, fictitious or fraudulent statements or representations as to any matter within its jurisdiction.

Additional Operator Remarks (see next page)

RECEIVED

Electronic Submission #30154 verified by the BLM Well Information System
For BASS ENTERPRISES PRODUCTION CO, sent to the Carlsbad
Committed to AFMSS for processing by LINDA ASKWIG on 05/03/2004 (04LA0381AE)

JUL 20 2004

OCD-ARTESIA

APPROVAL SUBJECT TO
GENERAL REQUIREMENTS
AND SPECIAL STIPULATIONS
ATTACHED ** BLM REVISED ** BLM REVISED ** BLM REVISED ** BLM REVISED ** BLM REVISED **

Witness Surface Casing

Additional Operator Remarks:

Surface casing to be set into Rustler below all fresh water sands.
Production casing will be cemented using Zone Seal Cement.
Drilling Procedure, BOP Diagram, Anticiapted tops & surface plans attached.

This well is located outside the Secretary's Potash area and outside the R-111 Potash area.
There are no potash leases within 1 mile of this location.

DISTRICT I

1035 N. French Dr., Hobbs, NM 88240

DISTRICT II

811 South First, Artesia, NM 88210

DISTRICT III

1000 Rio Brazos Rd., Aztec, NM 87410

DISTRICT IV

2040 South Pacheco, Santa Fe, NM 87505

State of New Mexico

Energy, Minerals and Natural Resources Department

Form C-102

Revised March 17, 1999

Submit to Appropriate District Office

State Lease - 4 Copies

Fee Lease - 3 Copies

OIL CONSERVATION DIVISION

2040 South Pacheco

Santa Fe, New Mexico 87504-2088

☐ AMENDED REPORT

WELL LOCATION AND ACREAGE DEDICATION PLAT

API Number	Pool Code 47545	Pool Name NASH DRAW (DELAWARE)
Property Code 001796	Property Name POKER LAKE UNIT	Well Number 211
OGRIID No. 001801	Operator Name BASS ENTERPRISES PRODUCTION COMPANY	Elevation 3176'

Surface Location

UL or lot No.	Section	Township	Range	Lot Idn	Feet from the	North/South line	Feet from the	East/West line	County
J	18	24 S	30 E		1980	SOUTH	1980	EAST	EDDY

Bottom Hole Location If Different From Surface

UL or lot No.	Section	Township	Range	Lot Idn	Feet from the	North/South line	Feet from the	East/West line	County
Dedicated Acres 40	Joint or Infill N	Consolidation Code	Order No.						

NO ALLOWABLE WILL BE ASSIGNED TO THIS COMPLETION UNTIL ALL INTERESTS HAVE BEEN CONSOLIDATED
OR A NON-STANDARD UNIT HAS BEEN APPROVED BY THE DIVISION

LOT 1 - 40.80 AC.	40.83 AC.	40.82 AC.	40.83 AC.
LOT 2 - 40.85 AC.	40.81 AC.	40.79 AC.	40.79 AC.
LOT 3 - 40.80 AC.	40.80 AC.	<div style="border: 1px solid black; padding: 5px;"> 40.77 AC. 3164.5' 3175.5' LAT - N32°12'58.8" LONG - W103°55'06.9" 3162.4' 3180.9' 1980' </div>	40.72 AC.
LOT 4 - 40.84 AC.	40.77 AC.	40.74 AC.	40.69 AC.

OPERATOR CERTIFICATION

I hereby certify that the information contained herein is true and complete to the best of my knowledge and belief.

William R. Dannels
Signature

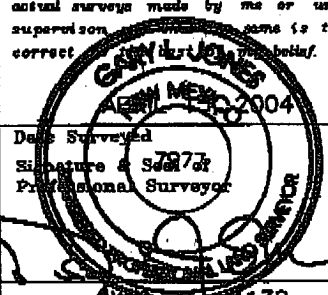
W.R. DANNELS
Printed Name

DIVISION DRILLING SUPT.
Title

4/30/04
Date

SURVEYOR CERTIFICATION

I hereby certify that the well location shown on this plat was plotted from field notes of actual surveys made by me or under my supervision and are true and correct.

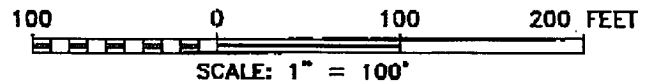
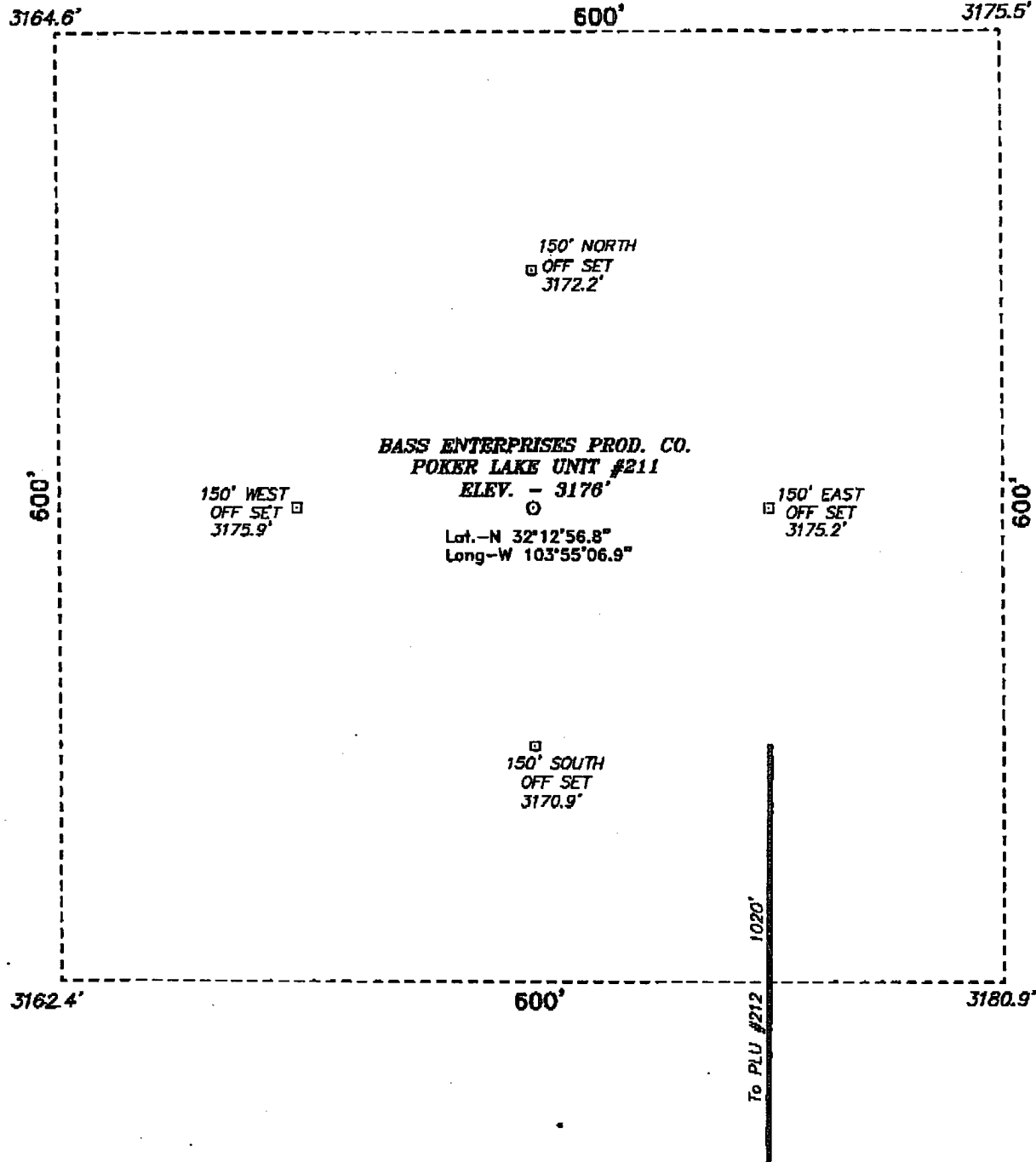

Date Surveyed
Signature & Seal
Professional Surveyor

W.C. No. 4138

Certificate No. Gary L. Jones 7977

BASIN SURVEYS

**SECTION 18, TOWNSHIP 24 SOUTH, RANGE 30 EAST, N.M.P.M.,
EDDY COUNTY, NEW MEXICO.**



BASS ENTERPRISES PRODUCTION CO.

REF: POKER LAKE UNIT No. 211 / Well Pad Topo

THE POKER LAKE UNIT No. 211 LOCATED 1980' FROM
THE SOUTH LINE AND 1980' FROM THE EAST LINE OF
SECTION 18, TOWNSHIP 24 SOUTH, RANGE 30 EAST,
N.M.P.M., EDDY COUNTY, NEW MEXICO.

BASIN SURVEYS P.O. BOX 1786-HOBBS, NEW MEXICO

W.O. Number: 4138 Drawn By: K. GOAD

Date: 04-23-2004 Disk: KJG CD#7 - 4138A.DWG

Survey Date: 04-15-2004 Sheet 1 of 1 Sheets

**EIGHT POINT DRILLING PROGRAM
BASS ENTERPRISES PRODUCTION CO.**

NAME OF WELL: Poker Lake Unit #211

LEGAL DESCRIPTION - SURFACE: 1980' FSL & 1980' FEL, Section 18, T-24-S, R-30-E, Eddy County, New Mexico.

POINT 1: ESTIMATED FORMATION TOPS

(See No. 2 Below)

POINT 2: WATER, OIL, GAS AND/OR MINERAL BEARING FORMATIONS

Anticipated Formation Tops: KB 3194' (est) GL 3176'

<u>FORMATION</u>	<u>ESTIMATED TOP FROM KB</u>	<u>ESTIMATED SUBSEA TOP</u>	<u>BEARING</u>
T/Rustler	469'	+2725	Barren
T/Salt	747'	+2447'	Barren
T/Lwr Brushy Canyon "8" A	6979'	-3785'	Oil/Gas
T/Bone Spring	7256'	-4062'	Oil/Gas
TD	7650'	-4456'	

POINT 3: CASING PROGRAM

<u>TYPE</u>	<u>INTERVALS</u>	<u>PURPOSE</u>	<u>CONDITION</u>
16" WITNESS	0' - 40'	Conductor	Contractor Discretion
8-5/8", 28#, J-55, LT&C	0' - 700'	Surface	New
5-1/2", 15.5#, J-55, LT&C	0' - 6500'	Production	New
5-1/2", 17#, J-55, LT&C	6500' - 7650'	Production	New

POINT 4: PRESSURE CONTROL EQUIPMENT (SEE ATTACHED DIAGRAM)

A BOP equivalent to Diagram 1 will be nipped up on the surface casing head. The BOP stack choke, kill lines, kelly cocks, inside BOP, etc. will be hydro-tested to 70% of internal yield pressure of casing. In addition to the high pressure test, a low pressure (200 psi) test will be required. These tests will be performed:

- Upon installation
- After any component changes
- Fifteen days after a previous test
- As required by well conditions

A function test to insure that the preventers are operating correctly will be performed on each trip.

POINT 5: MUD PROGRAM

DEPTH	MUD TYPE	WEIGHT	FV	PV	YP	FL	Ph
0' - 700'	FW Spud Mud	8.5 - 9.2	70-38	NC	NC	NC	10.0
700' - 5600'	Brine Water	9.8 - 10.2	28-30	NC	NC	NC	9.5-10.5
5600' - TD'	Brine Water/Diesel	8.8 - 9.0	32-40	8	2	<25 cc	9.5 - 10.0

*May increase vis for logging purposes only.

POINT 6: TECHNICAL STAGES OF OPERATION**A) TESTING**

None anticipated.

B) LOGGING

GR-CNL-LDT-AIT from TD to base of Salt (+/- 3200').
GR-CNL-CAL from base of Salt to surface.

C) CONVENTIONAL CORING

None anticipated.

D) CEMENT

INTERVAL	AMOUNT SXS	FT OF FILL	TYPE	GALS/SX	PPG	FT ³ /SX	COMPRESSIVE	
SURFACE:							Nitrogen	Strength
Lead 0 - 400' (100% excess circ to surface)	250	400	Pemian Basin Critical Zone + 1/2# Flocele	10.4	12.8	1.90		
Tail 400'-700' (100% excess circ to surface)	200	300	Prem Plus + 2% CaCl ₂ + 1/2# Flocele	6.33	14.8	1.35		
PRODUCTION:								
Base Slurry w/nitrogen 2981-7650' + (50% excess)	753	4669	Premium Plus + 2% Zone Sealant 2000	6.32	9.1-14.5	2.3-1.39	300/600 scf/bbl	1200

E) DIRECTIONAL DRILLING

No directional services anticipated.

POINT 7: ANTICIPATED RESERVOIR CONDITIONS

Normal pressures are anticipated throughout Delaware section. A BHP of 3285 psi (max) or MWE of 8.7 ppg is expected. Lost circulation may exist in the Delaware Section from 3481-7256'. No H₂S is anticipated.

POINT 8: OTHER PERTINENT INFORMATION**A) Auxiliary Equipment**

Upper and lower kelly cocks. Full opening stab in valve on the rig floor.

B) Anticipated Starting Date

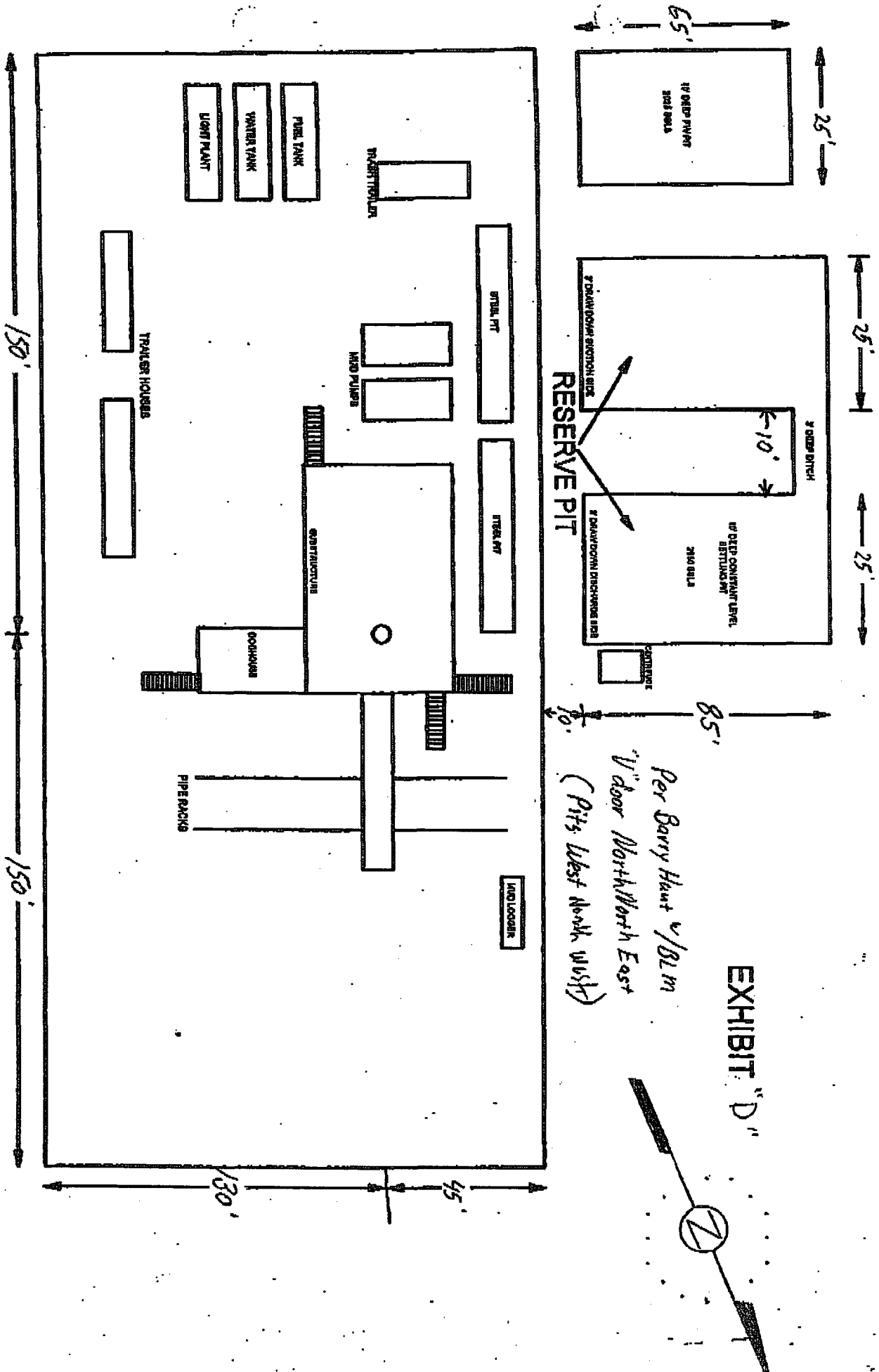
Upon approval

12 days drilling operations

14 days completion operations

BGH/cdg

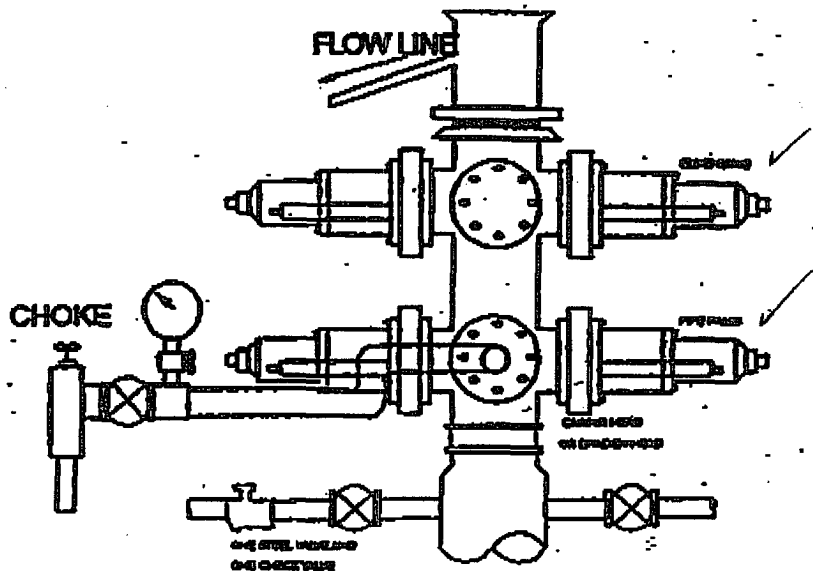
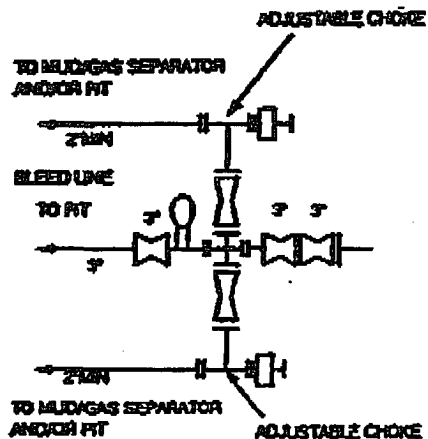
April 30, 2004



Per Barry Hunt 1/8/11
 "V" door North/West East
 (Pits West North West)

Poker Lake Unit #211

2000 PSI WP



THE FOLLOWING CONSTITUTE MINIMUM BLOWOUT PREVENTER REQUIREMENTS

- A. One double gate blowout preventer with lower rams for pipe and upper rams blind, all hydraulically controlled.
- B. Opening on preventers between rams to be flanged, studded or clamped and at least two inches in diameter.
- C. All connections from operating manifold to preventers to be all steel hose or tube a minimum of one inch in diameter.
- D. The available closing pressure shall be at least 15% in excess of that required with sufficient volume to operate (close, open, and re-close) the preventers.
- E. All connections to and from preventers to have a pressure rating equivalent to that of the BOP's.
- F. Manual controls to be installed before drilling cement plug.
- G. Valve to control flow through drill pipe to be located on rig floor.
- H. All chokes will be adjustable. Choke spool may be used between rams.