

EC

DEPAF  
BUREA

If earthen pits are used in  
association with the drilling of this  
well, an OCD pit permit must be  
obtained prior to pit construction.

## APPLICATION FOR PERMIT TO DRILL OR REENTER

FORM APPROVED  
OMB No. 1004-0136  
Expires November 30, 20001a. Type of Work: ☒ DRILL ☐ REENTER

CONFIDENTIAL

5. Lease Serial No.  
NMNM02860

6. If Indian, Allottee or Tribe Name

7. If Unit or CA Agreement, Name and No.  
NMNM71016X8. Lease Name and Well No.  
POKER LAKE UNIT 213

9. API Well No.

30-015-33859

10. Field and Pool, or Exploratory  
NASH DRAW-DELAWARE

11. Sec., T., R., M., or Blk. and Survey or Area

Sec 18 T24S R30E Mer NMP  
SME: BLM12. County or Parish  
EDDY13. State  
NM

17. Spacing Unit dedicated to this well

40.00

20. BLM/BIA Bond No. on file

23. Estimated duration  
12 DAYS

## 24. Attachments

CARLSBAD CONTROLLED WATER BASIN

The following, completed in accordance with the requirements of Onshore Oil and Gas Order No. 1, shall be attached to this form:

1. Well plat certified by a registered surveyor.
2. A Drilling Plan.
3. A Surface Use Plan (if the location is on National Forest System Lands, the SUPO shall be filed with the appropriate Forest Service Office).

4. Bond to cover the operations unless covered by an existing bond on file (see Item 20 above).
5. Operator certification
6. Such other site specific information and/or plans as may be required by the authorized officer.

25. Signature  
(Electronic Submission)Name (Printed/Typed)  
CINDI GOODMANDate  
09/28/2004Title  
AUTHORIZED REPRESENTATIVE

Approved by (Signature)

Name (Printed/Typed)

Date

Janice L. Gamby

Janice L. Gamby

2 DEC 2004

Title  
ACTING STATE DIRECTOR

Office

NM STATE OFFICE

Application approval does not warrant or certify the applicant holds legal or equitable title to those rights in the subject lease which would entitle the applicant to conduct operations thereon.

Conditions of approval, if any, are attached.

APPROVAL FOR 1 YEAR

Title 18 U.S.C. Section 1001 and Title 43 U.S.C. Section 1212, make it a crime for any person knowingly and willfully to make to any department or agency of the United States any false, fictitious or fraudulent statements or representations as to any matter within its jurisdiction.

## Additional Operator Remarks (see next page)

Electronic Submission #36755 verified by the BLM Well Information System

For BASS ENTERPRISES PRODUCTION CO, sent to the Carlsbad

Committed to AFMSS for processing by LINDA ASKWIG on 09/29/2004 (04LA0868AE)

APPROVAL SUBJECT TO  
GENERAL REQUIREMENTS  
AND SPECIAL STIPULATIONS  
ATTACHED

\*\* BLM REVISED \*\* BLM REVISED \*\* BLM REVISED \*\* BLM REVISED \*\* BLM REVISED \*\*

**Additional Operator Remarks:**

Surface casing to be set into Rustler below all fresh water sands.  
Production casing will be cemented using Zone Seal Cement.  
Drilling Procedure, BOP Diagram, Anticiapted tops & surface plans attached.

This well is located inside the Secretary's Potash area and outside the R-111 Potash area.  
There are no potash leases within 1 mile of this location.

## DISTRICT I

1626 N. French Dr., Hobbs, NM 88240

## DISTRICT II

811 South First, Artesia, NM 88210

## DISTRICT III

1000 Rio Brazos Rd., Aztec, NM 87410

## DISTRICT IV

2040 South Pacheco, Santa Fe, NM 87505

## State of New Mexico

Energy, Minerals and Natural Resources Department

Form C-102

Revised March 17, 1999

Submit to Appropriate District Office

State Lease - 4 Copies

Fee Lease - 3 Copies

## OIL CONSERVATION DIVISION

2040 South Pacheco

Santa Fe, New Mexico 87504-2088

☐ AMENDED REPORT

## WELL LOCATION AND ACREAGE DEDICATION PLAT

API Number	Pool Code 47545	Pool Name NASH DRAW (DELAWARE)
Property Code 001796	Property Name POKER LAKE UNIT	Well Number 213
OGRID No. 001801	Operator Name BASS ENTERPRISES PRODUCTION COMPANY	Elevation 3198'

## Surface Location

UL or lot No.	Section	Township	Range	Lot Idn	Feet from the	North/South line	Feet from the	East/West line	County
P	18	24 S	30 E		860	SOUTH	660	EAST	EDDY

## Bottom Hole Location if Different From Surface

UL or lot No.	Section	Township	Range	Lot Idn	Feet from the	North/South line	Feet from the	East/West line	County

Dedicated Acres 40	Joint or Infill N	Consolidation Code	Order No.
-----------------------	----------------------	--------------------	-----------

NO ALLOWABLE WILL BE ASSIGNED TO THIS COMPLETION UNTIL ALL INTERESTS HAVE BEEN CONSOLIDATED  
OR A NON-STANDARD UNIT HAS BEEN APPROVED BY THE DIVISION

LOT 1 - 40.80 AC.	40.83 AC.	40.82 AC.	40.83 AC.
LOT 2 - 40.85 AC.	40.81 AC.	40.79 AC.	40.79 AC.
LOT 3 - 40.80 AC.	40.80 AC.	40.77 AC.	40.72 AC.
LOT 4 - 40.84 AC.	40.77 AC.	40.74 AC.	40.69 AC.

LAT - N32°12'45.8"  
LONG - W103°54'51.6"

3183.9' 3202.5'  
3180.5' 3185.5'  
660' 660'

**OPERATOR CERTIFICATION**

I hereby certify the information contained herein is true and complete to the best of my knowledge and belief.

*William R. Dannels*  
Signature  
W.R. DANNELS  
Printed Name  
DIVISION DRILLING SUPT.  
Title  
9/27/2004  
Date

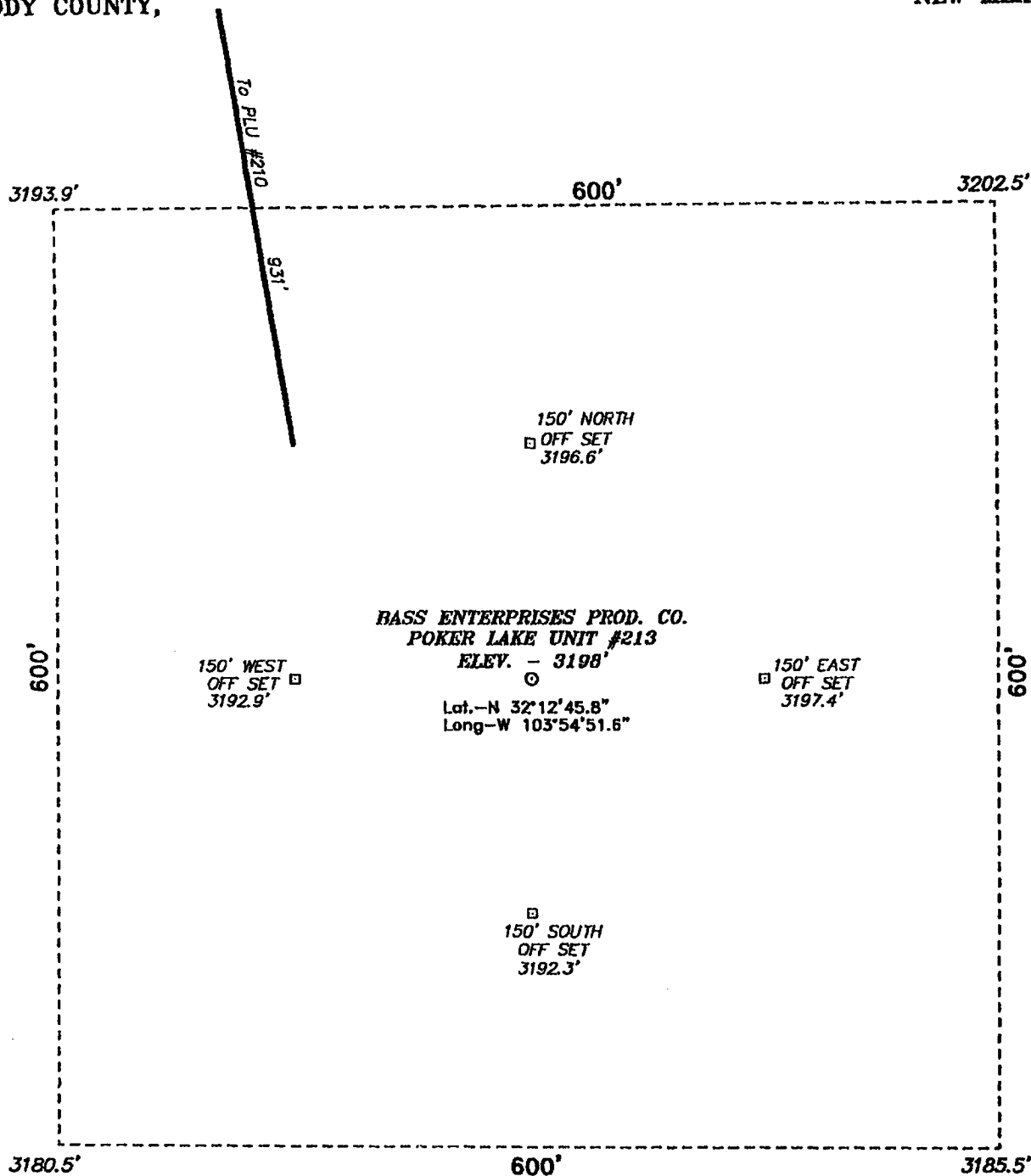
**SURVEYOR CERTIFICATION**

I hereby certify that the well location shown on this plat was plotted from field notes of actual surveys made by me or under my supervision, and that the same is true and correct to the best of my belief.

APRIL 13, 2004  
Date Surveyed  
GARY L. JONES  
Signature  
State of New Mexico  
Professional Surveyor  
No. 4140  
Certificate No. 7977

**Basin Surveys**

**SECTION 18, TOWNSHIP 24 SOUTH, RANGE 30 EAST, N.M.P.M.,  
EDDY COUNTY, NEW MEXICO.**



**DIRECTIONS TO LOCATION:**

FROM THE JUNCTION OF CO. RD. 746A AND CO. RD. 748, GO EASTERLY ON CO. RD. 746A FOR APPROX. 1.0 MILE AND NORTHERLY FOR APPROX. 0.75 MILE TO PROPOSED LEASE ROAD.



**BASIN SURVEYS** P.O. BOX 1786-HOBBS, NEW MEXICO

W.O. Number: 4140 Drawn By: K. GOAD

Date: 04-23-2004 Disk: KJG CD#7 - 4140A.DWG

**BASS ENTERPRISES PRODUCTION CO.**

REF: POKER LAKE UNIT No. 213 / Well Pad Topo

THE POKER LAKE UNIT NO. 213 LOCATED 860' FROM  
THE SOUTH LINE AND 660' FROM THE EAST LINE OF  
SECTION 18, TOWNSHIP 24 SOUTH, RANGE 30 EAST,  
N.M.P.M., EDDY COUNTY, NEW MEXICO.

Survey Date: 04-15-2004 Sheet 1 of 1 Sheets

**EIGHT POINT DRILLING PROGRAM  
BASS ENTERPRISES PRODUCTION CO.**

**NAME OF WELL: Poker Lake Unit #213**

**LEGAL DESCRIPTION - SURFACE: 860' FSL & 660' FEL, Section 18, T-24-S, R-30-E, Eddy County, New Mexico.**

**POINT 1: ESTIMATED FORMATION TOPS**

(See No. 2 Below)

**POINT 2: WATER, OIL, GAS AND/OR MINERAL BEARING FORMATIONS**

Anticipated Formation Tops: KB 3218' (est) GL 3198'

<u>FORMATION</u>	<u>ESTIMATED TOP FROM KB</u>	<u>ESTIMATED SUBSEA TOP</u>	<u>BEARING</u>
T/Rustler	358'	+2860'	Barren
B/Rustler	618'	+2600'	Barren
T/Salt	668'	+2550'	Barren
B/Salt	3288'	-70'	Barren
T/Lamar Lime	3501'	-283'	Barren
T/Ramsey	3527'	-309'	Oil/Gas
T/Lwr Brushy Canyon "8" A	7033'	-3815'	Oil/Gas
T/Bone Spring	7318'	-4100'	Oil/Gas
T/Avalon	7418'	-4200'	Oil/Gas
TD	7700'	-4482'	

**POINT 3: CASING PROGRAM**

<u>TYPE</u>	<u>WITNESS</u>	<u>INTERVALS</u>	<u>PURPOSE</u>	<u>CONDITION</u>
16"		0'- 40'	Conductor	Contractor Discretion
8-5/8", 28#, J-55, ST&C		0'- 610'	Surface	New
5-1/2", 15.5#, J-55, LT&C		0'- 6500'	Production	New
5-1/2", 15.5#, L-80, LT&C		6500'- 7700'	Production	New

**POINT 4: PRESSURE CONTROL EQUIPMENT (SEE ATTACHED DIAGRAM)**

A BOP equivalent to Diagram 1 will be nipped up on the surface casing head. The BOP stack choke, kill lines, kelly cocks, inside BOP, etc. will be hydro-tested to 70% of internal yield pressure of casing. In addition to the high pressure test, a low pressure (200 psi) test will be required. These tests will be performed:

- a) Upon installation
- b) After any component changes
- c) Fifteen days after a previous test
- d) As required by well conditions

A function test to insure that the preventers are operating correctly will be performed on each trip.

**POINT 5: MUD PROGRAM**

<u>DEPTH</u>	<u>MUD TYPE</u>	<u>WEIGHT</u>	<u>FV</u>	<u>PV</u>	<u>YP</u>	<u>FL</u>	<u>Ph</u>
0' - 610'	FW Spud Mud	8.5 - 9.2	70-38	NC	NC	NC	10.0
610' - 5600'	Brine Water	9.8 -10.2	28-30	NC	NC	NC	9.5-10.5
5600' - TD'	Brine Water/Diesel	8.8 - 9.0	32-40	8	2	<25 cc	9.5 - 10.0

*\*May increase vis for logging purposes only.*

**POINT 6: TECHNICAL STAGES OF OPERATION****A) TESTING**

None anticipated.

**B) LOGGING**

GR-CNL-LDT-AIT from TD to base of Salt (+/- 3288').  
GR-CNL-CAL from base of Salt to surface.

**C) CONVENTIONAL CORING**

None anticipated.

**D) CEMENT**

<u>INTERVAL</u>	<u>AMOUNT SXS</u>	<u>FT OF FILL</u>	<u>TYPE</u>	<u>GALS/SX</u>	<u>PPG</u>	<u>FT<sup>3</sup>/SX</u>	<u>COMPRESSIVE</u>	
<b>SURFACE:</b>							<u>Nitrogen</u>	<u>Strength</u>
Lead 0 - 310' (100% excess circ to surface)	200	310	Permian Basin Critical Zone + 1/4# Flocele	10.4	12.8	1.90		
Tail 310-610' (100% excess circ to surface)	200	300	Prem Plus + 2% CaCl <sub>2</sub> + 1/4# Flocele	6.33	14.8	1.35		
<b>PRODUCTION:</b>								
Base Slurry w/nitrogen 3037-7700' + (50% excess)	750	4573	Premium Plus + 2% Zone Sealant 2000	6.32	9.1-14.5	2.3-1.39	300/600 scf/bbl	1200

**E) DIRECTIONAL DRILLING**

No directional services anticipated.

**POINT 7: ANTICIPATED RESERVOIR CONDITIONS**

Normal pressures are anticipated throughout Delaware section. A BHP of 3310 psi (max) or MWE of 8.7 ppg is expected. Lost circulation may exist in the Delaware Section from 3527-7318'. No H<sub>2</sub>S is anticipated.

**POINT 8: OTHER PERTINENT INFORMATION**

**A) Auxiliary Equipment**

Upper and lower kelly cocks. Full opening stab in valve on the rig floor.

**B) Anticipated Starting Date**

Upon approval

12 days drilling operations

14 days completion operations

FDC/cdg

September 27, 2004

**MULTI-POINT SURFACE USE PLAN****NAME OF WELL: Poker Lake Unit #213**

**LEGAL DESCRIPTION - SURFACE:** 860' FSL & 660' FEL, Section 18, T-24-S, R-30-E, Eddy County, New Mexico.

**POINT 1: EXISTING ROADS****A) Proposed Well Site Location:**

See Exhibit A, C and Survey Plats

**B) Existing Roads:**

From Carlsbad, New Mexico, go 8 miles south on Highway 285 to Highway 31. Turn north and 7 miles on Highway 31. Turn east on Highway 128 and go 4 miles to Rawhide Road (located between mile markers 4 and 5). Turn southeast onto Rawhide Road and go approximately 9.0 miles southerly. Turn west on lease road.

**C) Existing Road Maintenance or Improvement Plan:**

See Exhibit A, C and Survey Plats.

**POINT 2: NEW PLANNED ACCESS ROUTE****A) Route Location:**

See Exhibit A ,C and C-1. No new access road required.

**B) Width**

Not Applicable

**C) Maximum Grade**

Not applicable

**D) Turnout Ditches**

Not Applicable

**E) Culverts, Cattle Guards, and Surfacing Equipment**

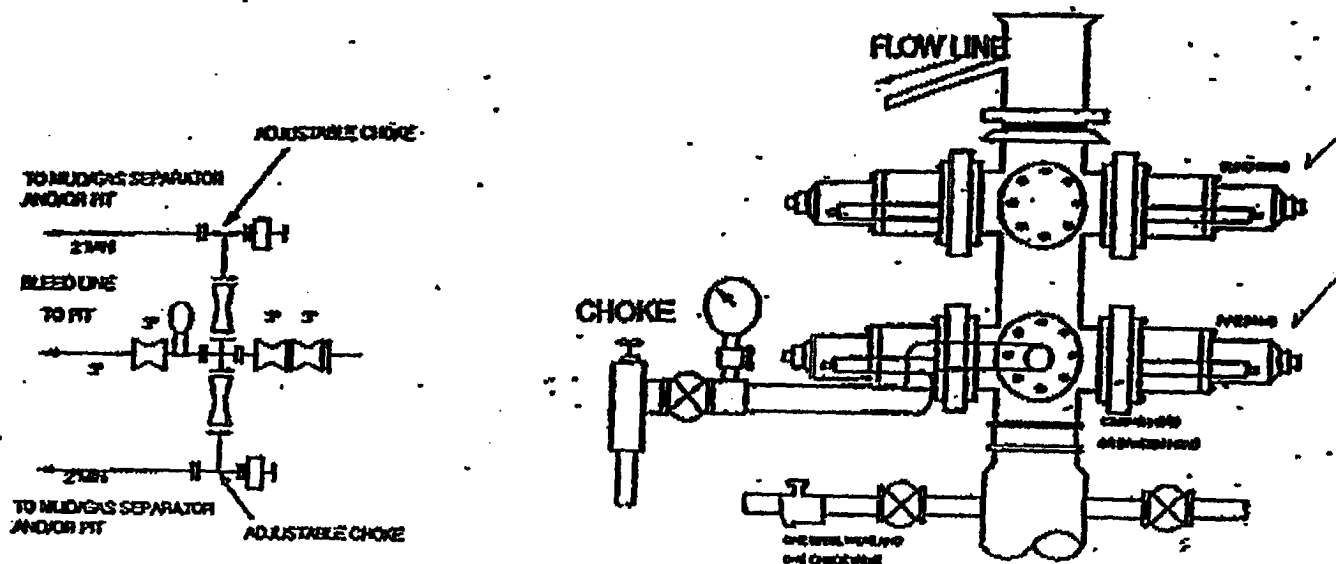
Not Applicable

**POINT 3: LOCATION OF EXISTING WELLS**

Exhibits A, C and C-1 indicates existing wells within the surrounding area.



# 2000 PSI WP

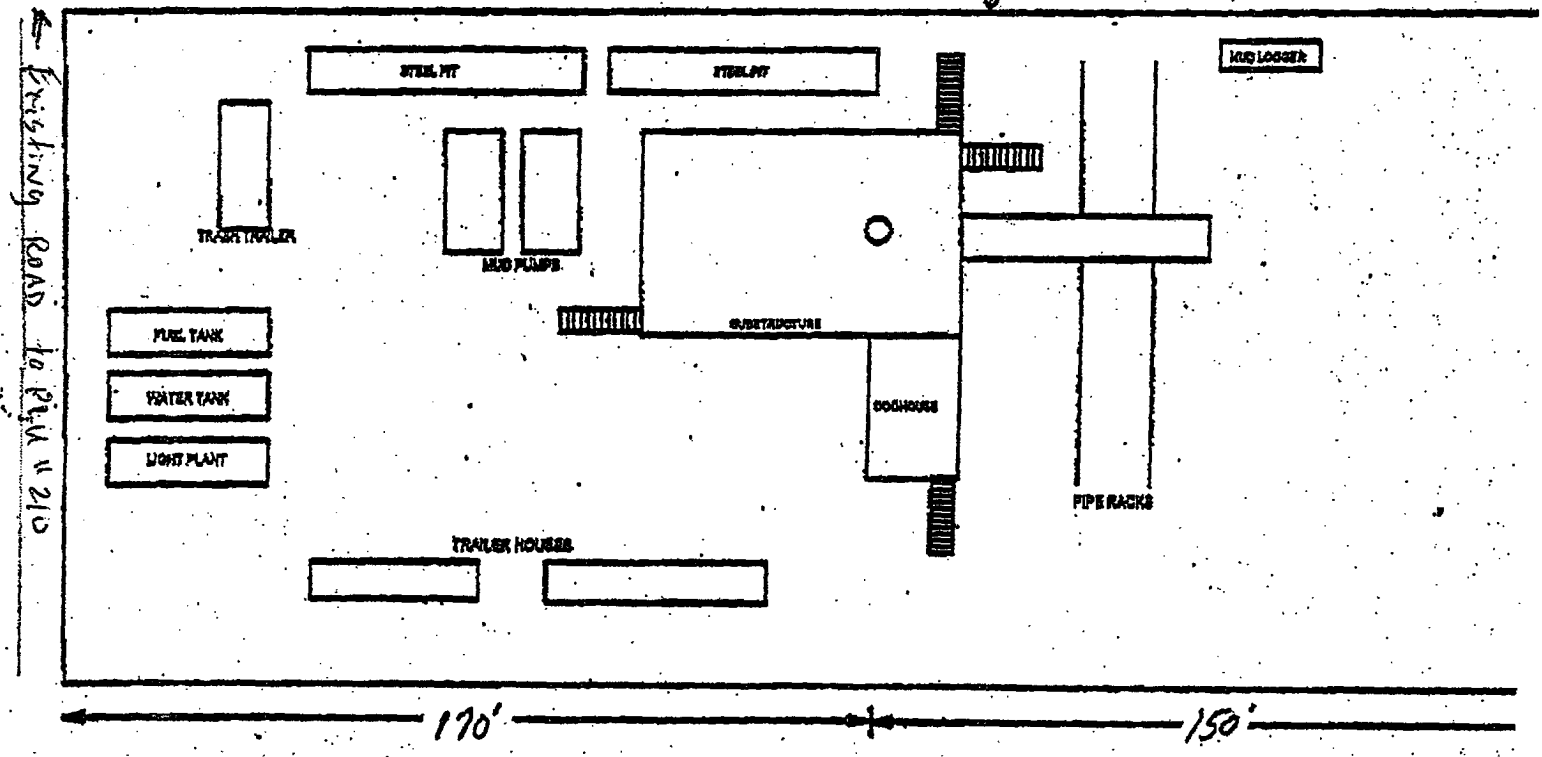
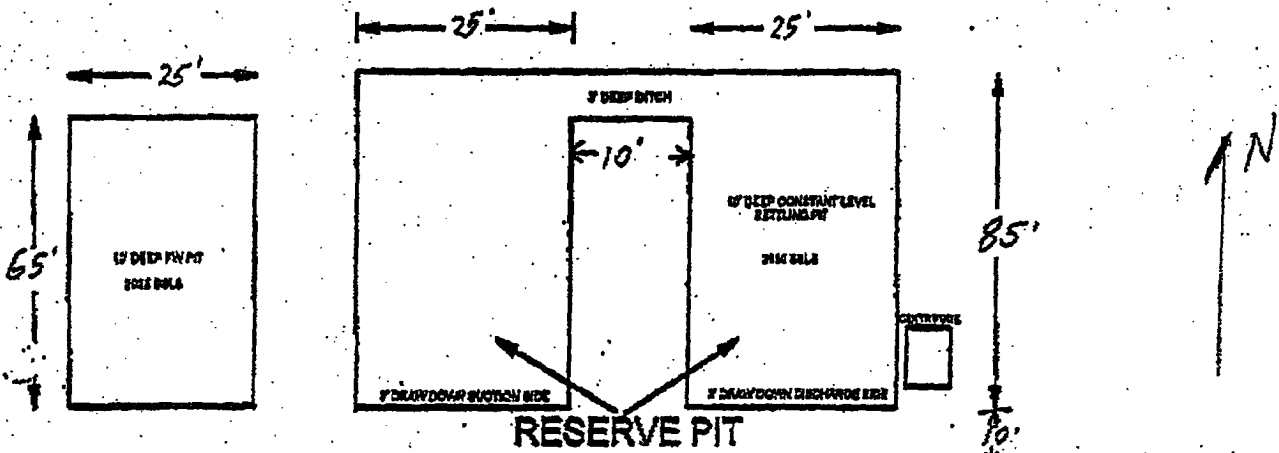


## THE FOLLOWING CONSTITUTE MINIMUM BLOWOUT PREVENTER REQUIREMENTS

- A. One double gate blowout preventer with lower rams for pipe and upper rams blind, all hydraulically controlled.
- B. Opening on preventers between rams to be flanged, studded or clamped and at least two inches in diameter.
- C. All connections from operating manifold to preventers to be all steel hose or tube a minimum of one inch in diameter.
- D. The available closing pressure shall be at least 15% in excess of that required with sufficient volume to operate (close, open, and re-close) the preventers.
- E. All connections to and from preventers to have a pressure rating equivalent to that of the BOP's.
- F. Manual controls to be installed before drilling cement plug.
- G. Valve to control flow through drill pipe to be located on rig floor.
- H. All chokes will be adjustable. Choke spool may be used between rams.

Bass Enterprises  
Poker Lake, WY

EXHIBIT "1"



**BASS ENTERPRISES PRODUCTION COMPANY**  
**POKER LAKE UNIT WELLS RESERVE PIT DIMENSIONS**