

## DISTRICT I

1625 N. FERRY DR., ROSA, NM 88240

## DISTRICT II

1304 W. GRAND AVENUE, ARIZONA, NM 88210

## DISTRICT III

1000 Rio Brazos Rd., Aztec, NM 87410

## DISTRICT IV

1220 S. ST. FRANCIS DR., SANTA FE, NM 87505

## State of New Mexico

Energy, Minerals and Natural Resources Department

## OIL CONSERVATION DIVISION

1220 SOUTH ST. FRANCIS DR.  
Santa Fe, New Mexico 87505

Form C-102

Revised JUNE 10, 2003

Submit to Appropriate District Office

State Lease - 4 Copies

Fee Lease - 3 Copies

## WELL LOCATION AND ACREAGE DEDICATION PLAT

☐ AMENDED REPORT

API Number <b>30-015-33838</b>	Pool Code	Pool Name
Property Code	Property Name <b>MERLAND 26</b>	Well Number <b>2</b>
GRID No.	Operator Name <b>R.B. OPERATING</b>	Elevation <b>2991'</b>

## Surface Location

UL or lot No.	Section	Township	Range	Lot Idn	Feet from the	North/South line	Feet from the	East/West line	County
A	26	23-S	28-E		990	NORTH	330	EAST	EDDY

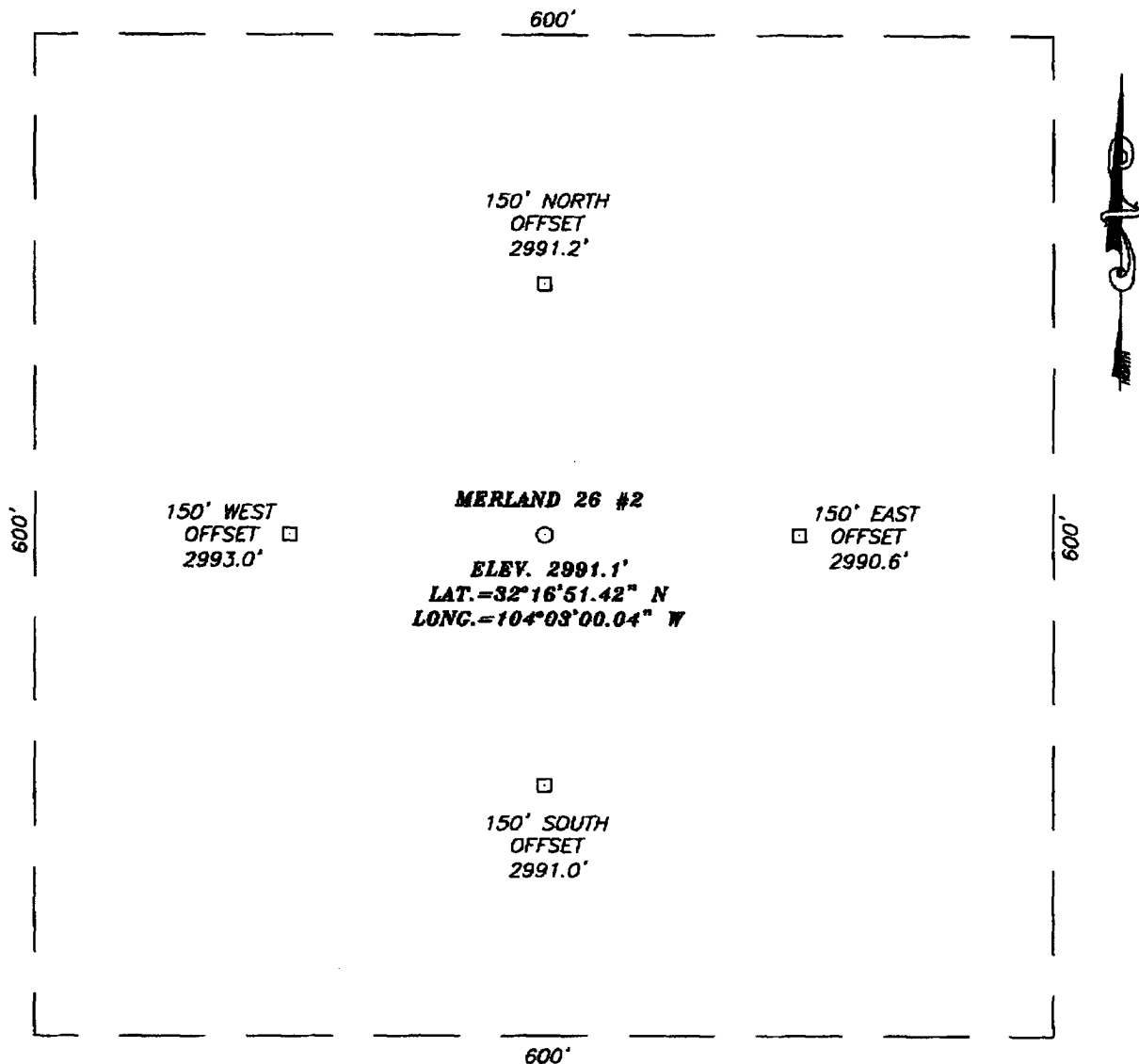
## Bottom Hole Location If Different From Surface

UL or lot No.	Section	Township	Range	Lot Idn	Feet from the	North/South line	Feet from the	East/West line	County
Dedicated Acres <b>40</b>	Joint or Infill	Consolidation Code	Order No.						

NO ALLOWABLE WILL BE ASSIGNED TO THIS COMPLETION UNTIL ALL INTERESTS HAVE BEEN CONSOLIDATED  
OR A NON-STANDARD UNIT HAS BEEN APPROVED BY THE DIVISION

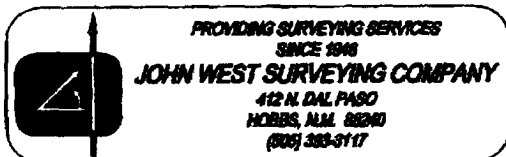
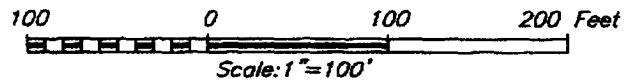
<p>GEODETIC COORDINATES NAD 27 NME Y=466042.3 N X=587560.0 E LAT.=32°16'51.42" N LONG.=104°03'00.04" W</p>	<p><b>OPERATOR CERTIFICATION</b></p> <p>I hereby certify the the information contained herein is true and complete to the best of my knowledge and belief.</p> <p><i>Martin Emery</i> Signature <b>MARTIN EMERY</b> Printed Name <b>CHIEF GEOLOGIST</b> Title <b>DEC 6, 2004</b> Date</p> <p><b>SURVEYOR CERTIFICATION</b></p> <p>I hereby certify that the well location shown on this plat was plotted from field notes of actual surveys made by me or under my supervision and that the same is true and correct to the best of my belief.</p> <p><b>NOVEMBER 17, 2004</b></p> <p>Date Surveyed Signature <i>Gary Edson</i> Professional Surveyor Professional Seal NEW MEXICO 04.11.7510 Certificate No. <b>GARY EDSON</b> 12841</p>
--	---

**SECTION 26, TOWNSHIP 23 SOUTH, RANGE 28 EAST, N.M.P.M.,**  
 EDDY COUNTY, NEW MEXICO



**DIRECTIONS TO LOCATION**

FROM THE INTERSECTION OF CO. RD. #738  
 (GIOVENGO RD.) AND CO. RD. #714 (ASH RD.) GO  
 SOUTH ON CO. RD. #738 0.2 MILES. THIS  
 LOCATION IS 330' WEST.

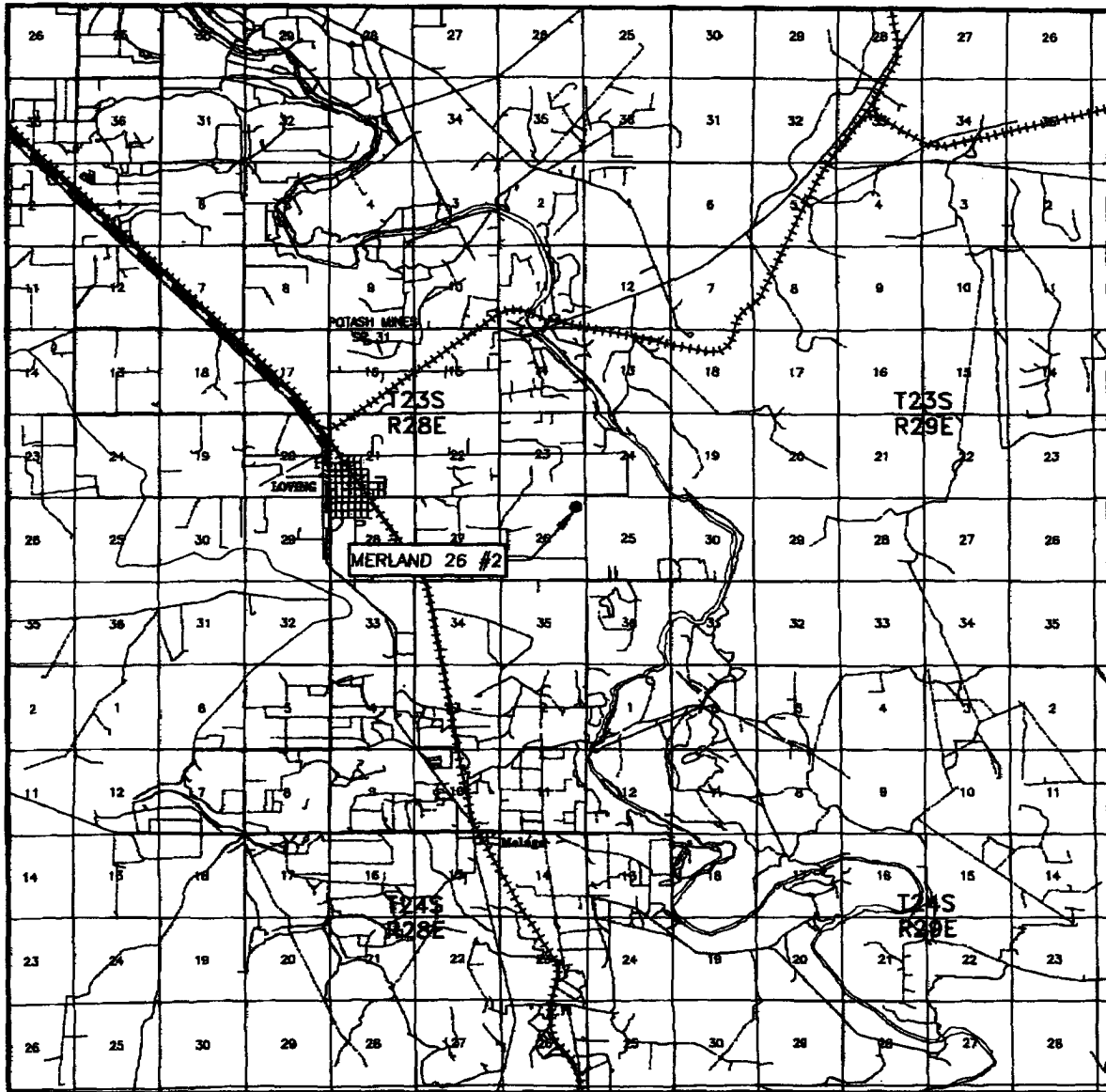


**R.B. OPERATING**

MERLAND 26 #2 WELL  
 LOCATED 990 FEET FROM THE NORTH LINE  
 AND 330 FEET FROM THE EAST LINE OF SECTION 26,  
 TOWNSHIP 23 SOUTH, RANGE 28 EAST, N.M.P.M.,  
 EDDY COUNTY, NEW MEXICO.

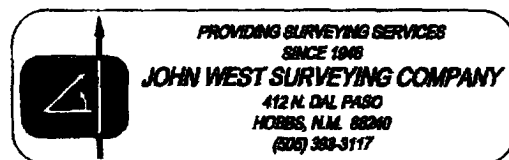
Survey Date: 11/17/04	Sheet 1 of 1 Sheets
W.O. Number: 04.11.1510	Dr By: LA
Date: 11/19/04	Disk: CD#3
04111510	Scale: 1"=100'

# VICINITY MAP

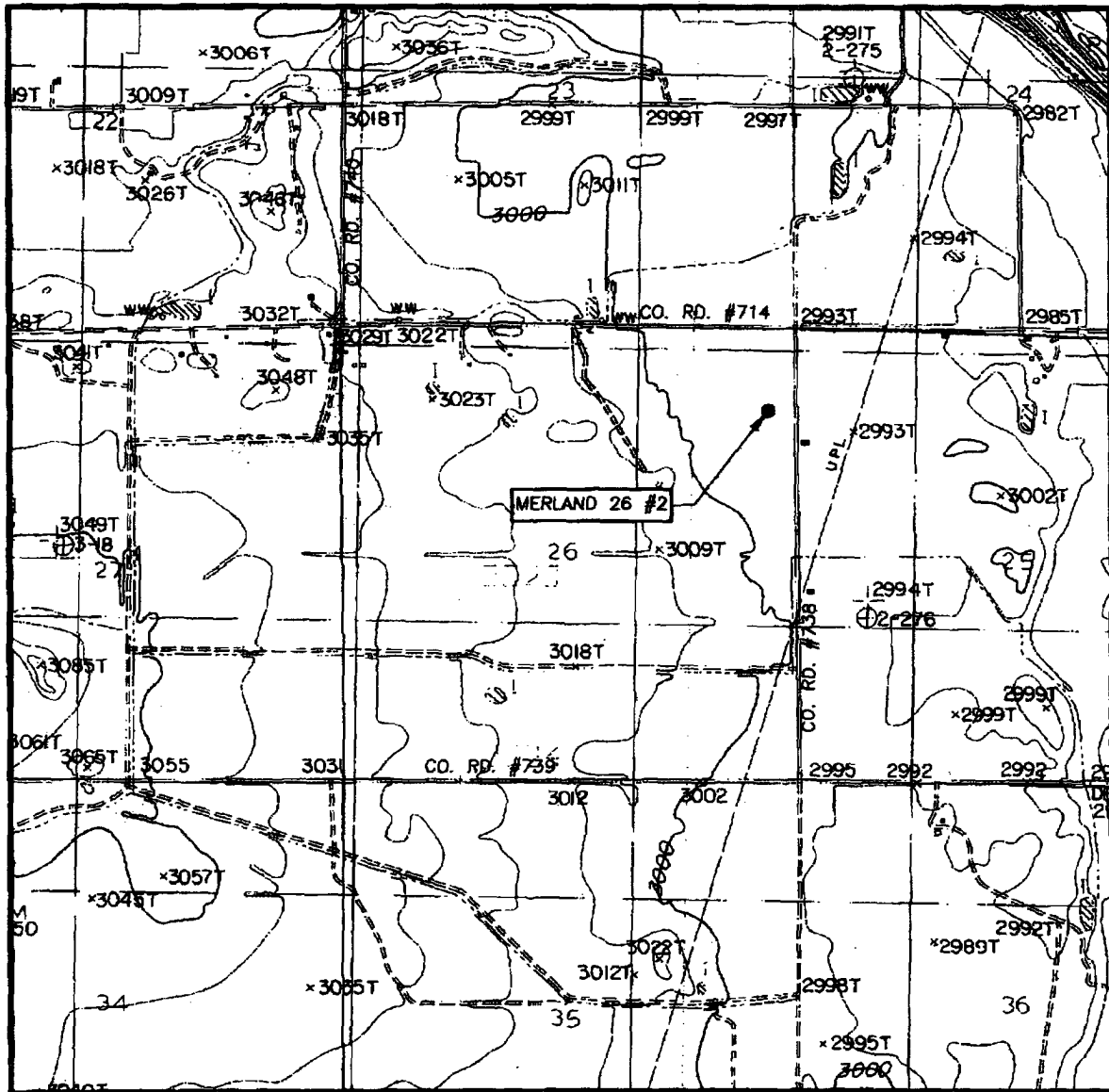


SCALE: 1" = 2 MILES

SEC. 26 TWP. 23-S RGE. 28-E  
 SURVEY N.M.P.M.  
 COUNTY EDDY  
 DESCRIPTION 990' FNL & 330' FEL  
 ELEVATION 2991'  
 OPERATOR R.B. OPERATING  
 LEASE MERLAND 26



# LOCATION VERIFICATION MAP



SCALE: 1" = 2000'

CONTOUR INTERVAL:  
LOVING, N.M. - 10'

SEC. 26 TWP. 23-S RGE. 28-E

SURVEY N.M.P.M.

COUNTY EDDY

DESCRIPTION 990' FNL & 330' FEL

ELEVATION 2991'

OPERATOR R.B. OPERATING

LEASE MERLAND 26

U.S.G.S. TOPOGRAPHIC MAP  
LOVING, N.M.

