

DISTRICT I
1625 N. FRANKLIN DR., ROSA, NM 86240

DISTRICT II
1201 W. GRAND AVENUE, ARTECHA, NM 88210

DISTRICT III
1000 Rio Brazos Rd., Aztec, NM 87410

DISTRICT IV
1220 S. ST. FRANCIS DR., SANTA FE, NM 87505

State of New Mexico
Energy, Minerals and Natural Resources Department

OIL CONSERVATION DIVISION
1220 SOUTH ST. FRANCIS DR.
Santa Fe, New Mexico 87505

Form C-102
Revised JUNE 10, 2003
Submit to Appropriate District Office
State Lease - 4 Copies
Fee Lease - 3 Copies

WELL LOCATION AND ACREAGE DEDICATION PLAT

☐ AMENDED REPORT

API Number	Pool Code	Pool Name
Property Code	Property Name MERLAND 26	Well Number 1
OGED No.	Operator Name R.B. OPERATING	Elevation 3009'

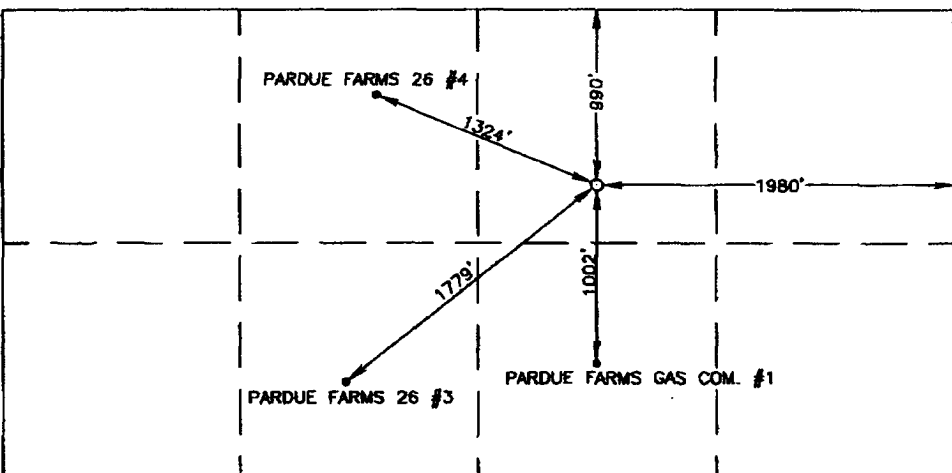
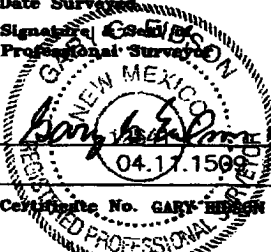
Surface Location

UL or lot No.	Section	Township	Range	Lot Idn	Feet from the	North/South line	Feet from the	East/West line	County
B	26	23-S	28-E		990	NORTH	1980	EAST	EDDY

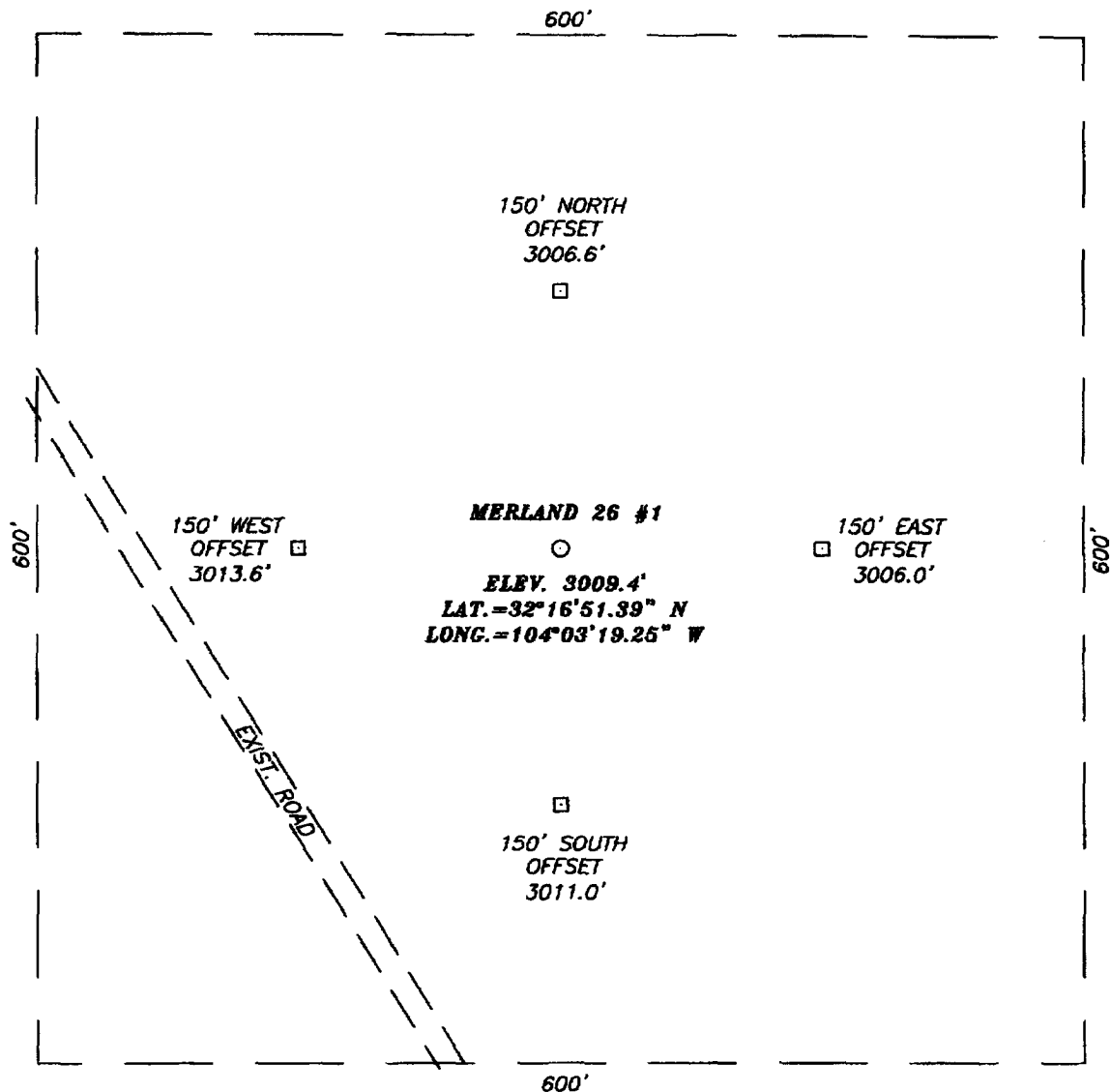
Bottom Hole Location If Different From Surface

UL or lot No.	Section	Township	Range	Lot Idn	Feet from the	North/South line	Feet from the	East/West line	County
Dedicated Acres 4c	Joint or Infill	Consolidation Code	Order No.						

NO ALLOWABLE WILL BE ASSIGNED TO THIS COMPLETION UNTIL ALL INTERESTS HAVE BEEN CONSOLIDATED
OR A NON-STANDARD UNIT HAS BEEN APPROVED BY THE DIVISION

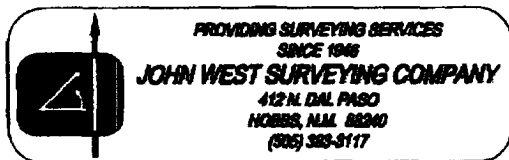
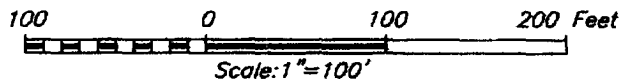
	<p>OPERATOR CERTIFICATION</p> <p>I hereby certify the the information contained herein is true and complete to the best of my knowledge and belief.</p> <p><i>Martin Emery</i> Signature MARTIN EMERY Printed Name CHIEF GEOLOGIST Title 12/7/04 Date</p>
<p>GEODETIC COORDINATES NAD 27 NME Y=466035.3 N X=585910.3 E LAT.=32°16'51.39" N LONG.=104°03'19.25" W</p>	<p>SURVEYOR CERTIFICATION</p> <p>I hereby certify that the well location shown on this plat was plotted from field notes of actual surveys made by me or under my supervision and that the same is true and correct to the best of my belief.</p> <p>NOVEMBER 17, 2004</p> <p>Date Surveyed _____ LA Signature _____ Professional Surveyor  Certificate No. GARY HAGAN 12841</p>

SECTION 26, TOWNSHIP 23 SOUTH, RANGE 28 EAST, N.M.P.M.,
 EDDY COUNTY, NEW MEXICO



DIRECTIONS TO LOCATION

FROM THE INTERSECTION OF CO. RD. #740
 (DONALDSON FARM) AND CO. RD. #714 (ASH RD.)
 GO EAST ON CO. RD. #714 FOR 0.4 MILES TO A
 ROAD ON THE RIGHT. TURN RIGHT AND GO SOUTH
 0.1 MILES. FOLLOW ROAD SOUTHEAST FOR 0.1
 MILES, THIS LOCATION 200'± NORTH.

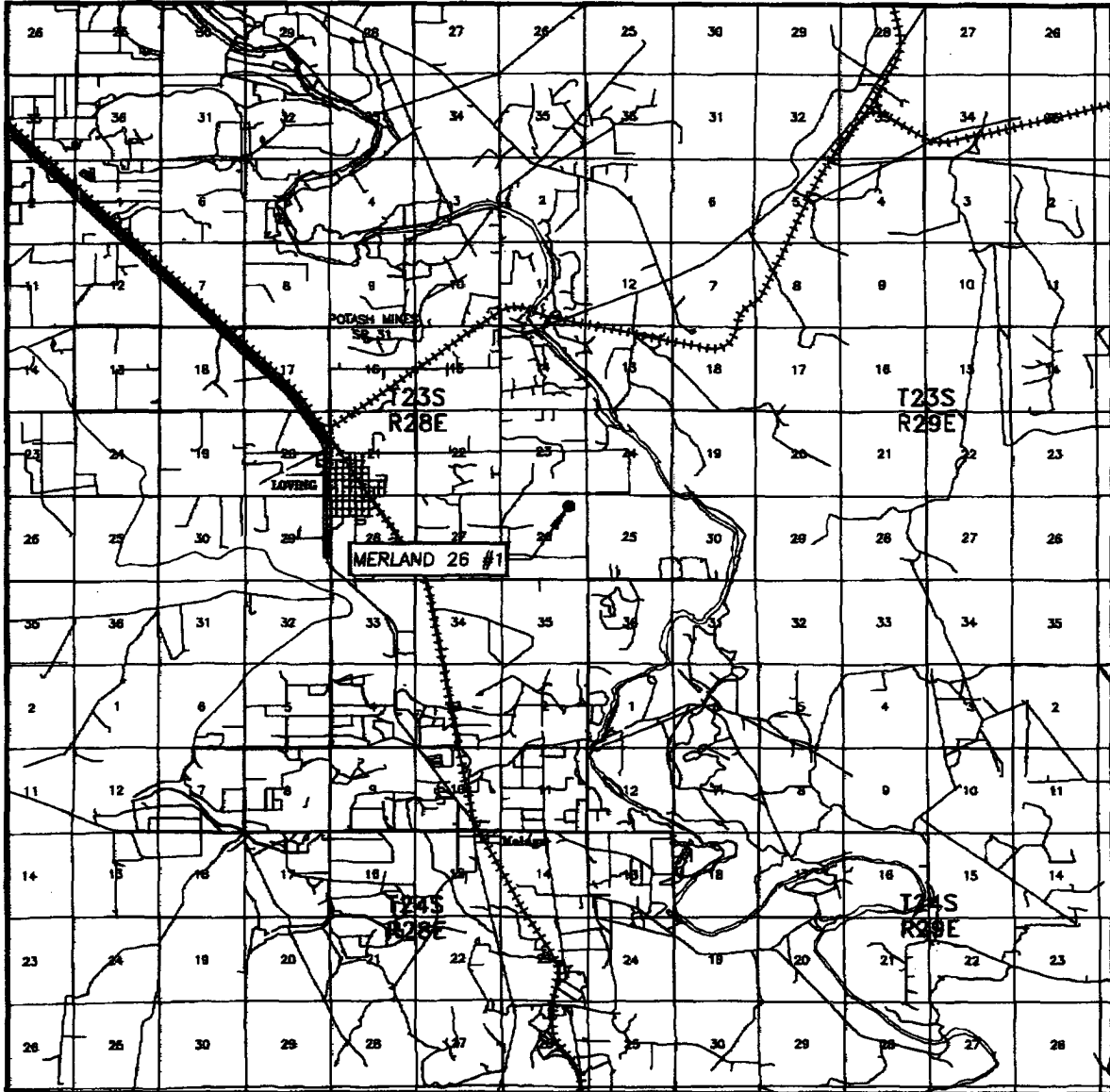


R.B. OPERATING

MERLAND 26 #1 WELL
 LOCATED 990 FEET FROM THE NORTH LINE
 AND 1980 FEET FROM THE EAST LINE OF SECTION 26,
 TOWNSHIP 23 SOUTH, RANGE 28 EAST, N.M.P.M.,
 EDDY COUNTY, NEW MEXICO.

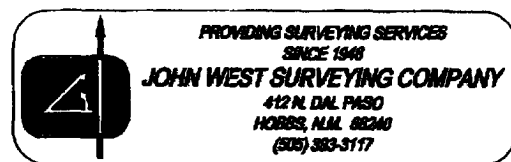
Survey Date: 11/17/04	Sheet 1 of 1 Sheets
W.O. Number: 04.11.1509	Dr By: LA
Date: 11/19/04	Disk: CD#3
04111509	Scale: 1"=100'

VICINITY MAP




SCALE: 1" = 2 MILES

SEC. 26 TWP. 23-S RGE. 28-E
 SURVEY N.M.P.M.
 COUNTY EDDY
 DESCRIPTION 990' FNL & 1980' FEL
 ELEVATION 3009'
 OPERATOR R.B. OPERATING
 LEASE MERLAND 26



[illegible]

CONTOUR INTERVAL:
LOVING, N.M. - 10'



**PROVIDING SURVEYING SERVICES
SINCE 1946**
JOHN WEST SURVEYING COMPANY
412 N. DAL PASO
HOBBES, N.M. 86240
(505) 383-3117