

District I

1625 N. French Dr., Hobbs, NM 88240

District II

1301 W. Grand Ave., Artesia, NM 88210

District III

1000 Rio Brazos Rd., Aztec, NM 87410

District IV1220 S. St Francis Dr., Santa Fe, NM
87505

State of New Mexico
Energy, Minerals and Natural Resources
Oil Conservation Division
1220 S. St Francis Dr.
Santa Fe, NM 87505

Form C-101

Permit 4848

RECEIVED
JAN 10 2005
OCD-ARTESIA

APPLICATION FOR PERMIT TO DRILL

Operator Name and Address DEVON ENERGY PRODUCTION COMPANY, LP 20 N. Broadway Oklahoma City, OK 73102		OGRID Number 6137
		API Number <i>30,015,29345</i>
Property Code 300635	Property Name COTTON DRAW UNIT	Well No. 081

Surface Location

UL or Lot	Section	Township	Range	Lot Idn	Feet From	N/S Line	Feet From	E/W Line	County
L	2	25S	31E		1650	S	660	W	Eddy

Proposed Pools

COTTON DRAW; BONE SPRING 13367

Work Type New Well	Well Type Oil	Cable/Rotary	Lease Type State	Ground Level Elevation 3437
Multiple N	Proposed Depth 11584	Formation Bone Spring	Contractor	Spud Date

Proposed Casing and Cement Program

Type	Hole Size	Casing Size	Casing Weight/ft	Setting Depth	Sacks of Cement	Estimated TOC
Surf	17.5	13.375	48	700	700	
Int1	12.25	9.625	36	4500	1700	
Prod	8.75	7	29	12000	1750	
Liner1	6.125	5	18	13800	350	

Casing/Cement Program: Additional Comments

This is an existing well. Plan to recomple to Bone Springs. Drill out CIBP @ 7550 & sqz Del perfs 7620-7671 w/ 100 sx CI C. Test to 500 psi. Perf 8752-8768, Acid w/ 1500 gals 7.5% NEFE, Frac w/ 72,000# sand. Hang on pump.

Proposed Blowout Prevention Program

Type	Working Pressure	Test Pressure	Manufacturer
Pipe	3000	3000	
Blind	3000	3000	

District I

1625 N. French Dr., Hobbs, NM 88240

District II

1301 W. Grand Ave., Artesia, NM 88210

District III

1000 Rio Brazos Rd., Aztec, NM 87410

District IV1220 S. St Francis Dr., Santa Fe, NM
87505

State of New Mexico
Energy, Minerals and Natural Resources
Oil Conservation Division
1220 S. St Francis Dr.
Santa Fe, NM 87505

Form C-102

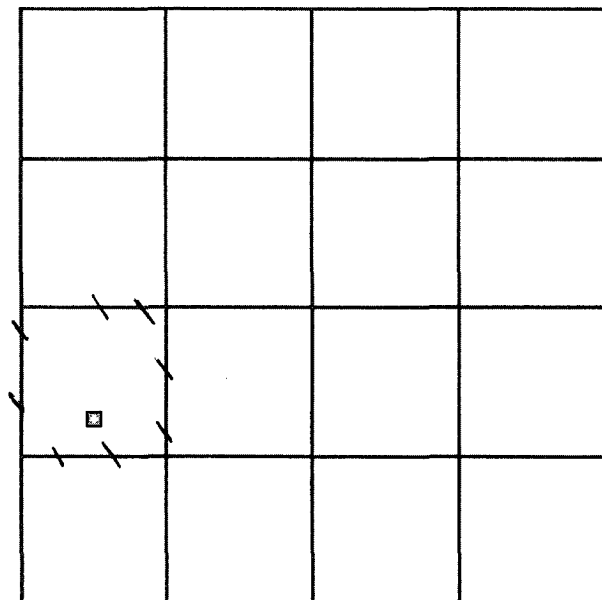
Permit 4848

WELL LOCATION AND ACREAGE DEDICATION PLAT

API Number	Pool Name COTTON DRAW;BONE SPRING	Pool Code 13367
Property Code 300635	Property Name COTTON DRAW UNIT	Well No. 081
OGRID No. 6137	Operator Name DEVON ENERGY PRODUCTION COMPANY, LP	Elevation 3437

Surface And Bottom Hole Location

UL or Lot L	Section 2	Township 25S	Range 31E	Lot Idn	Feet From 1650	N/S Line S	Feet From 660	E/W Line W	County Eddy
Dedicated Acres 40	Joint or Infill	Consolidation Code	Order No.						

**OPERATOR CERTIFICATION**

I hereby certify that the information contained herein is true and complete to the best of my knowledge and belief.

Electronically Signed By: *Linda Guthrie*Title: *S. Reg. Specialist*Date: *01/07/05***SURVEYOR CERTIFICATION**

I hereby certify that the well location shown on this plat was plotted from field notes of actual surveys made by me or under my supervision, and that the same is true and correct to the best of my belief.

Surveyed By: John Piper

Date of Survey: 01/15/1997

Certificate Number: 8254

APD Form

Page 2 of 2

I hereby certify that the information given above is true and complete to the best of my knowledge and belief.	
Electronically Signed By: <i>Linda Suthrie</i>	
Title: <i>Sr. Reg. Specialist</i>	
Date: <i>1/13/05</i>	Phone: <i>405-228-8209</i>

OIL CONSERVATION DIVISION	
Electronically Approved By: <i>WIM W. GUM</i>	
Title: <i>DISTRICT II SUPERVISOR</i>	
Approval Date: <i>JAN 13 2005</i>	Expiration Date: <i>JAN 13 2006</i>
Conditions of Approval: No Conditions	

Permit Comments

Operator: DEVON ENERGY PRODUCTION COMPANY, LP , 6137

Well: COTTON DRAW UNIT #081

User Name	Comment	Comment Date
GUTHRL	This is a recompletion to the Bone Springs formation. There will be no pits.	1/7/2005

DISTRICT I

P.O. Box 1980, Hobbs, NM 88241-1980

DISTRICT II

P.O. Box Drawer DD, Artesia, NM 88211-0719

DISTRICT III

1000 Rio Brazos Rd., Aztec, NM 87410

DISTRICT IV

P.O. Box 2088, Santa Fe, NM 87504-2088

State of New Mexico
Energy, Minerals and Natural Resources Department

OIL CONSERVATION DIVISION

P.O. Box 2088
Santa Fe, New Mexico 87504-2088

Form C-102

Revised February 10, 1994

Instructions on back

Submit to Appropriate District Office

State Lease - 4 Copies

Fee Lease - 3 Copies

☐ AMENDED REPORT

WELL LOCATION AND ACREAGE DEDICATION PLAT

¹ API Number 30-015-29345	² Pool Code	³ Pool Name COTTON DRAW
⁴ Property Code	⁵ Property Name COTTON DRAW UNIT	⁶ Well No. 81
⁷ OGRID Number 6137	⁸ Operator Name Devon Energy Production Co., LP	⁹ Elevation 3437'

¹⁰ Surface Location

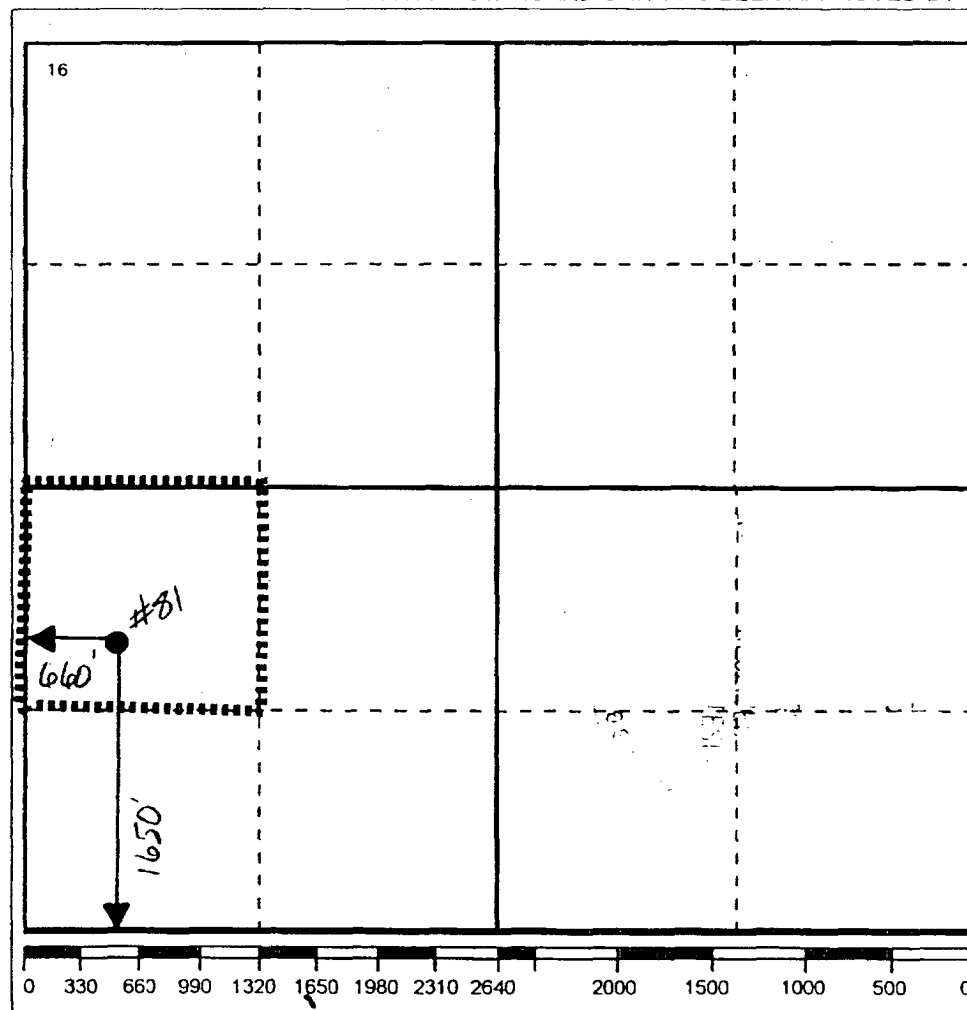
Ul or lot no.	Section	Township	Range	Lot.Idn	Feet From The	North/South Line	Feet From The	East/West Line	County
L	2	25-S	31-E		1650	SOUTH	660	WEST	EDDY

¹¹ Bottom Hole Location If Different From Surface

Ul or lot no.	Section	Township	Range	Lot.Idn	Feet From The	North/South Line	Feet From The	East/West Line	County

¹² Dedicated Acres 40	¹³ Joint or Infill No	¹⁴ Consolidation Code	¹⁵ Order No.
-------------------------------------	-------------------------------------	----------------------------------	-------------------------

NO ALLOWABLE WILL BE ASSIGNED TO THIS COMPLETION UNTIL ALL INTERESTS HAVE BEEN CONSOLIDATED
OR A NON-STANDARD UNIT HAS BEEN APPROVED BY THE DIVISION

¹⁷ OPERATOR CERTIFICATION

I hereby certify that the information
contained herein is true and complete to the
best of my knowledge and belief

Signature

Printed Name

Linda B Guthrie

Position

Regulatory Specialist

Date

01/07/05

¹⁸ SURVEYOR CERTIFICATION

I hereby certify that the well location shown
on this plat was plotted from field notes of
actual surveys made by me or under my
supervision, and that the same is true and
correct to the best of my knowledge and
belief.

Date Surveyed

Signature & Seal of
Professional Surveyor

Certificate No.