

0324

UNITED STATES
DEPARTMENT OF THE INTERIOR
BUREAU OF LAND MANAGEMENT

FORM APPROVED
OMB No. 1004-0136
Expires November 30, 2000

EC

APPLICATION FOR PERMIT TO DRILL OR REENTER

1a. Type of Work: ☒ DRILL ☐ REENTER

CONFIDENTIAL

1b. Type of Well: ☒ Oil Well ☐ Gas Well ☐ Other ☒ Single Zone ☐ Multiple Zone

2. Name of Operator
BASS ENTERPRISES PRODUCTION CO

Contact: CINDI GOODMAN
E-Mail: CDGOODMAN@BASSPET.COM

3a. Address
P O BOX 2760
MIDLAND, TX 79702

3b. Phone No. (include area code)
Ph: 432-683-2277

5. Lease Serial No.
NMLC069627A

6. If Indian, Allottee or Tribe Name

7. If Unit or CA Agreement, Name and No.
NMNM71016X

8. Lease Name and Well No.
POKER LAKE UNIT 232

9. API Well No.

10. Field and Pool, or Exploratory
...-DELAWARE

4. Location of Well (Report location clearly and in accordance with any State requirements. *)

At surface NWNW 990FNL 990FWL 32.10423 N Lat, 103.55344 W Lon

At proposed prod. zone NWNW 990FNL 990FWL 32.10423 N Lat, 103.55344 W Lon

11. Sec., T., R., M., or Blk. and Survey or Area

Sec 31 T24S R30E Mer NMP

14. Distance in miles and direction from nearest town or post office*
14 MILES EAST OF MALAGA, NM

12. County or Parish
EDDY

13. State
NM

15. Distance from proposed location to nearest property or
lease line, ft. (Also to nearest drig. unit line, if any)
990'

16. No. of Acres in Lease

RECEIVED

MAR 16 2005

17. Spacing Unit dedicated to this well

40.00

18. Distance from proposed location to nearest well, drilling,
completed, applied for, on this lease, ft.
2100'

19. Proposed Depth

7700 MD
7700 TVD

20. BLM/BIA Bond No. on file

21. Elevations (Show whether DF, KB, RT, GL, etc.)
3162 GL

22. Approximate date work will start
03/24/2005

23. Estimated duration
14

24. Attachments

CARLSBAD CONTROLLED WATER BASIN

The following, completed in accordance with the requirements of Onshore Oil and Gas Order No. 1, shall be attached to this form:

1. Well plat certified by a registered surveyor.
2. A Drilling Plan.
3. A Surface Use Plan (if the location is on National Forest System Lands, the SUPO shall be filed with the appropriate Forest Service Office).

4. Bond to cover the operations unless covered by an existing bond on file (see Item 20 above).
5. Operator certification
6. Such other site specific information and/or plans as may be required by the authorized officer.

25. Signature
(Electronic Submission)

Name (Printed/Typed)
CINDI GOODMAN Ph: 432-683-2277

Date
01/20/2005

Title
AUTHORIZED REPRESENTATIVE

Approved by (Signature)
/s/ Tony J. Herrell

Name (Printed/Typed)
/s/ Tony J. Herrell

Date
MAR 11 2005

Title
FIELD MANAGER

Office
CARLSBAD FIELD OFFICE

Application approval does not warrant or certify the applicant holds legal or equitable title to those rights in the subject lease which would entitle the applicant to conduct operations thereon.

Conditions of approval, if any, are attached.

APPROVAL FOR 1 YEAR

Title 18 U.S.C. Section 1001 and Title 43 U.S.C. Section 1212, make it a crime for any person knowingly and willfully to make to any department or agency of the United States any false, fictitious or fraudulent statements or representations as to any matter within its jurisdiction.

Additional Operator Remarks (see next page)

Electronic Submission #53222 verified by the BLM Well Information System
For BASS ENTERPRISES PRODUCTION CO, sent to the Carlsbad
Committed to AFMSS for processing by LINDA ASKWIG on 01/20/2005 (05LA0282AE)

APPROVAL SUBJECT TO
GENERAL REQUIREMENTS
AND SPECIAL STIPULATIONS
ATTACHED

Witness Surface Casing.

** BLM REVISED ** BLM REVISED ** BLM REVISED ** BLM REVISED ** BLM REVISED **

Operator Remarks:

Surface casing to be set into Rustler below all fresh water sands.
Production casing will be cemented using Zone Seal Cement.
Drilling Procedure, BOP Diagram, Anticipated tops and surface plans attached.

This well is located outside the Secretary's Potash area and outside the R-111 Potash area. There are not potash leases within 1 mile of the location.

State of New Mexico

Energy, Minerals and Natural Resources Department

Form C-102

Revised March 17, 1999

Submit to Appropriate District Office

State Lease - 4 Copies

Fee Lease - 3 Copies

☐ AMENDED REPORT

OIL CONSERVATION DIVISION

2040 South Pacheco

Santa Fe, New Mexico 87504-2088

DISTRICT I

15 N. French Dr., Hobbs, NM 88240

DISTRICT II

811 South First, Artesia, NM 88210

DISTRICT III

1000 Rio Brazos Rd., Aztec, NM 87410

DISTRICT IV

2040 South Pacheco, Santa Fe, NM 87505

WELL LOCATION AND ACREAGE DEDICATION PLAT

API Number	Pool Code	Pool Name
	47545	NASH DRAW-DELAWARE
Property Code	Property Name	Well Number
001796	POKER LAKE UNIT	232
OGHD No.	Operator Name	Elevation
001801	BASS ENTERPRISES PRODUCTION COMPANY	3162'

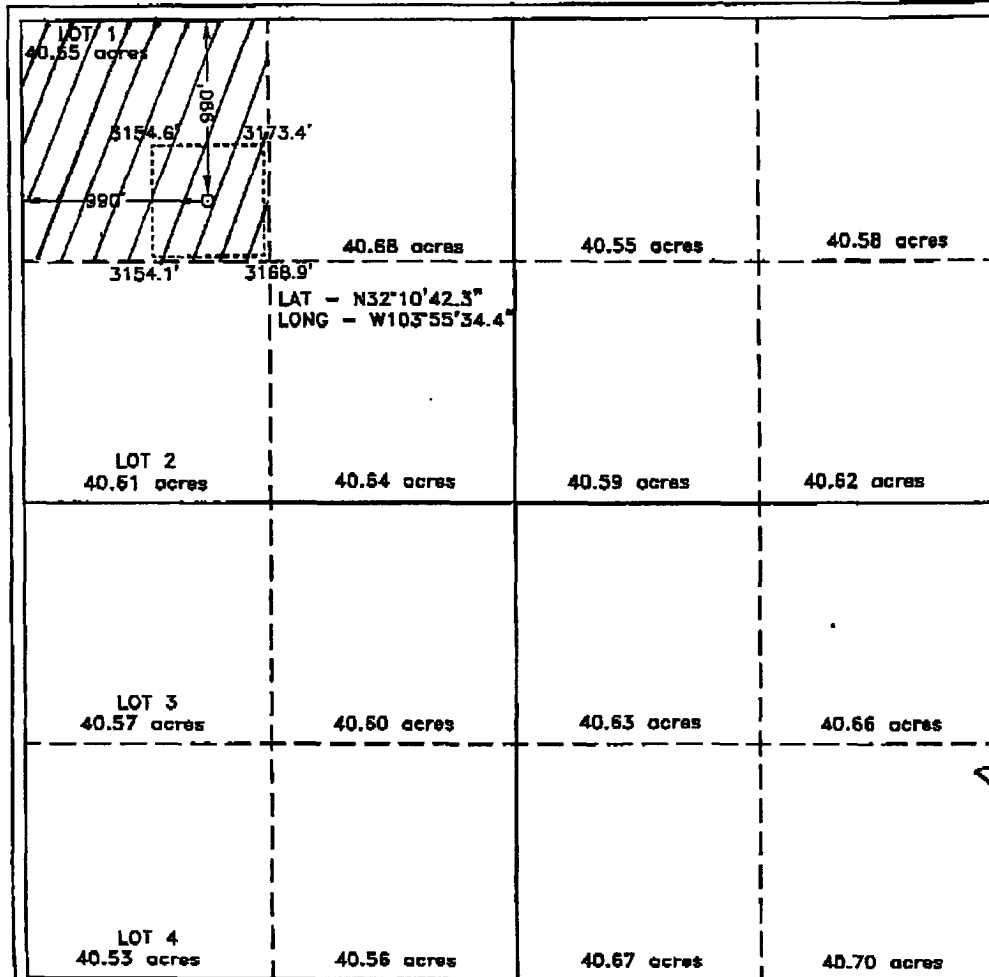
Surface Location

UL or lot No.	Section	Township	Range	Lot Idn	Feet from the	North/South line	Feet from the	East/West line	County
D	31	24 S	30 E		990	NORTH	990	WEST	EDDY

Bottom Hole Location If Different From Surface

UL or lot No.	Section	Township	Range	Lot Idn	Feet from the	North/South line	Feet from the	East/West line	County
Dedicated Acres	Joint or Infill	Consolidation Code	Order No.						
40	I								

NO ALLOWABLE WILL BE ASSIGNED TO THIS COMPLETION UNTIL ALL INTERESTS HAVE BEEN CONSOLIDATED
OR A NON-STANDARD UNIT HAS BEEN APPROVED BY THE DIVISION



OPERATOR CERTIFICATION

I hereby certify that the information
contained herein is true and complete to the
best of my knowledge and belief.

William R. Dannels
Signature

W.R. DANIELS
Printed Name

DIVISION DRILLING SUPT.
Title

1-20-05
Date

SURVEYOR CERTIFICATION

I hereby certify that the well location shown
on this plat was plotted from field notes of
actual surveys made by me or under my
supervision and that the same is true and
correct to the best of my belief.

JANUARY 13, 2005
Date Surveyed

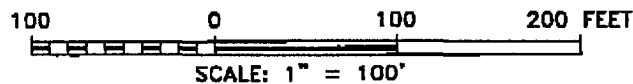
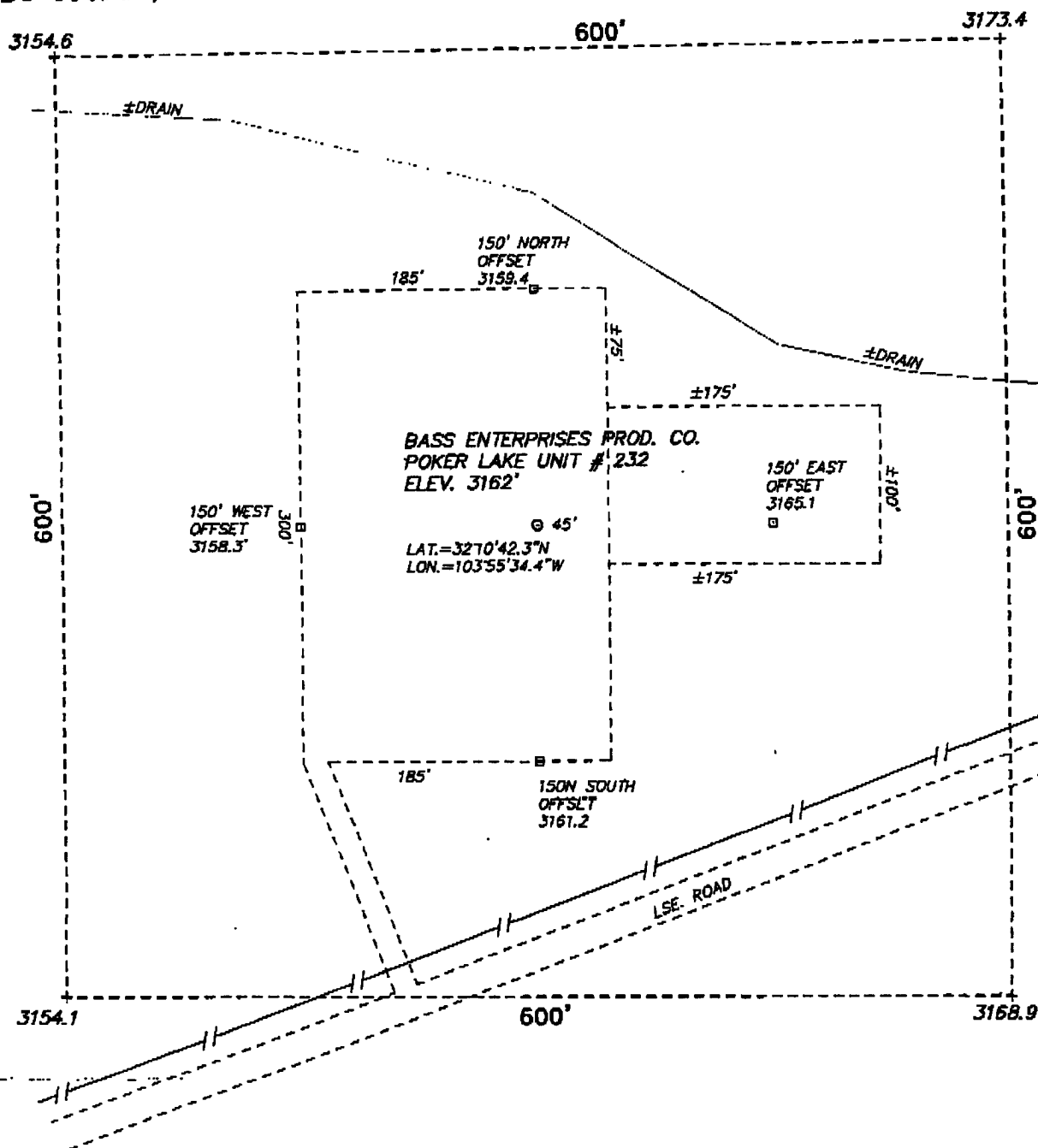
GARY L. JONES
Signature of Registered Professional Surveyor

W.C. No. 494
Professional Surveyor

Certified by Gary L. Jones
Professional Surveyor

7977
BASIN SURVEYS

SECTION 31, TOWNSHIP 24 SOUTH, RANGE 30 EAST, N.M.P.M., EDDY COUNTY, NEW MEXICO.



BASS ENTERPRISES PRODUCTION CO.

REF: POKER LAKE UNIT No. 232 / Well Pad Topo

THE POKER LAKE UNIT No. 232 LOCATED 990' FROM
THE WEST LINE AND 990' FROM THE NORTH LINE OF
SECTION 31, TOWNSHIP 24 SOUTH, RANGE 30 EAST,
N.M.P.M., EDDY COUNTY, NEW MEXICO.

BASIN SURVEYS P.O. BOX 1786 - HOBBS, NEW MEXICO

W.O. Number: 4946

Drawn By: GWS

Date: 01-12-05

Disk: BASS4946

Survey Date: 01-12-05

Sheet 1 of 1 Sheets

**EIGHT POINT DRILLING PROGRAM
BASS ENTERPRISES PRODUCTION CO.**

NAME OF WELL: Poker Lake Unit #232

LEGAL DESCRIPTION - SURFACE: 990' FNL & 990' FWL, Section 31, T-24-S, R-30-E, Eddy County, New Mexico.

POINT 1: ESTIMATED FORMATION TOPS

(See No. 2 Below)

POINT 2: WATER, OIL, GAS AND/OR MINERAL BEARING FORMATIONS

Anticipated Formation Tops: KB 3182' (est) GL 3162'

<u>FORMATION</u>	<u>ESTIMATED TOP FROM KB</u>	<u>ESTIMATED SUBSEA TOP</u>	<u>BEARING</u>
T/Rustler	172'	+3010	Barren
T/Salt	482'	+2700'	Barren
T/Lwr Brushy Canyon "8" A	6977'	-3795'	Oil/Gas
T/Bone Spring	7212'	-4030'	Oil/Gas
TD	7700'	-4518'	

POINT 3: CASING PROGRAM

<u>TYPE</u>	<u>INTERVALS</u>	<u>PURPOSE</u>	<u>CONDITION</u>
16"	0' - 40'	Conductor	Contractor Discretion
8-5/8", 28#, J-55, LT&C	0' - 450'	Surface	New
5-1/2", 15.5#, J-55, LT&C	0' - 6300'	Production	New
5-1/2", 17#, J-55, LT&C	6300' - 7700'	Production	New

WITNESS

POINT 4: PRESSURE CONTROL EQUIPMENT (SEE ATTACHED DIAGRAM)

A BOP equivalent to Diagram 1 will be nipped up on the surface casing head. The BOP stack, choke, kill lines, kelly cocks, inside BOP, etc. will be hydro-tested to 70% of internal yield pressure of casing. In addition to the high pressure test, a low pressure (200 psi) test will be required. These tests will be performed:

- Upon installation
- After any component changes
- Fifteen days after a previous test
- As required by well conditions

A function test to insure that the preventers are operating correctly will be performed on each trip.

POINT 5: MUD PROGRAM

DEPTH	MUD TYPE	WEIGHT	FV	PV	YP	FL	Ph
0' - 450'	FW Spud Mud	8.5 - 9.2	70-38	NC	NC	NC	10.0
450' - 5600'	Brine Water	9.8 -10.2	28-30	NC	NC	NC	9.5-10.5
5600' - TD'	Brine Water/Diesel	8.8 - 9.0	32-40	8	2	<25 cc	9.5 - 10.0

**May increase vis for logging purposes only.*

POINT 6: TECHNICAL STAGES OF OPERATION**A) TESTING**

None anticipated.

B) LOGGING

GR-CNL-LDT-AIT from TD to base of Salt (+/- 3200').
GR-CNL-CAL from base of Salt to surface.

C) CONVENTIONAL CORING

None anticipated.

D) CEMENT

INTERVAL	AMOUNT SXS	FT OF FILL	TYPE	GALS/SX	PPG	FT ³ /SX	COMPRESSIVE	
SURFACE:							Nitrogen	Strength
Lead 0'-450' (100% excess circ to surface)	300	450	Prem Plus + 2% CaCl ₂ + 1/2# Flocele	6.33	14.8	1.35		
PRODUCTION:								
Base Slurry w/nitrogen 3000-7700' + (50% excess)	775	4700	Premium Plus + 2% Zone Sealant 2000	6.32	9.1-14.5	2.3-1.39	300/600 scf/bbl	1200

E) DIRECTIONAL DRILLING

No directional services anticipated.

POINT 7: ANTICIPATED RESERVOIR CONDITIONS

Normal pressures are anticipated throughout Delaware section. A BHP of 3480 psi (max) or MWE of 8.7 ppg is expected. Lost circulation may exist in the Delaware Section from 3437-7242'. No H₂S is anticipated.

POINT 8: OTHER PERTINENT INFORMATION**A) Auxiliary Equipment**

Upper and lower kelly cocks. Full opening stab in valve on the rig floor.

B) Anticipated Starting Date

Upon approval

14 days drilling operations

14 days completion operations

WCH/cdg

January 18, 2005

MULTI-POINT SURFACE USE PLAN

NAME OF WELL: Poker Lake Unit #232

LEGAL DESCRIPTION - SURFACE: 990' FNL & 990' FWL, Section 31, T-24-S, R-30-E, Eddy County, New Mexico.

POINT 1: EXISTING ROADS

A) Proposed Well Site Location:

See Exhibit A, B and Survey Plats

B) Existing Roads:

From Carlsbad, New Mexico, go 8 miles south on Highway 285 to Highway 31. Turn north and go 7 miles on Highway 31. Turn east on Highway 128 and go 4 miles to Rawhide Road (located between mile markers 4 and 5). Turn southeast onto Rawhide Road and go approximately 14.0 miles southerly.

C) Existing Road Maintenance or Improvement Plan:

See Exhibit A, B and Survey Plats.

POINT 2: NEW PLANNED ACCESS ROUTE

A) Route Location:

See Exhibit A, B and Survey Plats. Proposed new road is approximately 150' in length.

B) Width

12' wide

C) Maximum Grade

Not applicable.

D) Turnout Ditches

Spaced per BLM requirements.

E) Culverts, Cattle Guards, and Surfacing Equipment

If required, culverts and cattle guards will be set per BLM Specs.

POINT 3: LOCATION OF EXISTING WELLS

Exhibit A and B indicate existing wells within the surrounding area.

POINT 12: OPERATOR'S FIELD REPRESENTATIVE

Page 6

(Field personnel responsible for compliance with development plan for surface use).

DRILLING

William R. Dannels
Box 2760
Midland, Texas 79702
(432) 683-2277

PRODUCTION

Mike Waygood
3104 East Green Street
Carlsbad, New Mexico 88220
(505) 887-7329

Kent A. Adams
Box 2760
Midland, Texas 79702
(432) 683-2277

POINT 13: CERTIFICATION

I hereby certify that I, or persons under my direct supervision have inspected the proposed drill site and access route; that I am familiar with the conditions which currently exist; that the statements made in the plan are, to the best of my knowledge, true and correct; and that the work associated with operations proposed herein will be performed by Bass Enterprises Production Co. and it's contractors and subcontractors in conformity with this plan and the terms and conditions under which it is approved. This statement is subject to the provisions of 18 U.S.C. 1001 for the filing of a false statement.

1-20-05

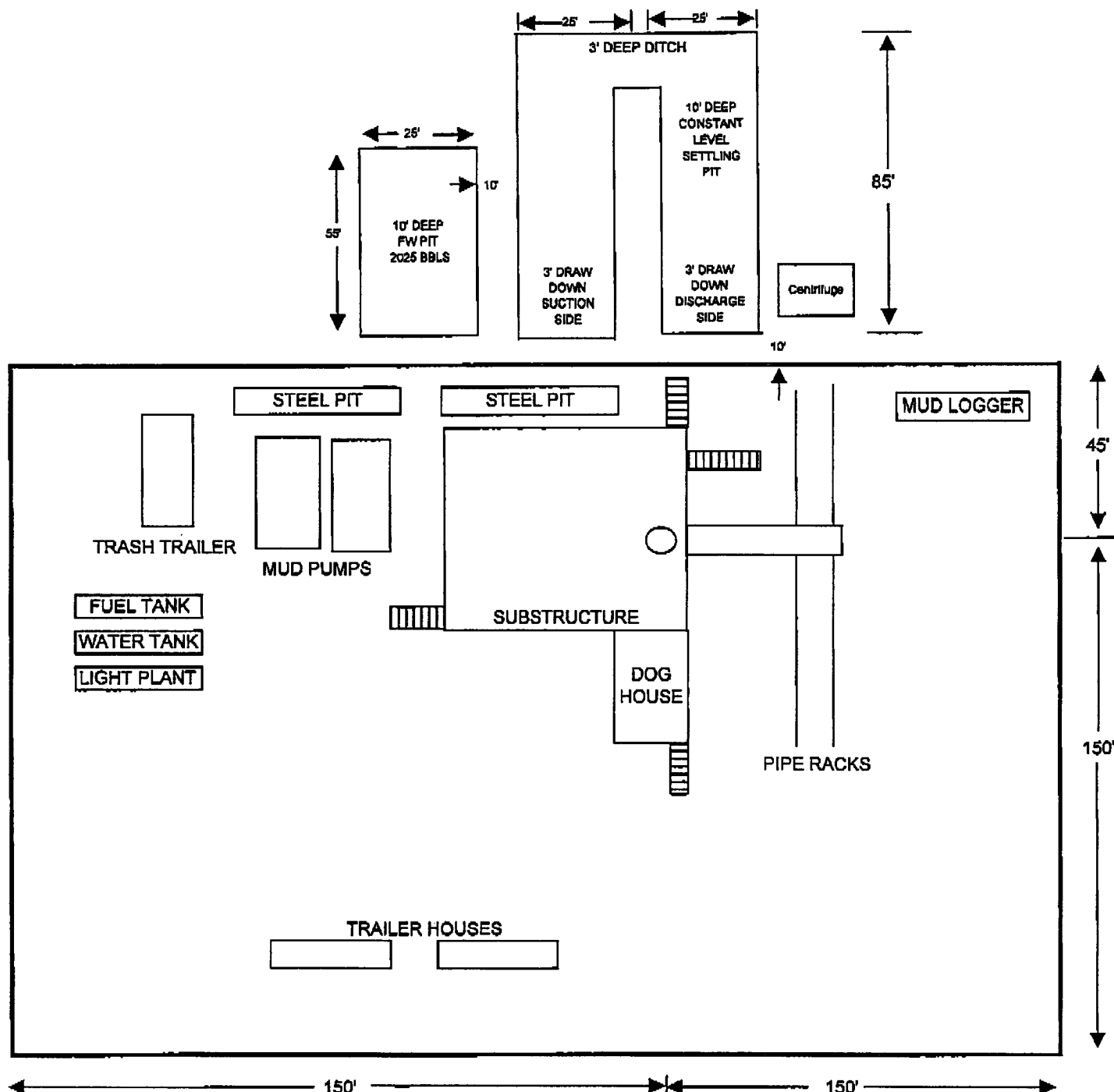
Date

William R. Dannels
William R. Dannels

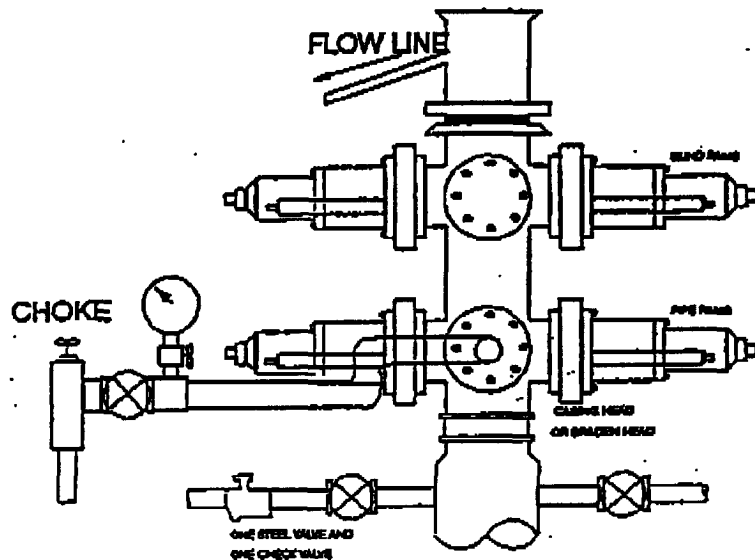
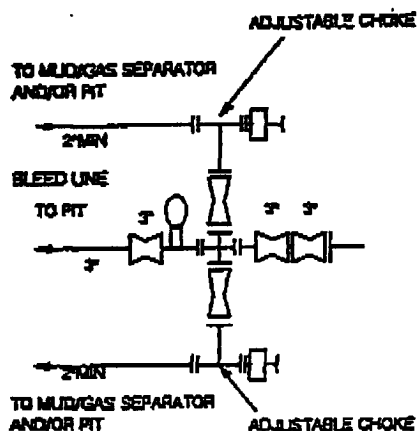
WCH/cdg

Bass Enterprises Production Company
Grey Wolf Rig 15
Well Pad
Reserve Pit Diagram

EXHIBIT "D"



2000 PSI WP



THE FOLLOWING CONSTITUTE MINIMUM BLOWOUT PREVENTER REQUIREMENTS

- A. One double gate blowout preventer with lower rams for pipe and upper rams blind, all hydraulically controlled.
- B. Opening on preventers between rams to be flanged, studded or clamped and at least two inches in diameter.
- C. All connections from operating manifold to preventers to be all steel hose or tube a minimum of one inch in diameter.
- D. The available closing pressure shall be at least 15% in excess of that required with sufficient volume to operate (close, open, and re-close) the preventers.
- E. All connections to and from preventers to have a pressure rating equivalent to that of the BOP's.
- F. Manual controls to be installed before drilling cement plug.
- G. Valve to control flow through drill pipe to be located on rig floor.
- H. All chokes will be adjustable. Choke spool may be used between rams.