

SURFACE USE AND OPERATING PLAN

1. Existing & Proposed Access Roads

- A. The well site survey and elevation plat for the proposed well is shown in Exhibit #1. It was staked by John West Engineering, Hobbs, NM.
- B. All roads to the location are shown in the topographic map Exhibit #2. The existing lease roads are illustrated and are adequate for travel during drilling and production operations. Upgrading existing roads prior to drilling the well will be done where necessary.
- C. Directions to Location: From the intersection of U.S. Hwy #82 and County Rd. #215 (Kewanee Rd.), go West on U.S. Hwy #82 approx 0.2 miles. Turn Left and go South approx 0.1 mile. This location is approx 150 feet East of lease road. See Vicinity Map, Exhibit #3
- D. Routine grading and maintenance of existing roads will be conducted as necessary to maintain their condition as long as any operations continue on this lease.

2. Proposed Access Road:

Exhibit #4 shows that 0' of new access road will be required for this location. If any road is required it will be constructed as follows:

- A. The maximum width of the running surface will be 14'. The road will be crowned, ditched and constructed of 6" rolled and compacted caliche. Ditches will be at 3:1 slope and 4 feet wide. Water will be diverted where necessary to avoid ponding, prevent erosion, maintain good drainage, and to be consistent with local drainage patterns.
- B. The average grade will be less than 1%.
- C. No turnouts are planned.
- D. No culverts, cattleguard, gates, low water crossings or fence cuts are necessary.
- E. Surfacing material will consist of native caliche. Caliche will be obtained from the nearest BLM approved caliche pit or reserve pit area.

3. Location of Existing Well:

Exhibit #5 shows all existing wells within a one-mile radius of this well. As shown on this plat there are numerous wells producing from the San Andres and Yeso formations.

4. Location of Existing and/or Proposed Facilities:

- A. COG Operating LLC does operate a production facility on this lease.
- B. If the well is productive, contemplated facilities will be as follows:
 - 1) Production will be sent to the Burch Keely Satellite A located in Section 24. The facility location is shown in Exhibit #5.
 - 2) The tank battery and facilities including all flow lines and piping will be installed according to API specifications.
 - 3) Any additional caliche will be obtained from a BLM approved caliche pit. Any additional construction materials will be purchased from contractors.
 - 4) Proposed flow lines, will follow an archaeologically approved route to the Burch Keely Satellite A in Section 24. The flowline will be SDR 7 3" poly line laid on the surface and will be approximately 1750' in length.
 - 5) It will be necessary to run electric power if this well is productive. Power will be provided by CVE and they will submit a separate plan and ROW for service to the well location.
 - 6) If the well is productive, rehabilitation plans will include the following:
 - a) The original topsoil from the well site will be returned to the location, and the site will be re-contoured as close as possible to the original site.

5. Location and Type of Water Supply:

The well will be drilled with combination brine and fresh water mud system as outlined in the drilling program. The water will be obtained from commercial water stations in the area and hauled to location by transport truck over the existing and proposed access roads shown in Exhibit #2. If a commercial fresh water source is nearby, fast line may be laid along existing road ROW's and fresh water pumped to the well. No water well will be drilled on the location.

6. Source of Construction Materials:

All caliche required for construction of the drill pad and proposed new access road (approximately 2500 cubic yards) will be obtained from a BLM approved caliche pit or the reserve pit.

7. Methods of Handling Water Disposal:

- A. The well will be drilled utilizing a closed loop mud system. Drill cuttings will be held in roll-off style mud boxes and taken to an NMOCD approved disposal site.
- B. Drilling fluids will be contained in steel mud pits.
- C. Water produced from the well during completion will be held temporarily in steel tanks and then taken to an NMOCD approved commercial disposal facility.
- D. Garbage and trash produced during drilling or completion operations will be collected in a trash bin and hauled to an approved landfill. No toxic waste or hazardous chemicals will be produced by this operation.
- E. After the rig is moved out and the well is either completed or abandoned, all waste materials will be cleaned up within 30 days. In the event of a dry hole only a dry hole marker will remain.

8. Ancillary Facilities:

No airstrip, campsite or other facilities will be built as a result of the operation on this well.

9. Well Site Layout:

- A. The drill pad layout, with elevations staked by John West Engineering, is shown in Exhibit #4. Dimensions of the pad and pits are shown on Exhibit #6. V door direction is North. Topsoil, if available, will be stockpiled per BLM specifications. Because the pad is almost level no major cuts will be required.
- B. Exhibit #6 also shows the proposed orientation of closed loop system and access road. No permanent living facilities are planned, but a temporary foreman/toolpusher's trailer will be on location during the drilling operations.

10. Plans for Restoration of the Surface:

- A. The location and road will be rehabilitated as recommended by the BLM.
- B. Upon completion of proposed operations, if the well is completed, the reserve pit area will be closed as outlined in Section 4.6 above within the same prescribed time. Any additional caliche required for facilities will be obtained from a BLM approved caliche pit. Topsoil removed from the drill site will be used to re-contour the pit area to its original natural level and re-seeded as per BLM specifications.

11. Surface Ownership:

- A. The surface is owned by the U.S. Government and is administered by the Bureau of Land Management. The surface is multiple uses with the primary uses of the region for grazing of livestock and the production of oil and gas.
- B. The surface tenant for this site is Bogel Farms, Lewis Derrick, P O Box 441, Artesia, NM 88211.
- C. The proposed road routes and surface location will be restored as directed by the BLM.

12. Other Information:

- A. The area around the well site is grassland and the topsoil is sandy. The vegetation is moderately sparse with native prairie grasses, some mesquite and shinnery oak. No wildlife was observed but it is likely that mule deer, rabbits, coyotes and rodents traverse the area.
- B. There is no permanent or live water in the immediate area.
- C. There are no dwellings within 2 miles of this location.
- D. If needed, a Cultural Resources Examination is being prepared by Southern New Mexico Archaeological Services, Inc. P.O. Box 1, Bent New Mexico, 88314, phone # 505-671-4797 and the results will be forwarded to your office in the near future. Otherwise, **COG will be participating in the Permian Basin MOA Program.**

13. Bond Coverage:

Bond Coverage is Nationwide Bond # 000215

14. Lessee's and Operator's Representative:

The COG Operating LLC representative responsible for assuring compliance with the surface use plan is as follows:

John Coffman,
Drilling Superintendent
COG Operating LLC
550 W. Texas, Suite 1300
Midland, TX 79701
Phone (432) 683-7443 (office)

Erick Nelson.
Division Operations Manager
COG Operating LLC
550 W. Texas, Suite 1300
Midland, TX 79701
Phone (505) 746-2210 (office)

*Surface Use Plan
COG Operating, LLC
Burch Keely Unit #624
SHL: 2458' FSL & 2464' FWL, Unit K
BHL: 2310' FSL & 2640' FWL, Unit F
Section 24, T-17-S, R-29-E
Eddy County, New Mexico*

(432) 631-9762 (cell)

(432) 238-7591 (cell)

I hereby certify that I, or persons under my direct supervision, have inspected the drill site and access road proposed herein; that I am familiar with the conditions that presently exist; that I have full knowledge of State and Federal laws applicable to this operation; that the statements made in this APD package are, to the best of my knowledge, true and correct; and that the work associated with the operations proposed herein will be performed in conformity with this APD package and the terms and conditions under which it is approved. I also certify that I, or COG Operating, LLC, am responsible for the operations conducted under this application. These statements are subject to the provisions of 18 U.S.C. 1001 for the filing of false statements. Executed this 14th day of October, 2010.

Signed: Carl Bird

Printed Name: Carl Bird
Position: Drilling Engineer
Address: 550 W. Texas, Suite 1300, Midland, Texas 79701
Telephone: (432) 683-7443
Field Representative (if not above signatory): Same
E-mail: cbird@conchoresources.com

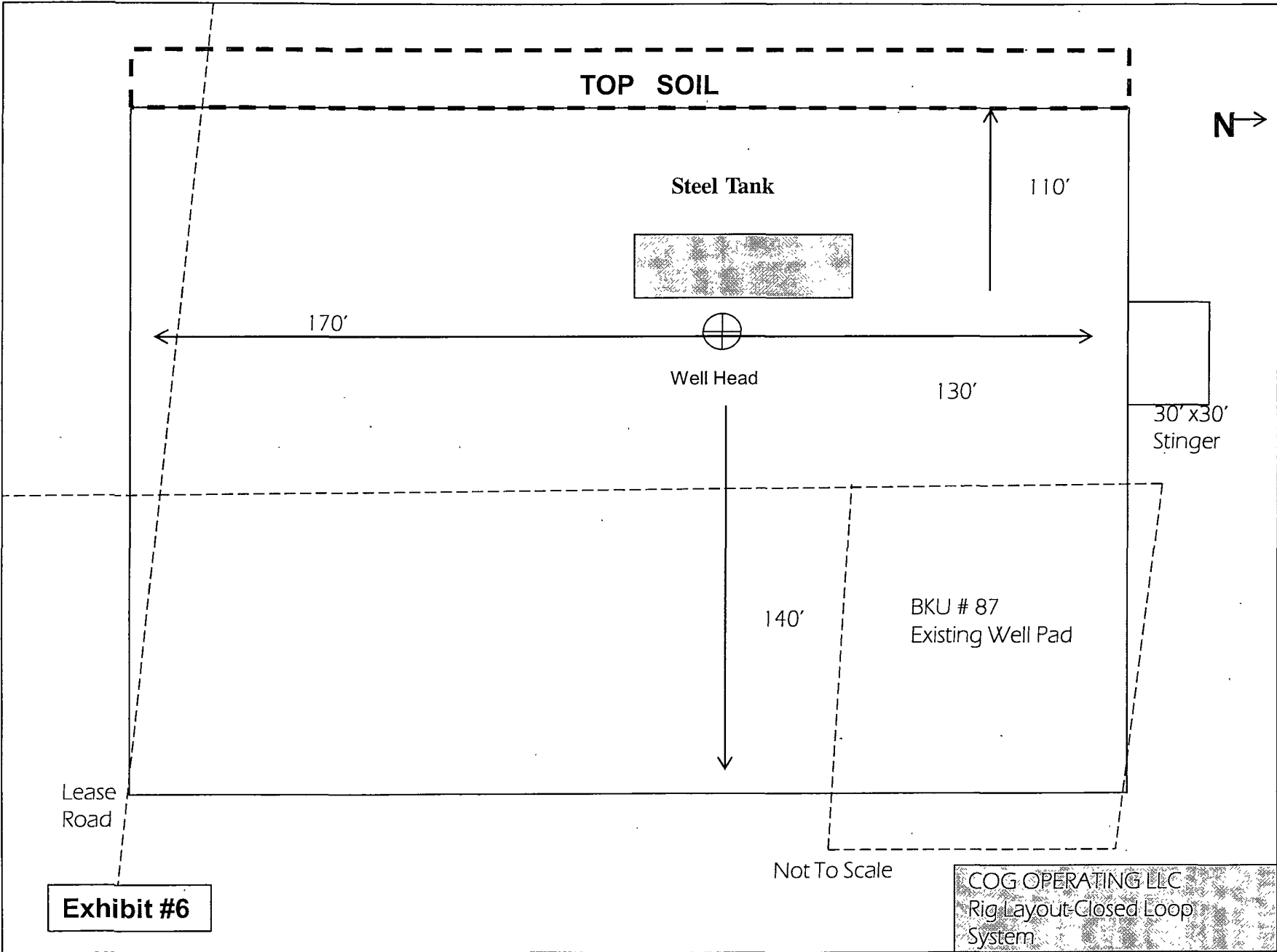


Exhibit #6

COG OPERATING LLC
Rig Layout-Closed Loop System

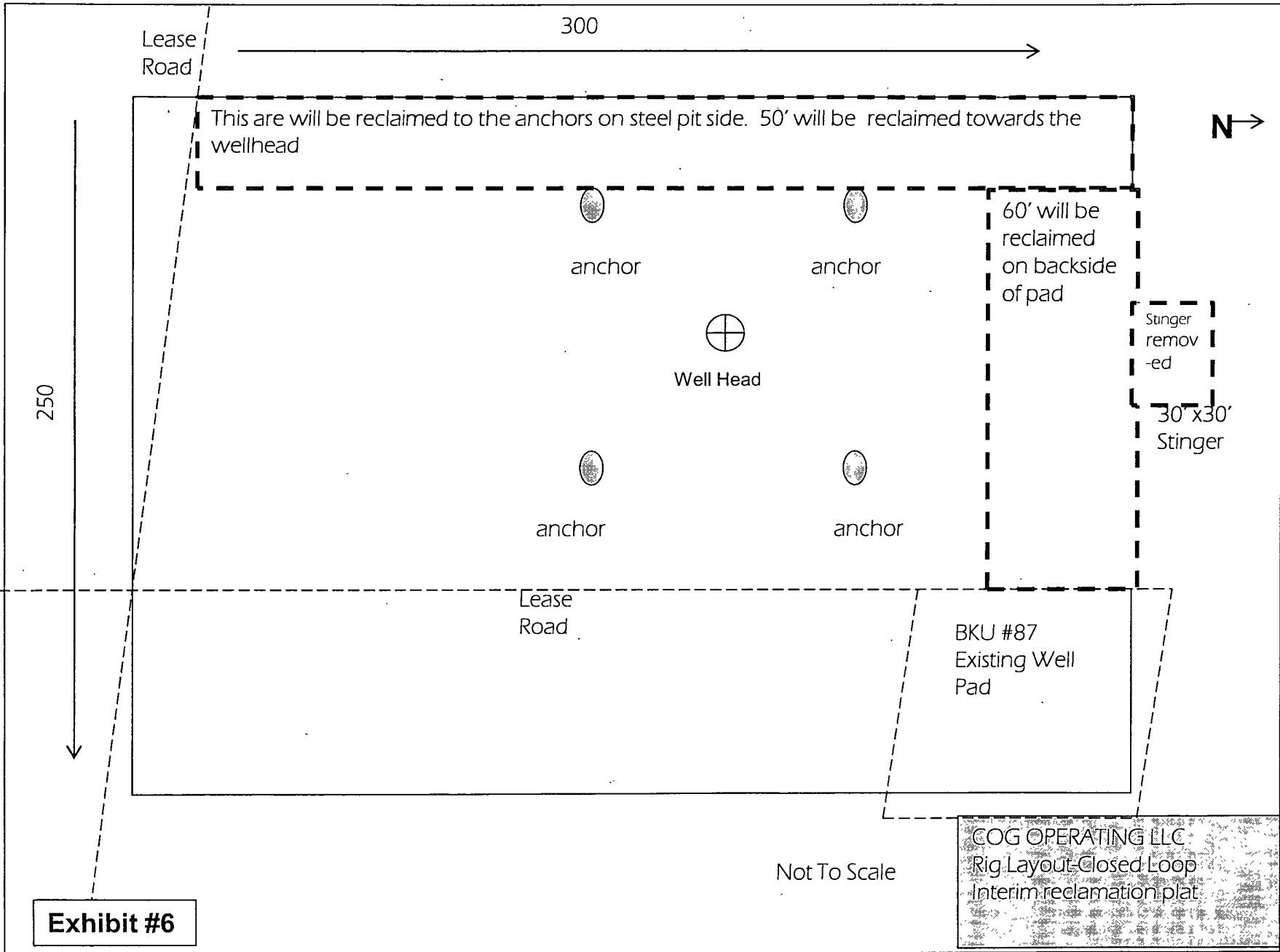
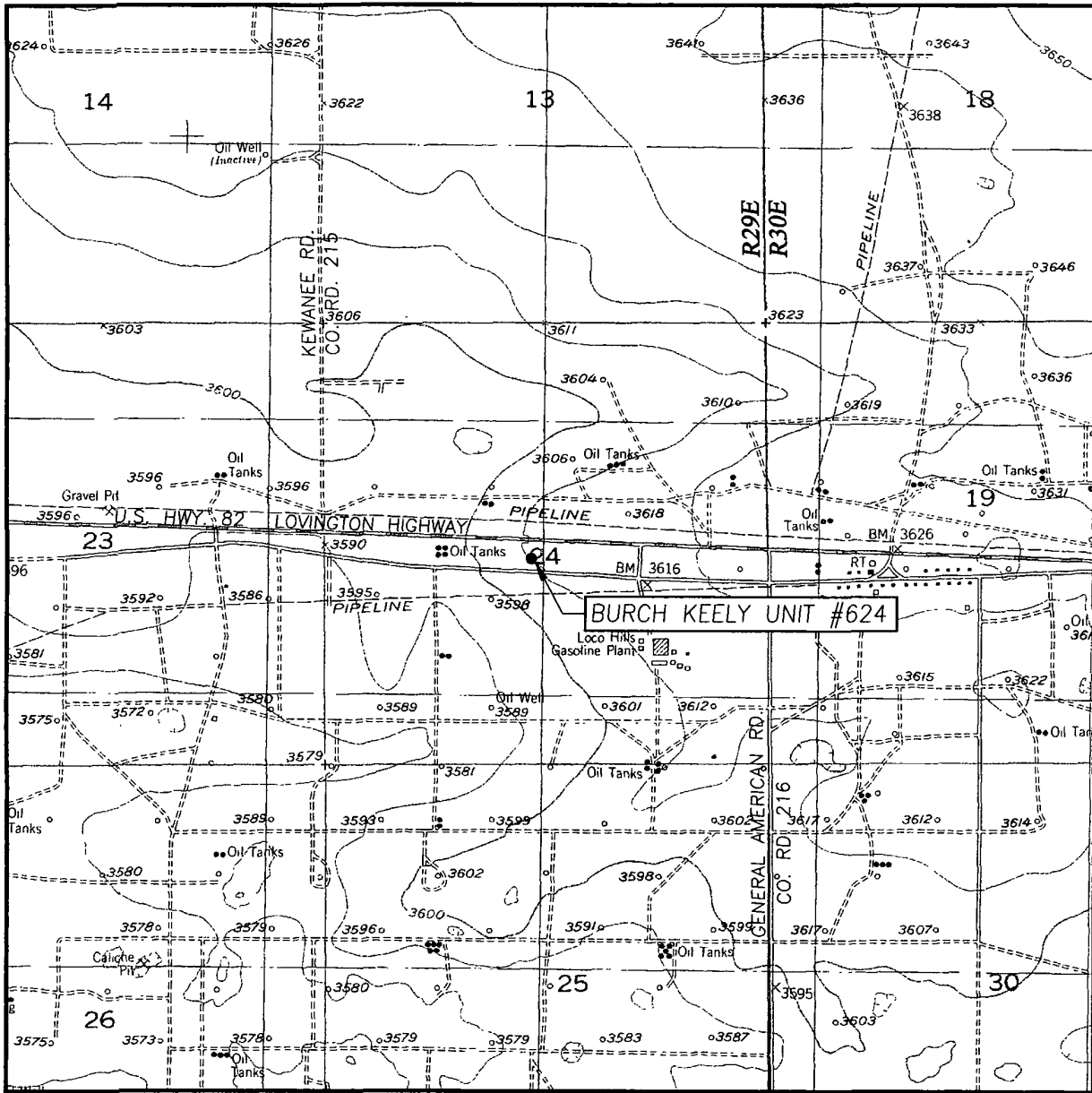


Exhibit #6

Not To Scale

COG OPERATING LLC
 Rig Layout-Closed Loop
 Interim reclamation plat

LOCATION VERIFICATION MAP



SCALE: 1" = 2000'

CONTOUR INTERVAL:
RED LAKE SE, N.M. - 10'

SEC. 24 TWP. 17-S RGE. 29-E

SURVEY _____ N.M.P.M.

COUNTY EDDY STATE NEW MEXICO


DESCRIPTION 2458' FSL & 2464' FWL

ELEVATION _____ 3611'

OPERATOR COG OPERATING, INC.

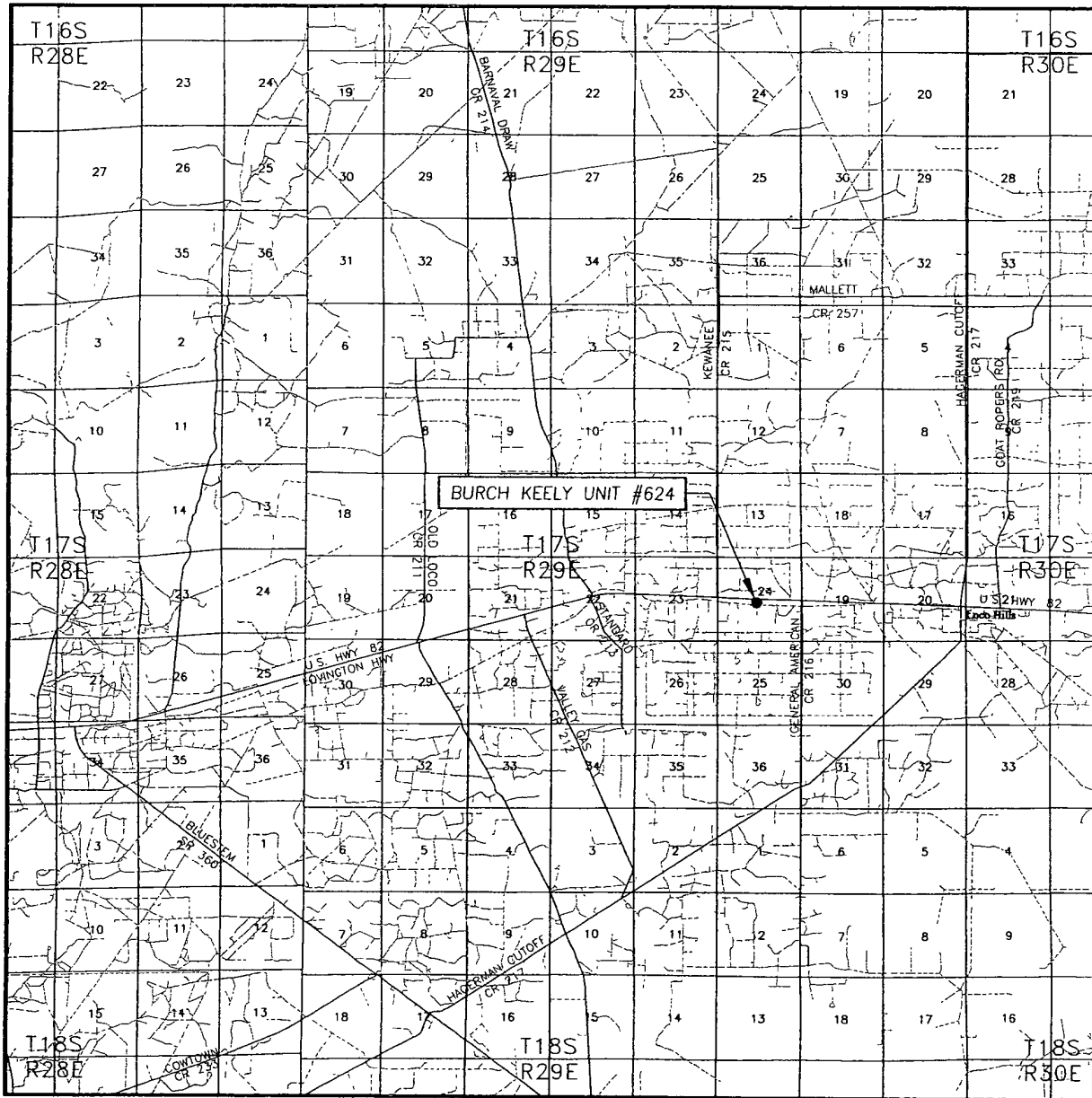
LEASE _____ BURCH KEELY UNIT

U.S.G.S. TOPOGRAPHIC MAP
RED LAKE SE, N.M.



PROVIDING SURVEYING SERVICES
SINCE 1946
JOHN WEST SURVEYING COMPANY
412 N DAL PASO
HOBBS, N.M. 88240
(575) 393-3117

VICINITY MAP



SCALE: 1" = 2 MILES

SEC. 24 TWP 17-S RGE. 29-E

SURVEY N.M.P.M


COUNTY EDDY STATE NEW MEXICO

DESCRIPTION 2458' FSL & 2464' FWL

ELEVATION 3611'

OPERATOR COG OPERATING, LLC

LEASE BURCH KEELY UNIT

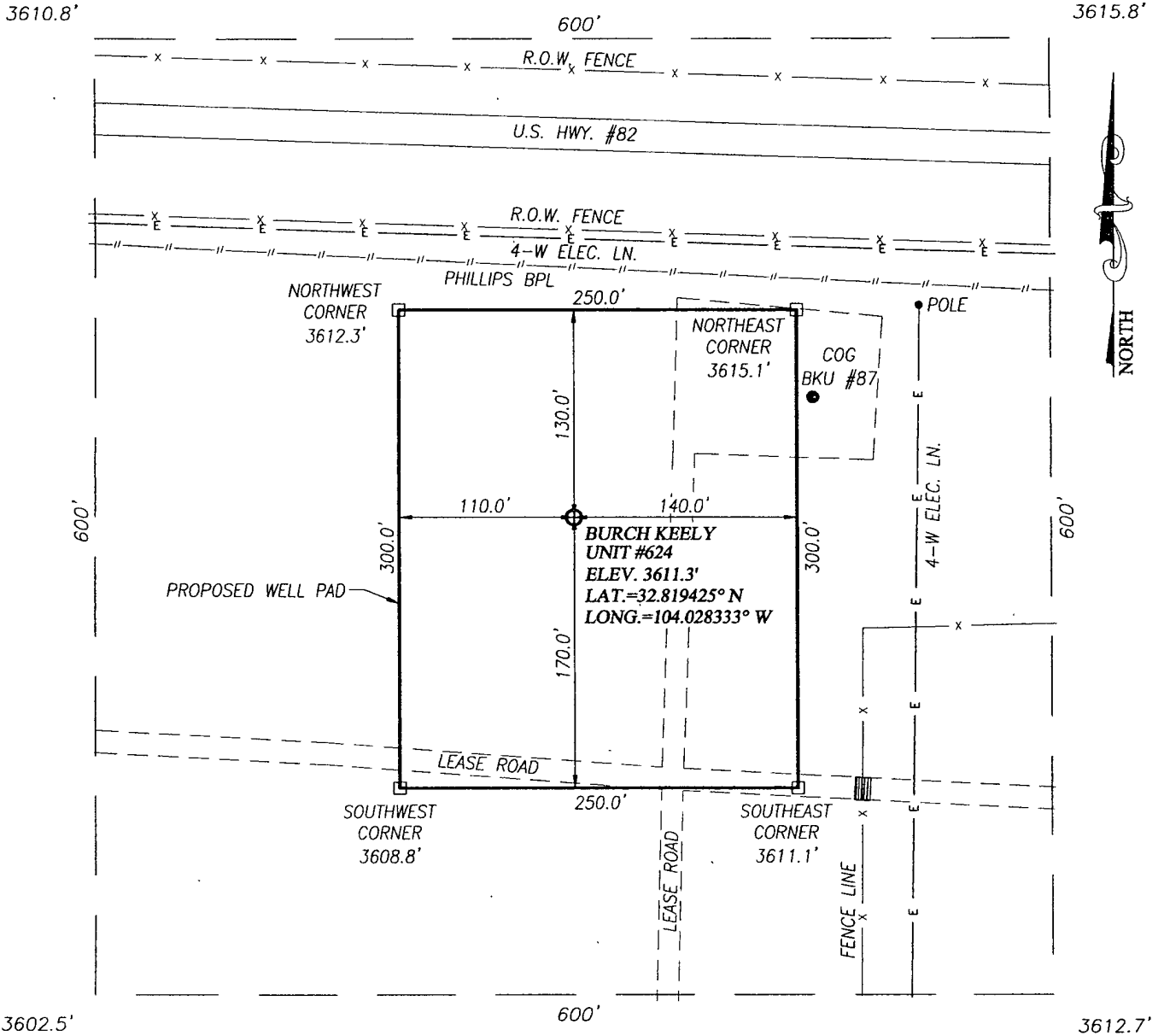


PROVIDING SURVEYING SERVICES
SINCE 1946

JOHN WEST SURVEYING COMPANY

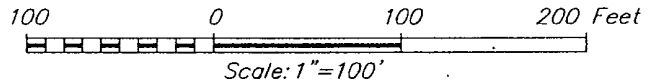
412 N DAL PASO
HOBBS, N.M. 88240
(575) 393-3117

SECTION 24, TOWNSHIP 17 SOUTH, RANGE 29 EAST, N.M.P.M.
 EDDY COUNTY NEW MEXICO



DIRECTIONS TO LOCATION

FROM THE INTERSECTION OF U.S. HWY. #82 AND CO. RD. #215 (KEWANNE RD.), GO EAST ON U.S. HWY. #82 APPROX. 0.7 MILES. TURN RIGHT AND GO SOUTH APPROX. 0.1 MILE. TURN RIGHT AND GO WEST APPROX. 0.3 MILES. TURN RIGHT AND GO NORTH APPROX. 130 FEET. THE LOCATION STAKE IS APPROX. 65 FEET WEST OF LEASE ROAD.



PROVIDING SURVEYING SERVICES SINCE 1946
JOHN WEST SURVEYING COMPANY
 412 N. DAL PASO
 HOBBS, N.M. 88240
 (575) 393-3117

COG OPERATING, LLC

BURCH KEELY UNIT #624 WELL
 LOCATED 2458 FEET FROM THE SOUTH LINE
 AND 2464 FEET FROM THE WEST LINE OF SECTION 24,
 TOWNSHIP 17 SOUTH, RANGE 29 EAST, N.M.P.M.,
 EDDY COUNTY, NEW MEXICO

| | | | |
|-------------------------|---------------------|------------|----------------|
| Survey Date: 12/8/10 | Sheet 1 of 1 Sheets | | |
| W.O. Number: 10.11.1798 | Dr By: DSS | Rev 1: N/A | |
| Date: 12/10/10 | Rel. W.O. 10111497 | 10111798 | Scale: 1"=100' |

Well Access Road Map



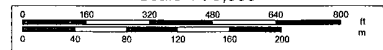
Data use subject to license

© DeLorme. XMap® 7

www.delorme.com



Scale 1 : 5,600



1" = 466.7 ft

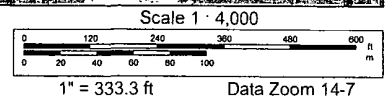
Data Zoom 14-4



Data use subject to license.

© DeLorme. XMap® 7.

www.delorme.com



Offset wells to Burch Keely Unit #624

| API# | Operator | County | Legal | Lease | Well# | Date Issued | Permitted Depth | Permit TVD | Images | Doc | Total Depth | Well Type | Well Status | Permit# |
|--------------|--|--------|--------------------|--------------------|-------|-------------|-----------------|------------|--------|------|-------------|-----------|---------------|----------------|
| 30-015-37131 | MARBOB ENERGY CORP | EDDY | S.25, T.17S, R.29E | BURCH KEELY UNIT | 923 | 7/15/2009 | 4,800 | | Yes | link | 4,800 | PO | Active Permit | TEMP66494260 |
| 30-015-37130 | MARBOB ENERGY CORP | EDDY | S:26, T:17S, R 29E | BURCH KEELY UNIT | 906 | 6/15/2009 | 4,800 | | Yes | link | 4,800 | PO | Active Permit | TEMP490492453 |
| 30-015-37132 | MARBOB ENERGY CORP | EDDY | S.26, T:17S, R 29E | BURCH KEELY UNIT | 908 | 6/15/2009 | 4,800 | | Yes | link | 4,800 | PO | Active Permit | TEMP928784043 |
| 30-015-37133 | MARBOB ENERGY CORP | EDDY | S 25, T:17S, R:29E | BURCH KEELY UNIT | 921 | 6/15/2009 | 4,800 | | Yes | link | 4,800 | PO | Active Permit | TEMP449606476 |
| 30-015-36345 | MARBOB ENERGY CORPORATION or MARBOB ENERGY CORP | EDDY | S-24, T-17S, R:29E | BURCH KEELY UNIT | 997 | 4/30/2008 | 4,800 | | Yes | link | 4,800 | PO | Active Permit | TEMP1654135219 |
| 30-015-36209 | MARBOB ENERGY CORPORATION or MARBOB ENERGY CORP | EDDY | S 24, T:17S, R:29E | BURCH KEELY UNIT | 994 | 3/8/2008 | 4,800 | | Yes | link | 4,800 | PO | Active Permit | TEMP738408828 |
| 30-015-35999 | CIMAREX ENERGY CO. OF COLORADO | EDDY | S.26, T:17S, R:29E | KEELY "26" FEDERAL | 003 | 12/12/2007 | 9,350 | | Yes | link | 9,350 | PO | Active Permit | TEMP1040967585 |
| 30-015-35926 | CIMAREX ENERGY CO OF COLORADO | EDDY | S.24, T:17S, R.29E | GRAYBURG DEEP UNIT | 23 | 11/23/2007 | 9,350 | | Yes | link | 9,350 | PO | Active | TEMP739806324 |
| 30-015-29766 | CONOCOPHILLIPS COMPANY | EDDY | S:25, T:17S, R 29E | GRAYBURG DEEP UNIT | 14 | 10/16/2007 | 11,400 | | Yes | link | 11,400 | O | Flowing | TEMP108226444 |
| 30-015-29766 | CONOCOPHILLIPS COMPANY | EDDY | S.25, T 17S, R 29E | GRAYBURG DEEP UNIT | 14 | 10/14/2007 | 11,400 | | Yes | link | 11,400 | O | Flowing | TEMP1396001896 |
| 30-015-35598 | CIMAREX ENERGY CO OF COLORADO or COG OPERATING LLC | EDDY | S.25, T:17S, R 29E | GRAYBURG DEEP UNIT | 22 | 5/4/2007 | 9,400 | | Yes | link | 9,280 | O | Active Permit | TEMP11904934 |
| 30-015-35564 | MARBOB ENERGY CORP | EDDY | S:24, T:17S, R:29E | BURCH KEELY | 984 | 4/24/2007 | 4,800 | | Yes | link | 6,230 | O | Active | TEMP795356125 |
| 30-015-35246 | MARBOB ENERGY CORP | EDDY | S:24, T.17S, R:29E | BURCH KEELY UNIT | 981 | 2/15/2007 | 4,800 | | Yes | link | 4,800 | PO | Active | TEMP969155828 |
| 30-015-35432 | MARBOB ENERGY CORPORATION or MARBOB ENERGY CORP | EDDY | S 24, T 17S, R.29E | BURCH KEELY UNIT | 982 | 2/15/2007 | 4,800 | | Yes | link | 4,570 | O | Active Permit | TEMP1626896370 |
| 30-015-35439 | MARBOB ENERGY CORP | EDDY | S 24, T.17S, R:29E | BURCH KEELY UNIT | 983 | 2/15/2007 | 4,800 | | Yes | link | 4,630 | O | Active Permit | TEMP716585405 |
| 30-015-35440 | MARBOB ENERGY CORP | EDDY | S.24, T:17S, R:29E | BURCH KEELY UNIT | 985 | 2/15/2007 | 4,800 | | Yes | link | 4,662 | O | Active Permit | TEMP1463459118 |
| | CIMAREX ENERGY | | | | | | | | | | | | | |

| | | | | | | | | | | | | | | |
|--------------|--|------|--------------------|--------------------|-----|------------|--------|--|-----|------|--------|----|---------------|------------------|
| 30-015-35025 | CO OF COLORADO | EDDY | S:26, T 17S, R:29E | KEELY 26 FEDERAL | 001 | 7/17/2006 | 11,600 | | No | link | 11,225 | G | Active Permit | TMP0000000079902 |
| 30-015-34776 | GRUY PETROLEUM MANAGEMENT CO or CIMAREX ENERGY CO OF COLORADO | EDDY | S:25, T:17S, R:29E | GRAYBURG DEEP | 21 | 4/7/2006 | 11,650 | | No | link | 11,650 | PG | Active Permit | TMP0000000079617 |
| 30-015-34905 | GRUY PETROLEUM MANAGEMENT CO. or CIMAREX ENERGY CO OF COLORADO | EDDY | S:24, T 17S, R 29E | GRAYBURG DEE; UNIT | 018 | 3/26/2006 | 12,500 | | No | link | 11,230 | PG | Active Permit | TEMP91947833 |
| 30-015-33805 | MARBOB ENERGY CORP | EDDY | S:13, T 17S, R:29E | BURCH KEELY UNIT | 391 | 12/28/2005 | 4,800 | | Yes | link | 4,800 | PO | Active | TEMP961422247 |
| 30-015-33809 | MARBOB ENERGY CORPORATION or MARBOB ENERGY CORP | EDDY | S:13, T:17S, R:29E | BURCH KEELY UNIT | 392 | 12/28/2005 | 4,800 | | Yes | link | 4,800 | O | Active | TEMP519052025 |
| 30-015-34214 | GRUY PETROLEUM MANAGEMENT CO. or CIMAREX ENERGY CO OF COLORADO | EDDY | S:19, T.17S, R.30E | GRAYBURG DEEP | 017 | 5/26/2005 | 12,500 | | No | link | 11,259 | G | Active Permit | TMP0000000079848 |
| 30-015-34905 | CIMAREX ENERGY CO OF COLORADO | EDDY | S:24, T:17S, R:29E | GRAYBURG DEEP UNIT | 018 | 5/26/2005 | 12,500 | | Yes | link | 11,230 | PG | Active Permit | TEMP722498241 |
| 30-015-34018 | MARBOB ENERGY CORP | EDDY | S:24, T:17S, R 29E | BURCH KEELY UNIT | 967 | 3/17/2005 | 4,800 | | No | link | 4,650 | O | Active | TEMP1039340767 |
| 30-015-34141 | GRUY PETROLEUM MANAGEMENT CO. or CIMAREX ENERGY CO OF COLORADO | EDDY | S:24, T:17S, R:29E | GRAYBURG DEEP UNIT | 016 | 2/26/2005 | 12,500 | | No | link | 12,500 | G | Active Permit | TEMP878610367 |
| 30-015-33803 | MARBOB ENERGY CORP | EDDY | S:13, T:17S, R:29E | BURCH KEELY UNIT | 959 | 9/15/2004 | 4,800 | | No | link | 4,650 | O | Active | TEMP440200298 |
| 30-015-33804 | MARBOB ENERGY CORP | EDDY | S:13, T:17S, R:29E | BURCH KEELY UNIT | 958 | 9/15/2004 | 4,800 | | No | link | 4,650 | G | Active | TEMP984819206 |
| 30-015-33805 | MARBOB ENERGY CORP | EDDY | S:13, T:17S, R 29E | BURCH KEELY UNIT | 960 | 9/15/2004 | 4,800 | | No | link | 4,800 | PO | Active | TEMP297125137 |
| 30-015-33806 | MARBOB ENERGY CORP | EDDY | S:13, T 17S, R:29E | BURCH KEELY UNIT | 961 | 9/15/2004 | 4,800 | | No | link | 4,580 | O | Active | TEMP1070427340 |
| 30-015-33808 | MARBOB ENERGY CORP | EDDY | S 13, T 17S, R 29E | BURCH KEELY UNIT | 963 | 9/15/2004 | 4,800 | | No | link | 4,650 | O | Active | TEMP1592329497 |
| 30-015-33815 | MARBOB ENERGY CORP | EDDY | S:19, T:17S, R:30E | BURCH KEELY UNIT | 973 | 9/15/2004 | 4,800 | | No | link | 4,654 | O | Active | TEMP1271715479 |

| | | | | | | | | | | | | | | |
|--------------|--------------------|------|--------------------|------------------|-----|-----------|-------|--|----|------|-------|----|--------|----------------|
| 30-015-33813 | MARBOB ENERGY CORP | EDDY | S.24, T.17S, R.29E | BURCH KEELY | 970 | 9/15/2004 | 4,800 | | No | link | 4,680 | O | Active | TEMP1482246168 |
| 30-015-33801 | MARBOB ENERGY CORP | EDDY | S:13, T 17S, R:29E | BURCH KEELY | 956 | 9/13/2004 | 4,800 | | No | link | 4,560 | O | Active | TEMP135698567 |
| 30-015-33802 | MARBOB ENERGY CORP | EDDY | S 13, T:17S, R:29E | BURCH KEELY UNIT | 957 | 9/13/2004 | 4,800 | | No | link | 4,650 | O | Active | TEMP282921123 |
| 30-015-33807 | MARBOB ENERGY CORP | EDDY | S 13, T 17S, R:29E | BURCH KEELY UNIT | 962 | 9/13/2004 | 4,800 | | No | link | 4,670 | O | Active | TEMP2000886856 |
| 30-015-33809 | MARBOB ENERGY CORP | EDDY | S:13, T:17S, R:29E | BURCH KEELY UNIT | 964 | 9/13/2004 | 4,800 | | No | link | 4,800 | O | Active | TEMP1275510941 |
| 30-015-33817 | MARBOB ENERGY CORP | EDDY | S:25, T:17S, R:29E | BURCH KEELY UNIT | 975 | 9/13/2004 | 4,800 | | No | link | 4,860 | O | Active | TEMP1984169366 |
| 30-015-33812 | MARBOB ENERGY CORP | EDDY | S.24, T:17S, R.29E | BURCH KEELY UNIT | 968 | 9/13/2004 | 4,800 | | No | link | 4,640 | O | Active | TEMP1750020488 |
| 30-015-33814 | MARBOB ENERGY CORP | EDDY | S 23, T 17S, R:29E | BURCH KEELY | 972 | 9/13/2004 | 4,800 | | No | link | 4,620 | O | Active | TEMP1291209439 |
| 30-015-32992 | MARBOB ENERGY CORP | EDDY | S:19, T:17S, R 30E | BURCH KEELY UNIT | 363 | 8/31/2004 | | | No | link | 4,750 | O | Active | TEMP416135160 |
| 30-015-33805 | MARBOB ENERGY CORP | EDDY | S 13, T 17S, R:29E | BURCH KEELY UNIT | 960 | 8/31/2004 | | | No | link | 4,800 | PO | Active | TEMP438872204 |
| 30-015-33806 | MARBOB ENERGY CORP | EDDY | S:13, T 17S, R:29E | BURCH KEELY UNIT | 961 | 8/31/2004 | | | No | link | 4,580 | O | Active | TEMP939374977 |
| 30-015-33807 | MARBOB ENERGY CORP | EDDY | S:13, T:17S, R:29E | BURCH KEELY UNIT | 962 | 8/31/2004 | | | No | link | 4,670 | O | Active | TEMP693889855 |
| 30-015-33808 | MARBOB ENERGY CORP | EDDY | S.13, T.17S, R:29E | BURCH KEELY UNIT | 963 | 8/31/2004 | | | No | link | 4,650 | O | Active | TEMP460732021 |
| 30-015-33809 | MARBOB ENERGY CORP | EDDY | S:13, T.17S, R:29E | BURCH KEELY UNIT | 964 | 8/31/2004 | | | No | link | 4,800 | O | Active | TEMP185646131 |
| 30-015-33815 | MARBOB ENERGY CORP | EDDY | S:19, T 17S, R:30E | BURCH KEELY UNIT | 973 | 8/31/2004 | | | No | link | 4,654 | O | Active | TEMP1864998459 |
| 30-015-33817 | MARBOB ENERGY CORP | EDDY | S:25, T 17S, R 29E | BURCH KEELY UNIT | 975 | 8/31/2004 | | | No | link | 4,860 | O | Active | TEMP1841711022 |
| 30-015-33812 | MARBOB ENERGY CORP | EDDY | S:24, T.17S, R:29E | BURCH KEELY UNIT | 968 | 8/31/2004 | | | No | link | 4,640 | O | Active | TEMP1216749930 |
| 30-015-33813 | MARBOB ENERGY CORP | EDDY | S:24, T.17S, R:29E | BURCH KEELY UNIT | 970 | 8/31/2004 | | | No | link | 4,680 | O | Active | TEMP549980087 |
| 30-015-33814 | MARBOB ENERGY CORP | EDDY | S.23, T 17S, R:29E | BURCH KEELY UNIT | 972 | 8/31/2004 | | | No | link | 4,620 | O | Active | TEMP742723961 |
| | MARBOB ENERGY | | | BURCH KEELY | | | | | | | | | | |

| | | | | | | | | | | | | | | |
|--------------|--------------------|------|--------------------|-----------------------|------|------------|--------|--|----|------|--------|---|--------|----------------|
| 30-015-33569 | CORP | EDDY | S 19, T:17S, R 30E | UNIT | 3610 | 8/2/2004 | 4,800 | | No | link | 4,832 | O | Active | TEMP433831366 |
| 30-015-33569 | MARBOB ENERGY CORP | EDDY | S 19, T:17S, R:30E | BURCH KEELY UNIT | 944 | 7/31/2004 | | | No | link | 4,832 | O | Active | TEMP330037453 |
| 30-015-32974 | MARBOB ENERGY CORP | EDDY | S:30, T:17S, R:30E | BURCH KEELY UNIT | 368 | 7/31/2004 | | | No | link | 4,950 | O | Active | TEMP1051334371 |
| 30-015-33343 | MARBOB ENERGY CORP | EDDY | S.25, T.17S, R.29E | BURCH KEELY UNIT | 922 | 3/25/2004 | 4,800 | | No | link | 4,920 | O | Active | TEMP2004715997 |
| 30-015-33343 | MARBOB ENERGY CORP | EDDY | S:25, T 17S, R:29E | BURCH KEELY UNIT | 369 | 2/29/2004 | | | No | link | 4,920 | O | Active | TEMP1647204711 |
| 30-015-32970 | MARBOB ENERGY CORP | EDDY | S 19, T:17S, R.30E | BURCH KEELY UNIT | 360 | 10/31/2003 | | | No | link | 4,730 | O | Active | TEMP1541325963 |
| 30-015-32969 | MARBOB ENERGY CORP | EDDY | S:19, T 17S, R:30E | BURCH KEELY UNIT | 359 | 10/31/2003 | | | No | link | 4,728 | O | Active | TEMP1595424550 |
| 30-015-32033 | MARBOB ENERGY CORP | EDDY | S:14, T:17S, R:29E | M DODD B DEEP FEDERAL | 003 | 9/24/2003 | 11,300 | | No | link | 11,300 | G | Active | TEMP484017318 |
| 30-015-32992 | MARBOB ENERGY CORP | EDDY | S:19, T:17S, R:30E | BURCH KEELY UNIT | 940 | 9/9/2003 | 4,800 | | No | link | 4,750 | O | Active | TEMP66949767 |
| 30-015-32033 | MARBOB ENERGY CORP | EDDY | S.14, T:17S, R.29E | M DODD B DEEP FEDERAL | 003 | 8/31/2003 | | | No | link | 11,300 | G | Active | TEMP1104437860 |
| 30-015-32969 | MARBOB ENERGY CORP | EDDY | S:19, T 17S, R:30E | BURCH KEELY UNIT | 934 | 8/26/2003 | 4,800 | | No | link | 4,728 | O | Active | TEMP1870303917 |
| 30-015-32970 | MARBOB ENERGY CORP | EDDY | S:19, T 17S, R:30E | BURCH KEELY UNIT | 935 | 8/26/2003 | 4,800 | | No | link | 4,730 | O | Active | TEMP1934556984 |
| 30-015-32973 | MARBOB ENERGY CORP | EDDY | S:30, T:17S, R 30E | BURCH KEELY UNIT | 945 | 8/25/2003 | 4,800 | | No | link | 5,000 | O | Active | TEMP1566352286 |
| 30-015-32974 | MARBOB ENERGY CORP | EDDY | S.30, T:17S, R:30E | BURCH KEELY UNIT | 947 | 8/25/2003 | 4,800 | | No | link | 4,950 | O | Active | TEMP1475872591 |
| 30-015-32973 | MARBOB ENERGY CORP | EDDY | S:30, T 17S, R:30E | BURCH KEELY UNIT | 366 | 7/31/2003 | | | No | link | 5,000 | O | Active | TEMP737060145 |
| 30-015-32786 | MARBOB ENERGY CORP | EDDY | S:18, T.17S, R:30E | BURCH KEELY UNIT | 352 | 7/29/2003 | | | No | link | 4,662 | O | Active | TEMP1549570835 |
| 30-015-32788 | MARBOB ENERGY CORP | EDDY | S.18, T:17S, R:30E | BURCH KEELY UNIT | 354 | 7/29/2003 | | | No | link | 4,719 | O | Active | TEMP1815047576 |
| 30-015-32782 | MARBOB ENERGY CORP | EDDY | S.18, T:17S, R.30E | BURCH KEELY UNIT | 346 | 7/1/2003 | | | No | link | 4,715 | O | Active | TEMP1576883403 |
| 30-015-32867 | MARBOB ENERGY CORP | EDDY | S:24, T:17S, R 29E | BURCH KEELY UNIT | 903 | 6/26/2003 | 4,800 | | No | link | 4,860 | O | Active | TEMP597126549 |
| | | | | BURCH | | | | | | | | | | |

| | | | | | | | | | | | | | | |
|--------------|--------------------|------|--------------------|------------------|-----|-----------|-------|--|----|------|-------|---|--------|----------------|
| 30-015-32867 | MARBOB ENERGY CORP | EDDY | S:24, T:17S, R:29E | KEELY UNIT | 365 | 5/31/2003 | | | No | link | 4,860 | O | Active | TEMP1664598919 |
| 30-015-32782 | MARBOB ENERGY CORP | EDDY | S:18, T:17S, R:30E | BURCH KEELY UNIT | 810 | 5/6/2003 | 4,800 | | No | link | 4,715 | O | Active | TEMP1406308729 |
| 30-015-32784 | MARBOB ENERGY CORP | EDDY | S:18, T:17S, R:30E | BURCH KEELY UNIT | 928 | 5/6/2003 | 4,800 | | No | link | 4,710 | O | Active | TEMP1136984499 |
| 30-015-32786 | MARBOB ENERGY CORP | EDDY | S:18, T:17S, R:30E | BURCH KEELY UNIT | 930 | 5/6/2003 | 4,800 | | No | link | 4,662 | O | Active | TEMP1107358834 |
| 30-015-32788 | MARBOB ENERGY CORP | EDDY | S:18, T:17S, R:30E | BURCH KEELY UNIT | 932 | 5/6/2003 | 4,800 | | No | link | 4,719 | O | Active | TEMP1175459389 |
| 30-015-32784 | MARBOB ENERGY CORP | EDDY | S:18, T:17S, R:30E | BURCH KEELY UNIT | 350 | 4/30/2003 | | | No | link | 4,710 | O | Active | TEMP428812811 |
| 30-015-32716 | MARBOB ENERGY CORP | EDDY | S:26, T:17S, R:29E | BURCH KEELY UNIT | 907 | 3/26/2003 | 4,800 | | No | link | 4,785 | O | Active | TEMP1745291309 |
| 30-015-32710 | MARBOB ENERGY CORP | EDDY | S:23, T:17S, R:29E | BURCH KEELY UNIT | 909 | 3/25/2003 | 4,800 | | No | link | 4,655 | O | Active | TEMP716723811 |
| 30-015-32712 | MARBOB ENERGY CORP | EDDY | S:24, T:17S, R:29E | BURCH KEELY UNIT | 917 | 3/25/2003 | 4,800 | | No | link | 4,760 | O | Active | TEMP742117238 |
| 30-015-32713 | MARBOB ENERGY CORP | EDDY | S:24, T:17S, R:29E | BURCH KEELY UNIT | 920 | 3/25/2003 | 4,800 | | No | link | 4,740 | O | Active | TEMP672477687 |
| 30-015-32701 | MARBOB ENERGY CORP | EDDY | S:24, T:17S, R:29E | BURCH KEELY UNIT | 919 | 3/24/2003 | 4,800 | | No | link | 4,712 | O | Active | TEMP604761881 |
| 30-015-32702 | MARBOB ENERGY CORP | EDDY | S:24, T:17S, R:29E | BURCH KEELY UNIT | 914 | 3/24/2003 | 4,800 | | No | link | 4,765 | O | Active | TEMP531659590 |
| 30-015-32757 | MARBOB ENERGY CORP | EDDY | S:24, T:17S, R:29E | BURCH KEELY UNIT | 916 | 3/24/2003 | 4,800 | | No | link | 4,670 | O | Active | TEMP1654340882 |
| 30-015-32756 | MARBOB ENERGY CORP | EDDY | S:23, T:17S, R:29E | BURCH KEELY UNIT | 913 | 3/24/2003 | 4,800 | | No | link | 4,650 | O | Active | TEMP1909217110 |
| 30-015-32755 | MARBOB ENERGY CORP | EDDY | S:23, T:17S, R:29E | BURCH KEELY UNIT | 910 | 3/24/2003 | 4,800 | | No | link | 4,630 | O | Active | TEMP1089564036 |
| 30-015-32700 | MARBOB ENERGY CORP | EDDY | S:24, T:17S, R:29E | BURCH KEELY UNIT | 339 | 3/24/2003 | | | No | link | 4,650 | O | Active | TEMP2129137822 |
| 30-015-32701 | MARBOB ENERGY CORP | EDDY | S:24, T:17S, R:29E | BURCH KEELY UNIT | 335 | 2/28/2003 | | | No | link | 4,712 | O | Active | TEMP188594345 |
| 30-015-32702 | MARBOB ENERGY CORP | EDDY | S:24, T:17S, R:29E | BURCH KEELY UNIT | 334 | 2/28/2003 | | | No | link | 4,765 | O | Active | TEMP2005610158 |
| 30-015-32710 | MARBOB ENERGY CORP | EDDY | S:23, T:17S, R:29E | BURCH KEELY UNIT | 342 | 2/28/2003 | | | No | link | 4,655 | O | Active | TEMP1968718592 |

| | | | | | | | | | | | | | | |
|--------------|------------------------|------|--------------------|--------------------|-----|-----------|-------|--|----|------|--------|---|---------|----------------|
| 30-015-32712 | MARBOB ENERGY CORP | EDDY | S:24, T 17S, R:29E | BURCH KEELY UNIT | 344 | 2/28/2003 | | | No | link | 4,760 | O | Active | TEMP1583751864 |
| 30-015-32713 | MARBOB ENERGY CORP | EDDY | S 24, T.17S, R:29E | BURCH KEELY UNIT | 345 | 2/28/2003 | | | No | link | 4,740 | O | Active | TEMP2050986319 |
| 30-015-32755 | MARBOB ENERGY CORP | EDDY | S 23, T 17S, R:29E | BURCH KEELY UNIT | 337 | 2/28/2003 | | | No | link | 4,630 | O | Active | TEMP2112990020 |
| 30-015-32756 | MARBOB ENERGY CORP | EDDY | S.23, T.17S, R.29E | BURCH KEELY UNIT | 338 | 2/28/2003 | | | No | link | 4,650 | O | Active | TEMP1472383102 |
| 30-015-32757 | MARBOB ENERGY CORP | EDDY | S:24, T.17S, R.29E | BURCH KEELY UNIT | 340 | 2/28/2003 | | | No | link | 4,670 | O | Active | TEMP1175741700 |
| 30-015-32700 | MARBOB ENERGY CORP | EDDY | S:24, T.17S, R:29E | BURCH KEELY UNIT | 339 | 2/28/2003 | | | No | link | 4,650 | O | Active | TEMP950624264 |
| 30-015-32716 | MARBOB ENERGY CORP | EDDY | S.26, T:17S, R 29E | BURCH KEELY UNIT | 341 | 2/28/2003 | | | No | link | 4,785 | O | Active | TEMP1317451888 |
| 30-015-03083 | CONOCOPHILLIPS COMPANY | EDDY | S:25, T:17S, R:29E | GRAYBURG DEEP UNIT | 005 | 1/1/2003 | 0 | | No | link | 7,226 | O | Pumping | TEMP2063605159 |
| 30-015-29766 | CONOCOPHILLIPS COMPANY | EDDY | S.25, T.17S, R:29E | GRAYBURG DEEP UNIT | 014 | 1/1/2003 | | | No | link | 11,400 | O | Flowing | TEMP1865465933 |
| 30-015-32427 | MARBOB ENERGY CORP | EDDY | S:24, T.17S, R 29E | BURCH KEELY UNIT | 888 | 8/30/2002 | 4,800 | | No | link | 4,785 | O | Active | TEMP875370848 |
| 30-015-32428 | MARBOB ENERGY CORP | EDDY | S.24, T:17S, R.29E | BURCH KEELY UNIT | 889 | 8/30/2002 | 4,800 | | No | link | 4,755 | O | Active | TEMP595139448 |
| 30-015-32429 | MARBOB ENERGY CORP | EDDY | S:24, T:17S, R:29E | BURCH KEELY UNIT | 890 | 8/30/2002 | 4,800 | | No | link | 4,765 | O | Active | TEMP459323086 |
| 30-015-32430 | MARBOB ENERGY CORP | EDDY | S.24, T.17S, R 29E | BURCH KEELY UNIT | 891 | 8/30/2002 | 4,800 | | No | link | 4,750 | O | Active | TEMP244633200 |
| 30-015-32427 | MARBOB ENERGY CORP | EDDY | S:24, T:17S, R.29E | BURCH KEELY UNIT | 324 | 7/31/2002 | | | No | link | 4,785 | O | Active | TEMP926255683 |
| 30-015-32428 | MARBOB ENERGY CORP | EDDY | S 24, T 17S, R:29E | BURCH KEELY UNIT | 325 | 7/31/2002 | | | No | link | 4,755 | O | Active | TEMP797404065 |
| 30-015-32429 | MARBOB ENERGY CORP | EDDY | S.24, T.17S, R:29E | BURCH KEELY UNIT | 326 | 7/31/2002 | | | No | link | 4,765 | O | Active | TEMP1843897134 |
| 30-015-32430 | MARBOB ENERGY CORP | EDDY | S:24, T 17S, R:29E | BURCH KEELY UNIT | 327 | 7/31/2002 | | | No | link | 4,750 | O | Active | TEMP912435371 |
| 30-015-32211 | MARBOB ENERGY CORP | EDDY | S.24, T:17S, R.29E | BURCH KEELY UNIT | 878 | 2/19/2002 | | | No | link | 4,705 | O | Active | TEMP1879127332 |
| 30-015-32211 | MARBOB ENERGY CORP | EDDY | S.24, T:17S, R.29E | BURCH KEELY UNIT | 323 | 1/31/2002 | | | No | link | 4,705 | O | Active | TEMP1466431627 |
| | | | | BURCH | | | | | | | | | | |

| | | | | | | | | | | | | | | |
|--------------|--------------------|------|--------------------|--------------------|------|------------|-------|--|----|------|-------|----|-----------|----------------|
| 30-015-32098 | MARBOB ENERGY CORP | EDDY | S:24, T:17S, R:29E | KEELY UNIT | 884 | 11/9/2001 | 4,800 | | No | link | 4,664 | O | Active | TEMP642049182 |
| 30-015-32108 | MARBOB ENERGY CORP | EDDY | S:19, T:17S, R:30E | BURCH KEELY UNIT | 322 | 11/9/2001 | | | No | link | 4,737 | O | Pumping | TEMP808377256 |
| 30-015-32098 | MARBOB ENERGY CORP | EDDY | S:24, T:17S, R:29E | BURCH KEELY UNIT | 321 | 10/31/2001 | | | No | link | 4,664 | O | Active | TEMP323602501 |
| 30-015-32004 | MARBOB ENERGY CORP | EDDY | S:24, T:17S, R:29E | BURCH KEELY UNIT | 316 | 10/3/2001 | | | No | link | 4,640 | O | Pumping | TEMP1315082572 |
| 30-015-32005 | MARBOB ENERGY CORP | EDDY | S:24, T:17S, R:29E | BURCH KEELY UNIT | 317 | 10/3/2001 | | | No | link | 4,580 | O | Pumping | TEMP1288919647 |
| 30-015-32006 | MARBOB ENERGY CORP | EDDY | S:23, T:17S, R:29E | BURCH KEELY UNIT | 318 | 10/3/2001 | | | No | link | 4,640 | O | Pumping | TEMP1250060008 |
| 30-015-31526 | MARBOB ENERGY CORP | EDDY | S:24, T:17S, R:29E | BURCH KEELY UNIT | 314 | 9/7/2001 | | | No | link | 4,671 | O | Pumping | TEMP162929827 |
| 30-015-30062 | MARBOB ENERGY CORP | EDDY | S:24, T:17S, R:29E | BURCH KEELY UNIT | 807 | 8/7/2001 | | | No | link | | PO | Unknown | TEMP1966733601 |
| 30-015-30672 | EOG RESOURCES INC | EDDY | S:26, T:17S, R:29E | GRAYBURG DEEP UNIT | 016 | 12/7/2000 | | | No | link | | PG | Unknown | TEMP1988638334 |
| 30-015-31434 | MARBOB ENERGY CORP | EDDY | S:23, T:17S, R:29E | BURCH KEELY UNIT | 312Q | 11/6/2000 | | | No | link | 4,580 | O | Pumping | TEMP479608820 |
| 30-015-31246 | MARBOB ENERGY CORP | EDDY | S:26, T:17S, R:29E | BURCH KEELY UNIT | 307 | 7/10/2000 | | | No | link | 4,805 | O | Pumping | TEMP1123555885 |
| 30-015-04388 | MARBOB ENERGY CORP | EDDY | S:30, T:17S, R:30E | BURCH KEELY UNIT | 142 | 2/1/2000 | | | No | link | 4,900 | G | Active | TEMP1336609898 |
| 30-015-30641 | MARBOB ENERGY CORP | EDDY | S:24, T:17S, R:29E | BURCH KEELY UNIT | 311 | 4/26/1999 | | | No | link | 4,608 | O | Pumping | TEMP128746827 |
| 30-015-30642 | MARBOB ENERGY CORP | EDDY | S:24, T:17S, R:29E | BURCH KEELY UNIT | 315 | 4/23/1999 | | | No | link | 4,670 | O | Pumping | TEMP402303295 |
| 30-015-29494 | MARBOB ENERGY CORP | EDDY | S:24, T:17S, R:29E | BURCH KEELY UNIT | 841 | 3/4/1999 | | | No | link | 4,970 | X | Cancelled | TEMP1503665373 |
| 30-015-29528 | MARBOB ENERGY CORP | EDDY | S:24, T:17S, R:29E | BURCH KEELY UNIT | 849 | 3/4/1999 | | | No | link | | X | Cancelled | TEMP1790585358 |
| 30-015-27655 | MARBOB ENERGY CORP | EDDY | S:13, T:17S, R:29E | KEELY A FED | 036 | 2/10/1999 | 0 | | No | link | 0 | PO | Unknown | TEMP1454469706 |
| 30-015-28091 | MARBOB ENERGY CORP | EDDY | S:18, T:17S, R:30E | BURCH KEELY UNIT | 810 | 2/10/1999 | | | No | link | 4,715 | X | Cancelled | TEMP905002304 |
| 30-015-29493 | MARBOB ENERGY CORP | EDDY | S:23, T:17S, R:29E | BURCH KEELY UNIT | 844 | 1/5/1999 | | | No | link | | PO | Unknown | TEMP1484694658 |
| | MARBOB ENERGY | | | BURCH KEELY | | | | | | | | | | |

| | | | | | | | | | | | | | | |
|--------------|--------------------|------|--------------------|-----------------------|-----|------------|---|--|----|------|--------|----|---------|----------------|
| 30-015-29492 | CORP | EDDY | S:23, T:17S, R:29E | UNIT | 299 | 12/14/1998 | | | No | link | 4,580 | O | Pumping | TEMP1445835019 |
| 30-015-30490 | MARBOB ENERGY CORP | EDDY | S:25, T:17S, R:29E | BURCH KEELY UNIT | 294 | 11/4/1998 | | | No | link | 4,920 | O | Pumping | TEMP2099672830 |
| 30-015-30491 | MARBOB ENERGY CORP | EDDY | S:24, T:17S, R:29E | BURCH KEELY UNIT | 305 | 11/4/1998 | | | No | link | 4,675 | O | Pumping | TEMP2119679773 |
| 30-015-30453 | MARBOB ENERGY CORP | EDDY | S:26, T:17S, R:29E | BURCH KEELY UNIT | 290 | 10/22/1998 | | | No | link | 4,723 | O | Pumping | TEMP889237466 |
| 30-015-29456 | EOG RESOURCES INC | EDDY | S:26, T:17S, R:29E | GRAYBURG DEEP UNIT | 016 | 7/30/1998 | | | No | link | | PG | Unknown | TEMP1512766004 |
| 30-015-30116 | MARBOB ENERGY CORP | EDDY | S:23, T:17S, R:29E | BURCH KEELY UNIT | 287 | 3/4/1998 | | | No | link | 4,775 | O | Pumping | TEMP142075121 |
| 30-015-29958 | MARBOB ENERGY CORP | EDDY | S:25, T:17S, R:29E | BURCH KEELY UNIT | 284 | 11/18/1997 | | | No | link | 4,806 | O | Pumping | TEMP623195899 |
| 30-015-29916 | MARBOB ENERGY CORP | EDDY | S:25, T:17S, R:29E | BURCH KEELY UNIT | 277 | 11/7/1997 | | | No | link | 4,856 | O | Pumping | TEMP1334037080 |
| 30-015-29921 | MARBOB ENERGY CORP | EDDY | S:25, T:17S, R:29E | BURCH KEELY UNIT | 280 | 11/6/1997 | | | No | link | 4,800 | O | Pumping | TEMP124771287 |
| 30-015-29889 | MARBOB ENERGY CORP | EDDY | S:13, T:17S, R:29E | BURCH KEELY UNIT | 286 | 10/10/1997 | | | No | link | 4,606 | O | Pumping | TEMP766547777 |
| 30-015-29809 | MARBOB ENERGY CORP | EDDY | S:23, T:17S, R:29E | BURCH KEELY UNIT | 278 | 8/20/1997 | | | No | link | 4,821 | O | Pumping | TEMP930949046 |
| 30-015-29722 | MARBOB ENERGY CORP | EDDY | S:19, T:17S, R:30E | BURCH KEELY UNIT | 282 | 7/9/1997 | | | No | link | 4,796 | O | Pumping | TEMP1982400274 |
| 30-015-29301 | MARBOB ENERGY CORP | EDDY | S:24, T:17S, R:29E | BURCH KEELY UNIT | 271 | 6/23/1997 | | | No | link | 4,775 | O | Pumping | TEMP1255906980 |
| 30-015-29286 | MARBOB ENERGY CORP | EDDY | S:14, T:17S, R:29E | M DODD B DEEP FEDERAL | 001 | 5/28/1997 | | | No | link | 10,995 | O | Pumping | TEMP1240886449 |
| 30-015-27653 | MARBOB ENERGY CORP | EDDY | S:24, T:17S, R:29E | KEELY A FED | 034 | 4/14/1997 | 0 | | No | link | 0 | PO | Unknown | TEMP1303263388 |
| 30-015-29511 | MARBOB ENERGY CORP | EDDY | S:24, T:17S, R:29E | BURCH KEELY UNIT | 281 | 4/9/1997 | | | No | link | 4,770 | O | Pumping | TEMP1216924748 |
| 30-015-29512 | MARBOB ENERGY CORP | EDDY | S:19, T:17S, R:30E | BURCH KEELY UNIT | 276 | 4/9/1997 | | | No | link | 4,775 | O | Pumping | TEMP1243087673 |
| 30-015-27783 | MARBOB ENERGY CORP | EDDY | S:23, T:17S, R:29E | BURCH KEELY UNIT | 272 | 3/17/1997 | | | No | link | 4,718 | O | Pumping | TEMP1243273208 |
| 30-015-29454 | EOG RESOURCES INC | EDDY | S:23, T:17S, R:29E | GRAYBURG DEEP UNIT | 013 | 3/13/1997 | | | No | link | 11,365 | G | Active | TEMP1378103889 |
| 30-015-29311 | MARBOB ENERGY CORP | EDDY | S:26, T:17S, R:29E | BURCH KEELY UNIT | 273 | 12/18/1996 | | | No | link | 4,813 | O | Pumping | TEMP2090427345 |
| | | | | BURCH | | | | | | | | | | |

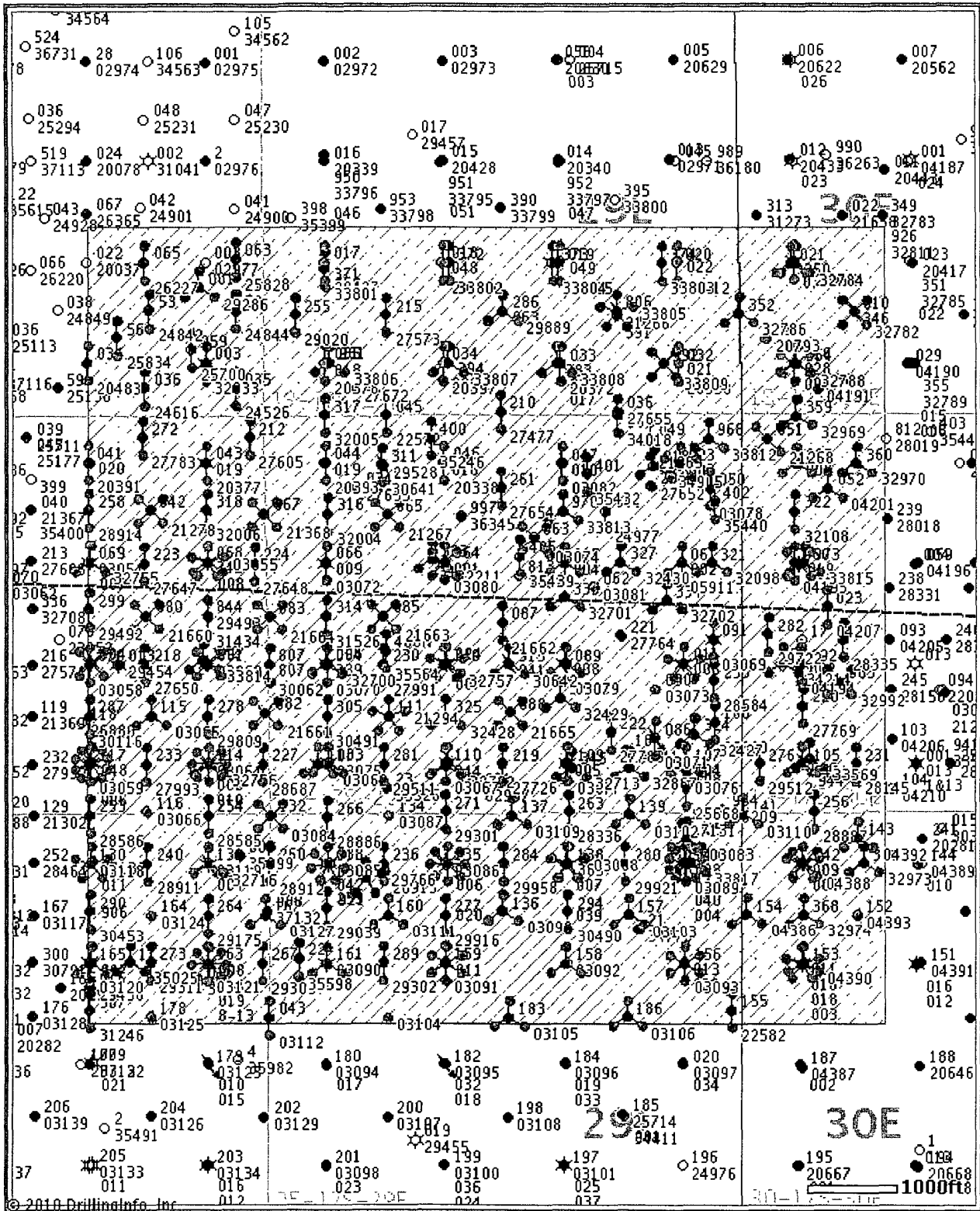
| | | | | | | | | | | | | | | |
|--------------|--------------------|------|--------------------|------------------|-----|------------|---|--|----|------|-------|----|-----------|----------------|
| 30-015-29302 | MARBOB ENERGY CORP | EDDY | S:25, T:17S, R:29E | KEELY UNIT | 289 | 12/17/1996 | | | No | link | 4,828 | O | Pumping | TEMP1277837668 |
| 30-015-29303 | MARBOB ENERGY CORP | EDDY | S:26, T:17S, R:29E | BURCH KEELY UNIT | 267 | 12/17/1996 | | | No | link | 4,820 | O | Pumping | TEMP1015054169 |
| 30-015-29175 | MARBOB ENERGY CORP | EDDY | S:26, T:17S, R:29E | BURCH KEELY UNIT | 264 | 9/20/1996 | | | No | link | 4,840 | O | Pumping | TEMP2060893624 |
| 30-015-29039 | MARBOB ENERGY CORP | EDDY | S:25, T:17S, R:29E | BURCH KEELY UNIT | 259 | 7/9/1996 | | | No | link | 4,845 | O | Pumping | TEMP1821268750 |
| 30-015-29020 | MARBOB ENERGY CORP | EDDY | S:13, T:17S, R:29E | BURCH KEELY UNIT | 255 | 6/25/1996 | | | No | link | 4,600 | O | Pumping | TEMP1575814276 |
| 30-015-28017 | MARBOB ENERGY CORP | EDDY | S:24, T:17S, R:29E | BURCH KEELY UNIT | 813 | 6/21/1996 | | | No | link | | PO | Unknown | TEMP1229230493 |
| 30-015-27988 | MARBOB ENERGY CORP | EDDY | S:13, T:17S, R:29E | BURCH KEELY UNIT | 806 | 5/31/1996 | | | No | link | 8,450 | X | Cancelled | TEMP1065027198 |
| 30-015-27990 | MARBOB ENERGY CORP | EDDY | S:24, T:17S, R:29E | BURCH KEELY UNIT | 807 | 5/31/1996 | | | No | link | | PO | Unknown | TEMP2051069468 |
| 30-015-28911 | MARBOB ENERGY CORP | EDDY | S:26, T:17S, R:29E | BURCH KEELY UNIT | 240 | 3/26/1996 | | | No | link | 4,750 | O | Pumping | TEMP480464806 |
| 30-015-28912 | MARBOB ENERGY CORP | EDDY | S:25, T:17S, R:29E | BURCH KEELY UNIT | 260 | 3/26/1996 | | | No | link | 4,840 | O | Pumping | TEMP441605167 |
| 30-015-28913 | MARBOB ENERGY CORP | EDDY | S:25, T:17S, R:29E | BURCH KEELY UNIT | 236 | 3/26/1996 | | | No | link | 4,786 | O | Pumping | TEMP710929397 |
| 30-015-28914 | MARBOB ENERGY CORP | EDDY | S:23, T:17S, R:29E | BURCH KEELY UNIT | 258 | 3/26/1996 | | | No | link | 4,555 | O | Pumping | TEMP701310674 |
| 30-015-28886 | MARBOB ENERGY CORP | EDDY | S:25, T:17S, R:29E | BURCH KEELY UNIT | 266 | 3/25/1996 | | | No | link | 4,810 | O | Pumping | TEMP79947420 |
| 30-015-28887 | MARBOB ENERGY CORP | EDDY | S:19, T:17S, R:30E | BURCH KEELY UNIT | 256 | 3/25/1996 | | | No | link | 4,845 | O | Pumping | TEMP106495094 |
| 30-015-28336 | MARBOB ENERGY CORP | EDDY | S:24, T:17S, R:29E | BURCH KEELY UNIT | 263 | 1/22/1996 | | | No | link | 4,795 | O | Pumping | TEMP1335128386 |
| 30-015-28145 | MARBOB ENERGY CORP | EDDY | S:19, T:17S, R:30E | BURCH KEELY UNIT | 231 | 1/1/1996 | | | No | link | 4,805 | O | Pumping | TEMP2026191247 |
| 30-015-27672 | MARBOB ENERGY CORP | EDDY | S:13, T:17S, R:29E | KEELY A FED | 033 | 11/4/1995 | 0 | | No | link | 0 | PO | Unknown | TEMP735004587 |
| 30-015-28687 | MARBOB ENERGY CORP | EDDY | S:23, T:17S, R:29E | BURCH KEELY UNIT | 227 | 10/5/1995 | | | No | link | 4,670 | O | Pumping | TEMP1651099178 |
| 30-015-28584 | MARBOB ENERGY CORP | EDDY | S:24, T:17S, R:29E | BURCH KEELY UNIT | 235 | 6/12/1995 | | | No | link | 4,650 | O | Pumping | TEMP1120545769 |
| | | | | BURCH | | | | | | | | | | |

| | | | | | | | | | | | | | | |
|--------------|--------------------|------|--------------------|------------------|-----|------------|---|--|----|------|-------|----|---------|----------------|
| 30-015-28585 | MARBOB ENERGY CORP | EDDY | S:26, T:17S, R:29E | KEELY UNIT | 254 | 6/12/1995 | | | No | link | 4,710 | O | Pumping | TEMP993963381 |
| 30-015-28586 | MARBOB ENERGY CORP | EDDY | S:26, T:17S, R:29E | BURCH KEELY UNIT | 253 | 6/12/1995 | | | No | link | 4,752 | O | Pumping | TEMP1343315382 |
| 30-015-28335 | MARBOB ENERGY CORP | EDDY | S:19, T:17S, R:30E | BURCH KEELY UNIT | 247 | 4/27/1995 | | | No | link | 4,715 | O | Pumping | TEMP1375527020 |
| 30-015-27764 | MARBOB ENERGY CORP | EDDY | S:24, T:17S, R:29E | BURCH KEELY UNIT | 221 | 7/8/1994 | | | No | link | 4,650 | O | Pumping | TEMP232623573 |
| 30-015-27769 | MARBOB ENERGY CORP | EDDY | S:19, T:17S, R:30E | BURCH KEELY UNIT | 220 | 7/8/1994 | | | No | link | 4,600 | O | Pumping | TEMP965099753 |
| 30-015-27477 | MARBOB ENERGY CORP | EDDY | S:13, T:17S, R:29E | BURCH KEELY UNIT | 210 | 6/13/1994 | | | No | link | 4,600 | O | Pumping | TEMP1812873435 |
| 30-015-27647 | MARBOB ENERGY CORP | EDDY | S:23, T:17S, R:29E | BURCH KEELY UNIT | 223 | 6/9/1994 | | | No | link | 4,600 | O | Pumping | TEMP455661561 |
| 30-015-27991 | MARBOB ENERGY CORP | EDDY | S:24, T:17S, R:29E | BURCH KEELY UNIT | 230 | 5/31/1994 | | | No | link | 4,625 | O | Pumping | TEMP1869152399 |
| 30-015-27993 | MARBOB ENERGY CORP | EDDY | S:23, T:17S, R:29E | BURCH KEELY UNIT | 233 | 5/31/1994 | | | No | link | 4,600 | O | Pumping | TEMP1677932196 |
| 30-015-27648 | MARBOB ENERGY CORP | EDDY | S:23, T:17S, R:29E | BURCH KEELY UNIT | 224 | 5/27/1994 | | | No | link | 4,625 | O | Pumping | TEMP1762268826 |
| 30-015-27726 | MARBOB ENERGY CORP | EDDY | S:24, T:17S, R:29E | BURCH KEELY UNIT | 219 | 5/6/1994 | | | No | link | 4,800 | O | Pumping | TEMP1601960233 |
| 30-015-27652 | MARBOB ENERGY CORP | EDDY | S:24, T:17S, R:29E | BURCH KEELY UNIT | 234 | 5/1/1994 | | | No | link | 4,650 | O | Pumping | TEMP1656847627 |
| 30-015-27654 | MARBOB ENERGY CORP | EDDY | S:24, T:17S, R:29E | BURCH KEELY UNIT | 261 | 5/1/1994 | | | No | link | 4,622 | O | Pumping | TEMP1329426313 |
| 30-015-27605 | MARBOB ENERGY CORP | EDDY | S:23, T:17S, R:29E | BURCH KEELY UNIT | 212 | 4/12/1994 | | | No | link | 4,600 | O | Pumping | TEMP286589872 |
| 30-015-27573 | MARBOB ENERGY CORP | EDDY | S:13, T:17S, R:29E | BURCH KEELY UNIT | 215 | 3/2/1994 | | | No | link | 4,600 | O | Pumping | TEMP986048049 |
| 30-015-27788 | MARBOB ENERGY CORP | EDDY | S:24, T:17S, R:29E | BURCH KEELY UNIT | 222 | 11/24/1993 | 0 | | No | link | 4,600 | O | Pumping | TEMP489950186 |
| 30-015-27650 | MARBOB ENERGY CORP | EDDY | S:23, T:17S, R:29E | BURCH KEELY UNIT | 218 | 9/22/1993 | | | No | link | 4,600 | O | Pumping | TEMP1505641309 |
| 30-015-27656 | MARBOB ENERGY CORP | EDDY | S:13, T:17S, R:29E | KEELY C FEDERAL | 063 | 8/26/1993 | 0 | | No | link | 4,600 | PO | Unknown | TEMP1074337792 |
| 30-015-26890 | MARBOB ENERGY CORP | EDDY | S:24, T:17S, R:29E | BURCH KEELY UNIT | 106 | 3/1/1992 | | | No | link | 3,645 | PO | Pumping | TEMP818024220 |
| | MARBOB ENERGY | | | | | | | | | | | | | |

| | | | | | | | | | | | | | | |
|--------------|--------------------|------|--------------------|------------------|-----|-----------|---|--|----|------|-------|----|---------|----------------|
| 30-015-26227 | CORP | EDDY | S:14, T:17S, R:29E | M DODD B | 065 | 1/1/1990 | | | No | link | 4,585 | PO | Pumping | TEMP290855809 |
| 30-015-25668 | MARBOB ENERGY CORP | EDDY | S 24, T 17S, R:29E | BURCH KEELY UNIT | 108 | 3/1/1989 | | | No | link | 6,900 | PO | Pumping | TEMP1655883610 |
| 30-015-25834 | MARBOB ENERGY CORP | EDDY | S:14, T:17S, R:29E | M DODD B | 064 | 2/1/1988 | | | No | link | 4,580 | O | Pumping | TEMP161532277 |
| 30-015-25828 | MARBOB ENERGY CORP | EDDY | S:14, T:17S, R:29E | M DODD B | 063 | 12/1/1987 | | | No | link | 4,545 | O | Pumping | TEMP257719502 |
| 30-015-25700 | MARBOB ENERGY CORP | EDDY | S:14, T:17S, R:29E | M DODD B | 059 | 10/1/1987 | | | No | link | 4,585 | PO | Pumping | TEMP2083906347 |
| 30-015-24977 | MARBOB ENERGY CORP | EDDY | S:24, T:17S, R:29E | BURCH KEELY UNIT | 048 | 8/1/1985 | | | No | link | 3,400 | PO | Pumping | TEMP1084821008 |
| 30-015-24844 | MARBOB ENERGY CORP | EDDY | S 14, T 17S, R:29E | M DODD B | 039 | 6/1/1984 | | | No | link | 3,466 | O | Pumping | TEMP746073410 |
| 30-015-24842 | MARBOB ENERGY CORP | EDDY | S:14, T:17S, R:29E | M DODD B | 037 | 5/1/1984 | | | No | link | 3,450 | O | Pumping | TEMP501757858 |
| 30-015-24616 | MARBOB ENERGY CORP | EDDY | S:14, T 17S, R:29E | M DODD B | 036 | 3/1/1984 | | | No | link | 3,445 | PO | Pumping | TEMP90507257 |
| 30-015-24526 | MARBOB ENERGY CORP | EDDY | S:14, T:17S, R:29E | M DODD B | 035 | 8/1/1983 | | | No | link | 3,500 | PO | Pumping | TEMP551851836 |
| 30-015-22572 | MARBOB ENERGY CORP | EDDY | S:24, T 17S, R:29E | BURCH KEELY UNIT | 045 | 9/1/1978 | 0 | | No | link | 0 | O | Pumping | TEMP1579114431 |
| 30-015-22582 | MARBOB ENERGY CORP | EDDY | S:25, T:17S, R:29E | BURCH KEELY UNIT | 155 | 9/1/1978 | 0 | | No | link | 0 | O | Pumping | TEMP1684535630 |
| 30-015-21661 | MARBOB ENERGY CORP | EDDY | S:23, T:17S, R:29E | BURCH KEELY UNIT | 082 | 2/1/1976 | 0 | | No | link | 3,552 | O | Pumping | TEMP567983646 |
| 30-015-21665 | MARBOB ENERGY CORP | EDDY | S:24, T:17S, R:29E | BURCH KEELY UNIT | 088 | 1/1/1976 | 0 | | No | link | 3,570 | O | Pumping | TEMP1672212989 |
| 30-015-21660 | MARBOB ENERGY CORP | EDDY | S 23, T:17S, R:29E | BURCH KEELY UNIT | 080 | 12/1/1975 | 0 | | No | link | 3,575 | O | Pumping | TEMP542974967 |
| 30-015-21662 | MARBOB ENERGY CORP | EDDY | S 24, T:17S, R:29E | BURCH KEELY UNIT | 087 | 12/1/1975 | 0 | | No | link | 3,550 | O | Pumping | TEMP1874590911 |
| 30-015-21663 | MARBOB ENERGY CORP | EDDY | S:24, T:17S, R:29E | BURCH KEELY UNIT | 085 | 12/1/1975 | 0 | | No | link | 0 | O | Pumping | TEMP1901138585 |
| 30-015-21664 | MARBOB ENERGY CORP | EDDY | S:24, T:17S, R:29E | BURCH KEELY UNIT | 083 | 12/1/1975 | 0 | | No | link | 3,575 | O | Pumping | TEMP1644126319 |
| 30-015-21265 | MARBOB ENERGY CORP | EDDY | S 24, T 17S, R:29E | BURCH KEELY UNIT | 049 | 11/1/1975 | 0 | | No | link | 3,550 | O | Pumping | TEMP1613690641 |
| 30-015-21294 | MARBOB ENERGY CORP | EDDY | S:24, T 17S, R:29E | BURCH KEELY UNIT | 111 | 12/1/1974 | 0 | | No | link | 0 | O | Pumping | TEMP23785354 |
| 30-015-21368 | MARBOB ENERGY CORP | EDDY | S 23, T:17S, R:29E | BURCH KEELY UNIT | 067 | 12/1/1974 | 0 | | No | link | 0 | O | Pumping | TEMP1614106038 |
| | | | | BURCH | | | | | | | | | | |

| | | | | | | | | | | | | | |
|--------------|---|------|--------------------|------------------|-----|----------|---|----|------|-------|----|---------------|----------------|
| 30-015-21267 | MARBOB ENERGY CORP | EDDY | S:24, T 17S, R 29E | KEELY UNIT | 065 | 9/1/1974 | 0 | No | link | 3,425 | O | Pumping | TEMP1738734034 |
| 30-015-21268 | MARBOB ENERGY CORP | EDDY | S:19, T 17S, R 30E | BURCH KEELY UNIT | 051 | 9/1/1974 | 0 | No | link | 3,300 | O | Pumping | TEMP1370914085 |
| 30-015-21278 | MARBOB ENERGY CORP | EDDY | S:23, T:17S, R:29E | BURCH KEELY UNIT | 042 | 8/1/1974 | 0 | No | link | 3,403 | O | Pumping | TEMP1157378445 |
| 30-015-21266 | STEVENS OPERATING CORPORATION or HANAGAN PETROLEUM CORP | EDDY | S:13, T:17S, R:29E | PRE-ONGARD WELL | 024 | 1/1/1970 | | No | link | | PO | Active Permit | TEMP1373978076 |

Offset wells to Burch Keely Unit #624



© 2010 Drilling Info, Inc. All rights reserved. All data and information is provided "As Is" and subject to the DI subscription agreement.