

Form 3160-3  
(June 2015)UNITED STATES  
DEPARTMENT OF THE INTERIOR  
BUREAU OF LAND MANAGEMENT

## APPLICATION FOR PERMIT TO DRILL OR REENTER

FORM APPROVED  
OMB No. 1004-0137  
Expires: January 31, 2018

1a. Type of work: <input checked="" type="checkbox"/> DRILL <input type="checkbox"/> REENTER		5. Lease Serial No. NMNM082896
1b. Type of Well: <input checked="" type="checkbox"/> Oil Well <input type="checkbox"/> Gas Well <input type="checkbox"/> Other		6. If Indian, Allottee or Tribe Name
1c. Type of Completion: <input type="checkbox"/> Hydraulic Fracturing <input checked="" type="checkbox"/> Single Zone <input type="checkbox"/> Multiple Zone		7. If Unit or CA Agreement, Name and No.
2. Name of Operator OXY USA INCORPORATED		8. Lease Name and Well No. NIMITZ MDP1 12-1 FEDERAL COM
3a. Address 5 Greenway Plaza, Suite 110, Houston, TX 77046		9. API Well No. 30 015 47445
3b. Phone No. (include area code) (713) 366-5716		10. Field and Pool, or Exploratory COTTON DRAW BONE SPRING/COTTO
4. Location of Well (Report location clearly and in accordance with any State requirements. *) At surface SESE / 830 FSL / 795 FEL / LAT 32.2274257 / LONG -103.8282351 At proposed prod. zone NWNW / 20 FNL / 940 FEL / LAT 32.2541338 / LONG -103.8286821		11. Sec., T. R. M. or Blk. and Survey or Area SEC 12/T24S/R30E/NMP
14. Distance in miles and direction from nearest town or post office* 16 miles		12. County or Parish EDDY
15. Distance from proposed* location to nearest property or lease line, ft. (Also to nearest drig. unit line, if any) 20 feet		13. State NM
16. No of acres in lease 880		17. Spacing Unit dedicated to this well 320.0
18. Distance from proposed location* to nearest well, drilling, completed, applied for, on this lease, ft. 35 feet		20. BLM/BIA Bond No. in file FED: ESB000226
21. Elevations (Show whether DF, KDB, RT, GL, etc.) 3522 feet		22. Approximate date work will start* 07/01/2020
		23. Estimated duration 45 days
24. Attachments		

The following, completed in accordance with the requirements of Onshore Oil and Gas Order No. 1, and the Hydraulic Fracturing rule per 43 CFR 3162.3-3 (as applicable)

- |  |   |
|--|---|
| 1. Well plat certified by a registered surveyor.   | 4. Bond to cover the operations unless covered by an existing bond on file (see Item 20 above). |
| 2. A Drilling Plan.  | 5. Operator certification.  |
| 3. A Surface Use Plan (if the location is on National Forest System Lands, the SUPO must be filed with the appropriate Forest Service Office). | 6. Such other site specific information and/or plans as may be requested by the BLM.            |

25. Signature (Electronic Submission)	Name (Printed/Typed) SARAH CHAPMAN / Ph: (713) 366-5716	Date 09/17/2019
Title Regulatory Specialist		
Approved by (Signature) (Electronic Submission)	Name (Printed/Typed) Cody Layton / Ph: (575) 234-5959	Date 08/28/2020
Title Assistant Field Manager Lands & Minerals		
Office Carlsbad Field Office		

Application approval does not warrant or certify that the applicant holds legal or equitable title to those rights in the subject lease which would entitle the applicant to conduct operations thereon.

Conditions of approval, if any, are attached.

Title 18 U.S.C. Section 1001 and Title 43 U.S.C. Section 1212, make it a crime for any person knowingly and willfully to make to any department or agency of the United States any false, fictitious or fraudulent statements or representations as to any matter within its jurisdiction.



(Continued on page 2)

\*(Instructions on page 2)

Entered - KMS NMOCB

District I  
1625 N. French Dr., Hobbs, NM 88240  
Phone: (575) 393-6161 Fax: (575) 393-0720  
District II  
811 S. First St., Artesia, NM 88210  
Phone: (575) 748-1283 Fax: (505) 334-6170  
District III  
1000 Rio Brazos Road, Aztec, NM 87410  
Phone: (505) 334-6178 Fax: (505) 334-6170  
District IV  
1220 S. St. Francis Dr., Santa Fe, NM 87505  
Phone: (505) 476-3460 Fax: (505) 476-3462

State of New Mexico  
Energy, Minerals & Natural Resources Department  
OIL CONSERVATION DIVISION  
1220 South St. Francis Dr.  
Santa Fe, NM 87505

Form C-102  
Revised August 1, 2011  
Submit one copy to appropriate  
District Office

☐ AMENDED REPORT

WELL LOCATION AND ACREAGE DEDICATION PLAT

API Number <b>30.015.47445</b>	Pool Code <b>13367</b>	Pool Name <b>Cotton draw; Bore Spring</b>
Property Code <b>329328</b>	Property Name <b>NIMITZ MDP1 "12.1" FEDERAL COM</b>	Well Number <b>14H</b>
OGRID No. <b>16696</b>	Operator Name <b>OXY USA INC.</b>	Elevation <b>3522.4'</b>

Surface Location

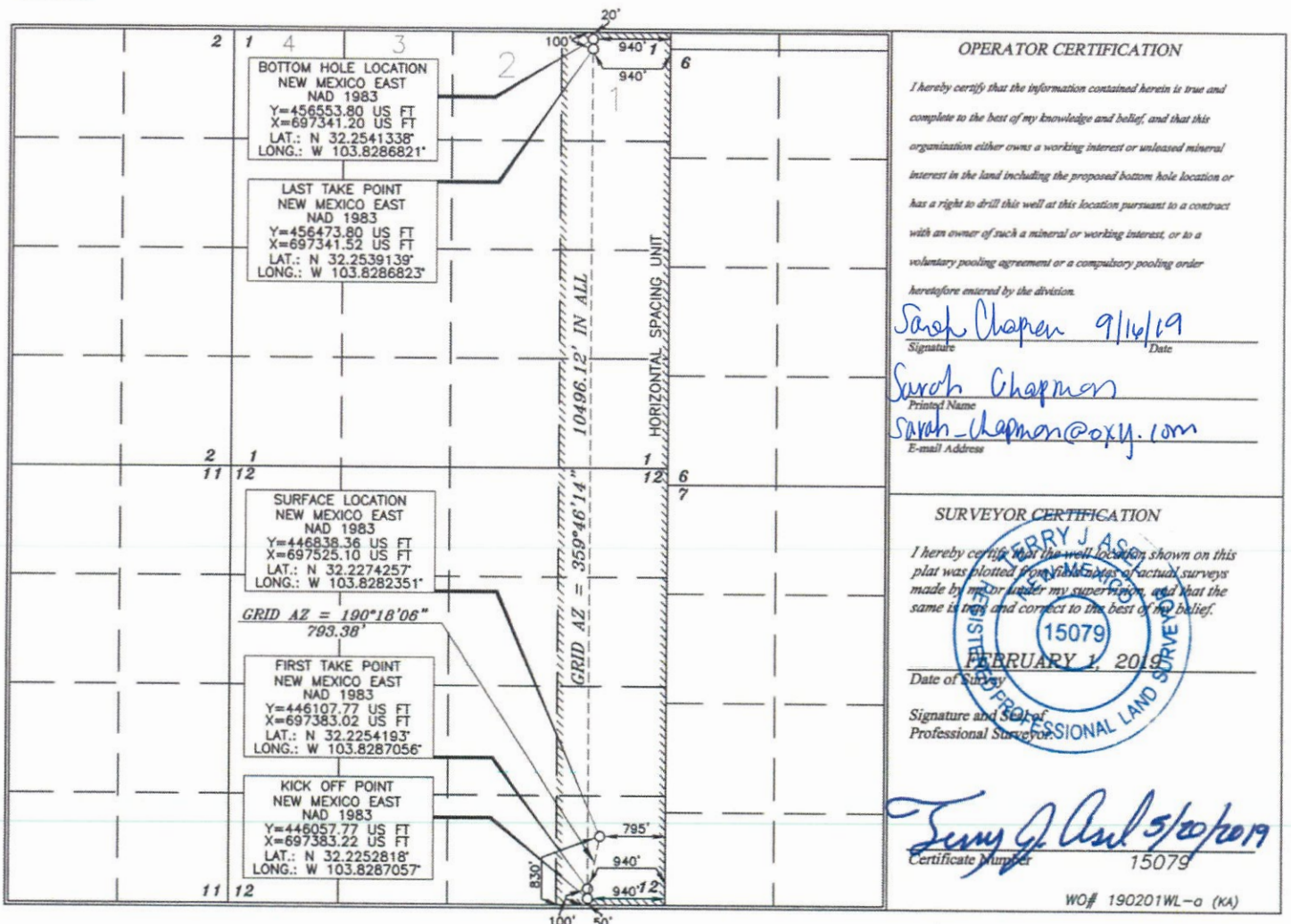
UL or lot no.	Section	Township	Range	Lot Idn	Feet from the	North/South line	Feet from the	East/West line	County
<b>P</b>	<b>12</b>	<b>24 SOUTH</b>	<b>30 EAST, N.M.P.M.</b>		<b>830'</b>	<b>SOUTH</b>	<b>795'</b>	<b>EAST</b>	<b>EDDY</b>

Bottom Hole Location If Different From Surface

UL or lot no.	Section	Township	Range	Lot Idn	Feet from the	North/South line	Feet from the	East/West line	County
<b>1</b>	<b>1</b>	<b>24 SOUTH</b>	<b>30 EAST, N.M.P.M.</b>		<b>20'</b>	<b>NORTH</b>	<b>940'</b>	<b>EAST</b>	<b>EDDY</b>

Dedicated Acres <b>320</b>	Joint or Infill	Consolidation Code	Order No.
-------------------------------	-----------------	--------------------	-----------

No allowable will be assigned to this completion until all interests have been consolidated or a non-standard unit has been approved by the division.



OPERATOR CERTIFICATION

I hereby certify that the information contained herein is true and complete to the best of my knowledge and belief, and that this organization either owns a working interest or unleased mineral interest in the land including the proposed bottom hole location or has a right to drill this well at this location pursuant to a contract with an owner of such a mineral or working interest, or to a voluntary pooling agreement or a compulsory pooling order heretofore entered by the division.

**Sarah Chapman** 9/16/19  
Signature Date

**Sarah Chapman**  
Printed Name  
**sarah\_chapman@oxy.com**  
E-mail Address

SURVEYOR CERTIFICATION

I hereby certify that the well location shown on this plat was plotted from the best of actual surveys made by me or under my supervision, and that the same is true and correct to the best of my belief.

**ERRY J. AS**  
15079  
FEBRUARY 1, 2019  
Date of Survey

Signature and Seal of  
Professional Surveyor

**ERRY J. AS** 5/20/2019  
Certificate Number 15079

WO# 190201WL-a (KA)

Intent ☒ As Drilled ☐

API #

Operator Name:  OXY USA Inc.	Property Name:  NIMITZ HDP 12-1 Federal Conn	Well Number  14H
------------------------------------	--	------------------------

Kick Off Point (KOP)

UL V	Section 12	Township 24S	Range 30E	Lot	Feet 50	From N/S South	Feet 940	From E/W East	County EDDY
Latitude 32.2252818					Longitude -103.8287057				NAD NAD83

First Take Point (FTP)

UL V	Section 12	Township 24S	Range 30E	Lot	Feet 100	From N/S South	Feet 940	From E/W East	County EDDY
Latitude 32.2254193					Longitude -103.8287022				NAD NAD83

Last Take Point (LTP)

UL 1	Section 1	Township 24S	Range 30E	Lot	Feet 100	From N/S North	Feet 940	From E/W East	County EDDY
Latitude 32.2539139					Longitude -103.8286823				NAD NAD83

Is this well the defining well for the Horizontal Spacing Unit? ☐

Is this well an infill well? ☐

If infill is yes please provide API if available, Operator Name and well number for Defining well for Horizontal Spacing Unit.

API #		
Operator Name:	Property Name:	Well Number



District I  
1625 N. French Dr., Hobbs, NM 88240  
District II  
811 S. First St., Artesia, NM 88210  
District III  
1000 Rio Brazos Road, Aztec, NM 87410  
District IV  
1220 S. St. Francis Dr., Santa Fe, NM 87505

State of New Mexico  
Energy, Minerals and Natural Resources Department  
Oil Conservation Division  
1220 South St. Francis Dr.  
Santa Fe, NM 87505

Submit Original  
to Appropriate  
District Office

## GAS CAPTURE PLAN

Date: 07-18-2019

☒ Original

Operator & OGRID No.: OXY USA INC. - 16696

☐ Amended - Reason for Amendment: \_\_\_\_\_

This Gas Capture Plan outlines actions to be taken by the Operator to reduce well/production facility flaring/venting for new completion (new drill, recomple to new zone, re-frac) activity.

*Note: Form C-129 must be submitted and approved prior to exceeding 60 days allowed by Rule (Subsection A of 19.15.18.12 NMAC).*

### Well(s)/Production Facility – Name of facility

The well(s) that will be located at the production facility are shown in the table below.

Well Name	API	Well Location (ULSTR)	Footages	Expected MCF/D	Flared or Vent	Comments
Nimitz MDP1 12_1 FED COM 11H	Pending	D-13-T24S-R30E	826' FNL 287' FWL	2,500	0	
Nimitz MDP1 12_1 FED COM 12H	Pending	N-12-T24S-R30E	615' FSL 1703' FWL	2,500	0	
Nimitz MDP1 12_1 FED COM 13H	Pending	C-13-T24S-R30E	498' FNL 2405' FWL	2,500	0	
Nimitz MDP1 12_1 FED COM 14H	Pending	P-12-T24S-R30E	830' FSL 795' FEL	2,500	0	
Nimitz MDP1 12_1 FED COM 21H	Pending	D-13-T24S-R30E	798' FNL 276' FWL	5,500	0	
Nimitz MDP1 12_1 FED COM 22H	Pending	D-13-T24S-R30E	892' FNL 311' FWL	5,500	0	
Nimitz MDP1 12_1 FED COM 23H	Pending	N-12-T24S-R30E	644' FSL 1766' FWL	5,500	0	
Nimitz MDP1 12_1 FED COM 24H	Pending	C-13-T24S-R30E	428' FNL 2405' FWL	5,500	0	
Nimitz MDP1 12_1 FED COM 25H	Pending	P-12-T24S-R30E	830' FSL 1350' FEL	5,500	0	
Nimitz MDP1 12_1 FED COM 26H	Pending	P-12-T24S-R30E	830' FSL 730' FEL	5,500	0	
Nimitz MDP1 12_1 FED COM 41H	Pending	D-13-T24S-R30E	986' FNL 345' FWL	7,200	0	
Nimitz MDP1 12_1 FED COM 42H	Pending	D-13-T24S-R30E	1047' FNL 368' FWL	7,200	0	
Nimitz MDP1 12_1 FED COM 43H	Pending	N-12-T24S-R30E	674' FSL 1830' FWL	7,200	0	
Nimitz MDP1 12_1 FED COM 44H	Pending	N-12-T24S-R30E	716' FSL 1921' FWL	7,200	0	
Nimitz MDP1 12_1 FED COM 45H	Pending	P-12-T24S-R30E	439' FSL 1138' FEL	7,200	0	
Nimitz MDP1 12_1 FED COM 46H	Pending	P-12-T24S-R30E	115' FSL 140' FEL	7,200	0	

Nimitz MDP1 12_1 FED COM 171H	Pending	M-12-T24S-R30E	275' FSL 67' FWL	4,200	0	
Nimitz MDP1 12_1 FED COM 172H	Pending	N-12-T24S-R30E	585' FSL 1639' FWL	4,200	0	
Nimitz MDP1 12_1 FED COM 173H	Pending	C-13-T24S-R30E	363' FNL 2405' FWL	4,200	0	
Nimitz MDP1 12_1 FED COM 174H	Pending	C-13-T24S-R30E	293' FNL 2405' FWL	4,200	0	
Nimitz MDP1 12_1 FED COM 175H	Pending	P-12-T24S-R30E	439' FSL 1068' FEL	4,200	0	
Nimitz MDP1 12_1 FED COM 176H	Pending	P-12-T24S-R30E	439' FSL 968' FEL	4,200	0	
Nimitz MDP1 13 FED COM 11H	Pending	D-13-T24S-R30E	953' FNL 333' FWL	1,700	0	
Nimitz MDP1 13 FED COM 12H	Pending	N-12-T24S-R30E	630' FSL 1734' FWL	1,700	0	
Nimitz MDP1 13 FED COM 13H	Pending	C-13-T24S-R30E	533' FNL 2405' FWL	1,700	0	
Nimitz MDP1 13 FED COM 14H	Pending	P-12-T24S-R30E	830' FSL 660' FEL	1,700	0	
Nimitz MDP1 13 FED COM 21H	Pending	D-13-T24S-R30E	859' FNL 299' FWL	3,700	0	
Nimitz MDP1 13 FED COM 22H	Pending	D-13-T24S-R30E	925' FNL 323' FWL	3,700	0	
Nimitz MDP1 13 FED COM 23H	Pending	N-12-T24S-R30E	659' FSL 1798' FWL	3,700	0	
Nimitz MDP1 13 FED COM 24H	Pending	C-13-T24S-R30E	463' FNL 2405' FWL	3,700	0	
Nimitz MDP1 13 FED COM 25H	Pending	P-12-T24S-R30E	830' FSL 760' FEL	3,700	0	
Nimitz MDP1 13 FED COM 26H	Pending	P-12-T24S-R30E	830' FSL 695' FEL	3,700	0	
Nimitz MDP1 13 FED COM 41H	Pending	D-13-T24S-R30E	1014' FNL 356' FWL	5,000	0	
Nimitz MDP1 13 FED COM 42H	Pending	D-13-T24S-R30E	1080' FNL 380' FWL	5,000	0	
Nimitz MDP1 13 FED COM 43H	Pending	N-12-T24S-R30E	689' FSL 1862' FWL	5,000	0	
Nimitz MDP1 13 FED COM 44H	Pending	N-12-T24S-R30E	704' FSL 1893' FWL	5,000	0	
Nimitz MDP1 13 FED COM 45H	Pending	P-12-T24S-R30E	439' FSL 1103' FEL	5,000	0	
Nimitz MDP1 13 FED COM 46H	Pending	P-12-T24S-R30E	80' FSL 140' FEL	5,000	0	
Nimitz MDP1 13 FED COM 171H	Pending	M-12-T24S-R30E	275' FSL 32' FWL	2,800	0	
Nimitz MDP1 13 FED COM 172H	Pending	N-12-T24S-R30E	600' FSL 1671' FWL	2,800	0	
Nimitz MDP1 13 FED COM 173H	Pending	C-13-T24S-R30E	328' FNL 2405' FWL	2,800	0	
Nimitz MDP1 13 FED COM 174H	Pending	C-13-T24S-R30E	393' FNL 2405' FWL	2,800	0	

Nimitz MDP1 13 FED COM 175H	Pending	P-12-T24S-R30E	439' FSL 1033' FEL	2,800	0	
Nimitz MDP1 13 FED COM 176H	Pending	P-12-T24S-R30E	439' FSL 998' FEL	2,800	0	

### **Gathering System and Pipeline Notification**

Well(s) will be connected to a production facility after flowback operations are complete, where a gas transporter system is in place. The gas produced from production facility is dedicated to Enterprise Field Services, LLC (“Enterprise”) and is connected to Enterprise low/high pressure gathering system located in Eddy County, New Mexico. OXY USA INC. (“OXY”) provides (periodically) to Enterprise a drilling, completion and estimated first production date for wells that are scheduled to be drilled in the foreseeable future. In addition, OXY and Enterprise have periodic conference calls to discuss changes to drilling and completion schedules. Gas from these wells will be processed at Enterprise’s Processing Plant located in Sec. 36, Twn. 24S, Rng. 30E, Eddy County, New Mexico. The actual flow of the gas will be based on compression operating parameters and gathering system pressures.

### **Flowback Strategy**

After the fracture treatment/completion operations, well(s) will be produced to temporary production tanks and gas will be flared or vented. During flowback, the fluids and sand content will be monitored. When the produced fluids contain minimal sand, the wells will be turned to production facilities. Gas sales should start as soon as the wells start flowing through the production facilities, unless there are operational issues on Enterprise system at that time. Based on current information, it is OXY’s belief the system can take this gas upon completion of the well(s).

Safety requirements during cleanout operations from the use of underbalanced air cleanout systems may necessitate that sand and non-pipeline quality gas be vented and/or flared rather than sold on a temporary basis.

### **Alternatives to Reduce Flaring**

Below are alternatives considered from a conceptual standpoint to reduce the amount of gas flared.

- Power Generation – On lease
  - Only a portion of gas is consumed operating the generator, remainder of gas will be flared
- Compressed Natural Gas – On lease
  - Gas flared would be minimal, but might be uneconomical to operate when gas volume declines
- NGL Removal – On lease
  - Plants are expensive, residue gas is still flared, and uneconomical to operate when gas volume declines

# PECOS DISTRICT

## DRILLING CONDITIONS OF APPROVAL

<b>OPERATOR'S NAME:</b>	OXY USA INCORPORATED
<b>WELL NAME &amp; NO.:</b>	NIMITZ MDP1 12-1 FEDERAL COM 14H
<b>SURFACE HOLE FOOTAGE:</b>	830'/S & 795'/E
<b>BOTTOM HOLE FOOTAGE:</b>	20'/N & 940'/E
<b>LOCATION:</b>	Section 12, T.24 S., R.30 E., NMP
<b>COUNTY:</b>	Eddy County, New Mexico

COA

H2S	<input type="radio"/> Yes	<input checked="" type="radio"/> No	
Potash	<input type="radio"/> None	<input checked="" type="radio"/> Secretary	<input type="radio"/> R-111-P
Cave/Karst Potential	<input type="radio"/> Low	<input checked="" type="radio"/> Medium	<input type="radio"/> High
Cave/Karst Potential	<input type="radio"/> Critical		
Variance	<input type="radio"/> None	<input checked="" type="radio"/> Flex Hose	<input type="radio"/> Other
Wellhead	<input type="radio"/> Conventional	<input type="radio"/> Multibowl	<input checked="" type="radio"/> Both
Other	<input type="checkbox"/> 4 String Area	<input type="checkbox"/> Capitan Reef	<input type="checkbox"/> WIPP
Other	<input type="checkbox"/> Fluid Filled	<input checked="" type="checkbox"/> Cement Squeeze	<input type="checkbox"/> Pilot Hole
Special Requirements	<input type="checkbox"/> Water Disposal	<input checked="" type="checkbox"/> COM	<input type="checkbox"/> Unit

### A. HYDROGEN SULFIDE

Hydrogen Sulfide (H2S) monitors shall be installed prior to drilling out the surface shoe. If H2S is detected in concentrations greater than 100 ppm, the Hydrogen Sulfide area shall meet Onshore Order 6 requirements, which includes equipment and personnel/public protection items. If Hydrogen Sulfide is encountered, provide measured values and formations to the BLM.

### B. CASING

#### Casing Design:

1. The **13-3/8** inch surface casing shall be set at approximately **512** feet (a minimum of **70 feet (Eddy County)** into the Rustler Anhydrite and above the salt) and cemented to the surface.
  - a. If cement does not circulate to the surface, the appropriate BLM office shall be notified and a temperature survey utilizing an electronic type temperature survey with surface log readout will be used or a cement bond log shall be run to verify the top of the cement. Temperature survey will be run a minimum of six hours after pumping cement and ideally between 8-10 hours after completing the cement job.

- b. Wait on cement (WOC) time for a primary cement job will be a minimum of **24 hours in the Potash Area** or 500 pounds compressive strength, whichever is greater. (This is to include the lead cement)
  - c. Wait on cement (WOC) time for a remedial job will be a minimum of 4 hours after bringing cement to surface or 500 pounds compressive strength, whichever is greater.
  - d. If cement falls back, remedial cementing will be done prior to drilling out that string.
2. The **9-5/8** inch intermediate casing shall be set at approximately **4180** feet. The minimum required fill of cement behind the **9-5/8** inch intermediate casing is:

**Option 1 (Single Stage):**

- Cement to surface. If cement does not circulate see B.1.a, c-d above.  
**Wait on cement (WOC) time for a primary cement job is to include the lead cement slurry due to cave/karst or potash.**

**Option 2:**

Operator has proposed a DV tool, the depth may be adjusted as long as the cement is changed proportionally. The DV tool may be cancelled if cement circulates to surface on the first stage.

- a. First stage to DV tool: Cement to circulate. If cement does not circulate off the DV tool, contact the appropriate BLM office before proceeding with second stage cement job.
  - b. Second stage above DV tool:
    - Cement to surface. If cement does not circulate, contact the appropriate BLM office.  
**Wait on cement (WOC) time for a primary cement job is to include the lead cement slurry due to cave/karst or potash.**
- ❖ In **Medium Cave/Karst Areas** if cement does not circulate to surface on the first two casing strings, the cement on the 3rd casing string must come to surface.
- ❖ In **Secretary Potash Areas** if cement does not circulate to surface on the first two casing strings, the cement on the 3rd casing string must come to surface.
3. The minimum required fill of cement behind the **5-1/2** inch production casing is:

**Option 1 (Single Stage):**



- Cement should tie-back at least **500 feet** into previous casing string. Operator shall provide method of verification.

### **Option 2:**

Operator has proposed a DV tool, the depth may be adjusted as long as the cement is changed proportionally. The DV tool may be cancelled if cement circulates to surface on the first stage.

- First stage to DV tool: Cement to circulate. If cement does not circulate off the DV tool, contact the appropriate BLM office before proceeding with second stage cement job.
- Second stage above DV tool:
  - Cement should tie-back at least **500 feet** into previous casing string. Operator shall provide method of verification.

**Operator has proposed to pump down 9-5/8" X 5-1/2" annulus. Operator must run a CBL from TD of the 5-1/2" casing to surface. Submit results to BLM.**

### **C. PRESSURE CONTROL**

- Variance approved to use flex line from BOP to choke manifold. Manufacturer's specification to be readily available. No external damage to flex line. Flex line to be installed as straight as possible (no hard bends).'
- 

### **Option 1:**

- Minimum working pressure of the blowout preventer (BOP) and related equipment (BOPE) required for drilling below the surface casing shoe shall be **3000 (3M)** psi.
- Minimum working pressure of the blowout preventer (BOP) and related equipment (BOPE) required for drilling below the intermediate casing shoe shall be **3000 (3M)** psi.

### **Option 2:**

- Operator has proposed a multi-bowl wellhead assembly. This assembly will only be tested when installed on the surface casing. Minimum working pressure of the blowout preventer (BOP) and related equipment (BOPE) required for drilling below the surface casing shoe shall be **3000 (3M)** psi.

- a. Wellhead shall be installed by manufacturer's representatives, submit documentation with subsequent sundry.
- b. If the welding is performed by a third party, the manufacturer's representative shall monitor the temperature to verify that it does not exceed the maximum temperature of the seal.
- c. Manufacturer representative shall install the test plug for the initial BOP test.
- d. If the cement does not circulate and one inch operations would have been possible with a standard wellhead, the well head shall be cut off, cementing operations performed and another wellhead installed.
- e. Whenever any seal subject to test pressure is broken, all the tests in OOGO2.III.A.2.i must be followed.

#### **D. SPECIAL REQUIREMENT (S)**

##### **Communitization Agreement**

- The operator will submit a Communitization Agreement to the Santa Fe Office, 301 Dinosaur Trail Santa Fe, New Mexico 87508, at least 90 days before the anticipated date of first production from a well subject to a spacing order issued by the New Mexico Oil Conservation Division. The Communitization Agreement will include the signatures of all working interest owners in all Federal and Indian leases subject to the Communitization Agreement (i.e., operating rights owners and lessees of record), or certification that the operator has obtained the written signatures of all such owners and will make those signatures available to the BLM immediately upon request.
- If the operator does not comply with this condition of approval, the BLM may take enforcement actions that include, but are not limited to, those specified in 43 CFR 3163.1.
- In addition, the well sign shall include the surface and bottom hole lease numbers. When the Communitization Agreement number is known, it shall also be on the sign.

##### **Offline Cementing**

- Contact the BLM prior to the commencement of any offline cementing procedure.

##### **BOP Break Testing Variance**

- BOP break testing is not permitted on this well.

## GENERAL REQUIREMENTS

The BLM is to be notified in advance for a representative to witness:

- a. Spudding well (minimum of 24 hours)
- b. Setting and/or Cementing of all casing strings (minimum of 4 hours)
- c. BOPE tests (minimum of 4 hours)

☒ Eddy County

Call the Carlsbad Field Office, 620 East Greene St., Carlsbad, NM 88220,  
(575) 361-2822

☒ Lea County

Call the Hobbs Field Station, 414 West Taylor, Hobbs NM 88240, (575)  
393-3612

1. Unless the production casing has been run and cemented or the well has been properly plugged, the drilling rig shall not be removed from over the hole without prior approval.
  - a. In the event the operator has proposed to drill multiple wells utilizing a skid/walking rig. Operator shall secure the wellbore on the current well, after installing and testing the wellhead, by installing a blind flange of like pressure rating to the wellhead and a pressure gauge that can be monitored while drilling is performed on the other well(s).
  - b. When the operator proposes to set surface casing with Spudder Rig
    - Notify the BLM when moving in and removing the Spudder Rig.
    - Notify the BLM when moving in the 2<sup>nd</sup> Rig. Rig to be moved in within 90 days of notification that Spudder Rig has left the location.
    - BOP/BOPE test to be conducted per Onshore Oil and Gas Order No. 2 as soon as 2nd Rig is rigged up on well.
2. Floor controls are required for 3M or Greater systems. These controls will be on the rig floor, unobstructed, readily accessible to the driller and will be operational at all times during drilling and/or completion activities. Rig floor is defined as the area immediately around the rotary table; the area immediately above the substructure on which the draw works are located, this does not include the dog house or stairway area.
3. The record of the drilling rate along with the GR/N well log run from TD to surface (horizontal well – vertical portion of hole) shall be submitted to the BLM office as well as all other logs run on the borehole 30 days from completion. If available, a digital copy of the logs is to be submitted in addition to the paper copies. The Rustler top and top and bottom of Salt are to be recorded on the Completion Report.

A. CASING

1. Changes to the approved APD casing program need prior approval if the items substituted are of lesser grade or different casing size or are Non-API. The Operator can exchange the components of the proposal with that of superior strength (i.e. changing from J-55 to N-80, or from 36# to 40#). Changes to the approved cement program need prior approval if the altered cement plan has less volume or strength or if the changes are substantial (i.e. Multistage tool, ECP, etc.). The initial wellhead installed on the well will remain on the well with spools used as needed.
2. Wait on cement (WOC) for Potash Areas: After cementing but before commencing any tests, the casing string shall stand cemented under pressure until both of the following conditions have been met: 1) cement reaches a minimum compressive strength of 500 psi for all cement blends, 2) until cement has been in place at least 24 hours. WOC time will be recorded in the driller's log. The casing integrity test can be done (prior to the cement setting up) immediately after bumping the plug.
3. Wait on cement (WOC) for Water Basin: After cementing but before commencing any tests, the casing string shall stand cemented under pressure until both of the following conditions have been met: 1) cement reaches a minimum compressive strength of 500 psi at the shoe, 2) until cement has been in place at least 8 hours. WOC time will be recorded in the driller's log. See individual casing strings for details regarding lead cement slurry requirements. The casing integrity test can be done (prior to the cement setting up) immediately after bumping the plug.
4. Provide compressive strengths including hours to reach required 500 pounds compressive strength prior to cementing each casing string. Have well specific cement details onsite prior to pumping the cement for each casing string.
5. No pea gravel permitted for remedial or fall back remedial without prior authorization from the BLM engineer.
6. On that portion of any well approved for a 5M BOPE system or greater, a pressure integrity test of each casing shoe shall be performed. Formation at the shoe shall be tested to a minimum of the mud weight equivalent anticipated to control the formation pressure to the next casing depth or at total depth of the well. This test shall be performed before drilling more than 20 feet of new hole.
7. If hardband drill pipe is rotated inside casing, returns will be monitored for metal. If metal is found in samples, drill pipe will be pulled and rubber protectors which have a larger diameter than the tool joints of the drill pipe will be installed prior to continuing drilling operations.
8. Whenever a casing string is cemented in the R-111-P potash area, the NMOCD requirements shall be followed.

B. PRESSURE CONTROL

1. All blowout preventer (BOP) and related equipment (BOPE) shall comply with well control requirements as described in Onshore Oil and Gas Order No. 2 and API RP 53 Sec. 17.
2. If a variance is approved for a flexible hose to be installed from the BOP to the choke manifold, the following requirements apply: The flex line must meet the requirements of API 16C. Check condition of flexible line from BOP to choke manifold, replace if exterior is damaged or if line fails test. Line to be as straight as possible with no hard bends and is to be anchored according to Manufacturer's requirements. The flexible hose can be exchanged with a hose of equal size and equal or greater pressure rating. Anchor requirements, specification sheet and hydrostatic pressure test certification matching the hose in service, to be onsite for review. These documents shall be posted in the company man's trailer and on the rig floor.
3. 5M or higher system requires an HCR valve, remote kill line and annular to match. The remote kill line is to be installed prior to testing the system and tested to stack pressure.
4. If the operator has proposed a multi-bowl wellhead assembly in the APD. The following requirements must be met:
  - a. Wellhead shall be installed by manufacturer's representatives, submit documentation with subsequent sundry.
  - b. If the welding is performed by a third party, the manufacturer's representative shall monitor the temperature to verify that it does not exceed the maximum temperature of the seal.
  - c. Manufacturer representative shall install the test plug for the initial BOP test.
  - d. Whenever any seal subject to test pressure is broken, all the tests in OOGO2.III.A.2.i must be followed.
  - e. If the cement does not circulate and one inch operations would have been possible with a standard wellhead, the well head shall be cut off, cementing operations performed and another wellhead installed.
5. The appropriate BLM office shall be notified a minimum of 4 hours in advance for a representative to witness the tests.
  - a. In a water basin, for all casing strings utilizing slips, these are to be set as soon as the crew and rig are ready and any fallback cement remediation has been done. The casing cut-off and BOP installation can be initiated four hours after installing the slips, which will be approximately six hours after bumping the plug. For those casing strings not using slips, the minimum wait time before cut-off is eight hours after bumping the plug. BOP/BOPE testing can begin after cut-off or once cement reaches 500 psi compressive strength (including



lead when specified), whichever is greater. However, if the float does not hold, cut-off cannot be initiated until cement reaches 500 psi compressive strength (including lead when specified).

- b. In potash areas, for all casing strings utilizing slips, these are to be set as soon as the crew and rig are ready and any fallback cement remediation has been done. For all casing strings, casing cut-off and BOP installation can be initiated at twelve hours after bumping the plug. However, **no tests** shall commence until the cement has had a minimum of 24 hours setup time, except the casing pressure test can be initiated immediately after bumping the plug (only applies to single stage cement jobs).
- c. The tests shall be done by an independent service company utilizing a test plug not a cup or J-packer. The operator also has the option of utilizing an independent tester to test without a plug (i.e. against the casing) pursuant to Onshore Order 2 with the pressure not to exceed 70% of the burst rating for the casing. Any test against the casing must meet the WOC time for water basin (8 hours) or potash (24 hours) or 500 pounds compressive strength, whichever is greater, prior to initiating the test (see casing segment as lead cement may be critical item).
- d. The test shall be run on a 5000 psi chart for a 2-3M BOP/BOP, on a 10000 psi chart for a 5M BOP/BOPE and on a 15000 psi chart for a 10M BOP/BOPE. If a linear chart is used, it shall be a one hour chart. A circular chart shall have a maximum 2 hour clock. If a twelve hour or twenty-four hour chart is used, tester shall make a notation that it is run with a two hour clock.
- e. The results of the test shall be reported to the appropriate BLM office.
- f. All tests are required to be recorded on a calibrated test chart. A copy of the BOP/BOPE test chart and a copy of independent service company test will be submitted to the appropriate BLM office.
- g. The BOP/BOPE test shall include a low pressure test from 250 to 300 psi. The test will be held for a minimum of 10 minutes if test is done with a test plug and 30 minutes without a test plug. This test shall be performed prior to the test at full stack pressure.
- h. BOP/BOPE must be tested by an independent service company within 500 feet of the top of the Wolfcamp formation if the time between the setting of the intermediate casing and reaching this depth exceeds 20 days. This test does not exclude the test prior to drilling out the casing shoe as per Onshore Order No. 2.

C. DRILLING MUD

Mud system monitoring equipment, with derrick floor indicators and visual and audio alarms, shall be operating before drilling into the Wolfcamp formation, and shall be used until production casing is run and cemented.

D. WASTE MATERIAL AND FLUIDS

All waste (i.e. drilling fluids, trash, salts, chemicals, sewage, gray water, etc.) created as a result of drilling operations and completion operations shall be safely contained and disposed of properly at a waste disposal facility. No waste material or fluid shall be disposed of on the well location or surrounding area.

Porto-johns and trash containers will be on-location during fracturing operations or any other crew-intensive operations.

**NMK06252020**



U.S. Department of the Interior  
BUREAU OF LAND MANAGEMENT

# Operator Certification Data Report

09/08/2020

## Operator Certification

*I hereby certify that I, or someone under my direct supervision, have inspected the drill site and access route proposed herein; that I am familiar with the conditions which currently exist; that I have full knowledge of state and Federal laws applicable to this operation; that the statements made in this APD package are, to the best of my knowledge, true and correct; and that the work associated with the operations proposed herein will be performed in conformity with this APD package and the terms and conditions under which it is approved. I also certify that I, or the company I represent, am responsible for the operations conducted under this application. These statements are subject to the provisions of 18 U.S.C. 1001 for the filing of false statements.*

**NAME:**

**Signed on:** 09/17/2019

**Title:**

**Street Address:**

**City:**

**State:**

**Zip:**

**Phone:**

**Email address:**

## Field Representative

**Representative Name:**

**Street Address:** P.O. BOX 50250

**City:** MIDLAND

**State:** TX

**Zip:** 79710

**Phone:** (575)621-2442

**Email address:**



APD ID: 10400047504

Submission Date: 09/17/2019

Highlighted data  
reflects the most  
recent changes

Operator Name: OXY USA INCORPORATED

Well Name: NIMITZ MDP1 12-1 FEDERAL COM

Well Number: 14H

[Show Final Text](#)

Well Type: OIL WELL

Well Work Type: Drill

## Section 1 - General

APD ID: 10400047504

Tie to previous NOS? N

Submission Date: 09/17/2019

BLM Office: CARLSBAD

User:

Title:

Federal/Indian APD: FED

Is the first lease penetrated for production Federal or Indian? FED

Lease number: NMNM082896

Lease Acres: 880

Surface access agreement in place?

Allotted?

Reservation:

Agreement in place? NO

Federal or Indian agreement:

Agreement number:

Agreement name:

Keep application confidential? Y

Permitting Agent? NO

APD Operator: OXY USA INCORPORATED

Operator letter of designation:

## Operator Info

Operator Organization Name: OXY USA INCORPORATED

Operator Address: 5 Greenway Plaza, Suite 110

Zip: 77046

Operator PO Box:

Operator City: Houston

State: TX

Operator Phone: (713)366-5716

Operator Internet Address:

## Section 2 - Well Information

Well in Master Development Plan? EXISTING

Master Development Plan name: Sand Dunes Area

Well in Master SUPO?

Master SUPO name:

Well in Master Drilling Plan?

Master Drilling Plan name:

Well Name: NIMITZ MDP1 12-1 FEDERAL COM

Well Number: 14H

Well API Number:

Field/Pool or Exploratory? Field and Pool

Field Name: COTTON DRAW  
BONE SPRING

Pool Name: COTTON DRAW  
BONE SPRING

Is the proposed well in an area containing other mineral resources? USEABLE WATER,POTASH

Operator Name: OXY USA INCORPORATED

Well Name: NIMITZ MDP1 12-1 FEDERAL COM

Well Number: 14H

Is the proposed well in an area containing other mineral resources? USEABLE WATER,POTASH

Is the proposed well in a Helium production area? N

Use Existing Well Pad? N

New surface disturbance?

Type of Well Pad: MULTIPLE WELL

Multiple Well Pad Name: Nimitz MDP1 12-1 & 13 Federal Com

Number: 25H, 26H, 14H, 25H, 26H

Well Class: HORIZONTAL

Number of Legs: 1

Well Work Type: Drill

Well Type: OIL WELL

Describe Well Type:

Well sub-Type: INFILL

Describe sub-type:

Distance to town: 16 Miles

Distance to nearest well: 35 FT

Distance to lease line: 20 FT

Reservoir well spacing assigned acres Measurement: 320 Acres

Well plat: NimitzMDP1\_12\_1FdCom14H\_c\_102Supplemental\_20190917055705.pdf

NimitzMDP1\_12\_1FdCom14H\_SitePlan\_20190917055705.pdf

Well work start Date: 07/01/2020

Duration: 45 DAYS

### Section 3 - Well Location Table

Survey Type: RECTANGULAR

Describe Survey Type:

Datum: NAD83

Vertical Datum: NAVD88

Survey number:

Reference Datum: GROUND LEVEL

Wellbore	NS-Foot	NS Indicator	EW-Foot	EW Indicator	Twsp	Range	Section	Aliquot/Lot/Tract	Latitude	Longitude	County	State	Meridian	Lease Type	Lease Number	Elevation	MD	TVD	Will this well produce from this lease?
SHL Leg #1	830	FSL	795	FEL	24S	30E	12	Aliquot SESE	32.2274257	-103.8282351	EDD Y	NEW MEXI CO	NEW MEXI CO	F	NMNM 082896	3522	0	0	N
KOP Leg #1	50	FSL	940	FEL	24S	30E	12	Aliquot SESE	32.2252818	-103.8287057	EDD Y	NEW MEXI CO	NEW MEXI CO	F	NMNM 082896	-5431	9177	8953	N



**Operator Name:** OXY USA INCORPORATED

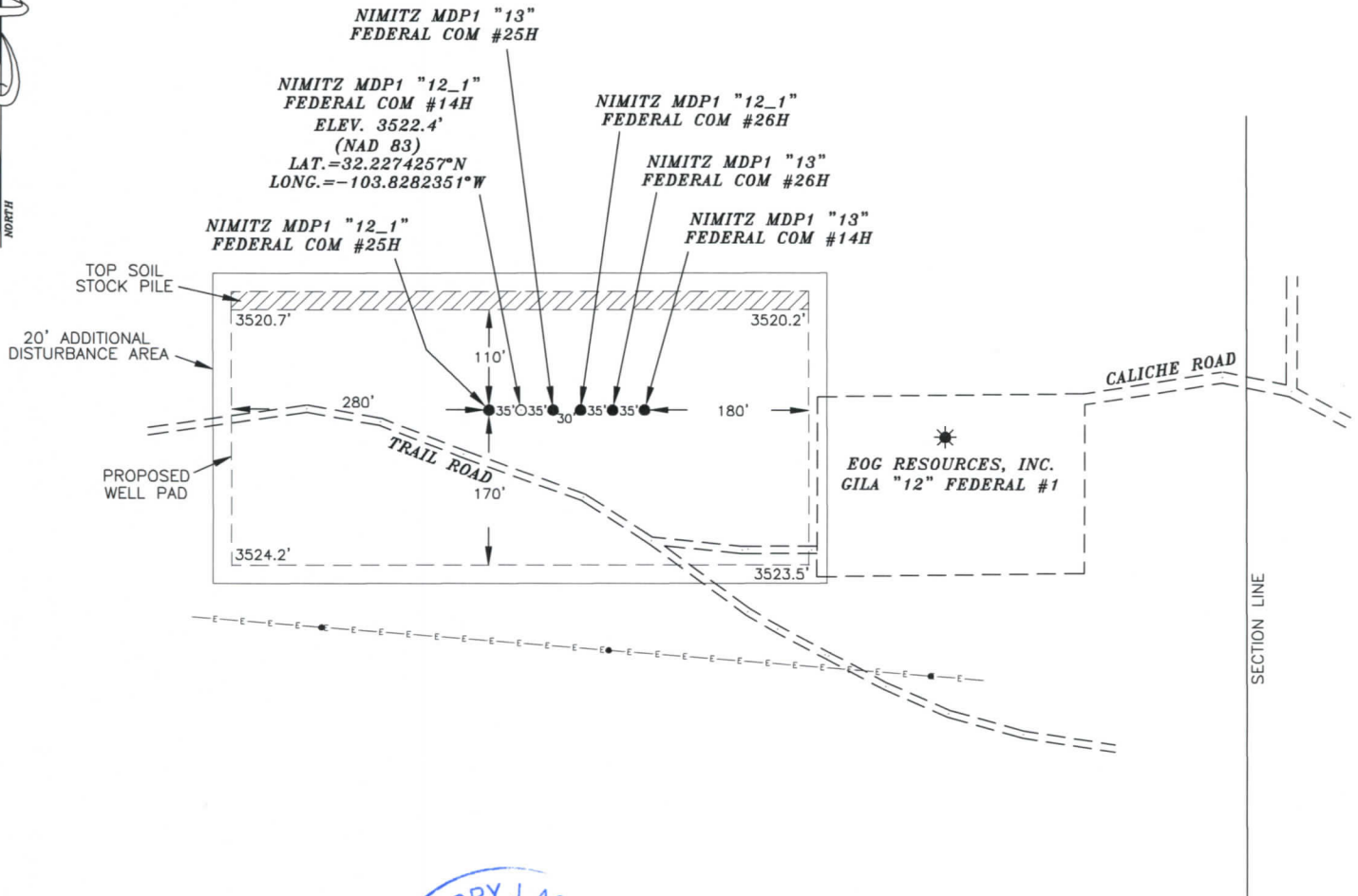
**Well Name:** NIMITZ MDP1 12-1 FEDERAL COM

**Well Number:** 14H

Wellbore	NS-Foot	NS Indicator	EW-Foot	EW Indicator	Twsp	Range	Section	Aliquot/Lot/Tract	Latitude	Longitude	County	State	Meridian	Lease Type	Lease Number	Elevation	MD	TVD	Will this well produce from this lease?
PPP Leg #1-1	100	FSL	940	FEL	24S	30E	12	Aliquot SESE	32.2254193	- 103.8287056	EDD Y	NEW MEXICO	NEW MEXICO	F	NMNM 120897	- 5826	9896	9348	Y
PPP Leg #1-2	1319	FSL	940	FEL	24S	30E	12	Aliquot NESE	32.228773	- 103.828703	EDD Y	NEW MEXICO	NEW MEXICO	F	FEE	- 5830	11100	9352	Y
PPP Leg #1-3	2640	FSL	940	FEL	24S	30E	12	Aliquot SENE	32.232404	- 103.828701	EDD Y	NEW MEXICO	NEW MEXICO	F	NMNM 082896	- 5834	12500	9356	Y
PPP Leg #1-4	3	FSL	940	FEL	24S	30E	1	Aliquot SESE	32.239663	- 103.828695	EDD Y	NEW MEXICO	NEW MEXICO	F	NMNM 097133	- 5841	15100	9363	Y
EXIT Leg #1	100	FNL	940	FEL	24S	30E	1	Aliquot NWN W	32.2539139	- 103.8286823	EDD Y	NEW MEXICO	NEW MEXICO	F	NMNM 097133	- 5856	20303	9378	Y
BHL Leg #1	20	FNL	940	FEL	24S	30E	1	Aliquot NWN W	32.2541338	- 103.8286821	EDD Y	NEW MEXICO	NEW MEXICO	F	NMNM 097133	- 5856	20343	9378	N

XY USA INC.  
NIMITZ MDP1 "12\_1" FEDERAL COM #14H  
SITE PLAN

FAA PERMIT: NO



**SURVEYORS CERTIFICATE**

I, TERRY J. ASEL, NEW MEXICO PROFESSIONAL SURVEYOR NO. 15079, DO HEREBY CERTIFY THAT I CONDUCTED AND AM RESPONSIBLE FOR THIS SURVEY, THAT THIS SURVEY IS TRUE AND CORRECT TO THE BEST OF MY KNOWLEDGE AND BELIEF, AND MEETS THE "MINIMUM STANDARDS FOR SURVEYING IN NEW MEXICO" AS ADOPTED BY THE NEW MEXICO STATE BOARD OF REGISTRATION FOR PROFESSIONAL ENGINEERS AND SURVEYORS.

*Terry J. Asel* 5/20/2019  
Terry J. Asel N.M. R.P.L.S. No. 15079

Asel Surveying

P.O. BOX 393 - 310 W. TAYLOR  
HOBBS, NEW MEXICO - 575-393-9146



**LEGEND**

- DENOTES PROPOSED WELL PAD
- DENOTES PROPOSED ROAD
- DENOTES STOCK PILE AREA
- ★ DENOTES EXISTING WELL



XY USA INC.

NIMITZ MDP1 "12\_1" FEDERAL COM #14H  
LOCATED AT 830' FSL & 795' FEL IN  
SECTION 12, TOWNSHIP 24 SOUTH, RANGE 30  
EAST, N.M.P.M., EDDY COUNTY, NEW MEXICO

Survey Date: 02/01/19	Sheet 1 of 1 Sheets
W.O. Number: 190201WL-a	Drawn By: KA Rev:
Date: 05/17/19	190201WL-a Scale: 1"=200'

**APD ID:** 10400047504

**Submission Date:** 09/17/2019

Highlighted data  
reflects the most  
recent changes

**Operator Name:** OXY USA INCORPORATED

**Well Name:** NIMITZ MDP1 12-1 FEDERAL COM

**Well Number:** 14H

[Show Final Text](#)

**Well Type:** OIL WELL

**Well Work Type:** Drill

## Section 1 - Geologic Formations

Formation ID	Formation Name	Elevation	True Vertical Depth	Measured Depth	Lithologies	Mineral Resources	Producing Formation
539069	RUSTLER	3522	588	588	ANHYDRITE, DOLOMITE, SHALE	USEABLE WATER	N
539070	SALADO	2609	913	913	ANHYDRITE, DOLOMITE, HALITE, SHALE	OTHER : SALT	N
539067	CASTILE	728	2794	2794	ANHYDRITE	OTHER : salt	N
539071	LAMAR	-734	4256	4256	LIMESTONE, SANDSTONE, SILTSTONE	NATURAL GAS, OIL, OTHER : BRINE	N
539072	BELL CANYON	-766	4288	4300	SANDSTONE, SILTSTONE	NATURAL GAS, OIL, OTHER, USEABLE WATER : BRINE	N
539073	CHERRY CANYON	-1631	5153	5200	SANDSTONE, SILTSTONE	NATURAL GAS, OIL, OTHER : BRINE	N
539074	BRUSHY CANYON	-2859	6381	6450	LIMESTONE, SANDSTONE, SILTSTONE	NATURAL GAS, OIL, OTHER : BRINE	N
539068	BONE SPRING	-4592	8114	8200	LIMESTONE, SANDSTONE, SILTSTONE	NATURAL GAS, OIL	N
539078	BONE SPRING 1ST	-5561	9083	9300	LIMESTONE, SANDSTONE, SILTSTONE	NATURAL GAS, OIL	Y

## Section 2 - Blowout Prevention

**Pressure Rating (PSI):** 5M

**Rating Depth:** 9378

**Equipment:** 13-5/8" 5M Annular, Blind Ram, Double Ram

**Requesting Variance?** YES

**Variance request:** Request for the use of a flexible choke line from the BOP to Choke Manifold.

**Testing Procedure:** Oxy will utilize a 5M annular with a 10M BOPE stack. The BOP/BOPE will be tested by an independent service company to 250 psi low and the high pressure indicated above per Onshore Order 2 requirements. The System may be upgraded to a higher pressure but still tested to the working pressure listed in the table above. If the system is upgraded all the components installed will be functional and tested. BOP/BOPE will be tested by an independent service company to 250 psi low and the high pressure indicated above per Onshore Order 2 requirements. The System may be upgraded to a higher pressure but still tested to the working pressure listed in the table above. If the system is upgraded all the components installed will be functional and tested. Pipe rams will be operationally checked each 24 hour period. Blind rams will be operationally checked on each trip out of the hole. These checks will be noted on the daily tour sheets. Other accessories to the BOP equipment will include a Kelly cock and floor safety valve (inside BOP) and choke lines and choke manifold. A multibowl wellhead or a unionized multibowl wellhead system will be employed. The wellhead and connection to the BOPE will meet all API 6A requirements. The BOP will be tested per Onshore Order #2 after installation on the surface casing which

**Operator Name:** OXY USA INCORPORATED

**Well Name:** NIMITZ MDP1 12-1 FEDERAL COM

**Well Number:** 14H

will cover testing requirements for a maximum of 30 days. If any seal subject to test pressure is broken the system will be tested. We will test the flange connection of the wellhead with a test port that is directly in the flange. BOP Break Testing Request - As per the agreement reached in the OXY/BLM meeting on Feb 22, 2018, OXY requests permission to allow BOP Break Testing under the following conditions: 1. After a full BOP test is conducted on the first well on the pad. 2. When skidding to drill an intermediate section that casing point is either shallower than the third Bone Spring or 10,000' TVD. 3. Full BOP test will be required prior to drilling any production section.

**Choke Diagram Attachment:**

NimitzMDP1\_12\_1FdCom14H\_ChokeManifold\_20190917061115.pdf

**BOP Diagram Attachment:**

NimitzMDP1\_12\_1FdCom14H\_BOP5M\_20190917061126.pdf

NimitzMDP1\_12\_1FdCom14H\_FlexHoseCert\_20190917061126.pdf

### Section 3 - Casing

Casing ID	String Type	Hole Size	Csg Size	Condition	Standard	Tapered String	Top Set MD	Bottom Set MD	Top Set TVD	Bottom Set TVD	Top Set MSL	Bottom Set MSL	Calculated casing length MD	Grade	Weight	Joint Type	Collapse SF	Burst SF	Joint SF Type	Joint SF	Body SF Type	Body SF
1	SURFACE	17.5	13.375	NEW	API	N	0	638	0	638	3522	2884	638	J-55	54.5	BUTT	1.125	1.2	BUOY	1.4	BUOY	1.4
2	INTERMEDIATE	12.25	9.625	NEW	API	N	0	4306	0	4306		-784	4306	L-80	40	BUTT	1.125	1.2	BUOY	1.4	BUOY	1.4
3	PRODUCTION	8.5	5.5	NEW	API	N	0	20343	0	9378		-5856	20343	P-110	20	OTHER - DQX/SFTORQ/DQWTORQ	1.125	1.2	BUOY	1.4	BUOY	1.4

**Casing Attachments**

**Operator Name:** OXY USA INCORPORATED

**Well Name:** NIMITZ MDP1 12-1 FEDERAL COM

**Well Number:** 14H

#### Casing Attachments

---

**Casing ID:** 1      **String Type:** SURFACE

**Inspection Document:**

**Spec Document:**

**Tapered String Spec:**

NimitzMDP113FdCom11H\_5.500in\_x\_20\_20190905083729.00

NimitzMDP113FdCom11H\_5.500in\_x\_20\_20190905083733.00

NimitzMDP113FdCom11H\_5.500in\_x\_20\_20190905083737.00

**Casing Design Assumptions and Worksheet(s):**

---

**Casing ID:** 2      **String Type:** INTERMEDIATE

**Inspection Document:**

**Spec Document:**

**Tapered String Spec:**

**Casing Design Assumptions and Worksheet(s):**

---

**Casing ID:** 3      **String Type:** PRODUCTION

**Inspection Document:**

**Spec Document:**

**Tapered String Spec:**

**Casing Design Assumptions and Worksheet(s):**

---

#### Section 4 - Cement



**Operator Name:** OXY USA INCORPORATED

**Well Name:** NIMITZ MDP1 12-1 FEDERAL COM

**Well Number:** 14H

String Type	Lead/Tail	Stage Tool Depth	Top MD	Bottom MD	Quantity(sx)	Yield	Density	Cu Ft	Excess%	Cement type	Additives
SURFACE	Lead		0	638	678	1.33	14.8	902	100	Cl C	Accelerator

INTERMEDIATE	Lead		0	3806	995	1.73	12.9	1721	50	Pozzolan C	Retarder
INTERMEDIATE	Tail		3806	4306	155	1.33	14.8	206	20	Cl C	Accelerator
PRODUCTION	Lead		6617	2034 3	2399	1.38	13.2	3311	5	CL H	Retarder, Dispersant, Salt
PRODUCTION	Tail		0	6631	956	1.87	12.9	1788	25	Cl H	Accelerator

### Section 5 - Circulating Medium

**Mud System Type:** Closed

**Will an air or gas system be Used?** NO

**Description of the equipment for the circulating system in accordance with Onshore Order #2:**

**Diagram of the equipment for the circulating system in accordance with Onshore Order #2:**

**Describe what will be on location to control well or mitigate other conditions:** Sufficient mud materials to maintain mud properties and meet minimum lost circulation and weight increase requirements. The following is a general list of products: Barite, Bentonite, Gypsum, Lime, Soda Ash, Caustic Soda, Nut Plug, Cedar Fiber, Cotton Seed Hulls, Drilling Paper, Salt Water Clay, CaCl<sub>2</sub>.

**Describe the mud monitoring system utilized:** PVT/MD Totco/Visual Monitoring

### Circulating Medium Table

Top Depth	Bottom Depth	Mud Type	Min Weight (lbs/gal)	Max Weight (lbs/gal)	Density (lbs/cu ft)	Gel Strength (lbs/100 sqft)	PH	Viscosity (CP)	Salinity (ppm)	Filtration (cc)	Additional Characteristics
4306	2034 3	OTHER : Water-Based and/or Oil-Based Mud	8	9.6							
0	638	WATER-BASED MUD	8.6	8.8							

**Operator Name:** OXY USA INCORPORATED

**Well Name:** NIMITZ MDP1 12-1 FEDERAL COM

**Well Number:** 14H

Top Depth	Bottom Depth	Mud Type	Min Weight (lbs/gal)	Max Weight (lbs/gal)	Density (lbs/cu ft)	Gel Strength (lbs/100 sqft)	PH	Viscosity (CP)	Salinity (ppm)	Filtration (cc)	Additional Characteristics
638	4306	OTHER : Saturated Brine Based Mud	9.8	10							

## Section 6 - Test, Logging, Coring

**List of production tests including testing procedures, equipment and safety measures:**

GR from TD to surface (horizontal well – vertical portion of hole). Mud Log from intermediate shoe to TD.

**List of open and cased hole logs run in the well:**

GAMMA RAY LOG,MUD LOG/GEOLOGIC LITHOLOGY LOG,MUD LOG/GEOLOGICAL LITHOLOGY LOG,

**Coring operation description for the well:**

No coring is planned at this time.

## Section 7 - Pressure

**Anticipated Bottom Hole Pressure:** 4682

**Anticipated Surface Pressure:** 2618

**Anticipated Bottom Hole Temperature(F):** 156

**Anticipated abnormal pressures, temperatures, or potential geologic hazards?** NO

**Describe:**

**Contingency Plans geohazards description:**

**Contingency Plans geohazards attachment:**

**Hydrogen Sulfide drilling operations plan required?** YES

**Hydrogen sulfide drilling operations plan:**

NimitzMDP1\_12\_1FdCom14H\_H2S2\_20190917064206.pdf

NimitzMDP1\_12\_1FdCom14H\_EmergencyContacts\_20190917064206.pdf

NimitzMDP1\_12\_1FdCom14H\_H2S1\_20190917064206.pdf

**Operator Name:** OXY USA INCORPORATED

**Well Name:** NIMITZ MDP1 12-1 FEDERAL COM

**Well Number:** 14H

## Section 8 - Other Information

### Proposed horizontal/directional/multi-lateral plan submission:

NimitzMDP1\_12\_1FdCom14H\_DirectPlan\_20190917064219.pdf

NimitzMDP1\_12\_1FdCom14H\_DirectPlot\_20190917064219.pdf

### Other proposed operations facets description:

OXY requests the option to set casing shallower yet still below the salts if losses or hole conditions require this. Cement volumes may be adjusted if casing is set shallower and a DV tool will be run in case a contingency second stage is required for cement to reach surface. If cement circulated to surface during first stage we will drop a cancelation cone and not pump the second stage.

OXY requests the option to run production casing with DQX, SF TORQ and/or DQW TORQ connections to accommodate hole conditions or drilling operations.

OXY requests to pump a two stage cement job on the intermediate II casing string with the first stage being pumped conventionally with the calculated TOC @ the Bone Spring and the second stage performed as a bradenhead squeeze with planned cement from the Bone Spring to surface.

Annular Clearance Variance Request - As per the agreement reached in the OXY/BLM meeting on Feb 22, 2018, Oxy requests permission to allow deviation from the 0.422 annular clearance requirement from Onshore Order #2 under the following conditions:

1. Annular clearance to meet or exceed 0.422 between intermediate casing ID and production casing coupling only on the first 500 overlap between both casings.
2. Annular clearance less than 0.422 is acceptable for the curve and lateral portions of the production open hole section.

Well will be drilled with a walking/skidding operation. Plan to drill the multiple well pad in batch by section: all surface sections, intermediate sections and production sections. The wellhead will be secured with a night cap whenever the rig is not over the well.

OXY requests the option to contract a Surface Rig to drill, set surface casing, and cement for this well. If the timing between rigs is such that OXY would not be able to preset surface, the Primary Rig will MIRU and drill the well in its entirety per the APD. Please see the attached document for information on the spudder rig.

OXY respectfully requests a variance to cement the 9-5/8 and/or 7-5/8 intermediate casing strings offline. The summarized operational sequence will be as follows:

1. Run casing as per normal operations. While running casing, conduct negative pressure test and confirm integrity of the float equipment (float collar and shoe).
2. Land casing.
3. Fill pipe with kill weight fluid, and confirm well is static.
  - a. If well is not static notify BLM and kill well.
  - b. Once well is static notify BLM with intent to proceed with nipple down and offline cementing.
4. Set and pressure test annular packoff.
5. After confirmation of both annular barriers and internal barriers, nipple down BOP and install cap flange. If any barrier fails to test, the BOP stack will not be nipped down until after the cement job is completed.
6. Skid rig to next well on pad.
7. Confirm well is static before removing cap flange.
8. If well is not static notify BLM and kill well prior to cementing or nipping up for further remediation.
9. Install offline cement tool.
10. Rig up cement equipment.
  - a. Notify BLM prior to cement job.
11. Perform cement job.
12. Confirm well is static and floats are holding after cement job.

**Operator Name:** OXY USA INCORPORATED

**Well Name:** NIMITZ MDP1 12-1 FEDERAL COM

**Well Number:** 14H

13. Remove cement equipment, offline cement tools and install night cap with pressure gauge for monitoring.

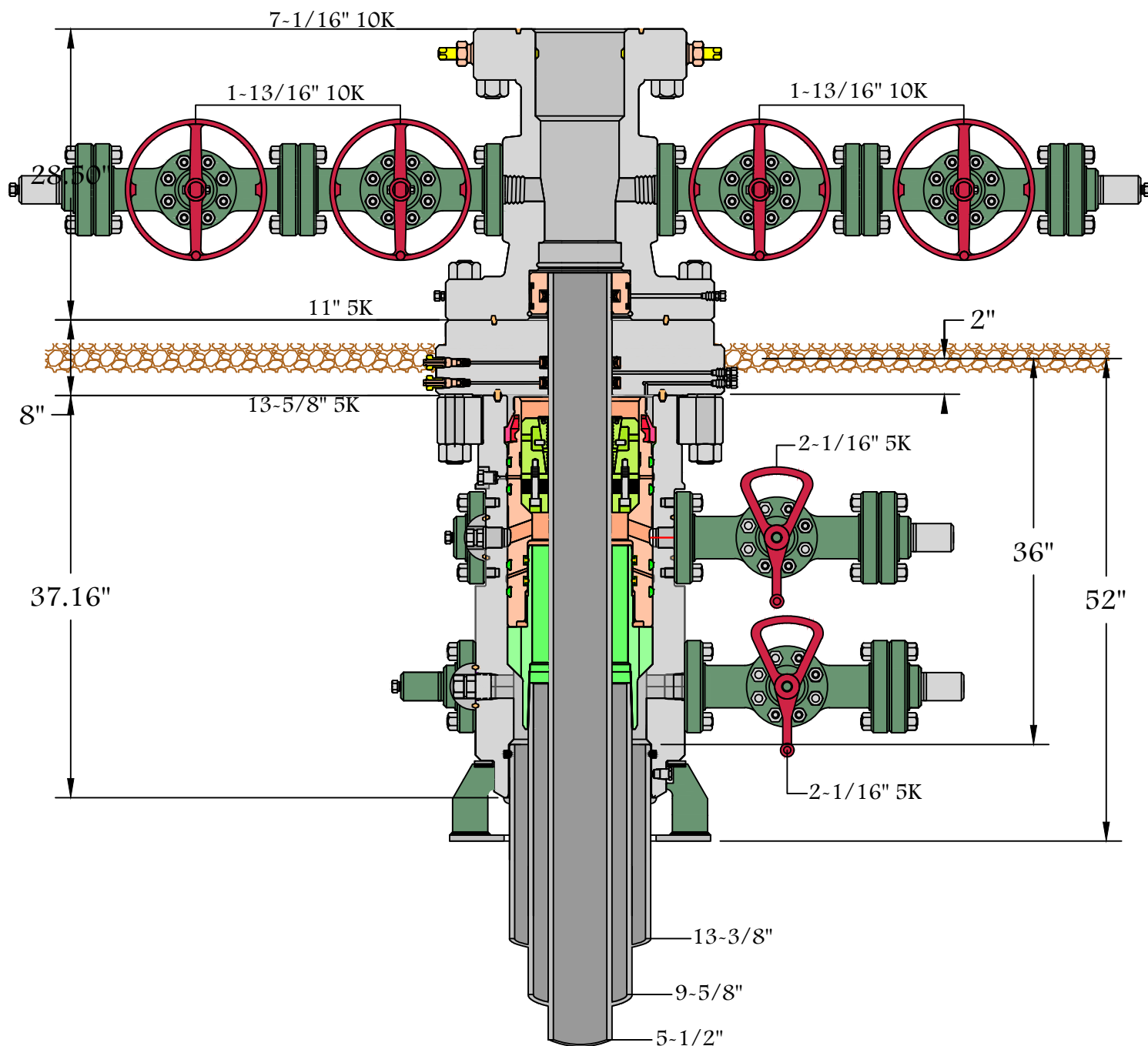
**Other proposed operations facets attachment:**

NimitzMDP1\_12\_1FdCom14H\_DrillPlan\_20190917064340.pdf

NimitzMDP1\_12\_1FdCom14H\_SpudRigData\_20190917064340.pdf

NimitzMDP1\_12\_1FdCom14H\_GasCapPlan\_20190917064341.pdf

**Other Variance attachment:**



13-5/8" 5K MN-DS



Name: Brandon	Date: 5-10-17	Working Pressure:	# 1505172
---------------	---------------	-------------------	-----------



# **OXY**

**PRD NM DIRECTIONAL PLANS (NAD 1983)**

**Nimitz MDP1 12\_1**

**Nimitz MDP1 12\_1 Federal Com 14H**

**Wellbore #1**

**Plan: Permitting Plan**

## **Standard Planning Report**

**09 July, 2019**

# Oxy

## Planning Report

<b>Database:</b>	HOPSPP	<b>Local Co-ordinate Reference:</b>	Well Nimitz MDP1 12_1 Federal Com 14H
<b>Company:</b>	ENGINEERING DESIGNS	<b>TVD Reference:</b>	RKB=26.5' @ 3548.90ft
<b>Project:</b>	PRD NM DIRECTIONAL PLANS (NAD 1983)	<b>MD Reference:</b>	RKB=26.5' @ 3548.90ft
<b>Site:</b>	Nimitz MDP1 12_1	<b>North Reference:</b>	Grid
<b>Well:</b>	Nimitz MDP1 12_1 Federal Com 14H	<b>Survey Calculation Method:</b>	Minimum Curvature
<b>Wellbore:</b>	Wellbore #1		
<b>Design:</b>	Permitting Plan		

<b>Project</b>	PRD NM DIRECTIONAL PLANS (NAD 1983)		
<b>Map System:</b>	US State Plane 1983	<b>System Datum:</b>	Mean Sea Level
<b>Geo Datum:</b>	North American Datum 1983		
<b>Map Zone:</b>	New Mexico Eastern Zone		Using geodetic scale factor

Site		Nimitz MDP1 12_1				
Site Position:		Northing:	446,271.81 usft	Latitude:	32° 13' 33.331024 N	
From:	Map	Easting:	693,055.21 usft	Longitude:	103° 50' 33.713673 W	
Position Uncertainty:		2.00 ft	Slot Radius:	13.200 in	Grid Convergence:	0.26 °

Well	Nimitz MDP1 12_1 Federal Com 14H					
Well Position	+N/-S	566.59 ft	Northing:	446,838.36 usft	Latitude:	32° 13' 38.732455 N
	+E/-W	4,470.19 ft	Easting:	697,525.10 usft	Longitude:	103° 49' 41.646249 W
Position Uncertainty		2.00 ft	Wellhead Elevation:	0.00 ft	Ground Level:	3,522.40 ft

<b>Wellbore</b>	Wellbore #1				
<b>Magnetics</b>	<b>Model Name</b>	<b>Sample Date</b>	<b>Declination (°)</b>	<b>Dip Angle (°)</b>	<b>Field Strength (nT)</b>
	HDGM	7/9/2019	6.80	59.92	47,902

<b>Design</b>	Permitting Plan			
<b>Audit Notes:</b>				
<b>Version:</b>	<b>Phase:</b>	PROTOTYPE	<b>Tie On Depth:</b>	0.00
<b>Vertical Section:</b>	<b>Depth From (TVD) (ft)</b>	<b>+N/-S (ft)</b>	<b>+E/-W (ft)</b>	<b>Direction (°)</b>
	0.00	0.00	0.00	358.92

<b>Plan Sections</b>										
Measured Depth (ft)	Inclination (°)	Azimuth (°)	Vertical Depth (ft)	+N/-S (ft)	+E/-W (ft)	Dogleg Rate (°/100ft)	Build Rate (°/100ft)	Turn Rate (°/100ft)	TFO (°)	Target
0.00	0.00	0.00	0.00	0.00	0.00	0.00	0.00	0.00	0.00	
2,792.00	0.00	0.00	2,792.00	0.00	0.00	0.00	0.00	0.00	0.00	
3,692.19	18.00	185.08	3,677.45	-139.72	-12.42	2.00	2.00	0.00	185.08	
7,379.68	18.00	185.08	7,184.38	-1,274.97	-113.32	0.00	0.00	0.00	0.00	
9,177.87	18.00	359.77	8,953.00	-1,273.90	-139.91	2.00	0.00	9.71	177.21	
9,896.22	89.84	359.77	9,348.90	-730.64	-142.09	10.00	10.00	0.00	0.00	FTP (Nimitz MDP1
20,343.06	89.84	359.77	9,378.90	9,716.07	-183.91	0.00	0.00	0.00	0.00	PBHL (Nimitz MDP1

# Oxy Planning Report

<b>Database:</b>	HOPSP	<b>Local Co-ordinate Reference:</b>	Well Nimitz MDP1 12_1 Federal Com 14H
<b>Company:</b>	ENGINEERING DESIGNS	<b>TVD Reference:</b>	RKB=26.5' @ 3548.90ft
<b>Project:</b>	PRD NM DIRECTIONAL PLANS (NAD 1983)	<b>MD Reference:</b>	RKB=26.5' @ 3548.90ft
<b>Site:</b>	Nimitz MDP1 12_1	<b>North Reference:</b>	Grid
<b>Well:</b>	Nimitz MDP1 12_1 Federal Com 14H	<b>Survey Calculation Method:</b>	Minimum Curvature
<b>Wellbore:</b>	Wellbore #1		
<b>Design:</b>	Permitting Plan		

Planned Survey									
Measured Depth (ft)	Inclination (°)	Azimuth (°)	Vertical Depth (ft)	+N/-S (ft)	+E/-W (ft)	Vertical Section (ft)	Dogleg Rate (°/100ft)	Build Rate (°/100ft)	Turn Rate (°/100ft)
0.00	0.00	0.00	0.00	0.00	0.00	0.00	0.00	0.00	0.00
100.00	0.00	0.00	100.00	0.00	0.00	0.00	0.00	0.00	0.00
200.00	0.00	0.00	200.00	0.00	0.00	0.00	0.00	0.00	0.00
300.00	0.00	0.00	300.00	0.00	0.00	0.00	0.00	0.00	0.00
400.00	0.00	0.00	400.00	0.00	0.00	0.00	0.00	0.00	0.00
500.00	0.00	0.00	500.00	0.00	0.00	0.00	0.00	0.00	0.00
600.00	0.00	0.00	600.00	0.00	0.00	0.00	0.00	0.00	0.00
700.00	0.00	0.00	700.00	0.00	0.00	0.00	0.00	0.00	0.00
800.00	0.00	0.00	800.00	0.00	0.00	0.00	0.00	0.00	0.00
900.00	0.00	0.00	900.00	0.00	0.00	0.00	0.00	0.00	0.00
1,000.00	0.00	0.00	1,000.00	0.00	0.00	0.00	0.00	0.00	0.00
1,100.00	0.00	0.00	1,100.00	0.00	0.00	0.00	0.00	0.00	0.00
1,200.00	0.00	0.00	1,200.00	0.00	0.00	0.00	0.00	0.00	0.00
1,300.00	0.00	0.00	1,300.00	0.00	0.00	0.00	0.00	0.00	0.00
1,400.00	0.00	0.00	1,400.00	0.00	0.00	0.00	0.00	0.00	0.00
1,500.00	0.00	0.00	1,500.00	0.00	0.00	0.00	0.00	0.00	0.00
1,600.00	0.00	0.00	1,600.00	0.00	0.00	0.00	0.00	0.00	0.00
1,700.00	0.00	0.00	1,700.00	0.00	0.00	0.00	0.00	0.00	0.00
1,800.00	0.00	0.00	1,800.00	0.00	0.00	0.00	0.00	0.00	0.00
1,900.00	0.00	0.00	1,900.00	0.00	0.00	0.00	0.00	0.00	0.00
2,000.00	0.00	0.00	2,000.00	0.00	0.00	0.00	0.00	0.00	0.00
2,100.00	0.00	0.00	2,100.00	0.00	0.00	0.00	0.00	0.00	0.00
2,200.00	0.00	0.00	2,200.00	0.00	0.00	0.00	0.00	0.00	0.00
2,300.00	0.00	0.00	2,300.00	0.00	0.00	0.00	0.00	0.00	0.00
2,400.00	0.00	0.00	2,400.00	0.00	0.00	0.00	0.00	0.00	0.00
2,500.00	0.00	0.00	2,500.00	0.00	0.00	0.00	0.00	0.00	0.00
2,600.00	0.00	0.00	2,600.00	0.00	0.00	0.00	0.00	0.00	0.00
2,700.00	0.00	0.00	2,700.00	0.00	0.00	0.00	0.00	0.00	0.00
2,792.00	0.00	0.00	2,792.00	0.00	0.00	0.00	0.00	0.00	0.00
2,800.00	0.16	185.08	2,800.00	-0.01	0.00	-0.01	2.00	2.00	0.00
2,900.00	2.16	185.08	2,899.97	-2.03	-0.18	-2.02	2.00	2.00	0.00
3,000.00	4.16	185.08	2,999.82	-7.52	-0.67	-7.50	2.00	2.00	0.00
3,100.00	6.16	185.08	3,099.41	-16.48	-1.46	-16.45	2.00	2.00	0.00
3,200.00	8.16	185.08	3,198.62	-28.89	-2.57	-28.84	2.00	2.00	0.00
3,300.00	10.16	185.08	3,297.34	-44.75	-3.98	-44.66	2.00	2.00	0.00
3,400.00	12.16	185.08	3,395.45	-64.02	-5.69	-63.91	2.00	2.00	0.00
3,500.00	14.16	185.08	3,492.81	-86.70	-7.71	-86.54	2.00	2.00	0.00
3,600.00	16.16	185.08	3,589.33	-112.75	-10.02	-112.54	2.00	2.00	0.00
3,692.19	18.00	185.08	3,677.45	-139.72	-12.42	-139.46	2.00	2.00	0.00
3,700.00	18.00	185.08	3,684.88	-142.13	-12.63	-141.86	0.00	0.00	0.00
3,800.00	18.00	185.08	3,779.98	-172.91	-15.37	-172.59	0.00	0.00	0.00
3,900.00	18.00	185.08	3,875.08	-203.70	-18.10	-203.32	0.00	0.00	0.00
4,000.00	18.00	185.08	3,970.19	-234.48	-20.84	-234.05	0.00	0.00	0.00
4,100.00	18.00	185.08	4,065.29	-265.27	-23.58	-264.78	0.00	0.00	0.00
4,200.00	18.00	185.08	4,160.39	-296.06	-26.31	-295.51	0.00	0.00	0.00
4,300.00	18.00	185.08	4,255.50	-326.84	-29.05	-326.24	0.00	0.00	0.00
4,400.00	18.00	185.08	4,350.60	-357.63	-31.79	-356.97	0.00	0.00	0.00
4,500.00	18.00	185.08	4,445.71	-388.42	-34.52	-387.69	0.00	0.00	0.00
4,600.00	18.00	185.08	4,540.81	-419.20	-37.26	-418.42	0.00	0.00	0.00
4,700.00	18.00	185.08	4,635.91	-449.99	-40.00	-449.15	0.00	0.00	0.00
4,800.00	18.00	185.08	4,731.02	-480.78	-42.73	-479.88	0.00	0.00	0.00
4,900.00	18.00	185.08	4,826.12	-511.56	-45.47	-510.61	0.00	0.00	0.00
5,000.00	18.00	185.08	4,921.22	-542.35	-48.20	-541.34	0.00	0.00	0.00
5,100.00	18.00	185.08	5,016.33	-573.14	-50.94	-572.07	0.00	0.00	0.00

# Oxy

## Planning Report

<b>Database:</b>	HOPSPP	<b>Local Co-ordinate Reference:</b>	Well Nimitz MDP1 12_1 Federal Com 14H
<b>Company:</b>	ENGINEERING DESIGNS	<b>TVD Reference:</b>	RKB=26.5' @ 3548.90ft
<b>Project:</b>	PRD NM DIRECTIONAL PLANS (NAD 1983)	<b>MD Reference:</b>	RKB=26.5' @ 3548.90ft
<b>Site:</b>	Nimitz MDP1 12_1	<b>North Reference:</b>	Grid
<b>Well:</b>	Nimitz MDP1 12_1 Federal Com 14H	<b>Survey Calculation Method:</b>	Minimum Curvature
<b>Wellbore:</b>	Wellbore #1		
<b>Design:</b>	Permitting Plan		

Planned Survey									
Measured Depth (ft)	Inclination (°)	Azimuth (°)	Vertical Depth (ft)	+N/-S (ft)	+E/-W (ft)	Vertical Section (ft)	Dogleg Rate (°/100ft)	Build Rate (°/100ft)	Turn Rate (°/100ft)
5,200.00	18.00	185.08	5,111.43	-603.92	-53.68	-602.80	0.00	0.00	0.00
5,300.00	18.00	185.08	5,206.53	-634.71	-56.41	-633.53	0.00	0.00	0.00
5,400.00	18.00	185.08	5,301.64	-665.50	-59.15	-664.26	0.00	0.00	0.00
5,500.00	18.00	185.08	5,396.74	-696.28	-61.89	-694.99	0.00	0.00	0.00
5,600.00	18.00	185.08	5,491.85	-727.07	-64.62	-725.72	0.00	0.00	0.00
5,700.00	18.00	185.08	5,586.95	-757.86	-67.36	-756.45	0.00	0.00	0.00
5,800.00	18.00	185.08	5,682.05	-788.64	-70.10	-787.18	0.00	0.00	0.00
5,900.00	18.00	185.08	5,777.16	-819.43	-72.83	-817.90	0.00	0.00	0.00
6,000.00	18.00	185.08	5,872.26	-850.22	-75.57	-848.63	0.00	0.00	0.00
6,100.00	18.00	185.08	5,967.36	-881.00	-78.30	-879.36	0.00	0.00	0.00
6,200.00	18.00	185.08	6,062.47	-911.79	-81.04	-910.09	0.00	0.00	0.00
6,300.00	18.00	185.08	6,157.57	-942.58	-83.78	-940.82	0.00	0.00	0.00
6,400.00	18.00	185.08	6,252.67	-973.36	-86.51	-971.55	0.00	0.00	0.00
6,500.00	18.00	185.08	6,347.78	-1,004.15	-89.25	-1,002.28	0.00	0.00	0.00
6,600.00	18.00	185.08	6,442.88	-1,034.94	-91.99	-1,033.01	0.00	0.00	0.00
6,700.00	18.00	185.08	6,537.99	-1,065.72	-94.72	-1,063.74	0.00	0.00	0.00
6,800.00	18.00	185.08	6,633.09	-1,096.51	-97.46	-1,094.47	0.00	0.00	0.00
6,900.00	18.00	185.08	6,728.19	-1,127.30	-100.20	-1,125.20	0.00	0.00	0.00
7,000.00	18.00	185.08	6,823.30	-1,158.08	-102.93	-1,155.93	0.00	0.00	0.00
7,100.00	18.00	185.08	6,918.40	-1,188.87	-105.67	-1,186.66	0.00	0.00	0.00
7,200.00	18.00	185.08	7,013.50	-1,219.65	-108.40	-1,217.38	0.00	0.00	0.00
7,300.00	18.00	185.08	7,108.61	-1,250.44	-111.14	-1,248.11	0.00	0.00	0.00
7,379.68	18.00	185.08	7,184.38	-1,274.97	-113.32	-1,272.60	0.00	0.00	0.00
7,400.00	17.60	185.14	7,203.73	-1,281.16	-113.87	-1,278.77	2.00	-2.00	0.32
7,500.00	15.60	185.51	7,299.56	-1,309.60	-116.52	-1,307.16	2.00	-2.00	0.37
7,600.00	13.60	185.99	7,396.33	-1,334.69	-119.04	-1,332.19	2.00	-2.00	0.48
7,700.00	11.61	186.63	7,493.91	-1,356.38	-121.43	-1,353.84	2.00	-2.00	0.64
7,800.00	9.62	187.52	7,592.20	-1,374.65	-123.69	-1,372.07	2.00	-1.99	0.90
7,900.00	7.63	188.88	7,691.06	-1,389.49	-125.80	-1,386.86	2.00	-1.99	1.36
8,000.00	5.64	191.18	7,790.39	-1,400.87	-127.78	-1,398.20	2.00	-1.98	2.31
8,100.00	3.68	195.96	7,890.05	-1,408.78	-129.62	-1,406.08	2.00	-1.96	4.77
8,200.00	1.80	211.08	7,989.93	-1,413.21	-131.31	-1,410.47	2.00	-1.88	15.12
8,300.00	0.96	298.54	8,089.91	-1,414.15	-132.85	-1,411.39	2.00	-0.84	87.46
8,400.00	2.57	342.85	8,189.86	-1,411.61	-134.25	-1,408.82	2.00	1.61	44.30
8,500.00	4.51	351.42	8,289.67	-1,405.58	-135.50	-1,402.77	2.00	1.93	8.57
8,600.00	6.48	354.81	8,389.21	-1,396.08	-136.60	-1,393.24	2.00	1.97	3.40
8,700.00	8.47	356.62	8,488.35	-1,383.11	-137.54	-1,380.26	2.00	1.99	1.81
8,800.00	10.46	357.75	8,586.99	-1,366.69	-138.33	-1,363.83	2.00	1.99	1.13
8,900.00	12.45	358.52	8,684.99	-1,346.84	-138.97	-1,343.97	2.00	1.99	0.77
9,000.00	14.45	359.08	8,782.24	-1,323.59	-139.45	-1,320.71	2.00	2.00	0.56
9,100.00	16.44	359.50	8,878.62	-1,296.96	-139.77	-1,294.08	2.00	2.00	0.43
9,177.87	18.00	359.77	8,953.00	-1,273.90	-139.91	-1,271.03	2.00	2.00	0.34
9,200.00	20.21	359.77	8,973.91	-1,266.66	-139.94	-1,263.78	10.00	10.00	0.00
9,300.00	30.21	359.77	9,064.27	-1,224.11	-140.11	-1,221.24	10.00	10.00	0.00
9,400.00	40.21	359.77	9,145.87	-1,166.53	-140.34	-1,163.66	10.00	10.00	0.00
9,500.00	50.21	359.77	9,216.22	-1,095.64	-140.63	-1,092.79	10.00	10.00	0.00
9,600.00	60.21	359.77	9,273.20	-1,013.62	-140.96	-1,010.77	10.00	10.00	0.00
9,700.00	70.21	359.77	9,315.07	-922.95	-141.32	-920.11	10.00	10.00	0.00
9,800.00	80.21	359.77	9,340.56	-826.38	-141.71	-823.55	10.00	10.00	0.00
9,896.22	89.84	359.77	9,348.90	-730.64	-142.09	-727.82	10.00	10.00	0.00
9,900.00	89.84	359.77	9,348.91	-726.86	-142.10	-724.04	0.00	0.00	0.00
10,000.00	89.84	359.77	9,349.20	-626.86	-142.50	-624.05	0.00	0.00	0.00
10,100.00	89.84	359.77	9,349.49	-526.86	-142.91	-524.06	0.00	0.00	0.00
10,200.00	89.84	359.77	9,349.77	-426.86	-143.31	-424.07	0.00	0.00	0.00

# Oxy

## Planning Report

<b>Database:</b>	HOPSPP	<b>Local Co-ordinate Reference:</b>	Well Nimitz MDP1 12_1 Federal Com 14H
<b>Company:</b>	ENGINEERING DESIGNS	<b>TVD Reference:</b>	RKB=26.5' @ 3548.90ft
<b>Project:</b>	PRD NM DIRECTIONAL PLANS (NAD 1983)	<b>MD Reference:</b>	RKB=26.5' @ 3548.90ft
<b>Site:</b>	Nimitz MDP1 12_1	<b>North Reference:</b>	Grid
<b>Well:</b>	Nimitz MDP1 12_1 Federal Com 14H	<b>Survey Calculation Method:</b>	Minimum Curvature
<b>Wellbore:</b>	Wellbore #1		
<b>Design:</b>	Permitting Plan		

Planned Survey									
Measured Depth (ft)	Inclination (°)	Azimuth (°)	Vertical Depth (ft)	+N/-S (ft)	+E/-W (ft)	Vertical Section (ft)	Dogleg Rate (°/100ft)	Build Rate (°/100ft)	Turn Rate (°/100ft)
10,300.00	89.84	359.77	9,350.06	-326.86	-143.71	-324.09	0.00	0.00	0.00
10,400.00	89.84	359.77	9,350.35	-226.87	-144.11	-224.10	0.00	0.00	0.00
10,500.00	89.84	359.77	9,350.63	-126.87	-144.51	-124.11	0.00	0.00	0.00
10,600.00	89.84	359.77	9,350.92	-26.87	-144.91	-24.12	0.00	0.00	0.00
10,700.00	89.84	359.77	9,351.21	73.13	-145.31	75.87	0.00	0.00	0.00
10,800.00	89.84	359.77	9,351.50	173.13	-145.71	175.86	0.00	0.00	0.00
10,900.00	89.84	359.77	9,351.78	273.13	-146.11	275.84	0.00	0.00	0.00
11,000.00	89.84	359.77	9,352.07	373.13	-146.51	375.83	0.00	0.00	0.00
11,100.00	89.84	359.77	9,352.36	473.13	-146.91	475.82	0.00	0.00	0.00
11,200.00	89.84	359.77	9,352.64	573.13	-147.31	575.81	0.00	0.00	0.00
11,300.00	89.84	359.77	9,352.93	673.12	-147.71	675.80	0.00	0.00	0.00
11,400.00	89.84	359.77	9,353.22	773.12	-148.11	775.79	0.00	0.00	0.00
11,500.00	89.84	359.77	9,353.51	873.12	-148.51	875.78	0.00	0.00	0.00
11,600.00	89.84	359.77	9,353.79	973.12	-148.91	975.76	0.00	0.00	0.00
11,700.00	89.84	359.77	9,354.08	1,073.12	-149.31	1,075.75	0.00	0.00	0.00
11,800.00	89.84	359.77	9,354.37	1,173.12	-149.71	1,175.74	0.00	0.00	0.00
11,900.00	89.84	359.77	9,354.65	1,273.12	-150.11	1,275.73	0.00	0.00	0.00
12,000.00	89.84	359.77	9,354.94	1,373.12	-150.51	1,375.72	0.00	0.00	0.00
12,100.00	89.84	359.77	9,355.23	1,473.11	-150.91	1,475.71	0.00	0.00	0.00
12,200.00	89.84	359.77	9,355.52	1,573.11	-151.31	1,575.69	0.00	0.00	0.00
12,300.00	89.84	359.77	9,355.80	1,673.11	-151.71	1,675.68	0.00	0.00	0.00
12,400.00	89.84	359.77	9,356.09	1,773.11	-152.11	1,775.67	0.00	0.00	0.00
12,500.00	89.84	359.77	9,356.38	1,873.11	-152.51	1,875.66	0.00	0.00	0.00
12,600.00	89.84	359.77	9,356.66	1,973.11	-152.91	1,975.65	0.00	0.00	0.00
12,700.00	89.84	359.77	9,356.95	2,073.11	-153.31	2,075.64	0.00	0.00	0.00
12,800.00	89.84	359.77	9,357.24	2,173.11	-153.71	2,175.63	0.00	0.00	0.00
12,900.00	89.84	359.77	9,357.53	2,273.10	-154.11	2,275.61	0.00	0.00	0.00
13,000.00	89.84	359.77	9,357.81	2,373.10	-154.51	2,375.60	0.00	0.00	0.00
13,100.00	89.84	359.77	9,358.10	2,473.10	-154.92	2,475.59	0.00	0.00	0.00
13,200.00	89.84	359.77	9,358.39	2,573.10	-155.32	2,575.58	0.00	0.00	0.00
13,300.00	89.84	359.77	9,358.67	2,673.10	-155.72	2,675.57	0.00	0.00	0.00
13,400.00	89.84	359.77	9,358.96	2,773.10	-156.12	2,775.56	0.00	0.00	0.00
13,500.00	89.84	359.77	9,359.25	2,873.10	-156.52	2,875.54	0.00	0.00	0.00
13,600.00	89.84	359.77	9,359.54	2,973.10	-156.92	2,975.53	0.00	0.00	0.00
13,700.00	89.84	359.77	9,359.82	3,073.09	-157.32	3,075.52	0.00	0.00	0.00
13,800.00	89.84	359.77	9,360.11	3,173.09	-157.72	3,175.51	0.00	0.00	0.00
13,900.00	89.84	359.77	9,360.40	3,273.09	-158.12	3,275.50	0.00	0.00	0.00
14,000.00	89.84	359.77	9,360.68	3,373.09	-158.52	3,375.49	0.00	0.00	0.00
14,100.00	89.84	359.77	9,360.97	3,473.09	-158.92	3,475.48	0.00	0.00	0.00
14,200.00	89.84	359.77	9,361.26	3,573.09	-159.32	3,575.46	0.00	0.00	0.00
14,300.00	89.84	359.77	9,361.55	3,673.09	-159.72	3,675.45	0.00	0.00	0.00
14,400.00	89.84	359.77	9,361.83	3,773.09	-160.12	3,775.44	0.00	0.00	0.00
14,500.00	89.84	359.77	9,362.12	3,873.09	-160.52	3,875.43	0.00	0.00	0.00
14,600.00	89.84	359.77	9,362.41	3,973.08	-160.92	3,975.42	0.00	0.00	0.00
14,700.00	89.84	359.77	9,362.70	4,073.08	-161.32	4,075.41	0.00	0.00	0.00
14,800.00	89.84	359.77	9,362.98	4,173.08	-161.72	4,175.39	0.00	0.00	0.00
14,900.00	89.84	359.77	9,363.27	4,273.08	-162.12	4,275.38	0.00	0.00	0.00
15,000.00	89.84	359.77	9,363.56	4,373.08	-162.52	4,375.37	0.00	0.00	0.00
15,100.00	89.84	359.77	9,363.84	4,473.08	-162.92	4,475.36	0.00	0.00	0.00
15,200.00	89.84	359.77	9,364.13	4,573.08	-163.32	4,575.35	0.00	0.00	0.00
15,300.00	89.84	359.77	9,364.42	4,673.08	-163.72	4,675.34	0.00	0.00	0.00
15,400.00	89.84	359.77	9,364.71	4,773.07	-164.12	4,775.33	0.00	0.00	0.00
15,500.00	89.84	359.77	9,364.99	4,873.07	-164.52	4,875.31	0.00	0.00	0.00
15,600.00	89.84	359.77	9,365.28	4,973.07	-164.92	4,975.30	0.00	0.00	0.00

# Oxy

## Planning Report

<b>Database:</b>	HOPSPP	<b>Local Co-ordinate Reference:</b>	Well Nimitz MDP1 12_1 Federal Com 14H
<b>Company:</b>	ENGINEERING DESIGNS	<b>TVD Reference:</b>	RKB=26.5' @ 3548.90ft
<b>Project:</b>	PRD NM DIRECTIONAL PLANS (NAD 1983)	<b>MD Reference:</b>	RKB=26.5' @ 3548.90ft
<b>Site:</b>	Nimitz MDP1 12_1	<b>North Reference:</b>	Grid
<b>Well:</b>	Nimitz MDP1 12_1 Federal Com 14H	<b>Survey Calculation Method:</b>	Minimum Curvature
<b>Wellbore:</b>	Wellbore #1		
<b>Design:</b>	Permitting Plan		

Planned Survey									
Measured Depth (ft)	Inclination (°)	Azimuth (°)	Vertical Depth (ft)	+N/-S (ft)	+E/-W (ft)	Vertical Section (ft)	Dogleg Rate (°/100ft)	Build Rate (°/100ft)	Turn Rate (°/100ft)
15,700.00	89.84	359.77	9,365.57	5,073.07	-165.32	5,075.29	0.00	0.00	0.00
15,800.00	89.84	359.77	9,365.85	5,173.07	-165.72	5,175.28	0.00	0.00	0.00
15,900.00	89.84	359.77	9,366.14	5,273.07	-166.12	5,275.27	0.00	0.00	0.00
16,000.00	89.84	359.77	9,366.43	5,373.07	-166.53	5,375.26	0.00	0.00	0.00
16,100.00	89.84	359.77	9,366.72	5,473.07	-166.93	5,475.24	0.00	0.00	0.00
16,200.00	89.84	359.77	9,367.00	5,573.06	-167.33	5,575.23	0.00	0.00	0.00
16,300.00	89.84	359.77	9,367.29	5,673.06	-167.73	5,675.22	0.00	0.00	0.00
16,400.00	89.84	359.77	9,367.58	5,773.06	-168.13	5,775.21	0.00	0.00	0.00
16,500.00	89.84	359.77	9,367.86	5,873.06	-168.53	5,875.20	0.00	0.00	0.00
16,600.00	89.84	359.77	9,368.15	5,973.06	-168.93	5,975.19	0.00	0.00	0.00
16,700.00	89.84	359.77	9,368.44	6,073.06	-169.33	6,075.18	0.00	0.00	0.00
16,800.00	89.84	359.77	9,368.73	6,173.06	-169.73	6,175.16	0.00	0.00	0.00
16,900.00	89.84	359.77	9,369.01	6,273.06	-170.13	6,275.15	0.00	0.00	0.00
17,000.00	89.84	359.77	9,369.30	6,373.05	-170.53	6,375.14	0.00	0.00	0.00
17,100.00	89.84	359.77	9,369.59	6,473.05	-170.93	6,475.13	0.00	0.00	0.00
17,200.00	89.84	359.77	9,369.87	6,573.05	-171.33	6,575.12	0.00	0.00	0.00
17,300.00	89.84	359.77	9,370.16	6,673.05	-171.73	6,675.11	0.00	0.00	0.00
17,400.00	89.84	359.77	9,370.45	6,773.05	-172.13	6,775.09	0.00	0.00	0.00
17,500.00	89.84	359.77	9,370.74	6,873.05	-172.53	6,875.08	0.00	0.00	0.00
17,600.00	89.84	359.77	9,371.02	6,973.05	-172.93	6,975.07	0.00	0.00	0.00
17,700.00	89.84	359.77	9,371.31	7,073.05	-173.33	7,075.06	0.00	0.00	0.00
17,800.00	89.84	359.77	9,371.60	7,173.05	-173.73	7,175.05	0.00	0.00	0.00
17,900.00	89.84	359.77	9,371.88	7,273.04	-174.13	7,275.04	0.00	0.00	0.00
18,000.00	89.84	359.77	9,372.17	7,373.04	-174.53	7,375.03	0.00	0.00	0.00
18,100.00	89.84	359.77	9,372.46	7,473.04	-174.93	7,475.01	0.00	0.00	0.00
18,200.00	89.84	359.77	9,372.75	7,573.04	-175.33	7,575.00	0.00	0.00	0.00
18,300.00	89.84	359.77	9,373.03	7,673.04	-175.73	7,674.99	0.00	0.00	0.00
18,400.00	89.84	359.77	9,373.32	7,773.04	-176.13	7,774.98	0.00	0.00	0.00
18,500.00	89.84	359.77	9,373.61	7,873.04	-176.53	7,874.97	0.00	0.00	0.00
18,600.00	89.84	359.77	9,373.89	7,973.04	-176.93	7,974.96	0.00	0.00	0.00
18,700.00	89.84	359.77	9,374.18	8,073.03	-177.33	8,074.94	0.00	0.00	0.00
18,800.00	89.84	359.77	9,374.47	8,173.03	-177.73	8,174.93	0.00	0.00	0.00
18,900.00	89.84	359.77	9,374.76	8,273.03	-178.13	8,274.92	0.00	0.00	0.00
19,000.00	89.84	359.77	9,375.04	8,373.03	-178.54	8,374.91	0.00	0.00	0.00
19,100.00	89.84	359.77	9,375.33	8,473.03	-178.94	8,474.90	0.00	0.00	0.00
19,200.00	89.84	359.77	9,375.62	8,573.03	-179.34	8,574.89	0.00	0.00	0.00
19,300.00	89.84	359.77	9,375.90	8,673.03	-179.74	8,674.88	0.00	0.00	0.00
19,400.00	89.84	359.77	9,376.19	8,773.03	-180.14	8,774.86	0.00	0.00	0.00
19,500.00	89.84	359.77	9,376.48	8,873.02	-180.54	8,874.85	0.00	0.00	0.00
19,600.00	89.84	359.77	9,376.77	8,973.02	-180.94	8,974.84	0.00	0.00	0.00
19,700.00	89.84	359.77	9,377.05	9,073.02	-181.34	9,074.83	0.00	0.00	0.00
19,800.00	89.84	359.77	9,377.34	9,173.02	-181.74	9,174.82	0.00	0.00	0.00
19,900.00	89.84	359.77	9,377.63	9,273.02	-182.14	9,274.81	0.00	0.00	0.00
20,000.00	89.84	359.77	9,377.92	9,373.02	-182.54	9,374.79	0.00	0.00	0.00
20,100.00	89.84	359.77	9,378.20	9,473.02	-182.94	9,474.78	0.00	0.00	0.00
20,200.00	89.84	359.77	9,378.49	9,573.02	-183.34	9,574.77	0.00	0.00	0.00
20,300.00	89.84	359.77	9,378.78	9,673.01	-183.74	9,674.76	0.00	0.00	0.00
20,343.06	89.84	359.77	9,378.90	9,716.07	-183.91	9,717.81	0.00	0.00	0.00

# Oxy

## Planning Report

<b>Database:</b>	HOPSPP	<b>Local Co-ordinate Reference:</b>	Well Nimitz MDP1 12_1 Federal Com 14H
<b>Company:</b>	ENGINEERING DESIGNS	<b>TVD Reference:</b>	RKB=26.5' @ 3548.90ft
<b>Project:</b>	PRD NM DIRECTIONAL PLANS (NAD 1983)	<b>MD Reference:</b>	RKB=26.5' @ 3548.90ft
<b>Site:</b>	Nimitz MDP1 12_1	<b>North Reference:</b>	Grid
<b>Well:</b>	Nimitz MDP1 12_1 Federal Com 14H	<b>Survey Calculation Method:</b>	Minimum Curvature
<b>Wellbore:</b>	Wellbore #1		
<b>Design:</b>	Permitting Plan		

Design Targets									
Target Name	Dip Angle	Dip Dir.	TVD	+N/-S	+E/-W	Northing	Easting	Latitude	Longitude
- hit/miss target	(°)	(°)	(ft)	(ft)	(ft)	(usft)	(usft)		
- Shape									
FTP (Nimitz MDP1 - plan hits target center - Point	0.00	0.00	9,348.90	-730.64	-142.09	446,107.77	697,383.02	32° 13' 31.509380 N	103° 49' 43.340253
PBHL (Nimitz MDP1 - plan hits target center - Point	0.00	0.00	9,378.90	9,716.07	-183.91	456,553.80	697,341.20	32° 15' 14.881636 N	103° 49' 43.255695

Plan Annotations				
Measured Depth	Vertical Depth	Local Coordinates		Comment
(ft)	(ft)	+N/-S (ft)	+E/-W (ft)	
2,792.00	2,792.00	0.00	0.00	Build 2.00°/100'
3,692.19	3,677.45	-139.72	-12.42	Hold 18.00° Tangent
7,379.68	7,184.38	-1,274.97	-113.32	Turn 2.00°/100'
9,177.87	8,953.00	-1,273.90	-139.91	KOP, Build 10.00°/100'
9,896.22	9,348.90	-730.64	-142.09	Landing Point
20,343.06	9,378.90	9,716.07	-183.91	TD at 20343.06' MD





Project: PRD NM DIRECTIONAL PLANS (NAD 1983)  
Site: Nimitz MDP1 12\_1  
Well: Nimitz MDP1 12\_1 Federal Com 14H  
Wellbore: Wellbore #1  
Design: Permitting Plan

PROJECT DETAILS: NM DIRECTIONAL PLANS (NAD 1983)

Geodetic System: US State Plane 1983  
Datum: North American Datum 1983  
Ellipsoid: GRS 1980  
Zone: New Mexico Eastern Zone

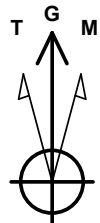
System Datum: Mean Sea Level

WELL DETAILS: Nimitz MDP1 12\_1 Federal Com 14H

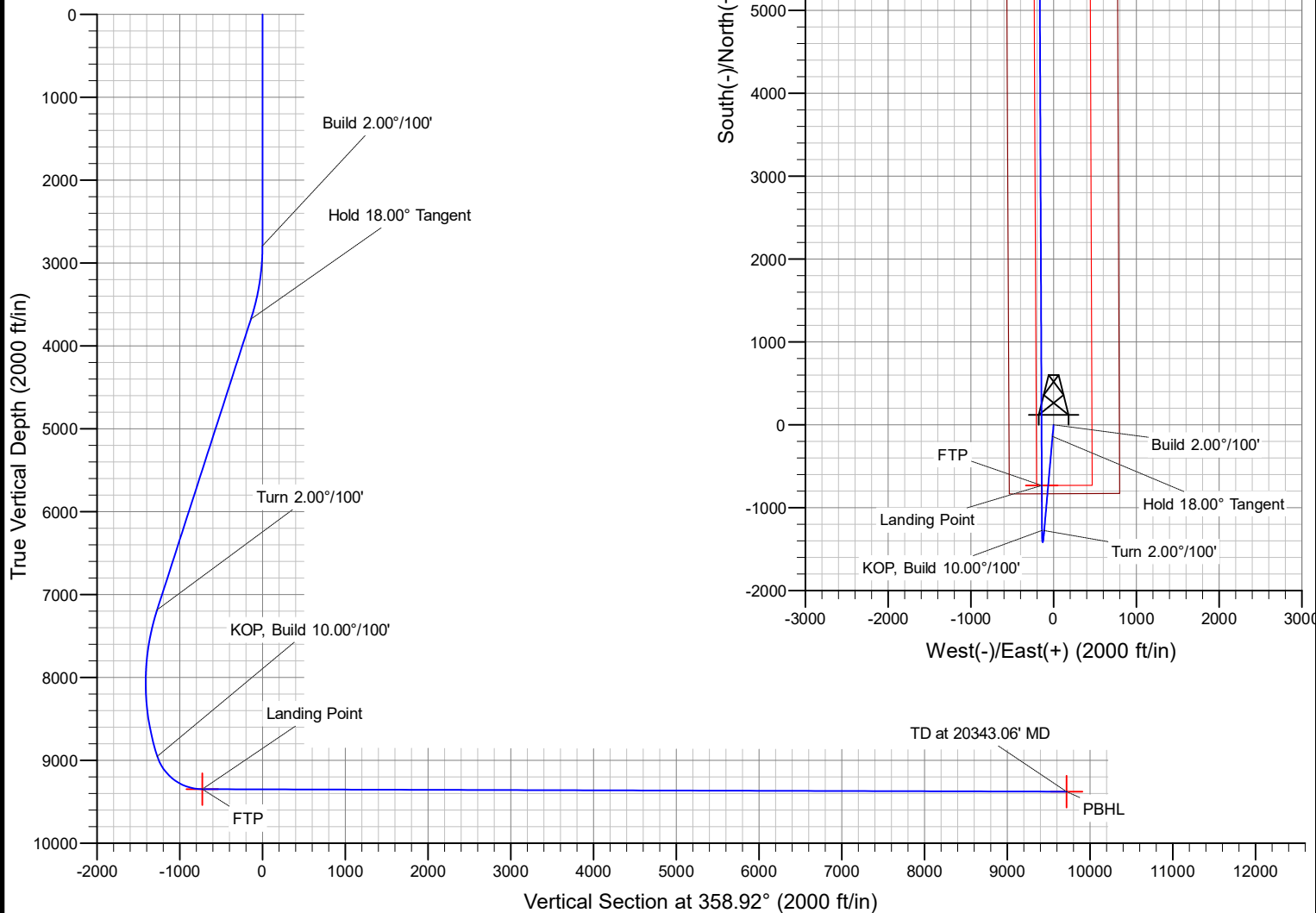
Ground Level: 3522.40  
+N/-S 0.00 +E/-W 0.00 Northing 446838.36 Easting 697525.10 Latitude 32° 13' 38.732455 N Longitude 103° 49' 41.646249 W

SECTION DETAILS

MD	Inc	Azi	TVD	+N/-S	+E/-W	Dleg	TFace	VSec	Annotation
0.00	0.00	0.00	0.00	0.00	0.00	0.00	0.00	0.00	
2792.00	0.00	0.00	2792.00	0.00	0.00	0.00	0.00	0.00	Build 2.00°/100'
3692.19	18.00	185.08	3677.45	-139.72	-12.42	2.00	185.08	-139.46	Hold 18.00° Tangent
7379.68	18.00	185.08	7184.38	-1274.97	-113.32	0.00	0.00	-1272.60	Turn 2.00°/100'
9177.87	18.00	359.77	8953.00	-1273.90	-139.91	2.00	177.21	-1271.03	KOP, Build 10.00°/100'
9896.22	89.84	359.77	9348.90	-730.64	-142.09	10.00	0.00	-727.82	Landing Point
20343.06	89.84	359.77	9378.90	9716.07	-183.91	0.00	0.00	9717.81	TD at 20343.06' MD



Azimuths to Grid North  
True North: -0.27°  
Magnetic North: 6.53°  
  
Magnetic Field  
Strength: 47902.0snT  
Dip Angle: 59.92°  
Date: 7/9/2019  
Model: HDGM



# Oxy USA Inc. - Nimitz MDP1 12\_1 Federal Com 14H

## 1. Geologic Formations

TVD of target	9378'	Pilot Hole Depth	N/A
MD at TD:	20343'	Deepest Expected fresh water:	588'

## Delaware Basin

Formation	TVD - RKB	Expected Fluids
Rustler	588	
Salado	913	Salt
Castile	2,794	Salt
Lamar/Delaware	4,256	Oil/Gas/Brine
Bell Canyon	4,288	Oil/Gas/Brine
Cherry Canyon	5,153	Oil/Gas/Brine
Brushy Canyon	6,381	Losses
Bone Spring	8,114	Oil/Gas
<b>1st Bone Spring</b>	<b>9,083</b>	<b>Oil/Gas</b>

\*H2S, water flows, loss of circulation, abnormal pressures, etc.

## 2. Casing Program

Hole Size (in)	Casing Interval		Csg. Size (in)	Weight (lbs)	Grade	Conn.	SF	SF Burst	Buoyant	Buoyant
	From (ft)	To (ft)					Collapse		Body SF	Joint SF
17.5	0	638	13.375	54.5	J-55	BTC	1.125	1.2	1.4	1.4
12.25	0	4306	9.625	40	L-80	BTC	1.125	1.2	1.4	1.4
8.5	0	20343	5.5	20	P-110	DQX	1.125	1.2	1.4	1.4
SF Values will meet or Exceed										

All casing strings will be tested in accordance with Onshore Oil and Gas Order #2 III.B.1.h

\*Oxy requests the option to set casing shallower yet still below the salts if losses or hole conditions require this. Cement volumes may be adjusted if casing is set shallower and a DV tool may be run in case hole conditions merit pumping a second stage cement job to comply with permitted top of cement. If cement circulated to surface during first stage, we will drop a cancelation cone and not pump the second stage.

\*Oxy requests the option to run production casing with DQX, SF TORQ, and/or DQW TORQ connections to accommodate hole conditions or drilling operations.

## Oxy USA Inc. - Nimitz MDP1 12\_1 Federal Com 14H

### Annular Clearance Variance Request

As per the agreement reached in the Oxy/BLM face-to-face meeting on Feb 22, 2018, Oxy requests permission to allow deviation from the 0.422" annular clearance requirement from Onshore Order #2 under the following conditions:

1. Annular clearance to meet or exceed 0.422" between intermediate casing ID and production casing coupling only on the first 500' overlap between both casings.
2. Annular clearance less than 0.422" is acceptable for the curve and lateral portions of the production open hole section.

	Y or N
Is casing new? If used, attach certification as required in Onshore Order #1	Y
Does casing meet API specifications? If no, attach casing specification sheet.	Y
Is premium or uncommon casing planned? If yes attach casing specification sheet.	Y
Does the above casing design meet or exceed BLM's minimum standards? If not provide justification (loading assumptions, casing design criteria).	Y
Will the intermediate pipe be kept at a minimum 1/3 fluid filled to avoid approaching the collapse pressure rating of the casing?	Y
Is well located within Capitan Reef?	N
If yes, does production casing cement tie back a minimum of 50' above the Reef?	
Is well within the designated 4 string boundary.	
Is well located in SOPA but not in R-111-P?	Y
If yes, are the first 2 strings cemented to surface and 3 <sup>rd</sup> string cement tied back 500' into previous casing?	Y
Is well located in R-111-P and SOPA?	N
If yes, are the first three strings cemented to surface?	
Is 2 <sup>nd</sup> string set 100' to 600' below the base of salt?	
Is well located in high Cave/Karst?	N
If yes, are there two strings cemented to surface?	
(For 2 string wells) If yes, is there a contingency casing if lost circulation occurs?	
Is well located in critical Cave/Karst?	N
If yes, are there three strings cemented to surface?	

### 3. Cementing Program

Casing String	# Sk	Wt. (lb/gal)	Yld (ft3/sack)	H2O (gal/sk)	500# Comp. Strength (hours)	Slurry Description
Surface (Lead)	N/A	N/A	N/A	N/A	N/A	N/A
Surface (Tail)	678	14.8	1.33	6.365	5:26	Class C Cement, Accelerator
Intermediate (Lead)	995	12.9	1.73	8.784	15:26	Pozzolan Cement, Retarder
Intermediate (Tail)	155	14.8	1.33	6.368	7:11	Class C Cement, Accelerator
Production 1st Stage (Lead)	259	13.2	1.38	6.692	17:50	Class H Cement, Retarder, Dispersant, Salt
Production 1st Stage (Tail)	2140	13.2	1.38	6.686	3:49	Class H Cement, Retarder, Dispersant, Salt
2nd Stage Production Lead Slurry to be pumped as Bradenhead Squeeze from surface, down the Production annulus.						
Production 2nd Stage (Tail)	956	12.9	1.872	10.11	21:54	Class C Cement, Accelerator

Casing String	Top (ft)	Bottom (ft)	% Excess
Surface (Lead)	N/A	N/A	N/A
Surface (Tail)	0	638	100%
Intermediate (Lead)	0	3806	50%
Intermediate (Tail)	3806	4306	20%
Production 1st Stage (Lead)	6631	8114	5%
Production 1st Stage (Tail)	8114	20343	5%
Production 2nd Stage (Tail)	0	6631	25%

Oxy requests a variance to cement the 9.625" and/or 7.625" intermediate casing strings offline in accordance to the approved variance, EC Tran 461365.

The summarized operational sequence will be as follows:

- Run casing as per normal operations. While running casing, conduct negative pressure test and confirm integrity of the float equipment (float collar and shoe).
- Land casing.
- Fill pipe with kill weight fluid, and confirm well is static.
  - If well is not static notify BLM and kill well.
  - Once well is static notify BLM with intent to proceed with nipple down and offline cementing.
- Set and pressure test annular packoff.
- After confirmation of both annular barriers and internal barriers, nipple down BOP and install cap flange. If any barrier fails to test, the BOP stack will not be nipped down until after the cement job is completed.
- Skid rig to next well on pad.
- Confirm well is static before removing cap flange.
- If well is not static notify BLM and kill well prior to cementing or nipping up for further remediation.
- Install offline cement tool.
- Rig up cement equipment.
  - Notify BLM prior to cement job.
- Perform cement job.
- Confirm well is static and floats are holding after cement job.
- Remove cement equipment, offline cement tools and install night cap with pressure gauge for monitoring.

#### 4. Pressure Control Equipment

BOP installed and tested before drilling which hole?	Size?	Min. Required WP	Type	✓	Tested to:
12.25" Hole	13-5/8"	3M	Annular	✓	70% of working pressure
		3M	Blind Ram	✓	250 psi / 3000 psi
			Pipe Ram		
			Double Ram	✓	
			Other*		
8.5" Hole	13-5/8"	3M	Annular	✓	70% of working pressure
		3M	Blind Ram	✓	250 psi / 3000 psi
			Pipe Ram		
			Double Ram	✓	
			Other*		

\*Specify if additional ram is utilized.

Oxy will utilize a 5M annular with a 10M BOPE stack. The BOP/BOPE will be tested by an independent service company to 250 psi low and the high pressure indicated above per Onshore Order 2 requirements. The System may be upgraded to a higher pressure but still tested to the working pressure listed in the table above. If the system is upgraded all the components installed will be functional and tested.

Pipe rams will be operationally checked each 24 hour period. Blind rams will be operationally checked on each trip out of the hole. These checks will be noted on the daily tour sheets. Other accessories to the BOP equipment will include a Kelly cock and floor safety valve (inside BOP) and choke lines and choke manifold. See attached schematics.

	Formation integrity test will be performed per Onshore Order #2. On Exploratory wells or on that portion of any well approved for a 5M BOPE system or greater, a pressure integrity test of each casing shoe shall be performed. Will be tested in accordance with Onshore Oil and Gas Order #2 III.B.1.i.
	A variance is requested for the use of a flexible choke line from the BOP to Choke Manifold. See attached for specs and hydrostatic test chart.
Y	Are anchors required by manufacturer?
	A multibowl or a unionized multibowl wellhead system will be employed. The wellhead and connection to the BOPE will meet all API 6A requirements. The BOP will be tested per Onshore Order #2 after installation on the surface casing which will cover testing requirements for a maximum of 30 days. If any seal subject to test pressure is broken the system must be tested. We will test the flange connection of the wellhead with a test port that is directly in the flange. We are proposing that we will run the wellhead through the rotary prior to cementing surface casing as discussed with the BLM on October 8, 2015. See attached schematics.

## **BOP Break Testing Request**

As per the agreement reached in the Oxy/BLM face-to-face meeting on Feb 22, 2018, Oxy requests permission to allow BOP Break Testing under the following conditions:

- After a full BOP test is conducted on the first well on the pad.
- When skidding to drill an intermediate section that the casing point is shallower than the 3<sup>rd</sup> Bone Spring or 10,000 TVD.
- Full BOP test will be required prior to drilling any production hole.

## **5. Mud Program**

<b>Depth</b>		<b>Type</b>	<b>Weight (ppg)</b>	<b>Viscosity</b>	<b>Water Loss</b>
<b>From (ft)</b>	<b>To (ft)</b>				
0	638	Water-Based Mud	8.6-8.8	40-60	N/C
638	4306	Saturated Brine-Based Mud	9.8-10.0	35-45	N/C
4306	20343	Water-Based or Oil-Based Mud	8.0-9.6	38-50	N/C

Sufficient mud materials to maintain mud properties and meet minimum lost circulation and weight increase requirements will be kept on location at all times. The following is a general list of products: Barite, Bentonite, Gypsum, Lime, Soda Ash, Caustic Soda, Nut Plug, Cedar Fiber, Cotton Seed Hulls, Drilling Paper, Salt Water Clay, CACL2. Oxy will use a closed mud system.

What will be used to monitor the loss or gain of fluid?	PVT/MD Totco/Visual Monitoring
---	--------------------------------

## **6. Logging and Testing Procedures**

<b>Logging, Coring and Testing.</b>		
Yes	Will run GR from TD to surface (horizontal well – vertical portion of hole). Stated logs run will be in the Completion Report and submitted to the BLM.	
No	Logs are planned based on well control or offset log information.	
No	Drill stem test? If yes, explain	
No	Coring? If yes, explain	
<b>Additional logs planned</b>		<b>Interval</b>
No	Resistivity	
No	Density	
No	CBL	
Yes	Mud log	ICP - TD
No	PEX	

**7. Drilling Conditions**

<b>Condition</b>	<b>Specify what type and where?</b>
BH Pressure at deepest TVD	4682 psi
Abnormal Temperature	No
BH Temperature at deepest TVD	156°F

Pump high viscosity sweeps as needed for hole cleaning. The mud system will be monitored visually/manually as well as with an electronic PVT. The necessary mud products for additional weight and fluid loss control will be on location at all times. Appropriately weighted mud will be used to isolate potential gas, oil, and water zones until such time as casing can be cemented into place for zonal isolation.

Hydrogen Sulfide (H2S) monitors will be installed prior to drilling out the surface shoe. If H2S is detected in concentrations greater than 100 ppm, the operator will comply with the provisions of Onshore Oil and Gas Order #6. If Hydrogen Sulfide is encountered, measured values and formations will be provided to the BLM.	
N	H2S is present
Y	H2S Plan attached

**8. Other facets of operation**

	<b>Yes/No</b>
Will the well be drilled with a walking/skidding operation? If yes, describe. <ul style="list-style-type: none"> <li>We plan to drill the six well pad in batch by section: all surface sections, intermediate sections and production sections. The wellhead will be secured with a night cap whenever the rig is not over the well.</li> </ul>	Yes
Will more than one drilling rig be used for drilling operations? If yes, describe. <ul style="list-style-type: none"> <li>Oxy requests the option to contract a Surface Rig to drill, set surface casing, and cement for this well. If the timing between rigs is such that Oxy would not be able to preset surface, the Primary Rig will MIRU and drill the well in its entirety per the APD. Please see the attached document for information on the spudder rig.</li> </ul>	Yes

**Total estimated cuttings volume: 1850.1 bbls.**

**Attachments**

- ☒ Directional Plan
- ☒ H2S Contingency Plan
- ☒ Flex III Attachments
- ☒ Spudder Rig Attachment
- ☒ Premium Connection Specs

## Oxy USA Inc. - Nimitz MDP1 12\_1 Federal Com 14H

### 9. Company Personnel

<u>Name</u>	<u>Title</u>	<u>Office Phone</u>	<u>Mobile Phone</u>
Linsay Earle	Drilling Engineer	713-350-4921	832-596-5507
Margaret Giltner	Drilling Engineer Supervisor	713-366-5026	210-683-8480
Simon Benavides	Drilling Superintendent	713-522-8652	281-684-6897
Diego Tellez	Drilling Manager	713-350-4602	713-303-4932





**APD ID:** 10400047504

**Submission Date:** 09/17/2019

**Operator Name:** OXY USA INCORPORATED

**Well Name:** NIMITZ MDP1 12-1 FEDERAL COM

**Well Number:** 14H

**Well Type:** OIL WELL

**Well Work Type:** Drill

## Section 1 - General

**Would you like to address long-term produced water disposal?** NO

## Section 2 - Lined Pits

**Would you like to utilize Lined Pit PWD options?** N

**Produced Water Disposal (PWD) Location:**

**PWD surface owner:**

**PWD disturbance (acres):**

**Lined pit PWD on or off channel:**

**Lined pit PWD discharge volume (bbl/day):**

**Lined pit specifications:**

**Pit liner description:**

**Pit liner manufacturers information:**

**Precipitated solids disposal:**

**Describe precipitated solids disposal:**

**Precipitated solids disposal permit:**

**Lined pit precipitated solids disposal schedule:**

**Lined pit precipitated solids disposal schedule attachment:**

**Lined pit reclamation description:**

**Lined pit reclamation attachment:**

**Leak detection system description:**

**Leak detection system attachment:**

**Operator Name:** OXY USA INCORPORATED

**Well Name:** NIMITZ MDP1 12-1 FEDERAL COM

**Well Number:** 14H

**Lined pit Monitor description:**

**Lined pit Monitor attachment:**

**Lined pit: do you have a reclamation bond for the pit?**

**Is the reclamation bond a rider under the BLM bond?**

**Lined pit bond number:**

**Lined pit bond amount:**

**Additional bond information attachment:**

### Section 3 - Unlined Pits

**Would you like to utilize Unlined Pit PWD options?** N

**Produced Water Disposal (PWD) Location:**

**PWD disturbance (acres):**

**PWD surface owner:**

**Unlined pit PWD on or off channel:**

**Unlined pit PWD discharge volume (bbl/day):**

**Unlined pit specifications:**

**Precipitated solids disposal:**

**Describe precipitated solids disposal:**

**Precipitated solids disposal permit:**

**Unlined pit precipitated solids disposal schedule:**

**Unlined pit precipitated solids disposal schedule attachment:**

**Unlined pit reclamation description:**

**Unlined pit reclamation attachment:**

**Unlined pit Monitor description:**

**Unlined pit Monitor attachment:**

**Do you propose to put the produced water to beneficial use?**

**Beneficial use user confirmation:**

**Estimated depth of the shallowest aquifer (feet):**

**Does the produced water have an annual average Total Dissolved Solids (TDS) concentration equal to or less than that of the existing water to be protected?**

**TDS lab results:**

**Geologic and hydrologic evidence:**

**State authorization:**

**Unlined Produced Water Pit Estimated percolation:**

**Unlined pit: do you have a reclamation bond for the pit?**

**Operator Name:** OXY USA INCORPORATED

**Well Name:** NIMITZ MDP1 12-1 FEDERAL COM

**Well Number:** 14H

**Is the reclamation bond a rider under the BLM bond?**

**Unlined pit bond number:**

**Unlined pit bond amount:**

**Additional bond information attachment:**

#### Section 4 - Injection

**Would you like to utilize Injection PWD options?** N

**Produced Water Disposal (PWD) Location:**

**PWD surface owner:**

**PWD disturbance (acres):**

**Injection PWD discharge volume (bbl/day):**

**Injection well mineral owner:**

**Injection well type:**

**Injection well number:**

**Injection well name:**

**Assigned injection well API number?**

**Injection well API number:**

**Injection well new surface disturbance (acres):**

**Minerals protection information:**

**Mineral protection attachment:**

**Underground Injection Control (UIC) Permit?**

**UIC Permit attachment:**

#### Section 5 - Surface Discharge

**Would you like to utilize Surface Discharge PWD options?** N

**Produced Water Disposal (PWD) Location:**

**PWD surface owner:**

**PWD disturbance (acres):**

**Surface discharge PWD discharge volume (bbl/day):**

**Surface Discharge NPDES Permit?**

**Surface Discharge NPDES Permit attachment:**

**Surface Discharge site facilities information:**

**Surface discharge site facilities map:**

#### Section 6 - Other

**Would you like to utilize Other PWD options?** N

**Produced Water Disposal (PWD) Location:**

**PWD surface owner:**

**PWD disturbance (acres):**

**Other PWD discharge volume (bbl/day):**

**Operator Name:** OXY USA INCORPORATED

**Well Name:** NIMITZ MDP1 12-1 FEDERAL COM

**Well Number:** 14H

**Other PWD type description:**

**Other PWD type attachment:**

**Have other regulatory requirements been met?**

**Other regulatory requirements attachment:**



U.S. Department of the Interior  
BUREAU OF LAND MANAGEMENT

## Bond Info Data Report

09/08/2020

**APD ID:** 10400047504

**Submission Date:** 09/17/2019

Highlighted data  
reflects the most  
recent changes

**Operator Name:** OXY USA INCORPORATED

**Well Name:** NIMITZ MDP1 12-1 FEDERAL COM

**Well Number:** 14H

[Show Final Text](#)

**Well Type:** OIL WELL

**Well Work Type:** Drill

### Bond Information

**Federal/Indian APD:** FED

**BLM Bond number:** ESB000226

**BIA Bond number:**

**Do you have a reclamation bond?** NO

**Is the reclamation bond a rider under the BLM bond?**

**Is the reclamation bond BLM or Forest Service?**

**BLM reclamation bond number:**

**Forest Service reclamation bond number:**

**Forest Service reclamation bond attachment:**

**Reclamation bond number:**

**Reclamation bond amount:**

**Reclamation bond rider amount:**

**Additional reclamation bond information attachment:**