

DISTRICT I
1625 N. FRENCH DR., HOBBS, NM 88240
DISTRICT II
1301 W. GRAND AVENUE, ARTESIA, NM 88210
DISTRICT III
1000 RIO BRAZOS RD., AZTEC, NM 87410
DISTRICT IV
11885 S. ST. FRANCIS DR., SANTA FE, NM 87505

State of New Mexico
Energy, Minerals & Natural Resources Department
OIL CONSERVATION DIVISION
1220 South St. Francis Dr.
Santa Fe, New Mexico 87505

Form C-102
Revised July 16, 2010
Submit to Appropriate
District Office

☐ AMENDED REPORT

WELL LOCATION AND ACREAGE DEDICATION PLAT

API Number 30-015 - 39336	Pool Code 28509	Pool Name Grayburg Jackson; SR-Q-G-SA
Property Code 308195	Property Name DODD FEDERAL UNIT	Well Number 541
OGRID No. 229137	Operator Name COG OPERATING, LLC	Elevation 3627'

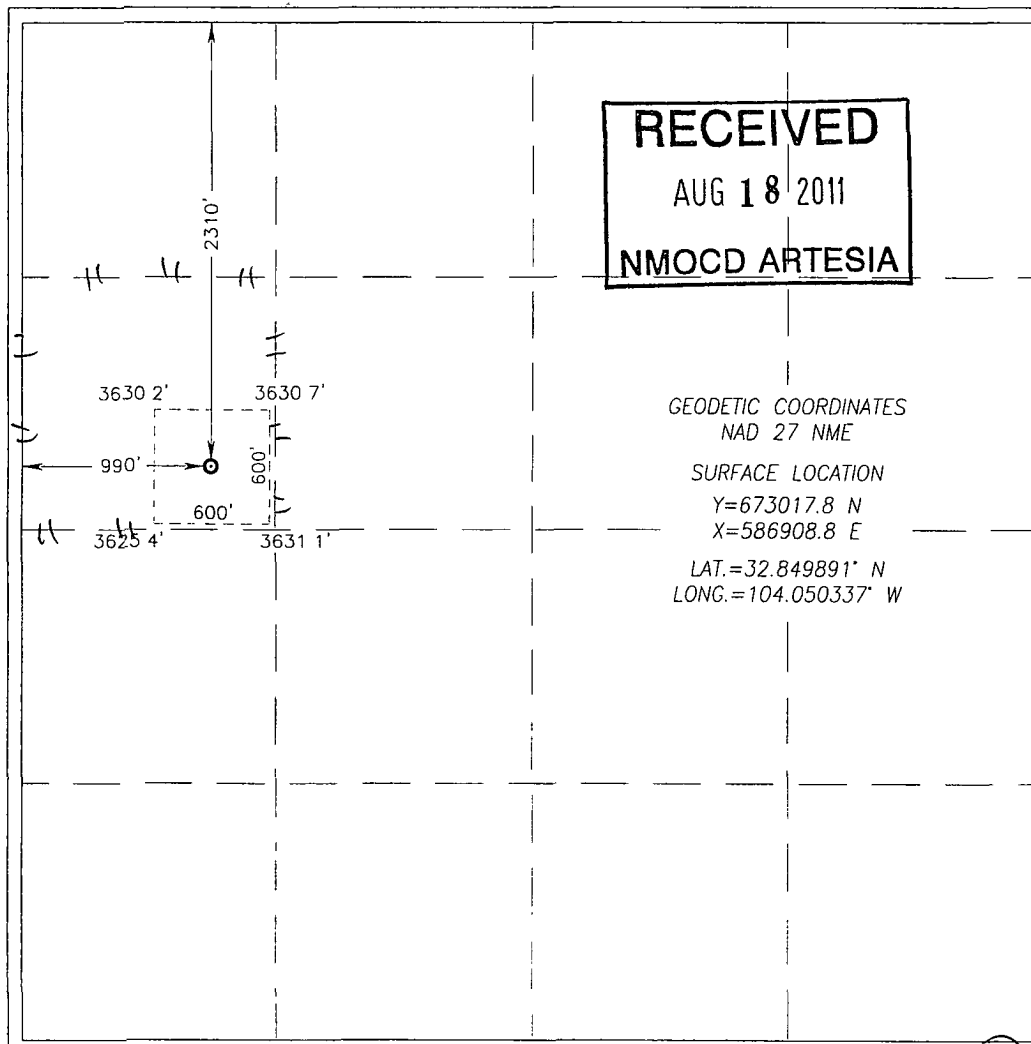
Surface Location

UL or lot No. E	Section 11	Township 17-S	Range 29-E	Lot Idn	Feet from the 2310	North/South line NORTH	Feet from the 990	East/West line WEST	County EDDY
--------------------	---------------	------------------	---------------	---------	-----------------------	---------------------------	----------------------	------------------------	----------------

Bottom Hole Location If Different From Surface

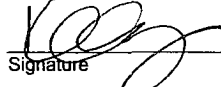
UL or lot No.	Section	Township	Range	Lot Idn	Feet from the	North/South line	Feet from the	East/West line	County
Dedicated Acres 40	Joint or Infill	Consolidation Code	Order No						

NO ALLOWABLE WILL BE ASSIGNED TO THIS COMPLETION UNTIL ALL INTERESTS HAVE BEEN CONSOLIDATED OR A NON-STANDARD UNIT HAS BEEN APPROVED BY THE DIVISION



OPERATOR CERTIFICATION

I hereby certify that the information herein is true and complete to the best of my knowledge and belief, and that this organization either owns a working interest or unleased mineral interest in the land including the proposed bottom hole location or has a right to drill this well at this location pursuant to a contract with an owner of such mineral or working interest, or to a voluntary pooling agreement or a compulsory pooling order heretofore entered by the division.

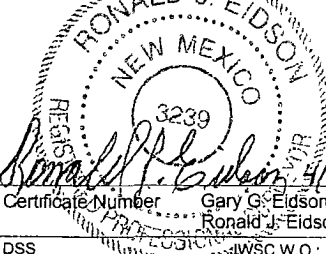
 4-21-11
Signature Date
Kelly J. Holly
Printed Name
kholly@conchoresources.com
E-mail Address

SURVEYOR CERTIFICATION

I hereby certify that the well location shown on this plat was plotted from field notes of actual surveys made by me or under my supervision, and that the same is true and correct to the best of my belief.

APRIL 12, 2011

Date of Survey
Signature & Seal of Professional Surveyor:


Certificate Number Gary G. Eidson 12641
Ronald J. Eidson 3239
DSS WSC W.O.: 11.11 0117