

ATS-11-536

OCD-ARTESIA

Form 3160-3
(April 2004)

UNITED STATES
DEPARTMENT OF THE INTERIOR
BUREAU OF LAND MANAGEMENT

APPLICATION FOR PERMIT TO DRILL OR REENTER

FORM APPROVED
OMB No 1004-0137
Expires March 31, 2007

EA 687

1a. Type of work: <input type="checkbox"/> DRILL <input checked="" type="checkbox"/> REENTER		5. Lease Serial No. LC 029395B
1b. Type of Well: <input type="checkbox"/> Oil Well <input type="checkbox"/> Gas Well <input checked="" type="checkbox"/> Other <input checked="" type="checkbox"/> Single Zone <input type="checkbox"/> Multiple Zone		6. If Indian, Allottee or Tribe Name
2. Name of Operator Judah Oil, L.L.C. <249872>		7. If Unit or CA Agreement, Name and No.
3a. Address PO Box 568 Artesia, NM 88210		8. Lease Name and Well No. SWD Ony Jamoca Federal # 1
3b. Phone No. (include area code) 575-748-5488		9. API Well No. 30-015-32265
4. Location of Well (Report location clearly and in accordance with any State requirements *) At surface 900 FNL x 660 FEL, UL "A", Section 29, T17S, R31E Eddy County, NM At proposed prod. zone		10. Field and Pool, or Exploratory SWD; Wolfcamp
11. Sec., T. R. M. or Blk and Survey or Area Section 29 T17S, R31E, Eddy County, NM NMPM		12. County or Parish Eddy
13. State NM		14. Distance in miles and direction from nearest town or post office* 6 miles NE Loco Hills, New Mexico
15. Distance from proposed* location to nearest property or lease line, ft (Also to nearest drig. unit line, if any) 660	16. No. of acres in lease	17. Spacing Unit dedicated to this well
18. Distance from proposed location* to nearest well, drilling, completed, applied for, on this lease, ft	19. Proposed Depth 9750	20. BLM/BIA Bond No. on file NMB 000451
21. Elevations (Show whether DF, KDB, RT, GL, etc.) 3754 GL	22. Approximate date work will start* ASAP after BLM approval	23. Estimated duration 6 days
24. Attachments		

The following, completed in accordance with the requirements of Onshore Oil and Gas Order No. 1, shall be attached to this form:

- | | |
|---|--|
| 1. Well plat certified by a registered surveyor. | 4. Bond to cover the operations unless covered by an existing bond on file (see Item 20 above). |
| 2. A Drilling Plan. | 5. Operator certification |
| 3. A Surface Use Plan (if the location is on National Forest System Lands, the SUPO shall be filed with the appropriate Forest Service Office). | 6. Such other site specific information and/or plans as may be required by the authorized officer. |

25. Signature Billy E. Prichard	Name (Printed/Typed) Billy E. Prichard	Date 2/6/11
Title Agent for Judah Oil, L.L.C.		

Approved by (Signature) /s/ Don Peterson	Name (Printed/Typed)	Date JUL 25 2011
Title FIELD MANAGER	Office CARLSBAD FIELD OFFICE	

Application approval does not warrant or certify that the applicant holds legal or equitable title to those rights in the subject lease which would entitle the applicant to conduct operations thereon.

Conditions of approval, if any, are attached.

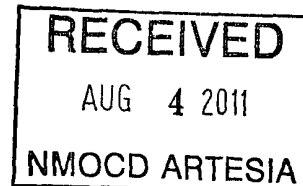
APPROVAL FOR TWO YEARS

Title 18 U.S.C. Section 1001 and Title 43 U.S.C. Section 1212, make it a crime for any person knowingly and willfully to make to any department or agency of the United States any false, fictitious or fraudulent statements or representations as to any matter within its jurisdiction.

*(Instructions on page 2)

Approval Subject to General Requirements
& Special Stipulations Attached

SEE ATTACHED FOR
CONDITIONS OF APPROVAL



Accepted for record
NMOCD

JUDAH OIL, LLC

Oil and Gas Operating

January 6, 2011

DESIGNATION OF AGENT

Bureau of Land Management
Carlsbad Field Office
620 E Greene Street
Carlsbad, NM 88220

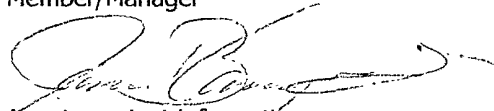
RE: Agent Authorization

Gentlemen:

Please be informed that Billy (Bill) Prichard with Pueblo West Consulting is an Agent employed by Judah Oil, LLC. He is authorized to prepare and submit APDs, Right of Way applications, and other BLM-required forms.

Sincerely yours,

James B Campanella
Member/Manager



Agents contact information:

Billy (Bill) Prichard
Pueblo West Consulting
125 Greathouse Village
Decatur, TX 76234

Phone – 432-934-7680
billy@pwllc.net

P.O. Box 568
611 W Mahone, Suite D
Artesia, NM 88211-0568

Office: (505) 746-1280
Fax: (505) 746-1290
E-Mail: judahoil@yahoo.com

JUDAH OIL, LLC

Oil and Gas Operating

March 14, 2011

Bureau of Land Management
Oil and Gas Division
2909 W. Second Street
Roswell, NM 88201-2019

Re: Jamoca Fed. #1

UL-A, Sec-29, T-17S, R-31-E

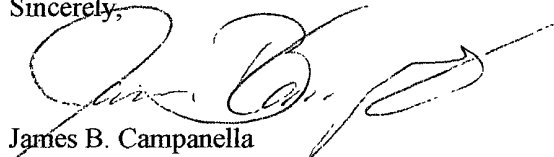
990' FNL, 660 FEL, Eddy Co, NM

To Whom It May Concern:

Judah Oil, LLC assumes all financial responsibility, for re-entry, operating, plugging, and abandoning, for the Jamoca Federal #1. Judah will follow all State and Federal laws and regulations in the operation of this property.

This well is bonded with New Mexico statewide bond # NMB000451, with addition bonding, bond #1057961.

Sincerely,



James B. Campanella
Member/Manager

Enc/tav

P.O. Box 568
611 W Mahone, Suite D
Artesia, NM 88211-0568

Office: (575) 746-1280
Fax: (575) 746-1290
E-Mail: judahoil@yahoo.com

JUDAH OIL, LLC

Oil and Gas Operating
jbc@judahoil.com

June 2, 2011

United States Department of the Interior
Bureau of Land Management
Carlsbad District Office
620 E. Greene Street
Carlsbad, NM 88220

Bureau of Land Management
RECEIVED
JUN 03 2011
Carlsbad Field Office
Carlsbad, N.M.

Re: Application for Permit to Drill (Re-Enter)
Judah Oil, LLC
Jamoca Federal #1
Eddy County, New Mexico
ROW Permit – Pending

Gentlemen:

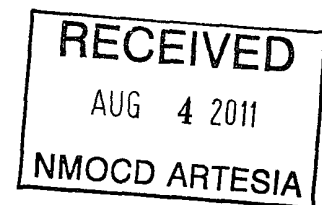
Judah Oil, LLC respectfully requests permission to re-enter the Jamoca Federal #A1 located 900 FNL and 660 FEL, Section 29, T-17-S, R-31-E, Eddy County, New Mexico. This well was drilled and completed by Oxy USA WATP Limited Partnership on 11/14/2002. Initial completion was in the Morrow Formation through perms 11,640' – 11,662'. The well stopped producing in August 2004. It was P/A'd by Oxy in January 2009.

Judah plans to re-enter the Jamoca Federal #1 wellbore and convert to a Commercial SWD with the proposed injection zone being the Wolfcamp Formation, the perforations 8890' – 9685'. The location and work area have been staked. It is approximately 6 miles north east of Loco Hills, New Mexico.

In accordance with requirements stipulated in Federal Onshore Oil and Gas Order No. 1 under 43 CFR 3162.1, our Application for Permission to Drill (Re-Enter) and supporting evidence is hereby submitted.

I. Application for Permit to Drill (Re-Enter).

(1) Form 3160.3 Application for Permit to Drill



Accepted for record
NMOC D

P.O. Box 568
611 W Mahone, Suite D
Artesia, NM 88211-0568

Office: (575) 746-1280
Fax: (575) 746-1290
E-Mail: judahoil@yahoo.com

- (2) Form C-102 Location and Acreage Dedication Plat certified by Gary L. Jones, Registered Land Surveyor No. 7977 in the State of New Mexico, dated September 1, 2001, and was previously submitted by Oxy USA in the original APD dated March 11, 2002.
- (3) The elevation of the current P/A'd location is 3754 feet above sea level.
- (4) The geologic name of the surface formation is Permian Rustler.
- (5) A Pulling Unit with Reverse Rig will be utilized to re-enter the wellbore. The casing is existing and has cement circulated behind all string.
- (6) Proposed injection depth is 8890' – 9685'. A Cast Iron Bridge Plug will be set below perfs at 9750' +/- . The Injection Packer will be set at 8800' +/-.
- (7) The tops of important geologic markers. (Previously submitted by Oxy6 USA on Form 3160-4 dated January 8, 2003, **Exhibit "A"**.

Abo	7100' (estimated)
Wolfcamp	8504'
Penn	9864'
Strawn	10,706'
Atoka	11,004'
Morrow	11,326'

- (8) Possible water, oil, gas or other mineral bearing formations which may be encountered:
Primary Objective: Wolfcamp 8890'

(9) Pressure Control Equipment

The blowout preventer equipment (BOP) shown in **Exhibit "B"** will consist of a double ram type (3000 psi WP) consisting of 2 3/8" pipe rams on top and blind rams on bottom. Both units are manually operated. A 900 series flanged casing head with a maximum WP of 3000#'s will be installed on 5 1/2" 17# production casing and utilized continuously until total depth is reached and the well completion is complete. All BOP and associated equipment will be tested before drilling out the surface plug and before perforating procedure begins. Pipe rams will be operated and checked each 24 hours and each time the workover string is pulled out of the hole. These functions will be documented on daily work-over reports. A 2" kill line and a 2" choke line will be installed on the casing spool below the ram type BOP. Other accessory BOP equipment will include a choke manifold shown in **Exhibit "C"** and choke line having a WP rating of 3000 psi, will be set prior to perforating.

P.O. Box 568
611 W Mahone, Suite D
Artesia, NM 88211-0568

Office: (575) 746-1280
Fax: (575) 746-1290
E-Mail: judah@judah.com

(10) Casing & Cementing Program

All casing is existing and was cemented in place when the well was originally drilled.

Surface:

Hole Size	Interval	OD Csg	Weight	Collar	Grade	Collapse	Burst	Tension
						DF	DF	DF
17 1/2"	0-430	13 3/8"	48#	ST&C	H40	1.97	3.7	9.01J

*Cement circulated with 200 sx 35:65 POZ/C with 6% Bentonite + 2% CaCL₂ = .25#/sx Cello-Seal followed by .150 sx CL "C" with 2% CaCL₂.

Intermediate:

Hole Size	Interval	OD Csg	Weight	Collar	Grade	Collapse	Burst	Tension
						DF	DF	DF
12 1/4"	430'-4517'	9 5/8"	36-40#	ST7E	K-55	1.18	1.73	3.44J

*DV Tool set at 2515'. Circulated casing w/rig pump & wash 60' to bottom. Pumped 1st Stage cement, 400 sx 35:65:6 POZ, tailed w/200 sx "C". Displaced 2/200 bbls FW & then 137 bbls mud. Bumped plug w/1233 psi. Bleed pressure, float holding. Drop bomb & open DV tool. Circulated DV tool. Circulated some cement off of DV tool. Cemented 2nd stage w/200 sx Thixotropic, 1300 sx 35:64:6 POZ & tailed w/100 sx "C". Circulated 125 sx to pit. Bumped plug 2/1619 psi, close DV tool.

Production:

Hole Size	Interval	OD Csg	Weight	Collar	Grade	Collapse	Burst	Tension
						DF	DF	DF
8 3/4"	4517'-11,904'	5 1/2"	17#	LT&C	L-80/P-110	/1.12	/1.31	/1.89J

*Pumped 1000 Gals Surebond 3 ahead. Pumped 1740 sx lead, tailed w/100 sx. Displaced w/274 bbls FW. Bumped plug w/3000 psi. Bled off pressure, float holding. Had full returns thru out cement job.

RIH w/ CBL from 3400'-11,789', TOC @ 4020'. Perf 2 squeeze holes @ 3775', M&P 850 sx CL "C" cement w/2% CaCL₂, circ 68 sx cement to pit.

(11) Mud Program

Will encounter mud weights of 8.4 ppg to 10 ppg as cement plugs are drilled out from surface to 9800'.

P.O. Box 568
611 W Mahone, Suite D
Artesia, NM 88211-0568

Office: (575) 746-1280
Fax: (575) 746-1290
E-Mail: jw.mahon@yahoo.com

(12) Well Testing *See COA*

All perforated intervals will be tested for economical quantities of hydrocarbons. The findings will be reported to the Carlsbad BLM Field Office after testing has been completed.

(13) No lost circulation is expected. No H₂S was encountered during the original drilling and completion of this well therefore no abnormal temperatures or H₂S gas are anticipated. The highest anticipated BHP would be 4400 psi.

(14) The start date for the re-entry will be upon BLM approval of this application. It should take approximately 21 days to complete the re-entry process.

(15) Multi-Point Surface Use and Operation Plan is attached.

Should any additional information be needed, please feel free to call me at 575-748-5488 on my cell phone or the office at 575-746-1280.

Truly yours,



James B Campanella
Member/Manager
Judah Oil, LLC

Jbc/dk
Attachments

P.O. Box 568
611 W Mahone, Suite D
Artesia, NM 88211-0568

Office: (575) 746-1280
Fax: (575) 746-1290
E-Mail: judahoil@yahoo.com

Judah Oil,L.L.C.
Oxy Jamoca Federal # 001
API # 30-015-32265

900 FNL x 660 FEL Unit Letter "A", Section 29, T17S,R31E, Eddy County, New Mexico
Per NMOCD SWD-1249

PROPOSED TD: 9750 feet

BOP PROGRAM: 0 to 9750feet - 7 1/16th 3M Hydraulic Double with pipe & blind rams

CASING IN PLACE AS FOLLOWS:

13 3/8" 48# H40 casing set in 17 1/2" hole at 430 feet. Cemented with 580 sacks of cement. Cement topped off with 5 yards of Readi-Mix cement.

9 5/8" 36#,40# K55 & N80 casing set in 12 1/4" hole at 4517 feet. DV Tool at 2515 feet. Cemented in 2 Stages as follows.

Stage 1 - 400 SX 35:63:6 POZ, TAILED WI 200 SX "C". Cement circulated

Stage 2 - 200 SX THIXOTROPIC, 1300 SX 35:64:6 POZ & TAILED w/ 100 SX "C". Circulated to surface.

5 1/2"17# P-110 & L80 casing set in 8 3/4" hole at 11904 feet.

Cemented with 1740 SX LEAD, TAILED w/ 100 SX.

No record of cement types

Cement Bond log indicated TOC at 4020 feet. Perforated at 3775 feet and circulated cement to the surface with 850 sacks Class "C" cement.

Morrow perforations

11558-11562 feet

11640-11662 feet

Well PA 1/5/2009

MUD: 0 – 9750ft Fresh/Brine Weight 8.9-9.2 ppg, Vis 28-30 sec

Additional well in NENE (A) Sec 29 T17S R31E

1. Linn Operating, Inc.	Turner B -- 91	140 FNL	1300 FEL	3001526603
2. Arco O&G Corp.	Turner B -- 74	330 FNL	990 FEL	3001505456
3. Lynn Operating, Inc.	Turner B -- 59	560 FNL	660 FEL	3001505446
4. Socorro Petr. Co.	Turner B -- 22	660 FNL	660 FEL	3001505439

OXY USA WTP LP - Proposed
OXY Jamoca Federal #1
API No. 30-015-32265

20sx Surface

25sx @ 500-380' WOC-Tag

25sx @ 1610-1500'

30sx @ 2580-2450'

30sx @ 3845-3705'

30sx @ 4590-4445' WOC-Tag

Tagged per plugging report at 4019 feet

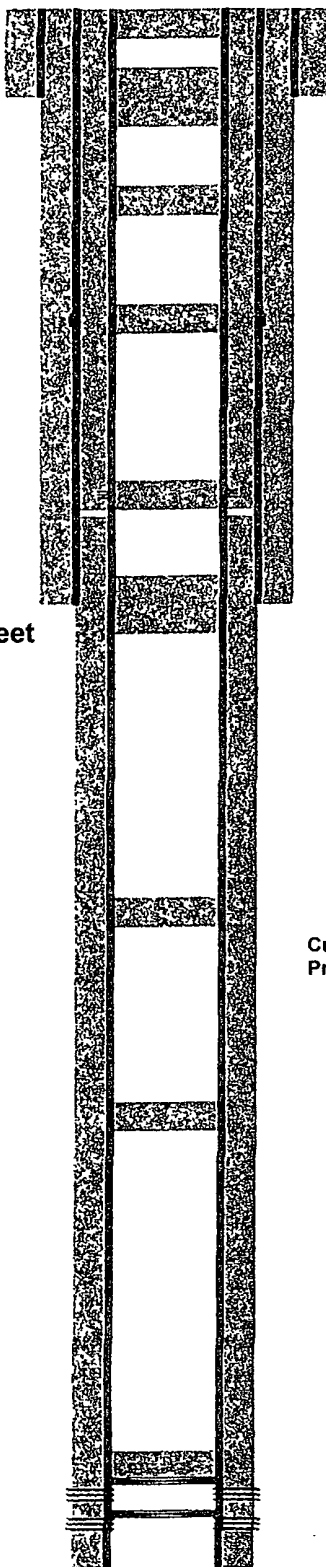
35sx @ 7135-6965'

35sx @ 8600-8410'

40sx @ 11464-11276'

4/07-CIBP @ 11500' w/ 4sx cmt

2/07-CIBP @ 11600'



TD-11908'

17-1/2" hole @ 430'

13-3/8" csg @ 430'

w/580sx-TOC-Surf-Circ

12-1/4" hole @ 4517'

9-5/8" csg @ 4517'

DV Tool @ 2515'

1st w/600sx-TOC-2510'-Circ

2nd w/1400sx-TOC-Surf-Circ

*11/02-Perf @ 3775'sqz 840sx circ cmt to surf

Exhibit B

Current well diagram
Prior to Re-entry

8-3/4" hole @ 11908'

5-1/2" csg @ 11904'

w/1840sx-*TOC-4020'-CBL

Perfs @ 11558-11562'

Perfs @ 11640-11662'

Oxy Jamoca Federal # 001
API # 30-015-32265
UL"A", Sec.29,T17S,R31E
Eddy, County, NM
After Conversion

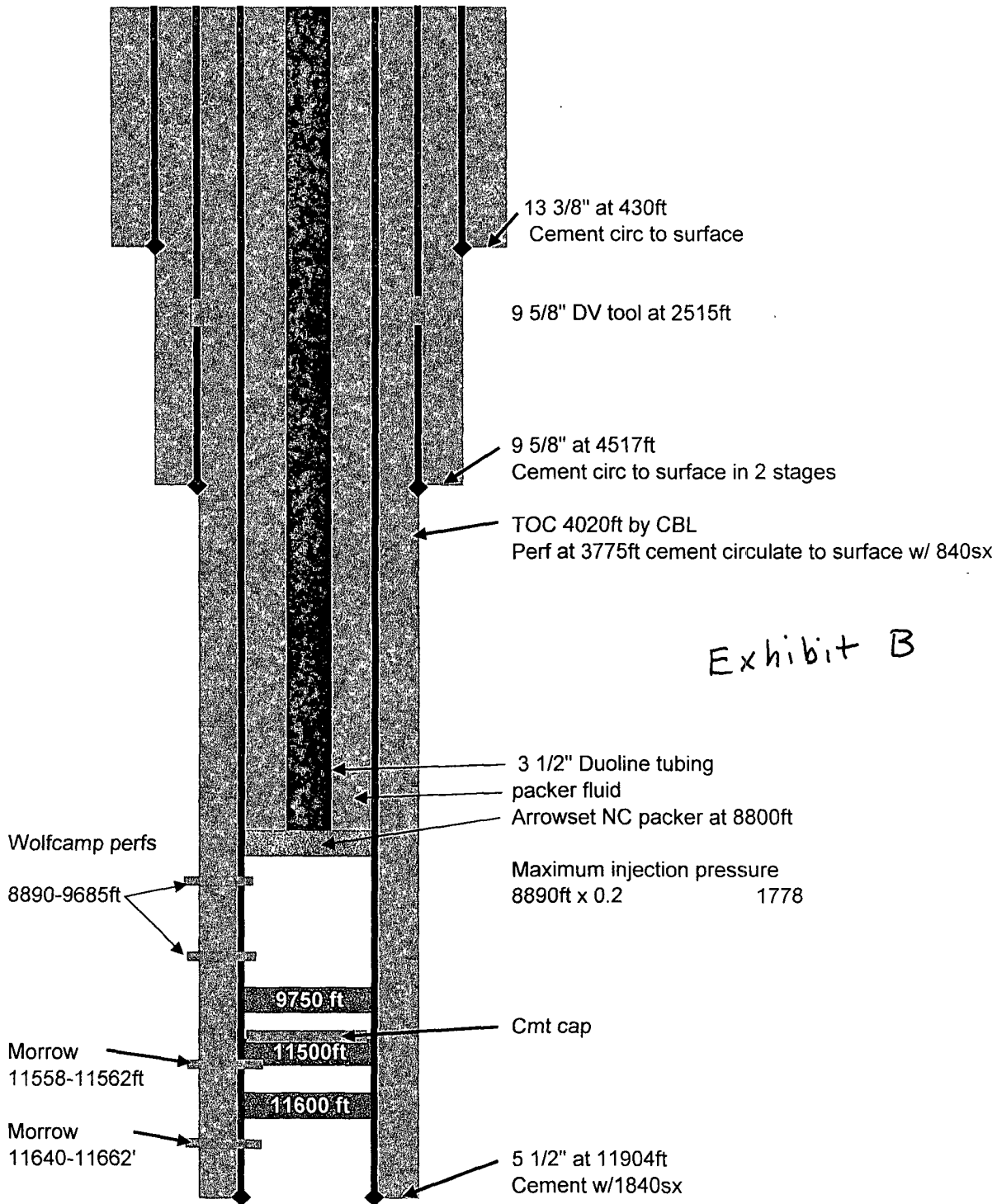


Exhibit B

Drawing not to scale

BEP

www.pwllc.net

Judah Oil, L.L.C.
Oxy Jamoca Federal # 001
API 30-015-32265
Exhibit A

7 1/16" x 3000 Hydraulic Double BOP

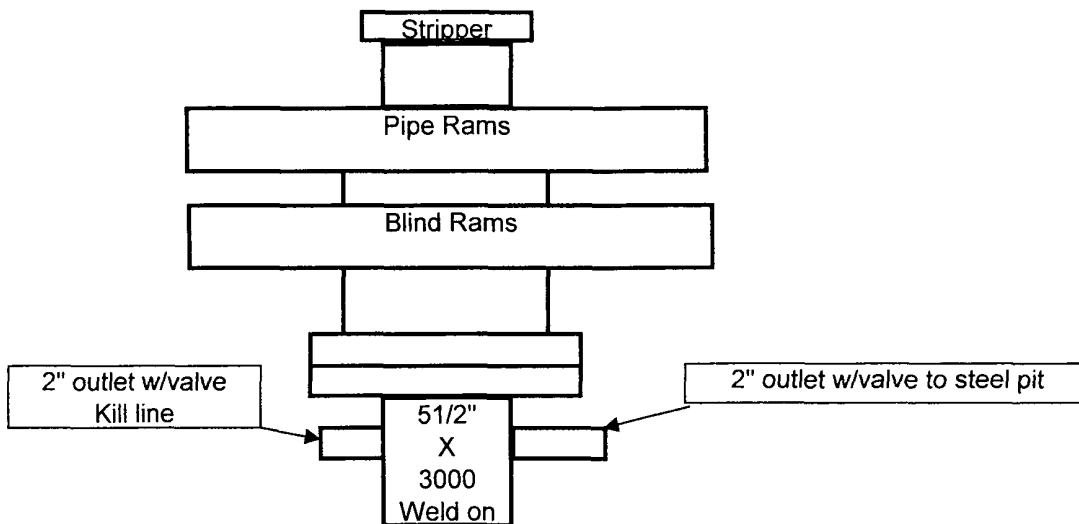
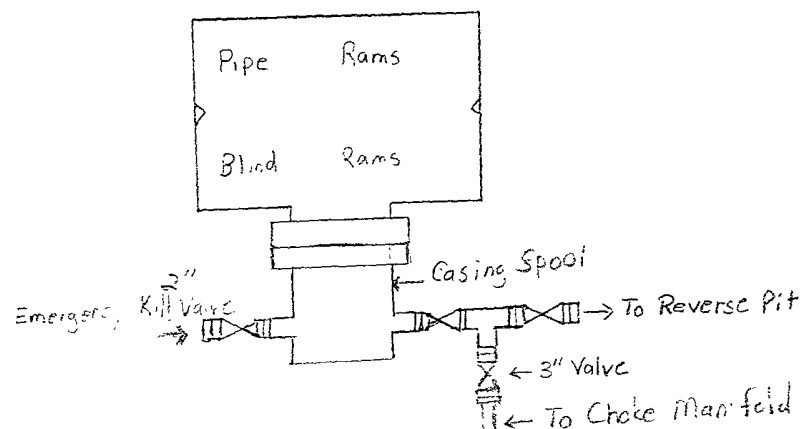
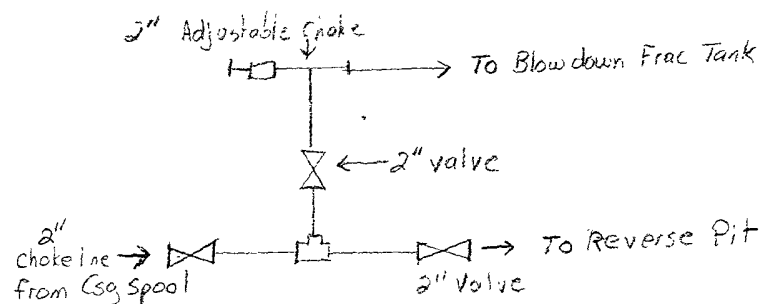


Exhibit "B"

Blowout Preventor Scheme



7 1/16" 3000# ram type preventers with one set blind rams and one set 2 3/8 pipe rams. BOP is manually operated.



Choke Manifold Scheme