

Submit 1 Copy To Appropriate District Office
District I - (575) 393-6161
1625 N French Dr., Hobbs, NM 88240
District II - (575) 748-1283
811 S First St., Artesia, NM 88210
District III - (505) 334-6178
1000 Rio Brazos Rd., Aztec, NM 87410
District IV - (505) 476-3460
1220 S. St. Francis Dr., Santa Fe, NM 87505

State of New Mexico
Energy, Minerals and Natural Resources

Form C-103
October 13, 2009

OIL CONSERVATION DIVISION
1220 South St. Francis Dr.
Santa Fe, NM 87505

WELL API NO. 30-015-26008
5. Indicate Type of Lease STATE <input type="checkbox"/> FEE <input type="checkbox"/> FED <input type="checkbox"/>
6. State Oil & Gas Lease No.
7. Lease Name or Unit Agreement Name HUDSON FEDERAL
8. Well Number: 006
9. OGRID Number 269324
10. Pool name or Wildcat GRAYBURG JACKSON;SR-Q-G-SA

SUNDRY NOTICES AND REPORTS ON WELLS
(DO NOT USE THIS FORM FOR PROPOSALS TO DRILL OR TO DEEPEN OR PLUG BACK TO A DIFFERENT RESERVOIR USE "APPLICATION FOR PERMIT" (FORM C-101) FOR SUCH PROPOSALS)

1. Type of Well: Oil Well ☐ Gas Well ☒ Other INJECTION

2. Name of Operator
LINN OPERATING, INC.

3. Address of Operator
600 TRAVIS, SUITE 5100, HOUSTON, TEXAS 77002

4. Well Location
Unit Letter _____ H: 2310 feet from the _____ N line and _____ 990 feet from the _____ E line
Section 18 Township 17S Range 31E NMPM EDDY County

11. Elevation (Show whether DR, RKB, RT, GR, etc.)
3,699' GL

12. Check Appropriate Box to Indicate Nature of Notice, Report or Other Data

NOTICE OF INTENTION TO:

PERFORM REMEDIAL WORK ☐ PLUG AND ABANDON ☐
TEMPORARILY ABANDON ☐ CHANGE PLANS ☐
PULL OR ALTER CASING ☒ MULTIPLE COMPL ☐
DOWNHOLE COMMINGLE ☐

SUBSEQUENT REPORT OF:

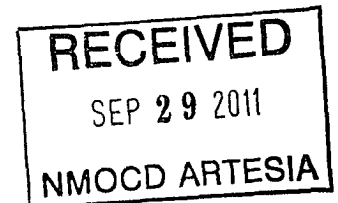
REMEDIAL WORK ☐ ALTERING CASING ☐
COMMENCE DRILLING OPNS. ☐ P AND A ☐
CASING/CEMENT JOB ☐

OTHER: RETURN TO PRODUCTION ☒

OTHER: ☐

13. Describe proposed or completed operations. (Clearly state all pertinent details, and give pertinent dates, including estimated date of starting any proposed work). SEE RULE 19.15.7.14 NMAC. For Multiple Completions: Attach wellbore diagram of proposed completion or recompletion.

PLEASE SEE ATTACHED LINER INSTALL PROCEDURES



Spud Date:

Rig Release Date:

I hereby certify that the information above is true and complete to the best of my knowledge and belief.

SIGNATURE Terry B. Callahan TITLE: REGULATORY SPECIALIST III DATE SEPTEMBER 29, 2011

Type or print name TERRY B. CALLAHAN E-mail address: tcallahan@linnenergy.com PHONE: 281-840-4272

For State Use Only

APPROVED BY: T. C. Shepard TITLE: Geologist DATE: OCT 13 2011

Conditions of Approval (if any):

Hudson Federal 6

EDDY COUNTY, NM

H-18-17S-31E. 2310 FNL 990 FEL

30-015-26008

9/29/11

Project Scope: Install 4" Flush Joint Liner from top perforation to surface

Non Routine Equipment Needs:

4", 10.47#, L-80 Ultra Flush Joint – Purchased
Lift Nubbins and Stabbing Cup – Rental
4" Packer
New Wellhead components for 4" Liner
Casing Crew
Cementing Services

Procedure:

1. Test anchors prior to rigging up.
2. MIRU workover unit. Record casing and tubing pressures.
3. Bleed pressure off of well.
4. NU BOP.
5. TOOH with tubing:
 - 85 Jts of 2-3/8" IPC tubing
6. PU work string and TIH to tag top of cement plug at ~2750'. TOOH with work string.
7. TIH with packer and set 10' above top of cement plug and pressure test plug to 500 PSI.
8. Release packer and establish circulation with work string and brine fluid to load the hole.
9. TOOH with workstring and LD packer.
10. PU and TIH with 4", 10.47#, L-80, Ultra Flush Joint Casing and lightly tag TOC @ 2750'.
11. After tagging TOC pull up 5' to set end of casing at 2745'.
12. Establish circulation with brine fluid.
13. Rig up cement company (make sure that cement company has maximum amount of available cement in hopper before pumping job). This job will require a minimum of 342 sx.
14. Pump Class "C" cement until circulation is obtained and then displace with wiper plug and brine water (estimated volume to establish circulation is 452 cu. ft or 81 bbls). Shut BH valve prior to bumping plug.

Contact Information:

David Gonzales – Asset Engineer
Cell – 832-350-6334
Office – 281-840-4055

Joe Hernandez - Foreman
Cell – 575-942-9492

15. ND BOP
16. Set slips for 4" casing.
17. Install bowl for 2-3/8" injection tubing.
18. NU BOP.
19. WOC.
20. PU bit and workstring and drill out cement and composite plug @ ~2750 and push composite plug to bottom @ ~ 3257'.
21. Bleed well pressure down or kill well as necessary.
22. LD bit and workstring.
23. PU 1 jts of 2-3/8" IPC tail pipe, 4" injection packer (Arrowset with on off tool), ~87 Jts of 2-3/8" IPC injection tubing, and TIH with packer landed at 2740' (unset).
24. ND BOP.
25. Circulate packer fluid.
26. Set packer at 2740'.
27. NU WH.
28. Conduct mock MIT to 500 PSI.
29. Notify foreman that the well is ready for a witnessed MIT.
30. RDMO.

Contact Information:

David Gonzales – Asset Engineer
Cell – 832-350-6334
Office – 281-840-4055

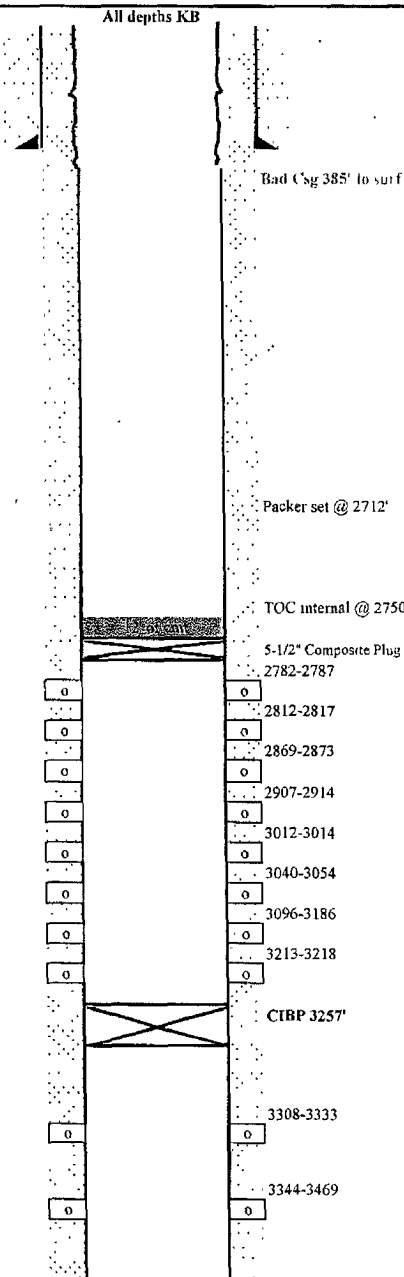
Joe Hernandez - Foreman
Cell – 575-942-9492

Well Name: Hudson Federal 6
 Location: 18-17S-31E 2310 FNL 990 FEL
Eddy County, NM
 API #: 30-015-26008
 Elevations 3951' GROUND: 3699'
 Depths (KB) 3709' KB: 3907'
 PBTD: 3503'
 TD: 3505'

Wellbore Schematic

Date Prepared
 Last Updated: 8/26/11
 Spud Date: 11/23/88
 RR Date:
 Spud Date to RR Date:
 Completion Start Date:
 Completion End Date:
 Completion Total Days: -32470 Days
 Co-ordinates:

Surf Csg
 8 5/8" Csg
 Set @ 373'
 Cmt w/ 275 sx
 TOC @ surf



Bad Csg 385' to surf

Packer set @ 2712'

TOC internal @ 2750'

5-1/2" Composite Plug @ 2762'

2782-2787

2812-2817

2869-2873

2907-2914

3012-3014

3040-3054

3096-3186

3213-3218

CTBP 3257'

3308-3333

3344-3469

Production Csg
 5 1/2"
 Set @ 3505'
 Cmt w/ 1700 sx
 TOC @ surf

TD @ 3505'

Surface Casing:
 8 5/8" Csg set @ 373' cemented w/275sx cl "C" to surf

Production Casing
 5 1/2", 17#, Csg set @ 3505' cemented w/1700sx cl "C" to surf

Tubing	Length (ft)
2711' 4 5/8" J-55 FUE Bnd tbg	

Notes:
 8/5/11 - Set 5-1/2" Composite bridge plug @ 2762' Dump bailed 12' of cmt on top of composite
 8/4/11 - Casing failed to hold psi from 385' to surface on 5-1/2" string.

Perforations:

12/6/1988
 2782-3055
 3096-3217
 3344-3469

2/17/1997
 3308-3333

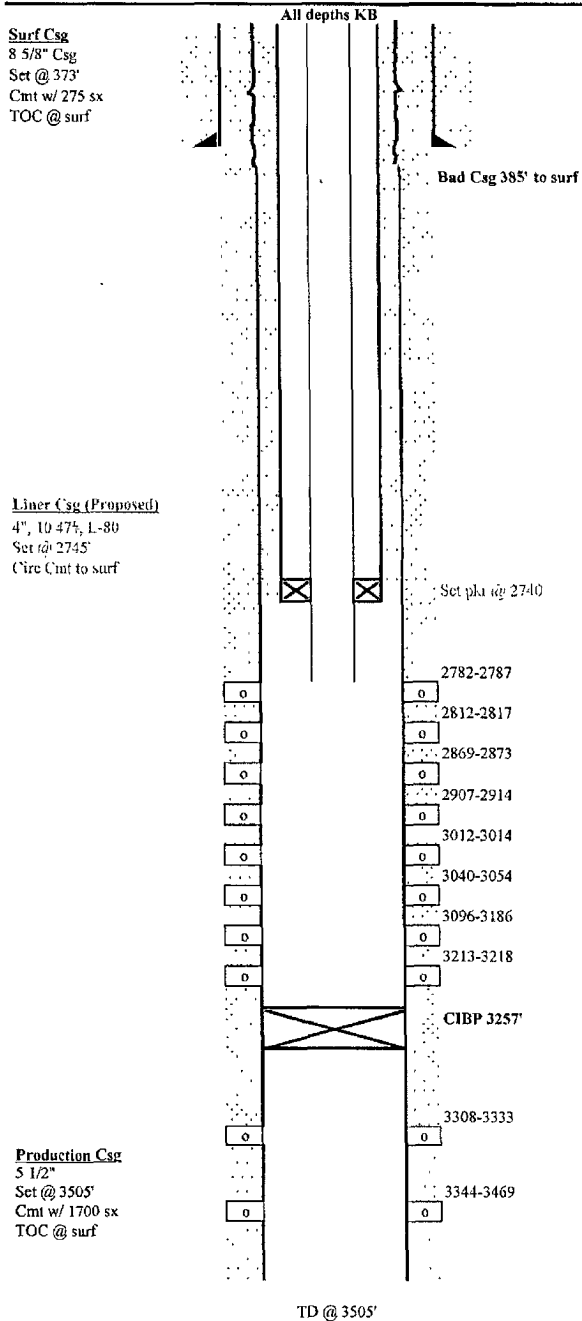
2/16/1999
 2788-2787
 2812-2817
 2869-2873
 2907-2914
 3012-3014
 3040-3054
 3180-3186
 3213-3218

Well Name: Hudson Federal 6
 Location: 18-17S-31E 2310 FNL 990 FEL
 Eddy County, NM
 API #: 30-015-26008

Elevations: 3951' GROUND: 3699'
 KB: 3907'
 Depths (KB): 3709' PBTD: 3503'
 TD: 3505'

Wellbore Schematic

Date Prepared:
 Last Updated: 9/29/11
 Spud Date: 11/23/88
 RR Date:
 Spud Date to RR Date:
 Completion Start Date:
 Completion End Date:
 Completion Total Days:
 Co-ordinates



Surface Casing	
8 5/8" Csg set @ 373' cemented w/275sx cl "C" to surf	
Production Casing	
5 1/2", 17#, Csg set @ 3505' cemented w/1700sx cl "C" to surf	
Proposed Tubing	
	Length (ft)
87 Jts of 2-3/8" IPC	2740
Arrowset Packer with On Off Tool	4
1 Jt of 2-3/8" IPC Tail Pipe	31
Perforations:	
12/6/1988	
2782-3055	
3096-3217	
3344-3469	
2/17/1997	
3308-3333	
2/16/1999	
2788-2787	
2812-2817	
2869-2873	
2907-2914	
3012-3014	
3040-3054	
3180-3186	
3213-3218	