

DISTRICT I
1625 N. French Dr., Hobbs, NM 88240

DISTRICT II
1301 W. Grand Avenue, Artesia, NM 88210

DISTRICT III
1000 Rio Brazos Rd., Aztec, NM 87410

DISTRICT IV
1220 S. St. Francis Dr., Santa Fe, NM 87505

State of New Mexico
Energy, Minerals and Natural Resources Department

Form C-102
Revised October 15, 2009

Submit one copy to appropriate
District Office

OIL CONSERVATION DIVISION

1220 South St. Francis Dr.
Santa Fe, New Mexico 87505

WELL LOCATION AND ACREAGE DEDICATION PLAT

☐ AMENDED REPORT

API Number 30-015-38596	Pool Code 96210	Pool Name Empire Gloria - 1/ES0
Property Code 34762	Property Name CARRINGTON STATE	Well Number 4
OGRID No. 155615	Operator Name NADEL & GUSSMAN PERMIAN	Elevation 3719'

Surface Location

UL or lot No. 0	Section 12	Township 17 S	Range 28 E	Lot Idn	Feet from the 330	North/South line SOUTH	Feet from the 1650	East/West line EAST	County EDDY
--------------------	---------------	------------------	---------------	---------	----------------------	---------------------------	-----------------------	------------------------	----------------

Bottom Hole Location If Different From Surface

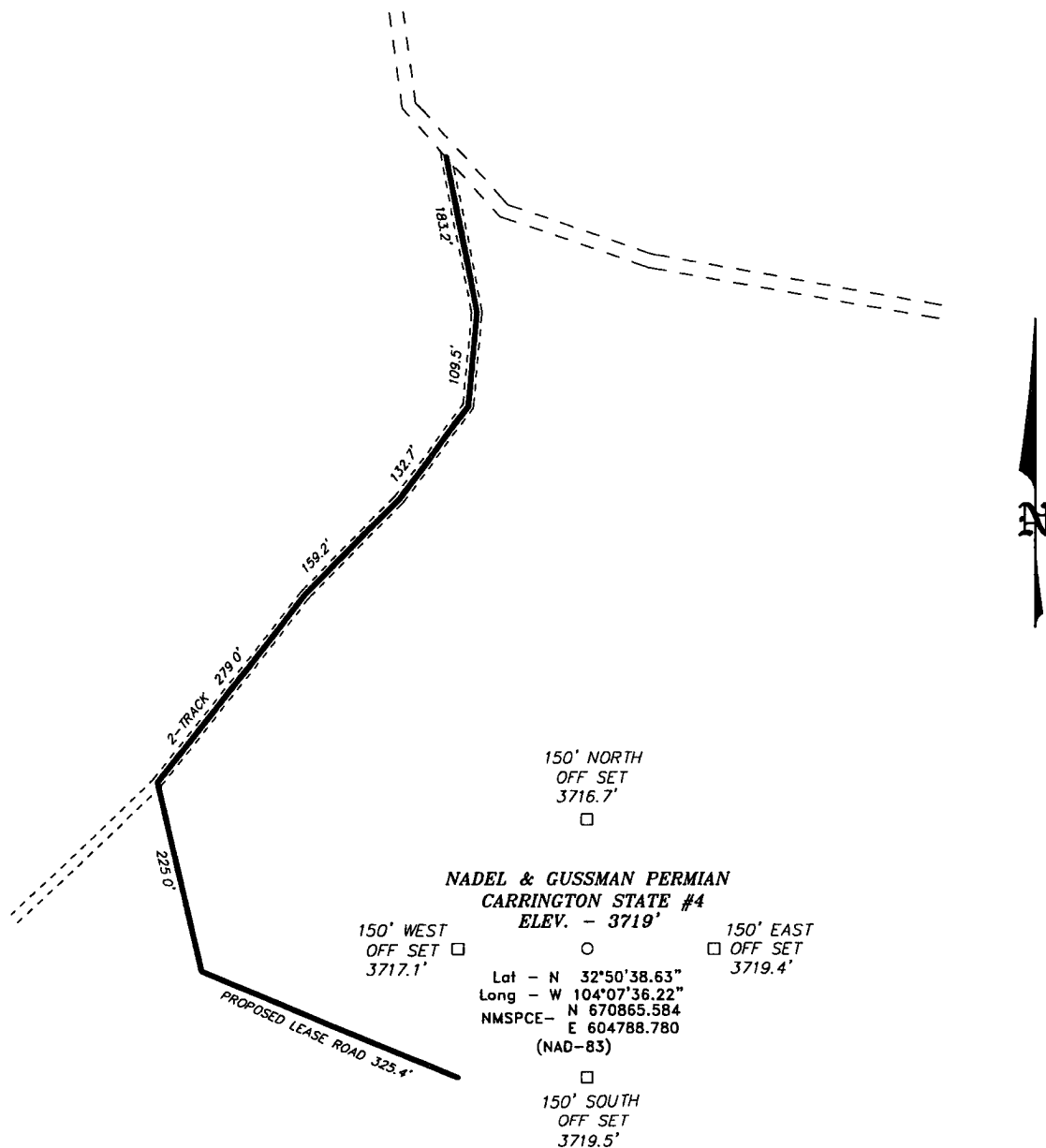
UL or lot No.	Section	Township	Range	Lot Idn	Feet from the	North/South line	Feet from the	East/West line	County
---------------	---------	----------	-------	---------	---------------	------------------	---------------	----------------	--------

Dedicated Acres 40.00	Joint or Infill	Consolidation Code	Order No.
--------------------------	-----------------	--------------------	-----------

NO ALLOWABLE WILL BE ASSIGNED TO THIS COMPLETION UNTIL ALL INTERESTS HAVE BEEN CONSOLIDATED
OR A NON-STANDARD UNIT HAS BEEN APPROVED BY THE DIVISION

<div><p>RECEIVED SEP 14 2011 NMOCD ARTESIA</p><p>SURFACE LOCATION Lat - N 32°50'38.63" Long - W 104°07'36.22" NMSPC- N 670865.584 E 604788.780 (NAD-83)</p><p>330' 1650'</p></div>	<p>OPERATOR CERTIFICATION</p> <p>I hereby certify that the information contained herein is true and complete to the best of my knowledge and belief, and that this organization either owns a working interest or unleased mineral interest in the land including the proposed bottom hole location or has a right to drill this well at this location pursuant to a contract with an owner of such a mineral or working interest, or to a voluntary pooling agreement or a compulsory pooling order heretofore entered by the division.</p> <p><i>Chris Marquez</i> 3-2-11 Signature Date</p> <p>Chris Marquez Printed Name</p> <p>SURVEYOR CERTIFICATION</p> <p>I hereby certify that the well location shown on this plat was plotted from field notes of actual surveys made by me or under my supervision and that the same is true and correct to the best of my belief.</p> <p>FEBRUARY 24 2011 Date Surveyed</p> <p><i>Gary L. Jones</i> Signature & Seal of Professional Surveyor</p> <p>Certificate No. Gary L. Jones 7977</p> <p>BASIN SURVEYS 24200</p>
--	--

SECTION 12, TOWNSHIP 17 SOUTH, RANGE 28 EAST, N.M.P.M.,
EDDY COUNTY, NEW MEXICO.



Directions to Location:

FROM THE JUNCTION OF HWY 82 AND CO. RD. OLD LOCO, GO NORTH ON OLD LOCO 2.9 MILES TO LEASE ROAD, ON LEASE ROAD GO WESTERLY 1.4 MILES TO A "Y", GO SOUTHERLY 0.6 MILES TO PROPOSED LEASE ROAD.

200 0 200 400 FEET
SCALE: 1" = 200'

NADEL & GUSSMAN PERMIAN

REF: CARRINGTON STATE #4 / WELL PAD TOPO

THE CARRINGTON STATE #4 LOCATED 330'

FROM THE SOUTH LINE AND 1650' FROM THE EAST LINE OF

SECTION 12, TOWNSHIP 17 SOUTH, RANGE 28 EAST,

N.M.P.M., EDDY COUNTY, NEW MEXICO.

BASIN SURVEYS P.O. BOX 1786 - HOBBS, NEW MEXICO

W.O. Number: 24200

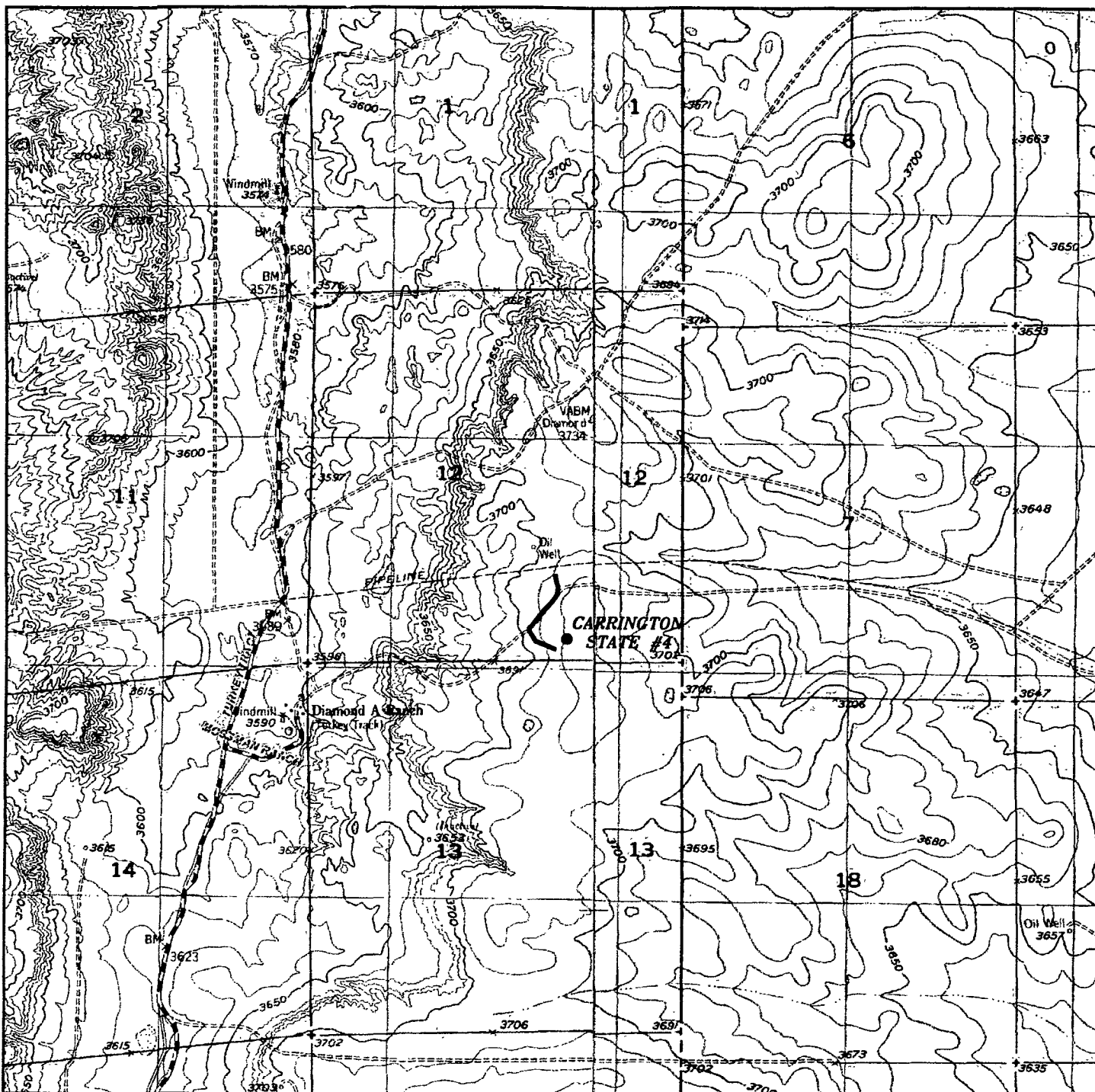
Drawn By: J. SMALL

Date: 02-24-2011

Disk: JMS 24200

Survey Date: 02-23-2011

Sheet 1 of 1 Sheets



CARRINGTON STATE #4

Located 330' FSL and 1650' FEL
 Section 12, Township 17 South, Range 28 East,
 N.M.P.M., Eddy County, New Mexico.

basin
surveys
 focused on excellence
 in the oilfield

P.O. Box 1786
 1120 N. West County Rd.
 Hobbs, New Mexico 88241
 (575) 393-7316 - Office
 (575) 392-2206 - Fax
 basinsurveys.com

W.O. Number: JMS 24200

Survey Date: 02-23-2011

Scale: 1" = 2000'

Date: 02-24-2011

**NADEL &
 GUSSMAN
 PERMIAN**

NADEL &
GUSSMAN
PERMIAN