

District I

1625 N. French Dr., Hobbs, NM 88240

District II

1301 W. Grand Avenue, Artesia, NM 88210

District III

1000 Rio Brazos Rd., Aztec, NM 87410

District IV

1220 S. St. Francis Dr., Santa Fe, NM 87505

State of New Mexico
Energy, Minerals & Natural Resources Department
OIL CONSERVATION DIVISION
1220 South St. Francis Dr.
Santa Fe, NM 87505

Form C-102

Revised October 15, 2009

Submit one copy to appropriate

District Office

☐ AMENDED REPORT

WELL LOCATION AND ACREAGE DEDICATION PLAT

¹ API Number 30-015-38610	² Pool Code	³ Pool Name POKER LAKE EAST; DELAWARE
⁴ Property Code 300635	⁵ Property Name COTTON DRAW UNIT	⁶ Well Number ✓ 151 #
⁷ OGRID No. 6137 ✓	⁸ Operator Name DEVON ENERGY PRODUCTION COMPANY, L.P.	⁹ Elevation 3500.9

¹⁰ Surface Location

UL or lot no.	Section	Township	Range	Lot Idn	Feet from the	North/South line	Feet from the	East/West line	County
D	35	24S	31 E		200	NORTH	660	WEST	EDDY

¹¹ Bottom Hole Location If Different From Surface

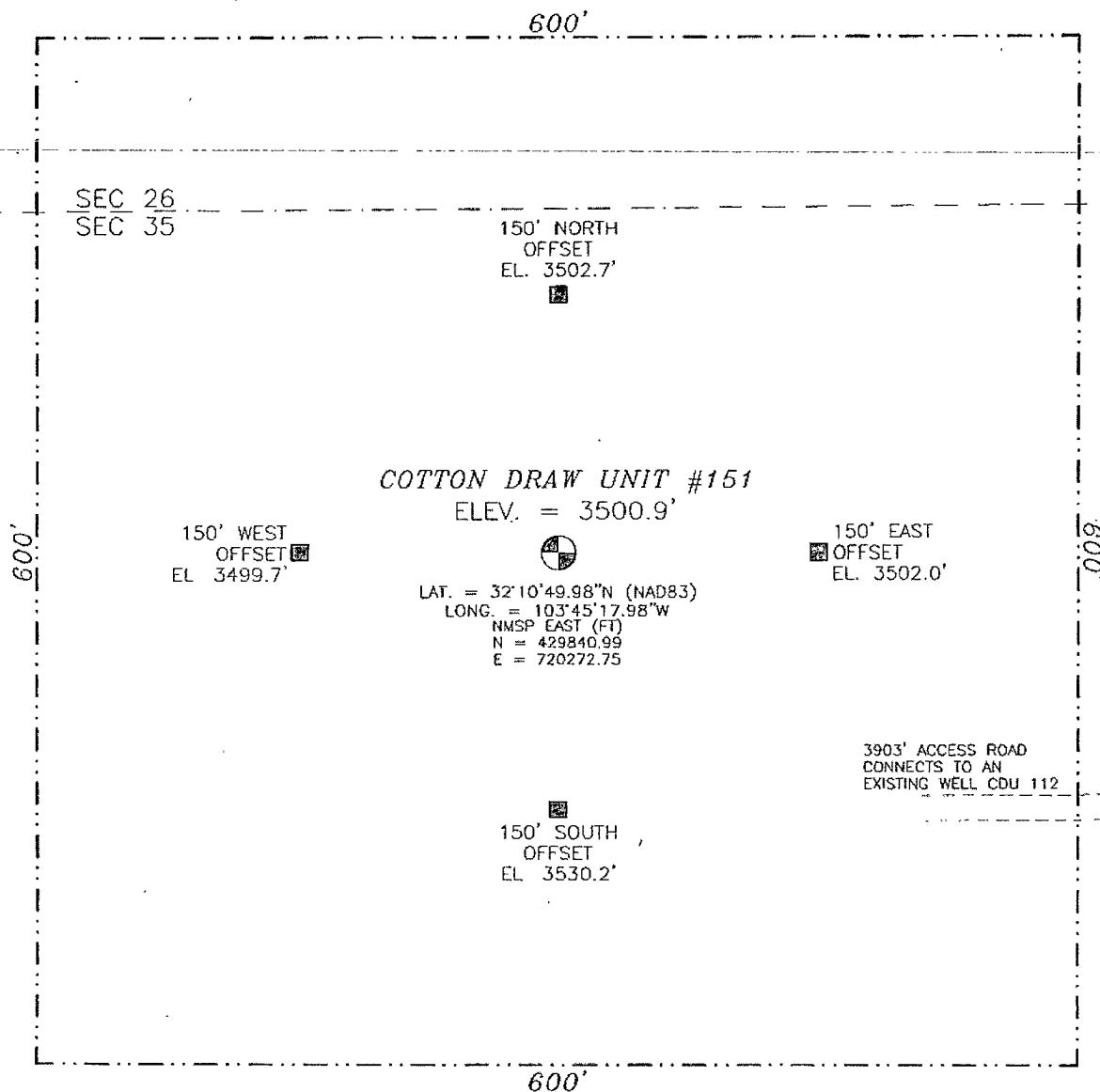
UL or lot no.	Section	Township	Range	Lot Idn	Feet from the	North/South line	Feet from the	East/West line	County
M	35	24 S	31 E		313	SOUTH	747	WEST	EDDY

¹² Dedicated Acres 160	¹³ Joint or Infill	¹⁴ Consolidation Code	¹⁵ Order No.
---	-------------------------------	----------------------------------	-------------------------

No allowable will be assigned to this completion until all interests have been consolidated or a non-standard unit has been approved by the division.

<p>COTTON DRAW UNIT #151 ELEV. = 3500.9' LAT. = 32°10'49.98"N (NAD83) LONG. = 103°45'17.98"W NMSP EAST (FT) N = 429840.99 E = 720272.75</p> <p>SURFACE LOCATION PP: 249 FNL & 680 FWL NW CORNER SEC. 35 LAT. = 32°10'51.95"N LONG. = 103°45'25.66"W NMSP EAST (FT) N = 430036.93 E = 719612.25</p> <p>SW CORNER SEC. 35 LAT. = 32°10'00.38"N LONG. = 103°45'25.88"W NMSP EAST (FT) N = 424824.54 E = 719621.10</p> <p>BOTTOM OF HOLE LAT. = 32°10'02.32"N LONG. = 103°45'18.19"W NMSP EAST (FT) N = 425024.11 E = 720280.89</p> <p>SE CORNER SEC. 35 LAT. = 32°10'00.07"N LONG. = 103°44'24.35"W NMSP EAST (FT) N = 424821.55 E = 724911.12</p>	<p>17 OPERATOR CERTIFICATION I hereby certify that the information contained herein is true and complete to the best of my knowledge and belief, and that this organization either owns a working interest or unleased mineral interest in the land including the proposed bottom hole location or has a right to drill this well at this location pursuant to a contract with an owner of such a mineral or working interest, or to a voluntary pooling agreement or a compulsory pooling order heretofore entered by the division.</p> <p>Signature: <i>Judy A. Barnett</i> Date: 9/22/11 Printed Name: Judy A. Barnett Regulatory Specialist</p> <p>18 SURVEYOR CERTIFICATION I hereby certify that the well location shown on this plat was plotted from field notes of actual surveys made by me or under my supervision, and that the same is true and correct to the best of my belief. SEPTEMBER 30, 2010 Date of Survey: 12/9/07 Signature and Seal of Professional Surveyor: <i>[Signature]</i> Certificate Number: 12100-11 SARAMILLO, PLS 12797 SURVEY NO 230</p>
--	---

SECTION 35, TOWNSHIP 24 SOUTH, RANGE 31 EAST, N.M.P.M.
EDDY COUNTY, STATE OF NEW MEXICO



010 50 100 200

SCALE 1" = 100'

DIRECTIONS TO LOCATION

FROM CR. #798 (BUCK JACKSON) AND CR. #791 (BUCK THORN) GO SOUTH ON CR. #791 3.1 MILES TURN LEFT AND GO EAST 1.9 MILES TURN LEFT AND GO NORTH 0.7 MILES TURN LEFT AND GO WEST 0.3 MILES TURN RIGHT AND GO NORTH 0.4 MILES TURN RIGHT AND GO EAST 0.7 MILES TURN LEFT AND GO NORTH 0.8 MILES TURN LEFT AND GO WEST 0.4 MILES TO EXISTING CDU #112 WELL AND FROM THE SOUTHWEST PAD CORNER FOLLOW PROPOSED ROAD SURVEY NW. 562' BEND LEFT AND FOLLOW FLAGS WEST 3550' AND LOCATION IS 150' NORTH

DEVON ENERGY PRODUCTION COMPANY, L.P.
COTTON DRAW UNIT #151

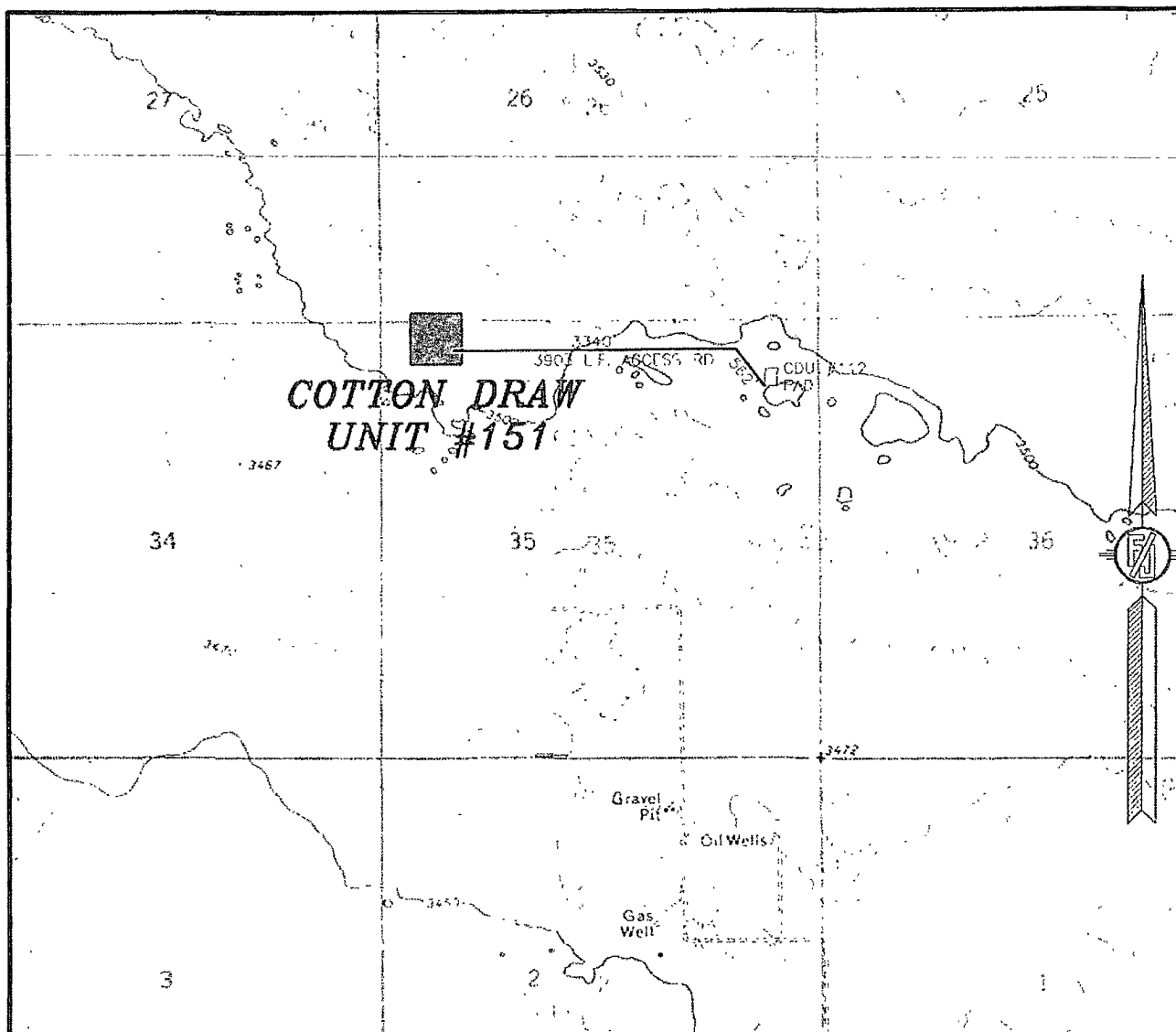
LOCATED 200 FT. FROM THE NORTH LINE
AND 660 FT. FROM THE WEST LINE OF
SECTION 35, TOWNSHIP 24 SOUTH,
RANGE 31 EAST, N.M.P.M.
EDDY COUNTY, STATE OF NEW MEXICO

SEPTEMBER 30, 2010

SURVEY NO. 230

MADRON SURVEYING, INC. 351 SOUTH CANA CARLSBAD, NEW MEXICO
(575) 587-5830

SECTION 35, TOWNSHIP 24 SOUTH, RANGE 31 EAST, N.M.P.M.
EDDY COUNTY, STATE OF NEW MEXICO
LOCATION VERIFICATION MAP



CONTOUR INTERVAL:
BIG SINKS
PADUCA BREAKS

NOT TO SCALE

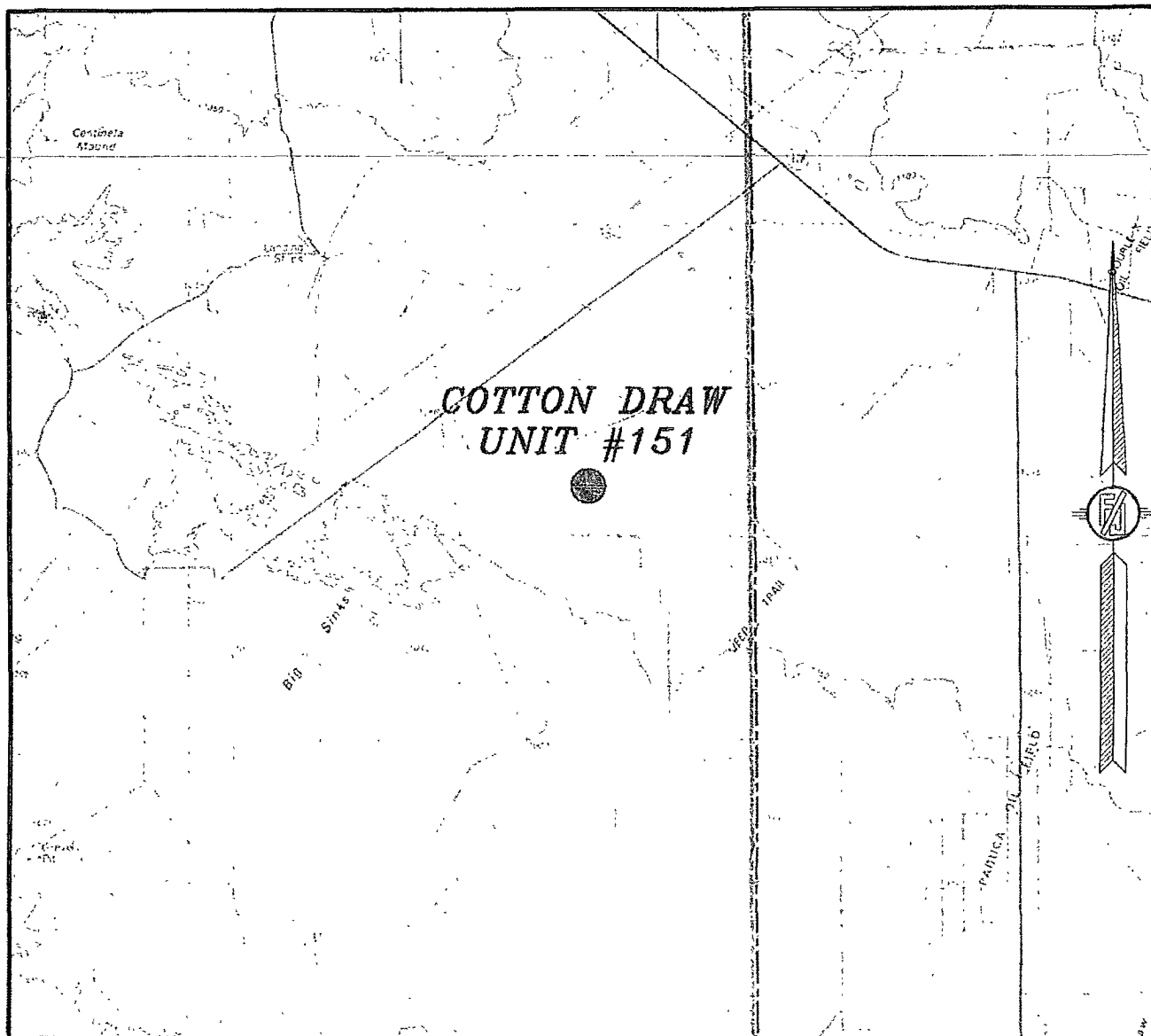
DEVON ENERGY PRODUCTION COMPANY, L.P.
COTTON DRAW UNIT #151
LOCATED 200 FT. FROM THE NORTH LINE
AND 660 FT. FROM THE WEST LINE OF
SECTION 35, TOWNSHIP 24 SOUTH,
RANGE 31 EAST, N.M.P.M.
EDDY COUNTY, STATE OF NEW MEXICO

SEPTEMBER 30, 2010

SURVEY NO. 230

MADRON SURVEYING, INC. 301 SOUTH CANAL CARLSBAD, NEW MEXICO
(505) 987-5330

SECTION 35, TOWNSHIP 24 SOUTH, RANGE 31 EAST, N.M.P.M.
EDDY COUNTY, STATE OF NEW MEXICO
VICINITY MAP



NOT TO SCALE

DEVON ENERGY PRODUCTION COMPANY, L.P.
COTTON DRAW UNIT #151
LOCATED 200 FT. FROM THE NORTH LINE
AND 660 FT. FROM THE WEST LINE OF
SECTION 35, TOWNSHIP 24 SOUTH,
RANGE 31 EAST, N.M.P.M.
EDDY COUNTY, STATE OF NEW MEXICO

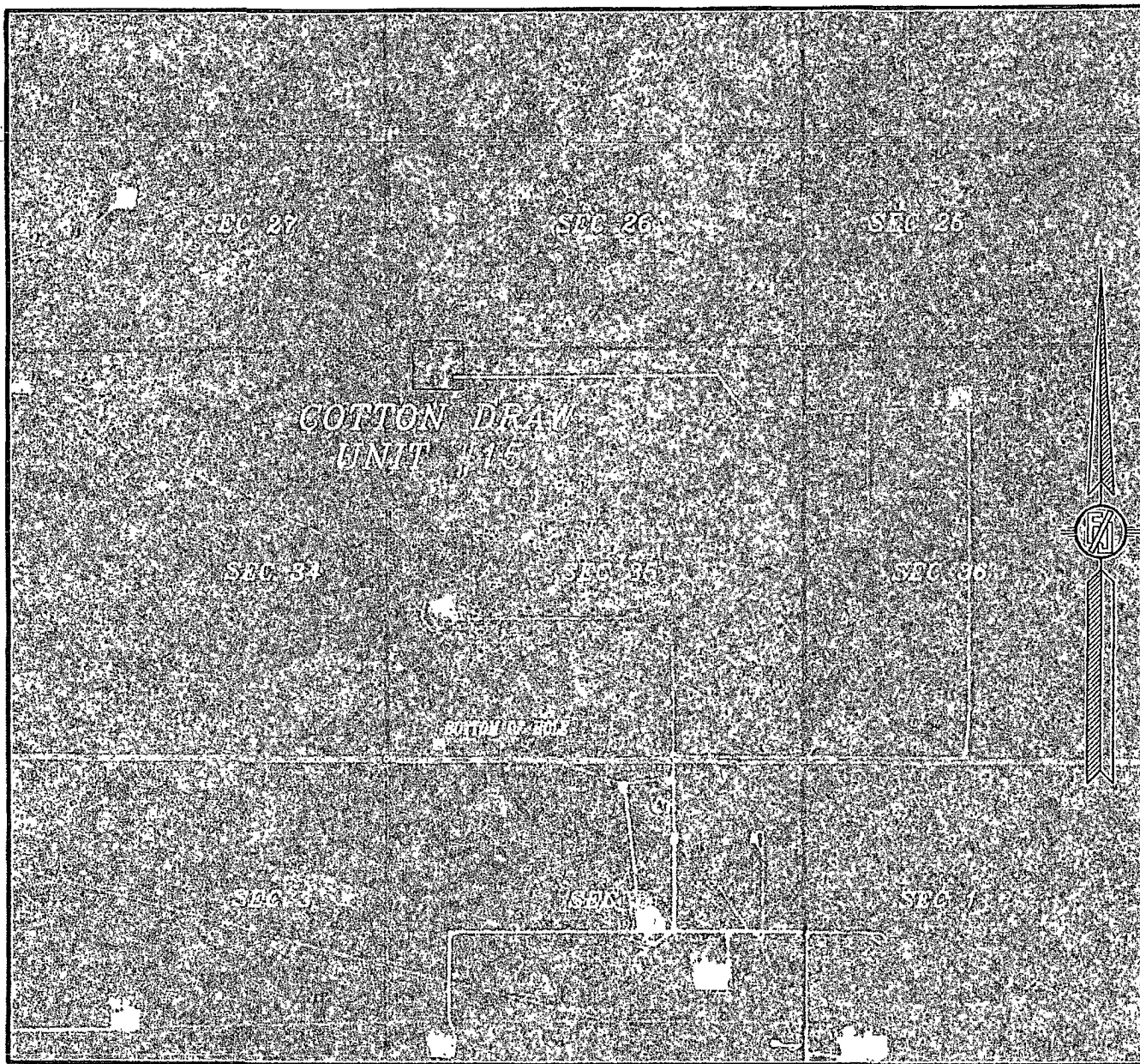
SEPTEMBER 30, 2010

SURVEY NO. 230

MADRON SURVEYING, INC. 501 SOUTH CANAL (575) 887-5830 CARLSBAD, NEW MEXICO

SECTION 35, TOWNSHIP 24 SOUTH, RANGE 31 EAST, N.M.P.M.
EDDY COUNTY, STATE OF NEW MEXICO

AERIAL PHOTO



NOT TO SCALE
AERIAL PHOTO:
GOOGLE EARTH
USDA - AUG, 2009

DEVON ENERGY PRODUCTION COMPANY, L.P.

COTTON DRAW UNIT #151

LOCATED 200 FT. FROM THE NORTH LINE
AND 660 FT. FROM THE WEST LINE OF
SECTION 35, TOWNSHIP 24 SOUTH,
RANGE 31 EAST, N.M.P.M.
EDDY COUNTY, STATE OF NEW MEXICO

SEPTEMBER 30, 2010

SURVEY NO. 230

MADRON SURVEYING, INC. 501 SOUTH CANN (575) 697-5835 CARLSBAD, NEW MEXICO