


Submit To Appropriate District Office Two Copies District I 1625 N French Dr., Hobbs, NM 88240 District II 1301 W Grand Avenue, Artesia, NM 88210 District III 1000 Rio Brazos Rd., Aztec, NM 87410 District IV 1220 S St Francis Dr., Santa Fe, NM 87505	<b>State of New Mexico</b> <b>Energy, Minerals and Natural Resources</b>  <b>Oil Conservation Division</b> <b>1220 South St. Francis Dr.</b> <b>Santa Fe, NM 87505</b>	<b>Form C-105</b> July 17, 2008								
		1. WELL API NO. 30-015-39200								
		2. Type of Lease <input checked="" type="checkbox"/> STATE <input type="checkbox"/> FEE <input type="checkbox"/> FED/INDIAN								
		3. State Oil & Gas Lease No								
<b>WELL COMPLETION OR RECOMPLETION REPORT AND LOG</b>										
4 Reason for filing: <input checked="" type="checkbox"/> <b>COMPLETION REPORT</b> (Fill in boxes #1 through #31 for State and Fee wells only)  <input type="checkbox"/> <b>C-144 CLOSURE ATTACHMENT</b> (Fill in boxes #1 through #9, #15 Date Rig Released and #32 and/or #33, attach this and the plat to the C-144 closure report in accordance with 19 15 17.13 K NMAC)		5. Lease Name or Unit Agreement Name Yale State								
		6. Well Number 011								
7. Type of Completion: <input checked="" type="checkbox"/> NEW WELL <input type="checkbox"/> WORKOVER <input type="checkbox"/> DEEPENING <input type="checkbox"/> PLUGBACK <input type="checkbox"/> DIFFERENT RESERVOIR <input type="checkbox"/> OTHER										
8 Name of Operator COG OPERATING LLC		9. OGRID 229137								
10 Address of Operator 550 West Texas Ave Suite 100, Midland, Texas 79701		11 Pool name or Wildcat MAR LOCO, GLORIETA-YESO, 97866								
12. Location	Unit Ltr	Section	Township	Range	Lot	Feet from the	N/S Line	Feet from the	E/W Line	County
Surface:	N	2	17S	30E		990	South	1650	West	Eddy
BH:										
13. Date Spudded 8/1/11	14 Date T.D. Reached 8/8/11	15 Date Rig Released 8/10/11		16 Date Completed (Ready to Produce) 9/6/11		17 Elevations (DF and RKB, RT, GR, etc.) 3742' GR				
18. Total Measured Depth of Well 6080		19. Plug Back Measured Depth 6020		20 Was Directional Survey Made? No		21. Type Electric and Other Logs Run CN / HNGS, Micro CFL / HNGS				
22 Producing Interval(s), of this completion - Top, Bottom, Name Yeso										
<b>23 CASING RECORD (Report all strings set in well)</b>										
CASING SIZE		WEIGHT LB./FT.		DEPTH SET		HOLE SIZE		CEMENTING RECORD		AMOUNT PULLED
13-3/8		48		474		17-1/2		1000sx		
8-5/8		24		1366		11		500sx		
5-1/2		17		6065		7-7/8		1150sx		
<b>24. LINER RECORD</b>										
SIZE		TOP		BOTTOM		SACKS CEMENT		SCREEN		
<b>25 TUBING RECORD</b>										
SIZE		DEPTH SET		PACKER SET						
2-7/8		5556								
26 Perforation record (interval, size, and number)						27. ACID, SHOT, FRACTURE, CEMENT, SQUEEZE, ETC.				
4615 - 4865 1 SPF, 26 holes OPEN						DEPTH INTERVAL				
4975 - 5200 1 SPF, 26 holes OPEN						AMOUNT AND KIND MATERIAL USED				
5260 - 5510 1 SPF, 26 holes OPEN						4615 - 4865 See Attachment				
5570 - 5820 1 SPF, 26 holes OPEN						4975 - 5200 See Attachment				
						5260 - 5510 See Attachment				
						5570 - 5820 See Attachment				
<b>28 PRODUCTION</b>										
Date First Production 10/1/11		Production Method ( <i>Flowing, gas lift, pumping - Size and type pump</i> ) Pumping, 2-1/2" x 2" x 24' RHBC pump				Well Status ( <i>Prod. or Shut-in</i> ) Producing				
Date of Test 10/1/11	Hours Tested 24	Choke Size	Prod'n For Test Period	Oil - Bbl 56	Gas - MCF 96	Water - Bbl 90	Gas - Oil Ratio 1643			
Flow Tubing Press	Casing Pressure	Calculated 24-Hour Rate	Oil - Bbl.	Gas - MCF	Water - Bbl	Oil Gravity - API - ( <i>Corr</i> ) 37.4				
29 Disposition of Gas ( <i>Sold, used for fuel, vented, etc</i> ) Sold							30 Test Witnessed By Kent Greenway			
31 List Attachments Logs, C102, C103, Deviation Report, C104										
32 If a temporary pit was used at the well, attach a plat with the location of the temporary pit										
33 If an on-site burial was used at the well, report the exact location of the on-site burial										
Latitude			Longitude			NAD 1927 1983				
<i>I hereby certify that the information shown on both sides of this form is true and complete to the best of my knowledge and belief</i>										
Signature 		Printed Name Chasity Jackson		Title Regulatory Analyst			Date 10/3/11			
E-mail Address    cjackson@concho.com										



**Yale State #11**  
**API#: 30-015-39200**  
**EDDY, NM**

**C-105 (#27) ADDITIONAL INFORMATION**

27. ACID, SHOT, FRACTURE, CEMENT, SQUEEZE, ETC.	
DEPTH INTERVAL	AMOUNT AND KIND MATERIAL USED
4615 - 4865	Acidized w/3,100 gals 15% HCL.
	Frac w/115,613 gals gel, 138,389# 16/30 white sand, 17,000# 16/30 CRC.

27. ACID, SHOT, FRACTURE, CEMENT, SQUEEZE, ETC.	
DEPTH INTERVAL	AMOUNT AND KIND MATERIAL USED
4975 - 5200	Acidized w/3,500 gals 15% HCL.
	Frac w/114,319 gals gel, 141,861# 16/30 white sand, 38,076# 16/30 CRC.

27. ACID, SHOT, FRACTURE, CEMENT, SQUEEZE, ETC.	
DEPTH INTERVAL	AMOUNT AND KIND MATERIAL USED
5260 - 5510	Acidized w/4,182 gals 15% HCL.
	Frac w/115,120 gals gel, 144,344# 16/30 white sand, 34,616# 16/30 Siberprop.

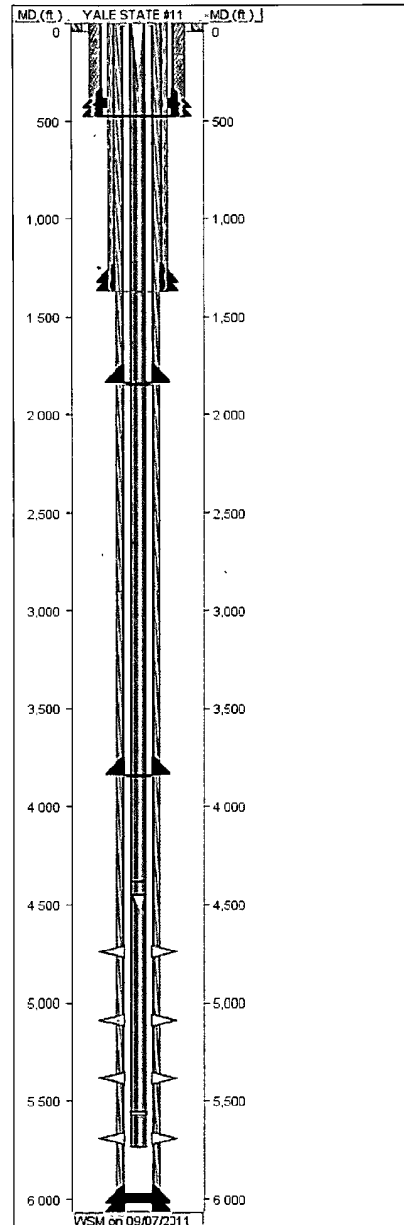
27. ACID, SHOT, FRACTURE, CEMENT, SQUEEZE, ETC.	
DEPTH INTERVAL	AMOUNT AND KIND MATERIAL USED
5570 - 5820	Acidized w/3,513 gals 15% HCL.
	Frac w/99,357 gals gel, 145,875# 16/30 white sand, 34,747# 16/30 CRC.

Well ID: 30-015-39200

Well Name: YALE STATE #11

Event#: 2.00

Report Dates: 09/07/2011



**PIPE SPECIFICATION**

STRING NAME	SECTION NAME	JOINT COUNT	START DEPTH	END DEPTH	LENGTH	OD SIZE	ID SIZE	WT GRDNT	GRD	CONN
SURFACE	GUIDE SHOE		473.00	474.00	1.00	13 38				
SURFACE	CASING	1	428.81	473.00	44 19	13.38	12.71	48.0	H-40	STC
SURFACE	FLOAT COLLAR		428.81	428.81	0.00					
SURFACE	CASING	10	-2.91	428.81	431.72	13.38	12.71	48.0	H-40	STC
PRODUCTION	FLOAT SHOE		6063.20	6065.00	1.80					
PRODUCTION	CASING	1	6019.48	6063 20	43 72	5.50	4.89	17.0	J-55	LTC
PRODUCTION	FLOAT COLLAR		6017.98	6019 48	1.50					
PRODUCTION	CASING	49	3846.72	6017 98	2171.26	5.50	4.89	17.0	J-55	LTC
PRODUCTION	MARKER JOINT	1	3833.29	3846.72	13.43	5.50	4.89	17.0	J-55	LTC
PRODUCTION	EXTERNALLY	45	1850.78	3833.29	1982.51	5.50	4.89	17.0	L-80	LTC
PRODUCTION	MARKER JOINT	1	1833.33	1850.78	17.45	5.50	4.89	17.0	J-55	LTC
PRODUCTION	CASING	41	12.24	1833.33	1821.09	5.50	4.89	17.0	J-55	LTC
PRODUCTION	LANDING JOINT		-5.08	12 24	17.32					
TUBING	BULL PLUG		5736.50	5737.35	0.85	2.88	2.44	6.5	J55	8
TUBING	TUBING	1	5575.96	5736.50	160.54	2.88	2.44	6.5	J55	8
TUBING	DESANDER		5556.66	5575.96	19.30	2.88	2.44	6.5	J55	8
TUBING	SEAT NIPPLE		5555.56	5556.66	1.10	2.88	2.44	6.5	J55	8
TUBING	TUBING	1	4449.36	5555.56	1106.20	2 88	2.44	6.5	J55	8
TUBING	TUBING ANCHOR		4446.51	4449.36	2.85	2.88	2.44	6.5	J55	8
TUBING	TUBING	1	4381.56	4446.51	64.95	2.88	2.44	6.5	J55	8
TUBING	MARKER JOINT		4379.44	4381.56	2.12	2.88	2 44	6.5	J55	8
TUBING	TUBING	1	0.00	4379.44	4379.44	2.88	2.44	6.5	J55	8
INTERMEDIATE	FLOAT SHOE		1364.20	1366.00	1.80					
INTERMEDIATE	CASING	1	1321.62	1364.20	42.58	8.63	8 10	24.0	J-55	STC
INTERMEDIATE	FLOAT COLLAR		1320.12	1321.62	1.50					
INTERMEDIATE	CASING	31	-3.65	1320.12	1323.77	8.63	8 10	24.0	J-55	STC

**CEMENTING**

STRING NAME	STAGE #	LEAD TOP (est) (ft)	LEAD TOP (ver) (ft)	TAIL TOP (est) (ft)	TAIL TOP (ver) (ft)
CONDUCTOR	1				
SURFACE	1		159.0		
SURFACE	2	0.0	159.0	0.0	159.0
PRODUCTION	1	0.0	0.0	2900.0	
INTERMEDIATE	1	0.0	0.0	0.0	0.0
INTERMEDIATE	2				

**BHA STRING**

DRILL EQUIP CODE	DESCRIPTION	LENGTH	OD SIZE	ID SIZE