

District I  
1625 N. French Dr., Hobbs, NM 88240  
District II  
1301 W. Grand Avenue, Artesia, NM 88210  
District III  
1000 Rio Brazos Rd., Aztec, NM 87410  
District IV  
1220 S. St. Francis Dr., Santa Fe, NM 87505

State of New Mexico  
Energy, Minerals & Natural Resources Department  
OIL CONSERVATION DIVISION  
1220 South St. Francis Dr.  
Santa Fe, NM 87505

Form C-402  
Revised October 12, 2005  
Submit to Appropriate District Office  
State Lease-4 Copies  
Fee Lease-3 Copies

☐ AMENDED REPORT

WELL LOCATION AND ACREAGE DEDICATION PLAT

API Number 30-015- <b>39648</b>	Pool Code 96473	Pool Name Pierce Crossing; Bone Spring, East
Property Code 38036	Property Name <b>ELK; WALLOW "11" STATE</b>	Well Number <b>9H</b>
OCRID No. 7377	Operator Name <b>EOG RESOURCES, INC.</b>	Elevation <b>3121.0'</b>

Surface Location

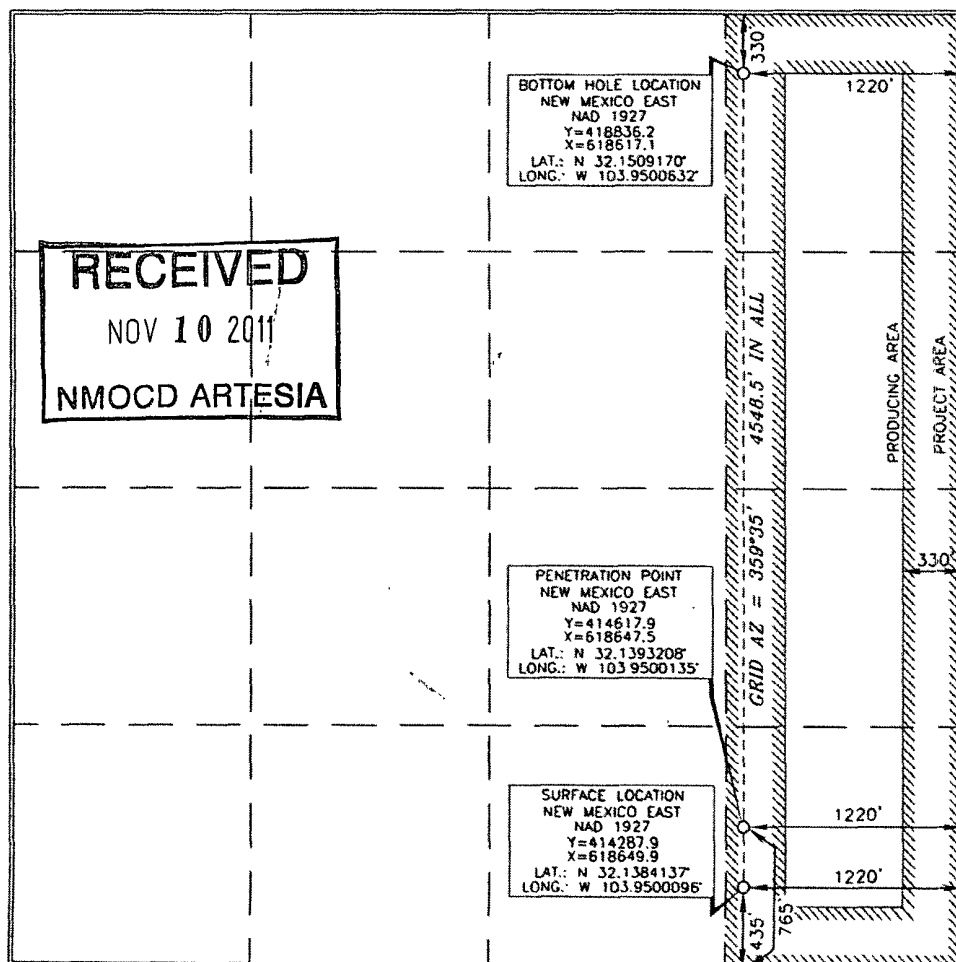
UL or lot no.	Section	Township	Range	Lot Idn	Feet from the	North/South line	Feet from the	East/West line	County
P	11	25 SOUTH	29 EAST, N.M.P.M.		435'	SOUTH	1220'	EAST	EDDY

Bottom Hole Location If Different From Surface

UL or lot no.	Section	Township	Range	Lot Idn	Feet from the	North/South line	Feet from the	East/West line	County
A	11	25 SOUTH	29 EAST, N.M.P.M.		330'	NORTH	1220'	EAST	EDDY

Dedicated Acres 160	Joint or Infill	Consolidation Code	Order No.
------------------------	-----------------	--------------------	-----------

No allowable will be assigned to this completion until all interests have been consolidated or a non-standard unit has been approved by the division.



OPERATOR CERTIFICATION

I hereby certify that the information contained herein is true and complete to the best of my knowledge and belief, and that this organization either owns a working interest or unleased mineral interest in the land including the proposed bottom hole location or has a right to drill this well at this location pursuant to a contract with an owner of such a mineral or working interest, or to a voluntary pooling agreement or a compulsory pooling order heretofore entered by the division.

*Stan Wagner* 11/7/11  
Signature Date

Stan Wagner  
Printed Name

SURVEYOR CERTIFICATION

I hereby certify that the well location shown on this plat was plotted from field notes of actual survey made by me or under my supervision and that the same is true and correct to the best of my belief.

15079  
SEPTEMBER 29, 2011  
Date of Survey

Signature and Seal of  
Professional Surveyor

*Terry J. Paul* 10/12/2011  
Certificate Number 15079

**Permit Information:**

Well Name: Elk Wallow 11 State No. 9H

**Location:**

SL: 435' FSL &amp; 1220' FEL, Section 11, T-25-S, R-29-E, Eddy Co., N.M.

BHL: 330' FNL &amp; 1220' FEL, Section 11, T-25-S, R-29-E, Eddy Co., N.M.

**Casing Program:**

Hole Size	Interval	Csg OD	Weight	Grade	Conn	DF <sub>min</sub> Collapse	DF <sub>min</sub> Burst	DF <sub>min</sub> Tension
17.5"	0 – 665'	13.375"	54.5#	J55	STC	1.125	1.25	1.60
12.25"	0-4000'	9.625"	40#	J55	LTC	1.125	1.25	1.60
12.25"	4000' – 4750'	9.625"	40#	HCK-55	LTC	1.125	1.25	1.60
8.75"	0' -12,223'	5.5"	17#	HCP-110	LTC	1.125	1.25	1.60

**Cement Program:**

Depth	No. Sacks	Wt. ppg	Yld Ft <sup>3</sup> /ft	Slurry Description
665'	600	14.8	1.32	Class C + 0.005 pps Static Free + 2% CaCl <sub>2</sub> + 0.25 pps CelloFlake + 0.005 gps FP-6L (TOC @ surface)
4,750' Stage Tool @ 3,000'	350	12.7	2.219	1 <sup>st</sup> Stage Lead: Class C + 2.0% SMS + 10.0% Salt + 1.10% R-3 + 0.005 pps Static Free + 0.25 pps Celloflake (TOC @ surface)
	200	14.8	1.34	1 <sup>st</sup> Stage Tail: Class C + 0.60% FL-62 + 0.45% CD-32 + 0.15% SMS + 0.30% R-3
	700	12.7	2.219	2 <sup>nd</sup> Stage Lead: Class C + 2.0% SMS + 10.0% Salt + 0.65% R-3 + 0.005 pps Static Free + 0.25 pps Celloflake
	100	14.8	1.34	2 <sup>nd</sup> Stage Tail: Class C + 0.60% FL-62 + 0.45% CD-32 + 0.15% SMS + 0.15% R-3 + 0.005 pps Static Free
BH Plug 8300' -8100'	75	18.0	0.90	Class H + 0.005 lbs/sx Static Free + 5% Salt + 1.2% CD31 + 0.005 gps FP-6L
KO Plug	250	18.0	0.90	Class H + 0.005 lbs/sx Static Free + 5% Salt + 1.2% CD31 + 0.005 gps FP-6L
12,223'	375	10.8	3.675	60:40:0 Class C + 15.0 pps BA-90 + 4% MPA-5 + 3.0% SMS + 5.0% A-10 + 1.0% BA-10A + 0.80% ASA-301 + 2.55% R-21 + 8.0 pps LCM-1
	300	11.8	2.38	50:50:10 Class H + 0.80% FL-52 + 0.30% ASA-301 + 0.40% SMS + 2.0% Salt + 0.30% R-21 + 3.0 pps LCM-1 + 0.25 pps Celloflake
	1200	14.2	1.277	50:50:2 Class H + 0.65% FL-52 + 0.45% CD-32 + 0.10% SMS + 2.0% Salt

**Mud Program:**

Depth	Type	Weight (ppg)	Viscosity	Water Loss
0 – 625'	Fresh - Gel	8.6-8.8	28-34	N/c
625' – 4,750'	Brine	10.0-10.2	28-34	N/c
4,750' – 8,300' Pilot Hole	Cut Brine	8.4-9.0	28-34	N/c
KOP – 12,223' Lateral	Cut Brine - XCD	9.0-9.5	40-42	8-10

Elk Wallow 11 State #9H

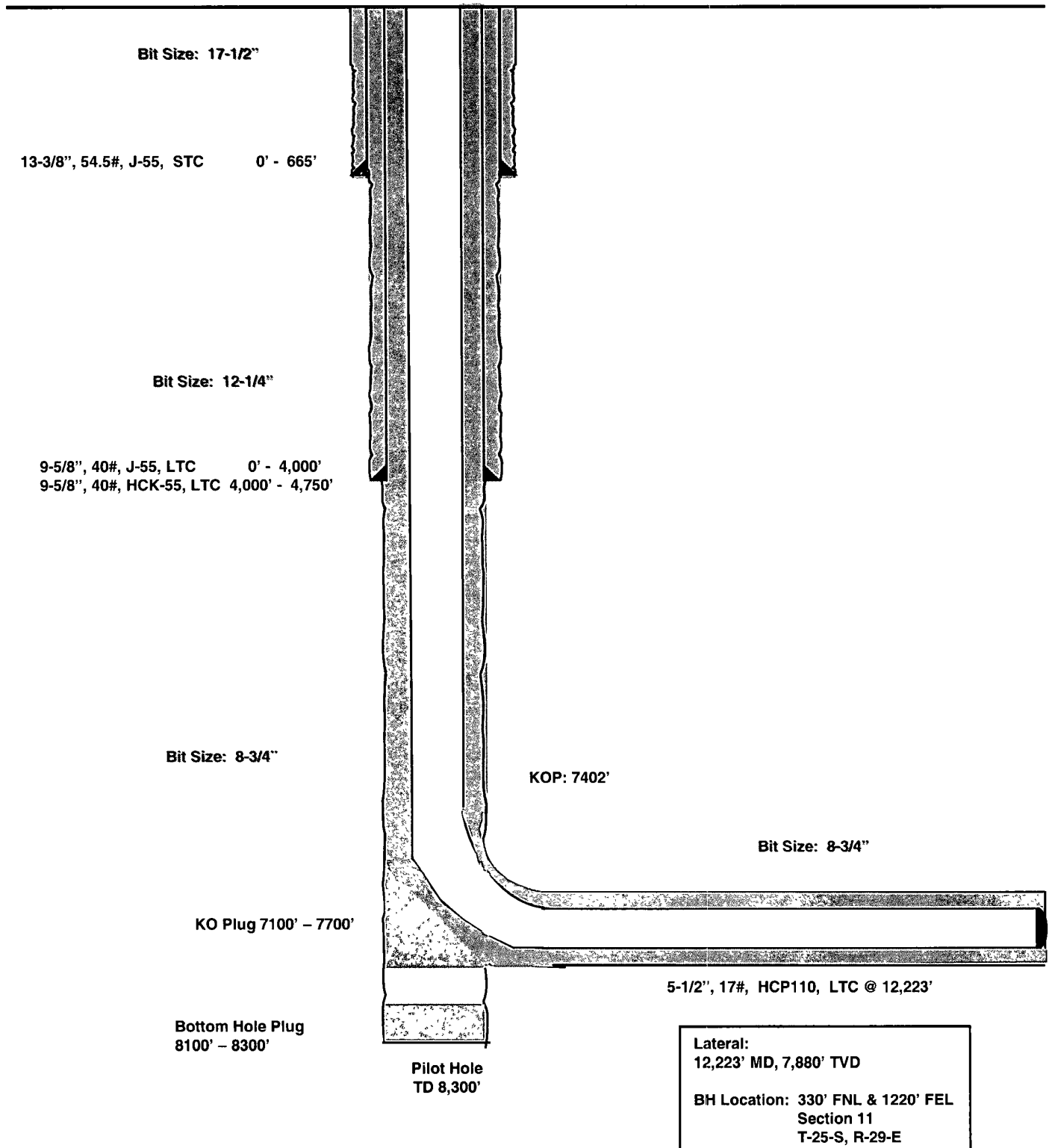
Eddy County, New Mexico

435 FSL  
1220' FEL  
Section 11  
T-25-S, R-29-E

Proposed Wellbore

API: 30-015-

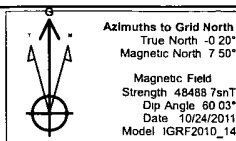
KB: 3,146.0'  
GL: 3,121.0'



# EOG Resources

**Project: Eddy County, NM (Nad27)**  
**Site: Elk Wallow 11 State**  
**Well: Elk Wallow 11 State 9H**  
**Wellbore: Wellbore #1**  
**Plan: Plan #1 102411**  
**Rig: Cactus Rig No. 139**

**PROJECT DETAILS Eddy County, NM (Nad27)**  
 Geodetic System US State Plane 1927 (Exact solution)  
 Datum NAD 1927 (NADCON CONUS)  
 Ellipsoid Clarke 1866  
 Zone New Mexico East 3001  
 System Datum Mean Sea Level  
 Location North Grid



## WELL DETAILS: Elk Wallow 11 State 9H

Ground Level	3121 00
Latitude	32° 8' 18.269 N 103° 57' 0.034 W
Northing	414287 90
Easting	618649 90

## WELLBORE TARGET DETAILS (MAP CO-ORDINATES)

Name	TVD	+N/-S	+E/-W	Northing	Easting	Shape
BHL Elk Wallow 11 State 9H	7880 00	4548 30	-32 80	418836 20	618617 10	Point

## SECTION DETAILS

MD	Inc	Azi	TVD	+N/-S	+E/-W	Dleg	TFace	Vsect
0 00	0 00	0 00	0 00	0 00	0 00	0 00	0 00	0 00
7402 54	0 00	0 00	7402 54	0 00	0 00	0 00	0 00	0 00
8152 54	90 00	359 59	7880 00	477 45	-3 44	12 00	359 59	477 46
12223 49	90 00	359 59	7880 00	4548 30	-32 80	0 00	0 00	4548 42

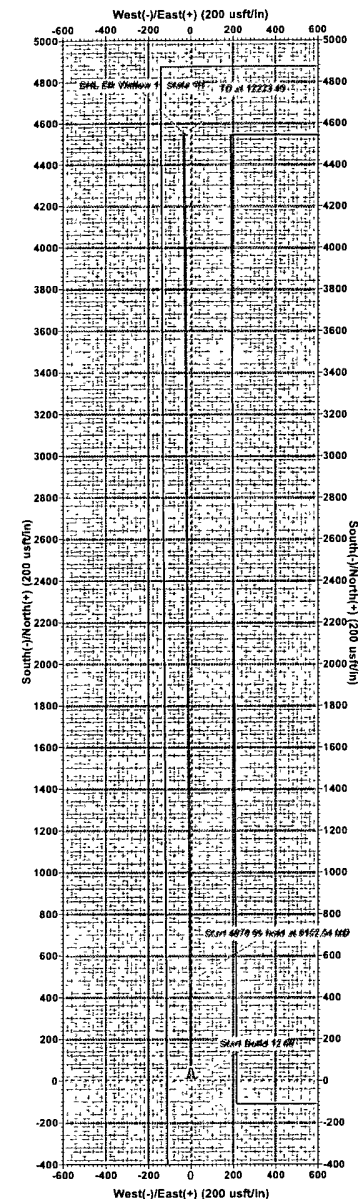
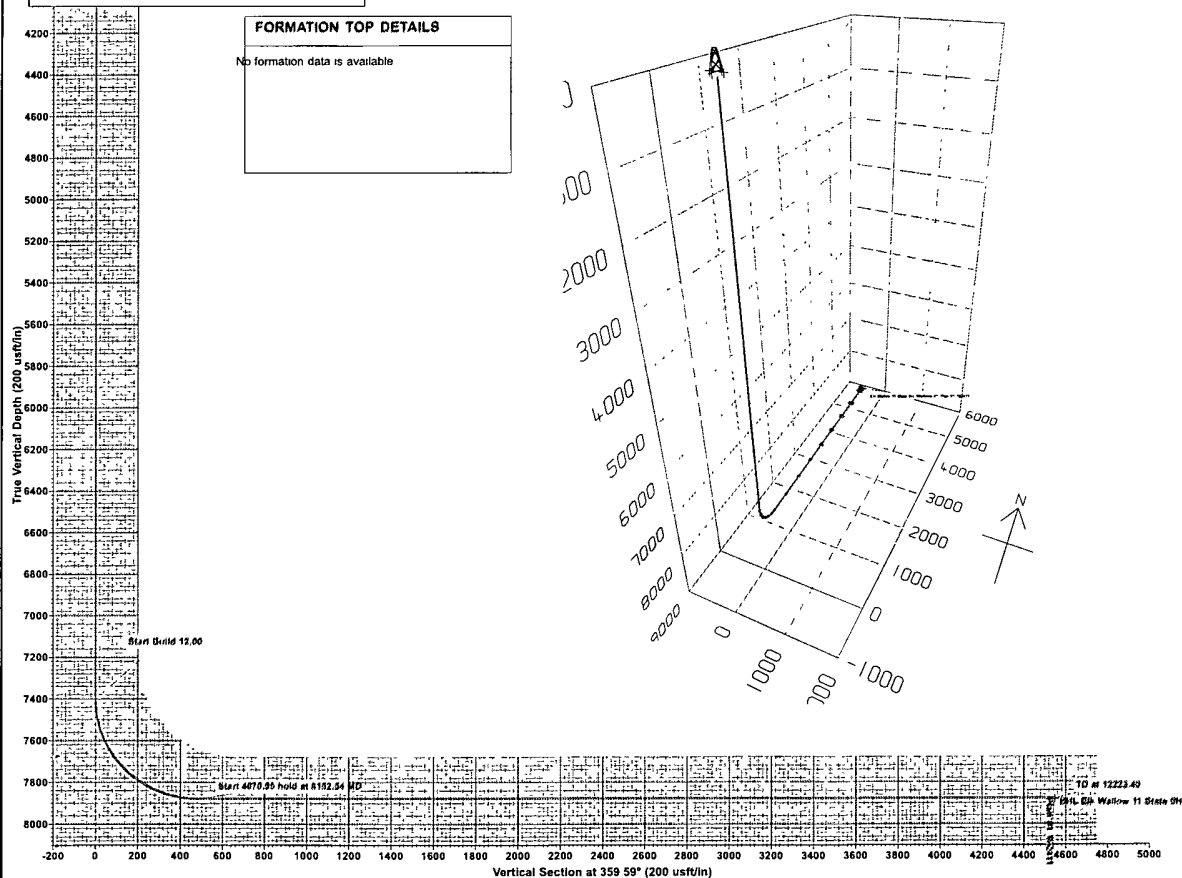
BHL Elk Wallow 11 State 9H

## ANNOTATIONS

TVD	MD	Annotation
7402 54	7402 54	Start Build 12 00
7880 00	8152 54	Start 4070 95 hold at 8152 54 MD
7880 00	12223 49	TD at 12223 49

## FORMATION TOP DETAILS

No formation data is available



## **EOG Resources**

Eddy County, NM (Nad27)

Elk Wallow 11 State

Elk Wallow 11 State 9H

Wellbore #1

Plan: Plan #1 102411

## **EOG Resources**

24 October, 2011



Phoenix Technology Services  
EOG Resources



<b>Company:</b>	EOG Resources	<b>Local Co-ordinate Reference:</b>	Well Elk Wallow 11 State 9H
<b>Project:</b>	Eddy County, NM (Nad27)	<b>TVD Reference:</b>	WELL @ 3146.00usft (Original Well Elev + 25' KB)
<b>Site:</b>	Elk Wallow 11 State	<b>MD Reference:</b>	WELL @ 3146.00usft (Original Well Elev + 25' KB)
<b>Well:</b>	Elk Wallow 11 State 9H	<b>North Reference:</b>	Grid
<b>Wellbore:</b>	Wellbore #1	<b>Survey Calculation Method:</b>	Minimum Curvature
<b>Design:</b>	Plan #1 102411	<b>Database:</b>	GCR DB v5000

<b>Project</b>	Eddy County, NM (Nad27)		
<b>Map System:</b>	US State Plane 1927 (Exact solution)	<b>System Datum:</b>	Mean Sea Level
<b>Geo Datum:</b>	NAD 1927 (NADCON CONUS)		
<b>Map Zone:</b>	New Mexico East 3001		

<b>Site</b>	Elk Wallow 11 State		
<b>Site Position:</b>		<b>Northing:</b>	419,025.40 usft
<b>From:</b>	Map	<b>Easting:</b>	618,185.70 usft
<b>Position Uncertainty:</b>	0.00 usft	<b>Slot Radius:</b>	13-3/16 "
		<b>Latitude:</b>	32° 9' 5.189 N
		<b>Longitude:</b>	103° 57' 5.237 W
		<b>Grid Convergence:</b>	0.20 °

<b>Well</b>	Elk Wallow 11 State 9H		
<b>Well Position</b>	<b>+N/-S</b>	0.00 usft	<b>Northing:</b>
	<b>+E/-W</b>	0.00 usft	<b>Easting:</b>
<b>Position Uncertainty</b>	0.00 usft		<b>Wellhead Elevation:</b>
			usft
			<b>Latitude:</b>
			32° 8' 18.289 N
			<b>Longitude:</b>
			103° 57' 0.034 W
			<b>Ground Level:</b>
			3,121.00 usft

<b>Wellbore</b>	Wellbore #1		
<b>Magnetics</b>	<b>Model Name</b>	<b>Sample Date</b>	<b>Declination</b>
			(°)
	IGRF2010_14	10/24/2011	7.71
			<b>Dip Angle</b>
			(°)
			60.03
			<b>Field Strength</b>
			(nT)
			48,489

<b>Design</b>	Plan #1 102411		
<b>Audit Notes:</b>			
<b>Version:</b>	<b>Phase:</b>	PLAN	<b>Tie On Depth:</b>
			0.00
<b>Vertical Section:</b>	<b>Depth From (TVD)</b>	<b>+N/-S</b>	<b>+E/-W</b>
	(usft)	(usft)	(usft)
	0.00	0.00	0.00
			<b>Direction</b>
			(°)
			359.59

<b>Survey Tool Program</b>	Date 10/24/2011		
<b>From</b>	<b>To</b>	<b>Survey (Wellbore)</b>	<b>Tool Name</b>
(usft)	(usft)		
0.00	12,223.49	Plan #1 102411 (Wellbore #1)	MWD
			<b>Description</b>
			MWD - Standard

Phoenix Technology Services  
EOG Resources



<b>Company:</b>	EOG Resources	<b>Local Co-ordinate Reference:</b>	Well Elk Wallow 11 State 9H
<b>Project:</b>	Eddy County, NM (Nad27)	<b>TVD Reference:</b>	WELL @ 3146.00usft (Original Well Elev + 25' KB)
<b>Site:</b>	Elk Wallow 11 State	<b>MD Reference:</b>	WELL @ 3146.00usft (Original Well Elev + 25' KB)
<b>Well:</b>	Elk Wallow 11 State 9H	<b>North Reference:</b>	Grid
<b>Wellbore:</b>	Wellbore #1	<b>Survey Calculation Method:</b>	Minimum Curvature
<b>Design:</b>	Plan #1 102411	<b>Database:</b>	GCR DB v5000

Planned Survey											
MD (usft)	Inc (°)	Azi (azimuth) (°)	TVDSS (usft)	TVD (usft)	N/S (usft)	E/W (usft)	V. Sec (usft)	DLeg (°/100usft)	Northing (usft)	Easting (usft)	
0.00	0.00	0.00	-3,146.00	0.00	0.00	0.00	0.00	0.00	414,287.90	618,649.90	
100.00	0.00	0.00	-3,046.00	100.00	0.00	0.00	0.00	0.00	414,287.90	618,649.90	
200.00	0.00	0.00	-2,946.00	200.00	0.00	0.00	0.00	0.00	414,287.90	618,649.90	
300.00	0.00	0.00	-2,846.00	300.00	0.00	0.00	0.00	0.00	414,287.90	618,649.90	
400.00	0.00	0.00	-2,746.00	400.00	0.00	0.00	0.00	0.00	414,287.90	618,649.90	
500.00	0.00	0.00	-2,646.00	500.00	0.00	0.00	0.00	0.00	414,287.90	618,649.90	
600.00	0.00	0.00	-2,546.00	600.00	0.00	0.00	0.00	0.00	414,287.90	618,649.90	
700.00	0.00	0.00	-2,446.00	700.00	0.00	0.00	0.00	0.00	414,287.90	618,649.90	
800.00	0.00	0.00	-2,346.00	800.00	0.00	0.00	0.00	0.00	414,287.90	618,649.90	
900.00	0.00	0.00	-2,246.00	900.00	0.00	0.00	0.00	0.00	414,287.90	618,649.90	
1,000.00	0.00	0.00	-2,146.00	1,000.00	0.00	0.00	0.00	0.00	414,287.90	618,649.90	
1,100.00	0.00	0.00	-2,046.00	1,100.00	0.00	0.00	0.00	0.00	414,287.90	618,649.90	
1,200.00	0.00	0.00	-1,946.00	1,200.00	0.00	0.00	0.00	0.00	414,287.90	618,649.90	
1,300.00	0.00	0.00	-1,846.00	1,300.00	0.00	0.00	0.00	0.00	414,287.90	618,649.90	
1,400.00	0.00	0.00	-1,746.00	1,400.00	0.00	0.00	0.00	0.00	414,287.90	618,649.90	
1,500.00	0.00	0.00	-1,646.00	1,500.00	0.00	0.00	0.00	0.00	414,287.90	618,649.90	
1,600.00	0.00	0.00	-1,546.00	1,600.00	0.00	0.00	0.00	0.00	414,287.90	618,649.90	
1,700.00	0.00	0.00	-1,446.00	1,700.00	0.00	0.00	0.00	0.00	414,287.90	618,649.90	
1,800.00	0.00	0.00	-1,346.00	1,800.00	0.00	0.00	0.00	0.00	414,287.90	618,649.90	
1,900.00	0.00	0.00	-1,246.00	1,900.00	0.00	0.00	0.00	0.00	414,287.90	618,649.90	
2,000.00	0.00	0.00	-1,146.00	2,000.00	0.00	0.00	0.00	0.00	414,287.90	618,649.90	
2,100.00	0.00	0.00	-1,046.00	2,100.00	0.00	0.00	0.00	0.00	414,287.90	618,649.90	
2,200.00	0.00	0.00	-946.00	2,200.00	0.00	0.00	0.00	0.00	414,287.90	618,649.90	
2,300.00	0.00	0.00	-846.00	2,300.00	0.00	0.00	0.00	0.00	414,287.90	618,649.90	
2,400.00	0.00	0.00	-746.00	2,400.00	0.00	0.00	0.00	0.00	414,287.90	618,649.90	
2,500.00	0.00	0.00	-646.00	2,500.00	0.00	0.00	0.00	0.00	414,287.90	618,649.90	
2,600.00	0.00	0.00	-546.00	2,600.00	0.00	0.00	0.00	0.00	414,287.90	618,649.90	

**Phoenix Technology Services**  
EOG Resources



<b>Company:</b>	EOG Resources	<b>Local Co-ordinate Reference:</b>	Well Elk Wallow 11 State 9H
<b>Project:</b>	Eddy County, NM (Nad27)	<b>TVD Reference:</b>	WELL @ 3146.00usft (Original Well Elev + 25' KB)
<b>Site:</b>	Elk Wallow 11 State	<b>MD Reference:</b>	WELL @ 3146.00usft (Original Well Elev + 25' KB)
<b>Well:</b>	Elk Wallow 11 State 9H	<b>North Reference:</b>	Grid
<b>Wellbore:</b>	Wellbore #1	<b>Survey Calculation Method:</b>	Minimum Curvature
<b>Design:</b>	Plan #1 102411	<b>Database:</b>	GCR DB v5000

**Planned Survey**

MD (usft)	Inc (°)	Azi (azimuth) (°)	TVDSS (usft)	TVD (usft)	N/S (usft)	E/W (usft)	V. Sec (usft)	DLeg (°/100usft)	Northing (usft)	Easting (usft)
2,700.00	0.00	0.00	-446.00	2,700.00	0.00	0.00	0.00	0.00	414,287.90	618,649.90
2,800.00	0.00	0.00	-346.00	2,800.00	0.00	0.00	0.00	0.00	414,287.90	618,649.90
2,900.00	0.00	0.00	-246.00	2,900.00	0.00	0.00	0.00	0.00	414,287.90	618,649.90
3,000.00	0.00	0.00	-146.00	3,000.00	0.00	0.00	0.00	0.00	414,287.90	618,649.90
3,100.00	0.00	0.00	-46.00	3,100.00	0.00	0.00	0.00	0.00	414,287.90	618,649.90
3,200.00	0.00	0.00	54.00	3,200.00	0.00	0.00	0.00	0.00	414,287.90	618,649.90
3,300.00	0.00	0.00	154.00	3,300.00	0.00	0.00	0.00	0.00	414,287.90	618,649.90
3,400.00	0.00	0.00	254.00	3,400.00	0.00	0.00	0.00	0.00	414,287.90	618,649.90
3,500.00	0.00	0.00	354.00	3,500.00	0.00	0.00	0.00	0.00	414,287.90	618,649.90
3,600.00	0.00	0.00	454.00	3,600.00	0.00	0.00	0.00	0.00	414,287.90	618,649.90
3,700.00	0.00	0.00	554.00	3,700.00	0.00	0.00	0.00	0.00	414,287.90	618,649.90
3,800.00	0.00	0.00	654.00	3,800.00	0.00	0.00	0.00	0.00	414,287.90	618,649.90
3,900.00	0.00	0.00	754.00	3,900.00	0.00	0.00	0.00	0.00	414,287.90	618,649.90
4,000.00	0.00	0.00	854.00	4,000.00	0.00	0.00	0.00	0.00	414,287.90	618,649.90
4,100.00	0.00	0.00	954.00	4,100.00	0.00	0.00	0.00	0.00	414,287.90	618,649.90
4,200.00	0.00	0.00	1,054.00	4,200.00	0.00	0.00	0.00	0.00	414,287.90	618,649.90
4,300.00	0.00	0.00	1,154.00	4,300.00	0.00	0.00	0.00	0.00	414,287.90	618,649.90
4,400.00	0.00	0.00	1,254.00	4,400.00	0.00	0.00	0.00	0.00	414,287.90	618,649.90
4,500.00	0.00	0.00	1,354.00	4,500.00	0.00	0.00	0.00	0.00	414,287.90	618,649.90
4,600.00	0.00	0.00	1,454.00	4,600.00	0.00	0.00	0.00	0.00	414,287.90	618,649.90
4,700.00	0.00	0.00	1,554.00	4,700.00	0.00	0.00	0.00	0.00	414,287.90	618,649.90
4,800.00	0.00	0.00	1,654.00	4,800.00	0.00	0.00	0.00	0.00	414,287.90	618,649.90
4,900.00	0.00	0.00	1,754.00	4,900.00	0.00	0.00	0.00	0.00	414,287.90	618,649.90
5,000.00	0.00	0.00	1,854.00	5,000.00	0.00	0.00	0.00	0.00	414,287.90	618,649.90
5,100.00	0.00	0.00	1,954.00	5,100.00	0.00	0.00	0.00	0.00	414,287.90	618,649.90
5,200.00	0.00	0.00	2,054.00	5,200.00	0.00	0.00	0.00	0.00	414,287.90	618,649.90
5,300.00	0.00	0.00	2,154.00	5,300.00	0.00	0.00	0.00	0.00	414,287.90	618,649.90



Phoenix Technology Services  
EOG Resources



<b>Company:</b>	EOG Resources	<b>Local Co-ordinate Reference:</b>	Well Elk Wallow 11 State 9H
<b>Project:</b>	Eddy County, NM (Nad27)	<b>TVD Reference:</b>	WELL @ 3146 00usft (Original Well Elev + 25' KB)
<b>Site:</b>	Elk Wallow 11 State	<b>MD Reference:</b>	WELL @ 3146 00usft (Original Well Elev + 25' KB)
<b>Well:</b>	Elk Wallow 11 State 9H	<b>North Reference:</b>	Grid
<b>Wellbore:</b>	Wellbore #1	<b>Survey Calculation Method:</b>	Minimum Curvature
<b>Design:</b>	Plan #1 102411	<b>Database:</b>	GCR DB v5000

Planned Survey											
MD (usft)	Inc (°)	Azi (azimuth) (°)	TVDSS (usft)	TVD (usft)	N/S (usft)	E/W (usft)	V. Sec (usft)	DLeg (°/100usft)	Northing (usft)	Easting (usft)	
5,400.00	0.00	0.00	2,254.00	5,400.00	0.00	0.00	0.00	0.00	414,287.90	618,649.90	
5,500.00	0.00	0.00	2,354.00	5,500.00	0.00	0.00	0.00	0.00	414,287.90	618,649.90	
5,600.00	0.00	0.00	2,454.00	5,600.00	0.00	0.00	0.00	0.00	414,287.90	618,649.90	
5,700.00	0.00	0.00	2,554.00	5,700.00	0.00	0.00	0.00	0.00	414,287.90	618,649.90	
5,800.00	0.00	0.00	2,654.00	5,800.00	0.00	0.00	0.00	0.00	414,287.90	618,649.90	
5,900.00	0.00	0.00	2,754.00	5,900.00	0.00	0.00	0.00	0.00	414,287.90	618,649.90	
6,000.00	0.00	0.00	2,854.00	6,000.00	0.00	0.00	0.00	0.00	414,287.90	618,649.90	
6,100.00	0.00	0.00	2,954.00	6,100.00	0.00	0.00	0.00	0.00	414,287.90	618,649.90	
6,200.00	0.00	0.00	3,054.00	6,200.00	0.00	0.00	0.00	0.00	414,287.90	618,649.90	
6,300.00	0.00	0.00	3,154.00	6,300.00	0.00	0.00	0.00	0.00	414,287.90	618,649.90	
6,400.00	0.00	0.00	3,254.00	6,400.00	0.00	0.00	0.00	0.00	414,287.90	618,649.90	
6,500.00	0.00	0.00	3,354.00	6,500.00	0.00	0.00	0.00	0.00	414,287.90	618,649.90	
6,600.00	0.00	0.00	3,454.00	6,600.00	0.00	0.00	0.00	0.00	414,287.90	618,649.90	
6,700.00	0.00	0.00	3,554.00	6,700.00	0.00	0.00	0.00	0.00	414,287.90	618,649.90	
6,800.00	0.00	0.00	3,654.00	6,800.00	0.00	0.00	0.00	0.00	414,287.90	618,649.90	
6,900.00	0.00	0.00	3,754.00	6,900.00	0.00	0.00	0.00	0.00	414,287.90	618,649.90	
7,000.00	0.00	0.00	3,854.00	7,000.00	0.00	0.00	0.00	0.00	414,287.90	618,649.90	
7,100.00	0.00	0.00	3,954.00	7,100.00	0.00	0.00	0.00	0.00	414,287.90	618,649.90	
7,200.00	0.00	0.00	4,054.00	7,200.00	0.00	0.00	0.00	0.00	414,287.90	618,649.90	
7,300.00	0.00	0.00	4,154.00	7,300.00	0.00	0.00	0.00	0.00	414,287.90	618,649.90	
7,400.00	0.00	0.00	4,254.00	7,400.00	0.00	0.00	0.00	0.00	414,287.90	618,649.90	
7,402.54	0.00	0.00	4,256.54	7,402.54	0.00	0.00	0.00	0.00	414,287.90	618,649.90	
Start Build 12.00											
7,500.00	11.70	359.59	4,353.32	7,499.32	9.91	-0.07	9.91	12.00	414,297.81	618,649.83	
7,600.00	23.70	359.59	4,448.42	7,594.42	40.25	-0.29	40.25	12.00	414,328.15	618,649.61	
7,700.00	35.70	359.59	4,535.13	7,681.13	89.70	-0.65	89.70	12.00	414,377.60	618,649.25	
7,800.00	47.70	359.59	4,609.66	7,755.66	156.09	-1.13	156.10	12.00	414,443.99	618,648.77	

**Phoenix Technology Services**  
EOG Resources



<b>Company:</b>	EOG Resources	<b>Local Co-ordinate Reference:</b>	Well Elk Wallow 11 State 9H
<b>Project:</b>	Eddy County, NM (Nad27)	<b>TVD Reference:</b>	WELL @ 3146.00usft (Original Well Elev + 25' KB)
<b>Site:</b>	Elk Wallow 11 State	<b>MD Reference:</b>	WELL @ 3146.00usft (Original Well Elev + 25' KB)
<b>Well:</b>	Elk Wallow 11 State 9H	<b>North Reference:</b>	Grid
<b>Wellbore:</b>	Wellbore #1	<b>Survey Calculation Method:</b>	Minimum Curvature
<b>Design:</b>	Plan #1 102411	<b>Database:</b>	GCR DB v5000

Planned Survey										
MD (usft)	Inc (°)	Azi (azimuth) (°)	TVDSS (usft)	TVD (usft)	N/S (usft)	E/W (usft)	V. Sec (usft)	DLeg (°/100usft)	Northing (usft)	Easting (usft)
7,900.00	59.70	359.59	4,668.76	7,814.76	236.53	-1.71	236.54	12.00	414,524.43	618,648.19
8,000.00	71.70	359.59	4,709.84	7,855.84	327.50	-2.36	327.51	12.00	414,615.40	618,647.54
8,100.00	83.70	359.59	4,731.11	7,877.11	425.02	-3.07	425.04	12.00	414,712.92	618,646.83
8,152.54	90.00	359.59	4,734.00	7,880.00	477.45	-3.44	477.46	12.00	414,765.35	618,646.46
Start 4070.95 hold at 8152.54 MD										
8,200.00	90.00	359.59	4,734.00	7,880.00	524.92	-3.79	524.93	0.00	414,812.82	618,646.11
8,300.00	90.00	359.59	4,734.00	7,880.00	624.91	-4.51	624.93	0.00	414,912.81	618,645.39
8,400.00	90.00	359.59	4,734.00	7,880.00	724.91	-5.23	724.93	0.00	415,012.81	618,644.67
8,500.00	90.00	359.59	4,734.00	7,880.00	824.91	-5.95	824.93	0.00	415,112.81	618,643.95
8,600.00	90.00	359.59	4,734.00	7,880.00	924.91	-6.67	924.93	0.00	415,212.81	618,643.23
8,700.00	90.00	359.59	4,734.00	7,880.00	1,024.90	-7.39	1,024.93	0.00	415,312.80	618,642.51
8,800.00	90.00	359.59	4,734.00	7,880.00	1,124.90	-8.11	1,124.93	0.00	415,412.80	618,641.79
8,900.00	90.00	359.59	4,734.00	7,880.00	1,224.90	-8.83	1,224.93	0.00	415,512.80	618,641.07
9,000.00	90.00	359.59	4,734.00	7,880.00	1,324.90	-9.55	1,324.93	0.00	415,612.80	618,640.35
9,100.00	90.00	359.59	4,734.00	7,880.00	1,424.89	-10.28	1,424.93	0.00	415,712.79	618,639.62
9,200.00	90.00	359.59	4,734.00	7,880.00	1,524.89	-11.00	1,524.93	0.00	415,812.79	618,638.90
9,300.00	90.00	359.59	4,734.00	7,880.00	1,624.89	-11.72	1,624.93	0.00	415,912.79	618,638.18
9,400.00	90.00	359.59	4,734.00	7,880.00	1,724.88	-12.44	1,724.93	0.00	416,012.78	618,637.46
9,500.00	90.00	359.59	4,734.00	7,880.00	1,824.88	-13.16	1,824.93	0.00	416,112.78	618,636.74
9,600.00	90.00	359.59	4,734.00	7,880.00	1,924.88	-13.88	1,924.93	0.00	416,212.78	618,636.02
9,700.00	90.00	359.59	4,734.00	7,880.00	2,024.88	-14.60	2,024.93	0.00	416,312.78	618,635.30
9,800.00	90.00	359.59	4,734.00	7,880.00	2,124.87	-15.32	2,124.93	0.00	416,412.77	618,634.58
9,900.00	90.00	359.59	4,734.00	7,880.00	2,224.87	-16.04	2,224.93	0.00	416,512.77	618,633.86
10,000.00	90.00	359.59	4,734.00	7,880.00	2,324.87	-16.77	2,324.93	0.00	416,612.77	618,633.13
10,100.00	90.00	359.59	4,734.00	7,880.00	2,424.87	-17.49	2,424.93	0.00	416,712.77	618,632.41
10,200.00	90.00	359.59	4,734.00	7,880.00	2,524.86	-18.21	2,524.93	0.00	416,812.76	618,631.69
10,300.00	90.00	359.59	4,734.00	7,880.00	2,624.86	-18.93	2,624.93	0.00	416,912.76	618,630.97

**Phoenix Technology Services**  
EOG Resources



<b>Company:</b>	EOG Resources	<b>Local Co-ordinate Reference:</b>	Well Elk Wallow 11 State 9H
<b>Project:</b>	Eddy County, NM (Nad27)	<b>TVD Reference:</b>	WELL @ 3146.00usft (Original Well Elev + 25' KB)
<b>Site:</b>	Elk Wallow 11 State	<b>MD Reference:</b>	WELL @ 3146.00usft (Original Well Elev + 25' KB)
<b>Well:</b>	Elk Wallow 11 State 9H	<b>North Reference:</b>	Grid
<b>Wellbore:</b>	Wellbore #1	<b>Survey Calculation Method:</b>	Minimum Curvature
<b>Design:</b>	Plan #1 102411	<b>Database:</b>	GCR DB v5000

Planned Survey											
MD (usft)	Inc (°)	Azi (azimuth) (°)	TVDSS (usft)	TVD (usft)	N/S (usft)	E/W (usft)	V. Sec (usft)	DLeg (°/100usft)	Northing (usft)	Easting (usft)	
10,400.00	90.00	359.59	4,734.00	7,880.00	2,724.86	-19.65	2,724.93	0.00	417,012.76	618,630.25	
10,500.00	90.00	359.59	4,734.00	7,880.00	2,824.86	-20.37	2,824.93	0.00	417,112.76	618,629.53	
10,600.00	90.00	359.59	4,734.00	7,880.00	2,924.85	-21.09	2,924.93	0.00	417,212.75	618,628.81	
10,700.00	90.00	359.59	4,734.00	7,880.00	3,024.85	-21.81	3,024.93	0.00	417,312.75	618,628.09	
10,800.00	90.00	359.59	4,734.00	7,880.00	3,124.85	-22.53	3,124.93	0.00	417,412.75	618,627.37	
10,900.00	90.00	359.59	4,734.00	7,880.00	3,224.85	-23.26	3,224.93	0.00	417,512.75	618,626.64	
11,000.00	90.00	359.59	4,734.00	7,880.00	3,324.84	-23.98	3,324.93	0.00	417,612.74	618,625.92	
11,100.00	90.00	359.59	4,734.00	7,880.00	3,424.84	-24.70	3,424.93	0.00	417,712.74	618,625.20	
11,200.00	90.00	359.59	4,734.00	7,880.00	3,524.84	-25.42	3,524.93	0.00	417,812.74	618,624.48	
11,300.00	90.00	359.59	4,734.00	7,880.00	3,624.84	-26.14	3,624.93	0.00	417,912.74	618,623.76	
11,400.00	90.00	359.59	4,734.00	7,880.00	3,724.83	-26.86	3,724.93	0.00	418,012.73	618,623.04	
11,500.00	90.00	359.59	4,734.00	7,880.00	3,824.83	-27.58	3,824.93	0.00	418,112.73	618,622.32	
11,600.00	90.00	359.59	4,734.00	7,880.00	3,924.83	-28.30	3,924.93	0.00	418,212.73	618,621.60	
11,700.00	90.00	359.59	4,734.00	7,880.00	4,024.83	-29.02	4,024.93	0.00	418,312.73	618,620.88	
11,800.00	90.00	359.59	4,734.00	7,880.00	4,124.82	-29.75	4,124.93	0.00	418,412.72	618,620.15	
11,900.00	90.00	359.59	4,734.00	7,880.00	4,224.82	-30.47	4,224.93	0.00	418,512.72	618,619.43	
12,000.00	90.00	359.59	4,734.00	7,880.00	4,324.82	-31.19	4,324.93	0.00	418,612.72	618,618.71	
12,100.00	90.00	359.59	4,734.00	7,880.00	4,424.81	-31.91	4,424.93	0.00	418,712.71	618,617.99	
12,200.00	90.00	359.59	4,734.00	7,880.00	4,524.81	-32.63	4,524.93	0.00	418,812.71	618,617.27	
12,223.49	90.00	359.59	4,734.00	7,880.00	4,548.30	-32.80	4,548.42	0.00	418,836.20	618,617.10	
TD at 12223.49											

Phoenix Technology Services  
EOG Resources



<b>Company:</b>	EOG Resources	<b>Local Co-ordinate Reference:</b>	Well Elk Wallow 11 State 9H
<b>Project:</b>	Eddy County, NM (Nad27)	<b>TVD Reference:</b>	WELL @ 3146.00usft (Original Well Elev + 25' KB)
<b>Site:</b>	Elk Wallow 11 State	<b>MD Reference:</b>	WELL @ 3146.00usft (Original Well Elev + 25' KB)
<b>Well:</b>	Elk Wallow 11 State 9H	<b>North Reference:</b>	Grid
<b>Wellbore:</b>	Wellbore #1	<b>Survey Calculation Method:</b>	Minimum Curvature
<b>Design:</b>	Plan #1 102411	<b>Database:</b>	GCR DB v5000

Plan Annotations

Measured Depth (usft)	Vertical Depth (usft)	Local Coordinates		Comment
		+N/-S (usft)	+E/-W (usft)	
7,402.54	7,402.54	0.00	0.00	Start Build 12.00
8,152.54	7,880.00	477.45	-3.44	Start 4070.95 hold at 8152.54 MD
12,223.49	7,880.00	4,548.30	-32.80	TD at 12223.49

Checked By: \_\_\_\_\_ Approved By: \_\_\_\_\_ Date: \_\_\_\_\_

# EOG Resources, Inc.

Legal's:

Elk Wallow 11 State No. 9H

Eddy Co. New Mexico

435' FSL & 1220' FEL Surface Location

330' FNL & 1220' FEL Bottom Hole Location

Section 11

Section 11

T-25-S, R-29-E

T-25-S, R-29-E

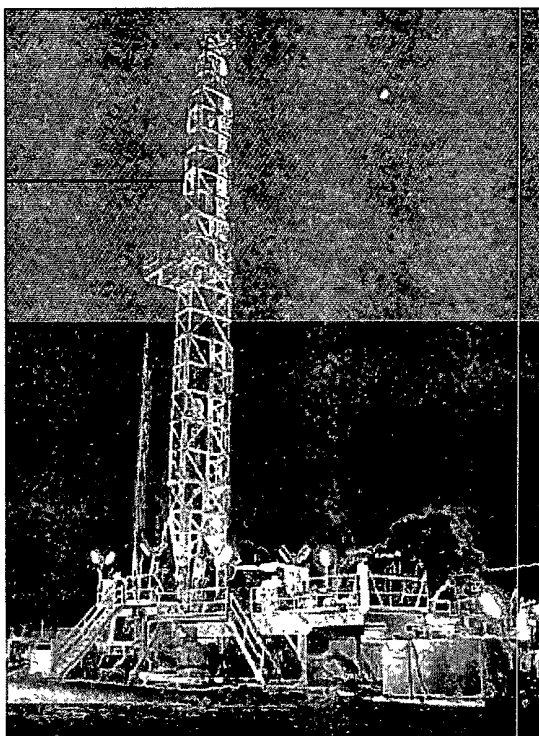
Lat: N 32.1384137

Lat: N 32.1509170

Long: W 103.9500096

Long: W 103.9500632

## H<sub>2</sub>S "Contingency Plan"



Safety Solutions, LLC  
3222 Commercial Dr.

(432) 686-8555  
Midland, TX 79701

## **Table of Contents**

### **I. H<sub>2</sub>S Contingency Plan**

- a. Scope
- b. Objective
- c. Discussion of Plan

### **II. Emergency Procedures**

- a. Emergency Procedures
- b. Emergency Reaction Steps
- c. Simulated Blowout Control Drills

### **III. Ignition Procedures**

- a. Responsibility
- b. Instructions

### **IV. Training Requirements**

### **V. Emergency Equipment**

### **VI. Check Lists**

- a. Status Check List
- b. Procedural Check List

### **VII. Briefing Procedures**

### **VIII. Evacuation Plan**

- a. General Plan
- b. Emergency Phone Lists

### **IX. Maps and Plats**

- a. Location Plat
- b. Map to Location
- c. Radius of Exposure

### **X. General Information**

- a. Drilling/Re-entry Permits
- b. H-9 Permit
- c. H<sub>2</sub>S Permissible Limits
- d. Toxicity Table
- e. Physical Properties
- f. Respirator Use
- g. Emergency Rescue

## H<sub>2</sub>S CONTINGENCY PLAN SECTION

### **Scope:**

This contingency plan provides an organized plan of action for alerting and protecting the public within an area of exposure prior to an intentional release, or following the accidental release of a potentially hazardous volume of hydrogen sulfide. The plan establishes guidelines for all personnel whose work activity may involve exposure to Hydrogen Sulfide Gas (H<sub>2</sub>S).

### **Objective:**

Prevent any and all accidents, and prevent the uncontrolled release of H<sub>2</sub>S into the atmosphere.

Provide proper evacuation procedures to cope with emergencies.

Provide immediate and adequate medical attention should an injury occur.

### **Discussion of Plan:**

#### **Suspected Problem Zones:**

**Implementation:** This plan, with all details, is to be fully implemented 1000' before drilling into the first sour zone.

**Emergency Response Procedure:** This section outlines the conditions and denotes steps to be taken in the event of an emergency.

**Emergency Equipment and Procedure:** This section outlines the safety and emergency equipment that will be required for the drilling of this well.

**Training Provisions:** This section outlines the training provisions that must be adhered to 1000' before drilling into the first sour zone.

**Emergency call list:** Included are the telephone numbers of all persons that would need to be contacted, should an H<sub>2</sub>S emergency occur.

**Briefing:** This section deals with the briefing of all persons involved with the drilling of this well.

**Public Safety:** Public Safety Personnel will be made aware of the drilling of this well.

**Check Lists:** Status check lists and procedural check lists have been included to ensure adherence to the plan.

**General Information:** A general information section has been included to supply support information.

## **EMERGENCY PROCEDURES SECTION**

- I. In the event of any evidence of H<sub>2</sub>S level above 10ppm, take the following steps immediately:
  - a. Secure breathing apparatus.
  - b. Order non-essential personnel out of the danger zone.
  - c. Take steps to determine if the H<sub>2</sub>S level can be corrected or suppressed, and if so, proceed with normal operations.
- II. If uncontrollable conditions occur, proceed with the following:
  - a. Take steps to protect and/or remove any public downwind of the rig, including partial evacuation or isolation. Notify necessary public safety personnel and the New Mexico Oil Conservation Division of the situation.
  - b. Remove all personnel to the Safe Briefing Area.
  - c. Notify public safety personnel for help with maintaining roadblocks and implementing evacuation.
  - d. Determine and proceed with the best possible plan to regain control of the well. Maintain tight security and safety measures.
- III. Responsibility:
  - a. The Company Approved Supervisor shall be responsible for the total implementation of the plan.
  - b. The Company Approved Supervisor shall be in complete command during any emergency.
  - c. The Company Approved Supervisor shall designate a back up Supervisor in the event that he/she is not available.



## EMERGENCY PROCEDURE IMPLEMENTATION

### I. Drilling or Tripping

#### a. All Personnel

- i. When alarm sounds, don escape unit and report to upwind Safe Briefing Area.
- ii. Check status of other personnel (buddy system).
- iii. Secure breathing apparatus.
- iv. Wait for orders from supervisor.

#### b. Drilling Foreman

- i. Report to the upwind Safe Briefing Area.
- ii. Don Breathing Apparatus and return to the point of release with the Tool Pusher or Driller (buddy system).
- iii. Determine the concentration of H<sub>2</sub>S.
- iv. Assess the situation and take appropriate control measures.

#### c. Tool Pusher

- i. Report to the upwind Safe Briefing Area.
- ii. Don Breathing Apparatus and return to the point of release with the Drilling Foreman or the Driller (buddy system).
- iii. Determine the concentration of H<sub>2</sub>S.
- iv. Assess the situation and take appropriate control measures.

#### d. Driller

- i. Check the status of other personnel (in a rescue attempt, always use the buddy system).
- ii. Assign the least essential person to notify the Drilling Foreman and Tool Pusher, in the event of their absence.
- iii. Assume the responsibility of the Drilling Foreman and the Tool Pusher until they arrive, in the event of their absence.

***e. Derrick Man and Floor Hands***

- i. Remain in the upwind Safe Briefing Area until otherwise instructed by a supervisor.

***f. Mud Engineer***

- i. Report to the upwind Safe Briefing Area.
- ii. When instructed, begin check of mud for pH level and H<sub>2</sub>S level.

***g. Safety Personnel***

- i. Don Breathing Apparatus.
- ii. Check status of personnel.
- iii. Wait for instructions from Drilling Foreman or Tool Pusher.

**II. Taking a Kick**

- a. All Personnel report to the upwind Safe Briefing Area.
- b. Follow standard BOP procedures.

**III. Open Hole Logging**

- a. All unnecessary personnel should leave the rig floor.
- b. Drilling Foreman and Safety Personnel should monitor the conditions and make necessary safety equipment recommendations.

**IV. Running Casing or Plugging**

- a. Follow "Drilling or Tripping" procedures.
- b. Assure that all personnel have access to protective equipment.

## **SIMULATED BLOWOUT CONTROL DRILLS**

All drills will be initiated by activating alarm devices (air horn). One long blast, on the air horn, for ACTUAL and SIMULATED Blowout Control Drills. This operation will be performed by the Drilling Foreman or Tool Pusher at least one time per week for each of the following conditions, with each crew:

Drill #1            Bottom Drilling

Drill #2            Tripping Drill Pipe

In each of these drills, the initial reaction time to shutting in the well shall be timed as well as the total time for the crew to complete its entire pit drill assignment. The times must be recorded on the IADC Driller's Log as "Blowout Control Drill".

Drill No.:

Reaction Time to Shut-In:        minutes,                    seconds.

Total Time to Complete Assignment:        minutes,                    seconds.

### **I. Drill Overviews**

#### **a. Drill No. 1 – Bottom Drilling**

- i. Sound the alarm immediately.
- ii. Stop the rotary and hoist Kelly joint above the rotary table.
- iii. Stop the circulatory pump.
- iv. Close the drill pipe rams.
- v. Record casing and drill pipe shut-in pressures and pit volume increases.

#### **b. Drill No. 2 – Tripping Drill Pipe**

- i. Sound the alarm immediately.
- ii. Position the upper tool joint just above the rotary table and set the slips.
- iii. Install a full opening valve or inside blowout preventer tool in order to close the drill pipe.
- iv. Close the drill pipe rams.
- v. Record the shut-in annular pressure.

### **II. Crew Assignments**

a. Drill No. 1 – Bottom Drilling

i. *Driller*

1. Stop the rotary and hoist Kelly joint above the rotary table.
2. Stop the circulatory pump.
3. Check Flow.
4. If flowing, sound the alarm immediately
5. Record the shut-in drill pipe pressure
6. Determine the mud weight increase needed or other courses of action.

ii. *Derrickman*

1. Open choke line valve at BOP.
2. Signal Floor Man #1 at accumulator that choke line is open.
3. Close choke and upstream valve after pipe tam have been closed.
4. Read the shut-in annular pressure and report readings to Driller.

iii. *Floor Man #1*

1. Close the pipe rams after receiving the signal from the Derrickman.
2. Report to Driller for further instructions.

iv. *Floor Man #2*

1. Notify the Tool Pusher and Operator representative of the H<sub>2</sub>S alarms.
2. Check for open fires and, if safe to do so, extinguish them.
3. Stop all welding operations.
4. Turn-off all non-explosions proof lights and instruments.
5. Report to Driller for further instructions.

v. *Tool Pusher*

1. Report to the rig floor.
2. Have a meeting with all crews.

3. Compile and summarize all information.
4. Calculate the proper kill weight.
5. Ensure that proper well procedures are put into action.

*vi. Operator Representative*

1. Notify the Drilling Superintendent.
2. Determine if an emergency exists and if so, activate the contingency plan.

b. Drill No. 2 – Tripping Pipe

i. Driller

1. Sound the alarm immediately when mud volume increase has been detected.
2. Position the upper tool joint just above the rotary table and set slips.
3. Install a full opening valve or inside blowout preventer tool to close the drill pipe.
4. Check flow.
5. Record all data reported by the crew.
6. Determine the course of action.

ii. Derrickman

1. Come down out of derrick.
2. Notify Tool Pusher and Operator Representative.
3. Check for open fires and, if safe to do so , extinguish them.
4. Stop all welding operations.
5. Report to Driller for further instructions.

iii. Floor Man #1

1. Pick up full opening valve or inside blowout preventer tool and stab into tool joint above rotary table (with Floor Man #2).
2. Tighten valve with back-up tongs.

3. Close pipe rams after signal from Floor Man #2.
4. Read accumulator pressure and check for possible high pressure fluid leaks in valves or piping.
5. Report to Driller for further instructions.

iv. Floor Man #2

1. Pick-up full opening valve or inside blowout preventer tool and stab into tool joint above rotary table (with Floor Man #1).
2. Position back-up tongs on drill pipe.
3. Open choke line valve at BOP.
4. Signal Floor Man #1 at accumulator that choke line is open.
5. Close choke and upstream valve after pipe rams have been closed.
6. Check for leaks on BOP stack and choke manifold.
7. Read annular pressure.
8. Report readings to the Driller.

v. Tool Pusher

1. Report to the rig floor.
2. Have a meeting with all of the crews.
3. Compile and summarize all information.
4. See that proper well kill procedures are put into action.

vi. Operator Representative

1. Notify Drilling Superintendent
2. Determine if an emergency exists, and if so, activate the contingency plan.

## **IGNITION PROCEDURES**

### **Responsibility:**

The decision to ignite the well is the responsibility of the DRILLING FOREMAN in concurrence with the STATE POLICE. In the event the Drilling Foreman is incapacitated, it becomes the responsibility of the RIG TOOL PUSHER. This decision should be made only as a last resort and in a situation where it is clear that:

1. Human life and property are endangered.
2. There is no hope of controlling the blowout under the prevailing conditions.

If time permits, notify the main office, but do not delay if human life is in danger. Initiate the first phase of the evacuation plan.

### **Instructions for Igniting the Well:**

1. Two people are required for the actual igniting operation. Both men must wear self-contained breathing apparatus and must use a full body harness and attach a retrievable safety line to the D-Ring in the back. One man must monitor the atmosphere for explosive gases with the LEL monitor, while the Drilling Foreman is responsible for igniting the well.
2. The primary method to ignite is a 25mm flare gun with a range of approximately 500 feet.
3. Ignite from upwind and do not approach any closer than is warranted.
4. Select the ignition site best suited for protection and which offers an easy escape route.
5. Before igniting, check for the presence of combustible gases.
6. After igniting, continue emergency actions and procedures as before.
7. All unassigned personnel will limit their actions to those directed by the Drilling Foreman.

Note: After the well is ignited, burning Hydrogen Sulfide will convert to Sulfur Dioxide, which is also highly toxic. Do not assume the area is safe after the well is ignited.

## **TRAINING PROGRAM**

When working in an area where Hydrogen Sulfide (H<sub>2</sub>S) might be encountered, definite training requirements must be carried out. The Company Supervisor will ensure that all personnel, at the well site, have had adequate training in the following:

1. Hazards and characteristics of Hydrogen Sulfide.
2. Physicals effects of Hydrogen Sulfide on the human body.
3. Toxicity of Hydrogen Sulfide and Sulfur Dioxide.
4. H<sub>2</sub>S detection, Emergency alarm and sensor location.
5. Emergency rescue.
6. Resuscitators.
7. First aid and artificial resuscitation.
8. The effects of Hydrogen Sulfide on metals.
9. Location safety.

Service company personnel and visiting personnel must be notified if the zone contains H<sub>2</sub>S, and each service company must provide adequate training and equipment for their employees before they arrive at the well site.



## **EMERGENCY EQUIPMENT REQUIREMENTS**

### **Lease Entrance Sign:**

Should be located at the lease entrance with the following information:

CAUTION – POTENTIAL POISON GAS  
HYDROGEN SULFIDE  
NO ADMITTANCE WITHOUT AUTHORIZATION

### **Respiratory Equipment:**

- Fresh air breathing equipment should be placed at the safe briefing areas and should include the following:
- Two SCBA's at each briefing area.
- Enough air line units to operate safely, anytime the H<sub>2</sub>S concentration reaches the IDLH level (100 ppm).
- Cascade system with enough breathing air hose and manifolds to reach the rig floor, the derrickman and the other operation areas.

### **Windsocks or Wind Streamers:**

- A minimum of two 10" windsocks located at strategic locations so that they may be seen from any point on location.
- Wind streamers (if preferred) should be placed at various locations on the well site to ensure wind consciousness at all times. (Corners of location).

### **Hydrogen Sulfide Detector and Alarms:**

- 1 - Four channel H<sub>2</sub>S monitor with alarms.
- Four (4) sensors located as follows: #1 – Rig Floor, #2 – Bell Nipple, #3 – Shale Shaker, #4 – Mud Pits.
- Gastec or Draeger pump with tubes.
- Sensor test gas.

**Well Condition Sign and Flags:**

The Well Condition Sign w/flags should be placed a minimum of 150' before you enter the location. It should have three (3) color coded flags (green, yellow and red) that will be used to denote the following location conditions:

GREEN – Normal Operating Conditions

YELLOW – Potential Danger

RED – Danger, H<sub>2</sub>S Gas Present

**Auxiliary Rescue Equipment:**

- Stretcher
- 2 – 100' Rescue lines.
- First Aid Kit properly stocked.

**Mud Inspection Equipment:**

Garret Gas Train or Hach Tester for inspection of Hydrogen Sulfide in the drilling mud system.

**Fire Extinguishers:**

Adequate fire extinguishers shall be located at strategic locations.

**Blowout Preventer:**

- The well shall have hydraulic BOP equipment for the anticipated BHP.
- The BOP should be tested upon installation.
- BOP, Choke Line and Kill Line will be tested as specified by Operator.

**Confined Space Monitor:**

There should be a portable multi-gas monitor with at least 3 sensors (O<sub>2</sub>, LEL H<sub>2</sub>S). This instrument should be used to test the atmosphere of any confined space before entering. It should also be used for atmospheric testing for LEL gas before beginning any type of Hot Work. Proper calibration documentation will need to be provided.

**Communication Equipment:**

- Proper communication equipment such as cell phones or 2-way radios should be available at the rig.
- Radio communication shall be available for communication between the company man's trailer, rig floor and the tool pusher's trailer.

- Communication equipment shall be available on the vehicles.

**Special Control Equipment:**

- Hydraulic BOP equipment with remote control on the ground.
- Rotating head at the surface casing point.

**Evacuation Plan:**

- Evacuation routes should be established prior to spudding the well.
- Should be discussed with all rig personnel.

**Designated Areas:*****Parking and Visitor area:***

- All vehicles are to be parked at a pre-determined safe distance from the wellhead.
- Designated smoking area.

**Safe Briefing Areas:**

- Two Safe Briefing Areas shall be designated on either side of the location at the maximum allowable distance from the well bore so they offset prevailing winds or they are at a 180 degree angle if wind directions tend to shift in the area.
- Personal protective equipment should be stored at both briefing areas or if a moveable cascade trailer is used, it should be kept upwind of existing winds. When wind is from the prevailing direction, both briefing areas should be accessible.

***Note:***

- Additional equipment will be available at the Safety Solutions, LLC office.
- Additional personal H<sub>2</sub>S monitors are available for all employees on location.
- Automatic Flare Igniters are recommended for installation on the rig.

## CHECK LISTS

### Status Check List

Note: Date each item as they are implemented.

1. Sign at location entrance. \_\_\_\_\_
2. Two (2) wind socks (in required locations). \_\_\_\_\_
3. Wind Streamers (if required). \_\_\_\_\_
4. SCBA's on location for all rig personnel and mud loggers. \_\_\_\_\_
5. Air packs, inspected and ready for use. \_\_\_\_\_
6. Spare bottles for each air pack (if required). \_\_\_\_\_
7. Cascade system for refilling air bottles. \_\_\_\_\_
8. Cascade system and hose line hook up. \_\_\_\_\_
9. Choke manifold hooked-up and tested.  
(before drilling out surface casing.) \_\_\_\_\_
10. Remote Hydraulic BOP control (hooked-up and tested before  
drilling out surface casing). \_\_\_\_\_
11. BOP tested (before drilling out surface casing). \_\_\_\_\_
12. Mud engineer on location with equipment to test mud for H<sub>2</sub>S. \_\_\_\_\_
13. Safe Briefing Areas set-up \_\_\_\_\_
14. Well Condition sign and flags on location and ready. \_\_\_\_\_
15. Hydrogen Sulfide detection system hooked -up & tested. \_\_\_\_\_
16. Hydrogen Sulfide alarm system hooked-up & tested. \_\_\_\_\_
17. Stretcher on location at Safe Briefing Area. \_\_\_\_\_
18. 2 – 100' Life Lines on location. \_\_\_\_\_
19. 1 – 20# Fire Extinguisher in safety trailer. \_\_\_\_\_
20. Confined Space Monitor on location and tested. \_\_\_\_\_
21. All rig crews and supervisor trained (as required). \_\_\_\_\_

22. Access restricted for unauthorized personnel.

---

23. Drills on H<sub>2</sub>S and well control procedures.

---

24. All outside service contractors advised of potential H<sub>2</sub>S on the well.

---

25. NO SMOKNG sign posted.

---

26. H<sub>2</sub>S Detector Pump w/tubes on location.

---

27. 25mm Flare Gun on location w/flares.

---

28. Automatic Flare Igniter installed on rig.

---

## Procedural Check List

Perform the following on each tour:

1. Check fire extinguishers to see that they have the proper charge.
2. Check breathing equipment to insure that they have not been tampered with.
3. Check pressure on the supply air bottles to make sure they are capable of recharging.
4. Make sure all of the Hydrogen Sulfide detection systems are operative.

Perform the following each week:

1. Check each piece of breathing equipment to make sure that they are fully charged and operational. This requires that the air cylinder be opened and the mask assembly be put on and tested to make sure that the regulators and masks are properly working. Negative and Positive pressure should be conducted on all masks.
2. BOP skills.
3. Check supply pressure on BOP accumulator stand-by source.
4. Check all breathing air mask assemblies to see that straps are loosened and turned back, ready for use.
5. Check pressure on cascade air cylinders to make sure they are fully charged and ready to use for refill purposes if necessary.
6. Check all cascade system regulators to make sure they work properly.
7. Perform breathing drills with on-site personnel.
8. Check the following supplies for availability:
  - Stretcher
  - Safety Belts and Ropes
  - Spare air Bottles
  - Spare Oxygen Bottles (if resuscitator required)
  - Gas Detector Pump and Tubes
  - Emergency telephone lists
9. Test the Confined Space Monitor to verify the batteries are good

## BRIEFING PROCEDURES

The following scheduled briefings will be held to ensure the effective drilling and operation of this project:

### Pre-Spud Meeting

Date: Prior to spudding the well.

Attendance:   Drilling Supervisor  
                  Drilling Engineer  
                  Drilling Foreman  
                  Rig Tool Pushers  
                  Rig Drillers  
                  Mud Engineer  
                  All Safety Personnel  
                  Key Service Company Personnel

Purpose:        Review and discuss the well program, step-by-step, to insure complete understanding of assignments and responsibilities.

# **EVACUATION PLAN**

## **General Plan**

The direct lines of action prepared by SAFETY SOLUTIONS, LLC to protect the public from hazardous gas situations are as follows:

1. When the company approved supervisor (Drilling Foreman, Tool Pusher or Driller) determine that Hydrogen Sulfide gas cannot be limited to the well location, and the public will be involved, he will activate the evacuation plan. Escape routes are noted on the area map.
2. Company safety personnel or designee will notify the appropriate local government agency that a hazardous condition exists and evacuation needs to be implemented.
3. Company approved safety personnel that have been trained in the use of the proper emergency equipment will be utilized.
4. Law enforcement personnel (State Police, Local Police Department, Fire Department, and the Sheriff's Department) will be called to aid in setting up and maintaining road blocks. Also, they will aid in evacuation of the public if necessary.

NOTE: Law enforcement personnel will not be asked to come into a contaminated area. Their assistance will be limited to uncontaminated areas. Constant radio contact will be maintained with them.

5. After the discharge of gas has been controlled, "Company" safety personnel will determine when the area is safe for re-entry.

**See Emergency Action Plan**



## Emergency Assistance Telephone List

### **PUBLIC SAFETY:** **911 or**

Eddy County Sheriff's Department	(575) 887-7551
Kent Waller	
Fire Department:	
Carlsbad	(575) 885-3125
Artesia	(575) 746-5050
Hospitals:	
Carlsbad	(575) 887-4121
Artesia	(575) 748-3333
Hobbs	(575) 392-1979
Dept. of Public Safety/Carlsbad	(575) 748-9718
Highway Department	(575) 885-3281
New Mexico Oil Conservation	(575) 476-3440
U.S. Dept. of Labor	(575) 887-1174

### **EOG Resources, Inc.**

EOG / Midland	Office (432) 686-3600
---------------	-----------------------

#### **Company Drilling Consultants:**

Danny Kiser    Will Henderson	Cell (432) 894-3417
Larry King	

#### **Drilling Engineer**

Steve Munsell	Office (432) 686-3609
	Cell (432) 894-1256

#### **Operations Manager**

Travis Lain	Office (432) 686-3740
	Cell (432) 254-3521

#### **Drilling Superintendent**

Barney Thompson	Office (432) 686-3678
	Cell (432) 254-9056

#### **Field Drilling Superintendent**

Ron Welch	Cell (432) 386-0592
-----------	---------------------

### **McVay Drilling**

Cactus Drilling	Office (580) 799-2752
Cactus Drilling Rig #123	Rig (432) 894-3417

#### **Tool Pusher:**

Terry Johnson	Cell (575) 370-5620
---------------	---------------------

### **Safety Consultants**

Safety Solutions, LLC	Office (432) 686-8555
Cliff Strasner	Cell (432) 894-9789
Craig Strasner	Cell (432) 894-0341

**MAPS AND PLATS**  
**(Maps & Plats Attached)**

## **Affected Notification List**

(within a 65' radius of exposure @100ppm)

The geologic zones that will be encountered during drilling are known to contain hazardous quantities of H<sub>2</sub>S. The accompanying map illustrates the affected areas of the community. The residents within this radius will be notified via a hand delivered written notice describing the activities, potential hazards, conditions of evacuation, evacuation drill siren alarms and other precautionary measures.

### **Evacuee Description:**

Residents: **THERE ARE NO RESIDENTS WITHIN 3000' ROE.**

### **Notification Process:**

A continuous siren audible to all residence will be activated, signaling evacuation of previously notified and informed residents.

### **Evacuation Plan:**

All evacuees will migrate lateral to the wind direction.

The Oil Company will identify all home bound or highly susceptible individuals and make special evacuation preparations, interfacing with the local and emergency medical service as necessary.

## **GENERAL INFORMATION**

## Toxic Effects of H<sub>2</sub>S Poisoning

Hydrogen Sulfide is extremely toxic. The acceptable ceiling concentration for eight-hour exposure is 10 PPM, which is .001% by volume. Hydrogen Sulfide is heavier than air (specific gravity – 1.192) and is colorless and transparent. Hydrogen Sulfide is almost as toxic as Hydrogen Cyanide and is 5-6 times more toxic than Carbon Monoxide. Occupational exposure limits for Hydrogen Sulfide and other gases are compared below in Table 1. Toxicity table for H<sub>2</sub>S and physical effects are shown in Table 2.

Table 1  
Permissible Exposure Limits of Various Gases

Common Name	Symbol	Sp. Gravity	TLV	STEL	IDLH
Hydrogen Cyanide	HCN	.94	4.7 ppm	C	
Hydrogen Sulfide	H <sub>2</sub> S	1.192	10 ppm	15 ppm	100 ppm
Sulfide Dioxide	SO <sub>2</sub>	2.21	2 ppm	5 ppm	
Chlorine	CL	2.45	.5 ppm	1 ppm	
Carbon Monoxide	CO	.97	25 ppm	200 ppm	
Carbon Dioxide	CO <sub>2</sub>	1.52	5000 ppm	30,000 ppm	
Methane	CH <sub>4</sub>	.55	4.7% LEL	14% UEL	

## Definitions

- A. TLV – Threshold Limit Value is the concentration employees may be exposed based on a TWA (time weighted average) for eight (8) hours in one day for 40 hours in one (1) week. This is set by ACGIH (American Conference of Governmental Hygienists) and regulated by OSHA.
- B. STEL – Short Term Exposure Limit is the 15 minute average concentration an employee may be exposed to providing that the highest exposure never exceeds the OEL (Occupational Exposure Limit). The OEL for H<sub>2</sub>S is 19 PPM.
- C. IDLH – Immediately Dangerous to Life and Health is the concentration that has been determined by the ACGIH to cause serious health problems or death if exposed to this level. The IDLH for H<sub>2</sub>S is 100 PPM.
- D. TWA – Time Weighted Average is the average concentration of any chemical or gas for an eight (8) hour period. This is the concentration that any employee may be exposed based on an TWA.

**TABLE 2**Toxicity Table of H<sub>2</sub>S

## Physical Effects

Percent %	PPM	Can smell less than 1 ppm.
.0001	1	
.001	10	TLV for 8 hours of exposure.
.0015	15	STEL for 15 minutes of exposure.
.01	100	Immediately Dangerous to Life & Health. Kills sense of smell in 3 to 5 minutes.
.02	200	Kills sense of smell quickly, may burn eyes and throat.
.05	500	Dizziness, cessation of breathing begins in a few minutes.
.07	700	Unconscious quickly, death will result if not rescued promptly.
.10	1000	Death will result unless rescued promptly. Artificial resuscitation may be necessary.

## PHYSICAL PROPERTIES OF H<sub>2</sub>S

The properties of all gases are usually described in the context of seven major categories:

- COLOR
- ODOR
- VAPOR DENSITY
- EXPLOSIVE LIMITS
- FLAMMABILITY
- SOLUBILITY (IN WATER)
- BOILING POINT

Hydrogen Sulfide is no exception. Information from these categories should be considered in order to provide a fairly complete picture of the properties of the gas.

### ***COLOR – TRANSPARENT***

Hydrogen Sulfide is colorless so it is invisible. This fact simply means that you can't rely on your eyes to detect its presence. In fact that makes this gas extremely dangerous to be around.

### ***ODOR – ROTTEN EGGS***

Hydrogen Sulfide has a distinctive offensive smell, similar to "rotten eggs". For this reason it earned its common name "sour gas". However, H<sub>2</sub>S, even in low concentrations, is so toxic that it attacks and quickly impairs a victim's sense of smell, so it could be fatal to rely on your nose as a detection device.

### ***VAPOR DENSITY – SPECIFIC GRAVITY OF 1.192***

Hydrogen Sulfide is heavier than air so it tends to settle in low-lying areas like pits, cellars or tanks. If you find yourself in a location where H<sub>2</sub>S is known to exist, protect yourself. Whenever possible, work in an area upwind and keep to higher ground.

### ***EXPLOSIVE LIMITS – 4.3% TO 46%***

Mixed with the right proportion of air or oxygen, H<sub>2</sub>S will ignite and burn or explode, producing another alarming element of danger besides poisoning.

### ***FLAMMABILITY***

Hydrogen Sulfide will burn readily with a distinctive clear blue flame, producing Sulfur Dioxide (SO<sub>2</sub>), another hazardous gas that irritates the eyes and lungs.

### ***SOLUBILITY – 4 TO 1 RATIO WITH WATER***

Hydrogen Sulfide can be dissolved in liquids, which means that it can be present in any container or vessel used to carry or hold well fluids including oil, water, emulsion and sludge. The solubility of H<sub>2</sub>S is dependent on temperature and pressure, but if conditions are right, simply agitating a fluid containing H<sub>2</sub>S may release the gas into the air.

### ***BOILING POINT – (-76 degrees Fahrenheit)***

Liquefied Hydrogen Sulfide boils at a very low temperature, so it is usually found as a gas.

## RESPIRATOR USE

The Occupational Safety and Health Administration (OSHA) regulate the use of respiratory protection to protect the health of employees. OSHA's requirements are written in the Code of Federal Regulations, Title 29, Part 1910, Section 134, Respiratory Protection. This regulation requires that all employees who might be required to wear respirators, shall complete a OSHA mandated medical evaluation questionnaire. The employee then should be fit tested prior to wearing any respirator while being exposed to hazardous gases.

Written procedures shall be prepared covering safe use of respirators in dangerous atmospheric situations, which might be encountered in normal operations or in emergencies. Personnel shall be familiar with these procedures and the available respirators.

Respirators shall be inspected prior to and after each use to make sure that the respirator has been properly cleaned, disinfected and that the respirator works properly. The unit should be fully charged prior to being used.

Anyone who may use respirators shall be properly trained in how to properly seal the face piece. They shall wear respirators in normal air and then in a test atmosphere. (Note: Such items as facial hair (beard or sideburns) and eyeglass temple pieces will not allow a proper seal.) Anyone that may be expected to wear respirators should have these items removed before entering a toxic atmosphere. A special mask must be obtained for anyone who must wear eyeglasses. Contact lenses should not be allowed.

Respirators shall be worn during the following conditions:

- A. Any employee who works near the top or on the top of any tank unless tests reveal less than 20 ppm of H<sub>2</sub>S.
- B. When breaking out any line where H<sub>2</sub>S can reasonably be expected.
- C. When sampling air in areas where H<sub>2</sub>S may be present.
- D. When working in areas where the concentration of H<sub>2</sub>S exceeds the Threshold Limit Value for H<sub>2</sub>S (10 ppm).
- E. At any time where there is a doubt as to the H<sub>2</sub>S level in the area to be entered.



## EMERGENCY RESCUE PROCEDURES

***DO NOT PANIC!!!***

**Remain Calm – Think**

1. Before attempting any rescue you must first get out of the hazardous area yourself. Go to a safe briefing area.
2. Sound alarm and activate the 911 system.
3. Put on breathing apparatus. At least two persons should do this, when available use the buddy system.
4. Rescue the victim and return them to a safe briefing area.
5. Perform an initial assessment and begin proper First Aid/CPR procedures.
6. Keep victim lying down with a blanket or coat, etc., under the shoulders to keep airway open. Conserve body heat and do not leave unattended.
7. If the eyes are affected by H<sub>2</sub>S, wash them thoroughly with potable water. For slight irritation, cold compresses are helpful.
8. In case a person has only minor exposure and does not lose consciousness totally, it's best if he doesn't return to work until the following day.
9. Any personnel overcome by H<sub>2</sub>S should always be examined by medical personnel. They should always be transported to a hospital or doctor.