

OCD Artesia

Form 3160-5
(August 2007)UNITED STATES
DEPARTMENT OF THE INTERIOR
BUREAU OF LAND MANAGEMENTFORM APPROVED
OMB No. 1004-0137
Expires July 31, 2010**SUNDRY NOTICES AND REPORTS ON WELLS**
Do not use this form for proposals to drill or to re-enter an abandoned well. Use Form 3160-3 (APD) for such proposals.**SUBMIT IN TRIPLICATE** - Other instructions on page 2.5. Lease Serial No
NMNM02860

6. If Indian, Allottee or Tribe Name

7. If Unit of CA/Agreement, Name and/or No.
NMNM071016X8. Well Name and No.
PLU PIERCE CANYON 20-24-30 USA 1H9. API Well No.
30-015-3969210. Field and Pool or Exploratory Area
WILDCAT; BONE SPRING11. Country or Parish, State
EDDY, NM

1. Type of Well

☒ Oil Well ☐ Gas Well ☐ Other2. Name of Operator
CHESAPEAKE AGENT FOR BOPCO3a. Address
PO BOX 18496
OKLAHOMA CITY, OK 731543b. Phone No. (include area code)
405-935-24114. Location of Well (Footage, Sec., T, R, M, or Survey Description)
SEC 20-24S-30E MER NMP NWNE 75 FNL 1725 FEL

12. CHECK THE APPROPRIATE BOX(ES) TO INDICATE NATURE OF NOTICE, REPORT OR OTHER DATA

TYPE OF SUBMISSION

☒ Notice of Intent☐ Subsequent Report☐ Final Abandonment Notice☐ Acidize☐ Alter Casing☐ Casing Repair☐ Change Plan☐ Convert to Injection☐ Deepen☐ Fracture Treat☐ New Construction☐ Plug and Abandon☐ Plug Back

TYPE OF ACTION

☐ Production (Start/Resume)☐ Reclamation☐ Recomplete☐ Temporarily Abandon☐ Water Disposal☐ Water Shut-Off☐ Well Integrity☒ Other CEMENTING
CHANGE

13. Describe Proposed or Completed Operation. Clearly state all pertinent details, including estimated starting date of any proposed work and approximate duration thereof. If the proposal is to deepen directionally or recompleat horizontally, give subsurface locations and measured and true vertical depths of all pertinent markers and zones. Attach the Bond under which the work will be performed or provide the Bond No. on file with BLM/BIA. Required subsequent reports must be filed within 30 days following completion of the involved operations. If the operation results in a multiple completion or recompletion in a new interval, a Form 3160-4 must be filed once testing has been completed. Final Abandonment Notices must be filed only after all requirements, including reclamation, have been completed and the operator has determined that the site is ready for final inspection.)

CHESAPEAKE IS REQUESTING THE FOLLOWING CHANGE.

Changing cementing plan for 5-1/2" production casing due to failure to bring cement to surface on 8-5/8" intermediate casing cement job (was topped out afterward). New plan changes from a 2 stage job to a 3 stage job. Please see attached for cement slurry and volume details.

(CHK PN 640123)

SEE ATTACHED FOR
CONDITIONS OF APPROVALAccepted for record
NMOCD

10/11/17/2012

ENTERED
IN AFMS

RECEIVED

JAN 19 2012

NMOCD ARTESIA

14. I hereby certify that the foregoing is true and correct. Name (Printed/Typed)
Lyndee Songer

Title REGULATORY COMPLIANCE TECHNICIAN

Signature

Date 01/17/2012

THIS SPACE FOR FEDERAL OR STATE OFFICE USE

Approved by

PETROLEUM ENGINEER

Title

Office

Conditions of approval, if any, are attached. Approval of this notice does not warrant or certify that the applicant holds legal or equitable title to those rights in the subject lease which would entitle the applicant to conduct operations thereon.

Title 18 U.S.C. Section 1001 and Title 43 U.S.C. Section 1212 make it a crime for any person knowingly and willfully to make to any department or agency of the United States any false, fictitious or fraudulent statements or representations as to any matter within its jurisdiction.

(Instructions on page 2)

APPROVED

JAN 17 2012

BUREAU OF LAND MANAGEMENT
CARLSBAD FIELD OFFICE

Morgan, Ted M

From: Chris Gray <Chris.Gray@chk.com>
Sent: Monday, January 16, 2012 4:36 PM
To: Ingram, Wesley W
Cc: Morgan, Ted M; Linda Good; Lyndee Songer
Subject: PLU Pierce Canyon 20-24-30 USA 1H
Attachments: PLU Pierce Canyon 20-24-30 USA 1H- 3stagejob.pdf

Wesley,

Last week I spoke with you and Ted Morgan on the phone because we had to top out our cement behind on 8-5/8" intermediate casing for the PLU Pierce Canyon 20-24-30 USA 1H. We agreed to bring cement to surface on our production casing to help ensure isolation and protection of water zones. Please see the attached proposal for a 3 stage cement job to bring cement to surface.

This is the same setup we run for every well with the exception the we added another DV tool 100' inside of our 8-5/8" casing. We will use the third stage to make sure we bring cement to surface.

We would appreciate your approval of this plan ASAP. This well has drilled very quickly and we will TD and be ready to cement as early as Wednesday of this week.

Thank you,

Chris Gray

Chesapeake Energy
Drilling Engineer- Permian District
Office: (405) 935-4346
Cell: (405) 301-6515
Fax: (405) 849-4346
Email: chris.gray@chk.com

This email (and attachments if any) is intended only for the use of the individual or entity to which it is addressed and may contain information that is privileged, confidential and exempt from disclosure under applicable law. If the reader of this email is not the intended recipient, or the employee or agent responsible for delivering this message to the intended recipient, you are hereby notified that any dissemination, distribution or copying of this communication is strictly prohibited. If you have received this communication in error, please notify the sender immediately by return email and destroy all copies of the email (and attachments if any).

Morgan, Ted M

From: Chris Gray <Chris.Gray@chk.com>
Sent: Tuesday, January 17, 2012 10:13 AM
To: Morgan, Ted M
Subject: 3 stage sundry
Attachments: 3160-5_Sundry_(Cementing Change)_2012-1-17.pdf

Ted,

Please find the attached sundry as we discussed.

Thank you,

Chris Gray

Chesapeake Energy
Drilling Engineer- Permian District
Office: (405) 935-4346
Cell: (405) 301-6515
Fax: (405) 849-4346
Email: chris.gray@chk.com

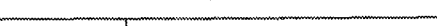
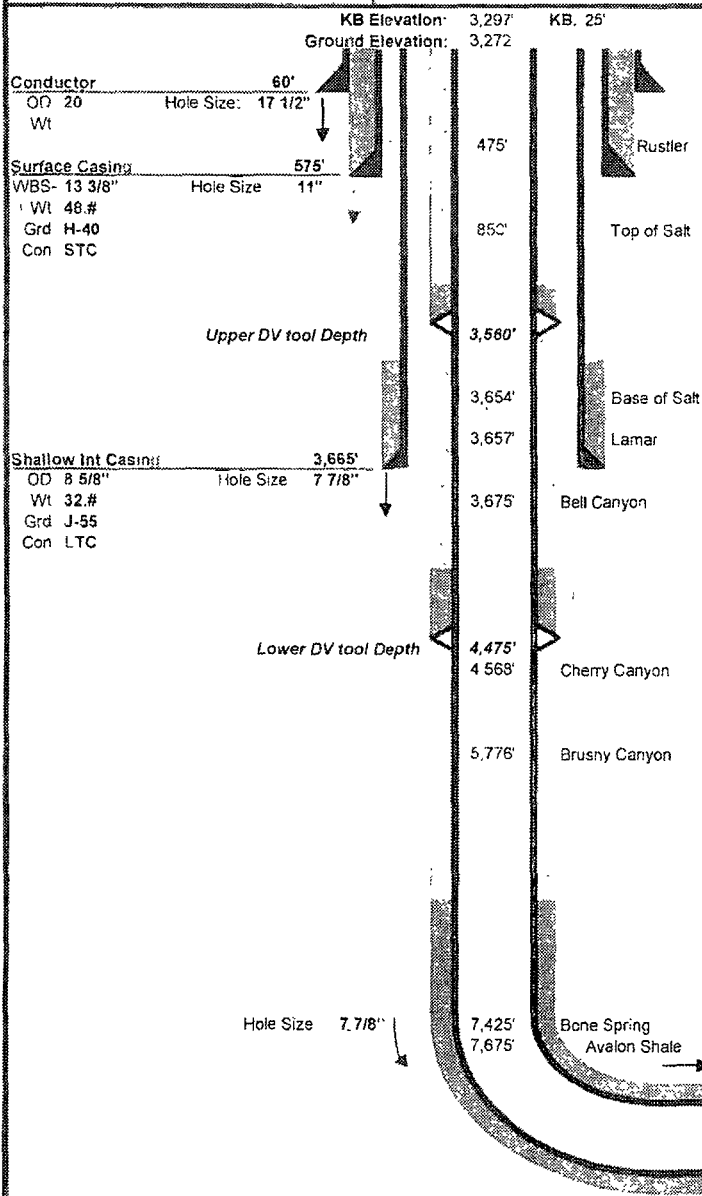
This email (and attachments if any) is intended only for the use of the individual or entity to which it is addressed, and may contain information that is privileged, confidential and exempt from disclosure under applicable law. If the reader of this email is not the intended recipient or the employee or agent responsible for delivering this message to the intended recipient, you are hereby notified that any dissemination, distribution or copying of this communication is strictly prohibited. If you have received this communication in error, please notify the sender immediately by return email and destroy all copies of the email (and attachments if any).

Drilling Engineer: Chris Gray
Superintendent: Daniel Gipson
Geologist: Chris Persellin

Well Name: PLU Pierce Canyon 20-24-30 USA 1H

Drilling Rig. Patterson 62

Proposal for 3 stage cement job to bring cement to surface in annulus of production casing

[illegible][illegible][illegible][illegible]

**PLU Pierce Canyon 20-24-30 USA 1H
30-015-39692
Chesapeake Agent for BOPCO
January 17, 2012
Conditions of Approval**

1. The minimum required fill of cement behind the 5-1/2 inch production casing is:

- a. First stage to DV tool - cement to circulate. If cement does not circulate, contact the appropriate BLM office before proceeding with second stage cement job. Operator should have plans as to how they will achieve circulation on the next stage.**
- b. Second stage to DV tool - cement to circulate. The operator's request for variance to set the second DV tool above the intermediate casing shoe is approved. However, if cement does not circulate, the third stage shall not be pumped until the operator confirms the top of cement on the second stage and receives approval from the BLM to pump the third stage.**
- c. Third stage - cement to circulate to surface. If cement does not circulate, operator to contact the appropriate BLM office.**