

DISTRICT I
1825 N. French Dr., Hobbs, NM 88240

DISTRICT II
1901 W. Grand Avenue, Artesia, NM 88210

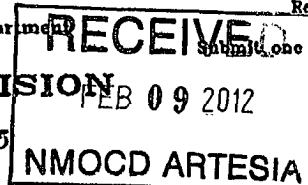
DISTRICT III
1000 Rio Brazos Rd., Aztec, NM 87410

DISTRICT IV
1220 S. St. Francis Dr., Santa Fe, NM 87505

State of New Mexico
Energy, Minerals and Natural Resources Department

Form C-102
Revised July 18, 2010
Submit one copy to appropriate District Office

OIL CONSERVATION DIVISION
1220 South St. Francis Dr.
Santa Fe, New Mexico 87505



WELL LOCATION AND ACREAGE DEDICATION PLAT

☐ AMENDED REPORT

API Number 30015-39025	Pool Code 5200	Pool Name Benson; Bone Spring
Property Code 38624	Property Name CRESCENT HALE "12" FEDERAL	Well Number 1
OGRIID No. 162683	Operator Name CIMAREX ENERGY CO. OF COLORADO	Elevation 3467'

Surface Location

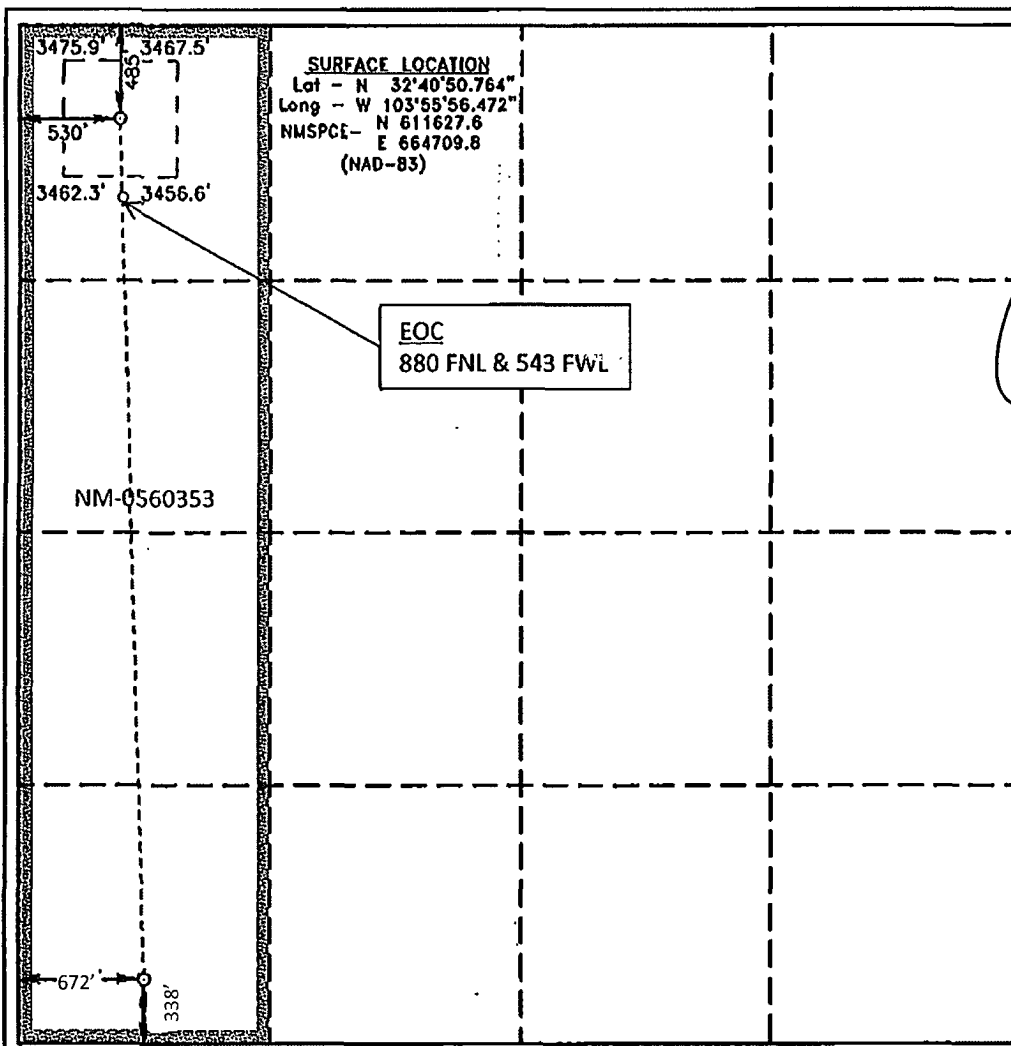
UL or lot No.	Section	Township	Range	Lot Idn	Feet from the	North/South line	Feet from the	East/West line	County
D	12	19	30		485	NORTH	530	WEST	EDDY

Bottom Hole Location If Different From Surface

UL or lot No.	Section	Township	Range	Lot Idn	Feet from the	North/South line	Feet from the	East/West line	County
M	12	19	30		338	SOUTH	672	WEST	EDDY

Dedicated Acres 160	Joint or Infill	Consolidation Code	Order No.
-------------------------------	-----------------	--------------------	-----------

NO ALLOWABLE WILL BE ASSIGNED TO THIS COMPLETION UNTIL ALL INTERESTS HAVE BEEN CONSOLIDATED OR A NON-STANDARD UNIT HAS BEEN APPROVED BY THE DIVISION



OPERATOR CERTIFICATION

I hereby certify that the information contained herein is true and complete to the best of my knowledge and belief, and that this organization either owns a working interest or unleased mineral interest in the land including the proposed bottom hole location or has a right to drill this well at this location pursuant to a contract with an owner of such a mineral or working interest, or to a voluntary pooling agreement or a compulsory pooling order heretofore entered by the division.

[Signature] 2/8/2012
Signature Date
Terri Stathem

Printed Name
tstathem@cimarex.com
Email Address

SURVEYOR CERTIFICATION

I hereby certify that the well location shown on this plat was plotted from field notes of actual surveys made by me or under my supervision, and that the same is true and correct to the best of my belief.

SEPTEMBER 7 2010
Date Surveyed
Signature & Seal of Professional Surveyor
[Signature]
Professional Surveyor No. 7977

Certificate No. Gary L. Jones 7977
BASIN SURVEYS 23362