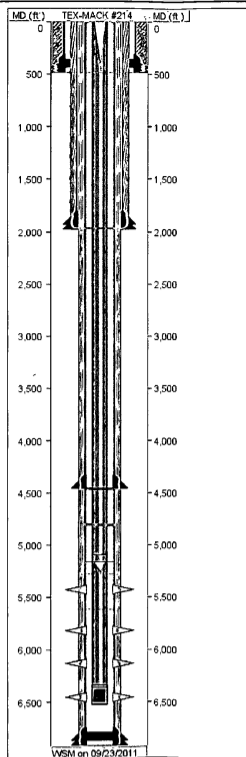


Well ID: 30-015-38367

Well Name: TEX-MACK #214

Event#: 2.00

Report Dates: 09/23/2011



PIPE SPECIFICATION

STRING NAME	SECTION NAME	JOINT COUNT	START DEPTH	END DEPTH	LENGTH	OD SIZE	ID SIZE	WT GRDNT	GRD	CONN
SURFACE	GUIDE SHOE		481.84	483.00	1.16					
SURFACE	CASING	1	437.62	481.84	44.22	13.38	12.71	48.0	H-40	STC
SURFACE	FLOW COUPLING		437.62	437.62	0.00					
SURFACE	CASING	10	-3.66	437.62	441.28	13.38	12.71	48.0	H-40	STC
PRODUCTION	FLOAT SHOE		6910.52	6912.00	1.48					
PRODUCTION	CASING	1	6866.09	6910.52	44.43	5.50	4.89	17.0	J-55	LTC
PRODUCTION	FLOAT COLLAR		6864.53	6866.09	1.56					
PRODUCTION	CASING	54	4467.17	6864.53	2397.36	5.50	4.89	17.0	J-55	LTC
PRODUCTION	MARKER JOINT	1	4452.38	4467.17	14.79	5.50	4.89	17.0	J-55	LTC
PRODUCTION	CASING	100	11.93	4452.38	4440.45	5.50	4.89	17.0	J-55	LTC
PRODUCTION	LANDING JOINT		-3.80	11.93	15.73					
TUBING	BULL PLUG		6517.00	6517.70	0.70	2.88	2.44	6.5	J-55	
TUBING	MUD ANCHOR	5	6353.93	6517.00	163.07	2.88	2.44	6.5	J-55	
TUBING	PUMP BARREL		6334.63	6353.93	19.30	2.88	2.44	6.5	J-55	
TUBING	SEAT NIPPLE		6333.83	6334.63	0.80	2.88	2.23	6.5	SEATIN	
TUBING	TUBING	37	5159.49	6333.83	1174.34	2.88	2.44	6.5	J-55	
TUBING	TUBING ANCHOR		5156.49	5159.49	3.00	5.50	2.44	17.0	TUBING	
TUBING	TUBING	2	5091.23	5156.49	65.26	2.88	2.44	6.5	J-55	
TUBING	PUP JOINT		5089.23	5091.23	2.00	2.88	2.44	6.5	J-55	
TUBING	TUBING	160	0.00	5089.23	5089.23	2.88	2.44	6.5	J-55	
INTERMEDIATE	FLOAT SHOE		1970.91	1972.00	1.09					
INTERMEDIATE	CASING	1	1926.93	1970.91	43.98	8.63	7.92	32.0	J-55	LTC
INTERMEDIATE	FLOAT COLLAR		1925.24	1926.93	1.69					
INTERMEDIATE	CASING	44	-3.78	1925.24	1929.02	8.63	7.92	32.0	J-55	LTC

CEMENTING

STRING NAME	STAGE #	LEAD TOP (est) (ft)	LEAD TOP (ver) (ft)	TAIL TOP (est) (ft)	TAIL TOP (ver) (ft)
SURFACE	1				
PRODUCTION	1				
INTERMEDIATE	1				

BHA STRING

DRILL EQUIP CODE	DESCRIPTION	LENGTH	OD SIZE	ID SIZE
------------------	-------------	--------	---------	---------

PERFORATION

ZONE	JOB REPORT DATE	ZONE NAME	TOP DEPTH	BOTTOM DEPTH	HOLE SIZE	PEN SIZE	SQUEEZED
1	09/14/2011	LOWER BLINEBRY	6350.00	6550.00	0.21	18.50	N
2	09/15/2011	MIDDLE BLINEBRY	6000.00	6250.00	0.21	18.50	N
3	09/15/2011	UPPER BLINEBRY	5710.00	5910.00	0.21	18.50	N

Well ID: 30-015-38367

Well Name: TEX-MACK #214

Event#: 2.00

Report Dates: 09/23/2011

PERFORATION							
ZONE	JOB REPORT DATE	ZONE NAME	TOP DEPTH	BOTTOM DEPTH	HOLE SIZE	PEN SIZE	SQUEEZED
4	09/15/2011	PADDOCK	5300.00	5550.00	0.21	18.50	N