

District I
1625 N. French Dr., Hobbs, NM 88240
District II
1301 W. Grand Avenue, Artesia, NM 88210
District III
1000 Rio Brazos Rd., Aztec, NM 87410
District IV
1220 S. St. Francis Dr., Santa Fe, NM 87505

State of New Mexico
Energy, Minerals & Natural Resources Department
OIL CONSERVATION DIVISION
1220 South St. Francis Dr.
Santa Fe, NM 87505

Form C-102
Revised October 15, 2009
Submit one copy to appropriate
District Office
☐ AMENDED REPORT

WELL LOCATION AND ACREAGE DEDICATION PLAT

1 API Number 30-015-40107		2 Pool Code 40299		3 Pool Name LOST TANK; DELAWARE	
4 Property Code 39132		5 Property Name BIG ARISTOTLE 27 STATE			6 Well Number 2H
7 OGRID No. 6137		8 Operator Name DEVON ENERGY PRODUCTION COMPANY, L.P.			9 Elevation 3492.2

10 Surface Location

UL or lot no.	Section	Township	Range	Lot Idn	Feet from the	North/South line	Feet from the	East/West line	County
A	34	21 S	31 E		660	NORTH	690	EAST	EDDY

11 Bottom Hole Location If Different From Surface

UL or lot no.	Section	Township	Range	Lot Idn	Feet from the	North/South line	Feet from the	East/West line	County
A	27	21 S	31 E		330	NORTH	660	EAST	EDDY

12 Dedicated Acres 160	13 Joint or Infill	14 Consolidation Code	15 Order No.
----------------------------------	--------------------	-----------------------	--------------

No allowable will be assigned to this completion until all interests have been consolidated or a non-standard unit has been approved by the division.

<p>NW CORNER SEC. 27 LAT. = 32.4568508°N LONG. = 103.7742689°W NMSP EAST (FT) N = 530384.76 E = 713777.17</p> <p>SECTION CORNER LAT. = 32.4423277°N LONG. = 103.7742711°W NMSP EAST (FT) N = 525101.25 E = 713804.14</p> <p>SW CORNER SEC. 34 LAT. = 32.4278120°N LONG. = 103.7742753°W NMSP EAST (FT) N = 519820.43 E = 713830.48</p>		<p>NE CORNER SEC. 27 LAT. = 32.4568370°N LONG. = 103.7571414°W NMSP EAST (FT) N = 530407.84 E = 719060.11</p> <p>SECTION CORNER LAT. = 32.4423165°N LONG. = 103.7571513°W NMSP EAST (FT) N = 525125.24 E = 719085.58</p> <p>SE CORNER SEC. 34 LAT. = 32.4278020°N LONG. = 103.7571637°W NMSP EAST (FT) N = 519844.84 E = 719110.23</p>	
<p>BOTTOM OF HOLE LAT. = 32.4559328°N LONG. = 103.7592903°W NMSP EAST (FT) N = 530075.32 E = 718399.06</p> <p>V - 8148</p>		<p>BOTTOM OF HOLE LAT. = 32.4559328°N LONG. = 103.7592903°W NMSP EAST (FT) N = 530075.32 E = 718399.06</p>	
<p>BIG ARISTOTLE 27 STATE 2H ELEV. = 3492.2' LAT. = 32.4405040°N (NAD83) LONG. = 103.7593893°W NMSP EAST (FT) N = 524462.11 E = 718398.70</p>		<p>SURFACE LOCATION</p>	

17 OPERATOR CERTIFICATION

I hereby certify that the information contained herein is true and complete to the best of my knowledge and belief, and that this organization either owns a working interest or released mineral interest in the land including the proposed bottom hole location or has a right to drill this well at this location pursuant to a contract with an owner of such a mineral or working interest, or to a voluntary pooling agreement or a compulsory pooling order heretofore entered by the division

Judy A. Barnett 3/22/12
Signature Date

Printed Name
Judy A. Barnett Regulatory Specialist

18 SURVEYOR CERTIFICATION

I hereby certify that the well location shown on this plat was plotted from field notes of actual surveys made by me or under my supervision and that the same is true and correct to the best of my belief

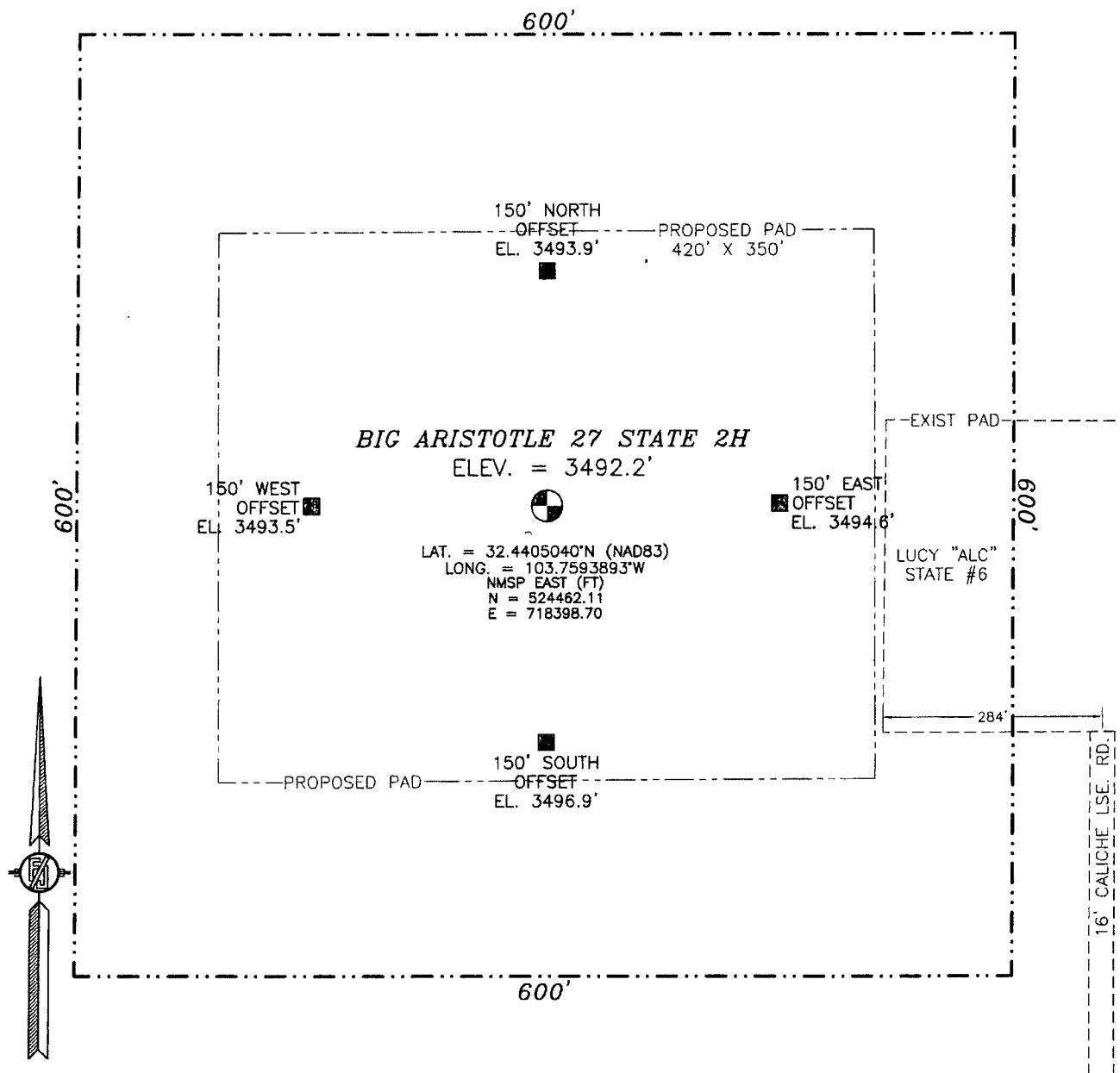
December 2011
Date of Survey
Signature and Seal of Professional Surveyor
Certificate Number 12797
SURVEY NO. 742

RECEIVED

APR 12 2012

NMOCD ARTESIA

SECTION 34, TOWNSHIP 21 SOUTH, RANGE 31 EAST, N.M.P.M.
EDDY COUNTY, STATE OF NEW MEXICO



012 60 120 240

SCALE 1" = 120'

DIRECTIONS TO LOCATION

FROM THE INTERSECTION OF U.S. 62/180 (HOBBS HWY.) AND LOUIS WHITLOCK ROAD TO WIPP SITE AT 0.85 MILES EAST OF MILE MARKER 64 ON U.S. 62/180 GO SOUTH ON LOUIS WHITLOCK ROAD 7.7 MILES TO A CALICHE LEASE RD ON LEFT (EAST) ABOUT 0.7 MILES SOUTH OF MILE MARKER 6 GO EAST ON CALICHE RD 0.35 MILES TO A CALICHE LEASE ROAD ON THE LEFT (NORTH) GO NORTH ON CALICHE ROAD 0.8 MILES SITE IS WEST OF EXISTING PAD (LUCY "ALC" STATE #6)

DEVON ENERGY PRODUCTION COMPANY, L.P.

BIG ARISTOTLE 27 STATE 2H

LOCATED 660 FT. FROM THE NORTH LINE
AND 690 FT. FROM THE EAST LINE OF
SECTION 34, TOWNSHIP 21 SOUTH,
RANGE 31 EAST, N.M.P.M.
EDDY COUNTY, STATE OF NEW MEXICO

DECEMBER 18, 2011

SURVEY NO. 742

MADRON SURVEYING, INC. 301 SOUTH CANAL (575) 234-3341 CARLSBAD, NEW MEXICO