

30-015-39929

Mewbourne Oil Co

Eddy County, New Mexico

Section 2 - 19S-29E

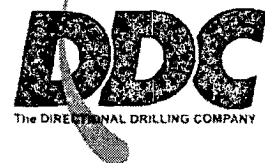
Zircon 2 LI State #1H

Wellbore #1

Survey: MWD

DDC Survey Report

07 May, 2012



DDC
Survey Report



Company: Mewbourne Oil Co
 Project: Eddy County, New Mexico
 Site: Section 2 - 19S-29E
 Well: Zircon 2 LI State #1H
 Wellbore: Wellbore #1
 Design: Wellbore #1

Local Co-ordinate Reference: Well Zircon 2 LI State #1H
 TVD Reference: GL 3385 + 20' LB @ 3405:0usft (Patterson #46)
 MD Reference: GL 3385 + 20' LB @ 3405:0usft (Patterson #46)
 North Reference: Grid
 Survey Calculation Method: Minimum Curvature
 Database: EDM 5000 1 Single User Db

| | | | |
|-------------|--------------------------------------|---------------|----------------|
| Project | Eddy County, New Mexico | | |
| Map System: | US State Plane 1927 (Exact solution) | System Datum: | Mean Sea Level |
| Geo Datum: | NAD 1927 (NADCON CONUS) | | |
| Map Zone: | New Mexico East 3001 | | |

Site: Section 2 - 19S-29E

Site Position: Northing: 614,067.93 usft Latitude: 32° 41' 16.287 N
 From: Map Easting: 586,389.19 usft Longitude: 104° 3' 9.136 W
 Position Uncertainty: 0.0 usft Slot Radius: 13-3/16 " Grid Convergence: 0.15 °

Well: Zircon 2 LI State #1H

Well Position: +N/-S 0.0 usft Northing: 614,067.93 usft Latitude: 32° 41' 16.287 N
 +E/-W 0.0 usft Easting: 586,389.19 usft Longitude: 104° 3' 9.136 W
 Position Uncertainty: 0.0 usft Wellhead Elevation: usft Ground Level: 3,385.0 usft

Wellbore: Wellbore #1

Magnetics: Model Name: IGRF2010 Sample Date: 2/23/2012 Declination (°): 7.76 Dip Angle (°): 60.52 Field Strength (nT): 48,773

Design: Wellbore #1

Audit Notes:

Version: 1.0 Phase: ACTUAL Tie On Depth: 0.0

Vertical Section: Depth From (TVD) (usft) +N/-S (usft) +E/-W (usft) Direction (°)

0.0 0.0 0.0 88.57

Survey Program Date: 5/7/2012

| From (usft) | To (usft) | Survey (Wellbore) | Tool Name | Description |
|-------------|-----------|--------------------|-------------|----------------|
| 100.0 | 7,280.0 | GYRO (Wellbore #1) | Good_gyro | Good Gyro |
| 7,380.0 | 12,504.0 | MWD (Wellbore #1) | MWD default | MWD - Standard |

Survey

| Measured Depth (usft) | Inclination (°) | Azimuth (°) | Vertical Depth (usft) | +N/-S (usft) | +E/-W (usft) | Vertical Section (usft) | Dogleg Rate (°/100usft) | Build Rate (°/100usft) | Turn Rate (°/100usft) |
|-------------------------------|-----------------|-------------|-----------------------|--------------|--------------|-------------------------|-------------------------|------------------------|-----------------------|
| Tie In @ 7280' MD / 7278' TVD | | | | | | | | | |
| 7,280.0 | 0.65 | 156.88 | 7,277.7 | 58.2 | -123.5 | -122.0 | 0.00 | 0.00 | 0.00 |
| 7,380.0 | 1.10 | 118.30 | 7,377.7 | 57.2 | -122.4 | -120.9 | 0.72 | 0.45 | -38.58 |
| 7,412.0 | 1.10 | 130.60 | 7,409.6 | 56.9 | -121.9 | -120.4 | 0.74 | 0.00 | 38.44 |
| 7,444.0 | 0.80 | 135.40 | 7,441.6 | 56.5 | -121.5 | -120.1 | 0.97 | -0.94 | 15.00 |
| 7,475.0 | 1.30 | 123.70 | 7,472.6 | 56.2 | -121.1 | -119.6 | 1.75 | 1.61 | -37.74 |
| 7,507.0 | 3.70 | 98.90 | 7,504.6 | 55.8 | -119.7 | -118.3 | 8.06 | 7.50 | -77.50 |
| 7,539.0 | 7.00 | 92.30 | 7,536.5 | 55.6 | -116.8 | -115.4 | 10.47 | 10.31 | -20.63 |
| 7,570.0 | 10.60 | 90.70 | 7,567.1 | 55.5 | -112.0 | -110.6 | 11.64 | 11.61 | -5.16 |
| 7,602.0 | 14.60 | 89.20 | 7,598.3 | 55.5 | -105.1 | -103.6 | 12.54 | 12.50 | -4.69 |

DDC
Survey Report



Company: Mewbourne Oil Co
 Project: Eddy County, New Mexico
 Site: Section 2 - 19S-29E
 Well: Zircon 2 LI State #1H
 Wellbore: Wellbore #1
 Design: Wellbore #1

Local Co-ordinate Reference: Well Zircon 2 LI State #1H
 TVD Reference: GL 3385 + 20' LB @ 3405 Ousft. (Patterson #46)
 MD Reference: GL 3385 + 20' LB @ 3405 Ousft. (Patterson #46)
 North Reference: Grid
 Survey Calculation Method: Minimum Curvature
 Database: EDM 5000 1 Single User Db

Survey

| Measured Depth (usft) | Inclination (°) | Azimuth (°) | Vertical Depth (usft) | +N/-S (usft) | +E/-W (usft) | Vertical Section (usft) | Dogleg Rate (°/100usft) | Build Rate (°/100usft) | Turn Rate (°/100usft) |
|--|-----------------|-------------|-----------------------|--------------|--------------|-------------------------|-------------------------|------------------------|-----------------------|
| 7.634 0 | 17.80 | 88.40 | 7.629 0 | 55.7 | -96.1 | -94.7 | 10.02 | 10.00 | -2.50 |
| 7.666 0 | 20.90 | 89.20 | 7.659 2 | 55.9 | -85.5 | -84.1 | 9.72 | 9.69 | 2.50 |
| 7.697 0 | 24.20 | 91.10 | 7.687.9 | 55.9 | -73.7 | -72.2 | 10.90 | 10.65 | 6.13 |
| 7.729 0 | 27.60 | 91.60 | 7.716.6 | 55.5 | -59.7 | -58.3 | 10.65 | 10.63 | 1.56 |
| 7.761 0 | 31.00 | 91.80 | 7.744.5 | 55.1 | -44.0 | -42.6 | 10.63 | 10.63 | 0.63 |
| 7.792 0 | 34.60 | 90.80 | 7.770.6 | 54.7 | -27.2 | -25.9 | 11.74 | 11.61 | -3.23 |
| 7.824 0 | 38.60 | 89.90 | 7.796.3 | 54.6 | -8.2 | -6.8 | 12.61 | 12.50 | -2.81 |
| 7.855 0 | 42.60 | 88.50 | 7.819.8 | 54.9 | 12.0 | 13.4 | 13.23 | 12.90 | -4.52 |
| Crossed Hard Line @ 7865' MD / 7827' TVD | | | | | | | | | |
| 7.865.0 | 43.72 | 88.08 | 7.827.1 | 55.1 | 18.8 | 20.2 | 11.60 | 11.23 | -4.24 |
| 7.887.0 | 46.20 | 87.20 | 7.842.7 | 55.7 | 34.4 | 35.7 | 11.60 | 11.26 | -3.98 |
| 7.919.0 | 49.90 | 86.70 | 7.864.1 | 57.0 | 58.1 | 59.5 | 11.62 | 11.56 | -1.56 |
| 7.950 0 | 53.60 | 87.00 | 7.883.2 | 58.3 | 82.4 | 83.9 | 11.96 | 11.94 | 0.97 |
| 7.982 0 | 57.60 | 87.10 | 7.901.3 | 59.7 | 108.8 | 110.2 | 12.50 | 12.50 | 0.31 |
| 8.014.0 | 61.50 | 88.90 | 7.917.5 | 60.6 | 136.4 | 137.8 | 13.12 | 12.19 | 5.63 |
| 8.046.0 | 66.40 | 88.90 | 7.931.6 | 61.2 | 165.1 | 166.6 | 15.31 | 15.31 | 0.00 |
| 8.077 0 | 72.00 | 89.10 | 7.942.6 | 61.7 | 194.1 | 195.5 | 18.07 | 18.06 | 0.65 |
| 8.113.0 | 78.40 | 88.90 | 7.951.8 | 62.3 | 228.8 | 230.3 | 17.79 | 17.78 | -0.56 |
| 8.172 0 | 85.80 | 89.10 | 7.959.9 | 63.3 | 287.2 | 288.7 | 12.55 | 12.54 | 0.34 |
| 8.203 0 | 86.60 | 93.30 | 7.961.9 | 62.7 | 318.1 | 319.6 | 13.76 | 2.58 | 13.55 |
| 8.234.0 | 87.70 | 88.90 | 7.963.5 | 62.1 | 349.1 | 350.5 | 14.61 | 3.55 | -14.19 |
| 8.266 0 | 87.90 | 88.80 | 7.964.7 | 62.7 | 381.1 | 382.5 | 0.70 | 0.63 | -0.31 |
| 8.298.0 | 89.10 | 88.60 | 7.965.5 | 63.4 | 413.0 | 414.5 | 3.80 | 3.75 | -0.63 |
| 8.330 0 | 89.20 | 88.00 | 7.966.0 | 64.4 | 445.0 | 446.5 | 1.90 | 0.31 | -1.88 |
| 8.362 0 | 89.20 | 87.40 | 7.966.5 | 65.7 | 477.0 | 478.5 | 1.87 | 0.00 | -1.88 |
| 8.393 0 | 89.50 | 87.20 | 7.966.8 | 67.1 | 508.0 | 509.5 | 1.16 | 0.97 | -0.65 |
| 8.425.0 | 89.20 | 88.20 | 7.967.2 | 68.4 | 539.9 | 541.5 | 3.26 | -0.94 | 3.13 |
| 8.457.0 | 89.10 | 88.40 | 7.967.7 | 69.4 | 571.9 | 573.5 | 0.70 | -0.31 | 0.63 |
| 8.489.0 | 89.00 | 90.10 | 7.968.2 | 69.8 | 603.9 | 605.5 | 5.32 | -0.31 | 5.31 |
| 8.553.0 | 88.80 | 89.30 | 7.969.4 | 70.1 | 667.9 | 669.4 | 1.29 | -0.31 | -1.25 |
| 8.616 0 | 88.60 | 89.50 | 7.970.8 | 70.8 | 730.9 | 732.4 | 0.45 | -0.32 | 0.32 |
| 8.680.0 | 87.90 | 89.30 | 7.972.8 | 71.5 | 794.8 | 796.4 | 1.14 | -1.09 | -0.31 |
| 8.743.0 | 88.70 | 90.20 | 7.974.7 | 71.7 | 857.8 | 859.3 | 1.91 | 1.27 | 1.43 |
| 8.807 0 | 88.80 | 90.30 | 7.976.1 | 71.4 | 921.8 | 923.3 | 0.22 | 0.16 | 0.16 |
| 8.871 0 | 88.40 | 90.10 | 7.977.6 | 71.2 | 985.8 | 987.2 | 0.70 | -0.63 | -0.31 |
| 8.934.0 | 88.40 | 89.30 | 7.979.4 | 71.6 | 1,048.7 | 1,050.2 | 1.27 | 0.00 | -1.27 |
| 8.997 0 | 88.30 | 89.00 | 7.981.2 | 72.5 | 1,111.7 | 1,113.2 | 0.50 | -0.16 | -0.48 |
| 9.061 0 | 88.40 | 88.80 | 7.983.0 | 73.7 | 1,175.7 | 1,177.2 | 0.35 | 0.16 | -0.31 |
| 9.124.0 | 88.40 | 88.00 | 7.984.8 | 75.5 | 1,238.6 | 1,240.1 | 1.27 | 0.00 | -1.27 |
| 9.187.0 | 88.40 | 89.00 | 7.986.6 | 77.1 | 1,301.6 | 1,303.1 | 1.59 | 0.00 | 1.59 |
| 9.251 0 | 88.20 | 89.50 | 7.988.5 | 78.0 | 1,365.5 | 1,367.1 | 0.84 | -0.31 | 0.78 |
| 9.314 0 | 88.00 | 88.70 | 7.990.6 | 79.0 | 1,428.5 | 1,430.0 | 1.31 | -0.32 | -1.27 |
| 9.378.0 | 88.40 | 90.30 | 7.992.6 | 79.5 | 1,492.5 | 1,494.0 | 2.58 | 0.63 | 2.50 |

DDC
Survey Report



| | | | |
|-----------|-------------------------|------------------------------|---|
| Company: | Mewbourne Oil Co | Local Co-ordinate Reference: | Well Zircon 2 LJ State #1H |
| Project: | Eddy County, New Mexico | TVD Reference: | GL 3385 + 20' LB @ 3405.0usft (Patterson #46) |
| Site: | Section 2 - 19S-29E | MD Reference: | GL 3385 + 20' LB @ 3405.0usft (Patterson #46) |
| Well: | Zircon 2 LJ State #1H | North Reference: | Grd |
| Wellbore: | Wellbore #1 | Survey Calculation Method: | Minimum Curvature |
| Design: | Wellbore #1 | Database: | EDM 5000.1 Single User Db |

Survey

| Measured Depth (usft) | Inclination (°) | Azimuth (°) | Vertical Depth (usft) | +N/-S (usft) | +E/-W (usft) | Vertical Section (usft) | Dogleg Rate (°/100usft) | Build Rate (°/100usft) | Turn Rate (°/100usft) |
|-----------------------|-----------------|-------------|-----------------------|--------------|--------------|-------------------------|-------------------------|------------------------|-----------------------|
| 9.441 0 | 88.50 | 89.80 | 7.994 3 | 79.5 | 1.555 4 | 1.556 9 | 0.81 | 0.16 | -0.79 |
| 9.505 0 | 88.30 | 89.30 | 7.996 1 | 80.0 | 1.619.4 | 1.620 9 | 0.84 | -0.31 | -0.78 |
| 9.568 0 | 88.40 | 87.90 | 7.997.9 | 81.5 | 1.682.4 | 1.683 9 | 2.23 | 0.16 | -2.22 |
| 9.632 0 | 88.90 | 89.30 | 7.999 4 | 83.1 | 1.746.3 | 1.747 9 | 2.32 | 0.78 | 2.19 |
| 9.695 0 | 88.10 | 90.60 | 8.001 0 | 83.1 | 1.809.3 | 1.810.8 | 2.42 | -1.27 | 2.06 |
| 9.758 0 | 87.50 | 89.60 | 8.003.4 | 83.0 | 1.872.3 | 1.873.7 | 1.85 | -0.95 | -1.59 |
| 9.821.0 | 88.00 | 90.00 | 8.005 9 | 83.2 | 1.935.2 | 1.936 7 | 1.02 | 0.79 | 0.63 |
| 9.885 0 | 88.00 | 91.20 | 8.008 1 | 82.6 | 1.999.2 | 2.000 6 | 1.87 | 0.00 | 1.88 |
| 9.948.0 | 88.10 | 91.80 | 8.010 3 | 80.9 | 2.062.1 | 2.063.5 | 0.96 | 0.16 | 0.95 |
| 10.012.0 | 87.50 | 91.50 | 8.012.7 | 79.1 | 2.126.0 | 2.127.3 | 1.05 | -0.94 | -0.47 |
| 10.075.0 | 88.20 | 91.40 | 8.015 1 | 77.5 | 2.189.0 | 2.190.2 | 1.12 | 1.11 | -0.16 |
| 10.138.0 | 88.00 | 91.40 | 8.017.2 | 75.9 | 2.251.9 | 2.253.1 | 0.32 | -0.32 | 0.00 |
| 10.202 0 | 88.70 | 91.90 | 8.019.0 | 74.1 | 2.315.9 | 2.317 0 | 1.34 | 1.09 | 0.78 |
| 10.265 0 | 88.70 | 91.40 | 8.020.5 | 72.3 | 2.378.8 | 2.379 9 | 0.79 | 0.00 | -0.79 |
| 10.329 0 | 88.40 | 90.00 | 8.022.1 | 71.5 | 2.442.8 | 2.443.8 | 2.24 | -0.47 | -2.19 |
| 10.393 0 | 88.00 | 89.30 | 8.024.1 | 71.9 | 2.506.8 | 2.507 8 | 1.26 | -0.63 | -1.09 |
| 10.457 0 | 88.80 | 90.10 | 8.025.9 | 72.2 | 2.570.7 | 2.571.7 | 1.77 | 1.25 | 1.25 |
| 10.520 0 | 88.80 | 89.60 | 8.027.2 | 72.4 | 2.633.7 | 2.634 7 | 0.79 | 0.00 | -0.79 |
| 10.584.0 | 88.70 | 89.30 | 8.028.6 | 73.0 | 2.697.7 | 2.698 7 | 0.49 | -0.16 | -0.47 |
| 10.648 0 | 88.20 | 88.70 | 8.030.3 | 74.1 | 2.761.7 | 2.762 7 | 1.22 | -0.78 | -0.94 |
| 10.711.0 | 87.90 | 88.20 | 8.032.5 | 75.8 | 2.824.6 | 2.825 6 | 0.93 | -0.48 | -0.79 |
| 10.774.0 | 87.80 | 87.10 | 8.034.8 | 78.4 | 2.887.5 | 2.888.6 | 1.75 | -0.16 | -1.75 |
| 10.838 0 | 88.30 | 89.00 | 8.037.0 | 80.6 | 2.951.4 | 2.952 5 | 3.07 | 0.78 | 2.97 |
| 10.902 0 | 89.00 | 91.30 | 8.038.5 | 80.4 | 3.015.4 | 3.016 5 | 3.78 | 1.09 | 3.59 |
| 10.965.0 | 89.10 | 90.80 | 8.039.6 | 79.3 | 3.078.4 | 3.079 4 | 0.81 | 0.16 | -0.79 |
| 11.028 0 | 88.70 | 90.20 | 8.040.8 | 78.7 | 3.141.4 | 3.142 4 | 1.14 | -0.63 | -0.95 |
| 11.092.0 | 88.80 | 89.20 | 8.042.2 | 79.0 | 3.205.4 | 3.206 3 | 1.57 | 0.16 | -1.56 |
| 11.154 0 | 88.00 | 89.00 | 8.043.9 | 80.0 | 3.267.3 | 3.268.3 | 1.33 | -1.29 | -0.32 |
| 11.218 0 | 87.60 | 88.00 | 8.046.4 | 81.7 | 3.331.3 | 3.332 3 | 1.68 | -0.63 | -1.56 |
| 11.281.0 | 87.50 | 87.10 | 8.049.1 | 84.4 | 3.394.1 | 3.395.2 | 1.44 | -0.16 | -1.43 |
| 11.345 0 | 88.30 | 88.10 | 8.051.4 | 87.1 | 3.458.0 | 3.459.1 | 2.00 | 1.25 | 1.56 |
| 11.409.0 | 88.50 | 88.00 | 8.053.2 | 89.2 | 3.522.0 | 3.523.1 | 0.35 | 0.31 | -0.16 |
| 11.472 0 | 88.40 | 87.50 | 8.054.9 | 91.7 | 3.584.9 | 3.586.1 | 0.81 | -0.16 | -0.79 |
| 11.536.0 | 88.30 | 87.80 | 8.056.7 | 94.3 | 3.648.8 | 3.650.0 | 0.49 | -0.16 | 0.47 |
| 11.600 0 | 87.90 | 90.20 | 8.058.9 | 95.4 | 3.712.8 | 3.714 0 | 3.80 | -0.63 | 3.75 |
| 11.663 0 | 88.00 | 90.70 | 8.061 1 | 95.0 | 3.775.7 | 3.776 9 | 0.81 | 0.16 | 0.79 |
| 11.726 0 | 87.70 | 89.60 | 8.063.5 | 94.8 | 3.838.7 | 3.839 9 | 1.81 | -0.48 | -1.75 |
| 11.790 0 | 88.00 | 88.90 | 8.065 9 | 95.6 | 3.902.6 | 3.903 8 | 1.19 | 0.47 | -1.09 |
| 11.853.0 | 88.00 | 89.20 | 8.068.1 | 96.7 | 3.965.6 | 3.966 8 | 0.48 | 0.00 | 0.48 |
| 11.916.0 | 87.80 | 88.20 | 8.070.4 | 98.1 | 4.028.5 | 4.029.7 | 1.62 | -0.32 | -1.59 |
| 11.979 0 | 88.30 | 90.40 | 8.072.5 | 98.9 | 4.091.5 | 4.092.7 | 3.58 | 0.79 | 3.49 |
| 12.042 0 | 88.80 | 84.40 | 8.074 1 | 101.7 | 4.154.4 | 4.155 6 | 9.55 | 0.79 | -9.52 |
| 12.074 0 | 88.80 | 89.00 | 8.074.8 | 103.6 | 4.186.3 | 4.187 6 | 14.37 | 0.00 | 14.38 |
| 12.106 0 | 87.70 | 90.90 | 8.075.8 | 103.6 | 4.218.3 | 4.219.6 | 6.86 | -3.44 | 5.94 |

DDC
Survey Report



| | | | |
|-----------|-------------------------|------------------------------|---|
| Company: | Mewbourne Oil Co | Local Co-ordinate Reference: | Well Zircon 2 LI State #1H |
| Project: | Eddy County, New Mexico | TVD Reference: | GL 3385 +.20' LB @ 3405.0usft (Patterson #46) |
| Site: | Section 2 - 19S-29E | MD Reference: | GL 3385 + 20' LB @ 3405.0usft (Patterson #46) |
| Well: | Zircon 2 LI State #1H | North Reference: | Grid |
| Wellbore: | Wellbore #1 | Survey Calculation Method: | Minimum Curvature |
| Design: | Wellbore #1 | Database: | EDM-5000 1 Single User Db |

Survey

| Measured Depth (usft) | Inclination (°) | Azimuth (°) | Vertical Depth (usft) | +N/-S (usft) | +E/-W (usft) | Vertical Section (usft) | Dogleg Rate (°/100usft) | Build Rate (°/100usft) | Turn Rate (°/100usft) |
|----------------------------|-----------------|-------------|-----------------------|--------------|--------------|-------------------------|-------------------------|------------------------|-----------------------|
| 12.169 0 | 87.00 | 91.00 | 8 078.7 | 102 5 | 4,281 2 | 4 282.4 | 1 12 | -1,11 | 0 16 |
| 12.232.0 | 88 10 | 90 10 | 8,081 4 | 101.9 | 4,344 1 | 4,345.3 | 2.26 | 1 75 | -1.43 |
| 12.296.0 | 88 00 | 89 40 | 8,083.6 | 102.2 | 4,408 1 | 4,409.3 | 1 10 | -0 16 | -1 09 |
| 12.359.0 | 86 90 | 87 80 | 8,086 4 | 103.8 | 4,471 0 | 4,472 2 | 3 08 | -1.75 | -2.54 |
| 12,422 0 | 87 70 | 87 50 | 8,089.3 | 106.3 | 4,533.9 | 4,535.1 | 1 36 | 1.27 | -0.48 |
| 12,453.0 | 87.80 | 87 20 | 8,090 5 | 107 8 | 4,564 8 | 4,566.1 | 1.02 | 0 32 | -0 97 |
| TD @ 12504' MD / 8093' TVD | | | | | | | | | |
| 12,504 0 | 87 80 | 87 20 | 8,092.5 | 110.3 | 4,615.7 | 4,617.1 | 0.00 | 0.00 | 0.00 |

Survey Annotations

| Measured Depth (usft) | Vertical Depth (usft) | Local Coordinates | | Comment |
|-----------------------|-----------------------|-------------------|--------------|--|
| | | +N/-S (usft) | +E/-W (usft) | |
| 7,280 0 | 7,277 7 | 58 2 | -123 5 | Tie In @ 7280' MD / 7278' TVD |
| 7,865 0 | 7 827 1 | 55 1 | 18 8 | Crossed Hard Line @ 7865' MD / 7827' TVD |
| 12,504 0 | 8,092 5 | 110 3 | 4,615.7 | TD @ 12504' MD / 8093' TVD |

| | | |
|-------------------|--------------------|-------------|
| Checked By: _____ | Approved By: _____ | Date: _____ |
|-------------------|--------------------|-------------|

Company Name: Mewbourne Oil Co
 Zircon 2 LI State #1H
 Eddy County, New Mexico
 Rig: Patterson #46
 Created By: Dina Chance
 Date: 5/20/12

Zircon 2 LI State #1H
 Eddy County New Mexico
 Q120761 & WT-12275

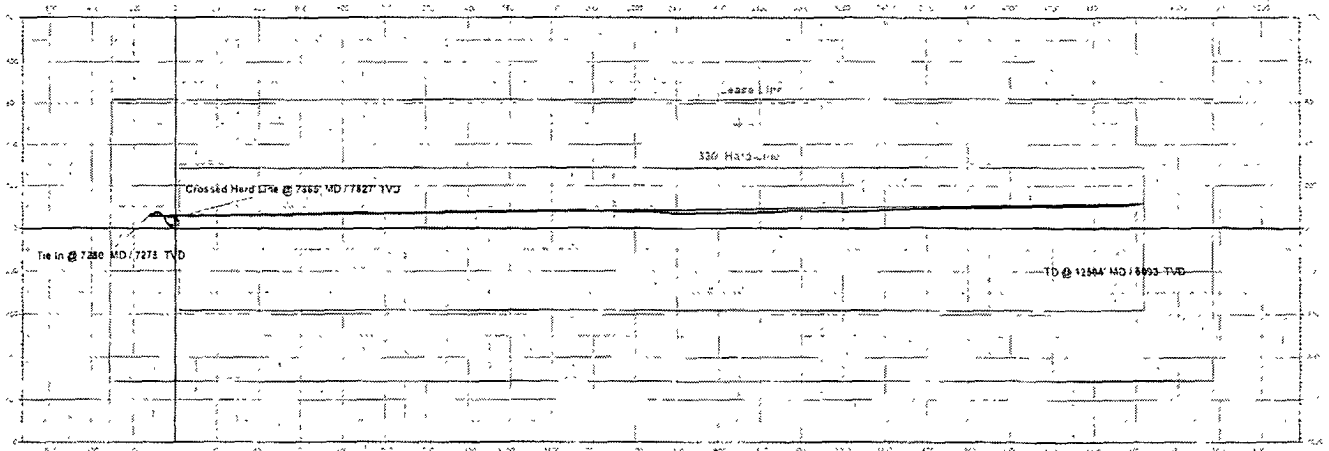
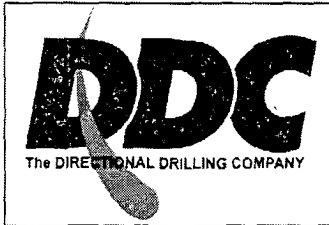
WELL DETAILS: Zircon 2 LI State #1H

Ground Level: 3385.0
 +N-S: 0.0, -E/W: 0.0
 Northing: 614067.92, Easting: 586289.19
 Latitude: 32° 41' 18.297" N, Longitude: 104° 3' 9.135" W

PROJECT DETAILS: Eddy County, New Mexico

Geodetic System: US State Plane 1927 (Exact solution)
 Datum: NAD 1927 (NADCON CONUS)
 Ellipsoid: Clarke 1866
 Zone: Mean Sea Level
 System Datum: New Mexico East 3001

Mewbourne Oil Company

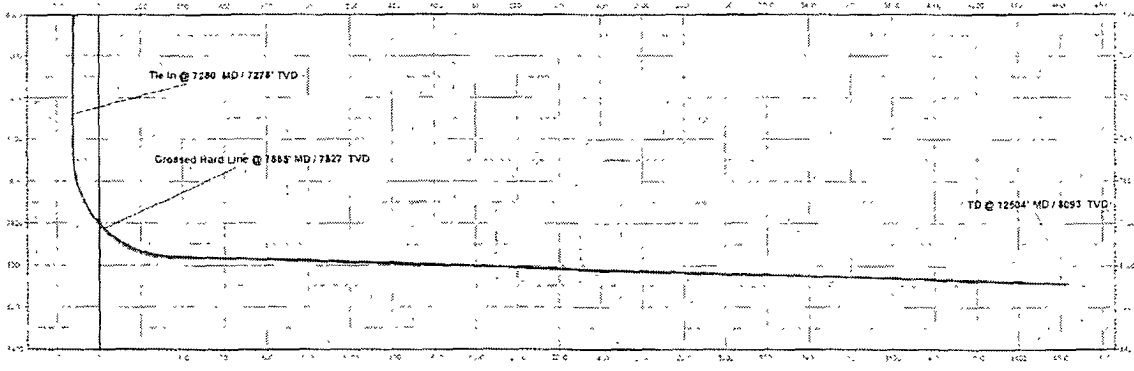


Azimuths to Grid North
 Magnetic North: 7.61°

Magnetic Field
 Strength 48773.3snT
 Dip Angle: 60.52°
 Date: 2/23/2012
 Model: IGRF2010

| DESIGN TARGET DETAILS | | | | | | | |
|---|--------|-------|--------|----------|-----------|-------------------|-------------------|
| Name | MD | +N-S | -E/W | Northing | Easting | Latitude | Longitude |
| Zircon 2 LI State #1H PSHL plan view target center | 8092.0 | 115.6 | 4636.0 | 614129.1 | 587026.80 | 32° 41' 17.328" N | 104° 3' 14.875" W |

| ANNOTATIONS | | | | | | | |
|-------------|-------|--------|--------|--------|--------|----------------|---|
| MD | dc | azi | TVD | +N-S | -E/W | Vertical Curve | Annotation |
| 7280.0 | 0.65 | 156.88 | 7277.7 | 88.2 | -122.5 | -122.5 | Tie In @ 7280 MD / 7278' TVD |
| 7369.0 | 63.72 | -89.05 | 7327.1 | 86.1 | 18.8 | 27.2 | 315.9 Crossed Hard Line @ 7369 MD / 7327' TVD |
| 12584.0 | 57.80 | 87.27 | 8387.6 | 110.31 | 4615.7 | 4615.1 | TD @ 12584 MD / 8693' TVD |



Wellbore Section @ 58 67' (200' 1144')