

DISTRICT I  
1625 N. FRENCH DR., HOBBS, NM 88240

DISTRICT II  
1301 W. GRAND AVENUE, ARTESIA, NM 88210

DISTRICT III  
1000 Rio Brazos Rd., Aztec, NM 87410

DISTRICT IV  
1220 S. ST. FRANCIS DR., SANTA FE, NM 87505

State of New Mexico  
Energy, Minerals and Natural Resources Department

OIL CONSERVATION DIVISION  
1220 SOUTH ST. FRANCIS DR.  
Santa Fe, New Mexico 87505

Form C-102  
Revised JUNE 10, 2003  
Submit to Appropriate District Office  
State Lease - 4 Copies  
Fee Lease - 3 Copies

WELL LOCATION AND ACREAGE DEDICATION PLAT

☐ AMENDED REPORT

API Number 30-015-33854	Pool Code 96070	Pool Name Wildcat;Morrow
Property Code 34487	Property Name CHIEF STATE	Well Number 1
OGRID No. 013837	Operator Name MACK ENERGY CORPORATION	Elevation 4020'

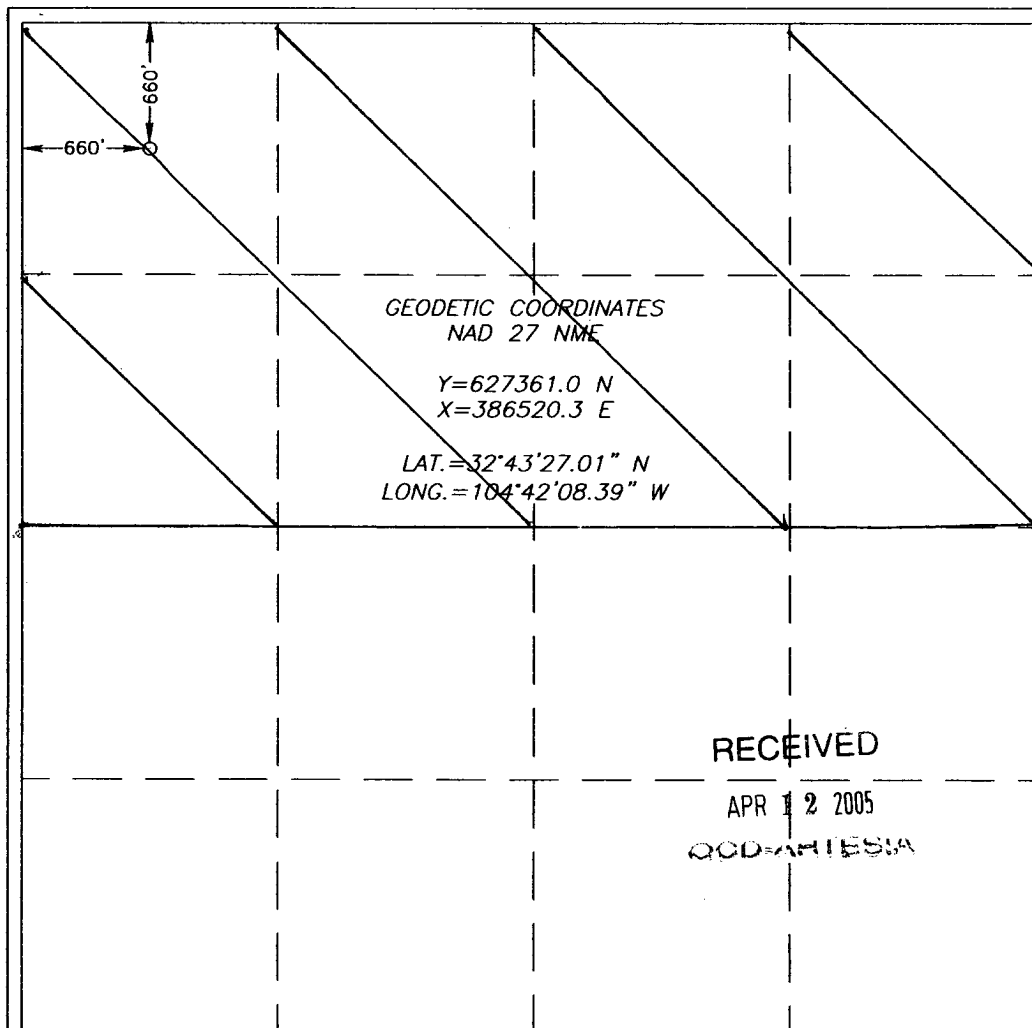
Surface Location

UL or lot No.	Section	Township	Range	Lot Idn	Feet from the	North/South line	Feet from the	East/West line	County
D	28	18-S	23-E		660	NORTH	660	WEST	EDDY

Bottom Hole Location If Different From Surface

UL or lot No.	Section	Township	Range	Lot Idn	Feet from the	North/South line	Feet from the	East/West line	County
Dedicated Acres 320	Joint or Infill	Consolidation Code	Order No.						

NO ALLOWABLE WILL BE ASSIGNED TO THIS COMPLETION UNTIL ALL INTERESTS HAVE BEEN CONSOLIDATED  
OR A NON-STANDARD UNIT HAS BEEN APPROVED BY THE DIVISION



OPERATOR CERTIFICATION

I hereby certify the the information  
contained herein is true and complete to the  
best of my knowledge and belief.

*Jerry W. Sherrell*  
Signature

Jerry W. Sherrell  
Printed Name

Production Clerk  
Title

4/11/2005  
Date

SURVEYOR CERTIFICATION

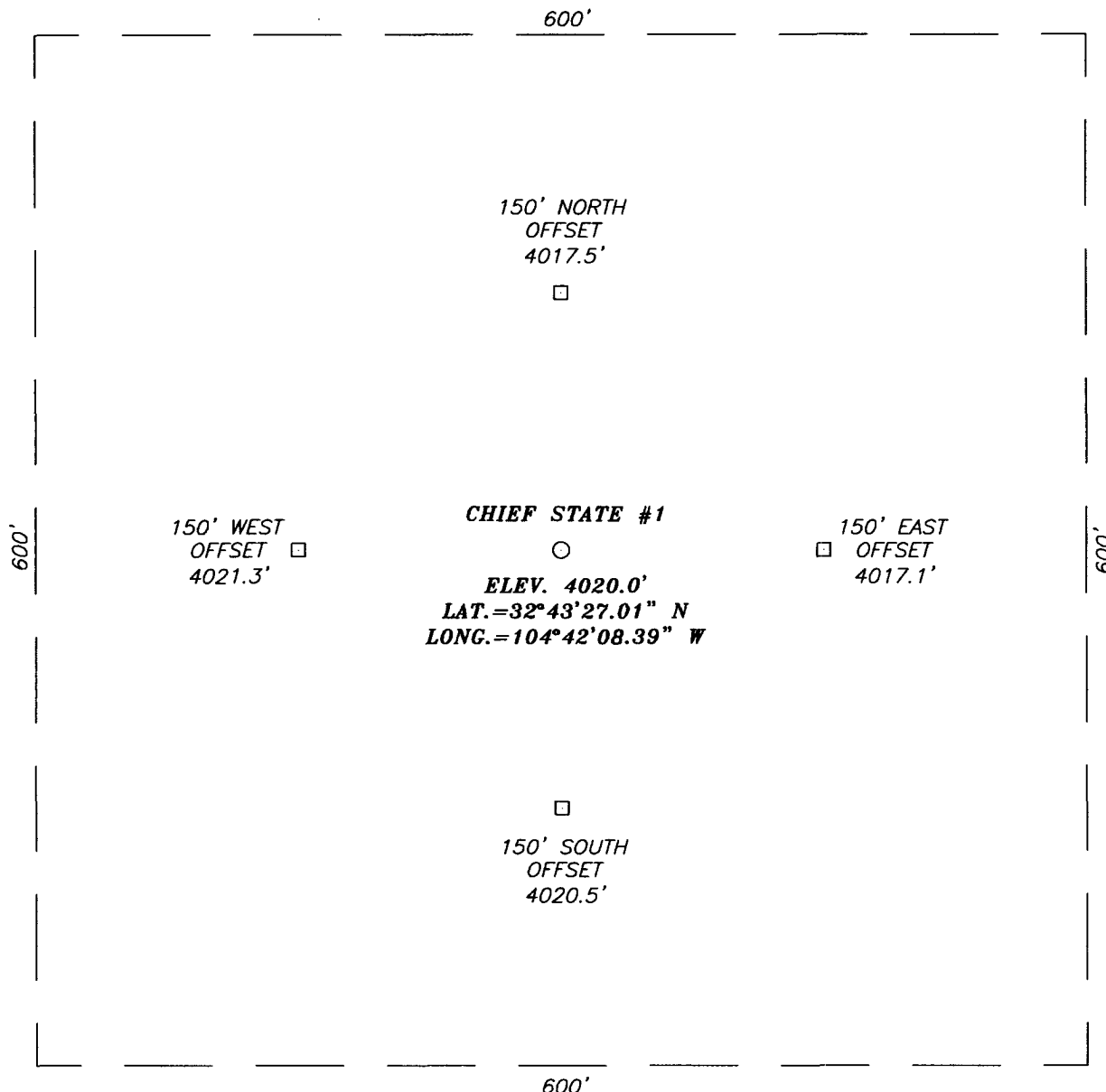
I hereby certify that the well location shown  
on this plat was plotted from field notes of  
actual surveys made by me or under my  
supervision, and that the same is true and  
correct to the best of my belief.

MARCH 25, 2005

Date Surveyed  
Signature & Seal of  
Professional Surveyor

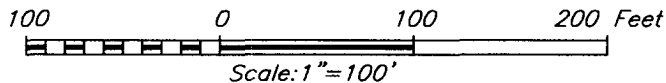
*Cary E. Edson*  
05.11.0451  
Certificate No. 12641

**SECTION 28, TOWNSHIP 18 SOUTH, RANGE 23 EAST, N.M.P.M.,**  
 EDDY COUNTY, NEW MEXICO



**DIRECTIONS TO LOCATION**

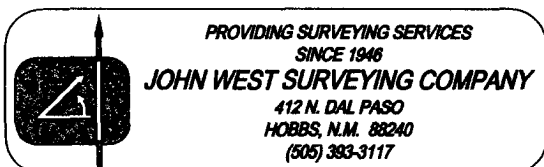
FROM THE INTERSECTION OF ARMSTRONG RD. AND ROCKIN R RED. GO NORTH ON ARMSTRONG RD. APPROX. 3.0 MILES TO GATE ON RIGHT (EAST) SIDE OF ROAD. TURN RIGHT (EAST) AND GO APPROX. 1.4 MILES. TURN RIGHT (SOUTH) ALONG P/L ROAD AND GO APPROX. 0.5 MILES TO GATE. AFTER GATE TURN RIGHT (WEST) AND GO APPROX. 0.2 MILES. THIS LOCATION IS APPROX. 500' SOUTH OF ROAD.



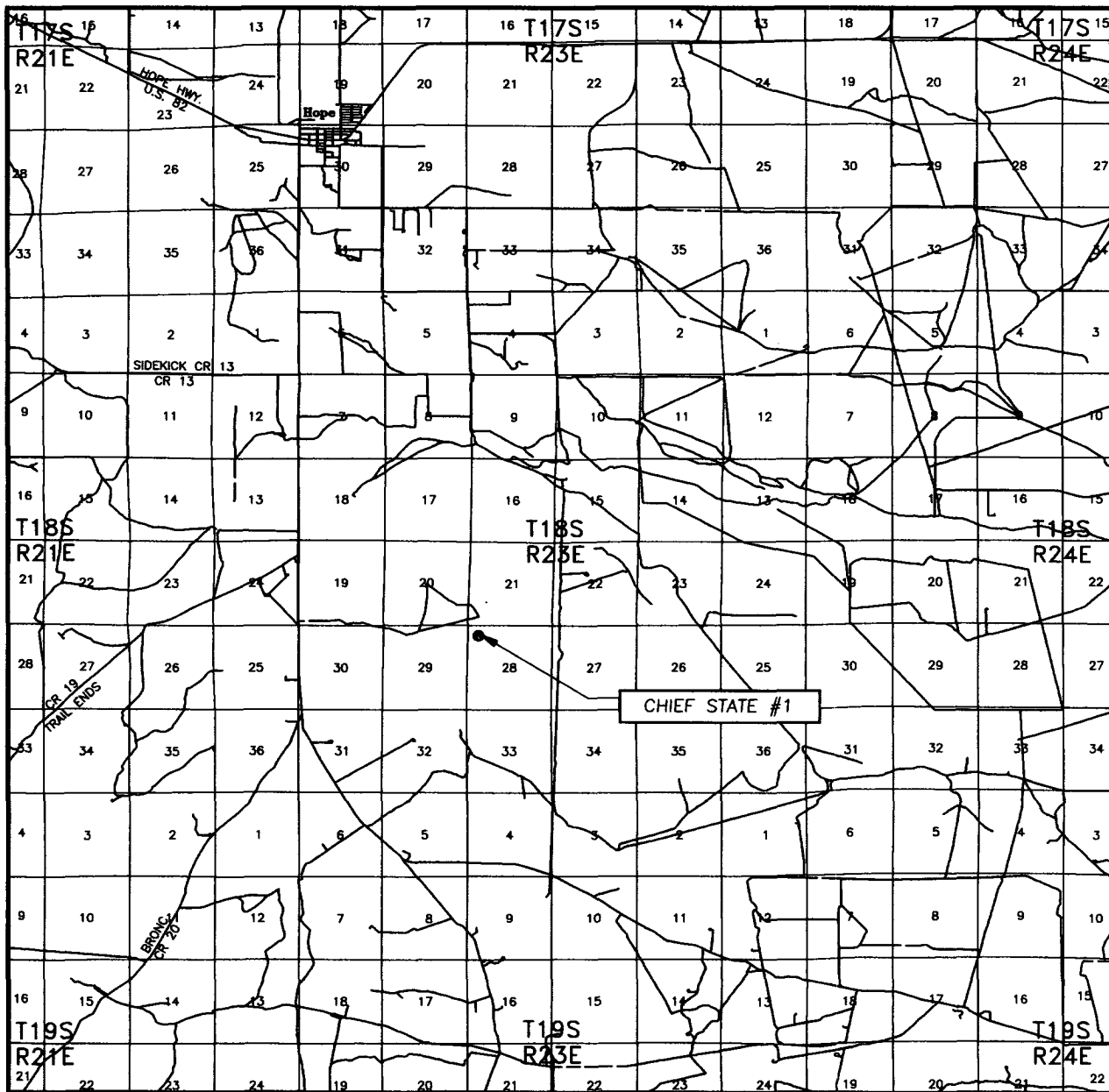
**MACK ENERGY CORPORATION**

CHIEF STATE #1 WELL  
 LOCATED 660 FEET FROM THE NORTH LINE  
 AND 660 FEET FROM THE WEST LINE OF SECTION 28,  
 TOWNSHIP 18 SOUTH, RANGE 23 EAST, N.M.P.M.,  
 EDDY COUNTY, NEW MEXICO.

Survey Date: 03/25/05	Sheet 1 of 1 Sheets
W.O. Number: 05.11.0451	Dr By: DEL
Date: 03/31/05	Disk: CD#4
05110451	Scale: 1"=100'

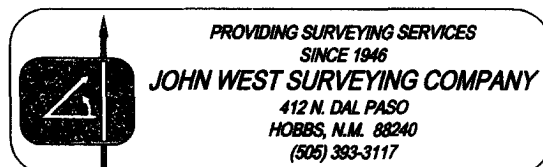


# VICINITY MAP

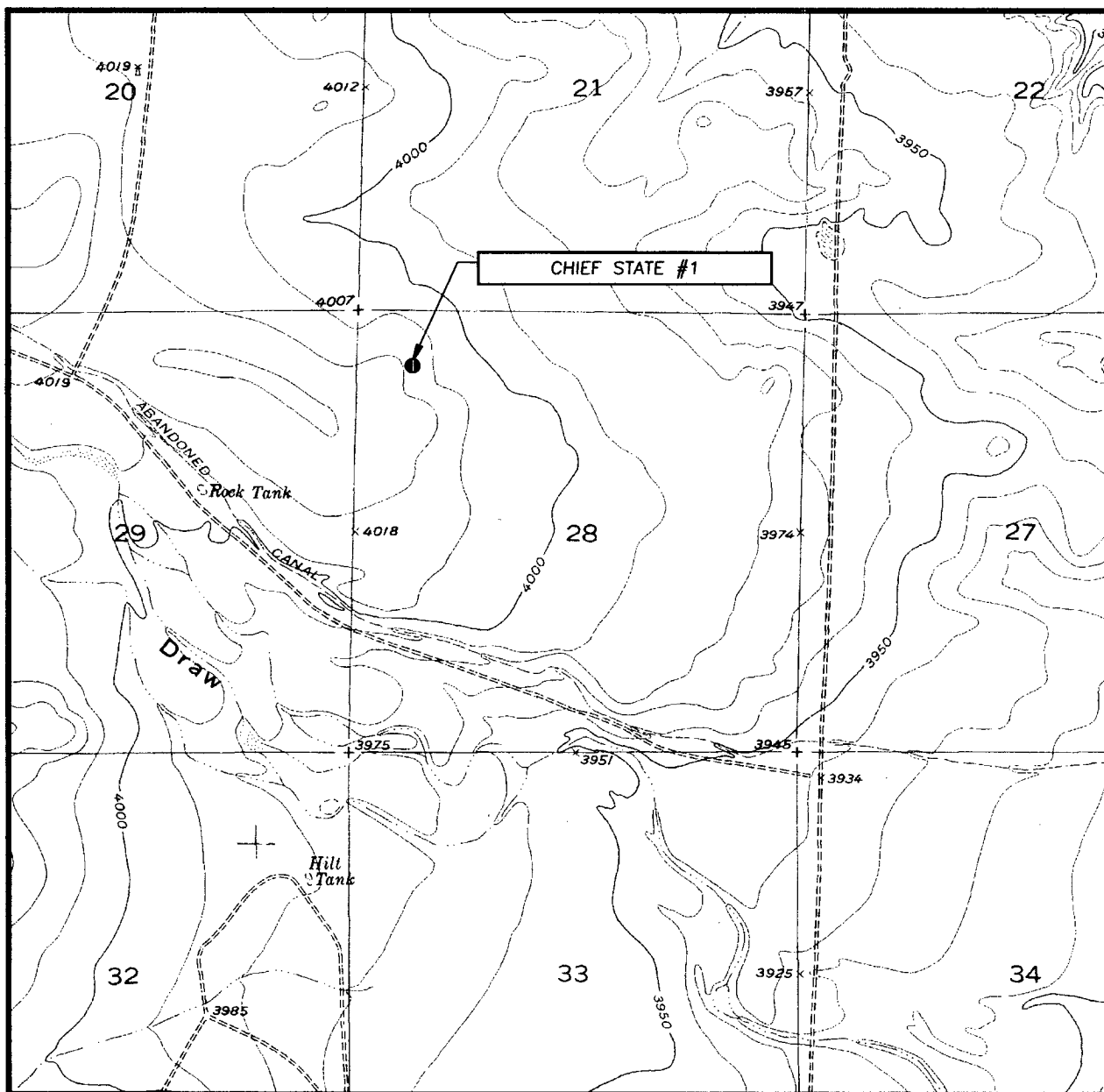


SCALE: 1" = 2 MILES

SEC. 28 TWP. 18-S RGE. 23-E  
 SURVEY \_\_\_\_\_ N.M.P.M. \_\_\_\_\_  
 COUNTY \_\_\_\_\_ EDDY \_\_\_\_\_  
 DESCRIPTION 660' FNL & 660' FWL  
 ELEVATION \_\_\_\_\_ 4020' \_\_\_\_\_  
 OPERATOR \_\_\_\_\_ MACK ENERGY CORPORATION \_\_\_\_\_  
 LEASE \_\_\_\_\_ CHIEF STATE \_\_\_\_\_



# LOCATION VERIFICATION MAP



SCALE: 1" = 2000'

CONTOUR INTERVAL:  
ANTELOPE SINK, N.M. - 10'

SEC. 28 TWP. 18-S RGE. 23-E

SURVEY N.M.P.M.

COUNTY EDDY

DESCRIPTION 660' FNL & 660' FWL

ELEVATION 4020'

OPERATOR MACK ENERGY CORPORATION

LEASE CHIEF STATE

U.S.G.S. TOPOGRAPHIC MAP  
ANTELOPE SINK, N.M.

