

**RECEIVED**  
 District I  
 1625 N. French Rd., Hobbs, NM 88240  
 District II  
 1301 W. Grand Avenue, Artesia, NM 88001  
 District III  
 1000 Rio Pecos Rd., Aztec, NM 87410  
 District IV  
 1220 S. St. Francis Dr., Santa Fe, NM 87505

State of New Mexico  
 Energy, Minerals & Natural Resources Department  
 OIL CONSERVATION DIVISION  
 1220 South St. Francis Dr.  
 Santa Fe, NM 87505

Form C-402  
 Revised October 12, 2005  
 Submit to Appropriate District Office  
 State Lease- 4 Copies  
 Fee Lease- 3 Copies

☐ AMENDED REPORT

WELL LOCATION AND ACREAGE DEDICATION PLAT

API Number 30-015-39653	Pool Code 96830	Pool Name ARTESIA, GLORIETA-YESO (O)
Property Code 309603	Property Name ROO "22" STATE	Well Number 7
OCRID No 16696	Operator Name OXY USA INC.	Elevation 3547.0'

Surface Location

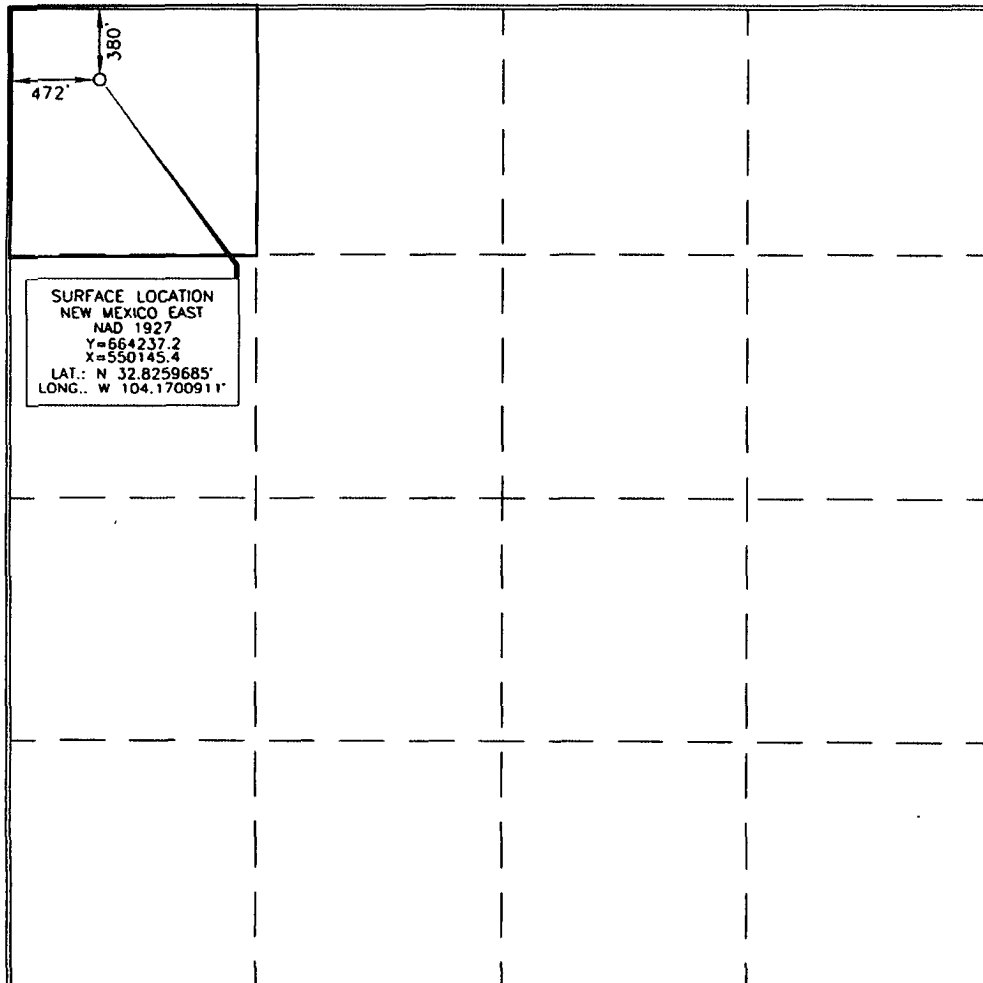
UL or lot no.	Section	Township	Range	Lot Idn	Feet from the	North/South line	Feet from the	East/West line	County
D	22	17 SOUTH	28 EAST, N.M.P.M.		380'	NORTH	472'	WEST	EDDY

Bottom Hole Location If Different From Surface

UL or lot no.	Section	Township	Range	Lot Idn	Feet from the	North/South line	Feet from the	East/West line	County

Dedicated Acres 40	Joint or Infill	Consolidation Code	Order No.
-----------------------	-----------------	--------------------	-----------

No allowable will be assigned to this completion until all interests have been consolidated or a non-standard unit has been approved by the division.



OPERATOR CERTIFICATION

I hereby certify that the information contained herein is true and complete to the best of my knowledge and belief, and that this organization either owns a working interest or unleased mineral interest in the land including the proposed bottom hole location or has a right to drill this well at this location pursuant to a contract with an owner of such a mineral or working interest, or to a voluntary pooling agreement or a compulsory pooling order heretofore entered by the division.

Signature: *Jennifer Duarte* Date: 7/5/12  
 JENNIFER DUARTE  
 Printed Name

SURVEYOR CERTIFICATION

I hereby certify that the well location shown on this plat was located from field notes or actual surveys made by me or under my supervision, and that the same is true and correct to the best of my belief.

15079  
 Date of Survey: SEPTEMBER 28, 2011  
 Signature and Seal of Professional Surveyor: *Terry J. Asel* 10/4/2011  
 Certificate Number: 15079