

District I  
1625 N French Dr , Hobbs, NM 88240  
Phone (575) 393-6161 Fax (575) 393-0720

District II  
811 S First St , Artesia, NM 88210  
Phone (575) 748-1283 Fax (575) 748-9720

District III  
1000 Rio Brazos Road, Aztec, NM 87410  
Phone (505) 334-6178 Fax (505) 334-6170

District IV  
1220 S St Francis Dr , Santa Fe, NM 87505  
Phone. (505) 476-3460 Fax (505) 476-3462

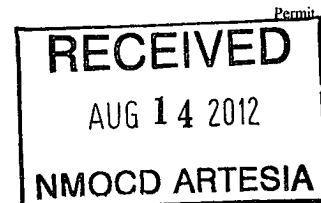
State of New Mexico  
Energy Minerals and Natural Resources

Form C-101  
Revised December 16, 2011

Oil Conservation Division

1220 South St. Francis Dr.

Santa Fe, NM 87505



**APPLICATION FOR PERMIT TO DRILL, RE-ENTER, DEEPEN, PLUGBACK, OR ADD A ZONE**

<sup>1</sup> Operator Name and Address Tarco Energy, L.C. 12403 CR 2300 Lubbock, TX 79423		<sup>2</sup> OGRID Number 279579
		<sup>3</sup> API Number 30-05-40621
<sup>4</sup> Property Code 39400	<sup>5</sup> Property Name BRAD STATE	<sup>6</sup> Well No. 4

**7 Surface Location**

UL - Lot C	Section 2	Township 18 SOUTH	Range 27 EAST N.M.P.M.	Lot Idn	Feet from 968'	N/S Line NORTH	Feet From 1650'	E/W Line WEST	County EDDY
---------------	--------------	-------------------------	------------------------------	---------	-------------------	-------------------	--------------------	------------------	----------------

**8 Pool Information**

RBD LAKE; GLORIBTA-VERSO, N.E.	96836
--------------------------------	-------

**Additional Well Information**

<sup>9</sup> Work Type N	<sup>10</sup> Well Type O	<sup>11</sup> Cable/Rotary AIR ROTARY	<sup>12</sup> Lease Type S	<sup>13</sup> Ground Level Elevation 3586.4'
<sup>14</sup> Multiple NO	<sup>15</sup> Proposed Depth 540	<sup>16</sup> Formation SEVEN RIVERS	<sup>17</sup> Contractor	<sup>18</sup> Spud Date 09-03-2012
Depth to Ground water		Distance from nearest fresh water well		Distance to nearest surface water

**19 Proposed Casing and Cement Program**

Type	Hole Size	Casing Size	Casing Weight/ft	Setting Depth	Sacks of Cement	Estimated TOC
7.875		4.5	9.5#	540	95	

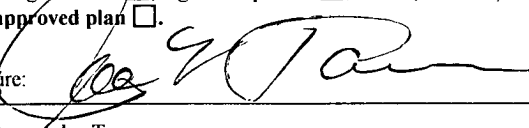


**Casing/Cement Program: Additional Comments**

The Drill Eig is truck mounted. The Air Compressor is operated from a "PTO" from the drilling engine. Drill 7.875" hole to 540'. Run Compensated Neutron and Gamma Ray -CCL logs. Set 4.5" casing, cement to surface. Perforate Seven Rivers formation. Perform acid treatment job w/approx 1500 gal 15% acid & additives.

**Proposed Blowout Prevention Program**

Type	Working Pressure	Test Pressure	Manufacturer

I hereby certify that the information given above is true and complete to the best of my knowledge and belief I further certify that the drilling pit will be constructed according to NMOCD guidelines <input type="checkbox"/> , a general permit <input type="checkbox"/> , or an (attached) alternative OCD-approved plan <input type="checkbox"/> .  Signature:  Printed name: Joe Tarver Title President: E-mail Address: Date:	OIL CONSERVATION DIVISION	
	Approved By: 	
	Title: 	
	Approved Date: 8/20/2012	Expiration Date: 8/24/2014
	Conditions of Approval Attached	

District I  
1625 N French Dr., Hobbs, NM 88240  
Phone: (575) 393-6161 Fax: (575) 393-0720  
District II  
811 S. First St., Artesia, NM 88210  
Phone: (575) 748-1283 Fax: (575) 748-9720  
District III  
1000 Rio Brazos Road, Aztec, NM 87410  
Phone: (505) 334-6178 Fax: (505) 334-6170  
District IV  
1220 S St Francis Dr., Santa Fe, NM 87505  
Phone: (505) 476-3460 Fax: (505) 476-3462

State of New Mexico  
Energy, Minerals & Natural Resources Department  
OIL CONSERVATION DIVISION  
1220 South St. Francis Dr.  
Santa Fe, NM 87505

Form C-102  
Revised August 1, 2011  
Submit one copy to appropriate  
District Office

☐ AMENDED REPORT

WELL LOCATION AND ACREAGE DEDICATION PLAT

API Number 30-015-40621	Pool Code 96836	Pool Name Red Lake; GL-4850; N.E.
Property Code 39400	Property Name BRAD STATE	Well Number 4
OGRID No. 279579	Operator Name TARCO ENERGY, L.C.	Elevation 3586.4'

Surface Location

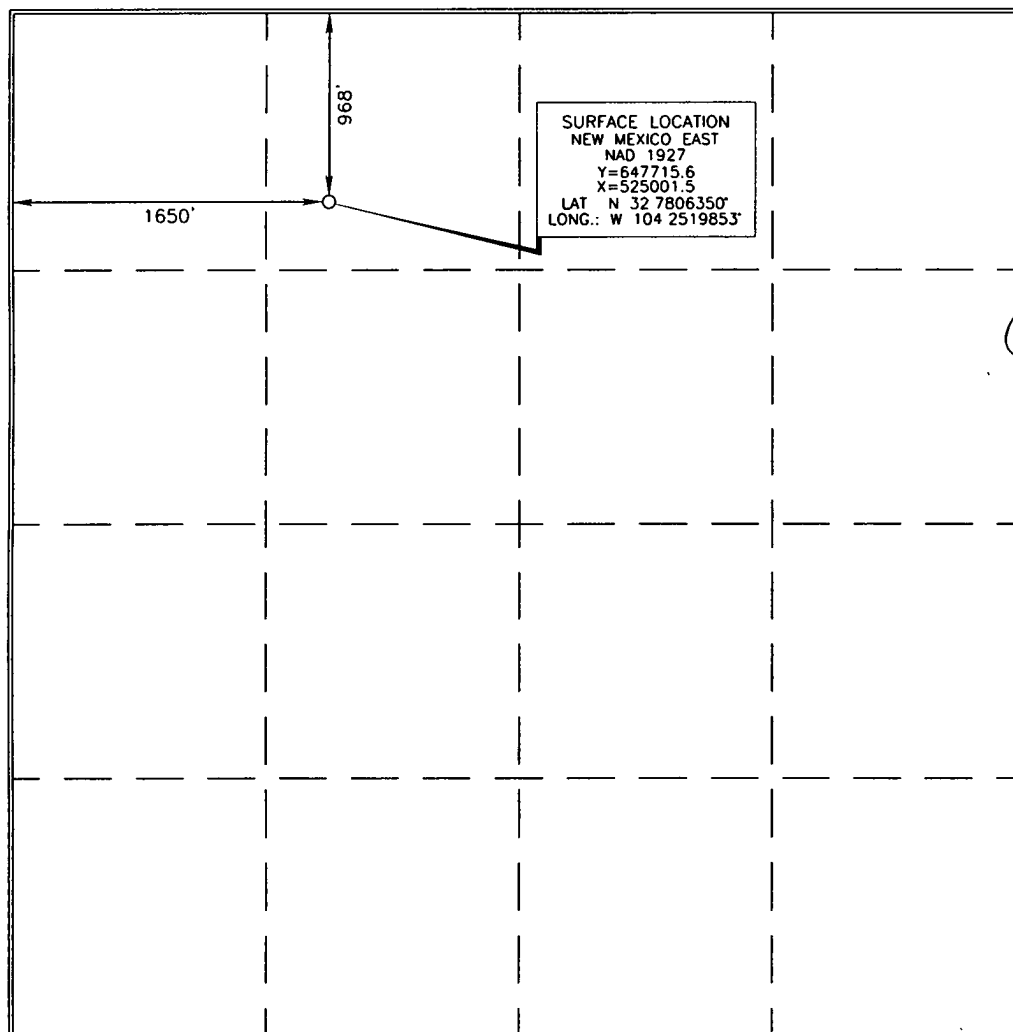
UL or lot no.	Section	Township	Range	Lot Idn	Feet from the	North/South line	Feet from the	East/West line	County
C	2	18 SOUTH	27 EAST, N.M.P.M.		968'	NORTH	1650'	WEST	EDDY

Bottom Hole Location If Different From Surface

UL or lot no.	Section	Township	Range	Lot Idn	Feet from the	North/South line	Feet from the	East/West line	County

Dedicated Acres	Joint or Infill	Consolidation Code	Order No.

No allowable will be assigned to this completion until all interests have been consolidated or a non-standard unit has been approved by the division.



OPERATOR CERTIFICATION

I hereby certify that the information contained herein is true and complete to the best of my knowledge and belief, and that this organization either owns a working interest or unleased mineral interest in the land including the proposed bottom hole location or has a right to drill this well at this location pursuant to a contract with an owner of such a mineral or working interest, or to a voluntary pooling agreement or a compulsory pooling order heretofore entered by the division.

Signature: Joe Tarver Date: 8/13/2012

Printed Name: JOE TARVER  
E-mail Address: JOE@TARCO.SUPPLY.COM

SURVEYOR CERTIFICATION

I hereby certify that the well location shown on this plat was plotted from the actual surveys made by me or under my supervision and that the same is true and correct to the best of my belief.

Date of Survey: May 21, 2012  
Signature and Seal of Professional Surveyor: Terry J. Paul

Certificate Number: 15079

WO# 120521WL-h (KA)