

RECEIVED

SEP 18 2012

DISTRICT I

1625 N. French Dr., Hobbs, NM 88240

DISTRICT II

1301 W. Grand Avenue, Artesia, NM 88210

DISTRICT III

1000 Rio Brazos Rd., Aztec, NM 87410

DISTRICT IV

1220 S. St. Francis Dr., Santa Fe, NM 87505

State of New Mexico

Energy, Minerals and Natural Resources Department

Form C-102

Revised October 12, 2005

Submit to Appropriate District Office

State Lease - 4 Copies

Fee Lease - 3 Copies

NMOCD ARTESIA**OIL CONSERVATION DIVISION**

1220 South St. Francis Dr.

Santa Fe, New Mexico 87505

WELL LOCATION AND ACREAGE DEDICATION PLAT☐ AMENDED REPORT

API Number 30-015-37095	Pool Code 8090	Pool Name BRUSHY DRAW-DELAWARE EAST
Property Code <i>36878</i>	Property Name RDX "15"	Well Number 10
GRID No. 246289	Operator Name RKI EXPLORATION & PRODUCTION LLC	Elevation 3113'

Surface Location

UL or lot No. E	Section 15	Township 26 S	Range 30 E	Lot Idn	Feet from the 2090	North/South line NORTH	Feet from the 930	East/West line WEST	County EDDY
--------------------	---------------	------------------	---------------	---------	-----------------------	---------------------------	----------------------	------------------------	----------------

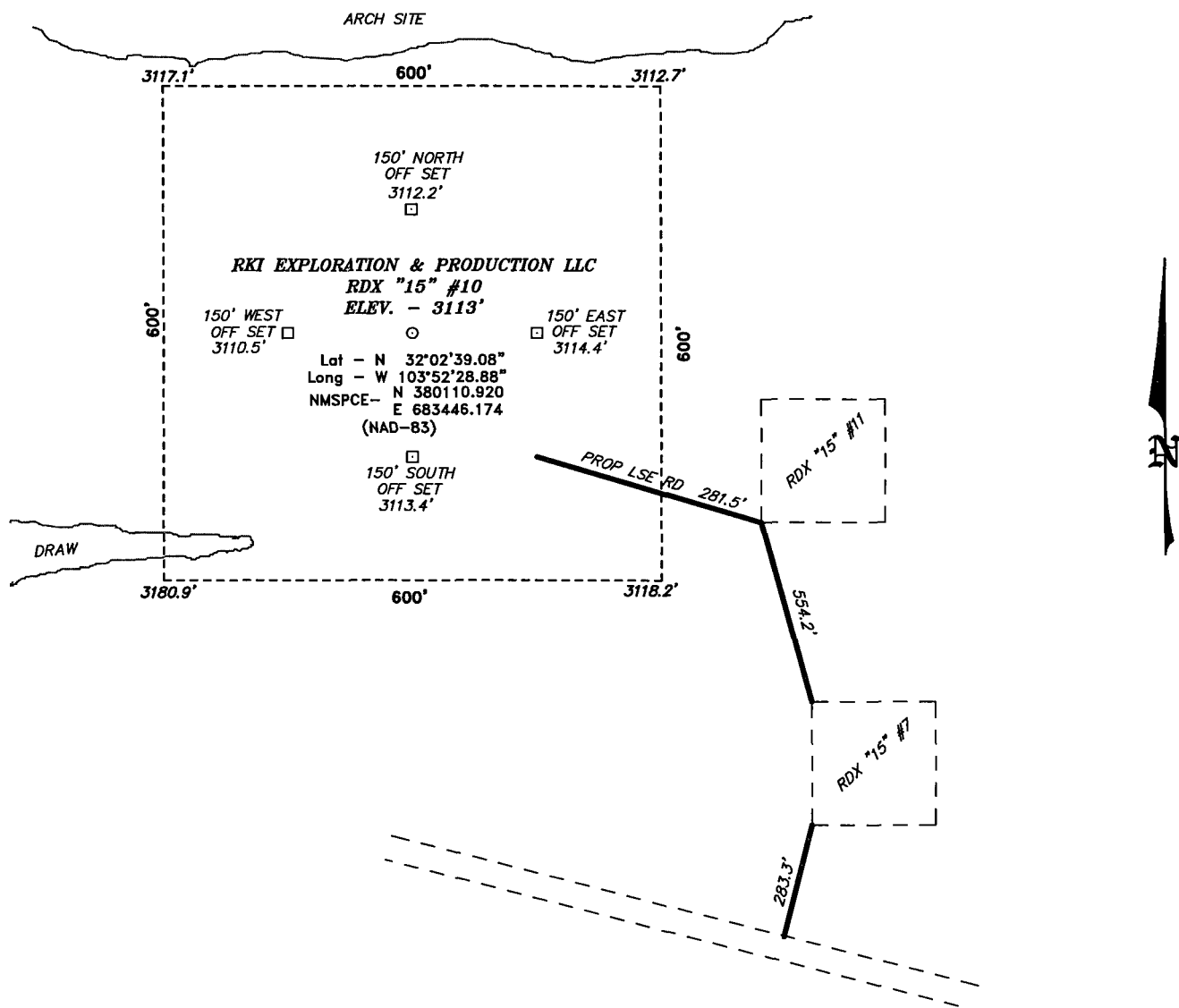
Bottom Hole Location If Different From Surface

UL or lot No.	Section	Township	Range	Lot Idn	Feet from the	North/South line	Feet from the	East/West line	County
Dedicated Acres	Joint or Infill	Consolidation Code	Order No.						

NO ALLOWABLE WILL BE ASSIGNED TO THIS COMPLETION UNTIL ALL INTERESTS HAVE BEEN CONSOLIDATED
OR A NON-STANDARD UNIT HAS BEEN APPROVED BY THE DIVISION

	OPERATOR CERTIFICATION I hereby certify that the information contained herein is true and complete to the best of my knowledge and belief, and that this organization either owns a working interest or unleased mineral interest in the land including the proposed bottom hole location pursuant to a contract with an owner of such a mineral or working interest, or to a voluntary pooling agreement or a compulsory pooling order heretofore entered by the division. <i>Charles K. Ahn</i> 9/11/2012 Signature Date Charles K. Ahn Printed Name
	SURVEYOR CERTIFICATION I hereby certify that the well location shown on this plat was plotted from field notes of actual surveys made by me or under my supervision and that the same is true and correct to the best of my belief. APR 24 2012 Date Surveyed Signature & Seal of Professional Surveyor Certificate No. <i>Charles K. Jones</i> 7977 BASIN SURVEYS

SECTION 15, TOWNSHIP 26 SOUTH, RANGE 30 EAST, N.M.P.M.,
EDDY COUNTY, NEW MEXICO.



DIRECTIONS TO LOCATION:

FROM THE JUNCTION OF HWY 285 AND LONGHORN,
GO EAST 3.9 MILES TO SECOND ROAD ON RIGHT
PAST A LOW WATER CROSSING, GO EAST 5.9 MILES
TO LEAS ROAD, ON LEASE ROAD GO SOUTH 1.2
MILES TO 2-TRACK, GO EAST TO PROPOSED
LOCATION.

BASIN SURVEYS P.O. BOX 1786-HOBBS, NEW MEXICO

W.O. Number: 21284 Drawn By: J. SMALL

Date: 04-27-2009 Disk: JMS 21284

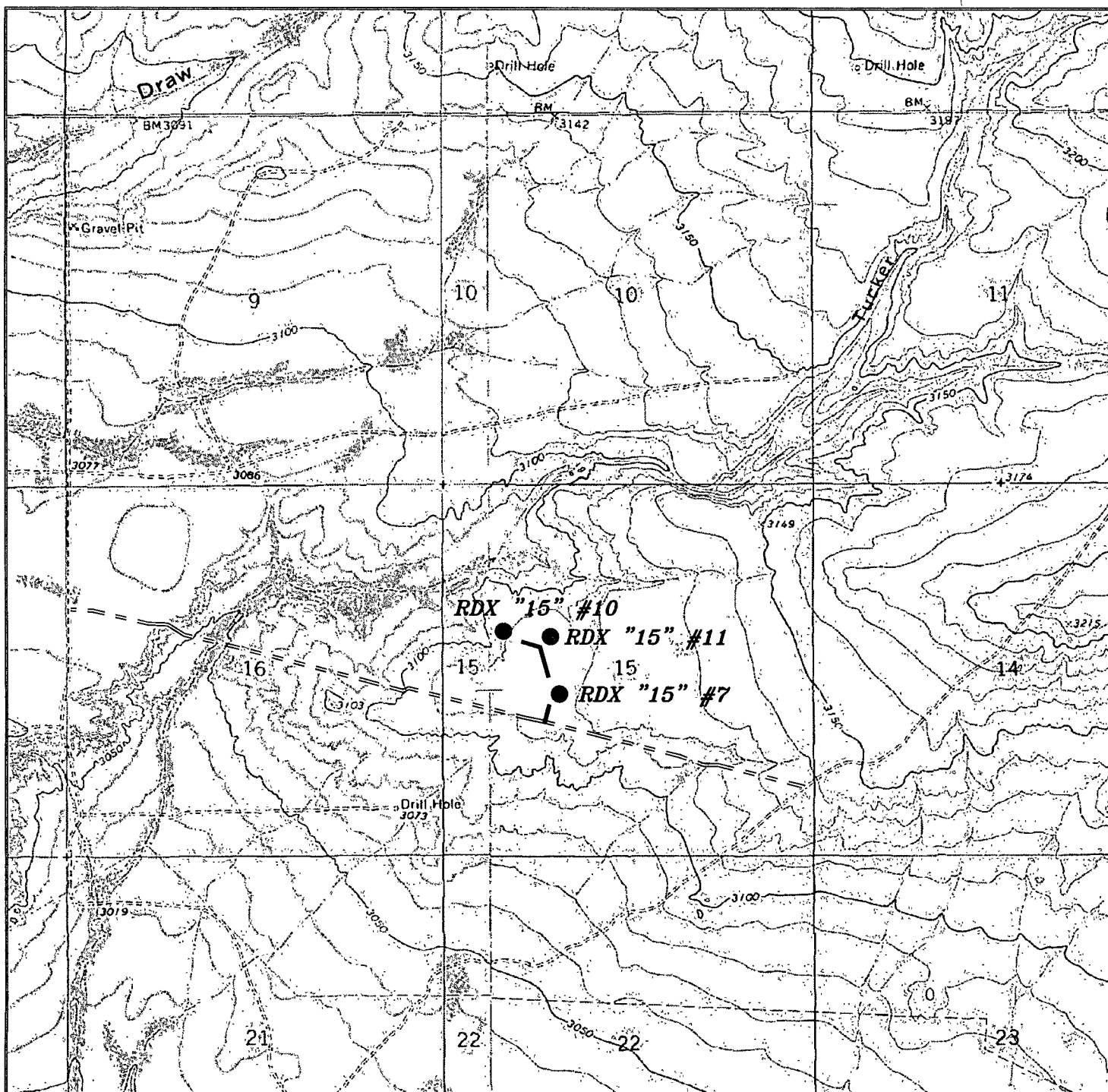
RKI EXPLORATION & PRODUCTION LLC

REF: RDX "15" #10 / WELL PAD TOPO

THE RDX "15" #10 LOCATED 2090'

FROM THE NORTH LINE AND 930' FROM THE WEST LINE OF
SECTION 15, TOWNSHIP 26 SOUTH, RANGE 30 EAST,
N.M.P.M., EDDY COUNTY, NEW MEXICO.

Survey Date: 04-24-2009 Sheet 1 of 1 Sheets



RDX "15" #10

Located 2090' FNL and 930' FWL

Section 15, Township 26 South, Range 30 East,
N.M.P.M., Eddy County, New Mexico.

basin
surveys
focused on excellence
in the oilfield

P.O. Box 1786
1120 N. West County Rd.
Hobbs, New Mexico 88241
(575) 393-7316 - Office
(575) 392-2206 - Fax
basinsurveys.com

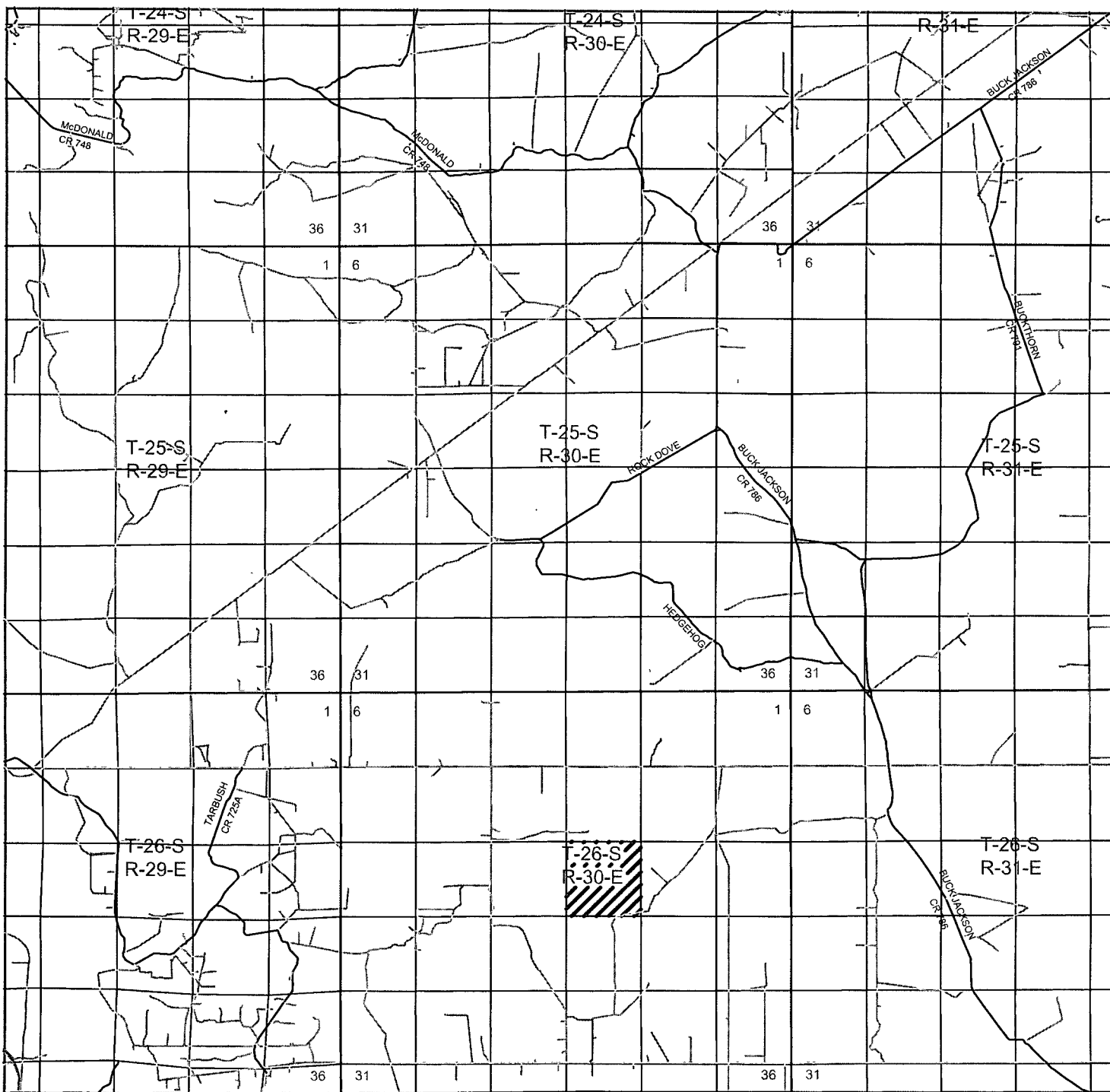
W.O. Number: JMS 21284

Survey Date: 04-24-2009

Scale: 1" = 2000'

Date: 04-27-2009

RKI
**EXPLORATION &
PRODUCTION LLC**



RDX "15" #10

Located 2090' FNL and 930' FWL

**Section 15, Township 26 South, Range 30 East,
N.M.P.M., Eddy County, New Mexico.**

**basin
surveys**
focused on excellence
in the oilfield

P.O. Box 1786
1120 N. West County Rd.
Hobbs, New Mexico 88241
(575) 393-7316 - Office
(575) 392-2206 - Fax
basinsurveys.com

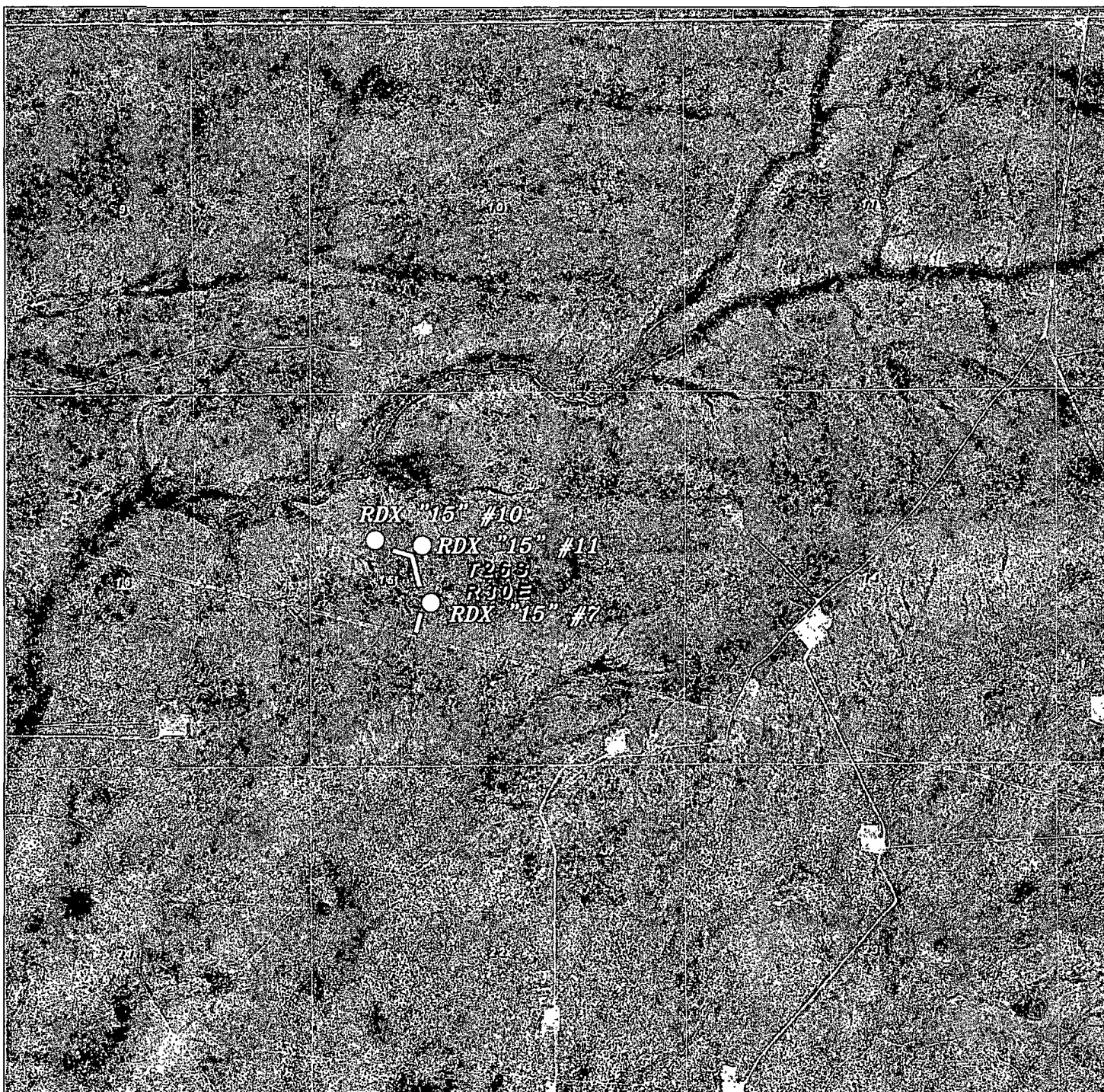
W.O. Number: JMS 21284

Survey Date: 04-24-2009

Scale: 1" = 2 Miles

Date: 04-27-2009

**RKI
EXPLORATION &
PRODUCTION LLC**



RDX "15" #10

Located 2090' FNL and 930' FWL

Section 15, Township 26 South, Range 30 East,
N.M.P.M., Eddy County, New Mexico.

basin
surveys

focused on excellence
in the oilfield

P.O. Box 1786
1120 N. West County Rd.
Hobbs, New Mexico 88241
(575) 393-7316 - Office
(575) 392-2206 - Fax
basinsurveys.com

W.O. Number: 21284

Scale: 1" = 2000'

YELLOW TINT - USA LAND
BLUE TINT - STATE LAND
NATURAL COLOR - FEE LAND



RKI
EXPLORATION &
PRODUCTION LLC