

DISTRICT I

1625 N. French Dr., Hobbs, NM 88240
Phone (575) 393-6151 Fax: (575) 393-0720

DISTRICT II

1301 W. Grand Avenue, Artesia, NM 88210
Phone (505) 748-1283 Fax: (505) 748-9720

DISTRICT III

1000 Rio Brazos Rd., Aztec, NM 87410
Phone (505) 334-6178 Fax: (505) 334-6170

DISTRICT IV

1220 S. St. Francis Dr., Santa Fe, NM 87505
Phone (505) 476-3460 Fax: (505) 476-3462

State of New Mexico
Energy, Minerals and Natural Resources Department

OIL CONSERVATION DIVISION

1220 South St. Francis Dr.
Santa Fe, New Mexico 87505

RECEIVED

SEP 19 2012

Form C-102

Revised August 1, 2011

NMOCD ARTESIA

Submit one copy to appropriate
District Office

As Drilled

☐ AMENDED REPORT

WELL LOCATION AND ACREAGE DEDICATION PLAT

API Number 30-015-38550	Pool Code 97197	Pool Name County Line Tank; Abo
Property Code 28584	Property Name GRANDE MIKE AZK STATE	Well Number 3H
OGRID No. 025575	Operator Name YATES PETROLEUM CORP.	Elevation 3753'

Surface Location

UL or lot No.	Section	Township	Range	Lot Idn	Feet from the	North/South line	Feet from the	East/West line	County
LOT 12	2	16 S	29 E		3310	NORTH	200	WEST	EDDY

Bottom Hole Location If Different From Surface

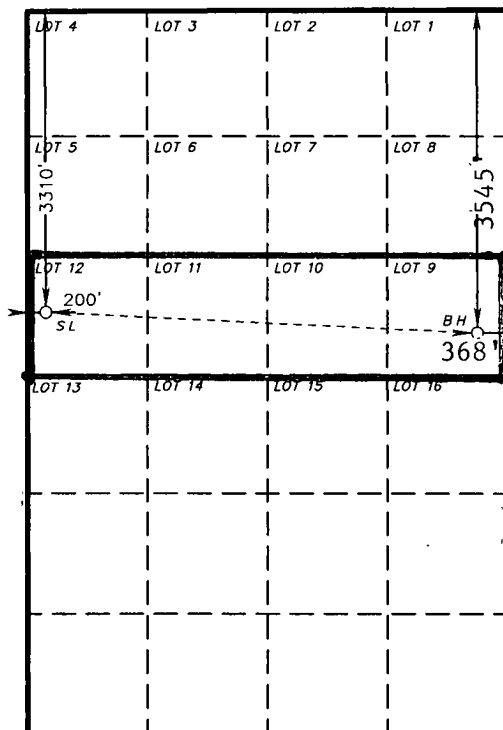
UL or lot No.	Section	Township	Range	Lot Idn	Feet from the	North/South line	Feet from the	East/West line	County
LOT 9	2	16 S	29 E		3545	NORTH	368	EAST	EDDY

Dedicated Acres	Joint or Infill	Consolidation Code	Order No.
160			

NO ALLOWABLE WILL BE ASSIGNED TO THIS COMPLETION UNTIL ALL INTERESTS HAVE BEEN CONSOLIDATED
OR A NON-STANDARD UNIT HAS BEEN APPROVED BY THE DIVISION

SURFACE LOCATION

Lat - N 32°57'22.61"
Long - W 104°03'12.38"
NMSPC- N 711744.022
E 627189.006
(NAD-83)



PROPOSED BOTTOM HOLE LOCATION

Lat - N 32°57'20.24"
Long - W 104°02'16.43"
NMSPC- N 711517.27
E 631956.59
(NAD-83)

OPERATOR CERTIFICATION

I hereby certify that the information contained herein is true and complete to the best of my knowledge and belief, and that this organization either owns a working interest or unleased mineral interest in the land including the proposed bottom hole location or has a right to drill this well at this location pursuant to a contract with an owner of such a mineral or working interest, or to a voluntary pooling agreement or a compulsory pooling order heretofore entered by the division.

Tina Huerta 9/17/12
Signature Date

Tina Huerta

Printed Name
tina@yatespetroleum.com

Email Address

SURVEYOR CERTIFICATION

I hereby certify that the well location shown on this plat was plotted from field notes of actual surveys made by me or under my supervision, and that the same is true and correct to the best of my belief

APPROVED
SEP 10, 2012
NEW MEXICO
Professional Surveyor
7877

Certificate No. Gary L. Jones 7977

Basin Surveys

26576