

Form 3160-3  
(April 2004)

UNITED STATES  
DEPARTMENT OF THE INTERIOR  
BUREAU OF LAND MANAGEMENT

OCD Artesia

FORM APPROVED  
OMB No 1004-0137  
Expires March 31, 2007

APPLICATION FOR PERMIT TO DRILL OR REENTER

1a. Type of work: <input checked="" type="checkbox"/> DRILL <input type="checkbox"/> REENTER		5. Lease Serial No NMLC-028731A
1b. Type of Well: <input checked="" type="checkbox"/> Oil Well <input type="checkbox"/> Gas Well <input type="checkbox"/> Other <input type="checkbox"/> Single Zone <input type="checkbox"/> Multiple Zone		6. If Indian, Allottee or Tribe Name N/A
2. Name of Operator COG Operating LLC		7. If Unit or CA Agreement, Name and No. NMNM-111789X; Dodd Federal Unit
3a. Address 550 W. Texas Ave., Suite 100 Midland, TX 79701		8. Lease Name and Well No DODD FEDERAL UNIT #632
3b. Phone No. (include area code) 432-685-4384		9. API Well No. 30-015-
4. Location of Well (Report location clearly and in accordance with any State requirements *) At surface 1156' FSL & 980' FEL, Unit P At proposed prod zone		10. Field and Pool, or Exploratory Dodd; Glorieta-Upper Yeso
14. Distance in miles and direction from nearest town or post office* 2 miles from Loco Hills, NM		11. Sec., T. R. M. or Blk and Survey or Area Sec 15 T17S R29E
15. Distance from proposed* location to nearest property or lease line, ft (Also to nearest drg. unit line, if any) 980'	16. No. of acres in lease 600	17. Spacing Unit dedicated to this well 40
18. Distance from proposed location* to nearest well, drilling, completed, applied for, on this lease, ft 394'	19. Proposed Depth 4450'	20. BLM/BIA Bond No on file NMB000215; NMB000740
21. Elevations (Show whether DF, KDB, RT, GL, etc.) 3594' GL	22. Approximate date work will start* 09/30/2012	23. Estimated duration 15 days

24. Attachments

The following, completed in accordance with the requirements of Onshore Oil and Gas Order No.1, shall be attached to this form:

- |   |  |
|---|--|
| 1. Well plat certified by a registered surveyor.  | 4. Bond to cover the operations unless covered by an existing bond on file (see Item 20 above).    |
| 2. A Drilling Plan.   | 5. Operator certification  |
| 3. A Surface Use Plan (if the location is on National Forest System Lands, the SUPO shall be filed with the appropriate Forest Service Office). | 6. Such other site specific information and/or plans as may be required by the authorized officer. |

25. Signature 	Name (Printed/Typed) Kelly J. Holly	Date 07/10/2012
-------------------	--	--------------------

Title  
Permitting Tech

Approved by (Signature) /s/ Don Peterson	Name (Printed/Typed) /s/ Don Peterson	Date SEP 21 2012
---	--	---------------------

Title  
FIELD MANAGER

Office  
CARLSBAD FIELD OFFICE

Application approval does not warrant or certify that the applicant holds legal or equitable title to those rights in the subject lease which would entitle the applicant to conduct operations thereon.

Conditions of approval, if any, are attached.

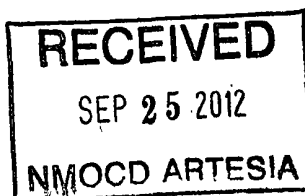
APPROVAL FOR TWO YEARS

Title 18 U.S.C. Section 1001 and Title 43 U.S.C. Section 1212, make it a crime for any person knowingly and willfully to make to any department or agency of the United States any false, fictitious or fraudulent statements or representations as to any matter within its jurisdiction.

\*(Instructions on page 2)

Roswell Controlled Water Basin

Approval Subject to General Requirements  
& Special Stipulations Attached



SEE ATTACHED FOR  
CONDITIONS OF APPROVAL

I hereby certify that I, or persons under my direct supervision, have inspected the drill site and access road proposed herein; that I am familiar with the conditions that presently exist; that I have full knowledge of State and Federal laws applicable to this operation; that the statements made in this APD package are, to the best of my knowledge, true and correct; and that the work associated with the operations proposed herein will be performed in conformity with this APD package and the terms and conditions under which it is approved. I also certify that I, or COG Operating, LLC, am responsible for the operations conducted under this application. These statements are subject to the provisions of 18 U.S.C. 1001 for the filing of false statements. Executed this 2nd day of July, 2012.

Signed: 

Printed Name: Carl Bird

Position: Drilling Engineer

Address: 550 W. Texas, Suite 1300, Midland, Texas 79701

Telephone: (432) 683-7443

Field Representative (if not above signatory): Same

E-mail: [cbird@concho.com](mailto:cbird@concho.com)

DISTRICT I  
1625 N French Dr., Hobbs, NM 88240  
Phone (575) 393-6161 Fax: (575) 393-0720  
DISTRICT II  
811 S First St., Artesia, NM 88210  
Phone, (575) 748-1283 Fax, (575) 748-9720  
DISTRICT III  
1000 Rio Brazos Road, Aztec, NM 87410  
Phone (505) 334-6178 Fax, (505) 334-6170  
DISTRICT IV  
1220 S. St Francis Dr., Santa Fe, NM 87505  
Phone (505) 476-3460 Fax: (505) 476-3462

State of New Mexico  
Energy, Minerals & Natural Resources Department  
OIL CONSERVATION DIVISION  
1220 South St. Francis Dr.  
Santa Fe, New Mexico 87505

Form C-102  
Revised August 1, 2011  
Submit one copy to appropriate  
District Office

☐ AMENDED REPORT

WELL LOCATION AND ACREAGE DEDICATION PLAT

API Number 30-015- <b>40752</b>	Pool Code 97917	Pool Name Dodd; Glorieta-Upper Yeso
Property Code 308195	Property Name DODD FEDERAL UNIT	Well Number 632
OGRID No. 229137	Operator Name COG OPERATING, LLC	Elevation 3594'


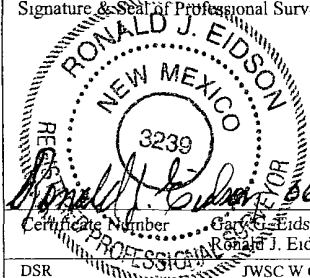
Surface Location

UL or lot No. P	Section 15	Township 17-S	Range 29-E	Lot Idn	Feet from the 1156	North/South line SOUTH	Feet from the 980	East/West line EAST	County EDDY
--------------------	---------------	------------------	---------------	---------	-----------------------	---------------------------	----------------------	------------------------	----------------

Bottom Hole Location If Different From Surface

UL or lot No.	Section	Township	Range	Lot Idn	Feet from the	North/South line	Feet from the	East/West line	County
Dedicated Acres 40	Joint or Infill	Consolidation Code	Order No						

NO ALLOWABLE WILL BE ASSIGNED TO THIS COMPLETION UNTIL ALL INTERESTS HAVE BEEN CONSOLIDATED OR A NON-STANDARD UNIT HAS BEEN APPROVED BY THE DIVISION

<p>GEODETIC COORDINATES NAD 27 NME</p> <p>SURFACE LOCATION Y=665915.2 N X=584962.8 E</p> <p>LAT.=32.830382° N LONG.=104.056734° W</p>	<p>DETAIL</p> <p>3595.7' 3591.5'</p> <p>600'</p> <p>3586.4' 3592.6'</p> <p>980'</p> <p>1156'</p> <p>SEE DETAIL</p>	<p><b>OPERATOR CERTIFICATION</b></p> <p>I hereby certify that the information herein is true and complete to the best of my knowledge and belief, and that this organization either owns a working interest or unleased mineral interest in the land including the proposed bottom hole location or has a right to drill this well at this location pursuant to a contract with an owner of such mineral or working interest, or to a voluntary pooling agreement or a compulsory pooling order heretofore entered by the division</p> <p> 6-28-12 Signature Date</p> <p>Kelly J. Holly Printed Name</p> <p>kholly@concho.com E-mail Address</p>
		<p><b>SURVEYOR CERTIFICATION</b></p> <p>I hereby certify that the well location shown on this plat was plotted from field notes of actual surveys made by me or under my supervision, and that the same is true and correct to the best of my belief.</p> <p>June 18, 2012</p> <p>Date of Survey</p> <p>Signature &amp; Seal of Professional Surveyor.</p> <p> 06/21/2012</p> <p>Certificate Number Ronald J. Eidson 12641 Ronald J. Eidson 3239</p> <p>DSR JWSC W.O. 12.11 0424</p>

## MASTER DRILLING PROGRAM

### 1. Geologic Name of Surface Formation

Quaternary

### 2. Estimated Tops of Important Geologic Markers:

Quaternary	Surface
Rustler	220'
Salt	360'
Base of Salt	780'
Yates	950'
Seven Rivers	1235'
Queen	1845'
Grayburg	2220'
San Andres	2540'
Glorieta	4000'
Paddock	4075'
Blinbry	4620'
Tubb	5520'

### 3. Estimated Depths of Anticipated Fresh Water, Oil and Gas

Water Sand	150'	Fresh Water
Grayburg	2220'	Oil/Gas
San Andres	2540'	Oil/Gas
Glorieta	4000'	Oil/Gas
Paddock	4075'	Oil/Gas
Blinebry	4620'	Oil/Gas
Tubb	5520'	Oil/Gas

No other formations are expected to give up oil, gas or fresh water in measurable quantities. Setting 13 3/8" casing to 300' and circulating cement back to the surface will protect the surface fresh water sand. The Salt Section will be protected by setting 8 5/8" casing to 850' and circulating cement, in a single or multi-stage job and/or with an ECP, back to the surface. Any shallower zones above TD, which contain commercial quantities of oil and/or gas, will have cement circulated across them. This will be achieved by cementing, with a single or multi-stage job, the 5 1/2" production casing back 200' into the intermediate casing, (but calculated to surface) to be run at TD. If wellbore conditions arise that require immediate action and/or a change to this program, COG Operating LLC personnel will always react to protect the wellbore and/or environment.

See  
COA

4. Casing Program

See  
COA

Hole Size	Interval	OD Casing	Weight	Grade	Jt., Condition	Jt.	brst/clps/ten
17 1/2"	0-300'25'	13 3/8"	48#	H-40/J-55 hybrid	ST&C/New	ST&C	9.22/3.943/15.8
11"	0-850'33'	8 5/8"	24or32#	J-55	ST&C/New	ST&C	3.03/2.029/7.82
7 7/8"	0-TD	5 1/2"	15.5or17#	J-55orL-80	LT&C/New	LT&C	1.88/1.731/2.42

5. Cement Program See COA

13 3/8" Surface Casing:

Class C w/ 2% CaCl<sub>2</sub> + 0.25 pps CF, 400 sx, yield 1.32 cuft/sk, 14.8 ppg, back to surface. 154% excess

8 5/8" Intermediate Casing:

**11" Hole:**

**Single Stage:** 50:50:10 C:Poz:Gel w/ 5% Salt +0.25% CF, 300 sx lead, yield-2.45 cuft/sk, 11.8 ppg + Class C w/2% CaCl<sub>2</sub>, 200 sx tail, yield-1.32 cuft/sk, 14.8 ppg, back to surface. 363% excess

**Multi-Stage:** Stage 1: Class C w/2% CaCl<sub>2</sub>, 200 sx, yield - 1.32 cuft/sk, 14.8 ppg; 108% excess Stage 2: 50:50:10 C:Poz:Gel w/ 5% Salt +0.25% CF, 300 sx, yield - 2.45 cuft/sk, 11.8 ppg, back to surface, 726% excess; assumption for tool is lost circulation. Multi stage tool to be set at approximately, depending on hole conditions, 350' (50' below the surface casing). Cement volumes will be adjusted proportionately for depth changes of multi stage tool.

5 1/2" Production Casing:

**Single Stage:** LEAD 500 sx 35:65:6 C:Poz:Gel w/ 5% Salt + 5 pps LCM + 0.2% SMS + 0.3% FL-52A + 0.125 pps CF, yield-2.05 cuft/sk, 12.5 ppg; + TAIL 400 sx 50:50:2 C:Poz:Gel w/ 5% Salt + 3 pps LCM + 0.6% SMS + 1% FL-25 + 1% BA-58 + 0.3% FL-52A + 0.125 pps CF, yield-1.37 cuft/sk, 14.0 ppg, to 200' minimum tie back to intermediate casing. 76.8% open hole excess, cement calculated back to surface.

**Multi-Stage:** Stage 1: (Assumed TD of 4550') 500 sx 50:50:2 C:Poz:Gel w/ 5% Salt + 3 pps LCM + 0.6% SMS + 1% FL-25 + 1% BA-58 + 0.3% FL-52A + 0.125 pps CF, yield - 1.37 cuft/sk, 14.0 ppg, 34% excess; Stage 2: LEAD 450 sx 50:50:2 C:Poz:Gel w/ 5% Salt + 3 pps LCM + 0.6% SMS + 1% FL-25 + 1% BA-58 + 0.3% FL-52A + 0.125 pps CF, yield - 1.37 cuft/sk, 14.0 ppg, + TAIL 250 sx Class C w/ 0.3% R-3 + 1.5% CD-32, yield - 1.02 cuft/sk, 16.8 ppg, 148% open hole excess, cement calculated back to surface. Multi stage tool to be set at approximately, depending on hole conditions, 2500'. Cement volumes will be adjusted proportionately for depth changes of multi stage tool, assumption for tool is water flow.

## 6. Minimum Specifications for Pressure Control

The blowout preventer equipment (BOP) shown in Exhibit #9 will consist of a double ram-type (2000 psi WP) preventer, and in some cases possibly a 2000 psi Hydril type annular preventer as provided for in Onshore Order #2. This unit will be hydraulically operated and the ram type preventer will be equipped with blind rams on top of 4 1/2" drill pipe rams on the bottom. A 13-5/8" or 11" BOP will be used, depending on the rig selected, during the drilling of the well. The BOP will be nipped up on the 13 3/8" surface casing with BOP equipment and tested to 2000 psi. When 11" BOP is used the special drilling flange will be utilized on the 13-3/8" head to allow testing the BOP with a retrievable test plug. After setting 8-5/8" the BOP will then be nipped up on the 8 5/8" intermediate casing and tested by a third party to 2000 psi and used continuously until total depth is reached. Pipe rams will be operationally checked each 24-hour period. Blind rams will be operationally checked on each trip out of the hole. These checks will be noted on the daily tour sheets. Other accessories to the BOP equipment will include a Kelly cock and floor safety valve, choke lines and a choke manifold (Exhibit #9) with a 2000 psi WP rating. This equipment will also be tested to rated working pressure by an independent tester.

The majority of the rigs currently in use have a 13-5/8" BOP, so no special provision is needed for most wells in the area for conventionally testing the BOP with a test plug. However, due to the vagaries of rig scheduling, it might be that one of the few rigs with 11" BOP's might be called upon to drill any specific well in the area. Note that intermediate hole size is always 11". Therefore, COG

Operating LLC respectfully requests a variance to the requirement of 13-5/8" BOP on 13-3/8" casing. When that circumstance is encountered the special flange will be utilized to allow testing the entire BOP with a test plug, without subjecting the casing to test pressure. The special flange also allows the return to full-open capability if desired.

## 7. Types and Characteristics of the Proposed Mud System

The well will be drilled to TD with a combination of brine, cut brine and polymer mud system. The applicable depths and properties of this system are as follows:

DEPTH	TYPE	WEIGHT	VISCOSITY	WATERLOSS
0-300' <del>255</del>	Fresh Water	8.5	28	N.C.
300-850' <del>435</del>	Brine	10	30	N.C.
850'-TD'	Cut Brine	8.7-9.2	30	N.C.

Sufficient mud materials will be kept at the well site to maintain mud properties and meet minimum lost circulation and weight increase requirements at all times.

## 8. Auxiliary Well Control and Monitoring Equipment

- A. Kelly cock will be kept in the drill string at all times.
- B. A full opening drill pipe-stabbing valve with proper drill pipe connections will be on the rig floor at all times.

## 9. Logging, Testing and Coring Program *See CDA*

- A. The electric logging program will consist of GR-Dual Laterolog, Spectral Density, Dual Spaced Neutron, CSNG Log and will be run from TD to Surface.
- B. Drill Stem test is not anticipated.
- C. No conventional coring is anticipated.
- D. Further testing procedures will be determined after the 5 1/2" production casing has been cemented at TD, based on drill shows and log evaluation.

## 10. Abnormal Conditions, Pressure, Temperatures and Potential Hazards

No abnormal pressures or temperatures are anticipated. The estimated bottom hole at TD is 110 degrees and the estimated maximum bottom hole pressure is 2300 psig. Measurable gas volumes or Hydrogen Sulfide levels have not been

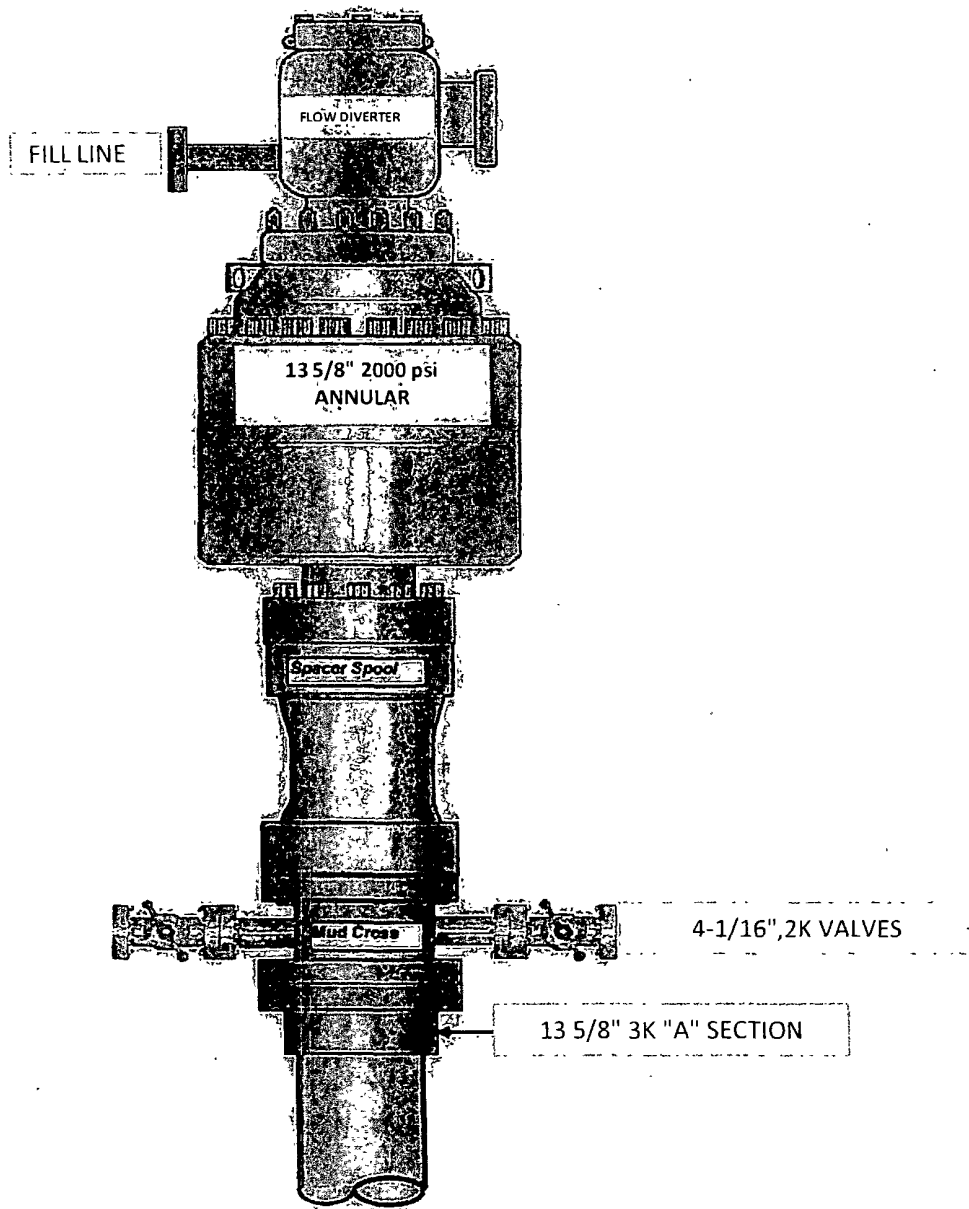
encountered during drilling operations in this area, although a Hydrogen Sulfide Drilling Operation Plan is attached to this program. No major loss of circulation zones has been reported in offsetting wells.

**11. Anticipated Starting Date and Duration of Operations**

Road and location work will not begin until approval has been received from the BLM. As this is a Master Drilling plan, please refer to the Form 3160-3 for the anticipated start date. Once commenced, drilling operations should be finished in approximately 10 days. If the well is productive, an additional 30 days will be required for completion and testing before a decision is made to install permanent facilities. Completion is planned in the Paddock formation.



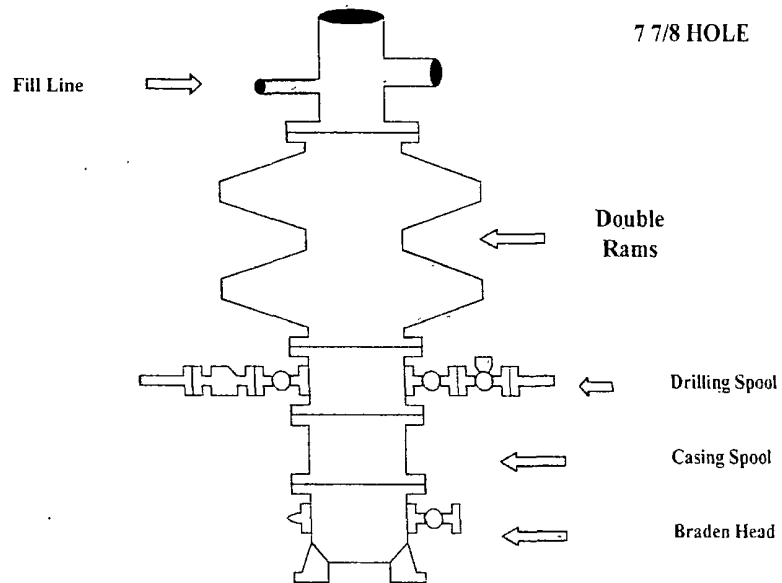
13 5/8" 2K ANNULAR



# COG Operating LLC

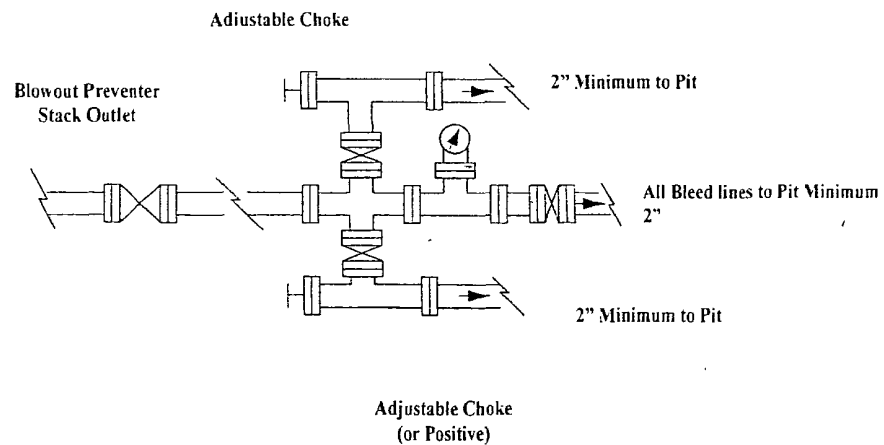
## Exhibit #9

### BOPE and Choke Schematic



Minimum 4" Nominal choke and kill lines

Choke Manifold Requirement (2000 psi WP)  
No Annular Required

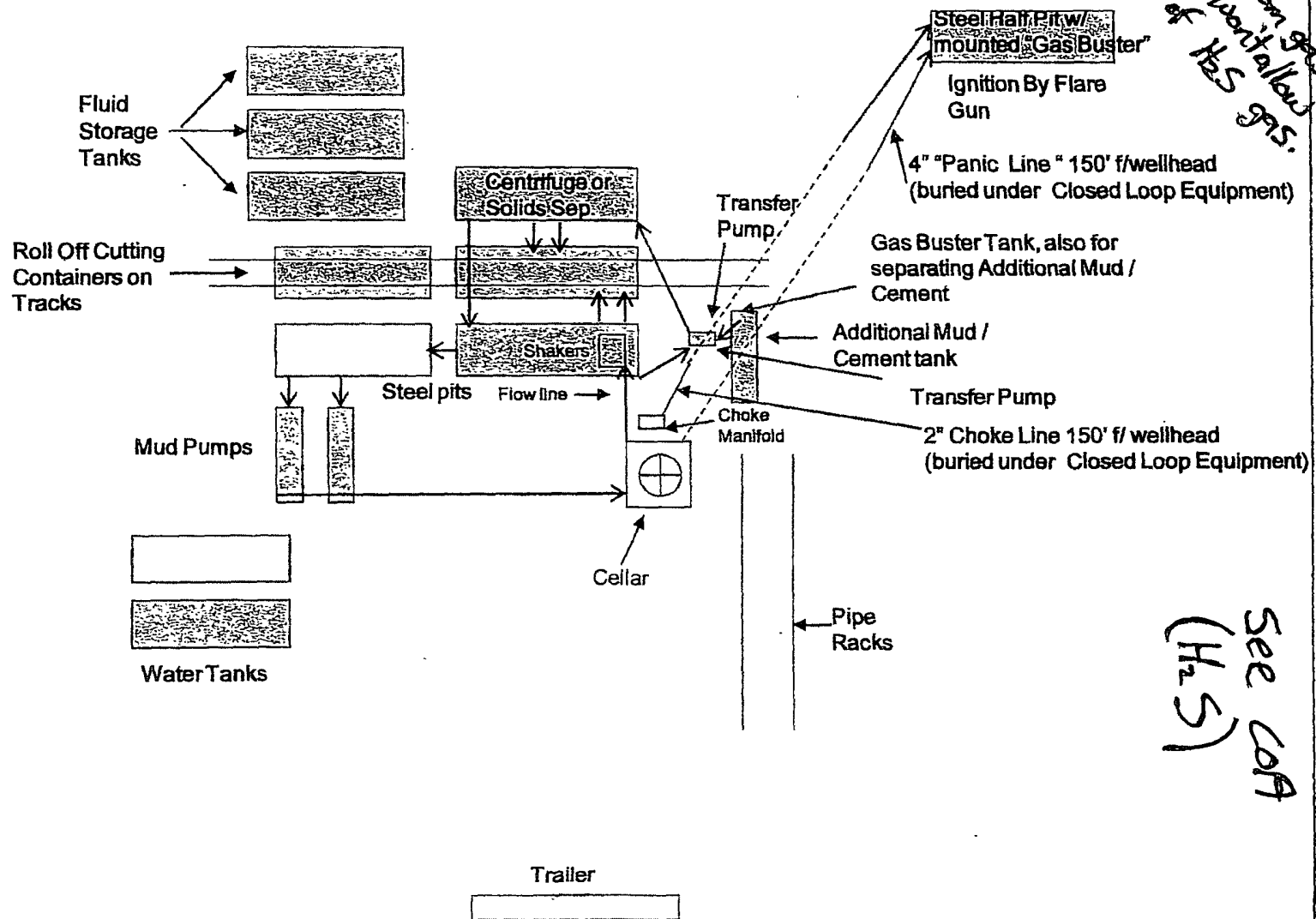


**NOTES REGARDING THE BLOWOUT PREVENTERS**

**Master Drilling Plan  
Eddy County, New Mexico**

1. Drilling nipple to be so constructed that it can be removed without use of a welder through rotary table opening, with minimum I.D. equal to preventer bore
2. Wear ring to be properly installed in head
3. Blow out preventer and all fittings must be in good condition, 2000 psi WP minimum
4. All fittings to be flanged.
5. Safety valve must be available on rig floor at all times with proper connections, valve to be full 2000 psi WP minimum
6. All choke and fill lines to be securely anchored especially ends of choke lines
7. Equipment through which bit must pass shall be at least as large as the diameter of the casing being drilled through.
8. Kelly cock on Kelly.
9. Extension wrenches and hands wheels to be properly installed
10. Blow out preventer control to be located as close to driller's position as feasible
11. Blow out preventer closing equipment to include minimum 40-gallon accumulator, two independent sources of pump power on each closing unit installation all API specifications.

COG Operating LLC  
Closed Loop Equipment Diagram



# COG Operating LLC

## Hydrogen Sulfide Drilling Operation Plan

### I. HYDROGEN SULFIDE TRAINING

All personnel, whether regularly assigned, contracted, or employed on an unscheduled basis, will receive training from a qualified instructor in the following areas prior to commencing drilling operations on this well:

1. The hazards and characteristics of hydrogen sulfide (H<sub>2</sub>S)
2. The proper use and maintenance of personal protective equipment and life support systems.
3. The proper use of H<sub>2</sub>S detectors, alarms, warning systems, briefing areas, evacuation procedures, and prevailing winds.
4. The proper techniques for first aid and rescue procedures.

In addition, supervisory personnel will be trained in the following areas:

1. The effects of H<sub>2</sub>S on metal components. If high tensile tubular are to be used, personnel will be trained in their special maintenance requirements.
2. Corrective action and shut-in procedures when drilling or reworking a well and blowout prevention and well control procedures.
3. The contents and requirements of the H<sub>2</sub>S Drilling Operations Plan and Public Protection Plan.

There will be an initial training session just prior to encountering a known or probable H<sub>2</sub>S zone (within 3 days or 500 feet) and weekly H<sub>2</sub>S and well control drills for all personnel in each crew. The initial training session shall include a review of the site specific H<sub>2</sub>S Drilling Operations Plan and the Public Protection Plan. **The concentrations of H<sub>2</sub>S of wells in this area from surface to TD are low enough that a contingency plan is not required.**

**6. Metallurgy:**

- A. All drill strings, casings, tubing, wellhead, blowout preventer, drilling spool, kill lines, choke manifold and lines, and valves shall be suitable for H2S service.
- B. All elastomers used for packing and seals shall be H2S trim.

**7. Communication:**

- A. Radio communications in company vehicles including cellular telephone and 2-way radio.
- B. Land line (telephone) communication at Office.

**8. Well testing:**

- A. Drill stem testing will be performed with a minimum number of personnel in the immediate vicinity, which are necessary to safely and adequately conduct the test. The drill stem testing will be conducted during daylight hours and formation fluids will not be flowed to the surface. All drill-stem-testing operations conducted in an H2S environment will use the closed chamber method of testing.
- B. There will be no drill stem testing.

**EXHIBIT #7**

**WARNING  
YOU ARE ENTERING AN H2S  
AUTHORIZED PERSONNEL ONLY**

- 1. BEARDS OR CONTACT LENSES NOT ALLOWED**
- 2. HARD HATS REQUIRED**
- 3. SMOKING IN DESIGNATED AREAS ONLY**
- 4. BE WIND CONSCIOUS AT ALL TIMES**
- 5. CHECK WITH COG OPERATING FOREMAN AT**

**COG OPERATING LLC  
1-432-683-7443  
1-575-746-2010**

**EDDY COUNTY EMERGENCY NUMBERS**

ARTESIA FIRE DEPT. 575-746-5050  
ARTESIA POLICE DEPT. 575-746-5000  
EDDY CO. SHERIFF DEPT. 575-746-9888

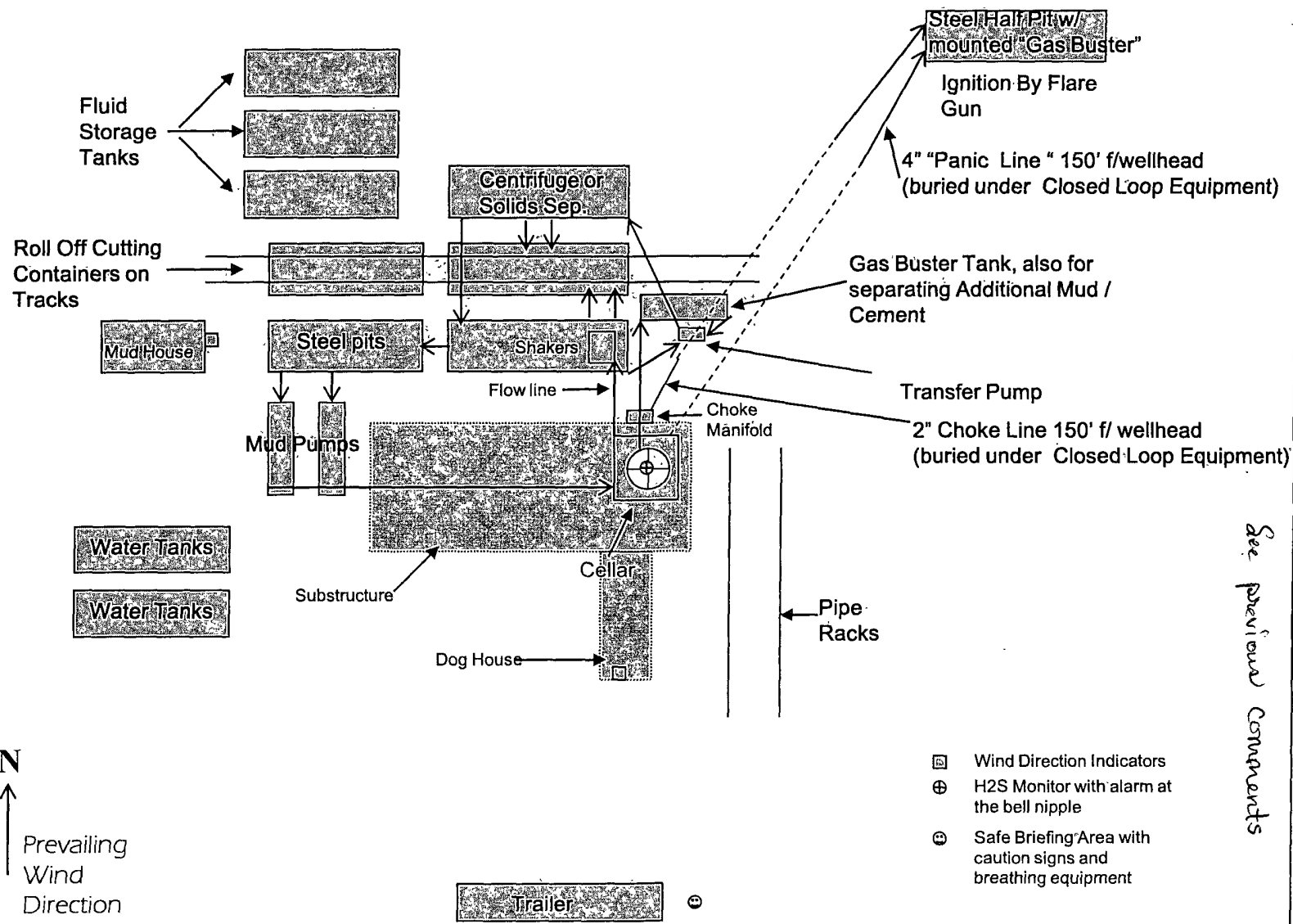
**LEA COUNTY EMERGENCY NUMBERS**

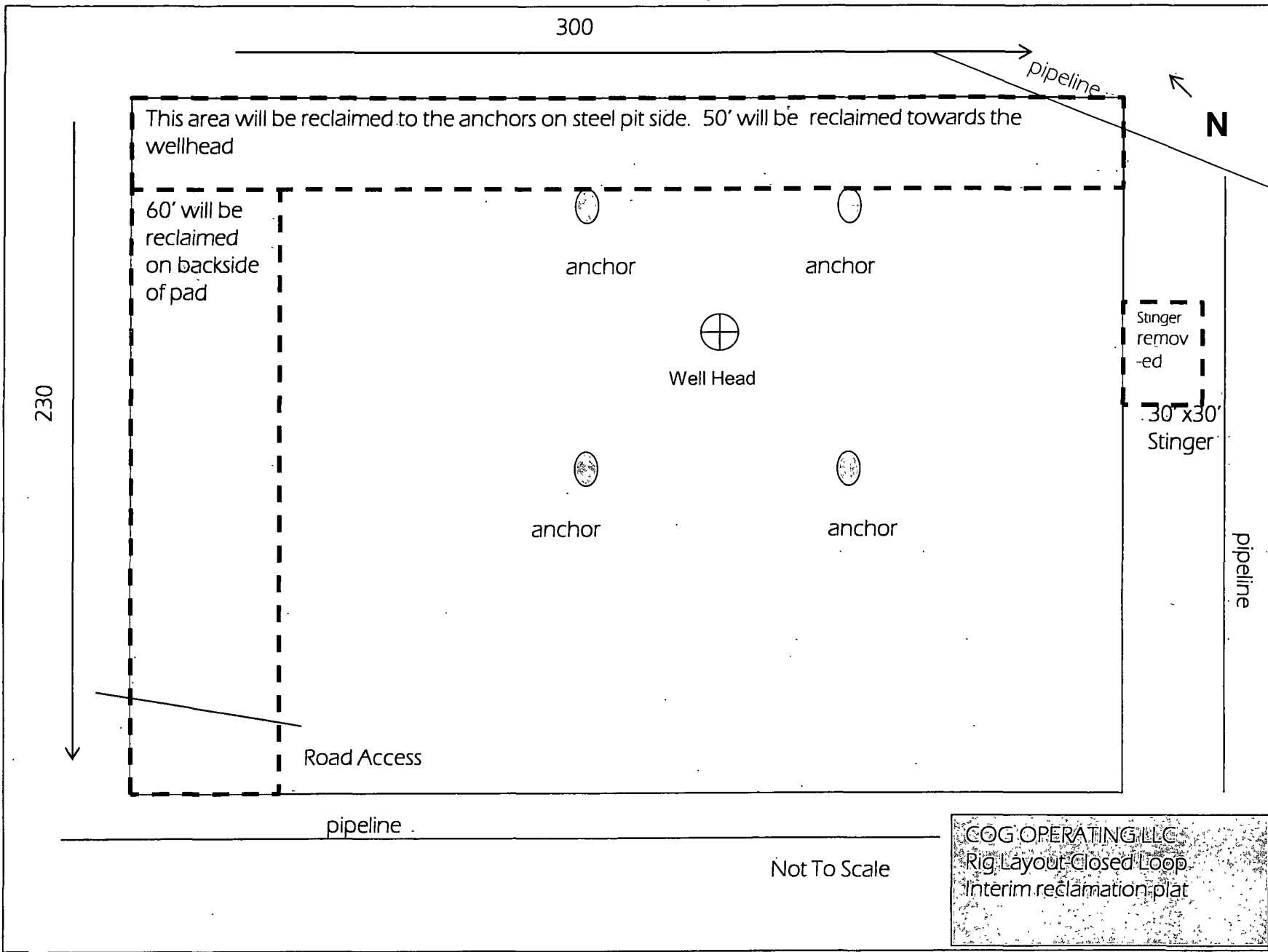
HOBBS FIRE DEPT. 575-397-9308  
HOBBS POLICE DEPT. 575-397-9285  
LEA CO. SHERIFF DEPT. 575-396-1196

COG Operating LLC

# EXHIBIT 8

Drilling Location - H2S Safety Equipment Diagram







# PECOS DISTRICT CONDITIONS OF APPROVAL

OPERATOR'S NAME:	COG OPERATING, LLC
LEASE NO.:	LC028731A
WELL NAME & NO.:	632-DODD FEDERAL UNIT
SURFACE HOLE FOOTAGE:	1156'/S. & 980'/E.
BOTTOM HOLE FOOTAGE	
LOCATION:	Section 15, T. 17 S., R. 29 E., NMPM
COUNTY:	Eddy County, New Mexico

## TABLE OF CONTENTS

Standard Conditions of Approval (COA) apply to this APD. If any deviations to these standards exist or special COAs are required, the section with the deviation or requirement will be checked below.

- ☐ **General Provisions**
- ☐ **Permit Expiration**
- ☐ **Archaeology, Paleontology, and Historical Sites**
- ☐ **Noxious Weeds**
- ☒ **Special Requirements**
  - Avoidance of testing device
- ☐ **Construction**
  - Notification
  - Topsoil
  - Closed Loop System
  - Federal Mineral Material Pits
  - Well Pads
  - Roads
- ☐ **Road Section Diagram**
- ☒ **Drilling**
  - H2S requirement
  - Logging requirement
  - Waste Material and Fluids
- ☐ **Production (Post Drilling)**
  - Well Structures & Facilities
  - Pipelines
  - Electric Lines
- ☐ **Interim Reclamation**
- ☐ **Final Abandonment & Reclamation**