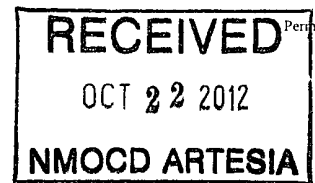


District I
1625 N French Dr., Hobbs, NM 88240
Phone (505) 393-6161 Fax (505) 393-0720
District II
811 S First St., Artesia, NM 88210
Phone (505) 748-1283 Fax (505) 748-9720
District III
1000 Rio Brazos Road, Aztec, NM 87410
Phone (505) 334-6178 Fax (505) 334-6170
District IV
1220 S St. Francis Dr., Santa Fe, NM 87505
Phone (505) 476-3460 Fax (505) 476-3462

State of New Mexico
Energy Minerals and Natural Resources
Oil Conservation Division
1220 South St. Francis Dr.
Santa Fe, NM 87505

Form C-101
Revised December 16, 2011



APPLICATION FOR PERMIT TO DRILL, RE-ENTER, DEEPEN, PLUGBACK, OR ADD A ZONE

¹ Operator Name and Address Ray Westall Operating, Inc. P. O. Box 4, Loco Hills, NM 88255		² OGRID Number 119305
		³ API Number 30-015-33628
⁴ Property Code 311815	⁵ Property Name Beretta 26 state Com	⁶ Well No 1

⁷ Surface Location

UL - Lot	Section	Township	Range	Lot Idn	Feet from	N/S Line	Feet From	E/W Line	County
B	26	18 S	28 E		660	North	1650	East	Eddy

⁸ Pool Information

SWD; Wolfcamp-Penn	96138
--------------------	-------

Additional Well Information

⁹ Work Type A (Cisco & Canyon)	¹⁰ Well Type S	¹¹ Cable/Rotary R	¹² Lease Type S	¹³ Ground Level Elevation 3,476'
¹⁴ Multiple Yes	¹⁵ Proposed Depth 9,800'	¹⁶ Formation SWD; Wolfcamp, Cisco, & Canyon	¹⁷ Contractor	¹⁸ Spud Date upon approval
Depth to Ground water >50'		Distance from nearest fresh water well >11,000'		Distance to nearest surface water >1/4 mi.

¹⁹ Proposed Casing and Cement Program

Type	Hole Size	Casing Size	Casing Weight/ft	Setting Depth	Sacks of Cement	Estimated TOC
Surf.	17-1/2"	13-3/8"	48	300'	400 sx	GL
Int.	12-1/4"	9-5/8"	40	3,014'	1,250 sx	GL
Prod.	8-3/4"	5-1/2"	17	11,020'	1,820 sx	1,900'

Casing/Cement Program: Additional Comments

Will squeeze Bone Spring, set CIBP @ 9800' top w/ 25' cmt, & perf 8450-9750'
--

Proposed Blowout Prevention Program

Type	Working Pressure	Test Pressure	Manufacturer
	3,000	2,000	

I hereby certify that the information given above is true and complete to the best of my knowledge and belief I further certify that the drilling pit will be constructed according to NMOC D guidelines <input type="checkbox"/> , a general permit <input type="checkbox"/> , or an (attached) alternative OCD-approved plan <input type="checkbox"/> . Signature		OIL CONSERVATION DIVISION Approved By	
Printed name Brian Wood		Title Geologist	
Title Consultant		Approved Date 10/29/2012	Expiration Date 10/24/2014
E-mail Address brian@permitswest.com			
Date Oct. 19, 2012	Phone (505) 466-8120	Conditions of Approval Attached	

District I-
1625 N French Dr., Hobbs, NM 88240
Phone (575) 393-6161 Fax (575) 393-0720
District II
811 S First St., Artesia, NM 88210
Phone (575) 748-1283 Fax (575) 748-9720
District III
1000 Rio Brazos Road, Aztec, NM 87410
Phone (505) 334-6178 Fax (505) 334-6170
District IV
1220 S St Francis Dr., Santa Fe, NM 87505
Phone (505) 476-3460 Fax (505) 476-3462

State of New Mexico
Energy, Minerals & Natural Resources Department
OIL CONSERVATION DIVISION
1220 South St. Francis Dr.
Santa Fe, NM 87505

Form C-102
Revised August 1, 2011
Submit one copy to appropriate
District Office

☐ AMENDED REPORT

WELL LOCATION AND ACREAGE DEDICATION PLAT

¹ API Number 30-015-33628	² Pool Code 96138 96135	³ Pool Name SWD; Wolfcamp-Penn
⁴ Property Code 311815	⁵ Property Name Beretta 26 State Com	⁶ Well Number 1
⁷ OGRID No. 119305	⁸ Operator Name Ray Westall Operating, Inc.	⁹ Elevation 3476

¹⁰ Surface Location

UL or lot no. B	Section 26	Township 18 S	Range 28 E	Lot Idn	Feet from the 660	North/South line North	Feet from the 1650	East/West line East	County Eddy
--------------------	---------------	------------------	---------------	---------	----------------------	---------------------------	-----------------------	------------------------	----------------

¹¹ Bottom Hole Location If Different From Surface

UL or lot no.	Section	Township	Range	Lot Idn	Feet from the	North/South line	Feet from the	East/West line	County
---------------	---------	----------	-------	---------	---------------	------------------	---------------	----------------	--------

¹² Dedicated Acres	¹³ Joint or Infill	¹⁴ Consolidation Code	¹⁵ Order No.
-------------------------------	-------------------------------	----------------------------------	-------------------------

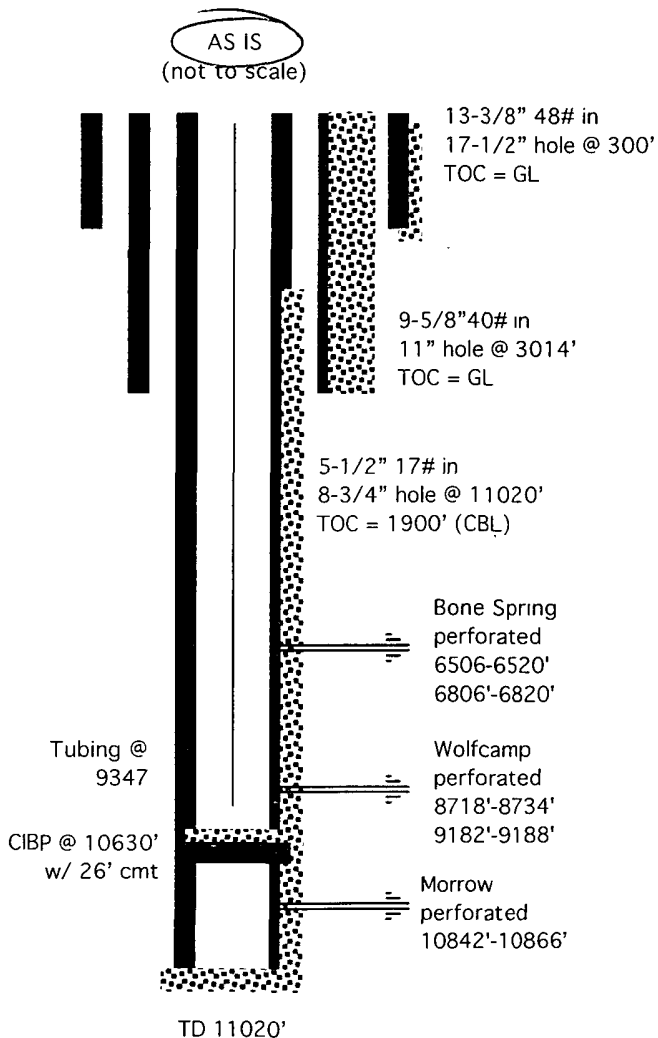
No allowable will be assigned to this completion until all interests have been consolidated or a non-standard unit has been approved by the division.

¹⁶ 	¹⁷ OPERATOR CERTIFICATION <i>I hereby certify that the information contained herein is true and complete to the best of my knowledge and belief, and that this organization either owns a working interest or unleased mineral interest in the land including the proposed bottom hole location or has a right to drill this well at this location pursuant to a contract with an owner of such a mineral or working interest, or to a voluntary pooling agreement or a compulsory pooling order heretofore entered by the division</i> Signature Date 10-19-12 Printed Name brian@permitswest.com E-mail Address	
	¹⁸ SURVEYOR CERTIFICATION <i>I hereby certify that the well location shown on this plat was plotted from field notes of actual surveys made by me or under my supervision, and that the same is true and correct to the best of my belief</i> Aug. 13, 1993 Date of Survey Signature and Seal of Professional Surveyor Original survey by Herschel Jones on file with NMOCD Certificate Number 3640	

INJECTION WELL DATA SHEET

OPERATOR: RAY WESTALL OPERATING, INC.WELL NAME & NUMBER: BERETTA 26 STATE COM 1

WELL LOCATION: 660 FNL & 1650 FEL B 26 18 S 28 E
 FOOTAGE LOCATION UNIT LETTER SECTION TOWNSHIP RANGE

WELLBORE SCHEMATICWELL CONSTRUCTION DATASurface Casing

Hole Size: 17-1/2" Casing Size: 13-3/8"
 Cemented with: 400 sx. or 664 ft³
 Top of Cement: SURFACE Method Determined: VISUAL

Intermediate Casing

Hole Size: 11" Casing Size: 9-5/8"
 Cemented with: 1,250 sx. or 2,022 ft³
 Top of Cement: SURFACE Method Determined: VISUAL

Production Casing

Hole Size: 8-3/4" Casing Size: 5-1/2"
 Cemented with: 1,820 sx. or 2,910 ft³
 Top of Cement: 1,900' Method Determined: CBL
 Total Depth: 11,020'

Injection Interval

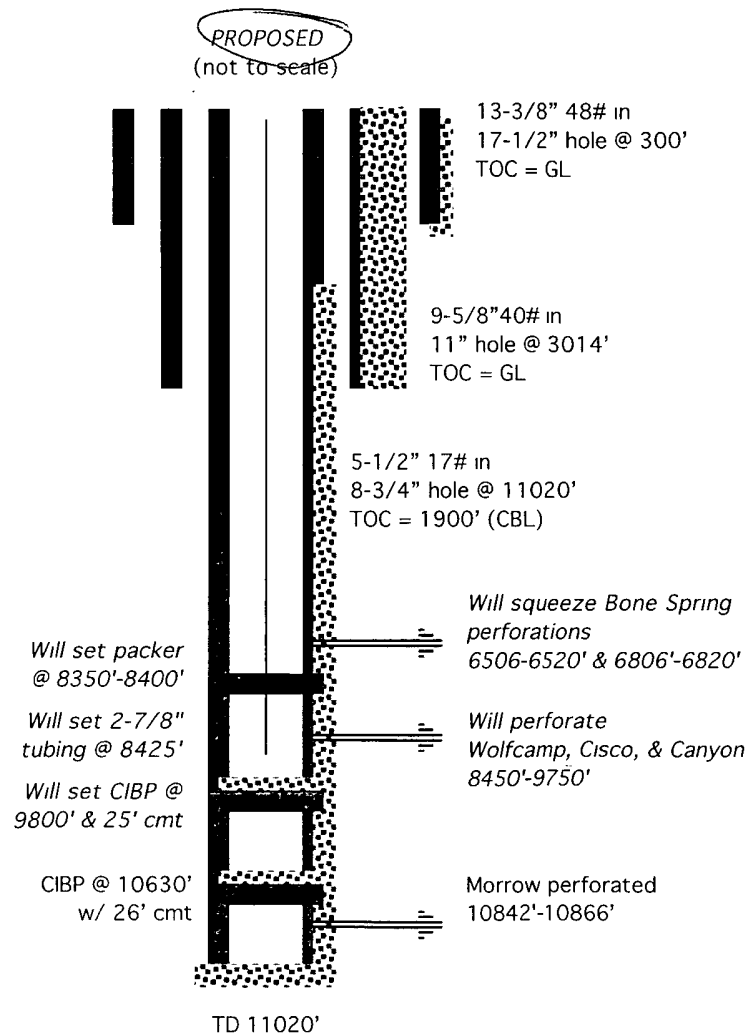
8,450' feet to 9,750'

(Perforated ~~or Open Hole~~; indicate which)

INJECTION WELL DATA SHEET

OPERATOR: RAY WESTALL OPERATING, INC.WELL NAME & NUMBER: BERETTA 26 STATE COM 1

WELL LOCATION: 660 FNL & 1650 FEL B 26 18 S 28 E
 FOOTAGE LOCATION UNIT LETTER SECTION TOWNSHIP RANGE

WELLBORE SCHEMATICWELL CONSTRUCTION DATASurface Casing

Hole Size: 17-1/2" Casing Size: 13-3/8"
 Cemented with: 400 sx. *or* 664 ft³
 Top of Cement: SURFACE Method Determined: VISUAL

Intermediate Casing

Hole Size: 11" Casing Size: 9-5/8"
 Cemented with: 1,250 sx. *or* 2,022 ft³
 Top of Cement: SURFACE Method Determined: VISUAL

Production Casing

Hole Size: 8-3/4" Casing Size: 5-1/2"
 Cemented with: 1,820 sx. *or* 2,910 ft³
 Top of Cement: 1,900' Method Determined: CBL
 Total Depth: 11,020'

Injection Interval

8,450' feet to 9,750'

(Perforated or Open Hole; indicate which)