

UNITED STATES
DEPARTMENT OF THE INTERIOR
BUREAU OF LAND MANAGEMENT

NMOC

WELL COMPLETION OR RECOMPLETION REPORT AND LOG

FORM APPROVED
OMB NO. 1004-0137
Expires: November 30, 2000

1a. Type of Well ☐ Oil Well ☒ Gas Well ☐ Dry ☐ Other
b. Type of Completion ☒ New Well ☐ Work Over ☐ Deepen ☐ Plug Back ☐ Diff. Resvr.,
Other _____

2. Name of Operator
MYCO INDUSTRIES, INC.

3. Address
P.O. BOX 840, ARTESIA, NM 88211-0840

3.a Phone No. (Include area code)
(505)748-4280

4. Location of Well (Report location clearly and in accordance with Federal requirements)*

At Surface 1877' FNL & 1312' FEL, SEC. 35-T21S-R27E

At top prod. interval reported below SAME

At total depth SAME

RECEIVED

JUL 01 2005

ODU-ARTESIA

14. Date Spudded
12/16/2004

15. Date T.D. Reached
01/17/2005

16. Date Completed
☐ D & A ☒ Ready to Prod.
05/21/2005

5. Lease Serial No.
NM-14768-A

6. If Indian, Allottee or Tribe Name

7. Unit or CA Agreement Name and no.

8. Lease Name and Well No.

BOISE FEDERAL #1

9. API Well No.

30-015-33735

10. Field and Pool, or Exploratory

CARLSBAD WOLFCAMP; EAST

11. Sec., T., R., M., on Block and
Survey or Area 35-T21S-R27E

12. County or Parish
EDDY

13. State
NM

17. Elevations (DF, RKB, RT, GL)*
3102' GL

18. Total Depth: MD 12,003'
TVD

19. Plug Back T.D.: MD 10,265'
TVD

20. Depth Bridge Plug Set: MD 10,300'
TVD

21. Type of Electric & Other Mechanical Logs Run (Submit copy of each)
SCHLUMBERGER PLATFORM EXPRESS, CBL (ATTACHED)

22. Was well cored? ☒ No ☐ Yes (Submit analysis)
Was DST run? ☒ No ☐ Yes (Submit analysis)
Directional Survey? ☐ No ☒ Yes (Submit copy)

23. Casing and Liner Record (Report all strings set in well)

Hole Size	Size/Grade	Wt. (#/ft.)	Top (MD)	Bottom (MD)	Stage Cementer Depth	No. of Sk. & Type of Cement	Slurry Vol. (BBL)	Cement Top*	Amount Pulled
17-1/2"	13-3/8"	48#	0'	505'	-----	300 LITE + 200"C"		CIRCULATED	
12-1/4"	9-5/8" J55	36#	0'	2574'	-----	180 THIXO + 700 LITE + 2850 SXS	300"C"	CIRCULATED	
8-3/4"	5-1/2" L80	17#	0'	12,039'				CIRCULATED	

24. Tubing Record

Size	Depth Set (MD)	Packer Depth (MD)	Size	Depth Set (MD)	Packer Depth (MD)	Size	Depth Set (MD)	Packer Depth (MD)
2-7/8"	9630'	9630'						

25. Producing Intervals

26. Perforation Record

Formation	Top	Bottom	Perforated Interval	Size	No. Holes	Perf. Status
A) WOLFCAMP	9700'	9825'	SEE ATTACHED			
B)						
C)						
D)						

27. Acid, Fracture, Treatment, Cement Squeeze, Etc.

Depth Interval
SEE ATTACHED

Amount and Type of Material

ACCEPTED FOR RECORD

JUN 29 2005

LES BABYAK
PETROLEUM ENGINEER

28. Production - Interval A

Date First Produced	Test Date	Hours Tested	Test Production	Oil BBL	Gas MCF	Water BBL	Oil Gravity Corr. API	Gas Gravity	Production Method
05/21/05	05/21/05	24 hrs	→	54	1161	11	63	.7119	FLOWING
Choke Size	Tbg. Press. Flwg.	Csg. Press.	24 Hr. Rate	Oil BBL	Gas MCF	Water BBL	Gas : Oil Ratio	Well Status	
14/64"	SI 1250	0	→	54	1161	11	21500:1	PRODUCING	

Production - Interval B

Date First Produced	Test Date	Hours Tested	Test Production	Oil BBL	Gas MCF	Water BBL	Oil Gravity Corr. API	Gas Gravity	Production Method
			→						
Choke Size	Tbg. Press. Flwg.	Csg. Press.	24 Hr. Rate	Oil BBL	Gas MCF	Water BBL	Gas : Oil Ratio	Well Status	
	SI		→						

Production - Interval C

Date First Produced	Test Date	Hours Tested	Test Production →	Oil BBL	Gas MCF	Water BBL	Oil Gravity Corr. API	Gas Gravity	Production Method
Choke Size	Tbg. Press. Flwg. SI	Csg. Press.	24 Hr. Rate →	Oil BBL	Gas MCF	Water BBL	Gas : Oil Ratio	Well Status	

28c. Production - Interval D

Date First Produced	Test Date	Hours Tested	Test Production →	Oil BBL	Gas MCF	Water BBL	Oil Gravity Corr. API	Gas Gravity	Production Method
Choke Size	Tbg. Press. Flwg. SI	Csg. Press.	24 Hr. Rate →	Oil BBL	Gas MCF	Water BBL	Gas : Oil Ratio	Well Status	

29. Disposition of Gas (Sold, used for fuel, vented, etc.)

FIRST SALES 5/21/05 (DUKE)

30. Summary of Porous Zones (Include Aquifers):

Show all important zones or porosity and contents thereof: Cored intervals and all drill-stem tests, including depth interval tested, cushion used, time tool open, flowing and shut-in pressures and recoveries.

31. Formation (Log) Markers

Formation	Top	Bottom	Descriptions, Contents, etc.	Name	Top Meas. Depth
Delaware	2168'				
Bone Spring	5407'				
Wolfcamp	8962'				
L. Wolfcamp	9696'				
Strawn	10338'				
Atoka	10849'				
Morrow-OCD	11214'				
Morrow Clast	11501'				
L. Morrow	11734'				
Barnett	11926'				

32. Additional remarks (include plugging procedure):

FORM C-144 (NMOCD) APPROVED 12/7/04 (PITS)

33. Circle enclosed attachments:

1. Electrical/Mechanical Logs (1 full set req'd.)
2. Geological Report
3. DST Report
4. Directional Survey
5. Sundry Notice for plugging and cement verification
6. Core Analysis
7. Other

34. I hereby certify that the foregoing and attached information is complete and correct as determined from all available records (see attached instructions)*

Name (please print) A.N. MUNCY

Title EXPLOR/OPER MGR.

Signature

A.N. Muncy, PECS

Date 06/22/2005

Title 18 U.S.C. Section 101 and Title 43 U.S.C. Section 1212, make it a crime for any person knowingly and willfully to make to any department or agency of the United States and false, fictitious or fraudulent statements or representations as to any matter within its jurisdiction.

MYCO INDUSTRIES, INC.
BOISE FEDERAL #1
T21S-R27E-Sec. 35: 1877' FNL & 1312' FEL
Eddy County, New Mexico

26. Perforation Record

Perforate Morrow formation from 11,913-24'. Total 10 holes, 0.41" diameter.

Perforate Morrow formation from 11,604-53'. Total 19 holes, 0.46" diameter.

Perforate Morrow formation from 11,354-60'. Total 15 holes, 0.45" diameter.

Perforate Strawn formation from 10,350-90'. Total 29 holes, 0.42" diameter.

Perforate Wolfcamp formation from 9,700-825'. Total 20 holes, 0.43" diameter.

27. Acid, Fracture Treatment, Cement Squeeze, Etc.

11,604-53' Acidize with 3000 gal 7.5% Morrow Acid; Frac with 500 bbls + 35000#

11,354-60' Acidize with 2000 gal 15% HCL

9,700-825' Frac with 1667 bbls + 12000#

LOCATIONBOISE 35 FEDERAL #1**LEASE & WELL**SECTION 35, T21S, R27EEDDY COUNTY, NM(Give Unit, Section, Township and Range)**OPERATOR**MYCO INDUSTRIES INC, 423 W MAIN STREET, PO BOX 840, ARTESIA, NM
88211**DRILLING CONTRACTOR**NABORS DRILLING USA, LP

The Undersigned hereby certifies that he is an authorized representative of the drilling contractor who drilled the above-described well and that he has conducted deviation tests and obtained the following results:

<u>DEGREES @ DEPTH</u>		<u>DEGREES @ DEPTH</u>		<u>DEGREES @ DEPTH</u>		<u>DEGREES @ DEPTH</u>	
450	1 1/4	5603	1	11378	2		
535	1	6114	1/2	11595	2		
659	1/2	6602	1	11603	2 3/4		
904	1/2	7093	1/2	12000	2		
1313	1	7646	1/2				
1513	1/2	8279	2 1/2				
1713	1	8526	1 3/4				
1931	1	8804	1 1/2				
2131	1/2	9274	1				
2339	1/2	9777	1 3/4				
3101	1	10172	1 1/2				
3607	1	10683	2				
4098	1	10892	1				
4658	1	11094	1 1/2				
5165	1	11346	2				

Drilling Contractor

Nabors Drilling USA, Inc.

By


Wilfredo Rosa, Operations Support Manager

Subscribed and sworn to before me this _____ day of _____, 2005

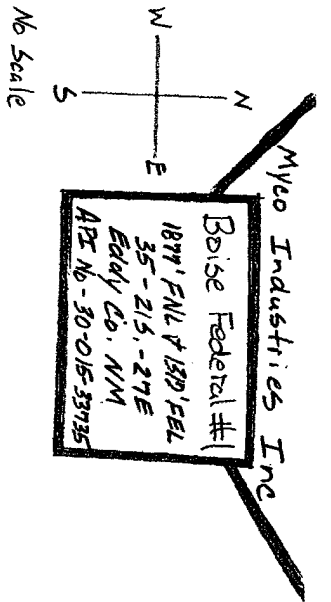
Notary Public

My Commision Expires _____

HARRIS

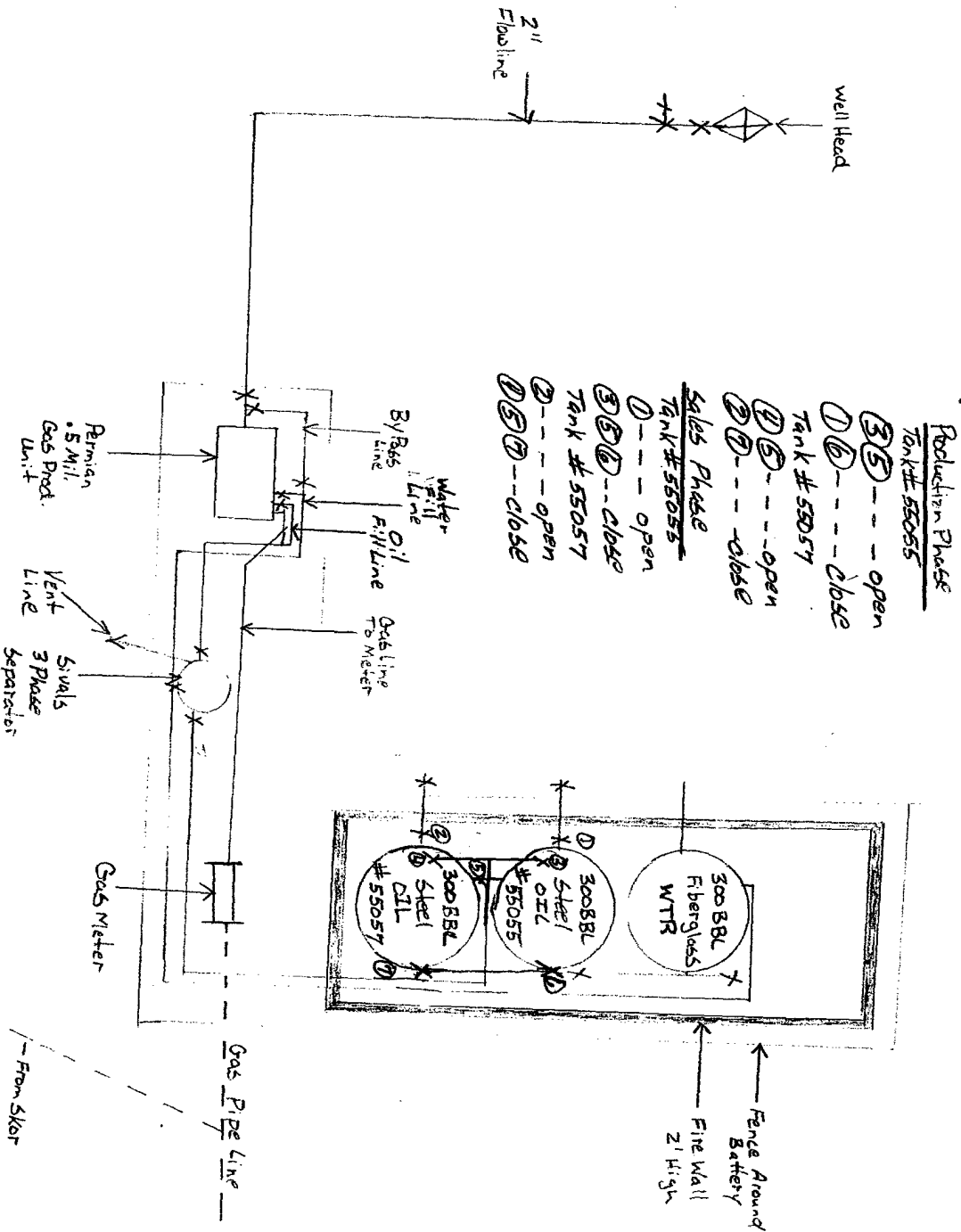
County

TEXAS



Gas Prod. Unit SN-3419-1
3 Phase Sep. SN-101458
Fiberglass SN-3040-05
steel SN-3830
steel SN-3888

Road



SITE DIAGRAM