

DISTRICT I
1625 N. French Dr., Hobbs, NM 88240
DISTRICT II
811 South First, Artesia, NM 88210
DISTRICT III
1000 Rio Brazos Rd., Aztec, NM 87410
DISTRICT IV
2040 South Pacheco, Santa Fe, NM 87505

State of New Mexico
Energy, Minerals and Natural Resources Department

Form C-102
Revised March 17, 1999

Submit to Appropriate District Office
State Lease - 4 Copies
Fee Lease - 3 Copies

OIL CONSERVATION DIVISION
2040 South Pacheco
Santa Fe, New Mexico 87504-2088

☐ AMENDED REPORT

WELL LOCATION AND ACREAGE DEDICATION PLAT

API Number	Pool Code	Pool Name NASH DRAW (DELAWARE) FIELD
Property Code 001796	Property Name POKER LAKE UNIT	Well Number 207
GRID No. 001801	Operator Name BASS ENTERPRISES PRODUCTION COMPANY	Elevation 3209'

Surface Location

UL or lot No. H	Section 18	Township 24 S	Range 30 E	Lot Idn	Feet from the 2500	North/South line NORTH	Feet from the 860	East/West line EAST	County EDDY
--------------------	---------------	------------------	---------------	---------	-----------------------	---------------------------	----------------------	------------------------	----------------

Bottom Hole Location If Different From Surface

UL or lot No.	Section	Township	Range	Lot Idn	Feet from the	North/South line	Feet from the	East/West line	County
Dedicated Acres 40	Joint or Infill I	Consolidation Code	Order No.						

NO ALLOWABLE WILL BE ASSIGNED TO THIS COMPLETION UNTIL ALL INTERESTS HAVE BEEN CONSOLIDATED
OR A NON-STANDARD UNIT HAS BEEN APPROVED BY THE DIVISION

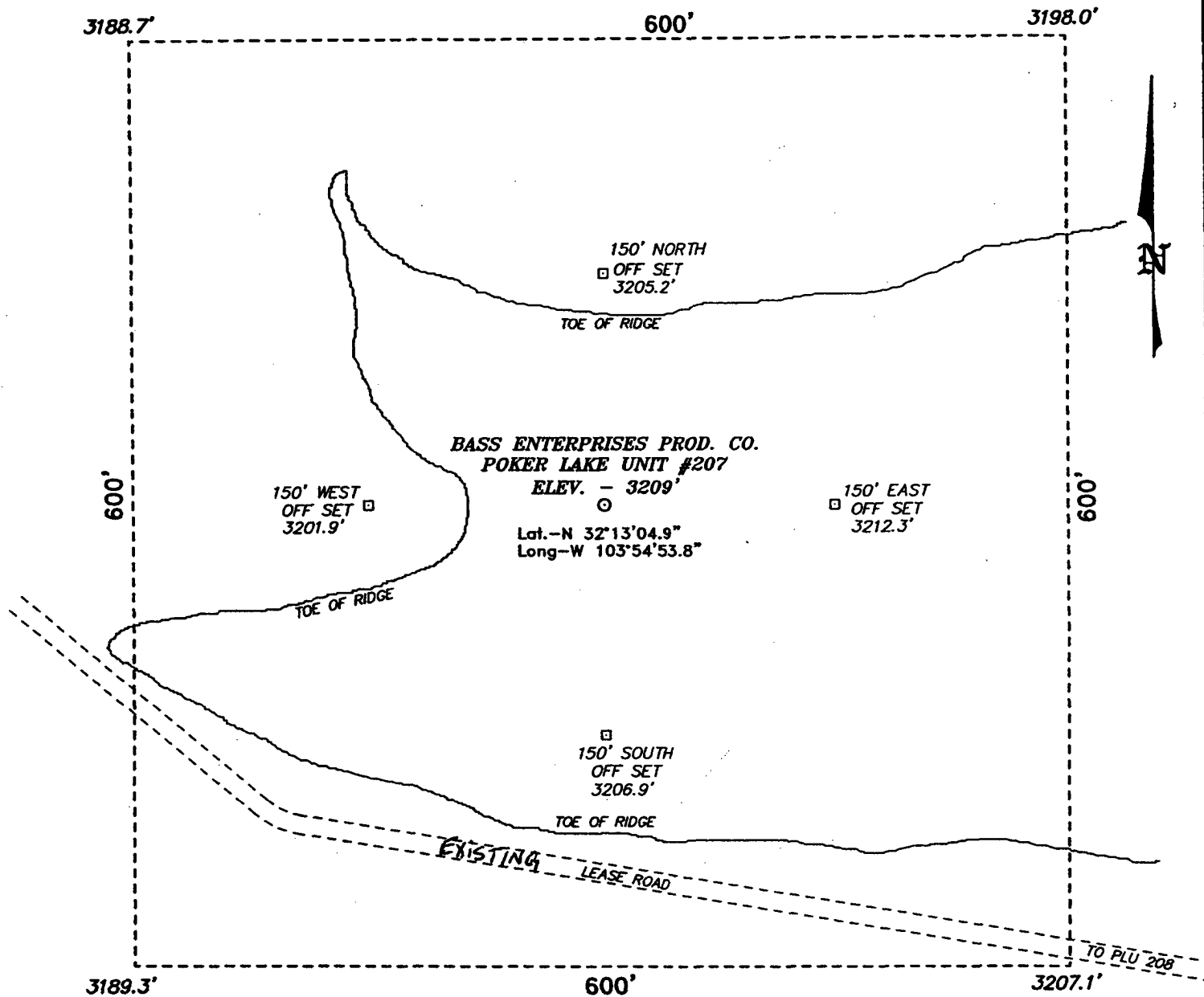
LOT 1 - 39.96 AC.	80 AC.	160 AC.	2500'
LOT 2 - 39.96 AC.		LAT - N32°13'04.9" LONG - W103°54'53.8"	3188.7' 3198.0'
LOT 3 - 40.02 AC.	80 AC.	3189.3' 3207.1'	860'
LOT 4 - 40.07 AC.			

RECEIVED
MAY 31 2005
OIL CONSERVATION DIVISION

OPERATOR CERTIFICATION
I hereby certify the the information contained herein is true and complete to the best of my knowledge and belief.
Signature
W.R. DANNELS
Printed Name
DIVISION DRILLING SUPT.
Title
7-22-04
Date

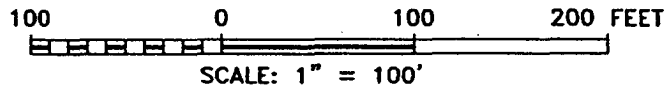
SURVEYOR CERTIFICATION
I hereby certify that the well location shown on this plat was plotted from field notes of actual surveys made by me or under my supervision, and that the same is true and correct to the best of my belief.
MAY 19, 2004
Date Surveyed
Signature & Seal of Professional Surveyor
NEW MEXICO
W.O. No. 4298
Certificate No. Gary L. Jones 7977
PROFESSIONAL LAND SURVEYOR

**SECTION 18, TOWNSHIP 24 SOUTH, RANGE 30 EAST, N.M.P.M.,
EDDY COUNTY, NEW MEXICO.**



DIRECTIONS TO LOCATION:

FROM THE JUNCTION OF CO. RD. 748 AND CO. RD. 746A, GO NORTHERLY ON 746A FOR APPROX. 2.0 MILES TO LEASE ROAD; THENCE WEST ON LEASE ROAD TO THE PLU #208 AND CONTINUE WEST TO THE PROPOSED WELL PAD.



BASIN SURVEYS P.O. BOX 1786—HOBBS, NEW MEXICO

W.O. Number: 4298 Drawn By: K. GOAD

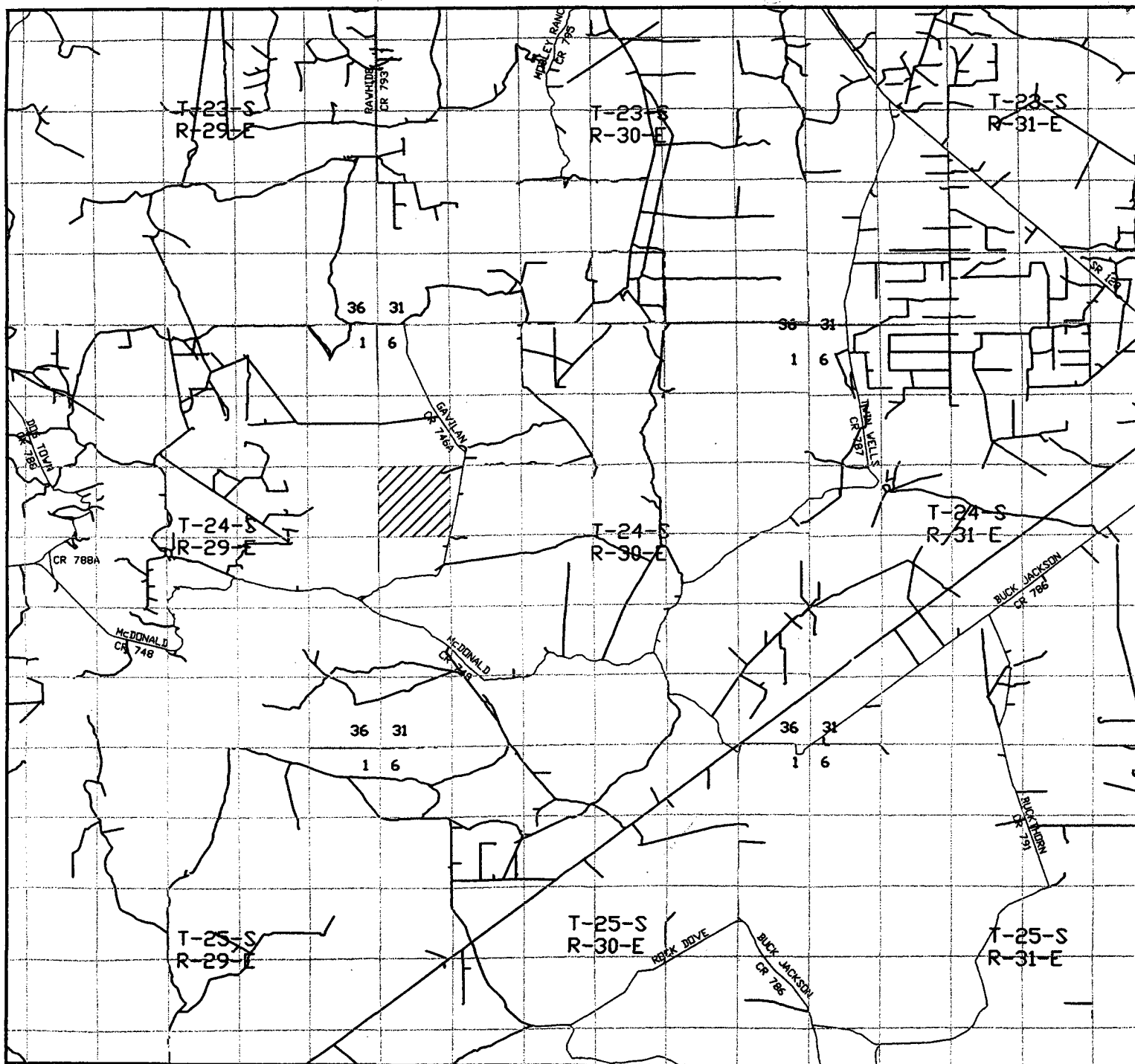
Date: 05-20-2004 Disk: KJG CD#7 - 4298A.DWG

BASS ENTERPRISES PRODUCTION CO.

REF: POKER LAKE UNIT No. 207 / Well Pad Topo

THE POKER LAKE UNIT No. 207 LOCATED 2500' FROM
THE NORTH LINE AND 860' FROM THE EAST LINE OF
SECTION 18, TOWNSHIP 24 SOUTH, RANGE 30 EAST,
N.M.P.M., EDDY COUNTY, NEW MEXICO.

Survey Date: 05-19-2004 Sheet 1 of 1 Sheets



POKER LAKE UNIT #207

Located at 2500' FNL and 860' FEL
 Section 18, Township 24 South, Range 30 East,
 N.M.P.M., Eddy County, New Mexico.

basin
surveys

focused on excellence
 in the oilfield

P.O. Box 1786
 1120 N. West County Rd.
 Hobbs, New Mexico 88241
 (505) 393-7316 - Office
 (505) 392-3074 - Fax
 basinsurveys.com

W.O. Number: 4298AA - KJG #7

Survey Date: 05-19-2004

Scale: 1" = 2 MILES

Date: 05-20-2004

**BASS ENTERPRISES
 PRODUCTION CO.**